

Production Worksheet

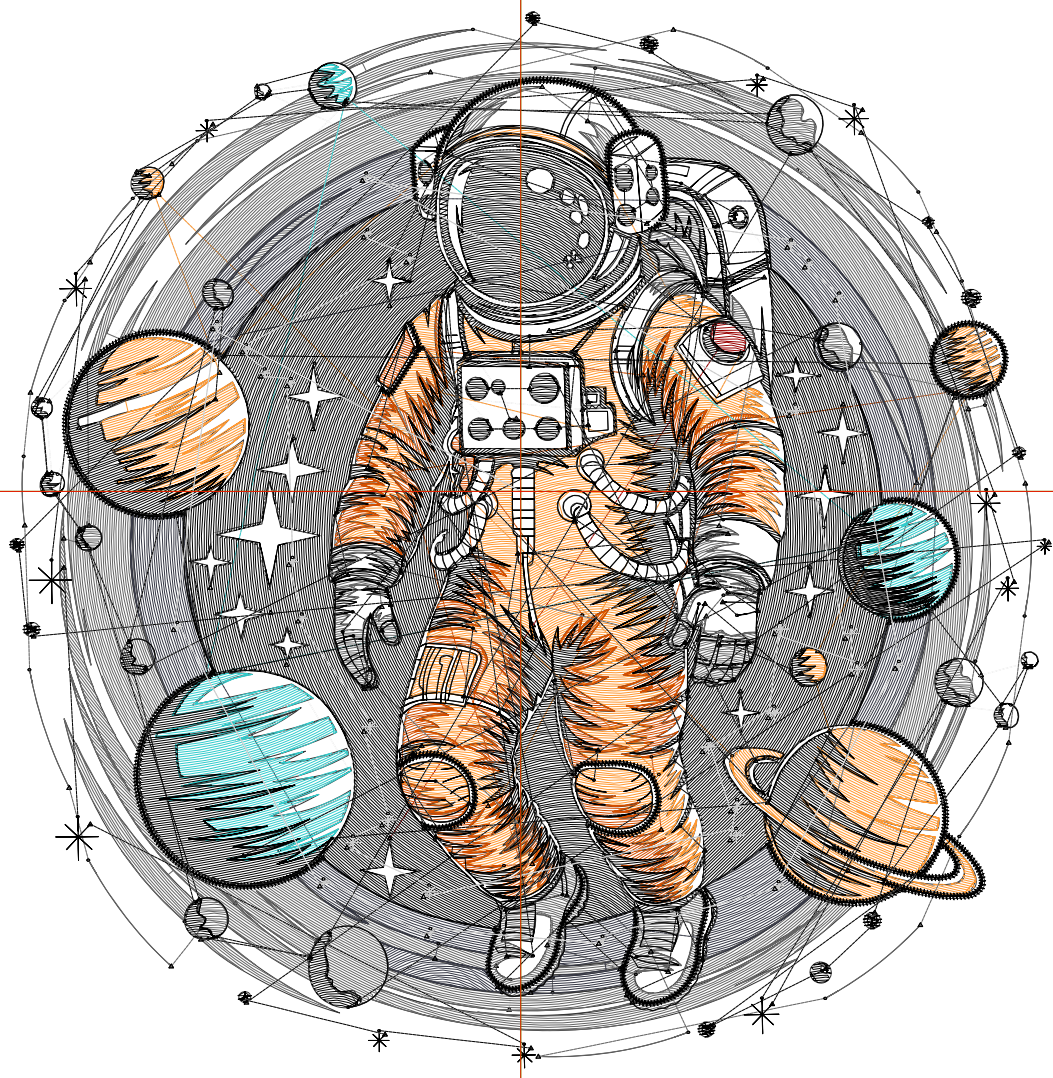
Wilcom EmbroideryStudio - Designing



Design: **5**

Title:

Stitches: 50,634
Height: 5.50 in
Width: 5.43 in
Colors: 9
Colorway: Colorway 1
Zoom: 1:1



Production Worksheet

Wilcom EmbroideryStudio - Designing



Design: **5**

Title:

Stitches: 50,634
 Height: 5.50 in
 Width: 5.43 in
 Colors: 9
 Colorway: Colorway 1
 Zoom: 1:1

Machine format: Tajima
 Color changes: 8
 Stops: 9
 Trims: 316
 Appliqués: 0
 Left: 67.7 mm
 Right: 70.2 mm
 Up: 63.4 mm
 Down: 76.3 mm
 EndX: 0.00 in
 EndY: 0.00 in
 Area 29.85 in²
 Max stitch: 7.8 mm
 Min stitch: 0.0 mm
 Max jump: 7.0 mm
 Total thread: 650.49ft
 Total bobbin: 186.84ft

Stop Sequence:

#	N#	Color	St.	Code	Name	Chart
1.	9		10,183	9	White	Default
2.	11		66	11	Dark Red	Default
3.	12		6,259	12	Orange	Default
4.	2		3,306		R212 G78 B0	
5.	18		6,175	18	Grey	Default
6.	4		1,783		R54 G56 B69	
7.	5		1,237	5	Aqua	Default
8.	8		21,091	8	Black	Default
9.	3		532		R204 G204 B204	

Production Worksheet

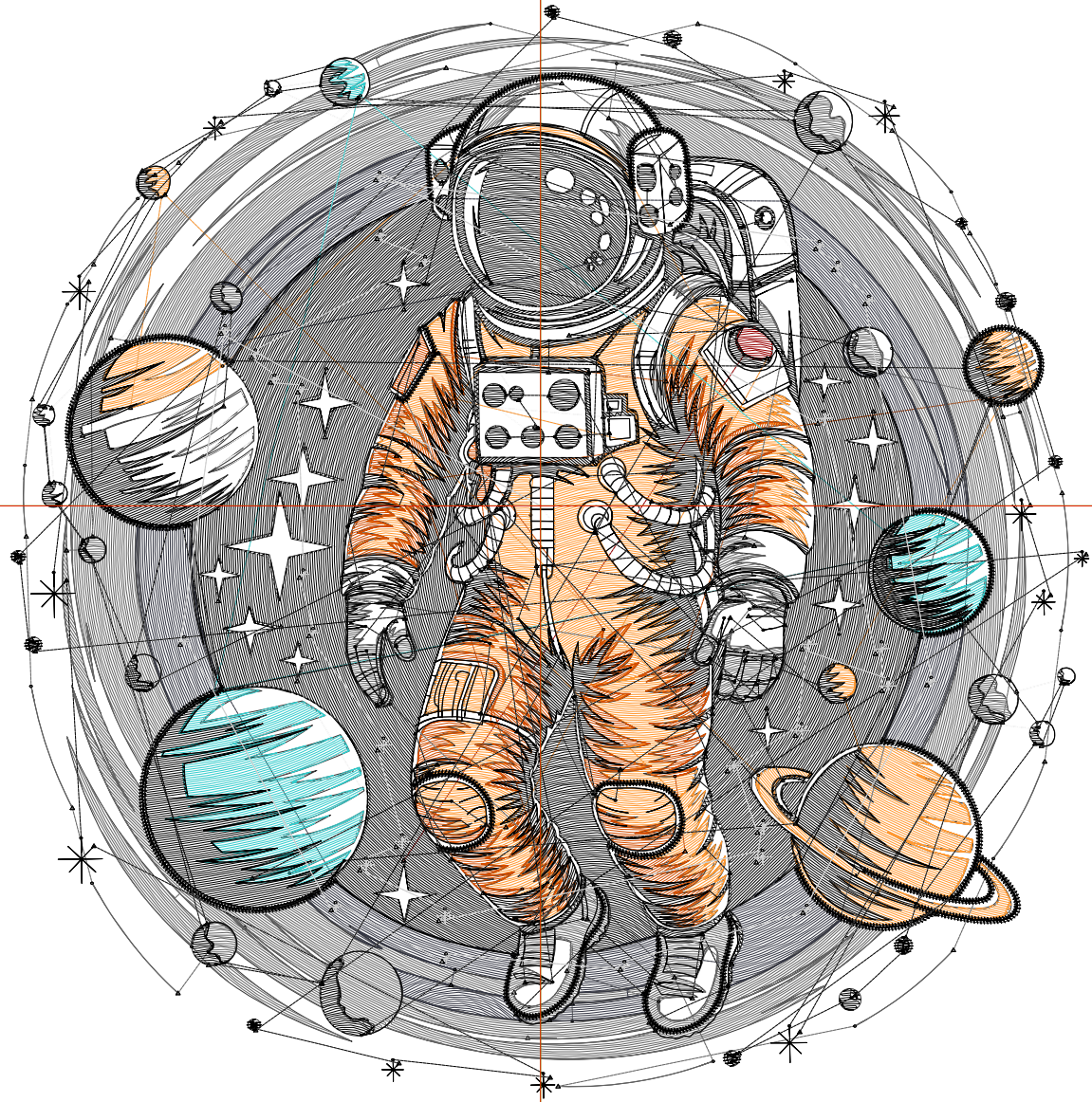
Wilcom EmbroideryStudio - Designing



Design: **6**

Title:

Stitches: 55,528
Height: 6.00 in
Width: 5.92 in
Colors: 9
Colorway: Colorway 1
Zoom: 1:1



Production Worksheet

Wilcom EmbroideryStudio - Designing



Design: **6**

Title:

Stitches: 55,528
 Height: 6.00 in
 Width: 5.92 in
 Colors: 9
 Colorway: Colorway 1
 Zoom: 1:1

Machine format: Tajima
 Color changes: 8
 Stops: 9
 Trims: 321
 Appliqués: 0
 Left: 73.9 mm
 Right: 76.5 mm
 Up: 69.8 mm
 Down: 82.6 mm
 EndX: 0.00 in
 EndY: 0.00 in
 Area 35.52 in²
 Max stitch: 8.5 mm
 Min stitch: 0.0 mm
 Max jump: 7.0 mm
 Total thread: 725.79ft
 Total bobbin: 212.43ft

Stop Sequence:

#	N#	Color	St.	Code	Name	Chart
1.	9		11,286	9	White	Default
2.	11		68	11	Dark Red	Default
3.	12		6,603	12	Orange	Default
4.	2		3,698		R212 G78 B0	
5.	18		6,874	18	Grey	Default
6.	4		2,016		R54 G56 B69	
7.	5		1,390	5	Aqua	Default
8.	8		23,053	8	Black	Default
9.	3		538		R204 G204 B204	

Production Worksheet

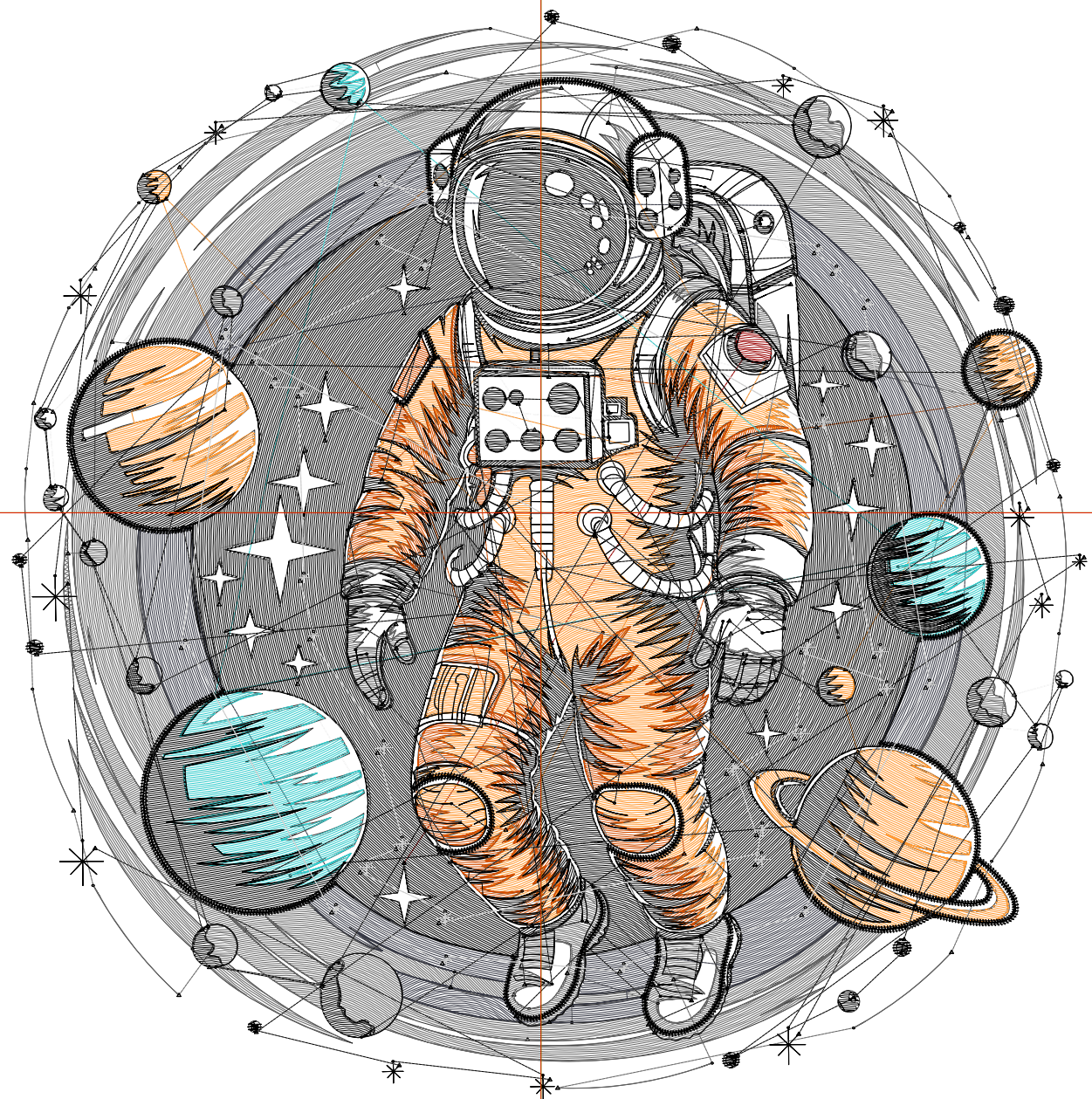
Wilcom EmbroideryStudio - Designing



Design: **6**

Title:

Stitches: 63,745
Height: 6.50 in
Width: 6.41 in
Colors: 9
Colorway: Colorway 1
Zoom: 1:1



Production Worksheet

Wilcom EmbroideryStudio - Designing



Design: **6**

Title:

Stitches: 63,745
 Height: 6.50 in
 Width: 6.41 in
 Colors: 9
 Colorway: Colorway 1
 Zoom: 1:1

Machine format: Tajima
 Color changes: 8
 Stops: 9
 Trims: 329
 Appliqués: 0
 Left: 80.2 mm
 Right: 82.7 mm
 Up: 76.1 mm
 Down: 89.0 mm
 EndX: 0.00 in
 EndY: 0.00 in
 Area 41.69 in²
 Max stitch: 9.2 mm
 Min stitch: 0.0 mm
 Max jump: 7.0 mm
 Total thread: 837.23ft
 Total bobbin: 246.52ft

Stop Sequence:

#	N#	Color	St.	Code	Name	Chart
1.	9		12,510	9	White	Default
2.	11		82	11	Dark Red	Default
3.	12		7,811	12	Orange	Default
4.	2		4,048		R212 G78 B0	
5.	18		9,216	18	Grey	Default
6.	4		2,257		R54 G56 B69	
7.	5		1,547	5	Aqua	Default
8.	8		25,718	8	Black	Default
9.	3		554		R204 G204 B204	

Production Worksheet

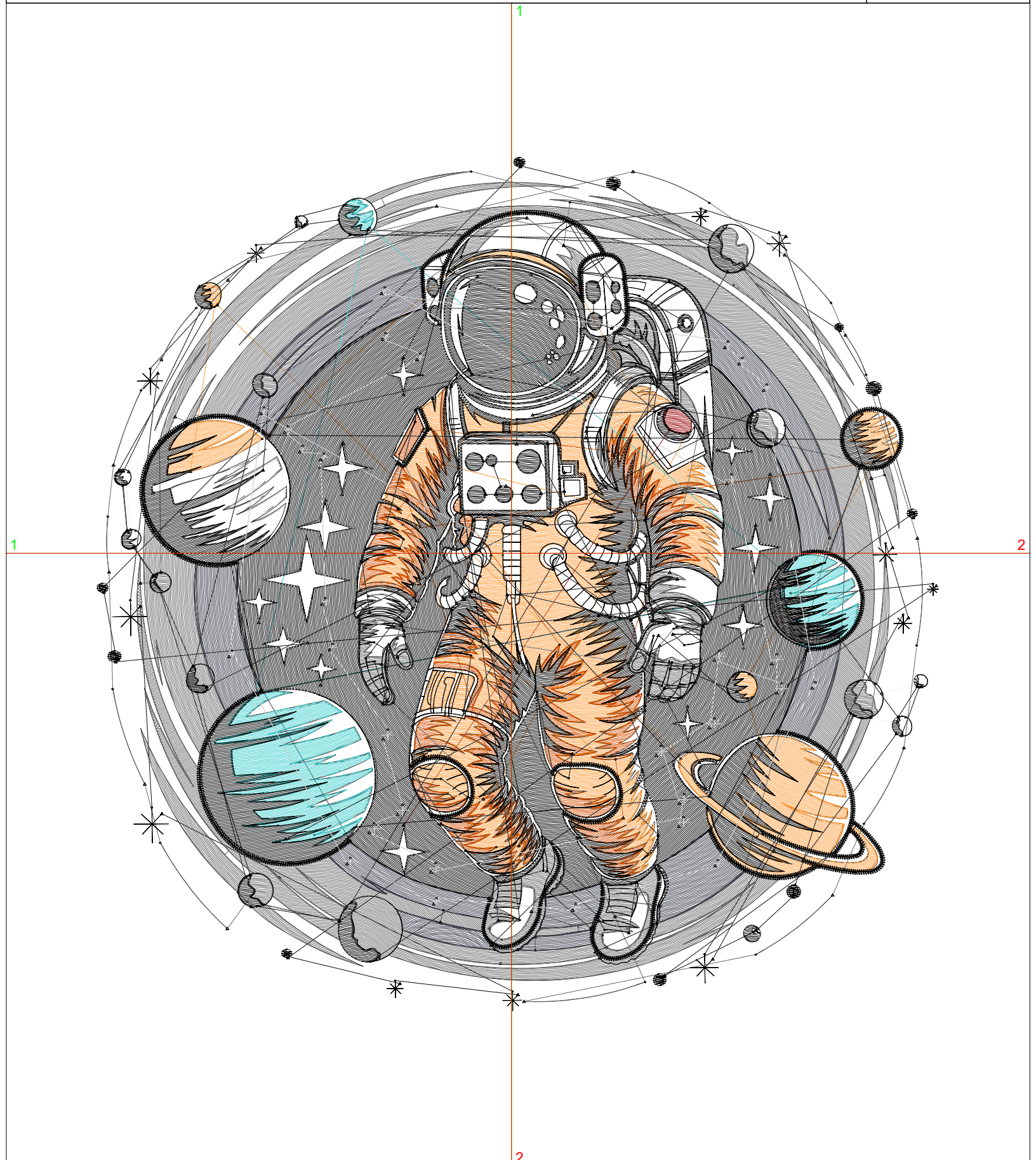
Wilcom EmbroideryStudio - Designing



Design: **7**

Title:

Stitches: 69,306
Height: 7.00 in
Width: 6.91 in
Colors: 9
Colorway: Colorway 1
Zoom: 1:1



Production Worksheet

Wilcom EmbroideryStudio - Designing



Design: **7**

Title:

Stitches: 69,306
 Height: 7.00 in
 Width: 6.91 in
 Colors: 9
 Colorway: Colorway 1
 Zoom: 1:1

Machine format: Tajima
 Color changes: 8
 Stops: 9
 Trims: 345
 Appliqués: 0
 Left: 86.4 mm
 Right: 89.0 mm
 Up: 82.4 mm
 Down: 95.3 mm
 EndX: 0.00 in
 EndY: 0.00 in
 Area 48.34 in²
 Max stitch: 9.9 mm
 Min stitch: 0.0 mm
 Max jump: 7.0 mm
 Total thread: 919.14ft
 Total bobbin: 273.43ft

Stop Sequence:

#	N#	Color	St.	Code	Name	Chart
1.	9		14,065	9	White	Default
2.	11		88	11	Dark Red	Default
3.	12		8,110	12	Orange	Default
4.	2		4,278		R212 G78 B0	
5.	18		10,089	18	Grey	Default
6.	4		2,488		R54 G56 B69	
7.	5		1,678	5	Aqua	Default
8.	8		27,932	8	Black	Default
9.	3		576		R204 G204 B204	

Production Worksheet

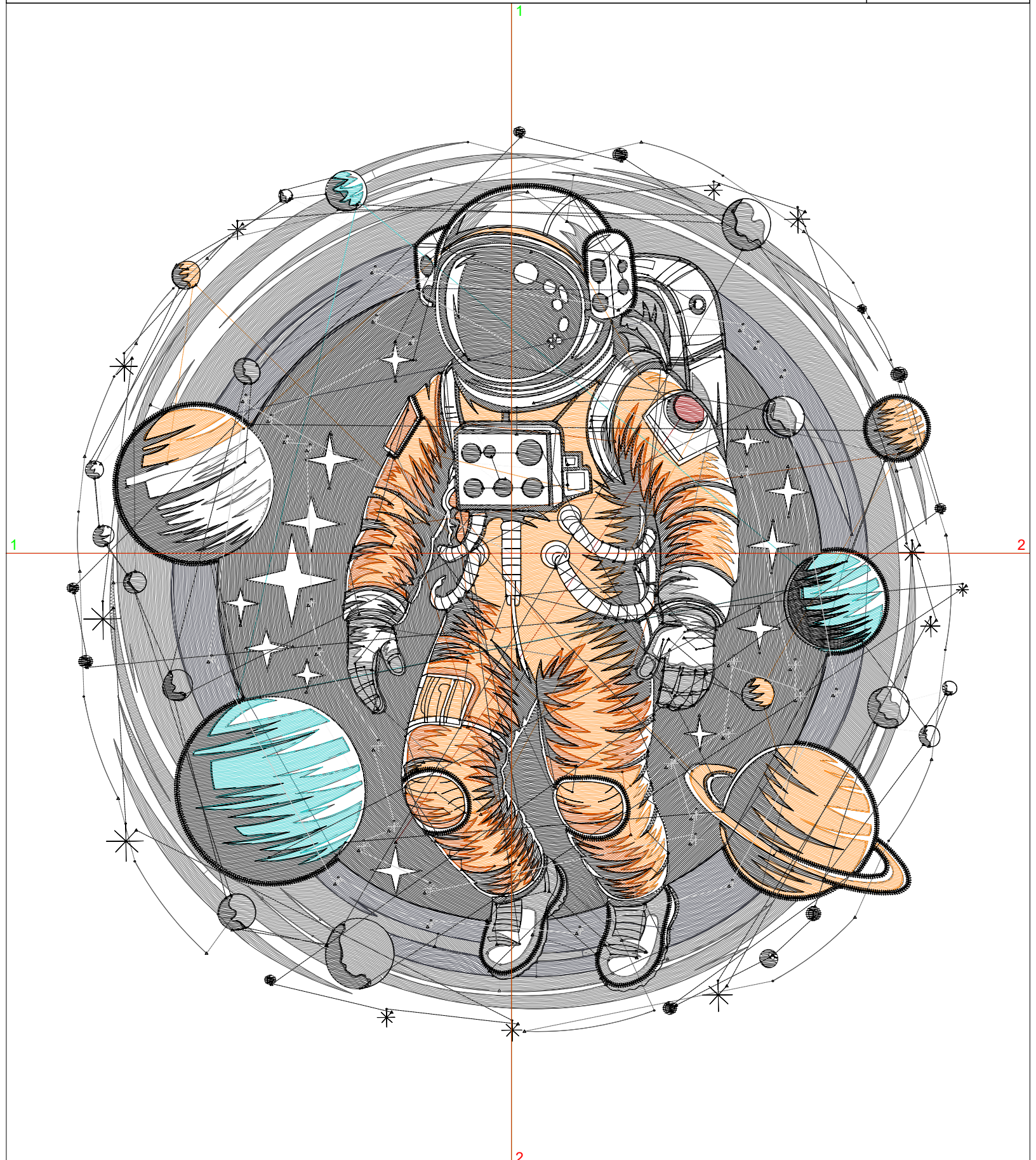
Wilcom EmbroideryStudio - Designing



Design: **7**

Title:

Stitches: 75,972
Height: 7.50 in
Width: 7.40 in
Colors: 9
Colorway: Colorway 1
Zoom: 1:1



Production Worksheet

Wilcom EmbroideryStudio - Designing



Design: **7**

Title:

Stitches: 75,972
 Height: 7.50 in
 Width: 7.40 in
 Colors: 9
 Colorway: Colorway 1
 Zoom: 1:1

Machine format: Tajima
 Color changes: 8
 Stops: 9
 Trims: 358
 Appliqués: 0
 Left: 92.7 mm
 Right: 95.2 mm
 Up: 88.8 mm
 Down: 101.7 mm
 EndX: 0.00 in
 EndY: 0.00 in
 Area 55.49 in²
 Max stitch: 10.6 mm
 Min stitch: 0.0 mm
 Max jump: 7.0 mm
 Total thread: 1022.80ft
 Total bobbin: 308.94ft

Stop Sequence:

#	N#	Color	St.	Code	Name	Chart
1.	9		15,133	9	White	Default
2.	11		101	11	Dark Red	Default
3.	12		9,001	12	Orange	Default
4.	2		4,769		R212 G78 B0	
5.	18		11,122	18	Grey	Default
6.	4		2,865		R54 G56 B69	
7.	5		1,893	5	Aqua	Default
8.	8		30,504	8	Black	Default
9.	3		582		R204 G204 B204	

Production Worksheet

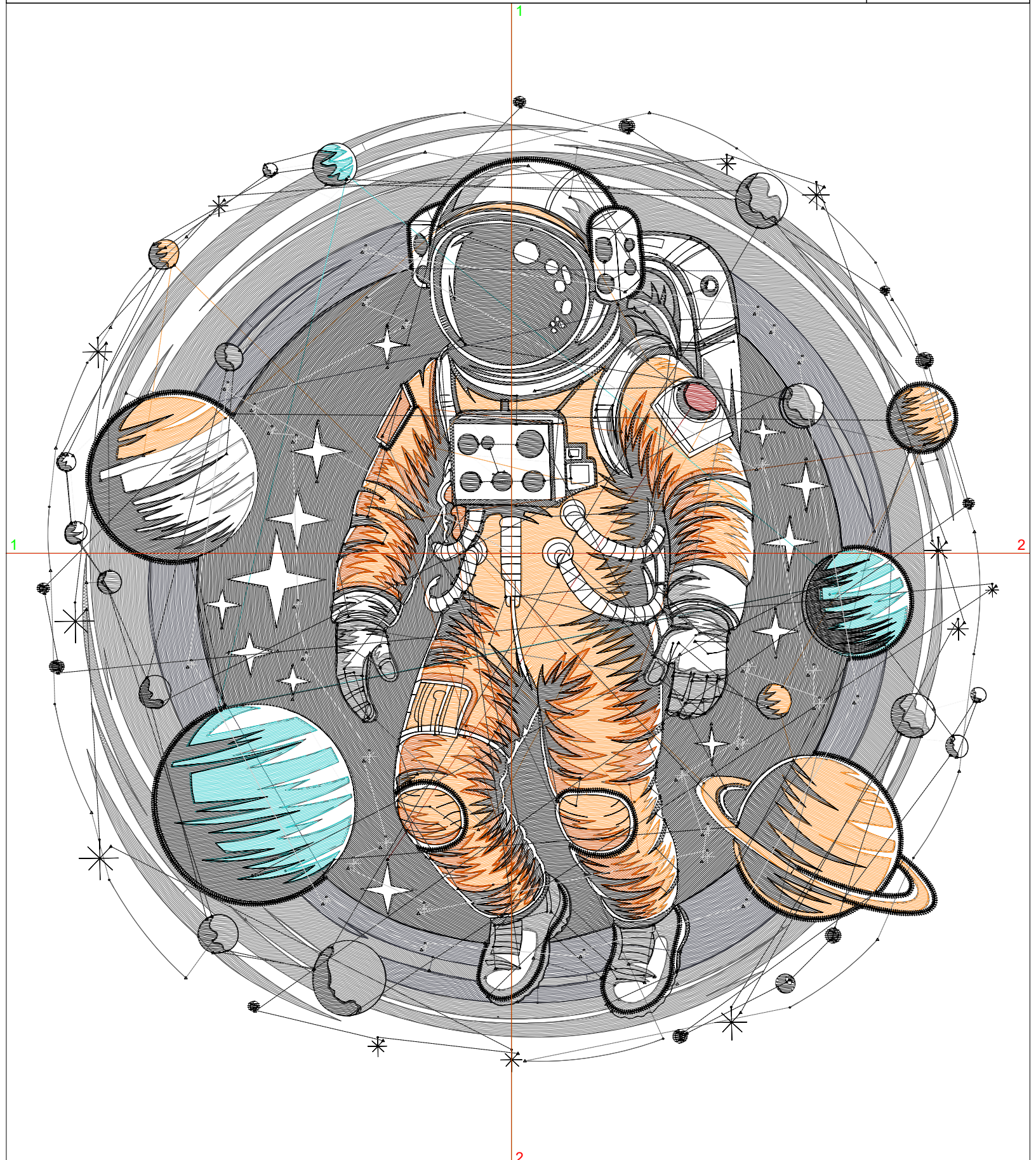
Wilcom EmbroideryStudio - Designing



Design: 8

Title:

Stitches: 83,576
Height: 8.00 in
Width: 7.89 in
Colors: 9
Colorway: Colorway 1
Zoom: 1:1



Production Worksheet

Wilcom EmbroideryStudio - Designing



Design: **8**

Title:

Stitches: 83,576
 Height: 8.00 in
 Width: 7.89 in
 Colors: 9
 Colorway: Colorway 1
 Zoom: 1:1

Machine format: Tajima
 Color changes: 8
 Stops: 9
 Trims: 364
 Appliqués: 0
 Left: 99.0 mm
 Right: 101.5 mm
 Up: 95.2 mm
 Down: 108.0 mm
 EndX: 0.00 in
 EndY: 0.00 in
 Area 63.14 in²
 Max stitch: 11.3 mm
 Min stitch: 0.0 mm
 Max jump: 7.0 mm
 Total thread: 1137.69ft
 Total bobbin: 347.46ft

Stop Sequence:

#	N#	Color	St.	Code	Name	Chart
1.	9		16,869	9	White	Default
2.	11		98	11	Dark Red	Default
3.	12		9,880	12	Orange	Default
4.	2		5,265		R212 G78 B0	
5.	18		12,366	18	Grey	Default
6.	4		3,131		R54 G56 B69	
7.	5		2,104	5	Aqua	Default
8.	8		33,264	8	Black	Default
9.	3		597		R204 G204 B204	

Production Worksheet

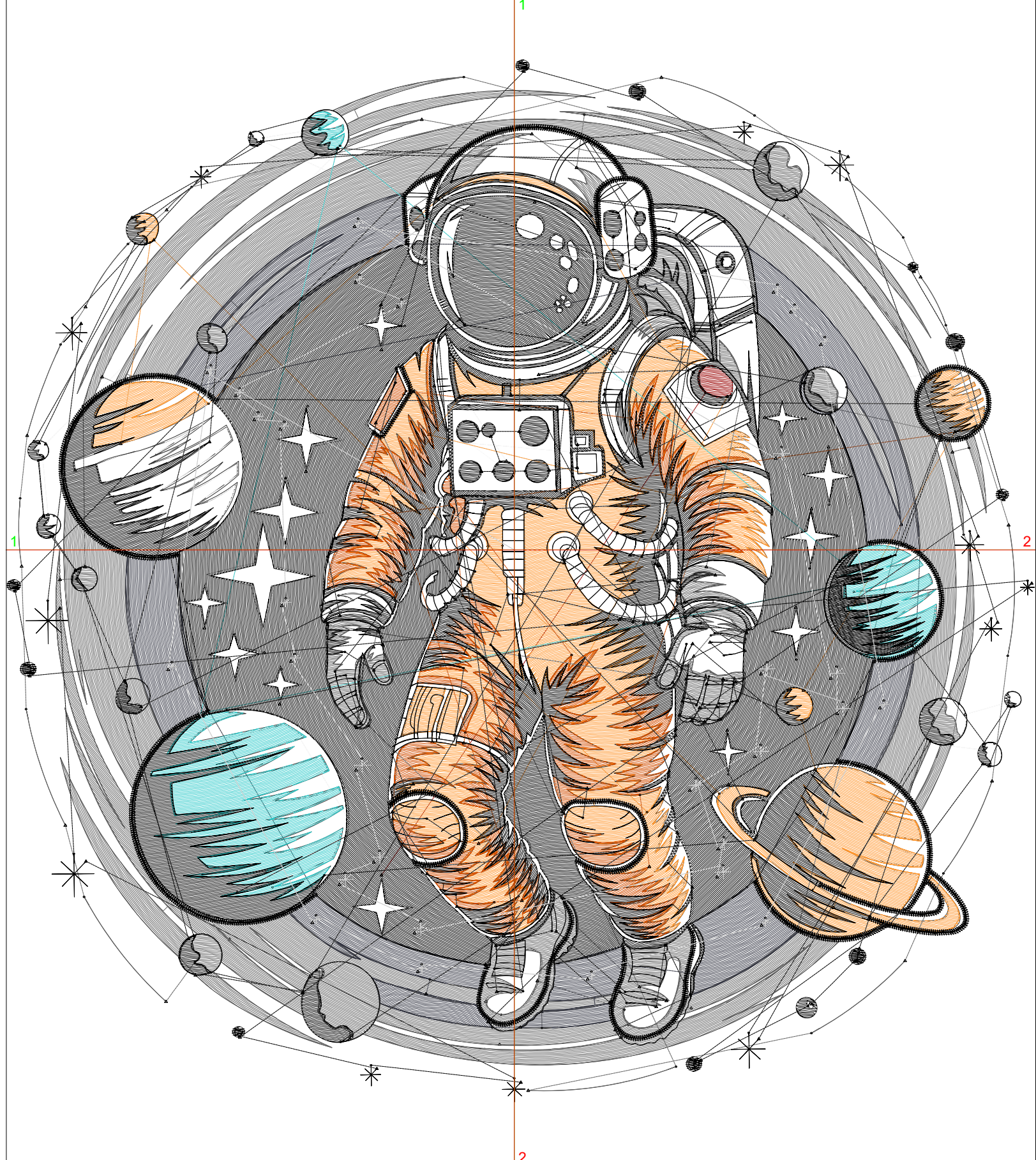
Wilcom EmbroideryStudio - Designing



Design: 8

Title:

Stitches: 88,634
Height: 8.50 in
Width: 8.39 in
Colors: 9
Colorway: Colorway 1
Zoom: 1:1



Production Worksheet

Wilcom EmbroideryStudio - Designing



Design: **8**

Title:

Stitches: 88,634
 Height: 8.50 in
 Width: 8.39 in
 Colors: 9
 Colorway: Colorway 1
 Zoom: 1:1

Machine format: Tajima
 Color changes: 8
 Stops: 9
 Trims: 367
 Appliqués: 0
 Left: 105.2 mm
 Right: 107.8 mm
 Up: 101.5 mm
 Down: 114.4 mm
 EndX: 0.00 in
 EndY: 0.00 in
 Area 71.27 in²
 Max stitch: 12.0 mm
 Min stitch: 0.0 mm
 Max jump: 7.0 mm
 Total thread: 1237.65ft
 Total bobbin: 387.03ft

Stop Sequence:

#	N#	Color	St.	Code	Name	Chart
1.	9		18,290	9	White	Default
2.	11		114	11	Dark Red	Default
3.	12		10,751	12	Orange	Default
4.	2		5,551		R212 G78 B0	
5.	18		11,415	18	Grey	Default
6.	4		3,474		R54 G56 B69	
7.	5		2,226	5	Aqua	Default
8.	8		36,205	8	Black	Default
9.	3		606		R204 G204 B204	

Production Worksheet

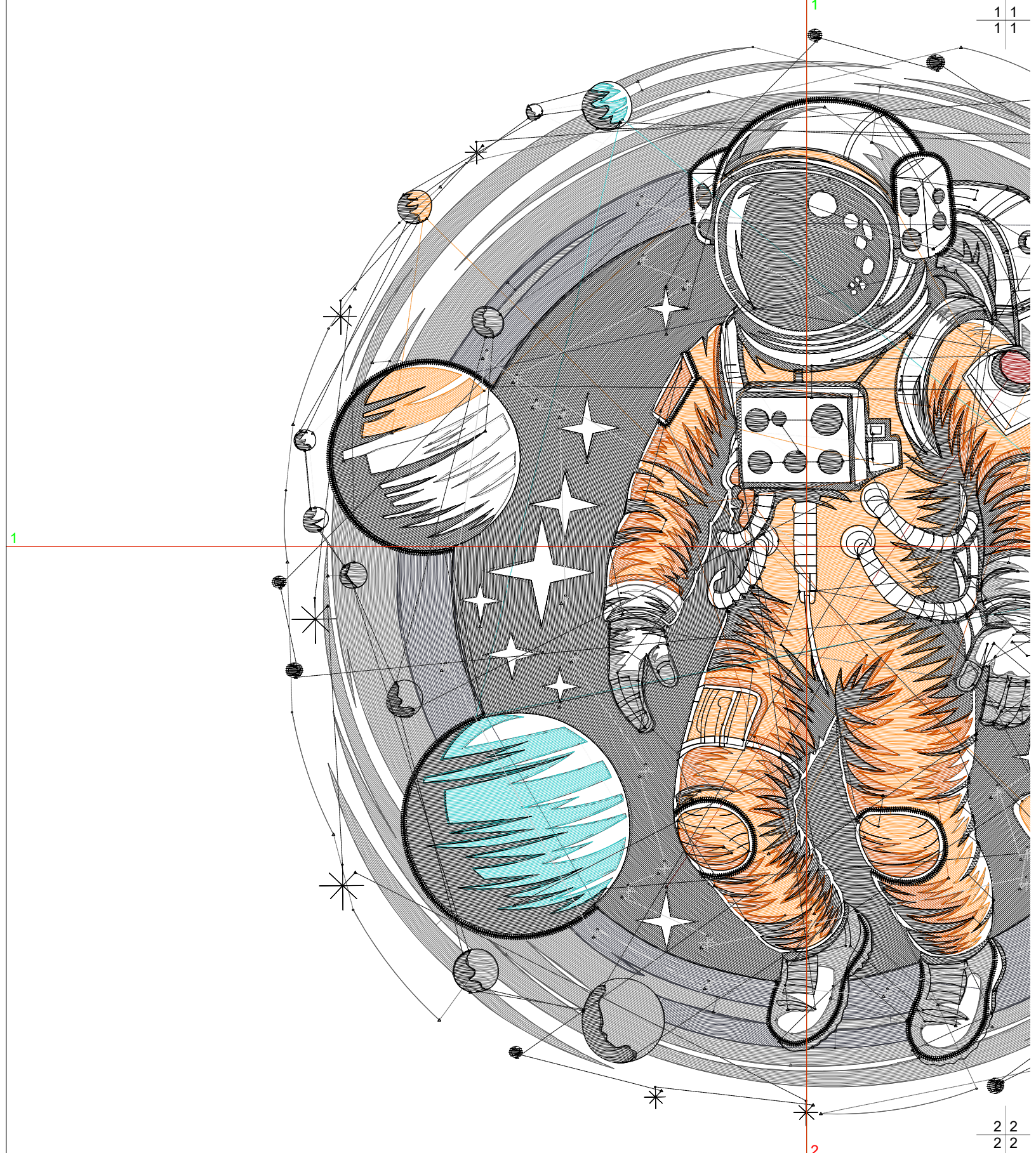
Wilcom EmbroideryStudio - Designing



Design: **9**

Title:

Stitches: 95,596
Height: 9.00 in
Width: 8.88 in
Colors: 9
Colorway: Colorway 1
Zoom: 1:1



Production Worksheet

Wilcom EmbroideryStudio - Designing

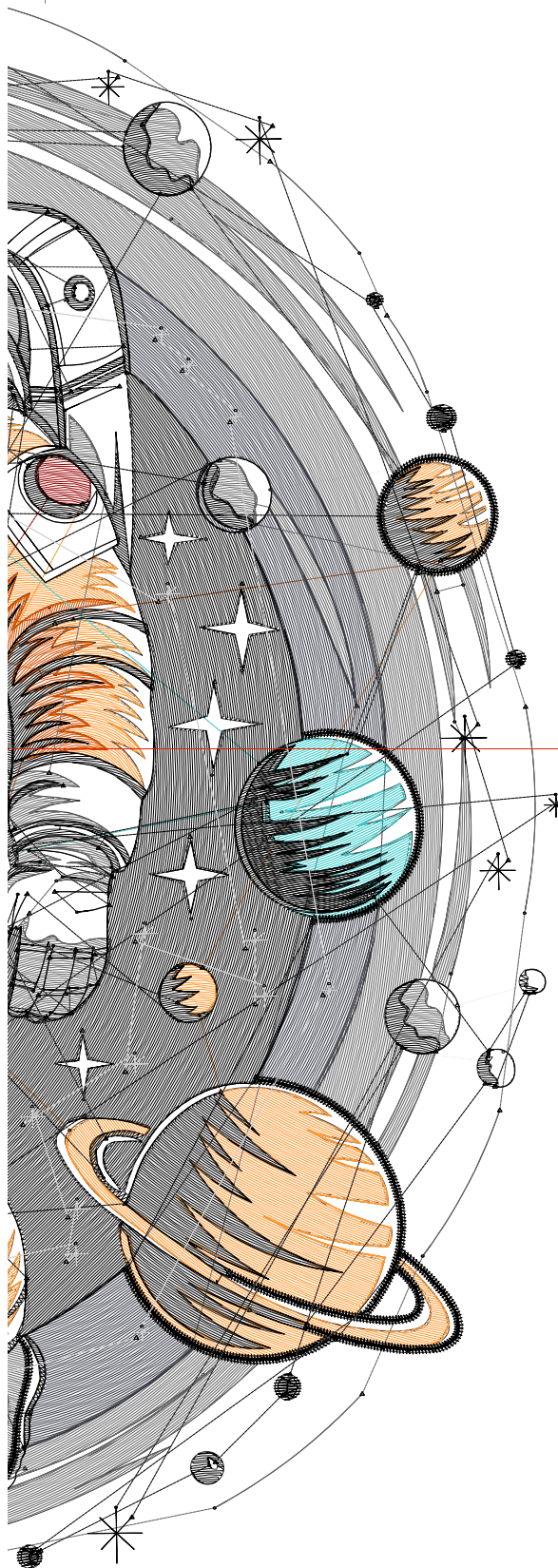


Design: **9**

Title:

Stitches: 95,596
 Height: 9.00 in
 Width: 8.88 in
 Colors: 9
 Colorway: Colorway 1
 Zoom: 1:1

1 1
1 1



Machine format: Tajima
 Color changes: 8
 Stops: 9
 Trims: 376
 Appliqués: 0
 Left: 111.5 mm
 Right: 114.0 mm
 Up: 107.8 mm
 Down: 120.7 mm
 EndX: 0.00 in
 EndY: 0.00 in
 Area: 79.90 in²
 Max stitch: 7.0 mm
 Min stitch: 0.0 mm
 Max jump: 7.0 mm
 Total thread: 1348.05ft
 Total bobbin: 425.38ft

Stop Sequence:

#	N#	Color	St.	Code	Name	Chart
1.	9		19,620	9	White	Default
2.	11		119	11	Dark Red	Default
3.	12		11,621	12	Orange	Default
4.	2		6,119		R212 G78 B0	
5.	18		12,495	18	Grey	Default
6.	4		3,812		R54 G56 B69	
7.	5		2,459	5	Aqua	Default
8.	8		38,736	8	Black	Default
9.	3		613		R204 G204 B204	

2 2
2 2

Production Worksheet

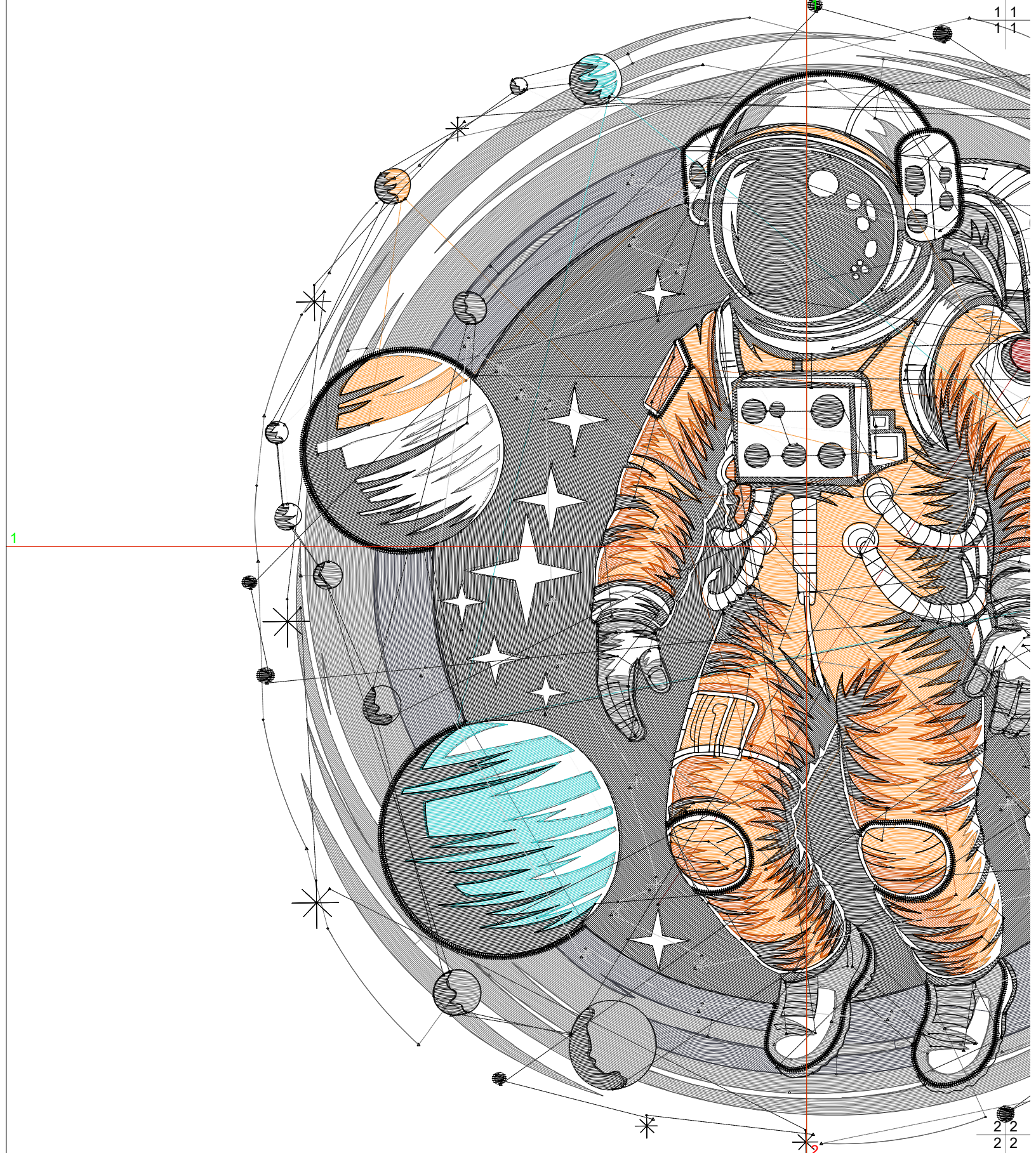
Wilcom EmbroideryStudio - Designing



Design: 9

Title:

Stitches: 102,928
Height: 9.50 in
Width: 9.37 in
Colors: 9
Colorway: Colorway 1
Zoom: 1:1



Production Worksheet

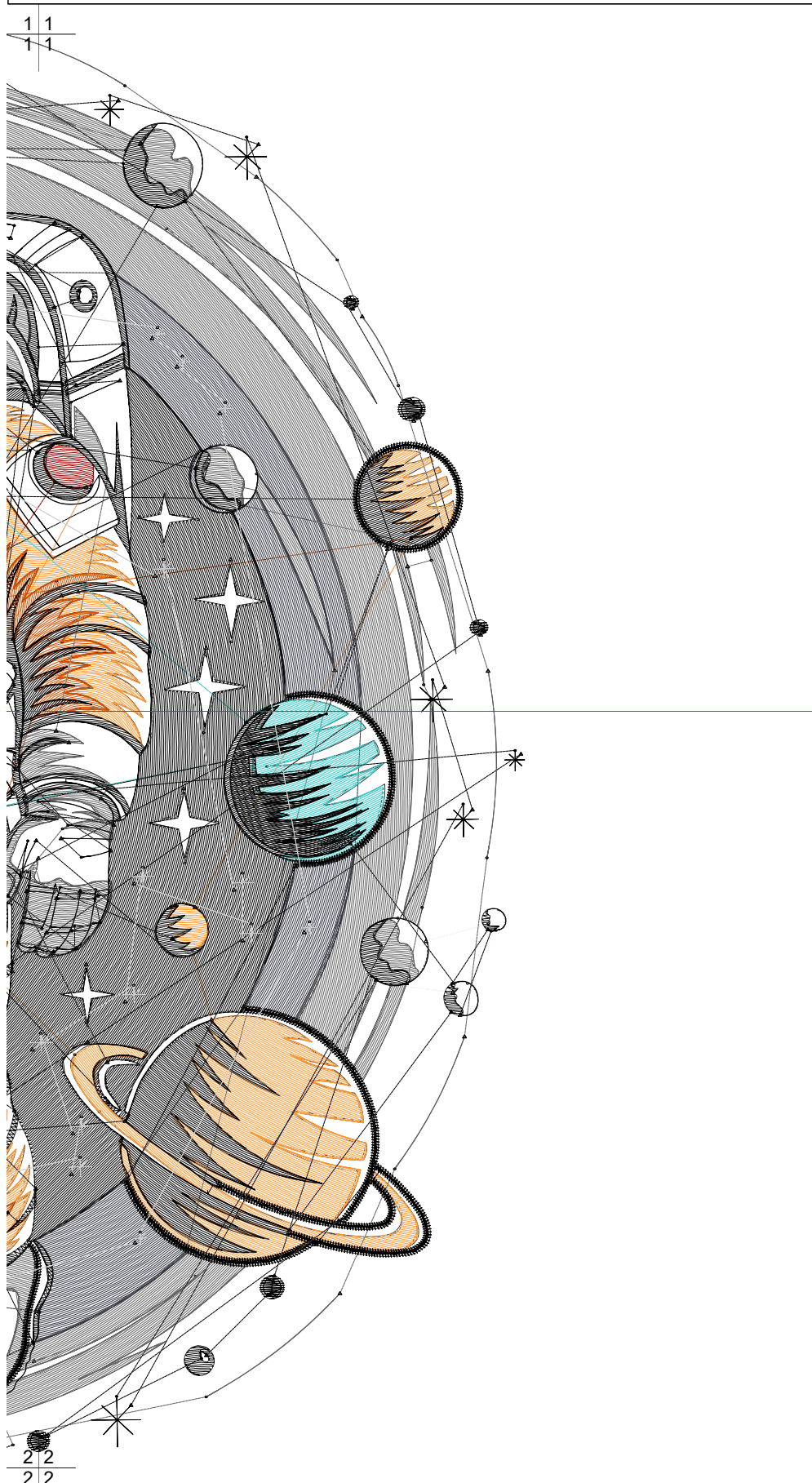
Wilcom EmbroideryStudio - Designing



Design: **9**

Title:

Stitches: 102,928
 Height: 9.50 in
 Width: 9.37 in
 Colors: 9
 Colorway: Colorway 1
 Zoom: 1:1



Machine format: Tajima
 Color changes: 8
 Stops: 9
 Trims: 380
 Appliqués: 0
 Left: 117.7 mm
 Right: 120.3 mm
 Up: 114.2 mm
 Down: 127.1 mm
 EndX: 0.00 in
 EndY: 0.00 in
 Area: 89.02 in²
 Max stitch: 7.0 mm
 Min stitch: 0.0 mm
 Max jump: 7.0 mm
 Total thread: 1468.34ft
 Total bobbin: 468.15ft

Stop Sequence:

#	N#	Color	St.	Code	Name	Chart
1.	9		21,004	9	White	Default
2.	11		128	11	Dark Red	Default
3.	12		12,585	12	Orange	Default
4.	2		6,333		R212 G78 B0	
5.	18		13,563	18	Grey	Default
6.	4		4,163		R54 G56 B69	
7.	5		2,677	5	Aqua	Default
8.	8		41,856	8	Black	Default
9.	3		617		R204 G204 B204	

Production Worksheet

Wilcom EmbroideryStudio - Designing

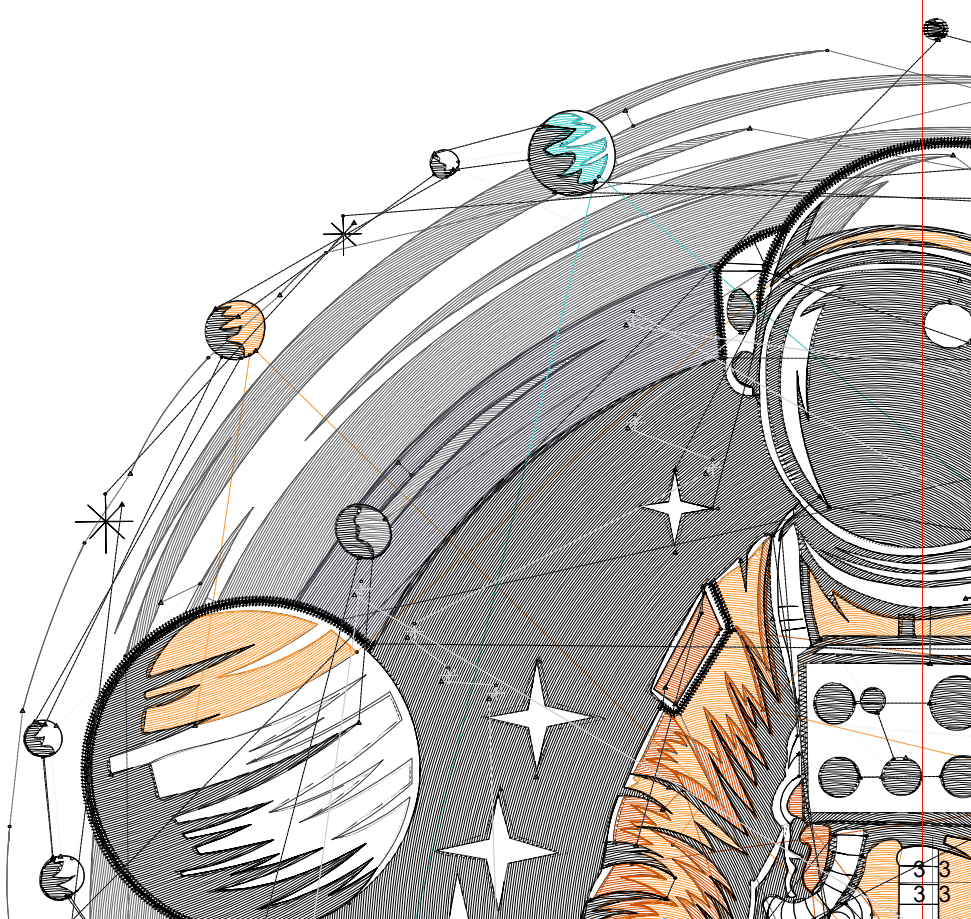


Design: **10**

Title:

Stitches: 110,420
Height: 10.00 in
Width: 9.86 in
Colors: 9
Colorway: Colorway 1
Zoom: 1:1

1 1
1 1



2 2
2 2
1

5 3
3 3

Production Worksheet

Wilcom EmbroideryStudio - Designing

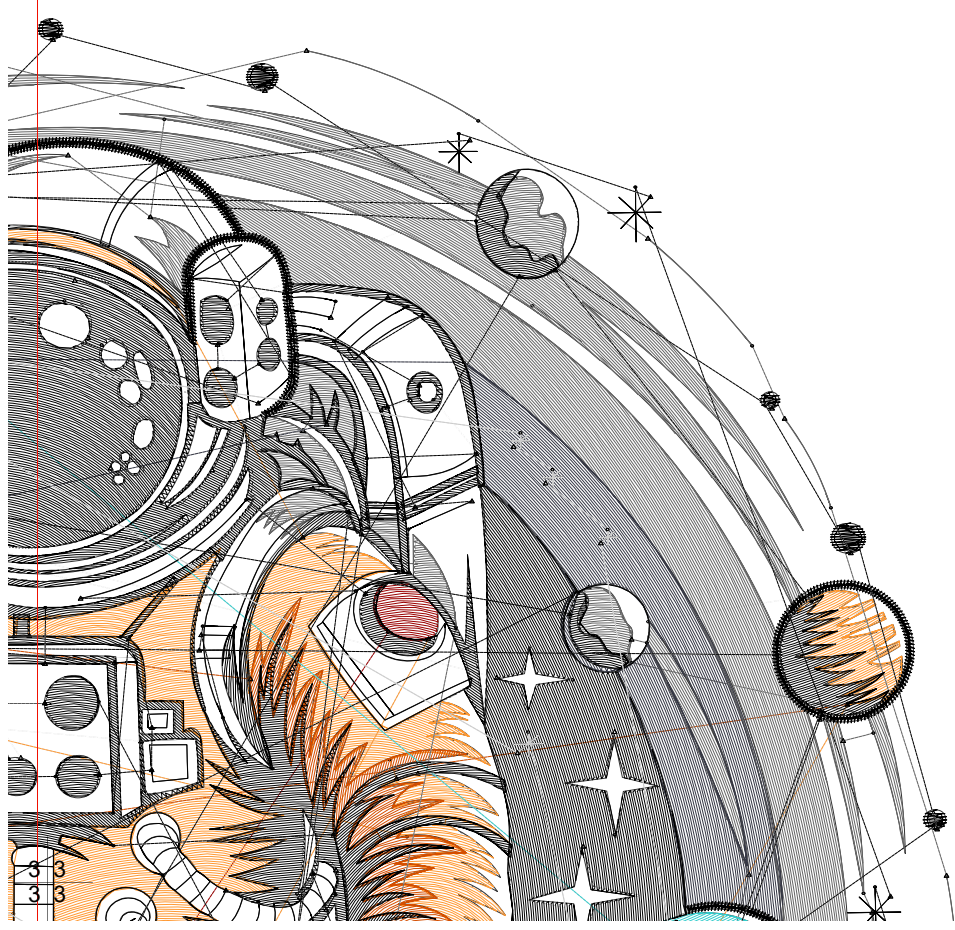


Design: **10**

Title:

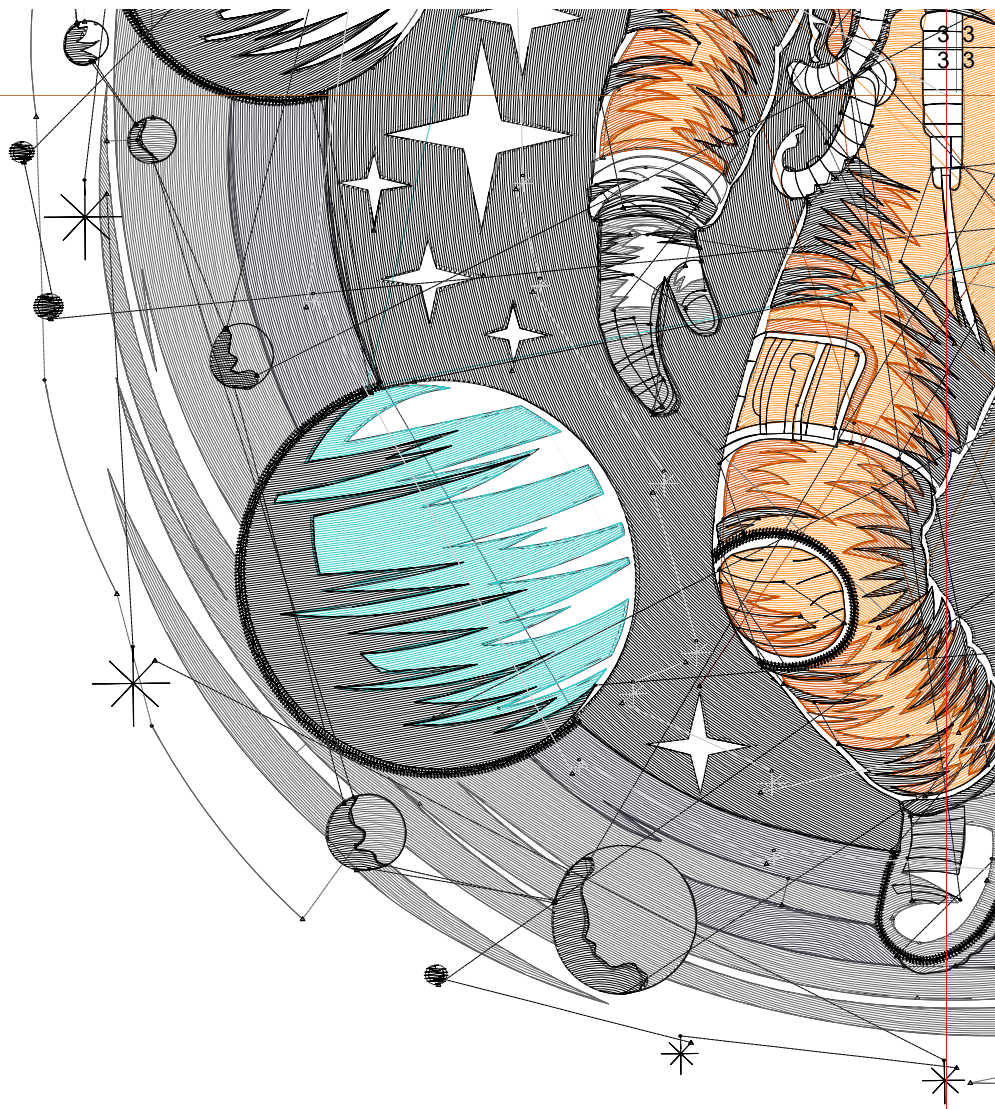
Stitches: 110,420
Height: 10.00 in
Width: 9.86 in
Colors: 9
Colorway: Colorway 1
Zoom: 1:1

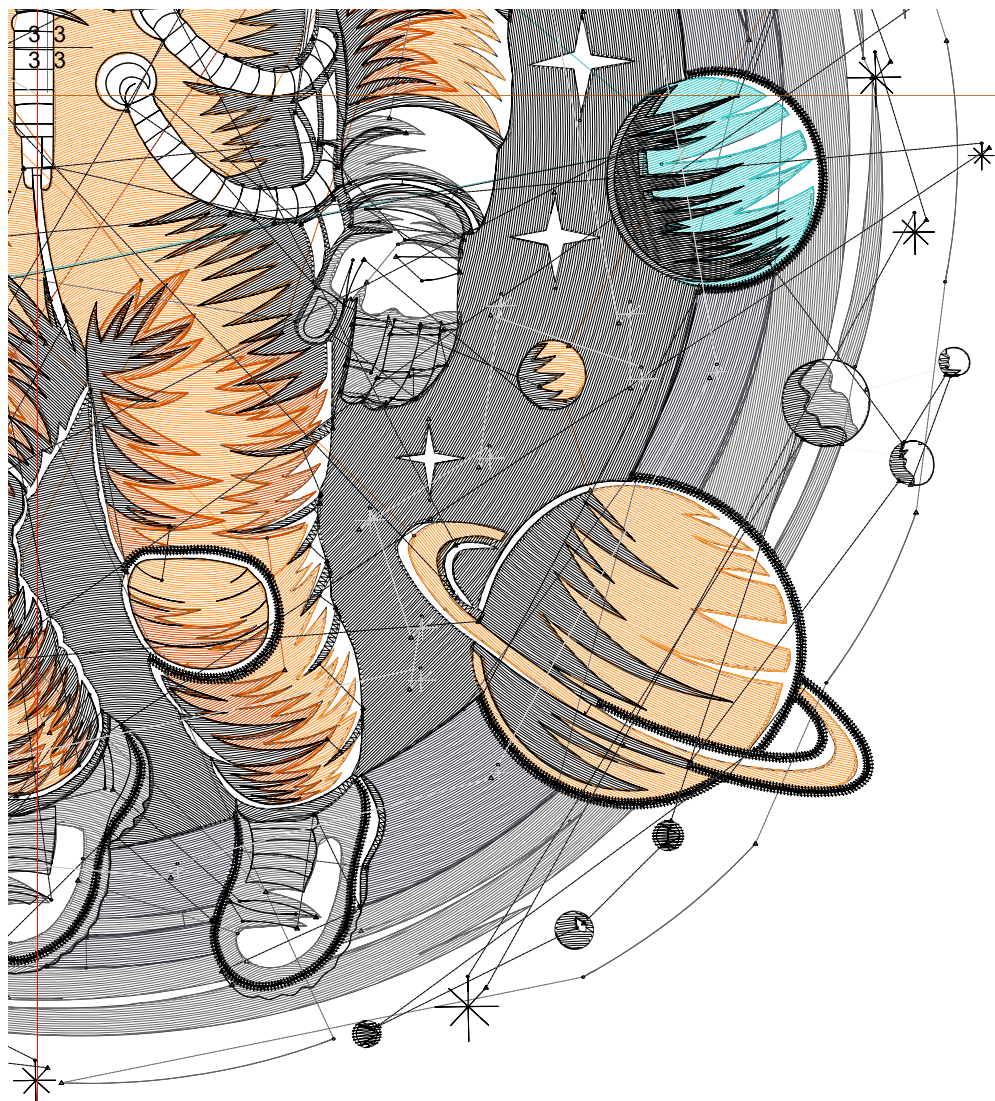
1 1
1 1



3 3
3 3

4 4
4 4
2





Production Worksheet

Wilcom EmbroideryStudio - Designing



Design: **10**

Title:

Stitches: 110,420
 Height: 10.00 in
 Width: 9.86 in
 Colors: 9
 Colorway: Colorway 1
 Zoom: 1:1

Machine format: Tajima
 Color changes: 8
 Stops: 9
 Trims: 389
 Appliqués: 0
 Left: 124.0 mm
 Right: 126.5 mm
 Up: 120.6 mm
 Down: 133.4 mm
 EndX: 0.00 in
 EndY: 0.00 in
 Area 98.64 in²
 Max stitch: 7.0 mm
 Min stitch: 0.0 mm
 Max jump: 7.0 mm
 Total thread: 1592.44ft
 Total bobbin: 512.56ft

Stop Sequence:

#	N#	Color	St.	Code	Name	Chart
1.	9		22,414	9	White	Default
2.	11		134	11	Dark Red	Default
3.	12		13,599	12	Orange	Default
4.	2		6,901		R212 G78 B0	
5.	18		14,824	18	Grey	Default
6.	4		4,514		R54 G56 B69	
7.	5		2,590	5	Aqua	Default
8.	8		44,800	8	Black	Default
9.	3		642		R204 G204 B204	

Production Worksheet

Wilcom EmbroideryStudio - Designing

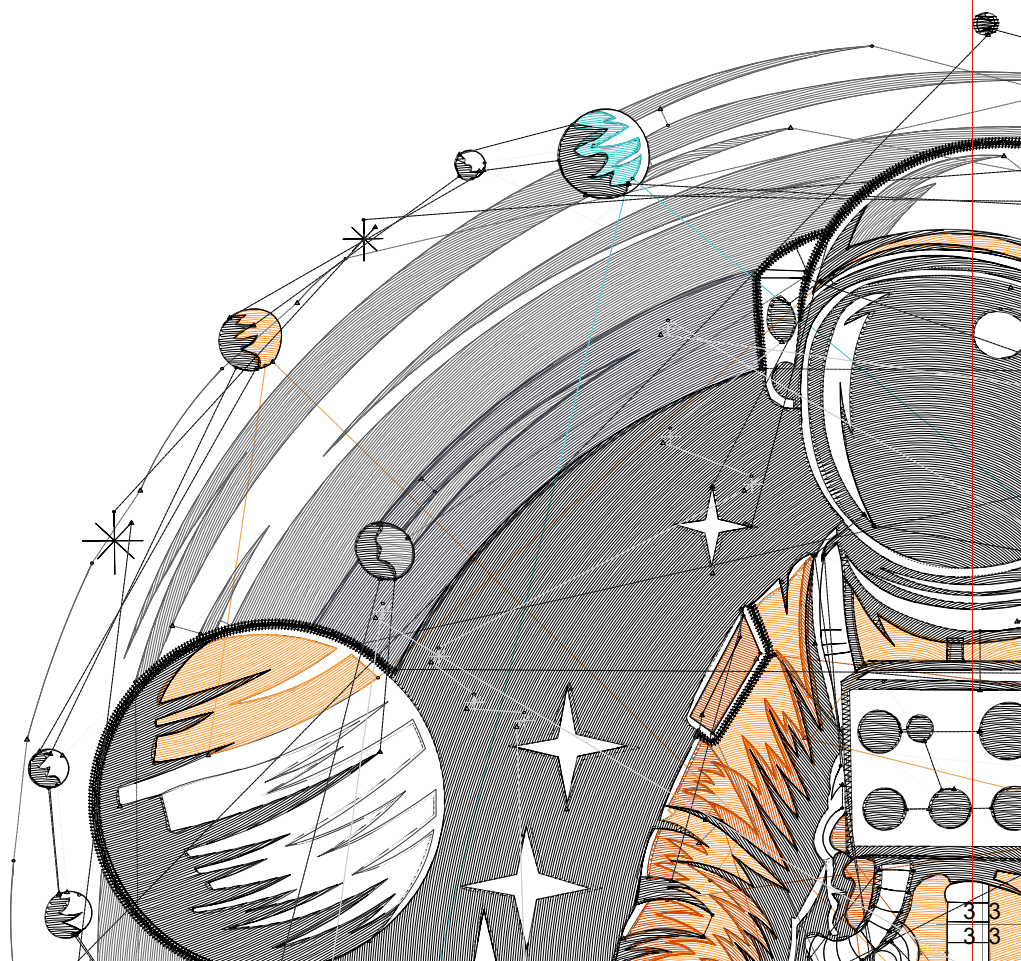


Design: **10**

Title:

Stitches: 118,202
Height: 10.50 in
Width: 10.36 in
Colors: 9
Colorway: Colorway 1
Zoom: 1:1

1 1
1 1



2 2
2 2
1

3 3
3 3

Production Worksheet

Wilcom EmbroideryStudio - Designing

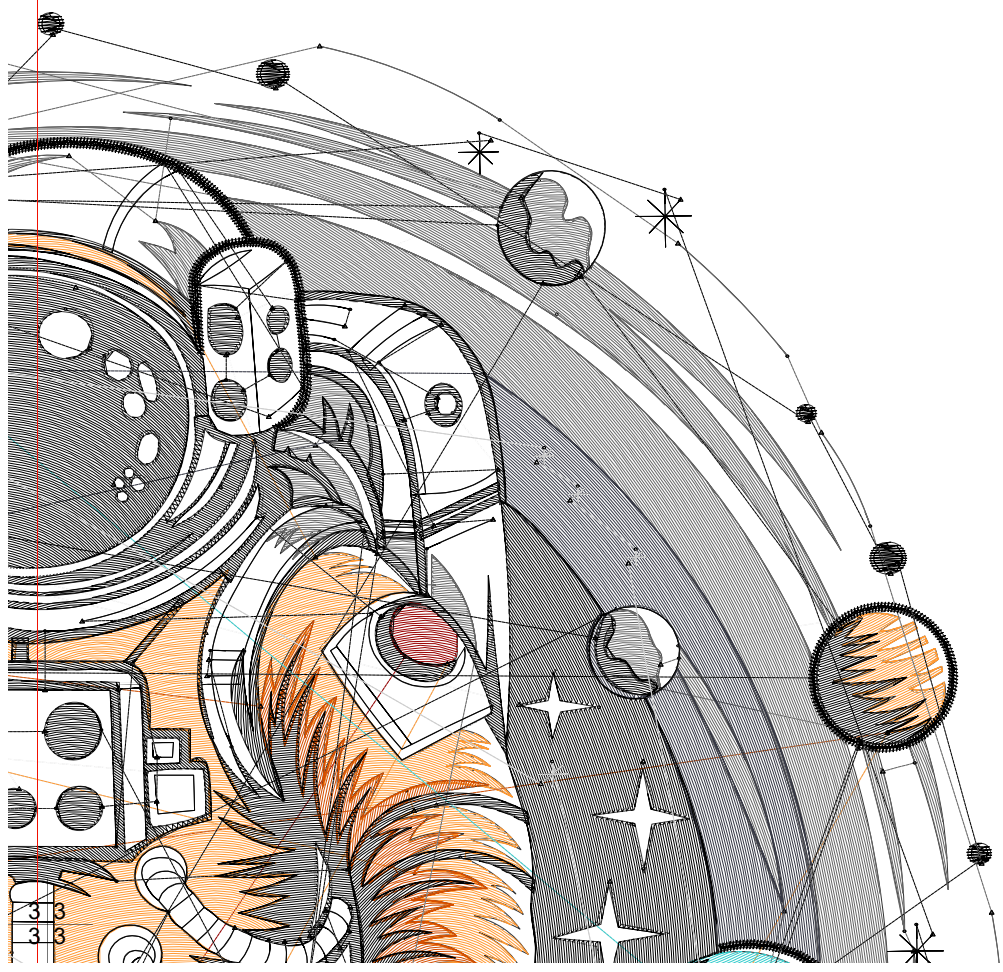


Design: **10**

Title:

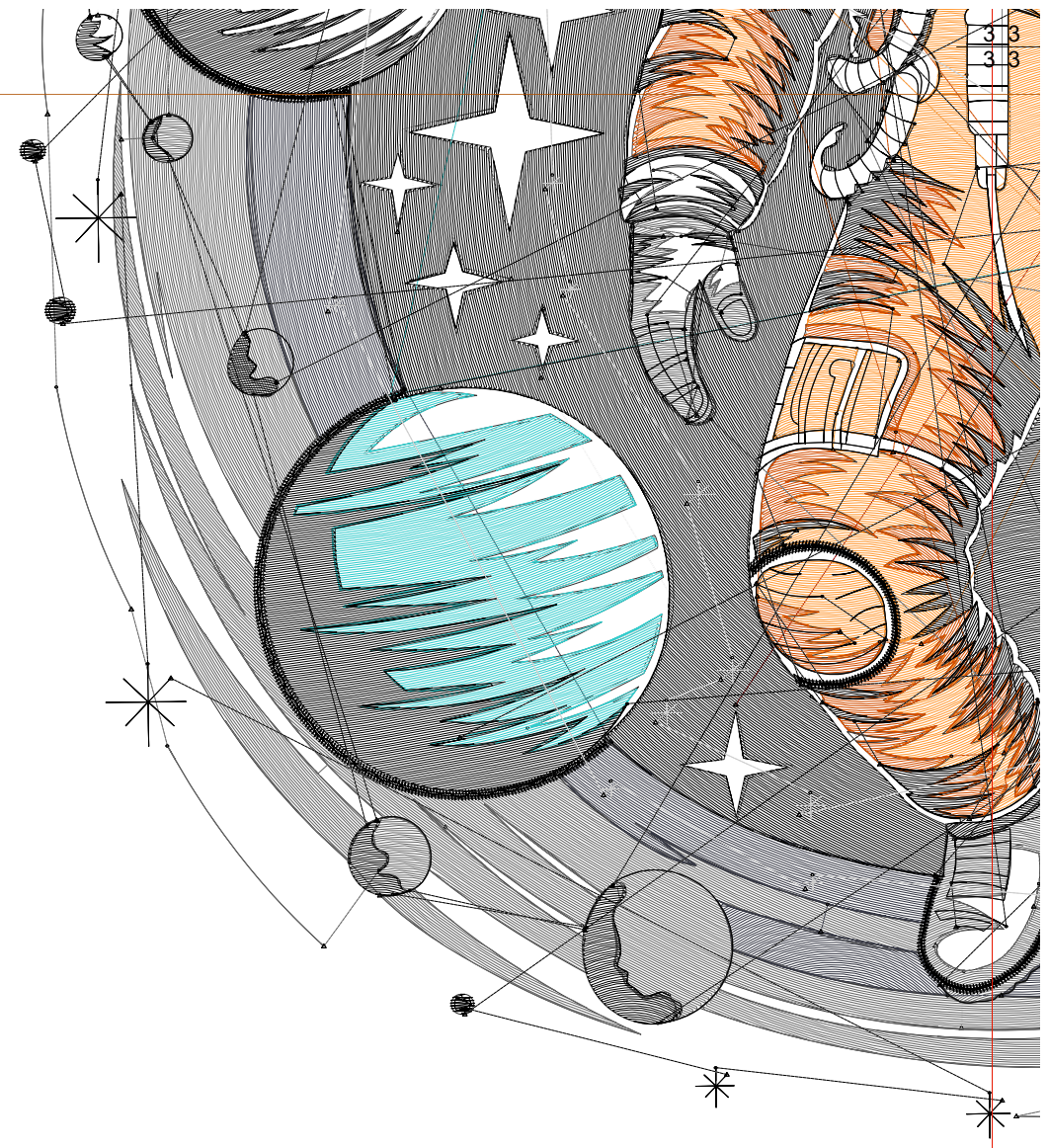
Stitches: 118,202
Height: 10.50 in
Width: 10.36 in
Colors: 9
Colorway: Colorway 1
Zoom: 1:1

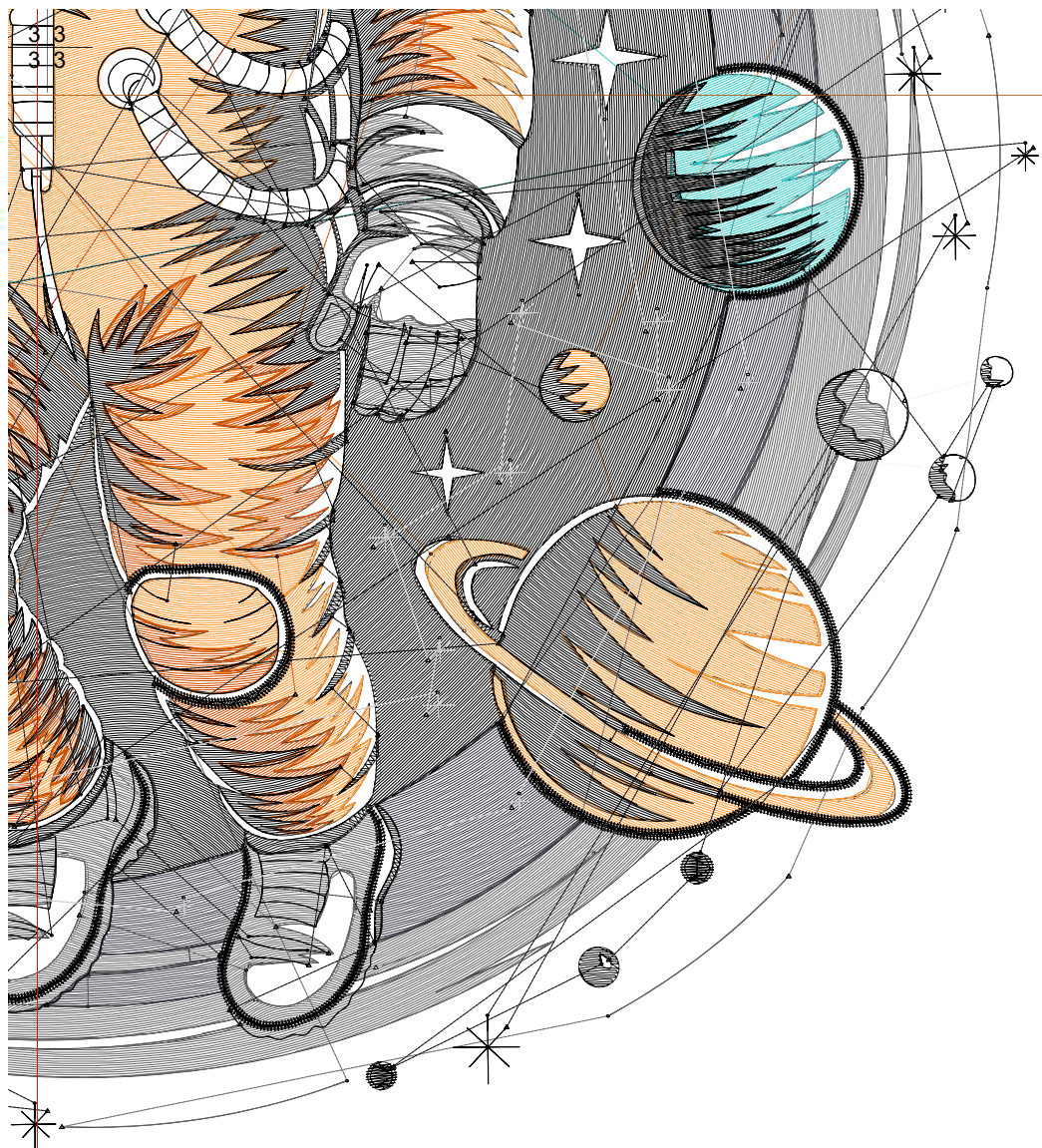
1 1
1 1



3 3
3 3

4 4
4 4
2





Production Worksheet

Wilcom EmbroideryStudio - Designing



Design: **10**

Title:

Stitches: 118,202
 Height: 10.50 in
 Width: 10.36 in
 Colors: 9
 Colorway: Colorway 1
 Zoom: 1:1

Machine format: Tajima
 Color changes: 8
 Stops: 9
 Trims: 392
 Appliqués: 0
 Left: 130.3 mm
 Right: 132.8 mm
 Up: 126.9 mm
 Down: 139.8 mm
 EndX: 0.00 in
 EndY: 0.00 in
 Area 108.74 in²
 Max stitch: 7.0 mm
 Min stitch: 0.0 mm
 Max jump: 7.0 mm
 Total thread: 1721.59ft
 Total bobbin: 558.84ft

Stop Sequence:

#	N#	Color	St.	Code	Name	Chart
1.	9		24,025	9	White	Default
2.	11		148	11	Dark Red	Default
3.	12		14,503	12	Orange	Default
4.	2		7,336		R212 G78 B0	
5.	18		15,717	18	Grey	Default
6.	4		4,949		R54 G56 B69	
7.	5		3,118	5	Aqua	Default
8.	8		47,748	8	Black	Default
9.	3		656		R204 G204 B204	