

Production Worksheet

Wilcom EmbroideryStudio - Designing



Design: **3**

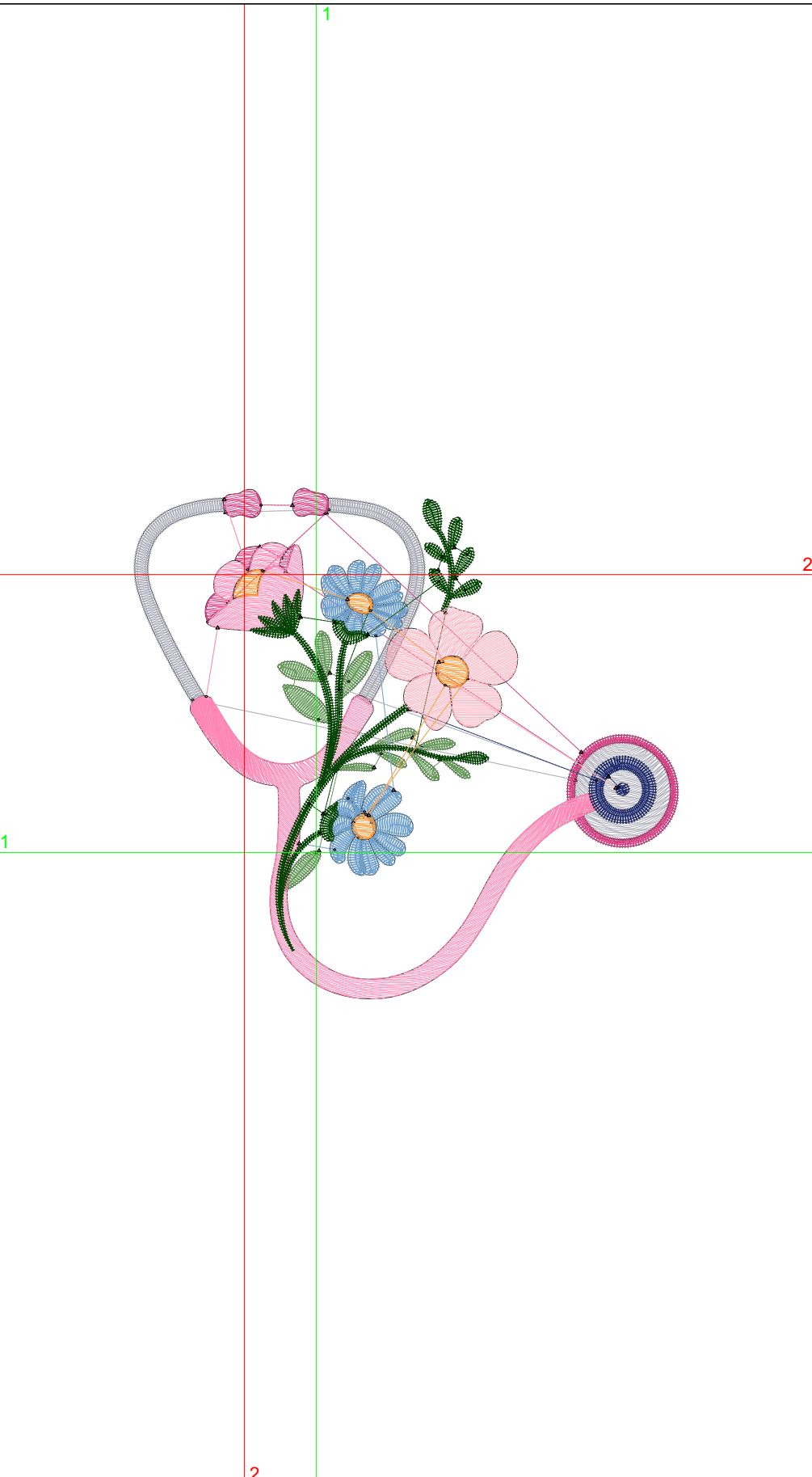
Title:

Stitches: 8,143
 Height: 3.29 in
 Width: 3.51 in
 Colors: 9
 Colorway: Colorway 1
 Zoom: 1:1

Machine format: Tajima
 Color changes: 8
 Stops: 9
 Trims: 38
 Appliqués: 0
 Left: 29.9 mm
 Right: 59.3 mm
 Up: 59.5 mm
 Down: 23.9 mm
 EndX: -0.46 in
 EndY: 1.79 in
 Area: 11.54 in²
 Max stitch: 11.5 mm
 Min stitch: 0.0 mm
 Max jump: 7.0 mm
 Total thread: 115.94ft
 Total bobbin: 35.29ft

Stop Sequence:

#	N#	Color	St.	Code	Name	Chart
1.	2		676		R100 G153 B88	
2.	1		996		R173 G173 B186	
3.	4		658		R217 G62 B131	
4.	7		1,798		R255 G133 B180	
5.	6		1,184		R111 G160 B204	
6.	3		1,612		R0 G69 B0	
7.	5		261		R32 G44 B110	
8.	8		683		R255 G175 B189	
9.	12		273	12	Orange	Default



Production Worksheet

Wilcom EmbroideryStudio - Designing



Design: **4**

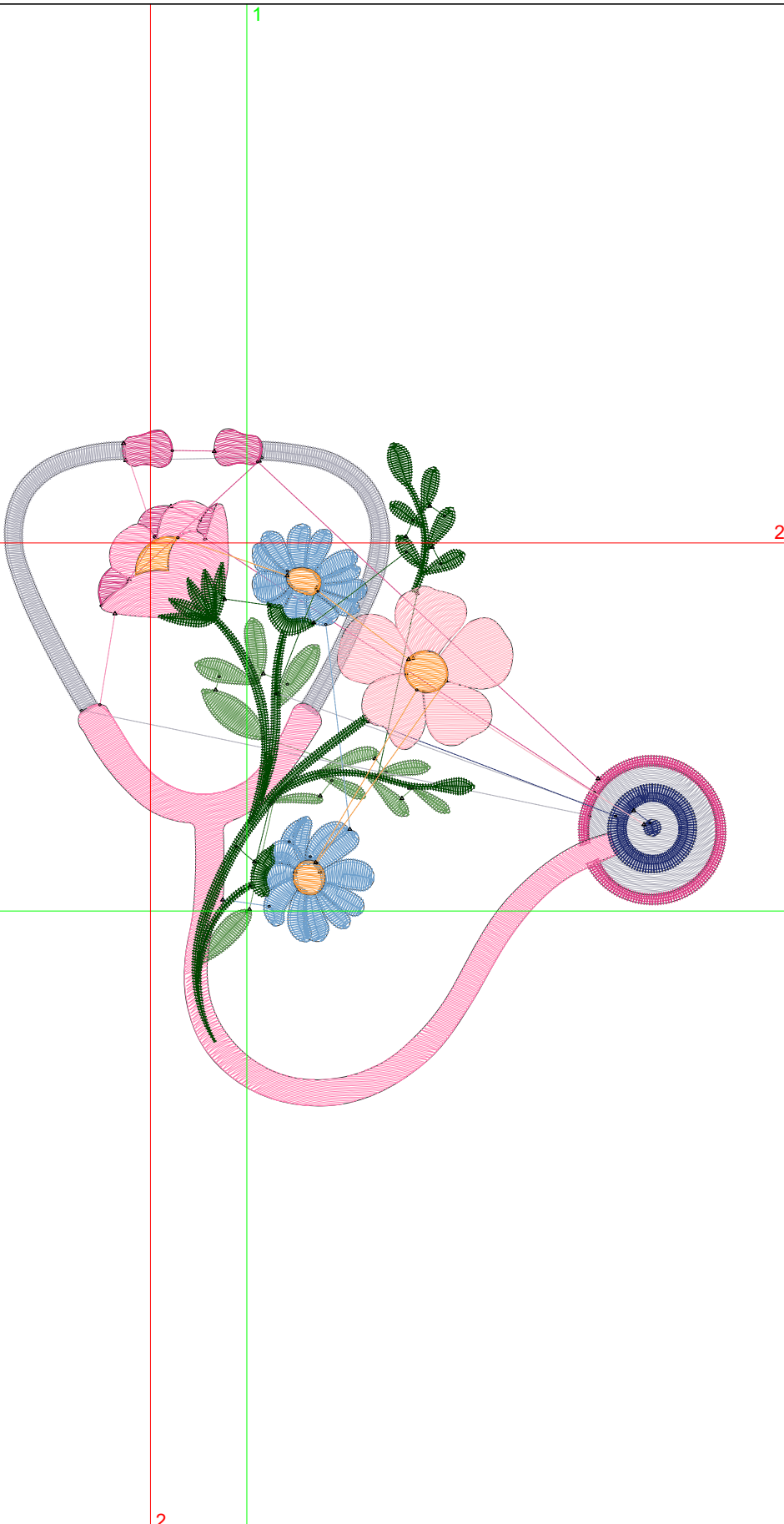
Title:

Stitches: 11,184
 Height: 4.22 in
 Width: 4.51 in
 Colors: 9
 Colorway: Colorway 1
 Zoom: 1:1

Machine format: Tajima
 Color changes: 8
 Stops: 9
 Trims: 41
 Appliqués: 0
 Left: 38.6 mm
 Right: 76.1 mm
 Up: 76.4 mm
 Down: 30.9 mm
 EndX: -0.60 in
 EndY: 2.30 in
 Area: 19.06 in²
 Max stitch: 7.3 mm
 Min stitch: 0.0 mm
 Max jump: 6.9 mm
 Total thread: 166.58ft
 Total bobbin: 53.47ft

Stop Sequence:

#	N#	Color	St.	Code	Name	Chart
1.	2		859		R100 G153 B88	
2.	1		1,416		R173 G173 B186	
3.	4		877		R217 G62 B131	
4.	7		2,818		R255 G133 B180	
5.	6		1,472		R111 G160 B204	
6.	3		2,041		R0 G69 B0	
7.	5		330		R32 G44 B110	
8.	8		996		R255 G175 B189	
9.	12		373	12	Orange	Default



Production Worksheet

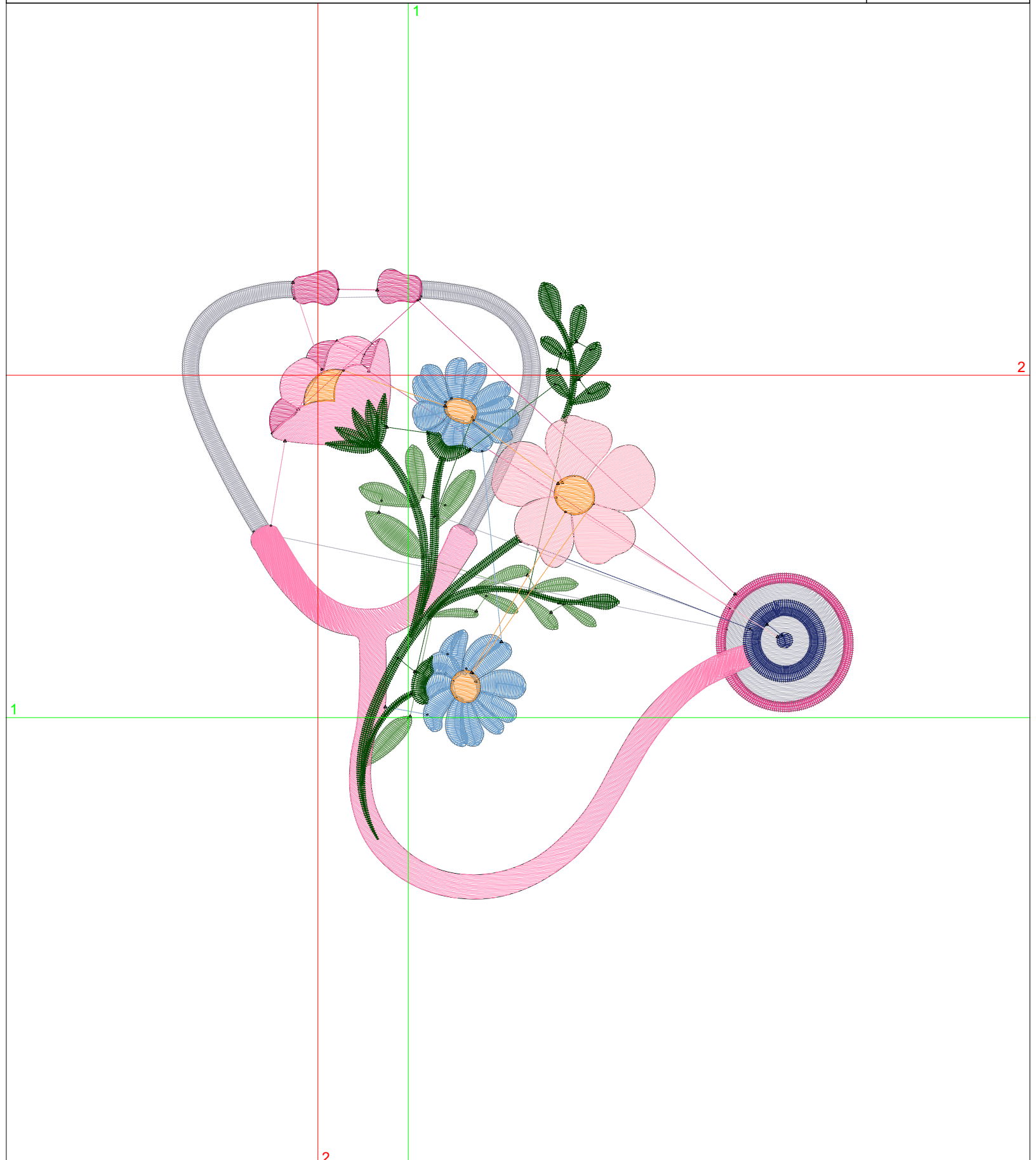
Wilcom EmbroideryStudio - Designing



Design: **5**

Title:

Stitches: 14,096
Height: 5.16 in
Width: 5.51 in
Colors: 9
Colorway: Colorway 1
Zoom: 1:1



Production Worksheet

Wilcom EmbroideryStudio - Designing



Design: **5**

Title:

Stitches: 14,096
 Height: 5.16 in
 Width: 5.51 in
 Colors: 9
 Colorway: Colorway 1
 Zoom: 1:1

Machine format: Tajima
 Color changes: 8
 Stops: 9
 Trims: 42
 Appliqués: 0
 Left: 47.2 mm
 Right: 92.8 mm
 Up: 93.3 mm
 Down: 37.8 mm
 EndX: -0.74 in
 EndY: 2.81 in
 Area 28.45 in²
 Max stitch: 8.8 mm
 Min stitch: 0.0 mm
 Max jump: 6.9 mm
 Total thread: 231.23ft
 Total bobbin: 80.46ft

Stop Sequence:

#	N#	Color	St.	Code	Name	Chart
1.	2		1,034		R100 G153 B88	
2.	1		1,867		R173 G173 B186	
3.	4		1,100		R217 G62 B131	
4.	7		3,593		R255 G133 B180	
5.	6		1,787		R111 G160 B204	
6.	3		2,471		R0 G69 B0	
7.	5		395		R32 G44 B110	
8.	8		1,356		R255 G175 B189	
9.	12		491	12	Orange	Default

Production Worksheet

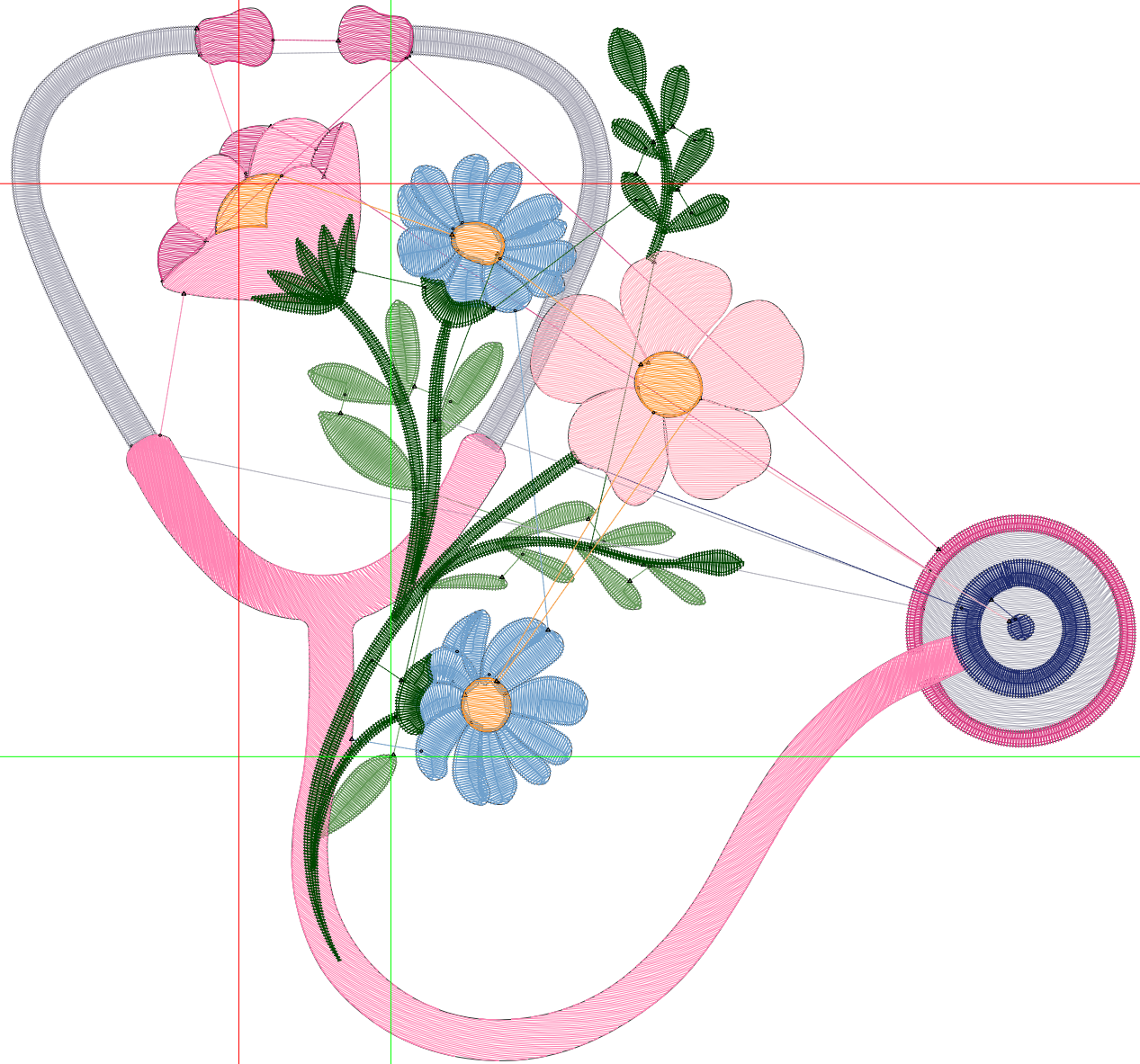
Wilcom EmbroideryStudio - Designing



Design: **6**

Title:

Stitches: 17,498
Height: 6.10 in
Width: 6.51 in
Colors: 9
Colorway: Colorway 1
Zoom: 1:1



Production Worksheet

Wilcom EmbroideryStudio - Designing



Design: **6**

Title:

Stitches: 17,498
 Height: 6.10 in
 Width: 6.51 in
 Colors: 9
 Colorway: Colorway 1
 Zoom: 1:1

Machine format: Tajima
 Color changes: 8
 Stops: 9
 Trims: 43
 Appliqués: 0
 Left: 55.9 mm
 Right: 109.6 mm
 Up: 110.3 mm
 Down: 44.7 mm
 EndX: -0.88 in
 EndY: 3.32 in
 Area 39.76 in²
 Max stitch: 10.2 mm
 Min stitch: 0.0 mm
 Max jump: 7.0 mm
 Total thread: 304.13ft
 Total bobbin: 110.43ft

Stop Sequence:

#	N#	Color	St.	Code	Name	Chart
1.	2		1,210		R100 G153 B88	
2.	1		2,387		R173 G173 B186	
3.	4		1,349		R217 G62 B131	
4.	7		4,667		R255 G133 B180	
5.	6		2,109		R111 G160 B204	
6.	3		2,913		R0 G69 B0	
7.	5		463		R32 G44 B110	
8.	8		1,772		R255 G175 B189	
9.	12		626	12	Orange	Default

Production Worksheet

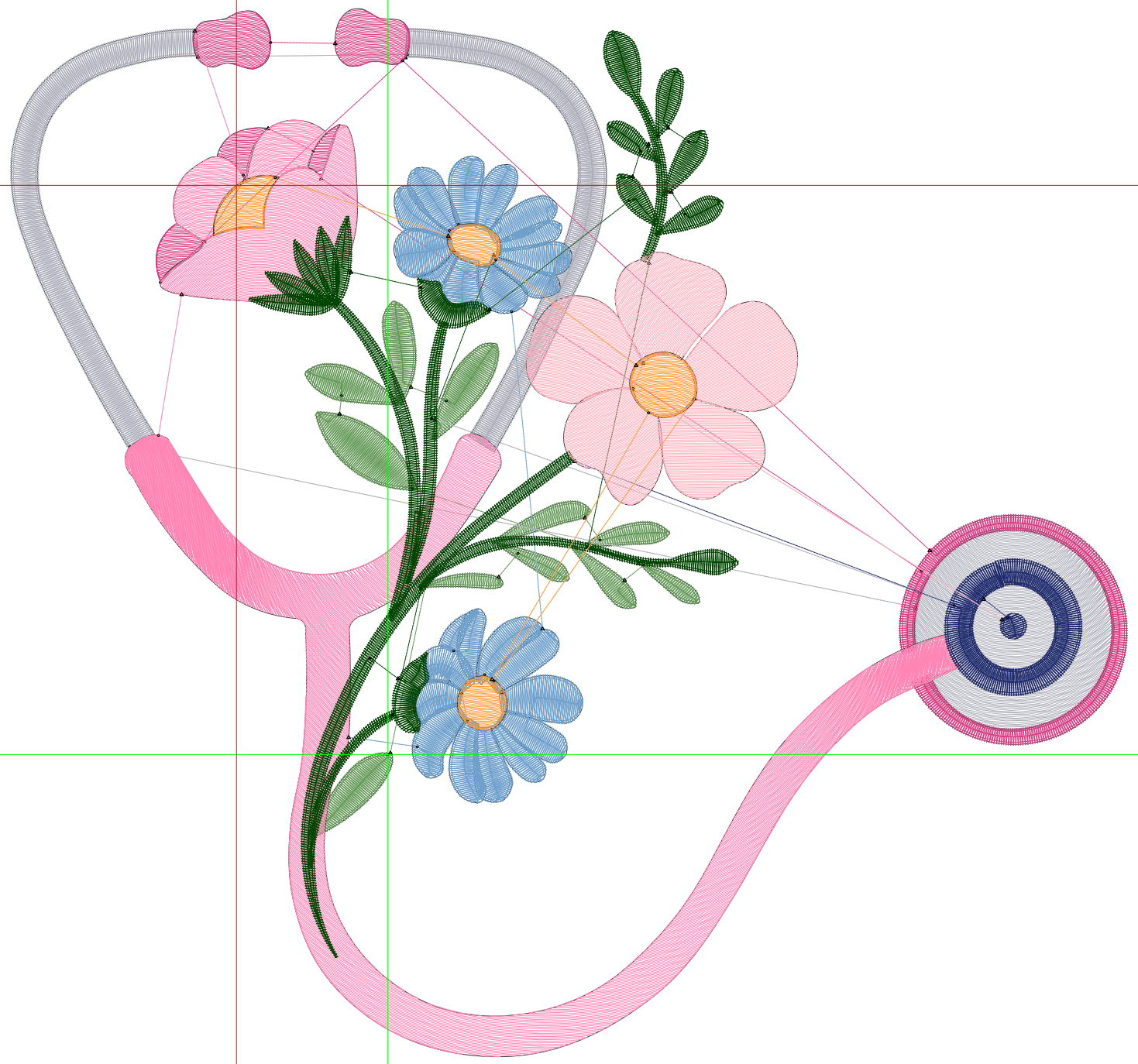
Wilcom EmbroideryStudio - Designing



Design: **7**

Title:

Stitches: 21,240
Height: 7.04 in
Width: 7.51 in
Colors: 9
Colorway: Colorway 1
Zoom: 1:1



Production Worksheet

Wilcom EmbroideryStudio - Designing



Design: **7**

Title:

Stitches: 21,240
 Height: 7.04 in
 Width: 7.51 in
 Colors: 9
 Colorway: Colorway 1
 Zoom: 1:1

Machine format: Tajima
 Color changes: 8
 Stops: 9
 Trims: 43
 Appliqués: 0
 Left: 64.5 mm
 Right: 126.3 mm
 Up: 127.3 mm
 Down: 51.6 mm
 EndX: -1.02 in
 EndY: 3.83 in
 Area 52.90 in²
 Max stitch: 11.7 mm
 Min stitch: 0.0 mm
 Max jump: 7.0 mm
 Total thread: 388.68ft
 Total bobbin: 145.99ft

Stop Sequence:

#	N#	Color	St.	Code	Name	Chart
1.	2		1,392		R100 G153 B88	
2.	1		2,973		R173 G173 B186	
3.	4		1,605		R217 G62 B131	
4.	7		5,943		R255 G133 B180	
5.	6		2,446		R111 G160 B204	
6.	3		3,357		R0 G69 B0	
7.	5		536		R32 G44 B110	
8.	8		2,235		R255 G175 B189	
9.	12		751	12	Orange	Default