

# Production Worksheet

Wilcom EmbroideryStudio - Designing



Design: **3**

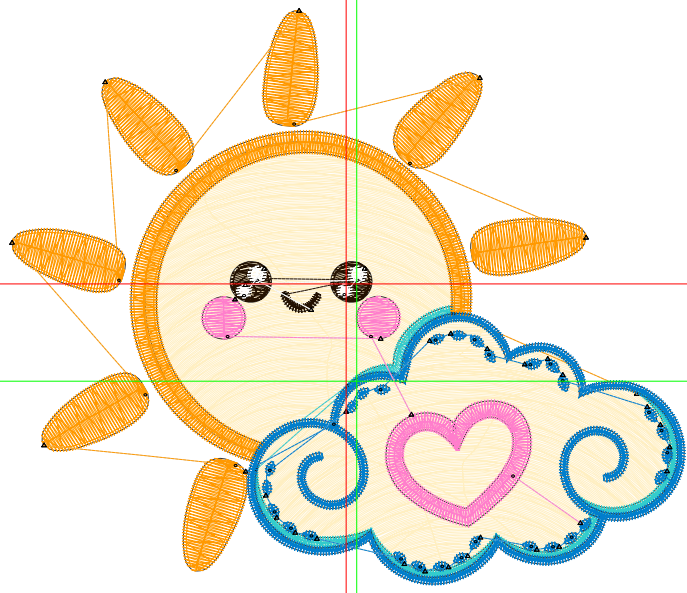
Title:

Stitches: 12,662  
 Height: 2.99 in  
 Width: 3.51 in  
 Colors: 7  
 Colorway: Colorway 1  
 Zoom: 1:1

Machine format: Tajima  
 Color changes: 6  
 Stops: 7  
 Trims: 42  
 Appliqués: 0  
 Left: 45.6 mm  
 Right: 43.5 mm  
 Up: 49.1 mm  
 Down: 27.0 mm  
 EndX: -0.06 in  
 EndY: 0.51 in  
 Area: 10.50 in<sup>2</sup>  
 Max stitch: 11.7 mm  
 Min stitch: 0.0 mm  
 Max jump: 6.6 mm  
 Total thread: 206.68ft  
 Total bobbin: 71.88ft

Stop Sequence:

#	N#	Color	St.	Code	Name	Chart
1.	3		6,158		R255 G239 B194	
2.	5		858	5	Aqua	Default
3.	4		1,823		R255 G153 B1	
4.	1		2,608		R1 G126 B204	
5.	15		603	15	Pink	Default
6.	2		463		R36 G17 B1	
7.	9		147	9	White	Default



# Production Worksheet

Wilcom EmbroideryStudio - Designing



Design: **4**

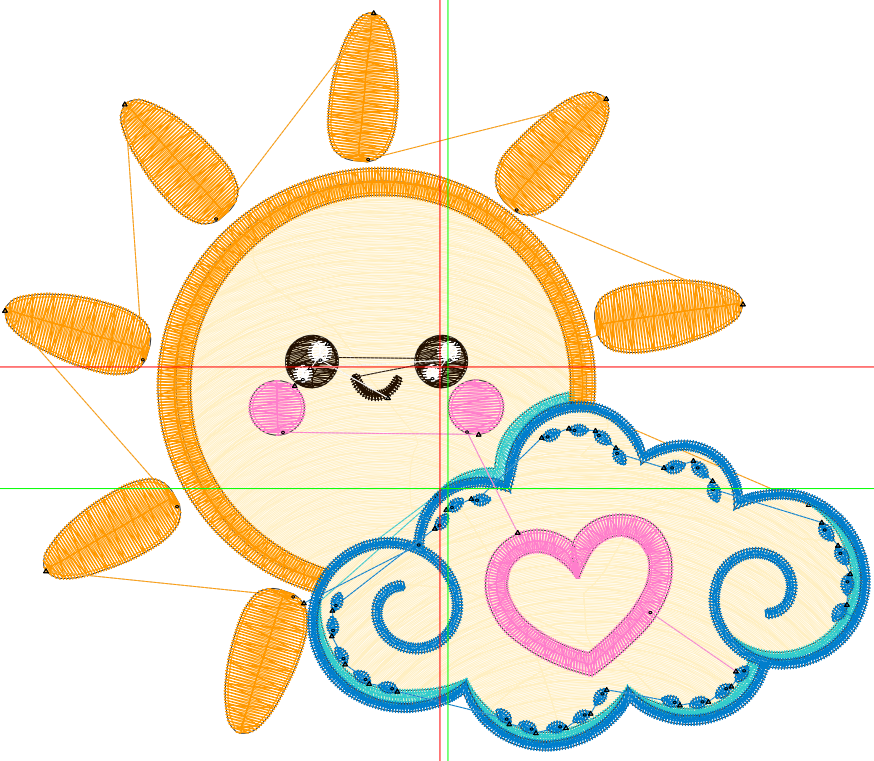
Title:

Stitches: 17,770  
 Height: 3.85 in  
 Width: 4.51 in  
 Colors: 7  
 Colorway: Colorway 1  
 Zoom: 1:1

Machine format: Tajima  
 Color changes: 6  
 Stops: 7  
 Trims: 47  
 Appliqués: 0  
 Left: 58.6 mm  
 Right: 55.9 mm  
 Up: 63.0 mm  
 Down: 34.7 mm  
 EndX: -0.04 in  
 EndY: 0.63 in  
 Area: 17.34 in<sup>2</sup>  
 Max stitch: 11.3 mm  
 Min stitch: 0.0 mm  
 Max jump: 6.8 mm  
 Total thread: 310.84ft  
 Total bobbin: 113.74ft

Stop Sequence:

#	N#	Color	St.	Code	Name	Chart
1.	3		9,690		R255 G239 B194	
2.	5		1,073	5	Aqua	Default
3.	4		2,317		R255 G153 B1	
4.	1		3,203		R1 G126 B204	
5.	15		740	15	Pink	Default
6.	2		578		R36 G17 B1	
7.	9		167	9	White	Default



# Production Worksheet

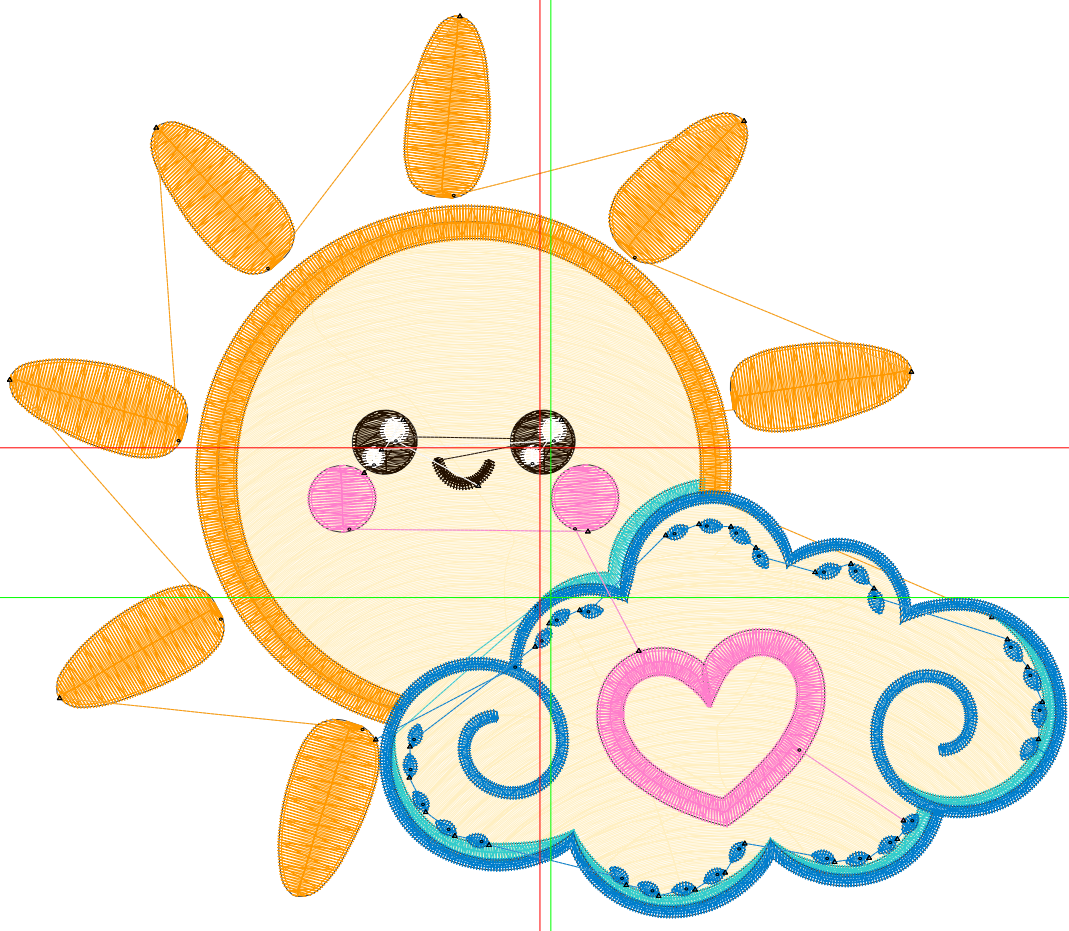
Wilcom EmbroideryStudio - Designing



Design: **5**

Title:

Stitches: 23,757  
Height: 4.70 in  
Width: 5.51 in  
Colors: 7  
Colorway: Colorway 1  
Zoom: 1:1



# Production Worksheet

Wilcom EmbroideryStudio - Designing



Design: **5**

Title:

Stitches: 23,757  
 Height: 4.70 in  
 Width: 5.51 in  
 Colors: 7  
 Colorway: Colorway 1  
 Zoom: 1:1

Machine format: Tajima  
 Color changes: 6  
 Stops: 7  
 Trims: 47  
 Appliqués: 0  
 Left: 71.6 mm  
 Right: 68.3 mm  
 Up: 77.0 mm  
 Down: 42.4 mm  
 EndX: -0.06 in  
 EndY: 0.78 in  
 Area 25.89 in<sup>2</sup>  
 Max stitch: 11.3 mm  
 Min stitch: 0.0 mm  
 Max jump: 6.9 mm  
 Total thread: 436.88ft  
 Total bobbin: 165.15ft

Stop Sequence:

#	N#	Color	St.	Code	Name	Chart
1.	3		14,079		R255 G239 B194	
2.	5		1,293	5	Aqua	Default
3.	4		2,836		R255 G153 B1	
4.	1		3,741		R1 G126 B204	
5.	15		893	15	Pink	Default
6.	2		720		R36 G17 B1	
7.	9		193	9	White	Default

# Production Worksheet

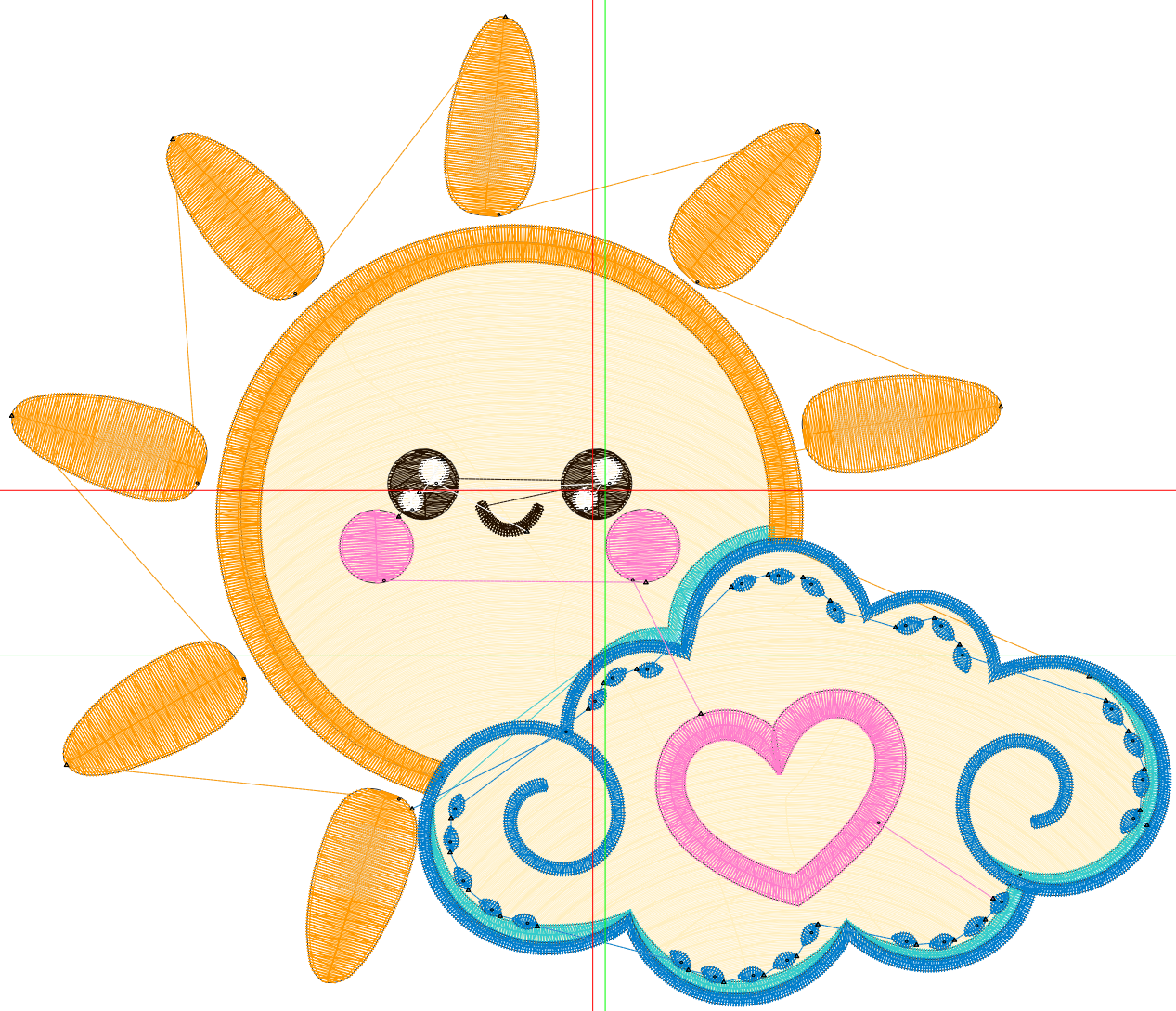
Wilcom EmbroideryStudio - Designing



Design: **6**

Title:

Stitches: 30,984  
Height: 5.55 in  
Width: 6.51 in  
Colors: 7  
Colorway: Colorway 1  
Zoom: 1:1



# Production Worksheet

Wilcom EmbroideryStudio - Designing



Design: **6**

Title:

Stitches: 30,984  
 Height: 5.55 in  
 Width: 6.51 in  
 Colors: 7  
 Colorway: Colorway 1  
 Zoom: 1:1

Machine format: Tajima  
 Color changes: 6  
 Stops: 7  
 Trims: 49  
 Appliqués: 0  
 Left: 84.6 mm  
 Right: 80.7 mm  
 Up: 91.0 mm  
 Down: 50.1 mm  
 EndX: -0.07 in  
 EndY: 0.92 in  
 Area 36.14 in<sup>2</sup>  
 Max stitch: 12.1 mm  
 Min stitch: 0.0 mm  
 Max jump: 7.0 mm  
 Total thread: 588.14ft  
 Total bobbin: 226.69ft

Stop Sequence:

#	N#	Color	St.	Code	Name	Chart
1.	3		19,346		R255 G239 B194	
2.	5		1,515	5	Aqua	Default
3.	4		3,700		R255 G153 B1	
4.	1		4,323		R1 G126 B204	
5.	15		1,034	15	Pink	Default
6.	2		852		R36 G17 B1	
7.	9		212	9	White	Default

# Production Worksheet

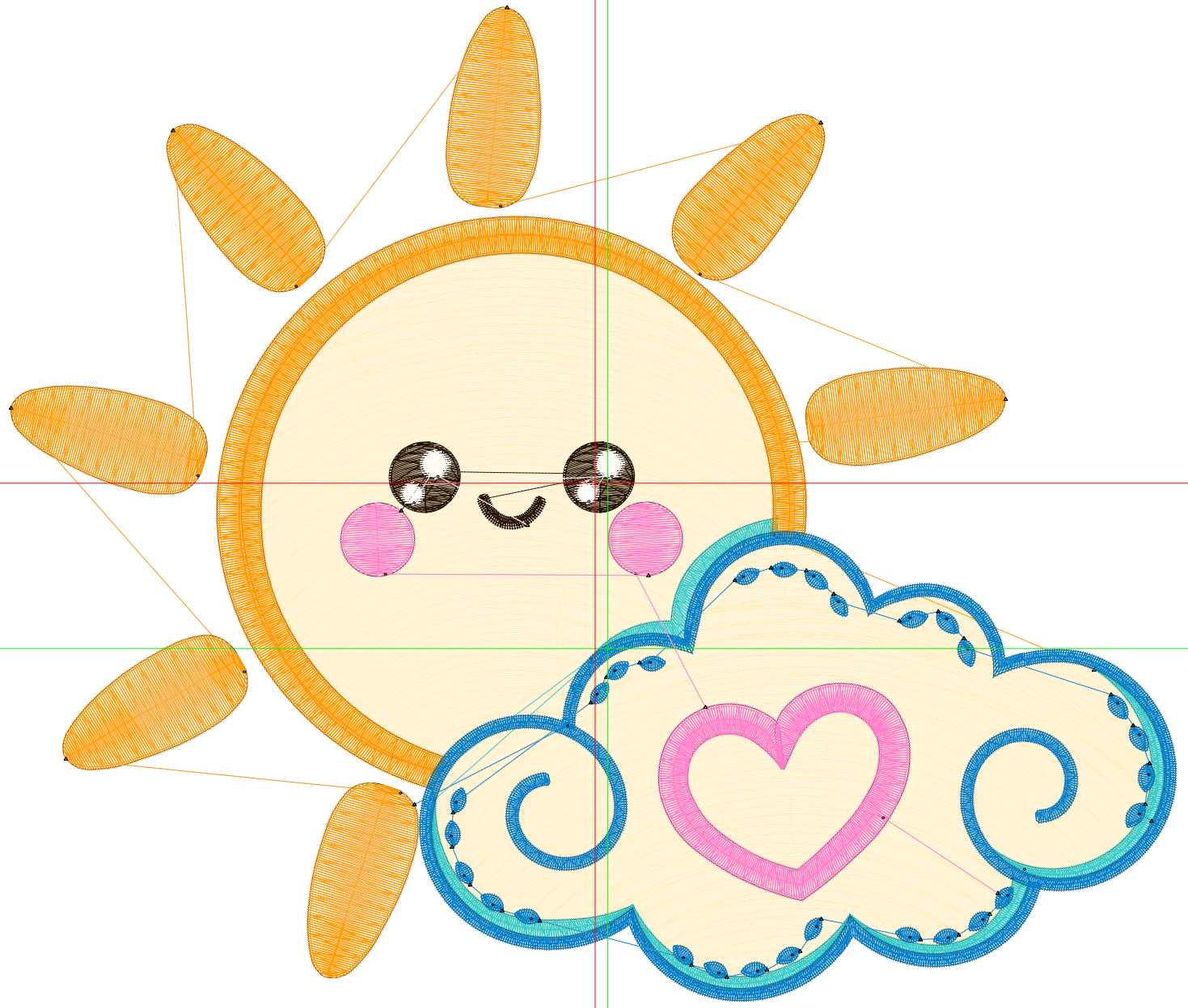
Wilcom EmbroideryStudio - Designing



Design: **7**

Title:

Stitches: 39,381  
Height: 6.41 in  
Width: 7.51 in  
Colors: 7  
Colorway: Colorway 1  
Zoom: 1:1



# Production Worksheet

Wilcom EmbroideryStudio - Designing



Design: **7**

Title:

Stitches: 39,381  
 Height: 6.41 in  
 Width: 7.51 in  
 Colors: 7  
 Colorway: Colorway 1  
 Zoom: 1:1

Machine format: Tajima  
 Color changes: 6  
 Stops: 7  
 Trims: 49  
 Appliqués: 0  
 Left: 97.6 mm  
 Right: 93.1 mm  
 Up: 105.0 mm  
 Down: 57.8 mm  
 EndX: -0.08 in  
 EndY: 1.06 in  
 Area 48.10 in<sup>2</sup>  
 Max stitch: 12.1 mm  
 Min stitch: 0.0 mm  
 Max jump: 7.0 mm  
 Total thread: 763.07ft  
 Total bobbin: 297.70ft

Stop Sequence:

#	N#	Color	St.	Code	Name	Chart
1.	3		25,398		R255 G239 B194	
2.	5		1,740	5	Aqua	Default
3.	4		4,843		R255 G153 B1	
4.	1		4,926		R1 G126 B204	
5.	15		1,220	15	Pink	Default
6.	2		1,019		R36 G17 B1	
7.	9		233	9	White	Default