

# Production Worksheet

Wilcom EmbroideryStudio - Designing



Design: **3**

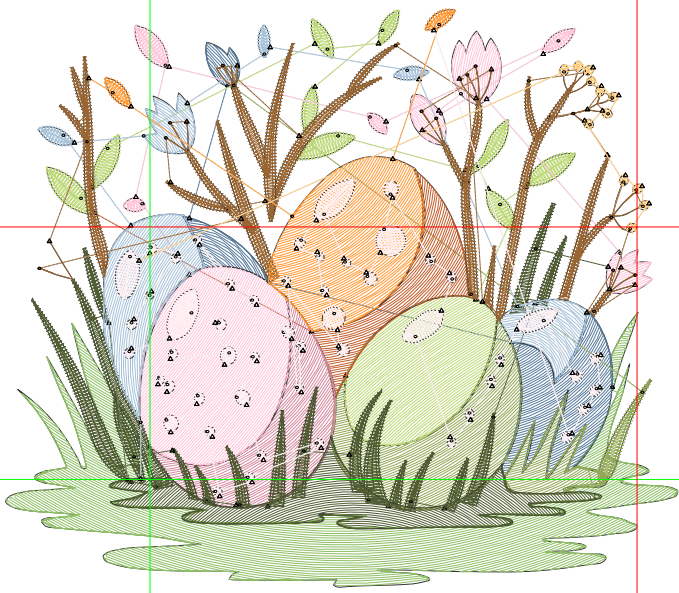
Title:

Stitches: 13,079  
 Height: 3.00 in  
 Width: 3.49 in  
 Colors: 13  
 Colorway: Colorway 1  
 Zoom: 1:1

Machine format: Tajima  
 Color changes: 12  
 Stops: 13  
 Trims: 126  
 Appliqués: 0  
 Left: 19.0 mm  
 Right: 69.8 mm  
 Up: 62.3 mm  
 Down: 14.0 mm  
 EndX: 2.54 in  
 EndY: 1.32 in  
 Area: 10.50 in<sup>2</sup>  
 Max stitch: 9.5 mm  
 Min stitch: 0.0 mm  
 Max jump: 6.9 mm  
 Total thread: 182.96ft  
 Total bobbin: 55.04ft

Stop Sequence:

#	N#	Color	St.	Code	Name	Chart
1.	1		1,546		R142 G191 B101	
2.	3		663		R89 G123 B156	
3.	2		820		R147 G168 B87	
4.	4		937		R189 G217 B119	
5.	5		340		R196 G93 B42	
6.	7		389		R214 G137 B158	
7.	8		1,005		R255 G197 B219	
8.	6		2,188		R80 G92 B50	
9.	9		729		R167 G194 B217	
10.	14		2,013	14	Brown	Default
11.	12		619	12	Orange	Default
12.	10		1,540		R255 G241 B243	
13.	16		288	16	Sand	Default



# Production Worksheet

Wilcom EmbroideryStudio - Designing



Design: **4**

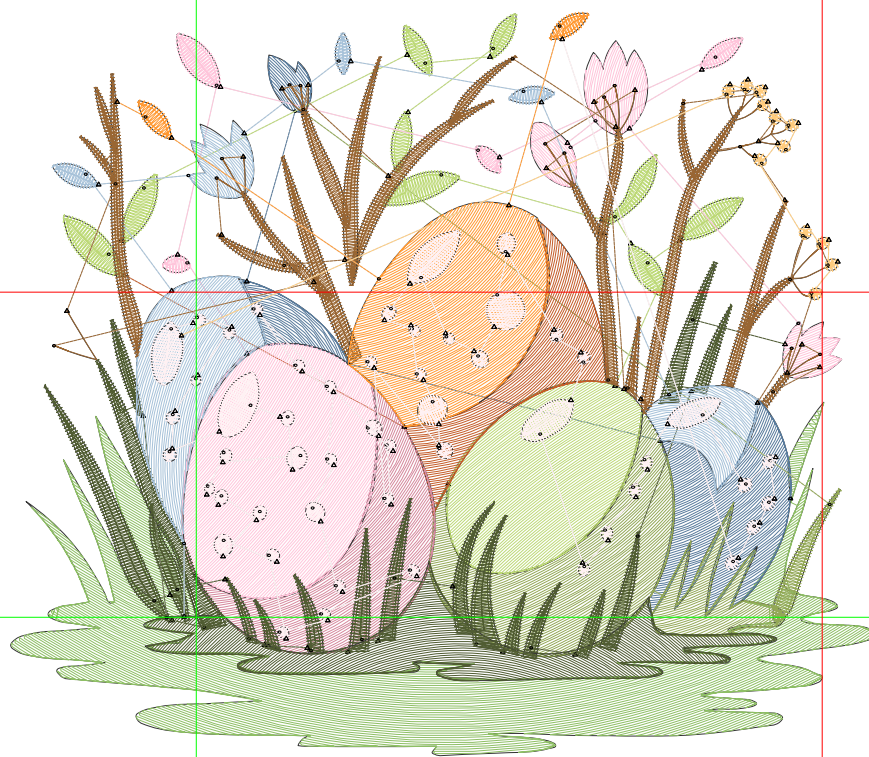
Title:

Stitches: 17,736  
 Height: 3.86 in  
 Width: 4.49 in  
 Colors: 13  
 Colorway: Colorway 1  
 Zoom: 1:1

Machine format: Tajima  
 Color changes: 12  
 Stops: 13  
 Trims: 135  
 Appliqués: 0  
 Left: 24.4 mm  
 Right: 89.7 mm  
 Up: 80.1 mm  
 Down: 18.0 mm  
 EndX: 3.26 in  
 EndY: 1.69 in  
 Area: 17.35 in<sup>2</sup>  
 Max stitch: 9.7 mm  
 Min stitch: 0.0 mm  
 Max jump: 7.0 mm  
 Total thread: 265.36ft  
 Total bobbin: 85.76ft

Stop Sequence:

#	N#	Color	St.	Code	Name	Chart
1.	1		2,273		R142 G191 B101	
2.	3		929		R89 G123 B156	
3.	2		1,195		R147 G168 B87	
4.	4		1,275		R189 G217 B119	
5.	5		515		R196 G93 B42	
6.	7		578		R214 G137 B158	
7.	8		1,454		R255 G197 B219	
8.	6		2,910		R80 G92 B50	
9.	9		1,047		R167 G194 B217	
10.	14		2,512	14	Brown	Default
11.	12		942	12	Orange	Default
12.	10		1,785		R255 G241 B243	
13.	16		319	16	Sand	Default



# Production Worksheet

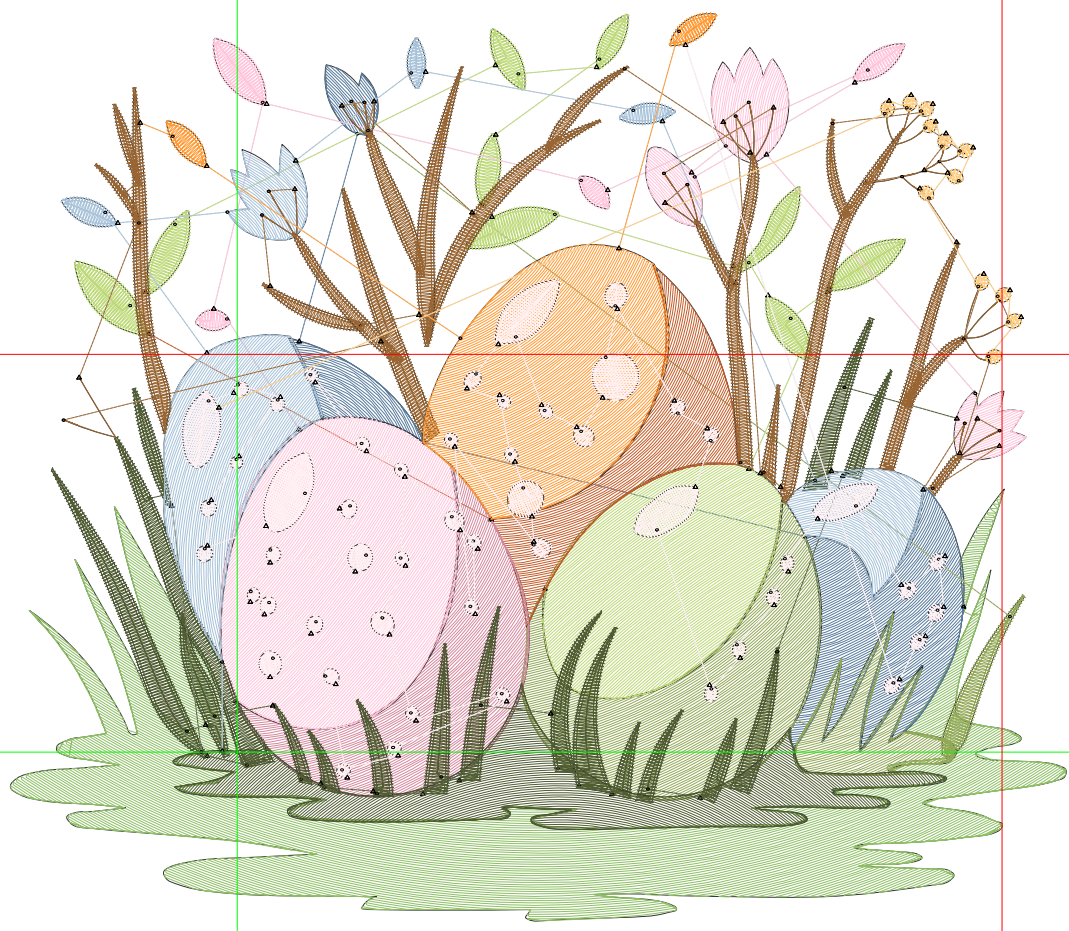
Wilcom EmbroideryStudio - Designing



Design: **5**

Title:

Stitches: 23,037  
Height: 4.73 in  
Width: 5.50 in  
Colors: 13  
Colorway: Colorway 1  
Zoom: 1:1



# Production Worksheet

Wilcom EmbroideryStudio - Designing



Design: **5**

Title:

Stitches: 23,037  
 Height: 4.73 in  
 Width: 5.50 in  
 Colors: 13  
 Colorway: Colorway 1  
 Zoom: 1:1

Machine format: Tajima  
 Color changes: 12  
 Stops: 13  
 Trims: 139  
 Appliqués: 0  
 Left: 30.0 mm  
 Right: 109.7 mm  
 Up: 97.8 mm  
 Down: 22.3 mm  
 EndX: 3.98 in  
 EndY: 2.07 in  
 Area 26.00 in<sup>2</sup>  
 Max stitch: 11.8 mm  
 Min stitch: 0.0 mm  
 Max jump: 7.0 mm  
 Total thread: 364.08ft  
 Total bobbin: 123.65ft

Stop Sequence:

#	N#	Color	St.	Code	Name	Chart
1.	1		3,118		R142 G191 B101	
2.	3		1,262		R89 G123 B156	
3.	2		1,623		R147 G168 B87	
4.	4		1,650		R189 G217 B119	
5.	5		703		R196 G93 B42	
6.	7		819		R214 G137 B158	
7.	8		1,973		R255 G197 B219	
8.	6		3,651		R80 G92 B50	
9.	9		1,407		R167 G194 B217	
10.	14		3,027	14	Brown	Default
11.	12		1,311	12	Orange	Default
12.	10		2,111		R255 G241 B243	
13.	16		380	16	Sand	Default

# Production Worksheet

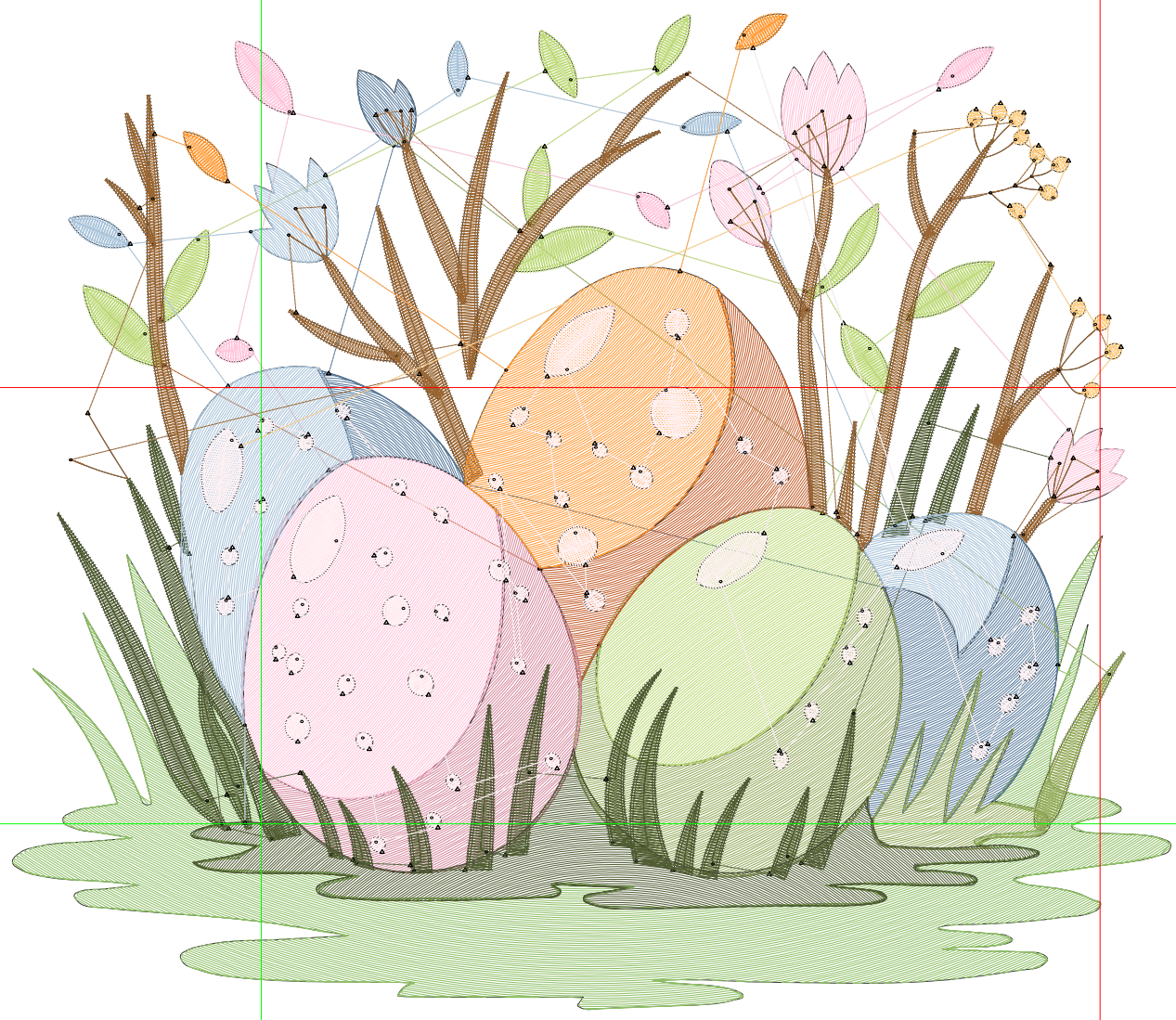
Wilcom EmbroideryStudio - Designing



Design: **6**

Title:

Stitches: 28,875  
Height: 5.59 in  
Width: 6.50 in  
Colors: 13  
Colorway: Colorway 1  
Zoom: 1:1



# Production Worksheet

Wilcom EmbroideryStudio - Designing



Design: **6**

Title:

Stitches: 28,875  
 Height: 5.59 in  
 Width: 6.50 in  
 Colors: 13  
 Colorway: Colorway 1  
 Zoom: 1:1

Machine format: Tajima  
 Color changes: 12  
 Stops: 13  
 Trims: 142  
 Appliqués: 0  
 Left: 35.4 mm  
 Right: 129.6 mm  
 Up: 115.6 mm  
 Down: 26.4 mm  
 EndX: 4.71 in  
 EndY: 2.45 in  
 Area 36.30 in<sup>2</sup>  
 Max stitch: 10.4 mm  
 Min stitch: 0.0 mm  
 Max jump: 7.0 mm  
 Total thread: 478.14ft  
 Total bobbin: 168.53ft

Stop Sequence:

#	N#	Color	St.	Code	Name	Chart
1.	1		4,085		R142 G191 B101	
2.	3		1,631		R89 G123 B156	
3.	2		2,101		R147 G168 B87	
4.	4		2,077		R189 G217 B119	
5.	5		907		R196 G93 B42	
6.	7		1,090		R214 G137 B158	
7.	8		2,595		R255 G197 B219	
8.	6		4,497		R80 G92 B50	
9.	9		1,841		R167 G194 B217	
10.	14		3,540	14	Brown	Default
11.	12		1,755	12	Orange	Default
12.	10		2,347		R255 G241 B243	
13.	16		407	16	Sand	Default

# Production Worksheet

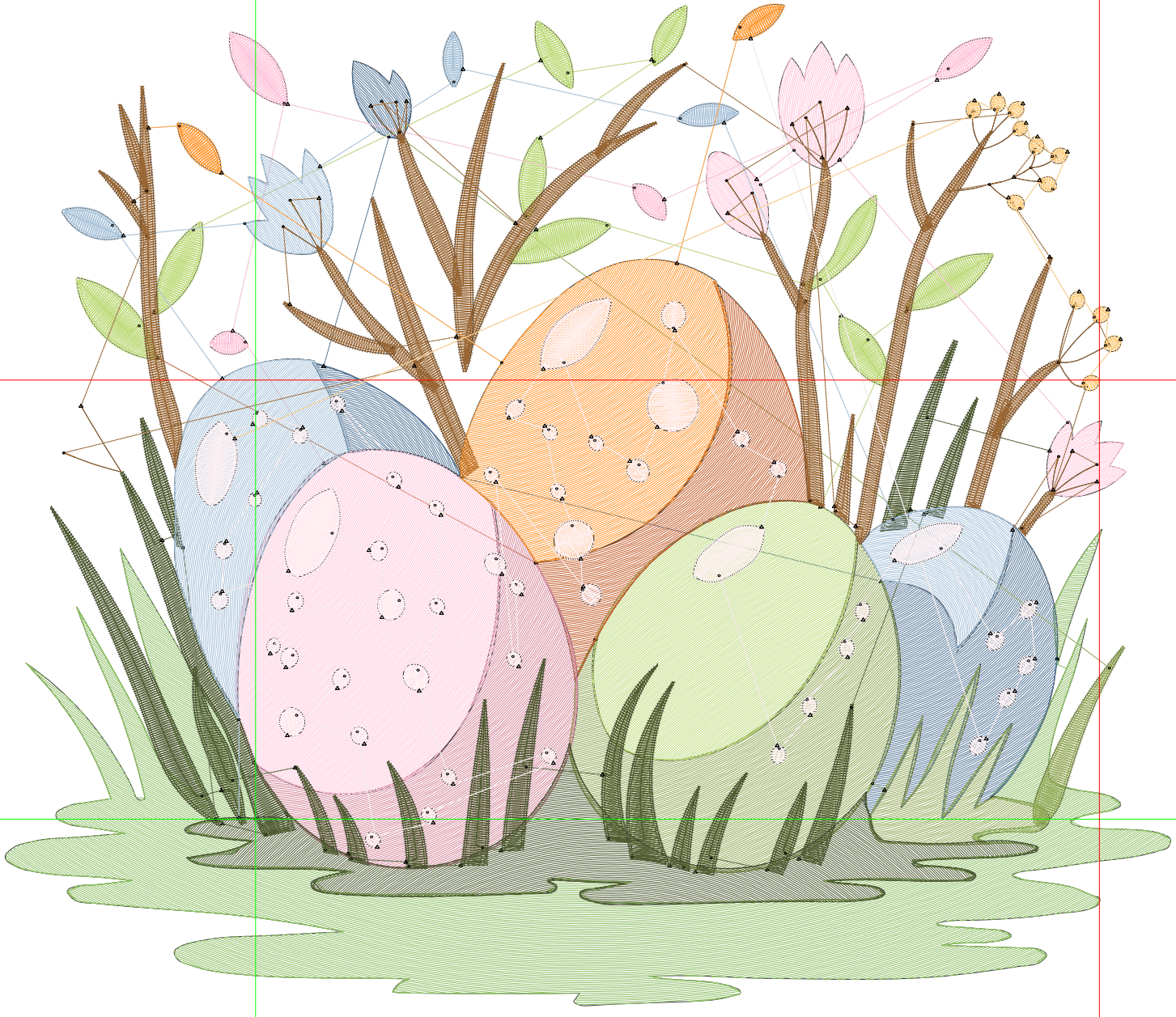
Wilcom EmbroideryStudio - Designing



Design: **7**

Title:

Stitches: 35,297  
Height: 6.44 in  
Width: 7.49 in  
Colors: 13  
Colorway: Colorway 1  
Zoom: 1:1



# Production Worksheet

Wilcom EmbroideryStudio - Designing



Design: **7**

Title:

Stitches: 35,297  
 Height: 6.44 in  
 Width: 7.49 in  
 Colors: 13  
 Colorway: Colorway 1  
 Zoom: 1:1

Machine format: Tajima  
 Color changes: 12  
 Stops: 13  
 Trims: 144  
 Appliqués: 0  
 Left: 40.8 mm  
 Right: 149.5 mm  
 Up: 133.3 mm  
 Down: 30.3 mm  
 EndX: 5.43 in  
 EndY: 2.83 in  
 Area 48.28 in<sup>2</sup>  
 Max stitch: 12.0 mm  
 Min stitch: 0.0 mm  
 Max jump: 6.9 mm  
 Total thread: 607.82ft  
 Total bobbin: 220.41ft

Stop Sequence:

#	N#	Color	St.	Code	Name	Chart
1.	1		5,078		R142 G191 B101	
2.	3		2,075		R89 G123 B156	
3.	2		2,603		R147 G168 B87	
4.	4		2,541		R189 G217 B119	
5.	5		1,148		R196 G93 B42	
6.	7		1,453		R214 G137 B158	
7.	8		3,279		R255 G197 B219	
8.	6		5,407		R80 G92 B50	
9.	9		2,325		R167 G194 B217	
10.	14		4,069	14	Brown	Default
11.	12		2,261	12	Orange	Default
12.	10		2,598		R255 G241 B243	
13.	16		458	16	Sand	Default