

# Production Worksheet

Wilcom EmbroideryStudio - Designing



Design: **3**

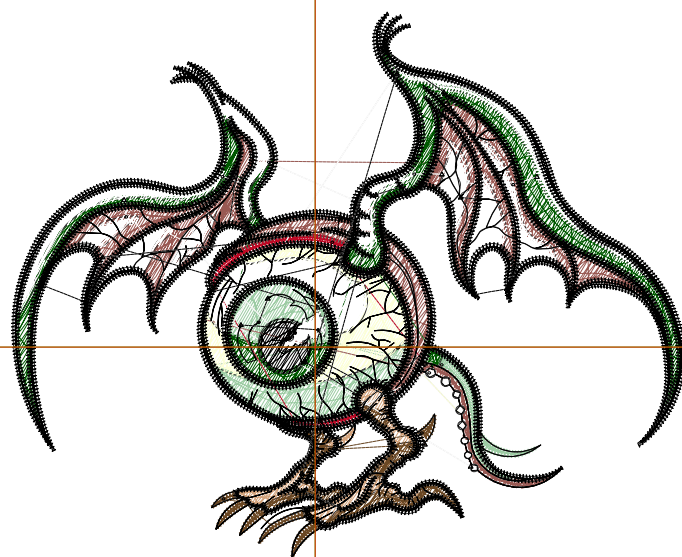
Title:

Stitches: 15,600  
Height: 2.84 in  
Width: 3.51 in  
Colors: 9  
Colorway: Colorway 1  
Zoom: 1:1

Machine format: Tajima  
Color changes: 8  
Stops: 9  
Trims: 54  
Appliqués: 0  
Left: 40.2 mm  
Right: 49.1 mm  
Up: 44.3 mm  
Down: 27.9 mm  
EndX: 0.00 in  
EndY: 0.00 in  
Area 9.98 in<sup>2</sup>  
Max stitch: 11.5 mm  
Min stitch: 0.0 mm  
Max jump: 7.0 mm  
Total thread: 200.98ft  
Total bobbin: 56.69ft

Stop Sequence:

#	N#	Color	St.	Code	Name	Chart
1.	7		725		R157 G204 B164	
2.	2		456		R252 G255 B216	
3.	11		1,776		R153 G89 B83	
4.	1		1,418		R0 G89 B0	
5.	3		190		R191 G8 B36	
6.	12		445		R212 G164 B125	
7.	14		753		R107 G72 B36	
8.	9		1,930		R255 G255 B255	
9.	8		7,905		R0 G0 B0	



# Production Worksheet

Wilcom EmbroideryStudio - Designing



Design: **4**

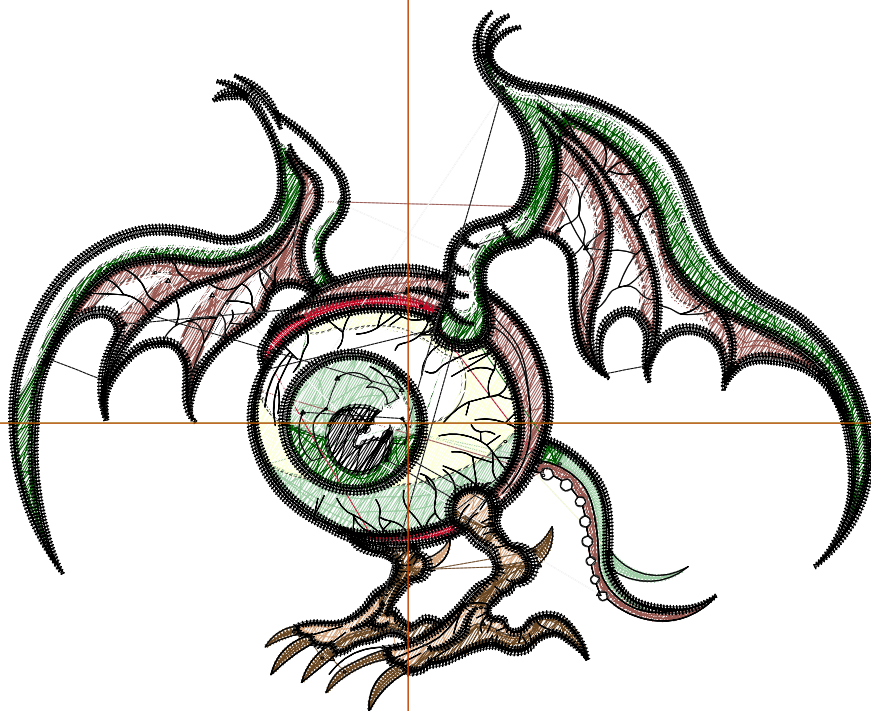
Title:

Stitches: 19,953  
Height: 3.65 in  
Width: 4.51 in  
Colors: 9  
Colorway: Colorway 1  
Zoom: 1:1

Machine format: Tajima  
Color changes: 8  
Stops: 9  
Trims: 61  
Appliqués: 0  
Left: 52.8 mm  
Right: 61.8 mm  
Up: 54.6 mm  
Down: 38.2 mm  
EndX: 0.00 in  
EndY: 0.00 in  
Area 16.48 in<sup>2</sup>  
Max stitch: 12.0 mm  
Min stitch: 0.0 mm  
Max jump: 6.9 mm  
Total thread: 274.11ft  
Total bobbin: 83.10ft

### Stop Sequence:

#	N#	Color	St.	Code	Name	Chart
1.	7		950		R157 G204 B164	
2.	2		588		R252 G255 B216	
3.	11		2,341		R153 G89 B83	
4.	1		1,806		R0 G89 B0	
5.	3		243		R191 G8 B36	
6.	12		590		R212 G164 B125	
7.	14		962		R107 G72 B36	
8.	9		2,570		R255 G255 B255	
9.	8		9,901		R0 G0 B0	



# Production Worksheet

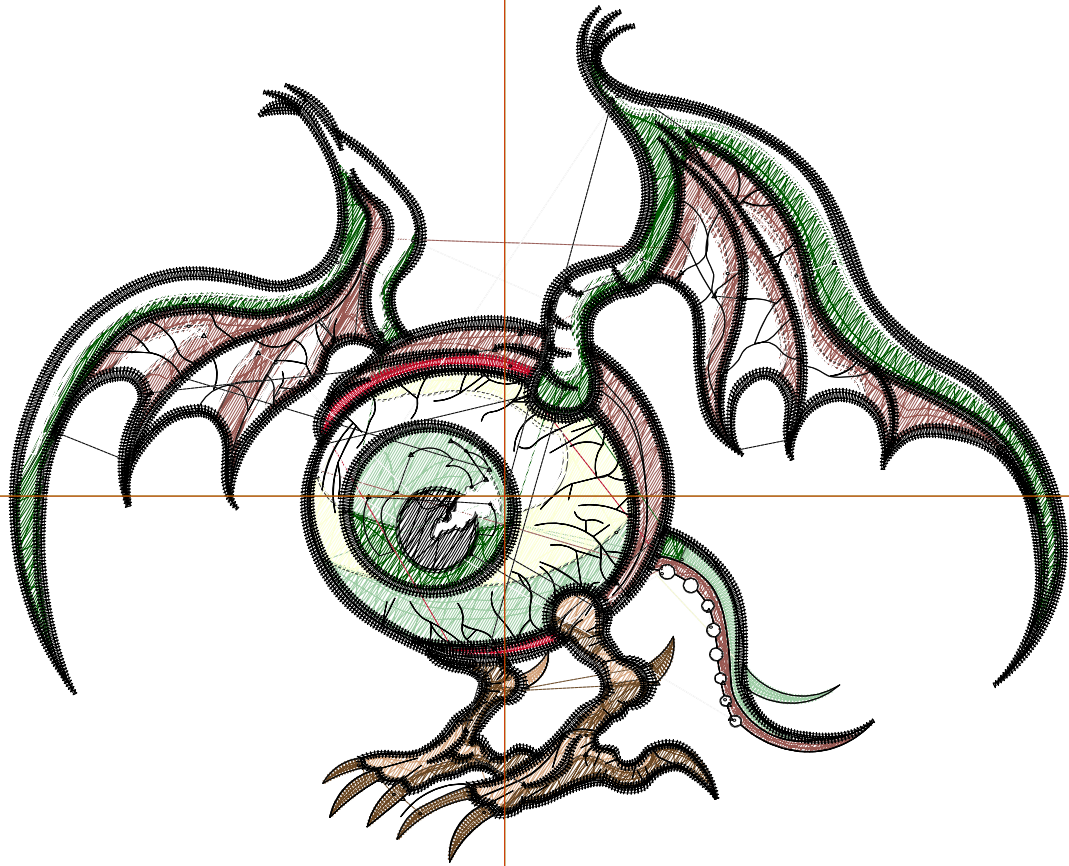
Wilcom EmbroideryStudio - Designing



Design: **5**

Title:

Stitches: 24,427  
Height: 4.46 in  
Width: 5.51 in  
Colors: 9  
Colorway: Colorway 1  
Zoom: 1:1



# Production Worksheet

Wilcom EmbroideryStudio - Designing



Design: **5**

Title:

Stitches: 24,427  
 Height: 4.46 in  
 Width: 5.51 in  
 Colors: 9  
 Colorway: Colorway 1  
 Zoom: 1:1

Machine format: Tajima  
 Color changes: 8  
 Stops: 9  
 Trims: 71  
 Appliqués: 0  
 Left: 65.6 mm  
 Right: 74.5 mm  
 Up: 64.9 mm  
 Down: 48.5 mm  
 EndX: 0.00 in  
 EndY: 0.00 in  
 Area 24.61 in<sup>2</sup>  
 Max stitch: 6.9 mm  
 Min stitch: 0.0 mm  
 Max jump: 6.9 mm  
 Total thread: 355.41ft  
 Total bobbin: 113.88ft

Stop Sequence:

#	N#	Color	St.	Code	Name	Chart
1.	7		1,207		R157 G204 B164	
2.	2		753		R252 G255 B216	
3.	11		2,928		R153 G89 B83	
4.	1		2,278		R0 G89 B0	
5.	3		295		R191 G8 B36	
6.	12		716		R212 G164 B125	
7.	14		1,154		R107 G72 B36	
8.	9		3,209		R255 G255 B255	
9.	8		11,885		R0 G0 B0	

# Production Worksheet

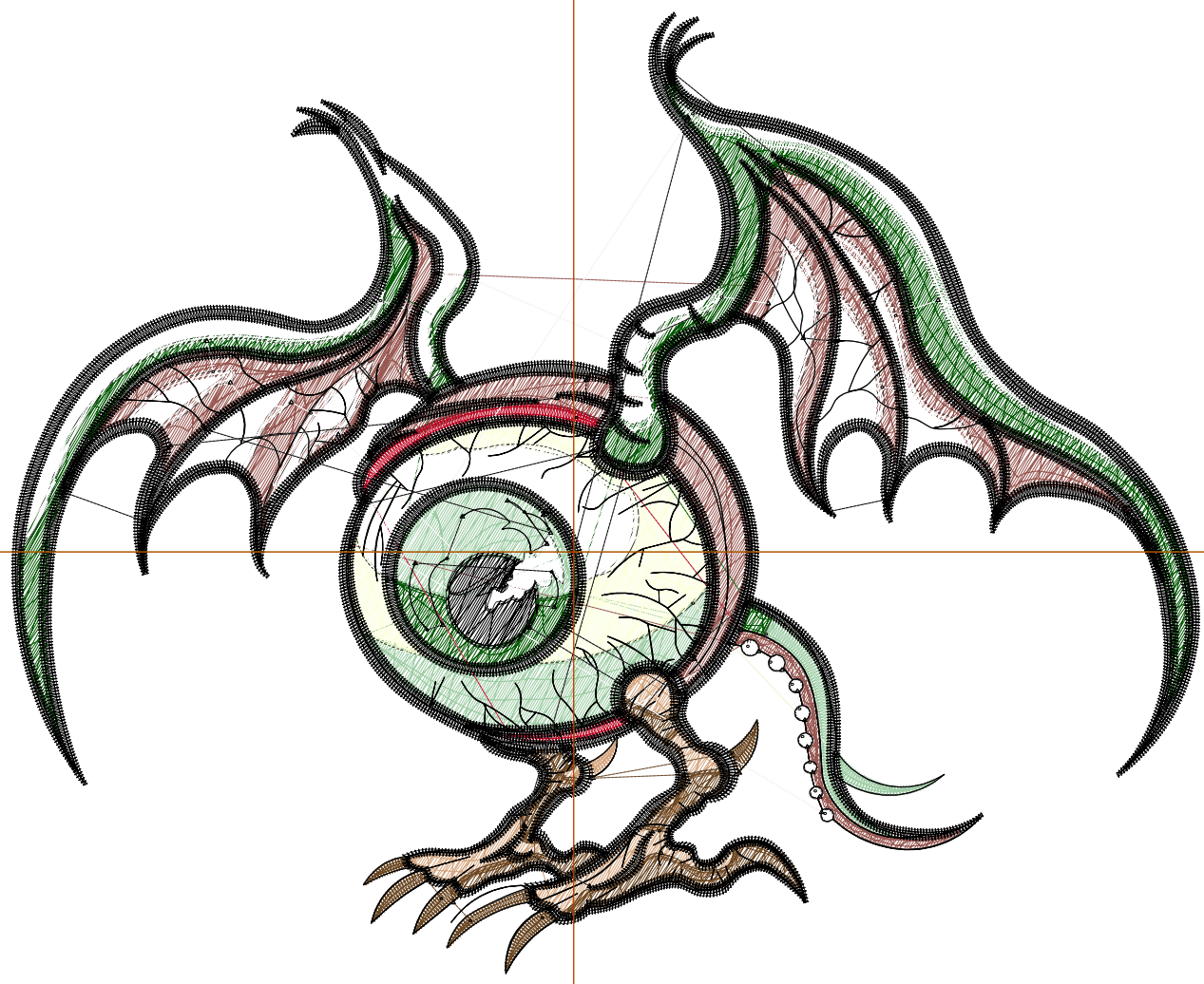
Wilcom EmbroideryStudio - Designing



Design: **6**

Title:

Stitches: 29,328  
Height: 5.27 in  
Width: 6.51 in  
Colors: 9  
Colorway: Colorway 1  
Zoom: 1:1



# Production Worksheet

Wilcom EmbroideryStudio - Designing



Design: **6**

Title:

Stitches: 29,328  
 Height: 5.27 in  
 Width: 6.51 in  
 Colors: 9  
 Colorway: Colorway 1  
 Zoom: 1:1

Machine format: Tajima  
 Color changes: 8  
 Stops: 9  
 Trims: 79  
 Appliqués: 0  
 Left: 78.3 mm  
 Right: 87.2 mm  
 Up: 75.2 mm  
 Down: 58.8 mm  
 EndX: 0.00 in  
 EndY: 0.00 in  
 Area 34.35 in<sup>2</sup>  
 Max stitch: 9.7 mm  
 Min stitch: 0.0 mm  
 Max jump: 6.9 mm  
 Total thread: 449.23ft  
 Total bobbin: 150.42ft

Stop Sequence:

#	N#	Color	St.	Code	Name	Chart
1.	7		1,487		R157 G204 B164	
2.	2		968		R252 G255 B216	
3.	11		3,635		R153 G89 B83	
4.	1		2,773		R0 G89 B0	
5.	3		342		R191 G8 B36	
6.	12		858		R212 G164 B125	
7.	14		1,372		R107 G72 B36	
8.	9		3,956		R255 G255 B255	
9.	8		13,935		R0 G0 B0	

# Production Worksheet

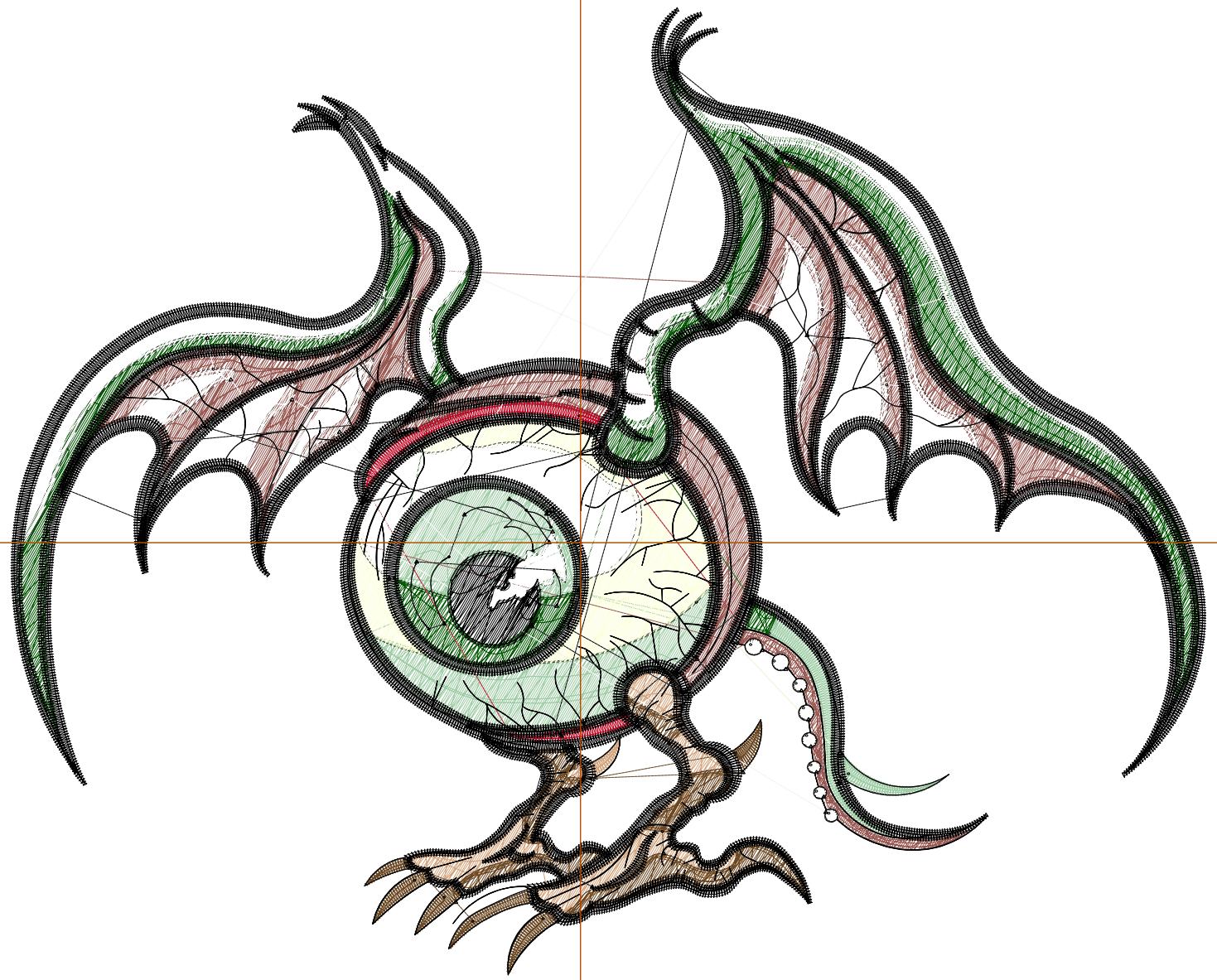
Wilcom EmbroideryStudio - Designing



Design: **7**

Title:

Stitches: 34,503  
Height: 6.08 in  
Width: 7.51 in  
Colors: 9  
Colorway: Colorway 1  
Zoom: 1:1



# Production Worksheet

Wilcom EmbroideryStudio - Designing



Design: **7**

Title:

Stitches: 34,503  
 Height: 6.08 in  
 Width: 7.51 in  
 Colors: 9  
 Colorway: Colorway 1  
 Zoom: 1:1

Machine format: Tajima  
 Color changes: 8  
 Stops: 9  
 Trims: 84  
 Appliqués: 0  
 Left: 91.0 mm  
 Right: 99.9 mm  
 Up: 85.5 mm  
 Down: 69.0 mm  
 EndX: 0.00 in  
 EndY: 0.00 in  
 Area 45.71 in<sup>2</sup>  
 Max stitch: 9.6 mm  
 Min stitch: 0.0 mm  
 Max jump: 6.9 mm  
 Total thread: 551.76ft  
 Total bobbin: 191.06ft

Stop Sequence:

#	N#	Color	St.	Code	Name	Chart
1.	7		1,830		R157 G204 B164	
2.	2		1,194		R252 G255 B216	
3.	11		4,379		R153 G89 B83	
4.	1		3,336		R0 G89 B0	
5.	3		397		R191 G8 B36	
6.	12		1,012		R212 G164 B125	
7.	14		1,604		R107 G72 B36	
8.	9		4,702		R255 G255 B255	
9.	8		16,047		R0 G0 B0	