

Production Worksheet

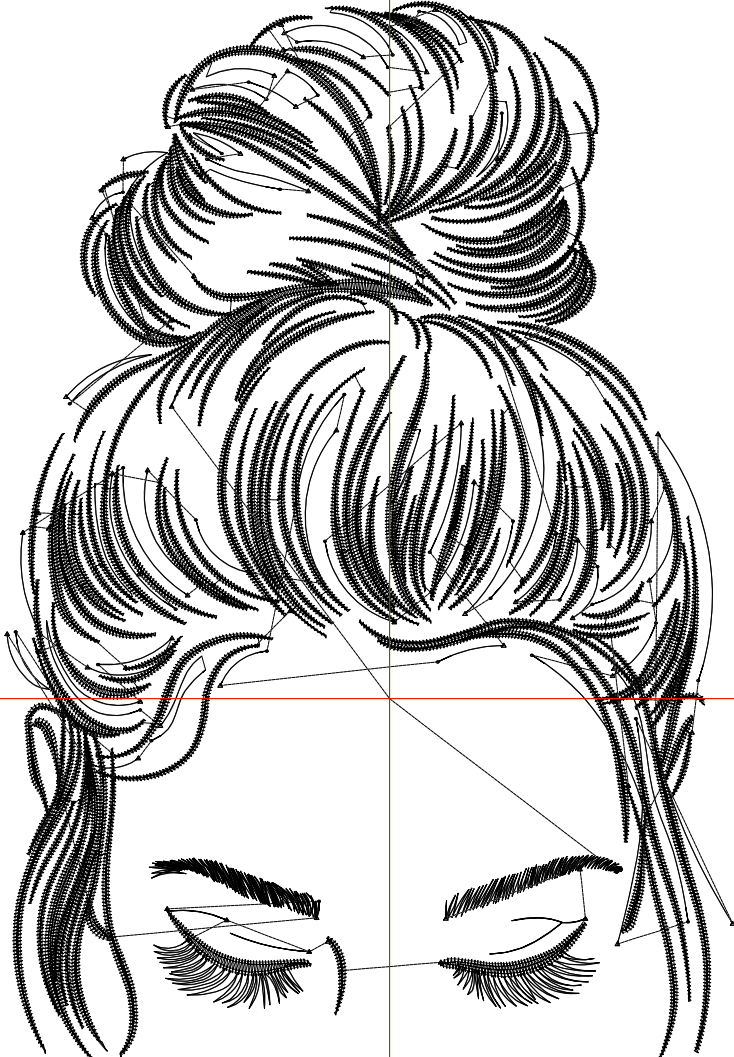
Wilcom EmbroideryStudio - Designing



Design: **5**

Title:

Stitches: 24,034
 Height: 5.51 in
 Width: 3.78 in
 Colors: 1
 Colorway: Colorway 1
 Zoom: 1:1



Machine format: Tajima
 Color changes: 0
 Stops: 1
 Trims: 94
 Appliqués: 0
 Left: 50.6 mm
 Right: 45.4 mm
 Up: 92.3 mm
 Down: 47.7 mm
 EndX: 0.00 in
 EndY: 0.00 in
 Area: 20.82 in²
 Max stitch: 6.9 mm
 Min stitch: 0.2 mm
 Max jump: 6.9 mm
 Total thread: 282.56ft
 Total bobbin: 73.80ft

Stop Sequence:

#	N#	Color	St.	Code	Name	Chart
1.	8		24,032	8	Black	Default

Production Worksheet

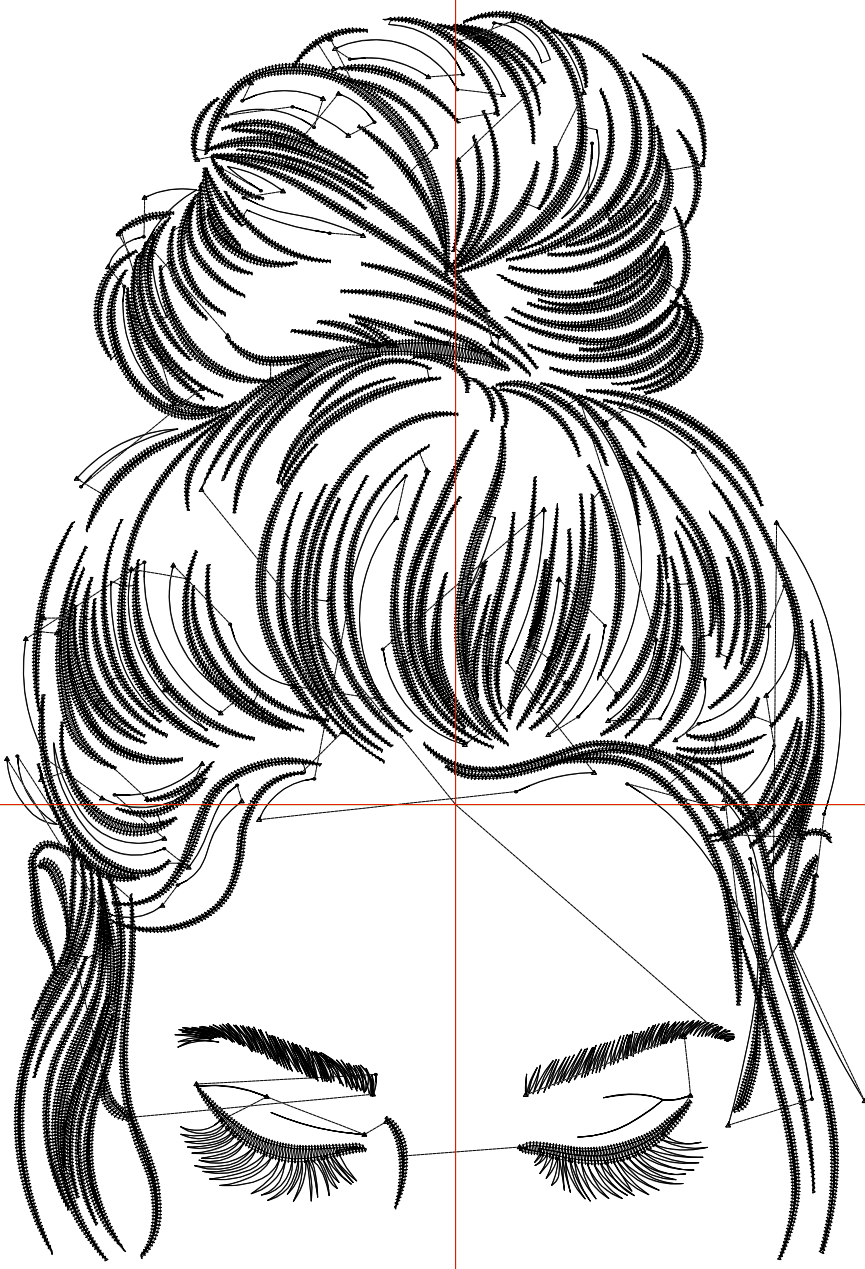
Wilcom EmbroideryStudio - Designing



Design: **6**

Title:

Stitches: 28,019
 Height: 6.51 in
 Width: 4.47 in
 Colors: 1
 Colorway: Colorway 1
 Zoom: 1:1



Machine format: Tajima
 Color changes: 0
 Stops: 1
 Trims: 99
 Appliqués: 0
 Left: 59.3 mm
 Right: 54.1 mm
 Up: 105.0 mm
 Down: 60.3 mm
 EndX: 0.00 in
 EndY: 0.00 in
 Area: 29.07 in²
 Max stitch: 6.8 mm
 Min stitch: 0.2 mm
 Max jump: 6.9 mm
 Total thread: 340.26ft
 Total bobbin: 92.49ft

Stop Sequence:

#	N#	Color	St.	Code	Name	Chart
1.	8	████	28,017	8	Black	Default

Production Worksheet

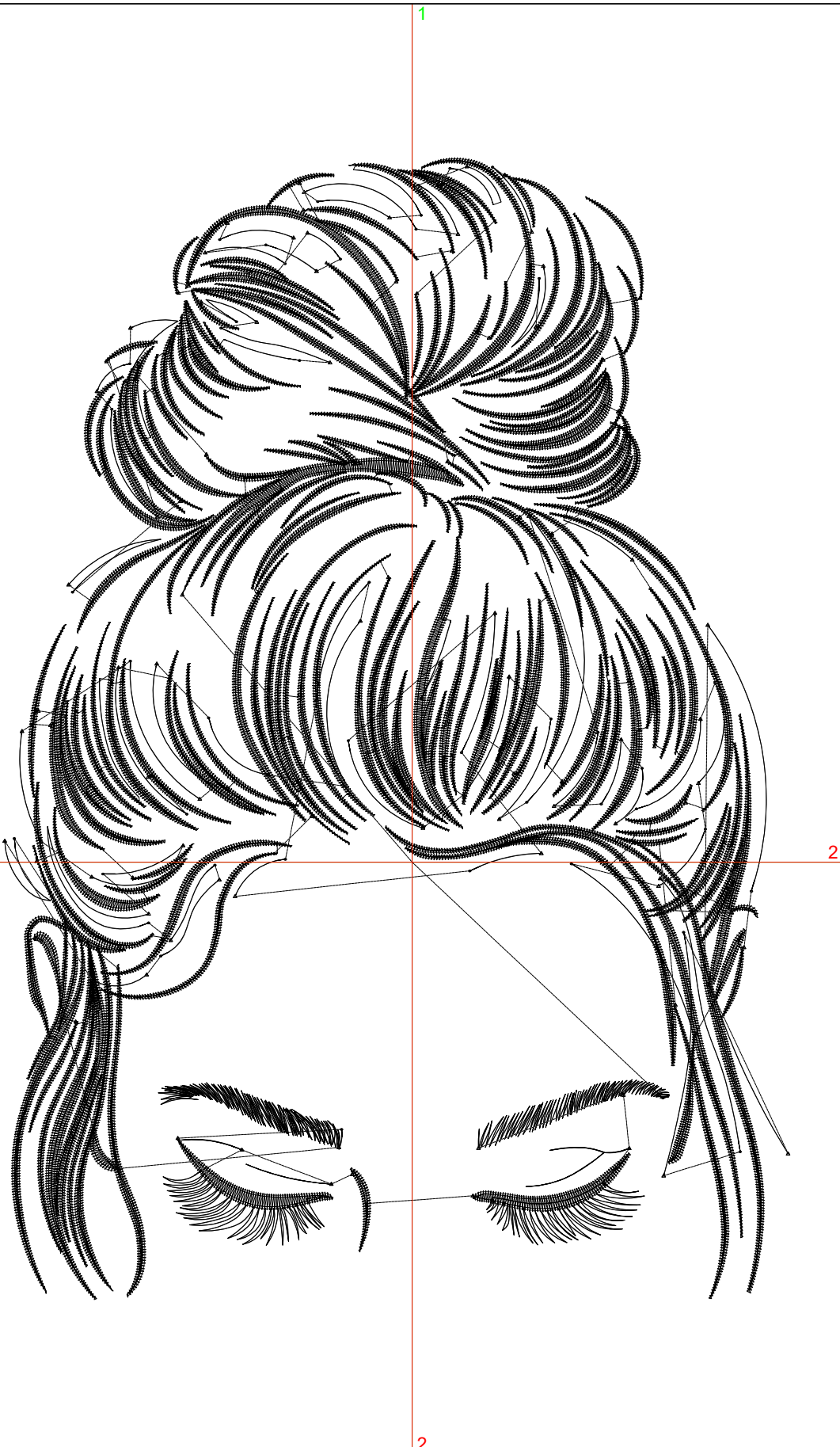
Wilcom EmbroideryStudio - Designing



Design: **7**

Title:

Stitches: 32,089
 Height: 7.51 in
 Width: 5.15 in
 Colors: 1
 Colorway: Colorway 1
 Zoom: 1:1



Machine format: Tajima
 Color changes: 0
 Stops: 1
 Trims: 104
 Appliqués: 0
 Left: 68.1 mm
 Right: 62.8 mm
 Up: 117.7 mm
 Down: 73.0 mm
 EndX: 0.00 in
 EndY: 0.00 in
 Area: 38.69 in²
 Max stitch: 7.0 mm
 Min stitch: 0.2 mm
 Max jump: 7.0 mm
 Total thread: 401.59ft
 Total bobbin: 113.01ft

Stop Sequence:

#	N#	Color	St.	Code	Name	Chart
1.	8	████	32,087	8	Black	Default

Production Worksheet

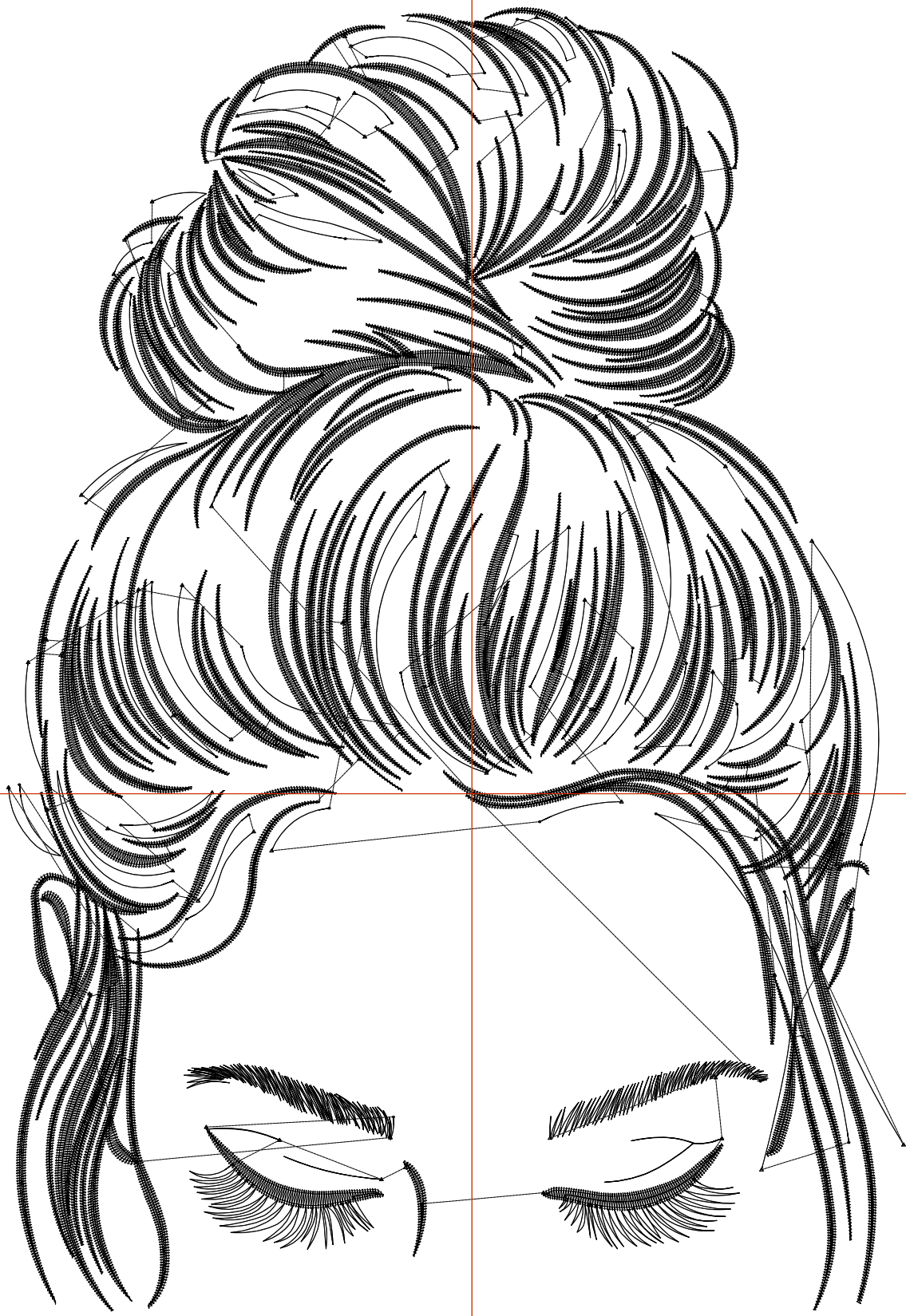
Wilcom EmbroideryStudio - Designing



Design: **8**

Title:

Stitches: 36,144
Height: 8.51 in
Width: 5.84 in
Colors: 1
Colorway: Colorway 1
Zoom: 1:1



Production Worksheet

Wilcom EmbroideryStudio - Designing



Design: **8**

Title:

Stitches: 36,144
Height: 8.51 in
Width: 5.84 in
Colors: 1
Colorway: Colorway 1
Zoom: 1:1

Machine format: Tajima
Color changes: 0
Stops: 1
Trims: 107
Appliqués: 0
Left: 76.8 mm
Right: 71.5 mm
Up: 130.4 mm
Down: 85.7 mm
EndX: 0.00 in
EndY: 0.00 in
Area 49.69 in²
Max stitch: 7.0 mm
Min stitch: 0.2 mm
Max jump: 7.0 mm
Total thread: 465.80ft
Total bobbin: 135.29ft

Stop Sequence:

#	N#	Color	St.	Code	Name	Chart
1.	8	█	36,142	8	Black	Default