

Production Worksheet

Wilcom EmbroideryStudio - Designing



Design: **3**

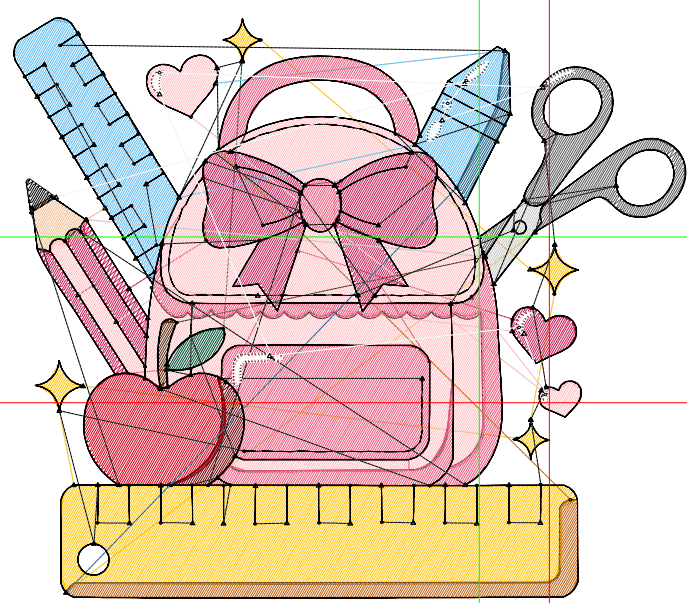
Title:

Stitches: 14,954
 Height: 3.02 in
 Width: 3.50 in
 Colors: 16
 Colorway: Colorway 1
 Zoom: 1:1

Machine format: Tajima
 Color changes: 15
 Stops: 16
 Trims: 122
 Appliqués: 0
 Left: 61.5 mm
 Right: 27.3 mm
 Up: 29.0 mm
 Down: 47.8 mm
 EndX: 0.37 in
 EndY: -0.86 in
 Area 10.57 in²
 Max stitch: 7.0 mm
 Min stitch: 0.0 mm
 Max jump: 7.0 mm
 Total thread: 211.20ft
 Total bobbin: 63.90ft

Stop Sequence:

#	N#	Color	St.	Code	Name	Chart
1.	1	Black	508		R91 G92 B92	
2.	2	Yellow	1,657		R255 G197 B8	
3.	3	Green	86		R1 G79 B48	
4.	5	Red	1,379		R199 G29 B86	
5.	4	Pink	2,553		R255 G191 B196	
6.	14	Blue	757		R97 G189 B242	
7.	12	Orange	104		R242 G190 B149	
8.	13	Grey	91		R201 G200 B195	
9.	16	Brown	67		R92 G43 B15	
10.	15	Red	386		R214 G1 B26	
11.	17	Dark Red	137		R117 G0 B10	
12.	6	Pink	1,920		R235 G87 B124	
13.	7	Brown	641		R189 G98 B19	
14.	10	Blue	103		R24 G96 B135	
15.	8	Black	4,218	8	Black	Default
16.	9	White	345	9	White	Default



Production Worksheet

Wilcom EmbroideryStudio - Designing



Design: **4**

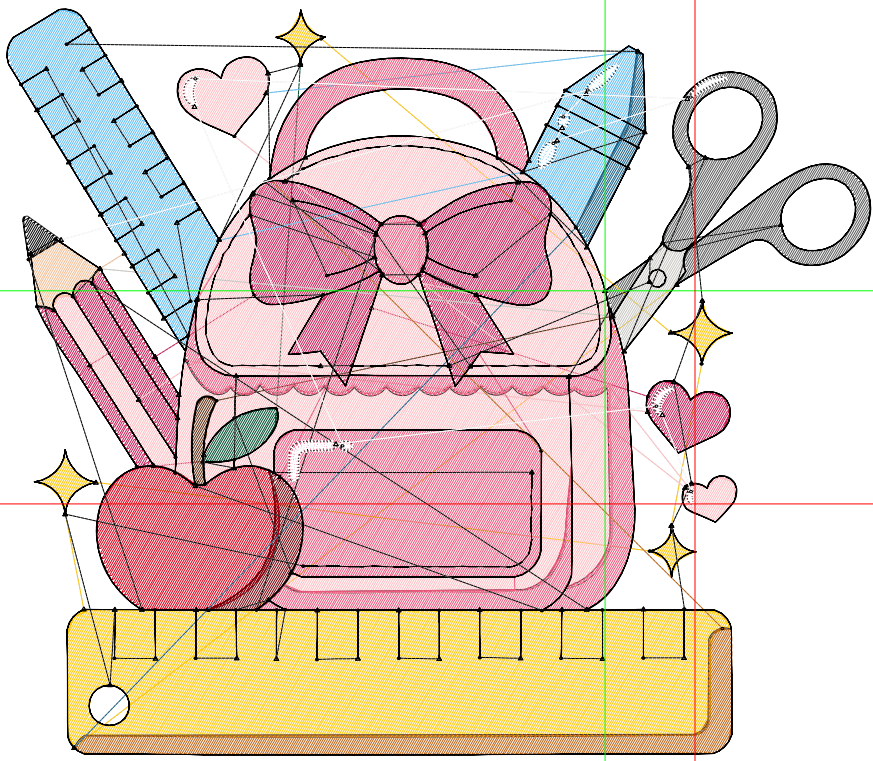
Title:

Stitches: 20,267
 Height: 3.88 in
 Width: 4.50 in
 Colors: 16
 Colorway: Colorway 1
 Zoom: 1:1

Machine format: Tajima
 Color changes: 15
 Stops: 16
 Trims: 129
 Appliqués: 0
 Left: 79.1 mm
 Right: 35.1 mm
 Up: 37.3 mm
 Down: 61.4 mm
 EndX: 0.47 in
 EndY: -1.11 in
 Area: 17.47 in²
 Max stitch: 7.0 mm
 Min stitch: 0.0 mm
 Max jump: 7.0 mm
 Total thread: 303.60ft
 Total bobbin: 97.99ft

Stop Sequence:

#	N#	Color	St.	Code	Name	Chart
1.	1	Black	695		R91 G92 B92	
2.	2	Yellow	2,445		R255 G197 B8	
3.	3	Green	118		R1 G79 B48	
4.	5	Red	1,993		R199 G29 B86	
5.	4	Pink	3,575		R255 G191 B196	
6.	14	Blue	1,112		R97 G189 B242	
7.	12	Orange	136		R242 G190 B149	
8.	13	Grey	131		R201 G200 B195	
9.	16	Brown	90		R92 G43 B15	
10.	15	Red	581		R214 G1 B26	
11.	17	Dark Red	195		R117 G0 B10	
12.	6	Pink	2,744		R235 G87 B124	
13.	7	Brown	885		R189 G98 B19	
14.	10	Blue	141		R24 G96 B135	
15.	8	Black	4,997	8	Black	Default
16.	9	White	427	9	White	Default



Production Worksheet

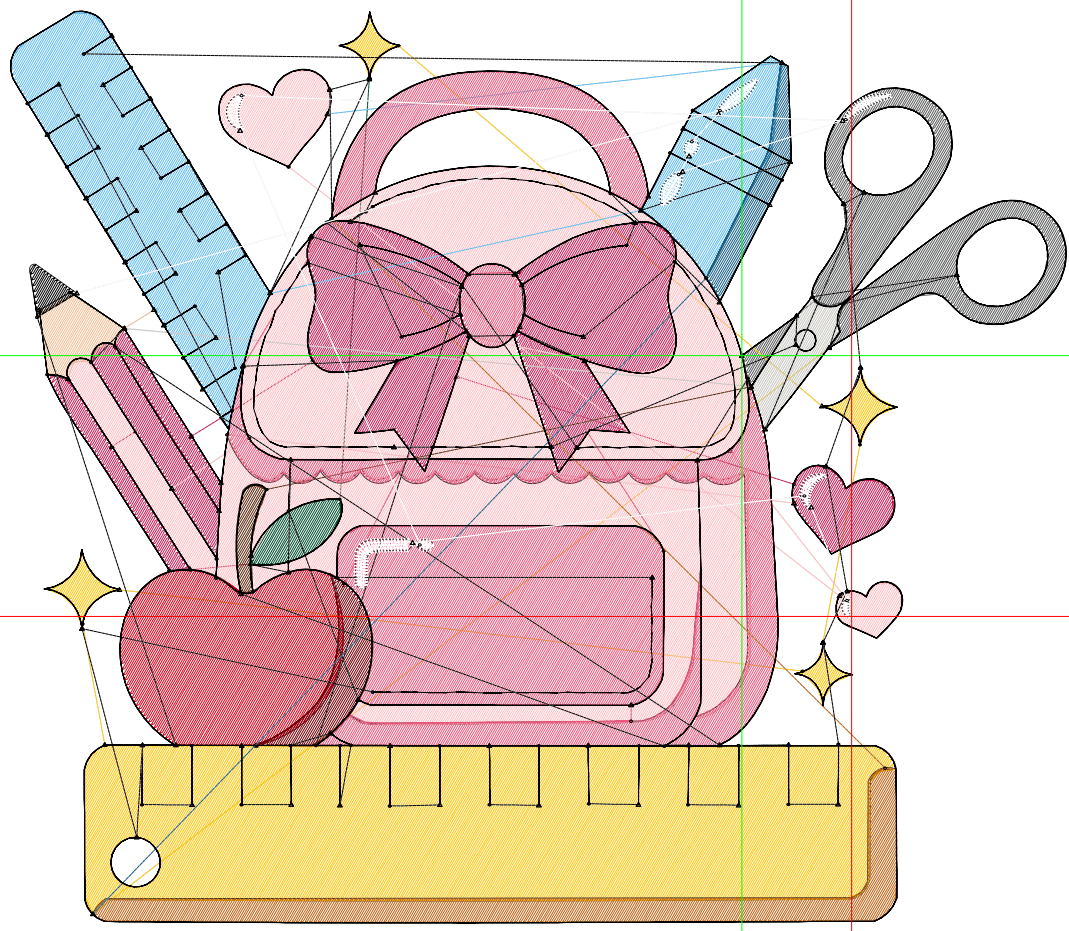
Wilcom EmbroideryStudio - Designing



Design: **5**

Title:

Stitches: 26,280
Height: 4.75 in
Width: 5.50 in
Colors: 16
Colorway: Colorway 1
Zoom: 1:1



Production Worksheet

Wilcom EmbroideryStudio - Designing



Design: **5**

Title:

Stitches: 26,280
 Height: 4.75 in
 Width: 5.50 in
 Colors: 16
 Colorway: Colorway 1
 Zoom: 1:1

Machine format: Tajima
 Color changes: 15
 Stops: 16
 Trims: 130
 Appliqués: 0
 Left: 96.7 mm
 Right: 42.9 mm
 Up: 45.5 mm
 Down: 75.1 mm
 EndX: 0.57 in
 EndY: -1.36 in
 Area 26.10 in²
 Max stitch: 8.0 mm
 Min stitch: 0.0 mm
 Max jump: 7.0 mm
 Total thread: 413.58ft
 Total bobbin: 139.79ft

Stop Sequence:

#	N#	Color	St.	Code	Name	Chart
1.	1		931		R91 G92 B92	
2.	2		3,347		R255 G197 B8	
3.	3		153		R1 G79 B48	
4.	5		2,627		R199 G29 B86	
5.	4		4,841		R255 G191 B196	
6.	14		1,537		R97 G189 B242	
7.	12		174		R242 G190 B149	
8.	13		171		R201 G200 B195	
9.	16		114		R92 G43 B15	
10.	15		808		R214 G1 B26	
11.	17		254		R117 G0 B10	
12.	6		3,668		R235 G87 B124	
13.	7		1,153		R189 G98 B19	
14.	10		212		R24 G96 B135	
15.	8		5,789	8	Black	Default
16.	9		499	9	White	Default

Production Worksheet

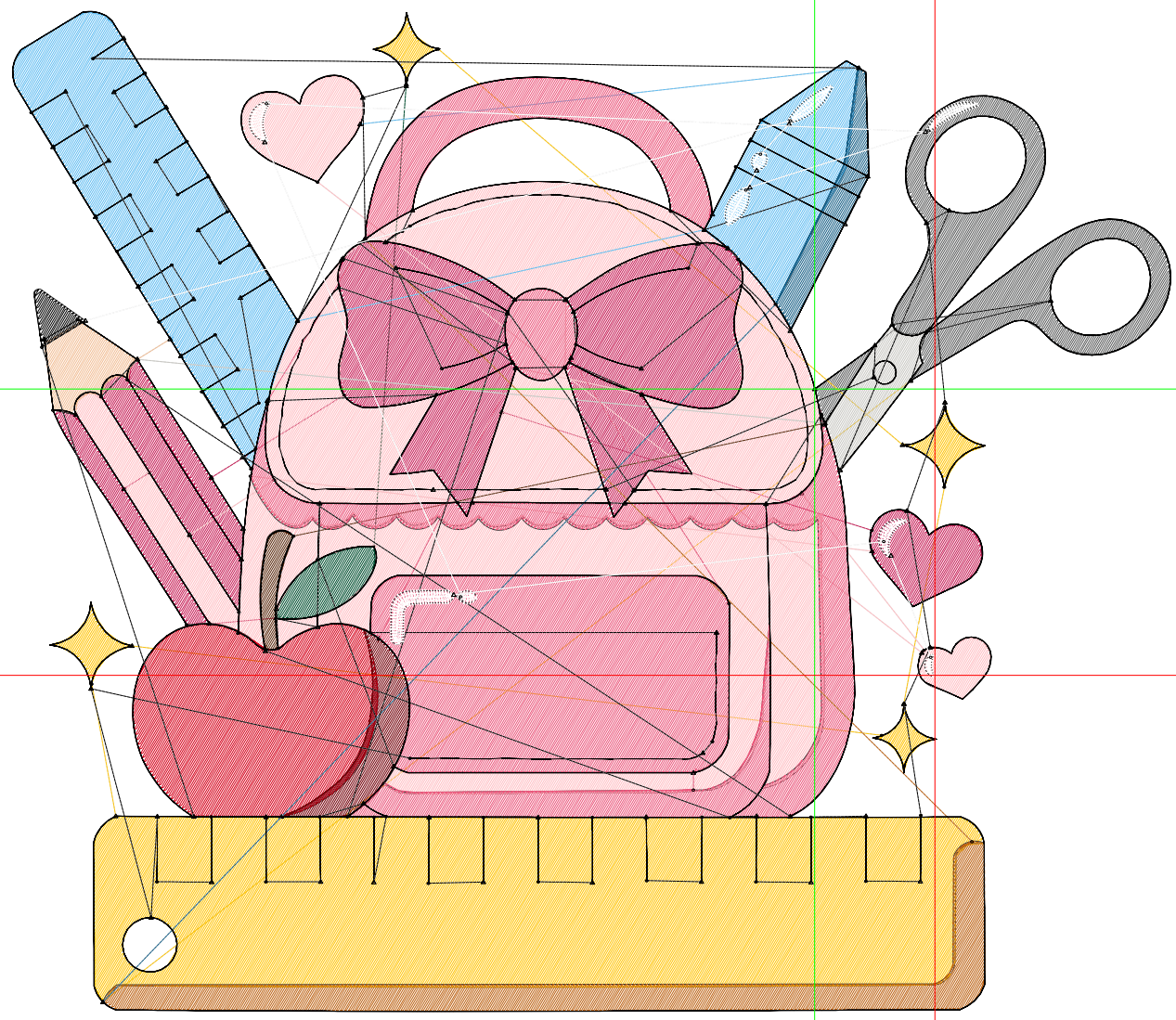
Wilcom EmbroideryStudio - Designing



Design: **6**

Title:

Stitches: 32,870
Height: 5.61 in
Width: 6.50 in
Colors: 16
Colorway: Colorway 1
Zoom: 1:1



Production Worksheet

Wilcom EmbroideryStudio - Designing



Design: **6**

Title:

Stitches: 32,870
 Height: 5.61 in
 Width: 6.50 in
 Colors: 16
 Colorway: Colorway 1
 Zoom: 1:1

Machine format: Tajima
 Color changes: 15
 Stops: 16
 Trims: 135
 Appliqués: 0
 Left: 114.3 mm
 Right: 50.7 mm
 Up: 53.8 mm
 Down: 88.7 mm
 EndX: 0.68 in
 EndY: -1.61 in
 Area 36.46 in²
 Max stitch: 9.4 mm
 Min stitch: 0.0 mm
 Max jump: 6.9 mm
 Total thread: 538.82ft
 Total bobbin: 188.38ft

Stop Sequence:

#	N#	Color	St.	Code	Name	Chart
1.	1		1,188		R91 G92 B92	
2.	2		4,456		R255 G197 B8	
3.	3		193		R1 G79 B48	
4.	5		3,368		R199 G29 B86	
5.	4		6,166		R255 G191 B196	
6.	14		2,017		R97 G189 B242	
7.	12		226		R242 G190 B149	
8.	13		222		R201 G200 B195	
9.	16		135		R92 G43 B15	
10.	15		1,079		R214 G1 B26	
11.	17		324		R117 G0 B10	
12.	6		4,750		R235 G87 B124	
13.	7		1,450		R189 G98 B19	
14.	10		262		R24 G96 B135	
15.	8		6,467	8	Black	Default
16.	9		565	9	White	Default

Production Worksheet

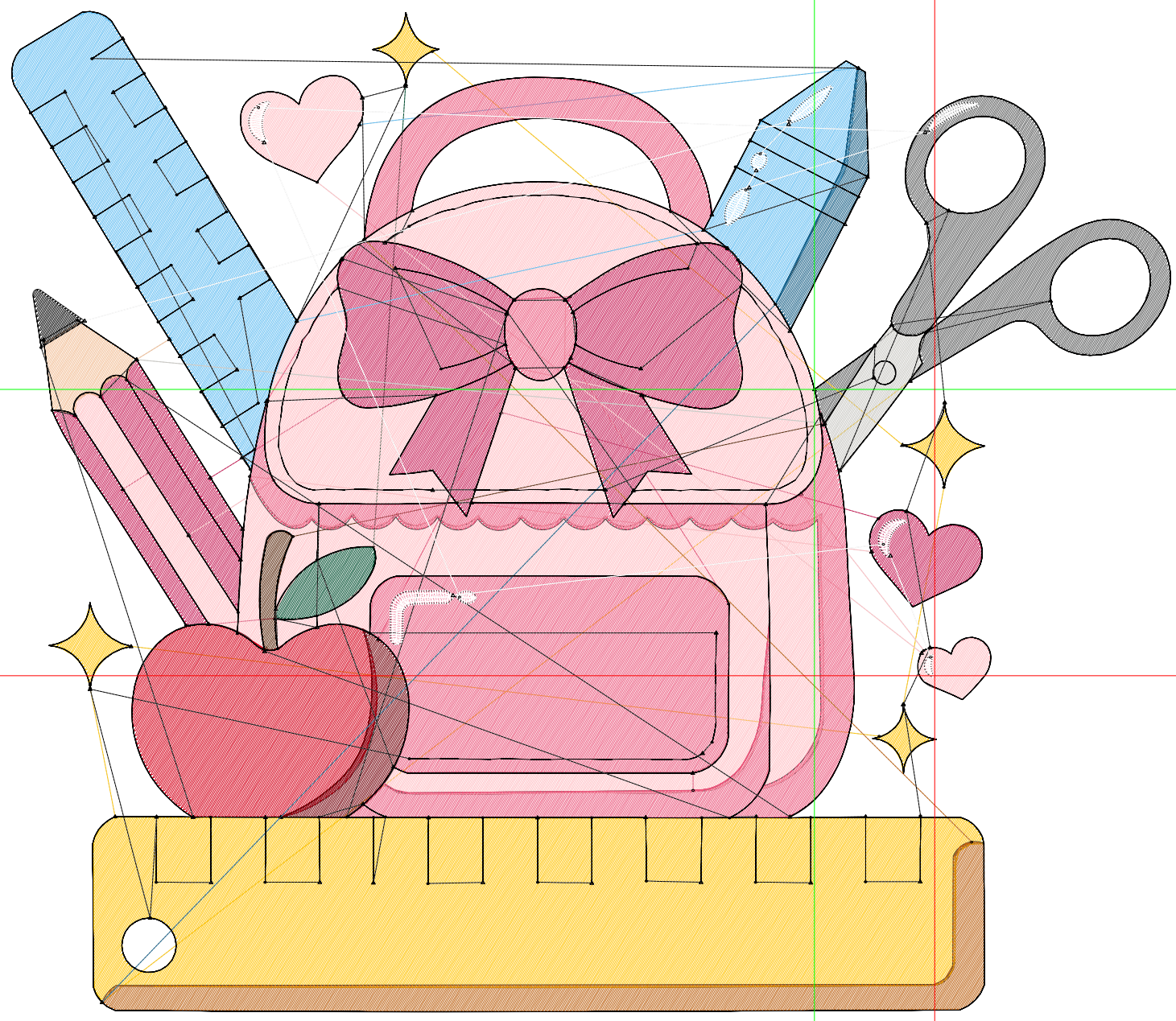
Wilcom EmbroideryStudio - Designing



Design: 7

Title:

Stitches: 40,144
Height: 6.48 in
Width: 7.50 in
Colors: 16
Colorway: Colorway 1
Zoom: 1:1



Production Worksheet

Wilcom EmbroideryStudio - Designing



Design: **7**

Title:

Stitches: 40,144
 Height: 6.48 in
 Width: 7.50 in
 Colors: 16
 Colorway: Colorway 1
 Zoom: 1:1

Machine format: Tajima
 Color changes: 15
 Stops: 16
 Trims: 135
 Appliqués: 0
 Left: 131.9 mm
 Right: 58.5 mm
 Up: 62.1 mm
 Down: 102.4 mm
 EndX: 0.78 in
 EndY: -1.85 in
 Area 48.55 in²
 Max stitch: 10.9 mm
 Min stitch: 0.0 mm
 Max jump: 7.0 mm
 Total thread: 681.23ft
 Total bobbin: 244.48ft

Stop Sequence:

#	N#	Color	St.	Code	Name	Chart
1.	1		1,452		R91 G92 B92	
2.	2		5,661		R255 G197 B8	
3.	3		237		R1 G79 B48	
4.	5		4,195		R199 G29 B86	
5.	4		7,703		R255 G191 B196	
6.	14		2,573		R97 G189 B242	
7.	12		279		R242 G190 B149	
8.	13		278		R201 G200 B195	
9.	16		169		R92 G43 B15	
10.	15		1,389		R214 G1 B26	
11.	17		395		R117 G0 B10	
12.	6		5,956		R235 G87 B124	
13.	7		1,766		R189 G98 B19	
14.	10		319		R24 G96 B135	
15.	8		7,134	8	Black	Default
16.	9		636	9	White	Default