

Production Worksheet

Wilcom EmbroideryStudio - Designing



Design: **3**

Title:

Stitches: 26,909
 Height: 3.51 in
 Width: 3.31 in
 Colors: 15
 Colorway: Colorway 1
 Zoom: 1:1

Machine format: Tajima
 Color changes: 14
 Stops: 15
 Trims: 192
 Appliqués: 0
 Left: 49.5 mm
 Right: 34.6 mm
 Up: 55.7 mm
 Down: 33.5 mm
 EndX: 0.00 in
 EndY: 0.00 in
 Area: 11.63 in²
 Max stitch: 11.3 mm
 Min stitch: 0.0 mm
 Max jump: 7.0 mm
 Total thread: 329.05ft
 Total bobbin: 87.44ft

Stop Sequence:

#	N#	Color	St.	Code	Name	Chart
1.	1		2,648		R255 G99 B128	
2.	4		969		R181 G217 B255	
3.	5		1,393		R56 G82 B49	
4.	14		155	14	Brown	Default
5.	9		1,829		R201 G52 B77	
6.	15		1,033		R245 G175 B141	
7.	7		343		R112 G73 B37	
8.	11		2,031		R255 G123 B139	
9.	12		2,123		R230 G175 B163	
10.	13		971		R255 G216 B209	
11.	8		1,880		R128 G33 B49	
12.	16		479		R204 G133 B102	
13.	10		6,624		R71 G163 B1	
14.	3		4,241		R79 G170 B255	
15.	6		188		R117 G62 B47	



Production Worksheet

Wilcom EmbroideryStudio - Designing



Design: **4**

Title:

Stitches: 30,655
 Height: 4.01 in
 Width: 3.78 in
 Colors: 15
 Colorway: Colorway 1
 Zoom: 1:1

Machine format: Tajima
 Color changes: 14
 Stops: 15
 Trims: 209
 Appliqués: 0
 Left: 55.5 mm
 Right: 40.6 mm
 Up: 62.1 mm
 Down: 39.8 mm
 EndX: 0.00 in
 EndY: 0.00 in
 Area: 15.18 in²
 Max stitch: 7.1 mm
 Min stitch: 0.0 mm
 Max jump: 7.0 mm
 Total thread: 386.82ft
 Total bobbin: 107.11ft

Stop Sequence:

#	N#	Color	St.	Code	Name	Chart
1.	1		2,891		R255 G99 B128	
2.	4		1,158		R181 G217 B255	
3.	5		1,603		R56 G82 B49	
4.	14		174	14	Brown	Default
5.	9		2,086		R201 G52 B77	
6.	15		1,175		R245 G175 B141	
7.	7		396		R112 G73 B37	
8.	11		2,390		R255 G123 B139	
9.	12		2,440		R230 G175 B163	
10.	13		1,089		R255 G216 B209	
11.	8		2,151		R128 G33 B49	
12.	16		537		R204 G133 B102	
13.	10		7,484		R71 G163 B1	
14.	3		4,870		R79 G170 B255	
15.	6		209		R117 G62 B47	



Production Worksheet

Wilcom EmbroideryStudio - Designing



Design: **4**

Title:

Stitches: 34,435
 Height: 4.51 in
 Width: 4.26 in
 Colors: 15
 Colorway: Colorway 1
 Zoom: 1:1

Machine format: Tajima
 Color changes: 14
 Stops: 15
 Trims: 222
 Appliqués: 0
 Left: 61.5 mm
 Right: 46.6 mm
 Up: 68.4 mm
 Down: 46.2 mm
 EndX: 0.00 in
 EndY: 0.00 in
 Area: 19.21 in²
 Max stitch: 7.0 mm
 Min stitch: 0.0 mm
 Max jump: 7.0 mm
 Total thread: 447.67ft
 Total bobbin: 128.47ft

Stop Sequence:

#	N#	Color	St.	Code	Name	Chart
1.	1		3,231		R255 G99 B128	
2.	4		1,317		R181 G217 B255	
3.	5		1,805		R56 G82 B49	
4.	14		179	14	Brown	Default
5.	9		2,352		R201 G52 B77	
6.	15		1,312		R245 G175 B141	
7.	7		454		R112 G73 B37	
8.	11		2,709		R255 G123 B139	
9.	12		2,805		R230 G175 B163	
10.	13		1,241		R255 G216 B209	
11.	8		2,362		R128 G33 B49	
12.	16		621		R204 G133 B102	
13.	10		8,386		R71 G163 B1	
14.	3		5,429		R79 G170 B255	
15.	6		230		R117 G62 B47	



Production Worksheet

Wilcom EmbroideryStudio - Designing



Design: **5**

Title:

Stitches: 38,171
 Height: 5.01 in
 Width: 4.73 in
 Colors: 15
 Colorway: Colorway 1
 Zoom: 1:1

Machine format: Tajima
 Color changes: 14
 Stops: 15
 Trims: 230
 Appliqués: 0
 Left: 67.5 mm
 Right: 52.6 mm
 Up: 74.8 mm
 Down: 52.5 mm
 EndX: 0.00 in
 EndY: 0.00 in
 Area: 23.71 in²
 Max stitch: 7.3 mm
 Min stitch: 0.0 mm
 Max jump: 7.0 mm
 Total thread: 510.84ft
 Total bobbin: 151.38ft

Stop Sequence:

#	N#	Color	St.	Code	Name	Chart
1.	1		3,542		R255 G99 B128	
2.	4		1,506		R181 G217 B255	
3.	5		2,008		R56 G82 B49	
4.	14		191	14	Brown	Default
5.	9		2,601		R201 G52 B77	
6.	15		1,470		R245 G175 B141	
7.	7		509		R112 G73 B37	
8.	11		3,086		R255 G123 B139	
9.	12		3,131		R230 G175 B163	
10.	13		1,425		R255 G216 B209	
11.	8		2,575		R128 G33 B49	
12.	16		677		R204 G133 B102	
13.	10		9,278		R71 G163 B1	
14.	3		5,916		R79 G170 B255	
15.	6		254		R117 G62 B47	



Production Worksheet

Wilcom EmbroideryStudio - Designing



Design: **5**

Title:

Stitches: 42,246
Height: 5.51 in
Width: 5.20 in
Colors: 15
Colorway: Colorway 1
Zoom: 1:1



Production Worksheet

Wilcom EmbroideryStudio - Designing



Design: **5**

Title:

Stitches: 42,246
 Height: 5.51 in
 Width: 5.20 in
 Colors: 15
 Colorway: Colorway 1
 Zoom: 1:1

Machine format: Tajima
 Color changes: 14
 Stops: 15
 Trims: 239
 Appliqués: 0
 Left: 73.5 mm
 Right: 58.6 mm
 Up: 81.1 mm
 Down: 58.9 mm
 EndX: 0.00 in
 EndY: 0.00 in
 Area 28.67 in²
 Max stitch: 9.0 mm
 Min stitch: 0.0 mm
 Max jump: 7.0 mm
 Total thread: 580.08ft
 Total bobbin: 176.56ft

Stop Sequence:

#	N#	Color	St.	Code	Name	Chart
1.	1		3,936		R255 G99 B128	
2.	4		1,692		R181 G217 B255	
3.	5		2,241		R56 G82 B49	
4.	14		203	14	Brown	Default
5.	9		2,947		R201 G52 B77	
6.	15		1,630		R245 G175 B141	
7.	7		617		R112 G73 B37	
8.	11		3,380		R255 G123 B139	
9.	12		3,505		R230 G175 B163	
10.	13		1,597		R255 G216 B209	
11.	8		2,810		R128 G33 B49	
12.	16		744		R204 G133 B102	
13.	10		10,296		R71 G163 B1	
14.	3		6,367		R79 G170 B255	
15.	6		279		R117 G62 B47	

Production Worksheet

Wilcom EmbroideryStudio - Designing



Design: **6**

Title:

Stitches: 46,179
Height: 6.01 in
Width: 5.67 in
Colors: 15
Colorway: Colorway 1
Zoom: 1:1



Production Worksheet

Wilcom EmbroideryStudio - Designing



Design: **6**

Title:

Stitches: 46,179
 Height: 6.01 in
 Width: 5.67 in
 Colors: 15
 Colorway: Colorway 1
 Zoom: 1:1

Machine format: Tajima
 Color changes: 14
 Stops: 15
 Trims: 246
 Appliqués: 0
 Left: 79.5 mm
 Right: 64.6 mm
 Up: 87.5 mm
 Down: 65.2 mm
 EndX: 0.00 in
 EndY: 0.00 in
 Area 34.10 in²
 Max stitch: 11.8 mm
 Min stitch: 0.0 mm
 Max jump: 7.0 mm
 Total thread: 650.69ft
 Total bobbin: 203.11ft

Stop Sequence:

#	N#	Color	St.	Code	Name	Chart
1.	1		4,257		R255 G99 B128	
2.	4		1,908		R181 G217 B255	
3.	5		2,486		R56 G82 B49	
4.	14		216	14	Brown	Default
5.	9		3,217		R201 G52 B77	
6.	15		1,804		R245 G175 B141	
7.	7		677		R112 G73 B37	
8.	11		3,673		R255 G123 B139	
9.	12		3,971		R230 G175 B163	
10.	13		1,705		R255 G216 B209	
11.	8		3,127		R128 G33 B49	
12.	16		818		R204 G133 B102	
13.	10		11,125		R71 G163 B1	
14.	3		6,893		R79 G170 B255	
15.	6		300		R117 G62 B47	

Production Worksheet

Wilcom EmbroideryStudio - Designing



Design: **6**

Title:

Stitches: 50,258
Height: 6.51 in
Width: 6.14 in
Colors: 15
Colorway: Colorway 1
Zoom: 1:1



Production Worksheet

Wilcom EmbroideryStudio - Designing



Design: **6**

Title:

Stitches: 50,258
 Height: 6.51 in
 Width: 6.14 in
 Colors: 15
 Colorway: Colorway 1
 Zoom: 1:1

Machine format: Tajima
 Color changes: 14
 Stops: 15
 Trims: 252
 Appliqués: 0
 Left: 85.5 mm
 Right: 70.6 mm
 Up: 93.8 mm
 Down: 71.6 mm
 EndX: 0.00 in
 EndY: 0.00 in
 Area 40.01 in²
 Max stitch: 7.0 mm
 Min stitch: 0.0 mm
 Max jump: 7.0 mm
 Total thread: 725.22ft
 Total bobbin: 231.42ft

Stop Sequence:

#	N#	Color	St.	Code	Name	Chart
1.	1		4,575		R255 G99 B128	
2.	4		2,145		R181 G217 B255	
3.	5		2,735		R56 G82 B49	
4.	14		220	14	Brown	Default
5.	9		3,513		R201 G52 B77	
6.	15		1,971		R245 G175 B141	
7.	7		723		R112 G73 B37	
8.	11		3,998		R255 G123 B139	
9.	12		4,317		R230 G175 B163	
10.	13		1,904		R255 G216 B209	
11.	8		3,365		R128 G33 B49	
12.	16		876		R204 G133 B102	
13.	10		12,160		R71 G163 B1	
14.	3		7,429		R79 G170 B255	
15.	6		325		R117 G62 B47	

Production Worksheet

Wilcom EmbroideryStudio - Designing



Design: 7

Title:

Stitches: 54,507
Height: 7.01 in
Width: 6.62 in
Colors: 15
Colorway: Colorway 1
Zoom: 1:1



Production Worksheet

Wilcom EmbroideryStudio - Designing



Design: **7**

Title:

Stitches: 54,507
 Height: 7.01 in
 Width: 6.62 in
 Colors: 15
 Colorway: Colorway 1
 Zoom: 1:1

Machine format: Tajima
 Color changes: 14
 Stops: 15
 Trims: 259
 Appliqués: 0
 Left: 91.5 mm
 Right: 76.6 mm
 Up: 100.2 mm
 Down: 77.9 mm
 EndX: 0.00 in
 EndY: 0.00 in
 Area 46.40 in²
 Max stitch: 7.1 mm
 Min stitch: 0.0 mm
 Max jump: 7.0 mm
 Total thread: 804.46ft
 Total bobbin: 261.86ft

Stop Sequence:

#	N#	Color	St.	Code	Name	Chart
1.	1		4,902		R255 G99 B128	
2.	4		2,360		R181 G217 B255	
3.	5		3,026		R56 G82 B49	
4.	14		227	14	Brown	Default
5.	9		3,858		R201 G52 B77	
6.	15		2,144		R245 G175 B141	
7.	7		792		R112 G73 B37	
8.	11		4,390		R255 G123 B139	
9.	12		4,742		R230 G175 B163	
10.	13		2,118		R255 G216 B209	
11.	8		3,637		R128 G33 B49	
12.	16		943		R204 G133 B102	
13.	10		13,024		R71 G163 B1	
14.	3		7,993		R79 G170 B255	
15.	6		349		R117 G62 B47	

Production Worksheet

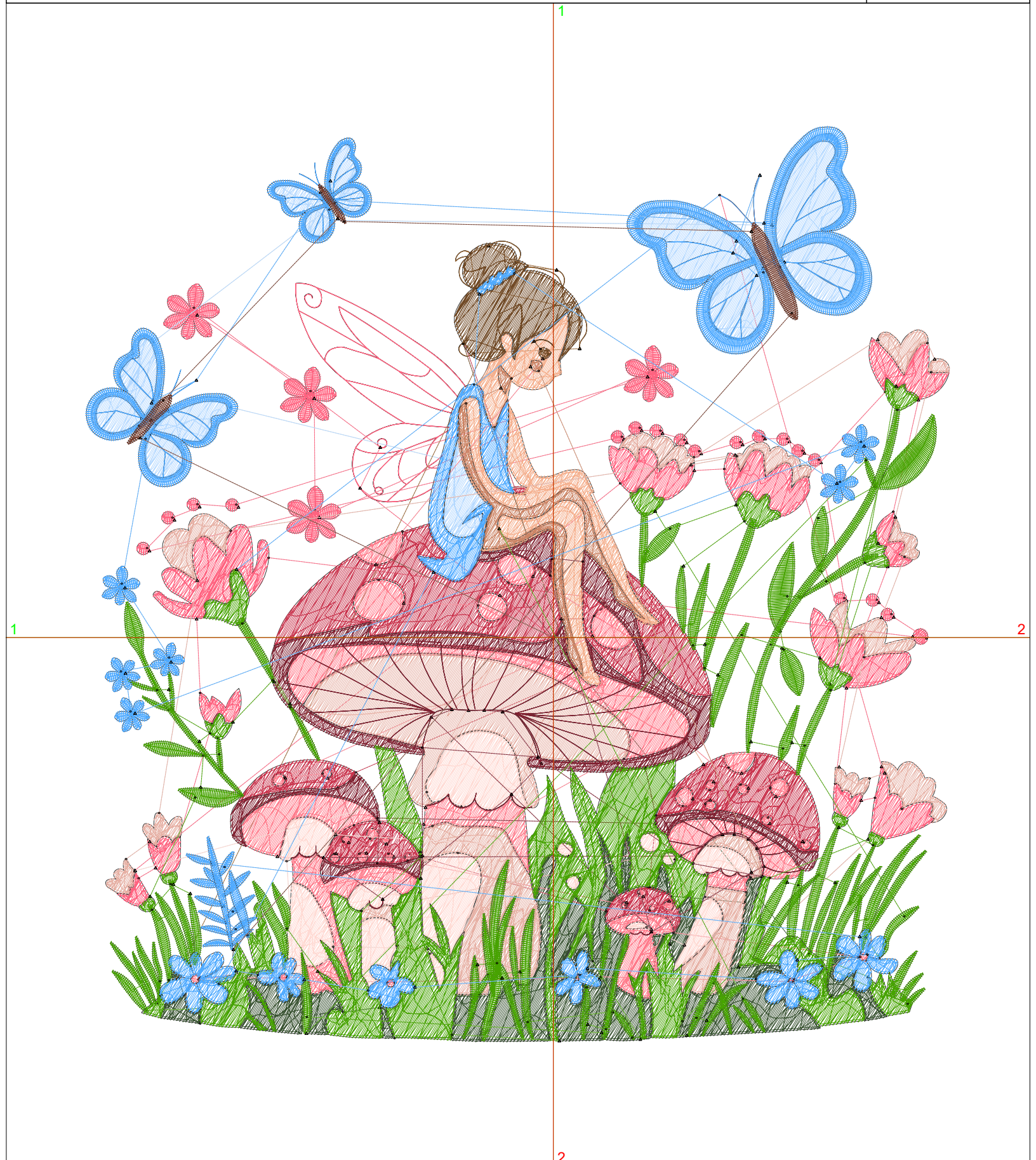
Wilcom EmbroideryStudio - Designing



Design: **7**

Title:

Stitches: 58,625
Height: 7.51 in
Width: 7.09 in
Colors: 15
Colorway: Colorway 1
Zoom: 1:1



Production Worksheet

Wilcom EmbroideryStudio - Designing



Design: **7**

Title:

Stitches: 58,625
 Height: 7.51 in
 Width: 7.09 in
 Colors: 15
 Colorway: Colorway 1
 Zoom: 1:1

Machine format: Tajima
 Color changes: 14
 Stops: 15
 Trims: 262
 Appliqués: 0
 Left: 97.5 mm
 Right: 82.6 mm
 Up: 106.5 mm
 Down: 84.3 mm
 EndX: 0.00 in
 EndY: 0.00 in
 Area 53.26 in²
 Max stitch: 7.7 mm
 Min stitch: 0.0 mm
 Max jump: 7.0 mm
 Total thread: 882.50ft
 Total bobbin: 292.09ft

Stop Sequence:

#	N#	Color	St.	Code	Name	Chart
1.	1		5,266		R255 G99 B128	
2.	4		2,618		R181 G217 B255	
3.	5		3,276		R56 G82 B49	
4.	14		235	14	Brown	Default
5.	9		4,170		R201 G52 B77	
6.	15		2,434		R245 G175 B141	
7.	7		862		R112 G73 B37	
8.	11		4,709		R255 G123 B139	
9.	12		4,890		R230 G175 B163	
10.	13		2,264		R255 G216 B209	
11.	8		3,870		R128 G33 B49	
12.	16		1,016		R204 G133 B102	
13.	10		14,051		R71 G163 B1	
14.	3		8,593		R79 G170 B255	
15.	6		369		R117 G62 B47	