

Production Worksheet

Wilcom EmbroideryStudio - Designing



Design: **3**

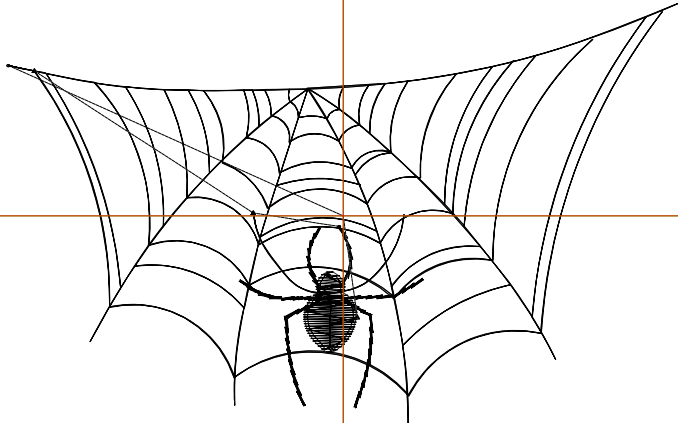
Title:

Stitches: 1,480
 Height: 2.19 in
 Width: 3.50 in
 Colors: 1
 Colorway: Colorway 1
 Zoom: 1:1

Machine format: Tajima
 Color changes: 0
 Stops: 1
 Trims: 3
 Appliqués: 0
 Left: 44.3 mm
 Right: 44.6 mm
 Up: 28.2 mm
 Down: 27.5 mm
 EndX: 0.00 in
 EndY: 0.00 in
 Area: 7.67 in²
 Max stitch: 7.0 mm
 Min stitch: 0.5 mm
 Max jump: 6.3 mm
 Total thread: 23.39ft
 Total bobbin: 7.91ft

Stop Sequence:

#	N#	Color	St.	Code	Name	Chart
1.	8		1,478	8	Black	Default



Production Worksheet

Wilcom EmbroideryStudio - Designing



Design: **4**

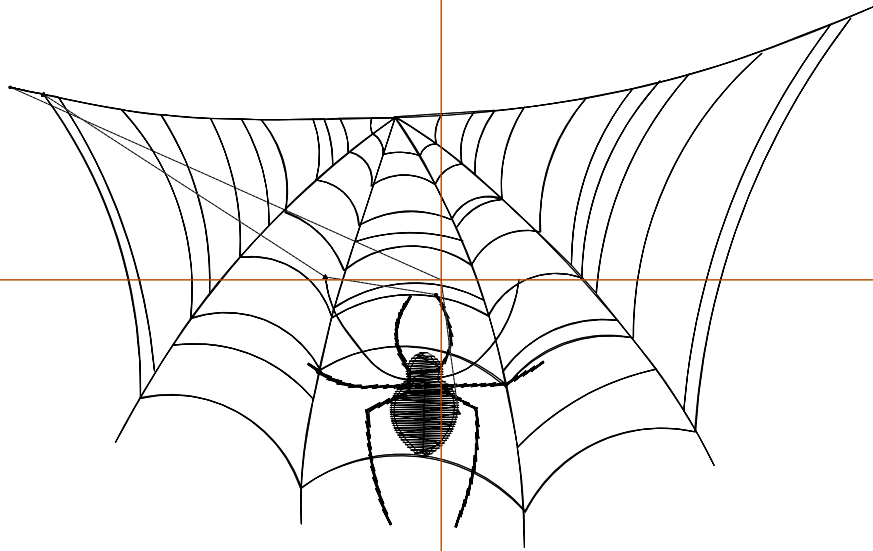
Title:

Stitches: 1,835
 Height: 2.82 in
 Width: 4.50 in
 Colors: 1
 Colorway: Colorway 1
 Zoom: 1:1

Machine format: Tajima
 Color changes: 0
 Stops: 1
 Trims: 3
 Appliqués: 0
 Left: 57.0 mm
 Right: 57.3 mm
 Up: 36.2 mm
 Down: 35.4 mm
 EndX: 0.00 in
 EndY: 0.00 in
 Area: 12.68 in²
 Max stitch: 6.9 mm
 Min stitch: 0.5 mm
 Max jump: 6.3 mm
 Total thread: 30.21ft
 Total bobbin: 10.57ft

Stop Sequence:

#	N#	Color	St.	Code	Name	Chart
1.	8		1,833	8	Black	Default



Production Worksheet

Wilcom EmbroideryStudio - Designing



Design: **5**

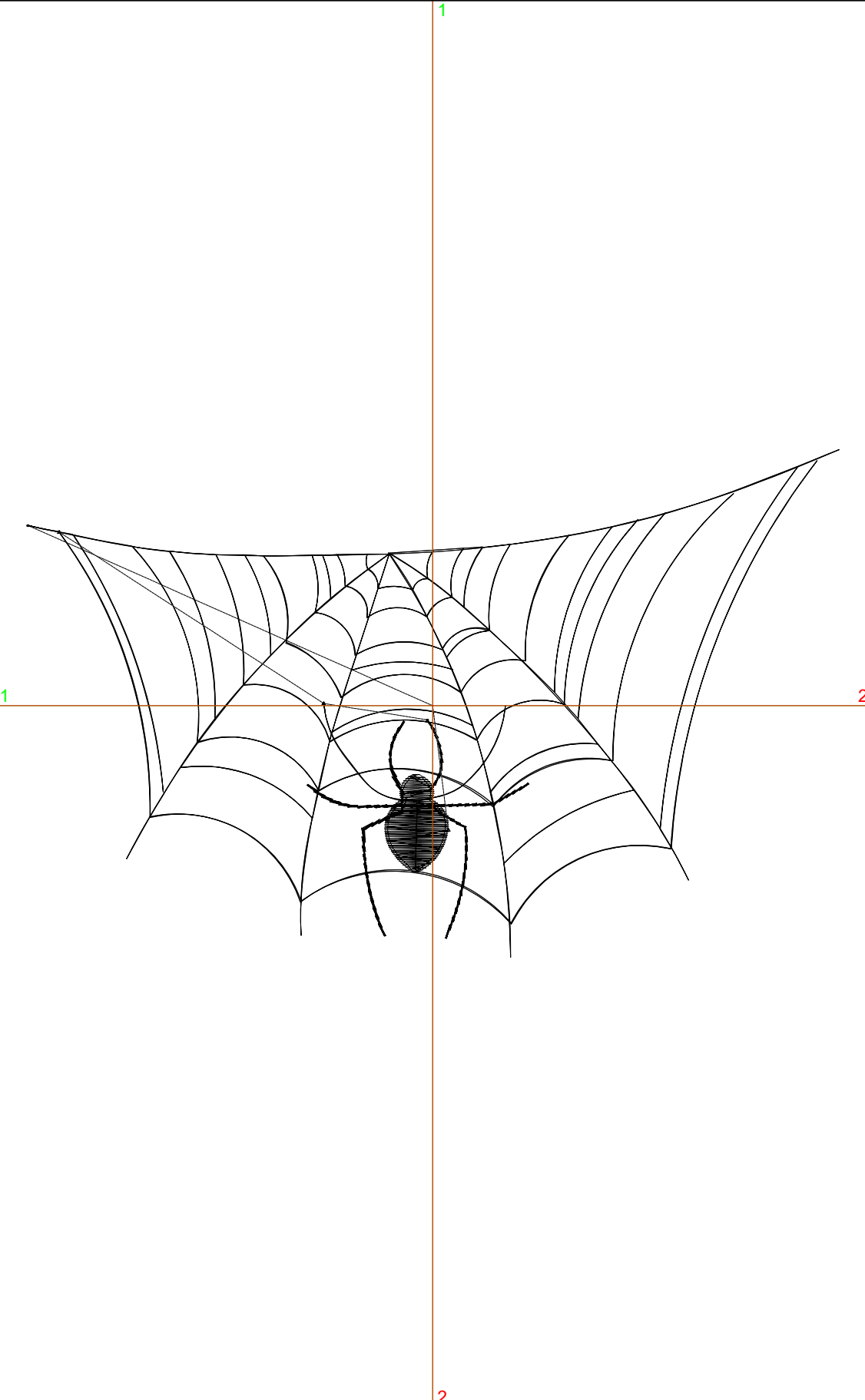
Title:

Stitches: 2,195
 Height: 3.44 in
 Width: 5.50 in
 Colors: 1
 Colorway: Colorway 1
 Zoom: 1:1

Machine format: Tajima
 Color changes: 0
 Stops: 1
 Trims: 3
 Appliqués: 0
 Left: 69.7 mm
 Right: 70.0 mm
 Up: 44.1 mm
 Down: 43.4 mm
 EndX: 0.00 in
 EndY: 0.00 in
 Area: 18.94 in²
 Max stitch: 7.0 mm
 Min stitch: 0.5 mm
 Max jump: 7.0 mm
 Total thread: 37.28ft
 Total bobbin: 13.36ft

Stop Sequence:

#	N#	Color	St.	Code	Name	Chart
1.	8	█	2,193	8	Black	Default



Production Worksheet

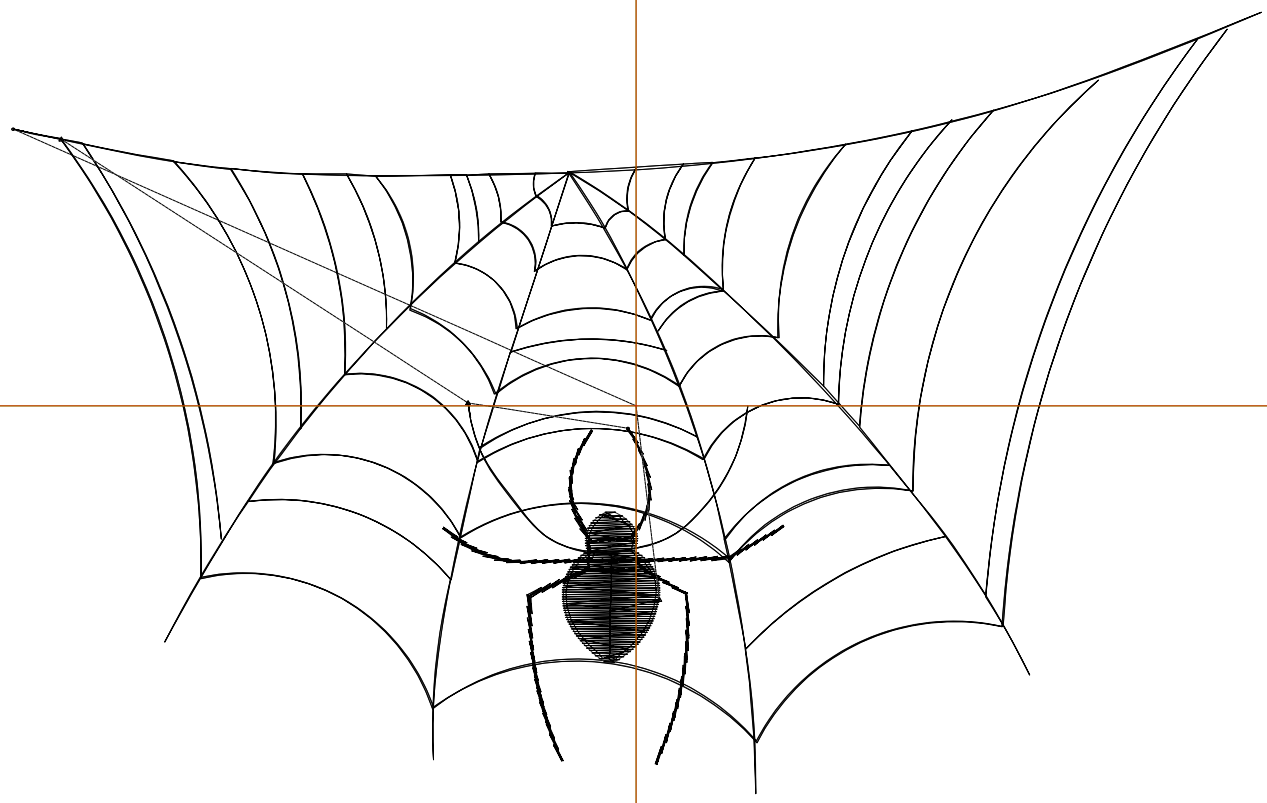
Wilcom EmbroideryStudio - Designing



Design: **6**

Title:

Stitches: 2,572
Height: 4.07 in
Width: 6.50 in
Colors: 1
Colorway: Colorway 1
Zoom: 1:1



Production Worksheet

Wilcom EmbroideryStudio - Designing



Design: **6**

Title:

Stitches: 2,572
 Height: 4.07 in
 Width: 6.50 in
 Colors: 1
 Colorway: Colorway 1
 Zoom: 1:1

Machine format: Tajima
 Color changes: 0
 Stops: 1
 Trims: 3
 Appliqués: 0
 Left: 82.4 mm
 Right: 82.7 mm
 Up: 52.1 mm
 Down: 51.3 mm
 EndX: 0.00 in
 EndY: 0.00 in
 Area 26.46 in²
 Max stitch: 7.0 mm
 Min stitch: 0.5 mm
 Max jump: 6.9 mm
 Total thread: 44.76ft
 Total bobbin: 16.33ft

Stop Sequence:

#	N#	Color	St.	Code	Name	Chart
1.	8	█	2,570	8	Black	Default

Production Worksheet

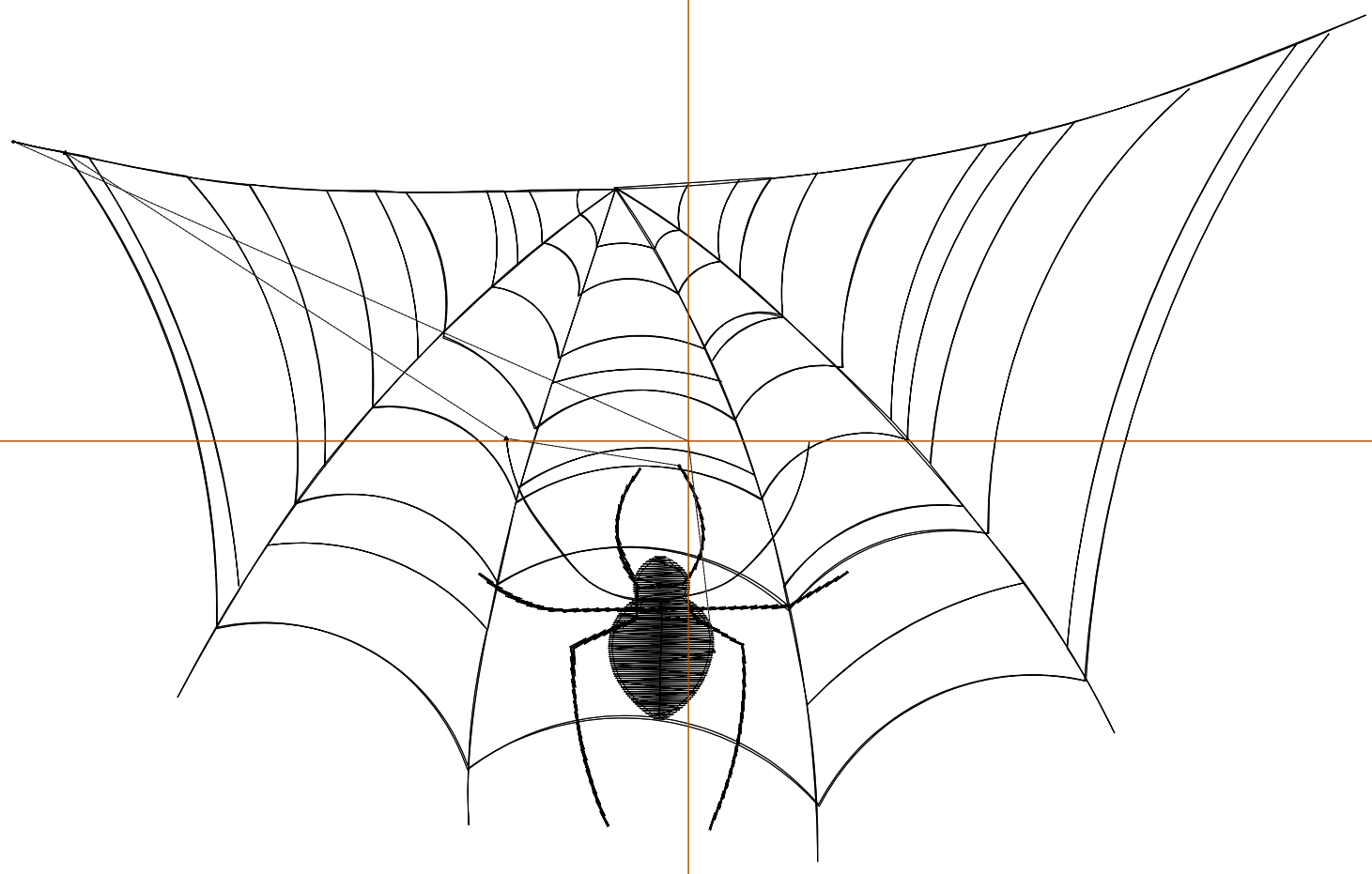
Wilcom EmbroideryStudio - Designing



Design: **7**

Title:

Stitches: 2,967
Height: 4.70 in
Width: 7.50 in
Colors: 1
Colorway: Colorway 1
Zoom: 1:1



Production Worksheet

Wilcom EmbroideryStudio - Designing



Design: **7**

Title:

Stitches: 2,967
 Height: 4.70 in
 Width: 7.50 in
 Colors: 1
 Colorway: Colorway 1
 Zoom: 1:1

Machine format: Tajima
 Color changes: 0
 Stops: 1
 Trims: 3
 Appliqués: 0
 Left: 95.1 mm
 Right: 95.4 mm
 Up: 60.0 mm
 Down: 59.3 mm
 EndX: 0.00 in
 EndY: 0.00 in
 Area 35.23 in²
 Max stitch: 7.0 mm
 Min stitch: 0.5 mm
 Max jump: 6.9 mm
 Total thread: 52.65ft
 Total bobbin: 19.47ft

Stop Sequence:

#	N#	Color	St.	Code	Name	Chart
1.	8	█	2,965	8	Black	Default