

Production Worksheet

Wilcom EmbroideryStudio - Designing



Design: **3**

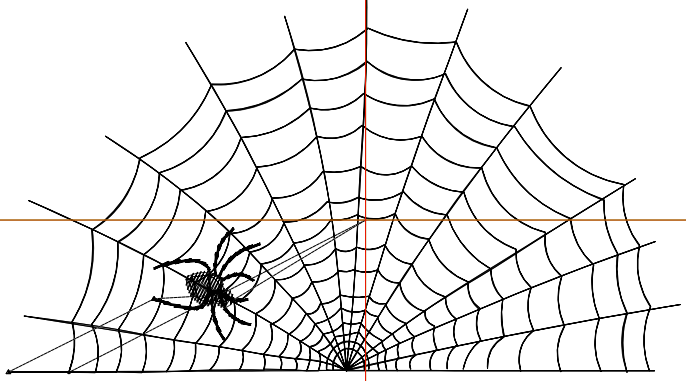
Title:

Stitches: 2,200
 Height: 2.00 in
 Width: 3.50 in
 Colors: 1
 Colorway: Colorway 1
 Zoom: 1:1

Machine format: Tajima
 Color changes: 0
 Stops: 1
 Trims: 3
 Appliqués: 0
 Left: 47.2 mm
 Right: 41.7 mm
 Up: 30.5 mm
 Down: 20.2 mm
 EndX: 0.00 in
 EndY: 0.00 in
 Area: 6.99 in²
 Max stitch: 6.5 mm
 Min stitch: 0.5 mm
 Max jump: 6.5 mm
 Total thread: 30.66ft
 Total bobbin: 9.42ft

Stop Sequence:

#	N#	Color	St.	Code	Name	Chart
1.	8		2,198	8	Black	Default



Production Worksheet

Wilcom EmbroideryStudio - Designing



Design: **4**

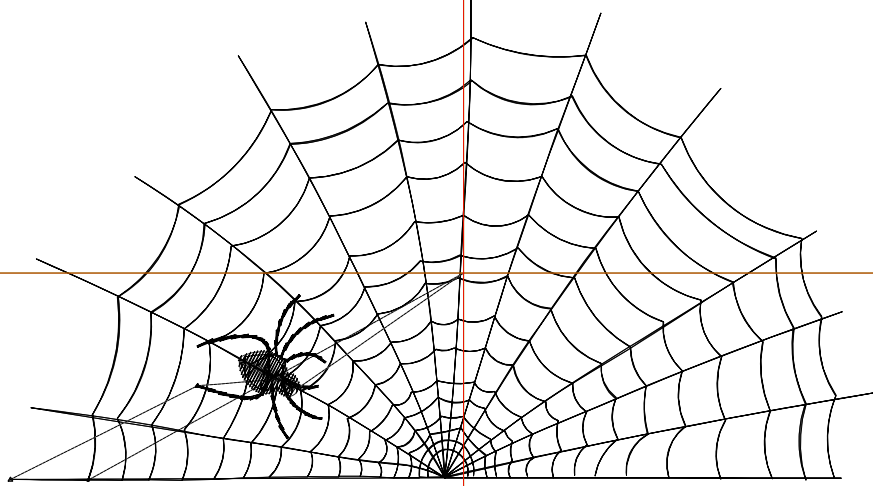
Title:

Stitches: 2,618
 Height: 2.57 in
 Width: 4.50 in
 Colors: 1
 Colorway: Colorway 1
 Zoom: 1:1

Machine format: Tajima
 Color changes: 0
 Stops: 1
 Trims: 3
 Appliqués: 0
 Left: 59.9 mm
 Right: 54.4 mm
 Up: 37.8 mm
 Down: 27.4 mm
 EndX: 0.00 in
 EndY: 0.00 in
 Area: 11.55 in²
 Max stitch: 6.2 mm
 Min stitch: 0.5 mm
 Max jump: 6.2 mm
 Total thread: 38.28ft
 Total bobbin: 12.31ft

Stop Sequence:

#	N#	Color	St.	Code	Name	Chart
1.	8		2,616	8	Black	Default



Production Worksheet

Wilcom EmbroideryStudio - Designing



Design: **5**

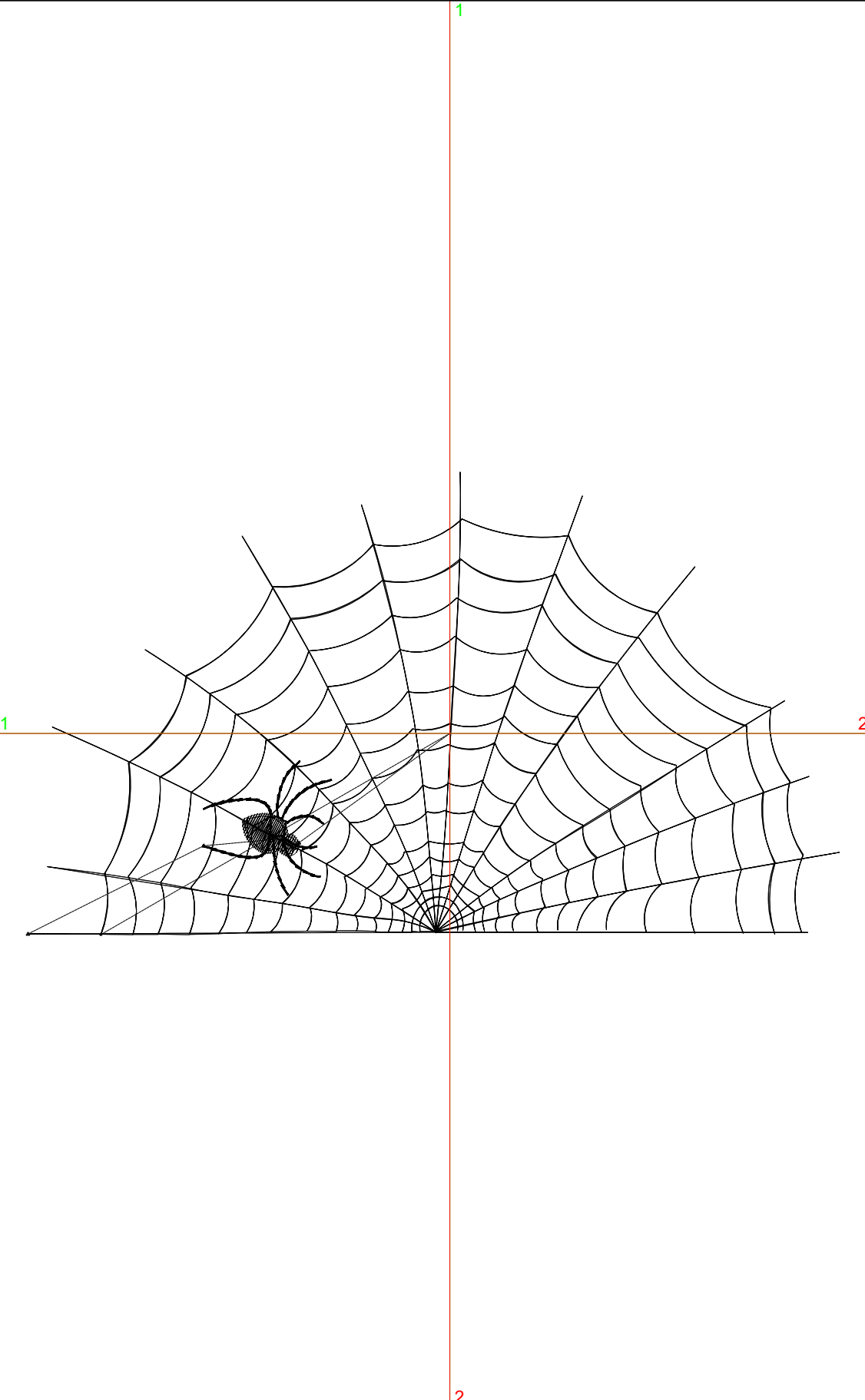
Title:

Stitches: 2,999
 Height: 3.14 in
 Width: 5.50 in
 Colors: 1
 Colorway: Colorway 1
 Zoom: 1:1

Machine format: Tajima
 Color changes: 0
 Stops: 1
 Trims: 3
 Appliqués: 0
 Left: 72.6 mm
 Right: 67.1 mm
 Up: 45.0 mm
 Down: 34.7 mm
 EndX: 0.00 in
 EndY: 0.00 in
 Area: 17.25 in²
 Max stitch: 6.7 mm
 Min stitch: 0.5 mm
 Max jump: 6.7 mm
 Total thread: 45.68ft
 Total bobbin: 15.21ft

Stop Sequence:

#	N#	Color	St.	Code	Name	Chart
1.	8	█	2,997	8	Black	Default



Production Worksheet

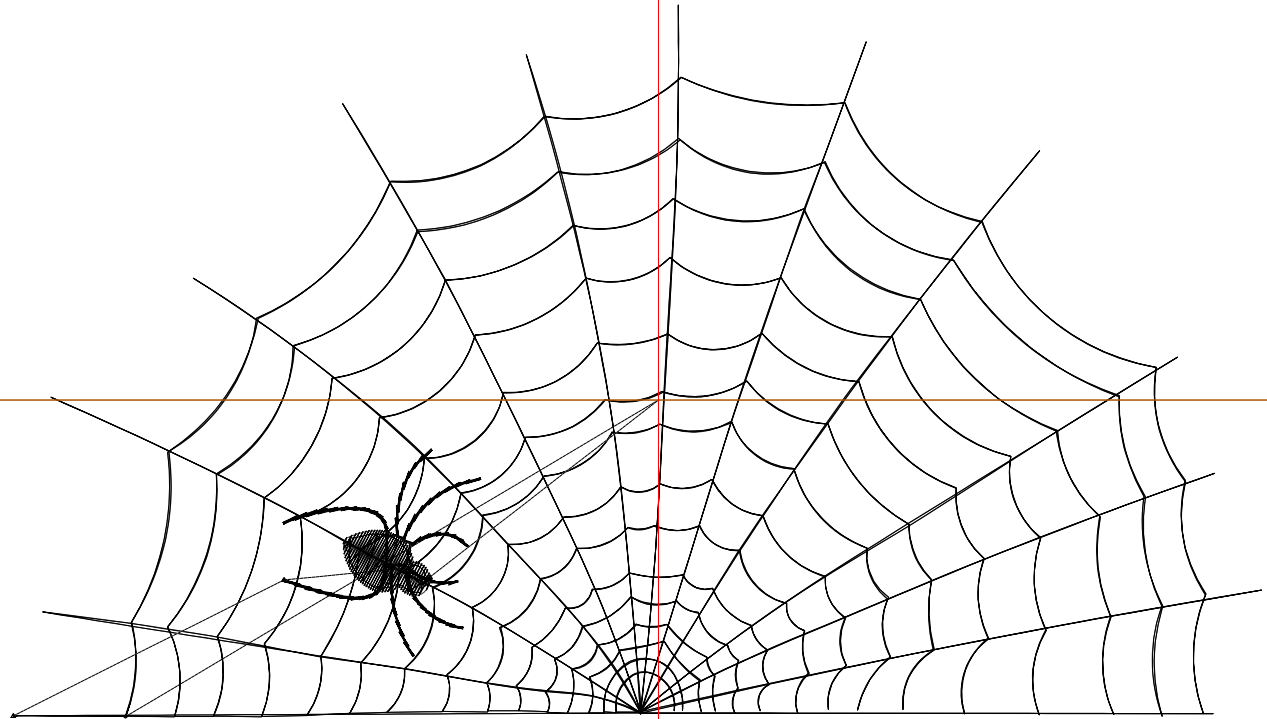
Wilcom EmbroideryStudio - Designing



Design: **6**

Title:

Stitches: 3,461
Height: 3.71 in
Width: 6.50 in
Colors: 1
Colorway: Colorway 1
Zoom: 1:1



1

1

2

2

Production Worksheet

Wilcom EmbroideryStudio - Designing



Design: **6**

Title:

Stitches: 3,461
 Height: 3.71 in
 Width: 6.50 in
 Colors: 1
 Colorway: Colorway 1
 Zoom: 1:1

Machine format: Tajima
 Color changes: 0
 Stops: 1
 Trims: 3
 Appliqués: 0
 Left: 85.3 mm
 Right: 79.8 mm
 Up: 52.2 mm
 Down: 41.9 mm
 EndX: 0.00 in
 EndY: 0.00 in
 Area 24.09 in²
 Max stitch: 6.4 mm
 Min stitch: 0.5 mm
 Max jump: 6.4 mm
 Total thread: 53.84ft
 Total bobbin: 18.25ft

Stop Sequence:

#	N#	Color	St.	Code	Name	Chart
1.	8	█	3,459	8	Black	Default

Production Worksheet

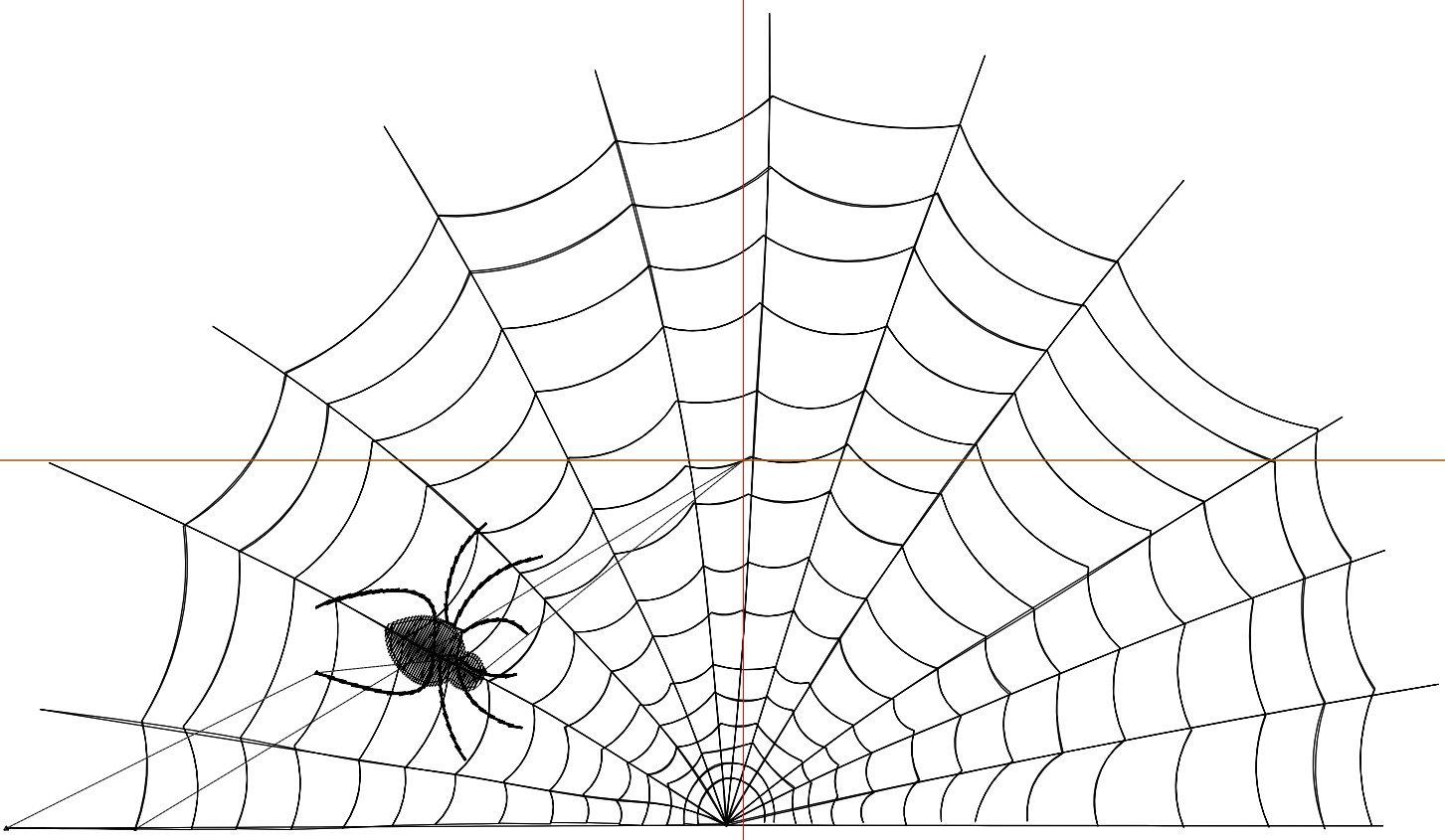
Wilcom EmbroideryStudio - Designing



Design: **7**

Title:

Stitches: 3,857
Height: 4.28 in
Width: 7.50 in
Colors: 1
Colorway: Colorway 1
Zoom: 1:1



Production Worksheet

Wilcom EmbroideryStudio - Designing



Design: **7**

Title:

Stitches: 3,857
 Height: 4.28 in
 Width: 7.50 in
 Colors: 1
 Colorway: Colorway 1
 Zoom: 1:1

Machine format: Tajima
 Color changes: 0
 Stops: 1
 Trims: 3
 Appliqués: 0
 Left: 98.0 mm
 Right: 92.5 mm
 Up: 59.5 mm
 Down: 49.1 mm
 EndX: 0.00 in
 EndY: 0.00 in
 Area 32.08 in²
 Max stitch: 6.9 mm
 Min stitch: 0.5 mm
 Max jump: 6.9 mm
 Total thread: 61.56ft
 Total bobbin: 21.29ft

Stop Sequence:

#	N#	Color	St.	Code	Name	Chart
1.	8	█	3,855	8	Black	Default