

# Production Worksheet

Wilcom EmbroideryStudio - Designing



Design: **3**

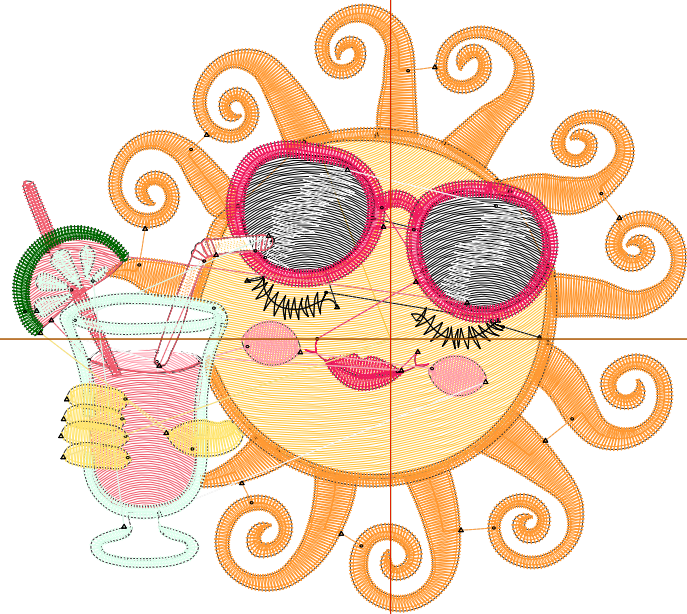
Title:

Stitches: 11,863  
 Height: 3.17 in  
 Width: 3.51 in  
 Colors: 10  
 Colorway: Colorway 1  
 Zoom: 1:1

Machine format: Tajima  
 Color changes: 9  
 Stops: 10  
 Trims: 47  
 Appliqués: 0  
 Left: 50.0 mm  
 Right: 39.2 mm  
 Up: 44.4 mm  
 Down: 36.1 mm  
 EndX: 0.00 in  
 EndY: 0.00 in  
 Area: 11.13 in<sup>2</sup>  
 Max stitch: 8.4 mm  
 Min stitch: 0.0 mm  
 Max jump: 6.9 mm  
 Total thread: 190.53ft  
 Total bobbin: 64.83ft

Stop Sequence:

#	N#	Color	St.	Code	Name	Chart
1.	2		1,830		R255 G195 B55	
2.	12		4,472	12	Orange	Default
3.	8		966	8	Black	Default
4.	3		1,007		R240 G27 B94	
5.	1		260		R255 G155 B172	
6.	9		761	9	White	Default
7.	4		963		R240 G92 B109	
8.	5		1,021		R221 G255 B237	
9.	10		189		R0 G102 B0	
10.	6		392		R255 G229 B111	



# Production Worksheet

Wilcom EmbroideryStudio - Designing



Design: **4**

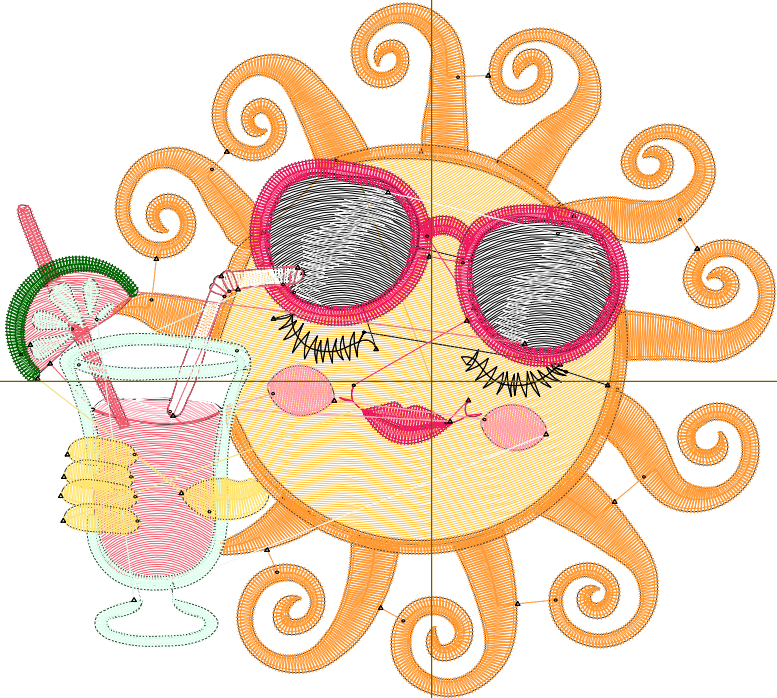
Title:

Stitches: 13,887  
 Height: 3.62 in  
 Width: 4.01 in  
 Colors: 10  
 Colorway: Colorway 1  
 Zoom: 1:1

Machine format: Tajima  
 Color changes: 9  
 Stops: 10  
 Trims: 48  
 Appliqués: 0  
 Left: 56.4 mm  
 Right: 45.5 mm  
 Up: 50.1 mm  
 Down: 41.8 mm  
 EndX: 0.00 in  
 EndY: 0.00 in  
 Area: 14.53 in<sup>2</sup>  
 Max stitch: 9.5 mm  
 Min stitch: 0.0 mm  
 Max jump: 7.0 mm  
 Total thread: 234.33ft  
 Total bobbin: 82.92ft

Stop Sequence:

#	N#	Color	St.	Code	Name	Chart
1.	2		2,328		R255 G195 B55	
2.	12		5,097	12	Orange	Default
3.	8		1,178	8	Black	Default
4.	3		1,144		R240 G27 B94	
5.	1		296		R255 G155 B172	
6.	9		871	9	White	Default
7.	4		1,157		R240 G92 B109	
8.	5		1,161		R221 G255 B237	
9.	10		211		R0 G102 B0	
10.	6		442		R255 G229 B111	



# Production Worksheet

Wilcom EmbroideryStudio - Designing



Design: **4**

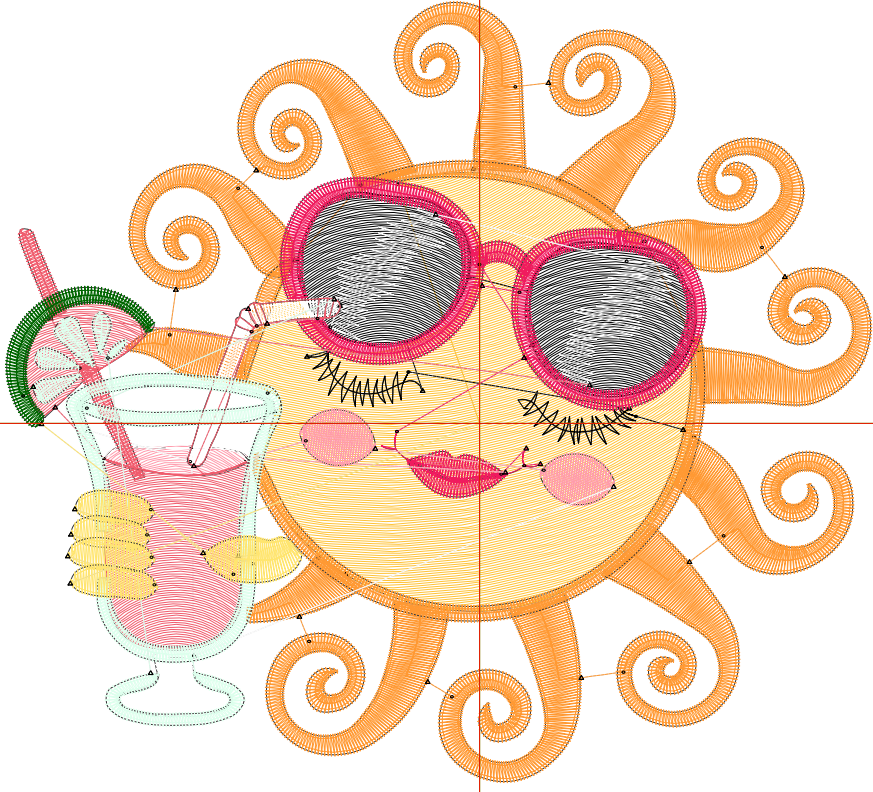
Title:

Stitches: 16,072  
 Height: 4.07 in  
 Width: 4.51 in  
 Colors: 10  
 Colorway: Colorway 1  
 Zoom: 1:1

Machine format: Tajima  
 Color changes: 9  
 Stops: 10  
 Trims: 50  
 Appliqués: 0  
 Left: 62.7 mm  
 Right: 51.9 mm  
 Up: 55.8 mm  
 Down: 47.6 mm  
 EndX: 0.00 in  
 EndY: 0.00 in  
 Area: 18.37 in<sup>2</sup>  
 Max stitch: 10.7 mm  
 Min stitch: 0.0 mm  
 Max jump: 7.0 mm  
 Total thread: 283.46ft  
 Total bobbin: 103.54ft

Stop Sequence:

#	N#	Color	St.	Code	Name	Chart
1.	2		2,841		R255 G195 B55	
2.	12		5,737	12	Orange	Default
3.	8		1,428	8	Black	Default
4.	3		1,292		R240 G27 B94	
5.	1		340		R255 G155 B172	
6.	9		1,022	9	White	Default
7.	4		1,376		R240 G92 B109	
8.	5		1,302		R221 G255 B237	
9.	10		237		R0 G102 B0	
10.	6		495		R255 G229 B111	



# Production Worksheet

Wilcom EmbroideryStudio - Designing



Design: **5**

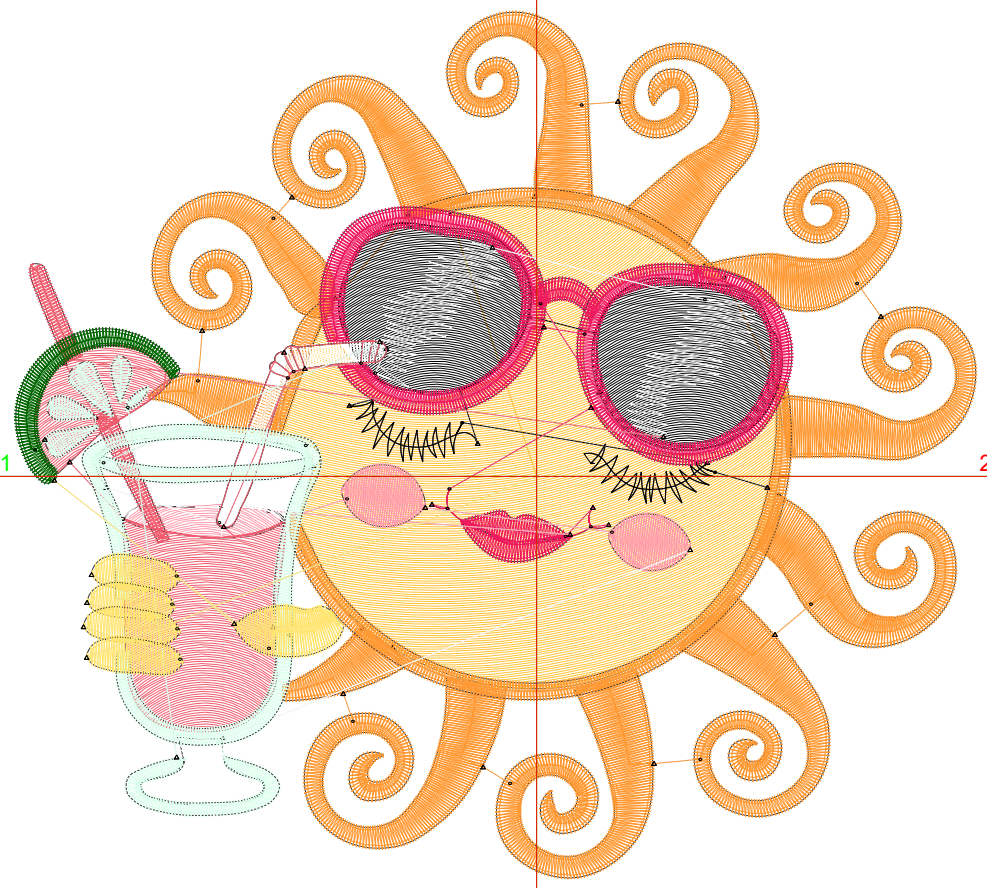
Title:

Stitches: 18,408  
Height: 4.52 in  
Width: 5.01 in  
Colors: 10  
Colorway: Colorway 1  
Zoom: 1:1

Machine format: Tajima  
Color changes: 9  
Stops: 10  
Trims: 51  
Appliqués: 0  
Left: 69.1 mm  
Right: 58.2 mm  
Up: 61.6 mm  
Down: 53.3 mm  
EndX: 0.00 in  
EndY: 0.00 in  
Area: 22.67 in<sup>2</sup>  
Max stitch: 11.8 mm  
Min stitch: 0.0 mm  
Max jump: 6.9 mm  
Total thread: 337.45ft  
Total bobbin: 126.45ft

Stop Sequence:

#	N#	Color	St.	Code	Name	Chart
1.	2		3,478		R255 G195 B55	
2.	12		6,374	12	Orange	Default
3.	8		1,697	8	Black	Default
4.	3		1,451		R240 G27 B94	
5.	1		379		R255 G155 B172	
6.	9		1,144	9	White	Default
7.	4		1,618		R240 G92 B109	
8.	5		1,449		R221 G255 B237	
9.	10		264		R0 G102 B0	
10.	6		552		R255 G229 B111	



# Production Worksheet

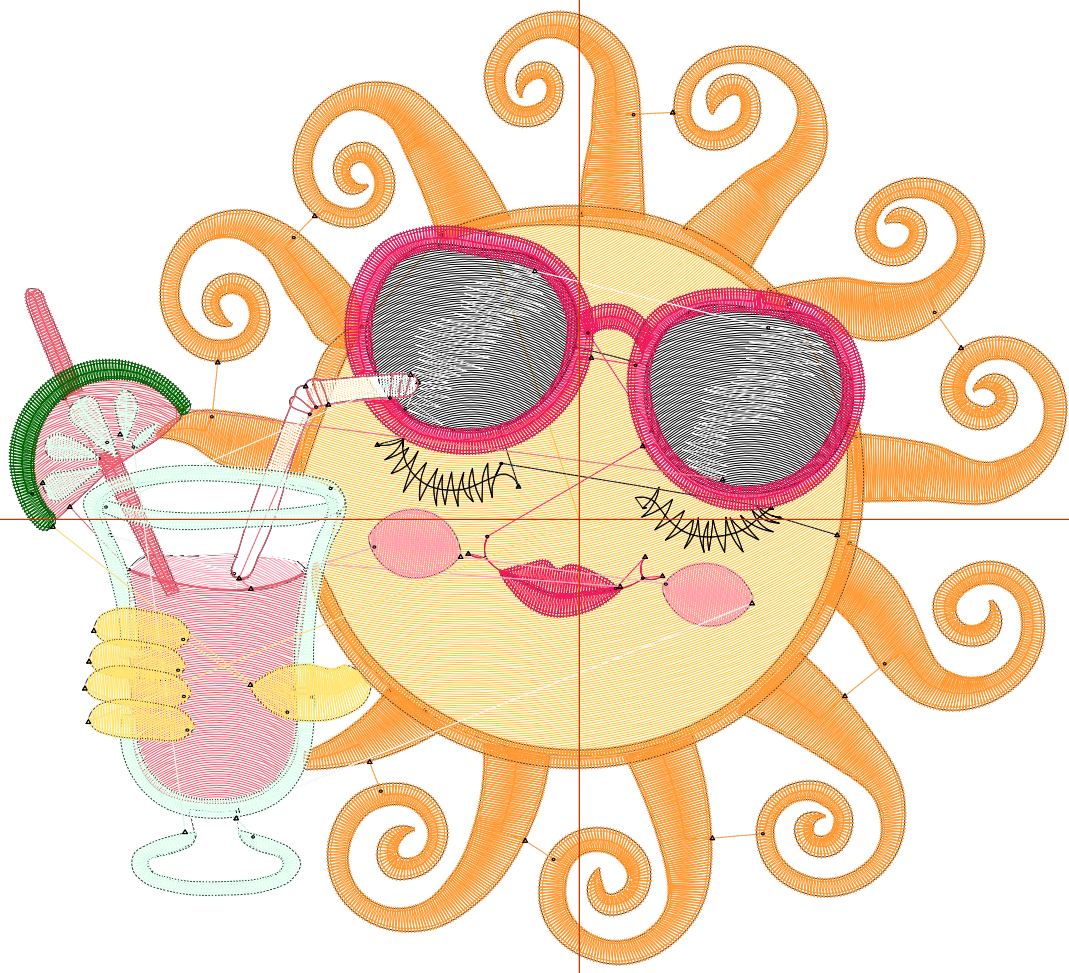
Wilcom EmbroideryStudio - Designing



Design: **5**

Title:

Stitches: 20,772  
Height: 4.97 in  
Width: 5.51 in  
Colors: 10  
Colorway: Colorway 1  
Zoom: 1:1



# Production Worksheet

Wilcom EmbroideryStudio - Designing



Design: **5**

Title:

Stitches: 20,772  
 Height: 4.97 in  
 Width: 5.51 in  
 Colors: 10  
 Colorway: Colorway 1  
 Zoom: 1:1

Machine format: Tajima  
 Color changes: 9  
 Stops: 10  
 Trims: 54  
 Appliqués: 0  
 Left: 75.4 mm  
 Right: 64.6 mm  
 Up: 67.3 mm  
 Down: 59.0 mm  
 EndX: 0.00 in  
 EndY: 0.00 in  
 Area 27.41 in<sup>2</sup>  
 Max stitch: 9.8 mm  
 Min stitch: 0.0 mm  
 Max jump: 6.8 mm  
 Total thread: 395.68ft  
 Total bobbin: 151.76ft

Stop Sequence:

#	N#	Color	St.	Code	Name	Chart
1.	2		4,078		R255 G195 B55	
2.	12		7,041	12	Orange	Default
3.	8		1,992	8	Black	Default
4.	3		1,605		R240 G27 B94	
5.	1		414		R255 G155 B172	
6.	9		1,313	9	White	Default
7.	4		1,819		R240 G92 B109	
8.	5		1,604		R221 G255 B237	
9.	10		289		R0 G102 B0	
10.	6		615		R255 G229 B111	

# Production Worksheet

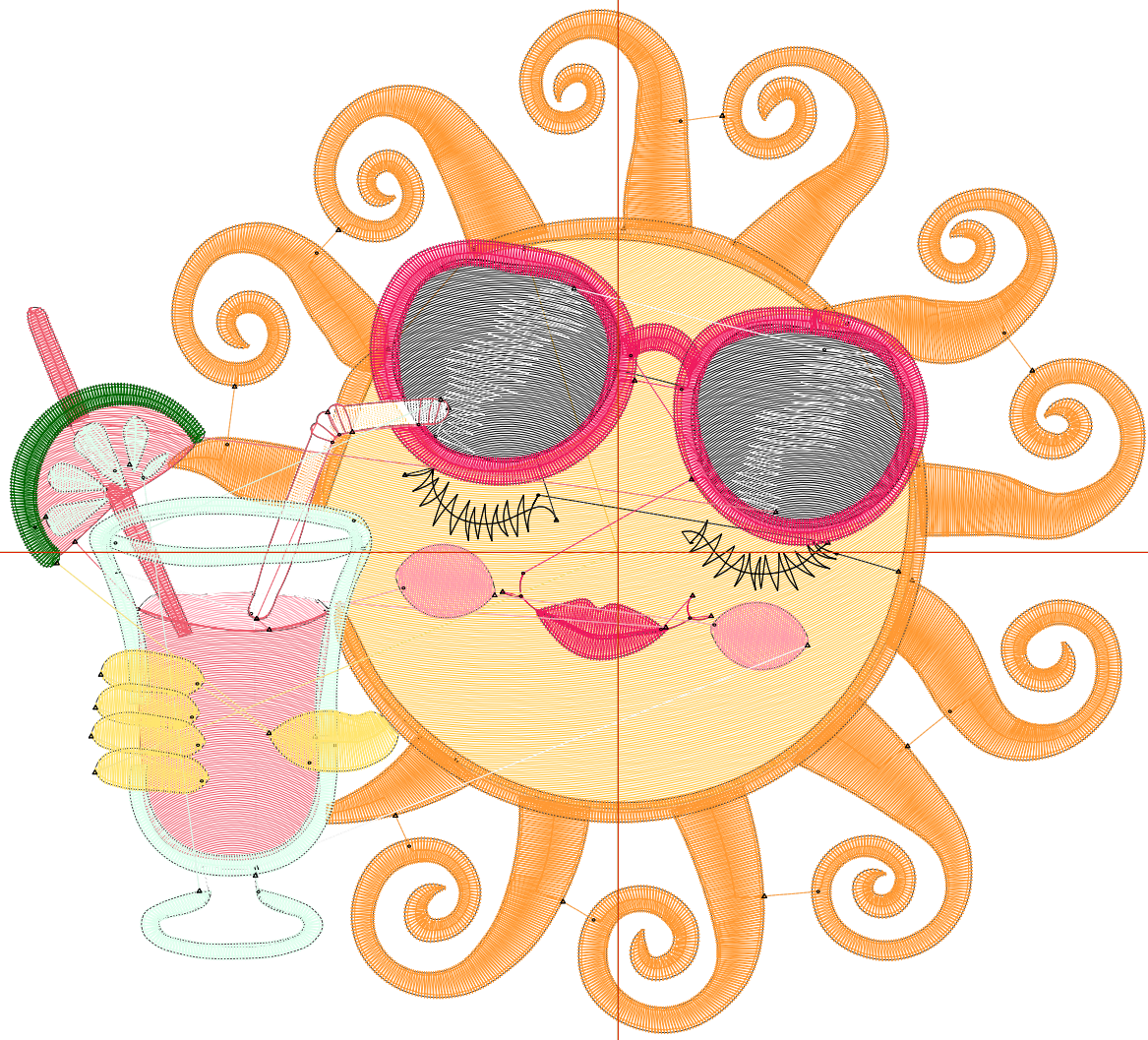
Wilcom EmbroideryStudio - Designing



Design: **6**

Title:

Stitches: 23,516  
Height: 5.42 in  
Width: 6.01 in  
Colors: 10  
Colorway: Colorway 1  
Zoom: 1:1



# Production Worksheet

Wilcom EmbroideryStudio - Designing



Design: **6**

Title:

Stitches: 23,516  
 Height: 5.42 in  
 Width: 6.01 in  
 Colors: 10  
 Colorway: Colorway 1  
 Zoom: 1:1

Machine format: Tajima  
 Color changes: 9  
 Stops: 10  
 Trims: 54  
 Appliqués: 0  
 Left: 81.8 mm  
 Right: 70.9 mm  
 Up: 73.0 mm  
 Down: 64.7 mm  
 EndX: 0.00 in  
 EndY: 0.00 in  
 Area 32.61 in<sup>2</sup>  
 Max stitch: 10.7 mm  
 Min stitch: 0.0 mm  
 Max jump: 7.0 mm  
 Total thread: 461.45ft  
 Total bobbin: 180.07ft

Stop Sequence:

#	N#	Color	St.	Code	Name	Chart
1.	2		4,909		R255 G195 B55	
2.	12		7,715	12	Orange	Default
3.	8		2,290	8	Black	Default
4.	3		1,757		R240 G27 B94	
5.	1		451		R255 G155 B172	
6.	9		1,463	9	White	Default
7.	4		2,180		R240 G92 B109	
8.	5		1,762		R221 G255 B237	
9.	10		318		R0 G102 B0	
10.	6		669		R255 G229 B111	

# Production Worksheet

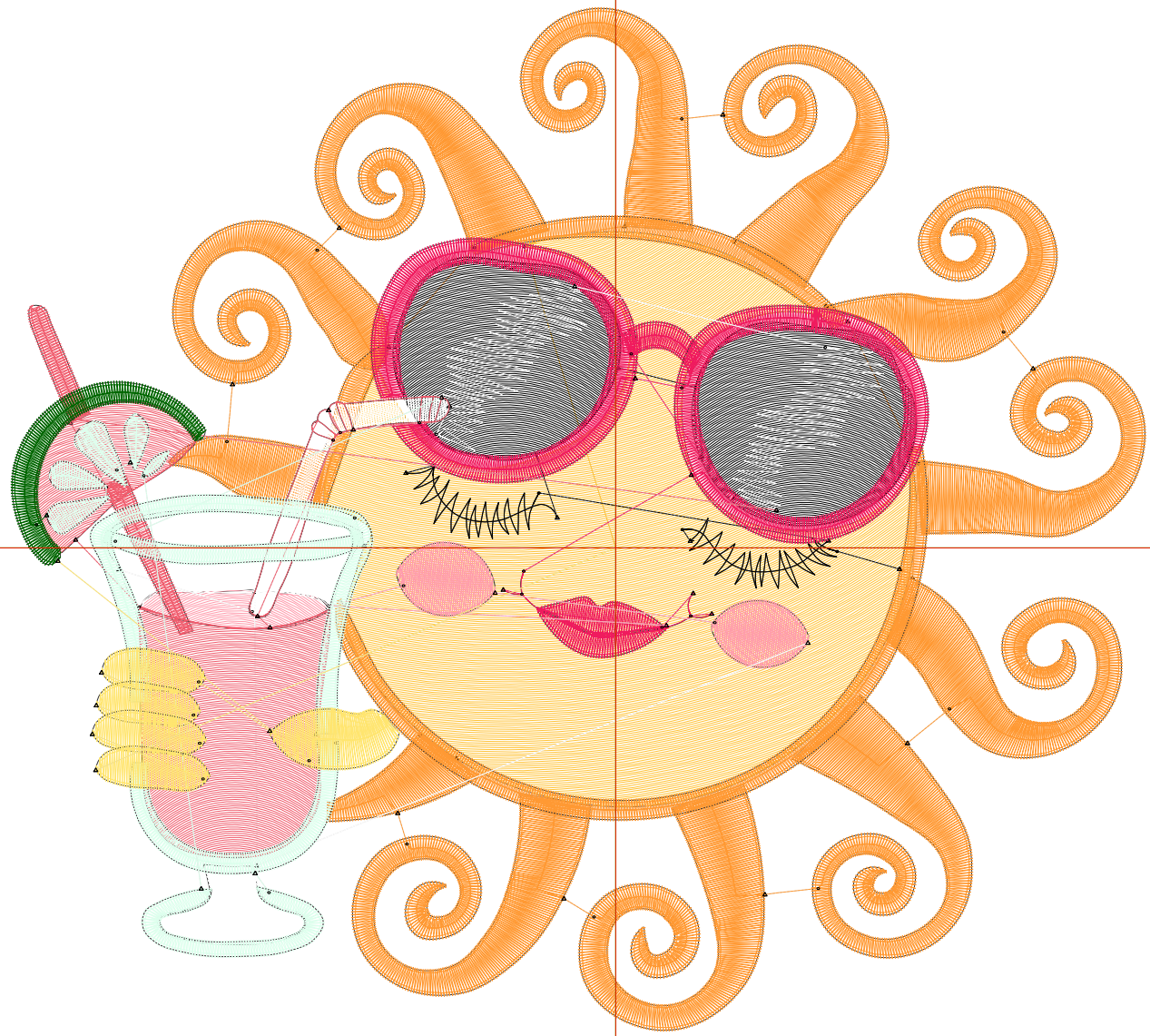
Wilcom EmbroideryStudio - Designing



Design: **6**

Title:

Stitches: 26,145  
Height: 5.87 in  
Width: 6.51 in  
Colors: 10  
Colorway: Colorway 1  
Zoom: 1:1



# Production Worksheet

Wilcom EmbroideryStudio - Designing



Design: **6**

Title:

Stitches: 26,145  
 Height: 5.87 in  
 Width: 6.51 in  
 Colors: 10  
 Colorway: Colorway 1  
 Zoom: 1:1

Machine format: Tajima  
 Color changes: 9  
 Stops: 10  
 Trims: 55  
 Appliqués: 0  
 Left: 88.1 mm  
 Right: 77.3 mm  
 Up: 78.7 mm  
 Down: 70.5 mm  
 EndX: 0.00 in  
 EndY: 0.00 in  
 Area 38.26 in<sup>2</sup>  
 Max stitch: 11.5 mm  
 Min stitch: 0.0 mm  
 Max jump: 6.9 mm  
 Total thread: 529.15ft  
 Total bobbin: 209.97ft

Stop Sequence:

#	N#	Color	St.	Code	Name	Chart
1.	2		5,671		R255 G195 B55	
2.	12		8,380	12	Orange	Default
3.	8		2,635	8	Black	Default
4.	3		1,905		R240 G27 B94	
5.	1		502		R255 G155 B172	
6.	9		1,624	9	White	Default
7.	4		2,448		R240 G92 B109	
8.	5		1,913		R221 G255 B237	
9.	10		346		R0 G102 B0	
10.	6		719		R255 G229 B111	

# Production Worksheet

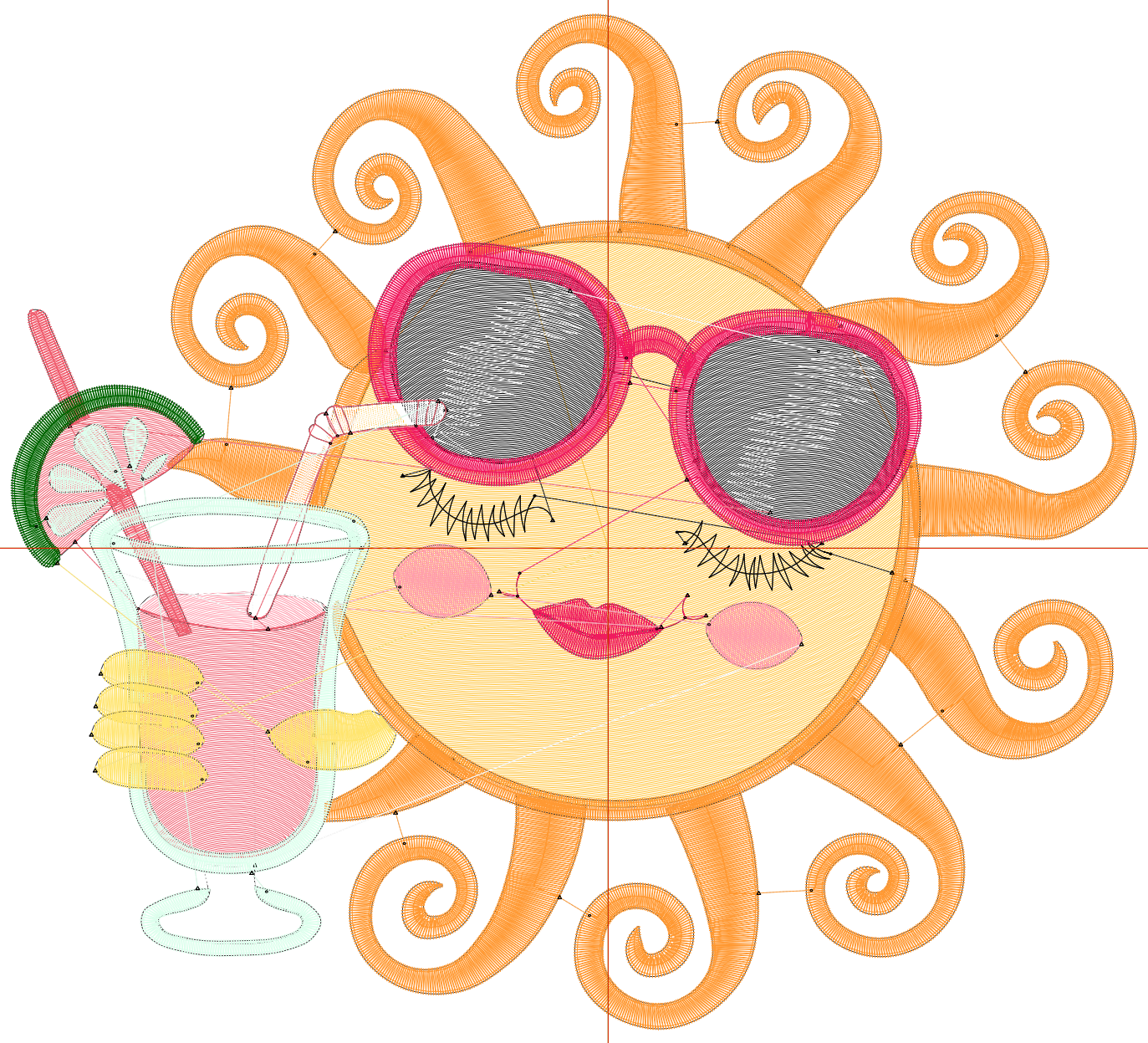
Wilcom EmbroideryStudio - Designing



Design: **7**

Title:

Stitches: 28,985  
Height: 6.33 in  
Width: 7.01 in  
Colors: 10  
Colorway: Colorway 1  
Zoom: 1:1



# Production Worksheet

Wilcom EmbroideryStudio - Designing



Design: **7**

Title:

Stitches: 28,985  
 Height: 6.33 in  
 Width: 7.01 in  
 Colors: 10  
 Colorway: Colorway 1  
 Zoom: 1:1

Machine format: Tajima  
 Color changes: 9  
 Stops: 10  
 Trims: 55  
 Appliqués: 0  
 Left: 94.5 mm  
 Right: 83.6 mm  
 Up: 84.5 mm  
 Down: 76.2 mm  
 EndX: 0.00 in  
 EndY: 0.00 in  
 Area 44.36 in<sup>2</sup>  
 Max stitch: 12.1 mm  
 Min stitch: 0.0 mm  
 Max jump: 6.9 mm  
 Total thread: 602.58ft  
 Total bobbin: 242.44ft

Stop Sequence:

#	N#	Color	St.	Code	Name	Chart
1.	2		6,527		R255 G195 B55	
2.	12		9,047	12	Orange	Default
3.	8		2,982	8	Black	Default
4.	3		2,062		R240 G27 B94	
5.	1		547		R255 G155 B172	
6.	9		1,805	9	White	Default
7.	4		2,787		R240 G92 B109	
8.	5		2,074		R221 G255 B237	
9.	10		376		R0 G102 B0	
10.	6		776		R255 G229 B111	

# Production Worksheet

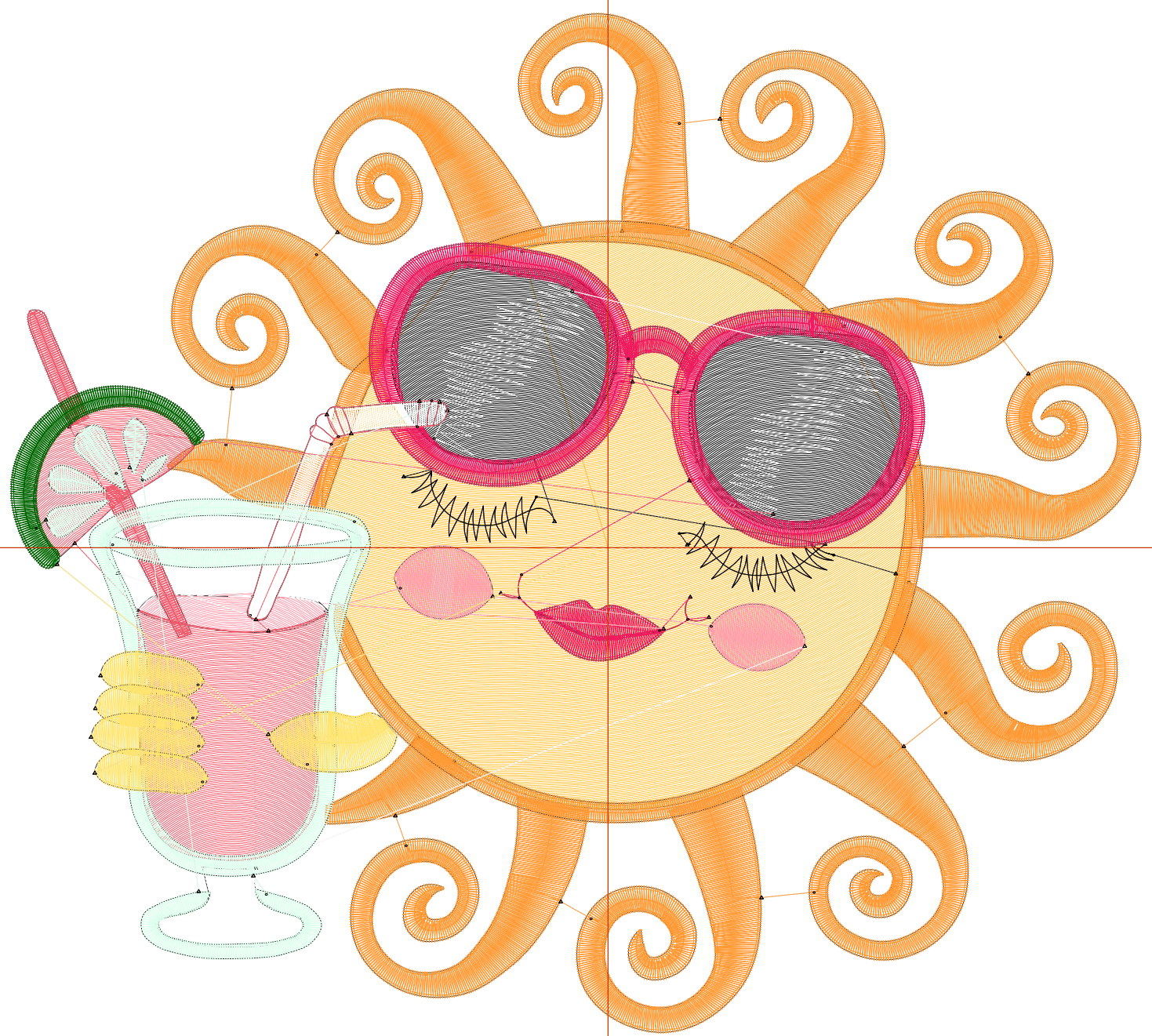
Wilcom EmbroideryStudio - Designing



Design: **7**

Title:

Stitches: 31,867  
Height: 6.78 in  
Width: 7.51 in  
Colors: 10  
Colorway: Colorway 1  
Zoom: 1:1



# Production Worksheet

Wilcom EmbroideryStudio - Designing



Design: **7**

Title:

Stitches: 31,867  
 Height: 6.78 in  
 Width: 7.51 in  
 Colors: 10  
 Colorway: Colorway 1  
 Zoom: 1:1

Machine format: Tajima  
 Color changes: 9  
 Stops: 10  
 Trims: 56  
 Appliqués: 0  
 Left: 100.8 mm  
 Right: 90.0 mm  
 Up: 90.2 mm  
 Down: 81.9 mm  
 EndX: 0.00 in  
 EndY: 0.00 in  
 Area 50.91 in<sup>2</sup>  
 Max stitch: 12.1 mm  
 Min stitch: 0.0 mm  
 Max jump: 7.0 mm  
 Total thread: 679.53ft  
 Total bobbin: 276.83ft

Stop Sequence:

#	N#	Color	St.	Code	Name	Chart
1.	2		7,296		R255 G195 B55	
2.	12		9,782	12	Orange	Default
3.	8		3,356	8	Black	Default
4.	3		2,225		R240 G27 B94	
5.	1		623		R255 G155 B172	
6.	9		1,989	9	White	Default
7.	4		3,132		R240 G92 B109	
8.	5		2,227		R221 G255 B237	
9.	10		406		R0 G102 B0	
10.	6		829		R255 G229 B111	