

Production Worksheet

Wilcom EmbroideryStudio - Designing



Design: **3**

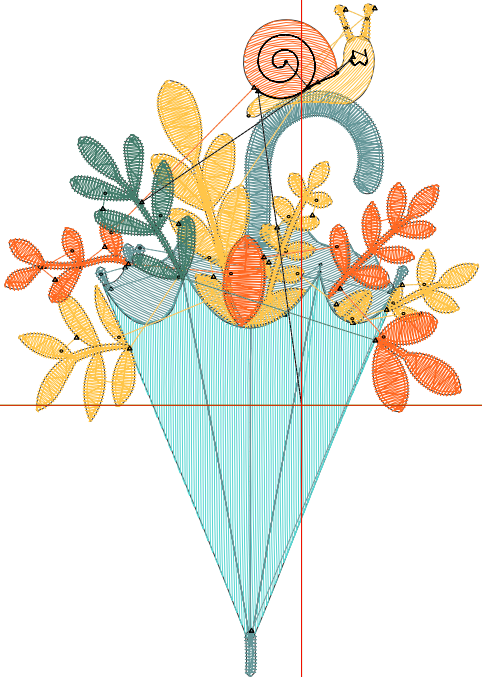
Title:

Stitches: 6,892
 Height: 3.50 in
 Width: 2.47 in
 Colors: 6
 Colorway: Colorway 1
 Zoom: 1:1

Machine format: Tajima
 Color changes: 5
 Stops: 6
 Trims: 35
 Appliqués: 0
 Left: 39.3 mm
 Right: 23.5 mm
 Up: 53.1 mm
 Down: 35.8 mm
 EndX: 0.00 in
 EndY: 0.00 in
 Area: 8.64 in²
 Max stitch: 6.9 mm
 Min stitch: 0.0 mm
 Max jump: 6.9 mm
 Total thread: 105.73ft
 Total bobbin: 34.69ft

Stop Sequence:

#	N#	Color	St.	Code	Name	Chart
1.	6		963		R87 G214 B210	
2.	1		1,374		R101 G151 B153	
3.	2		2,364		R255 G197 B73	
4.	3		1,399		R255 G105 B35	
5.	5		598		R67 G125 B108	
6.	8		192	8	Black	Default



Production Worksheet

Wilcom EmbroideryStudio - Designing



Design: **4**

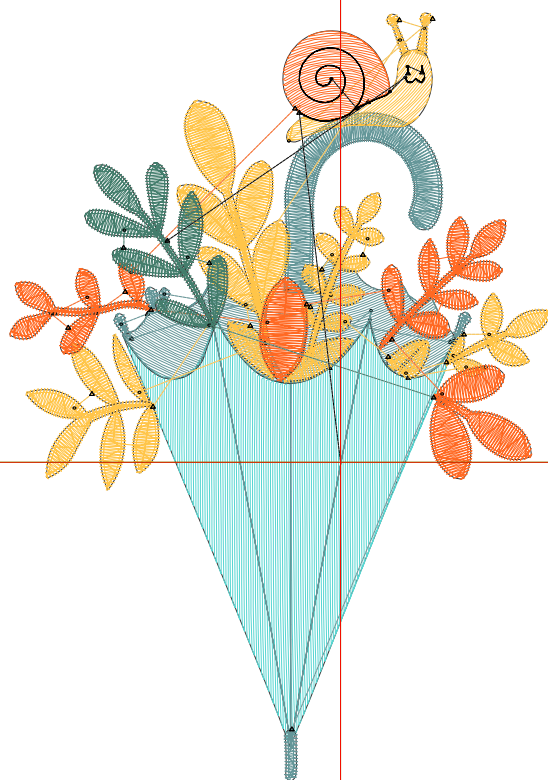
Title:

Stitches: 7,990
Height: 4.00 in
Width: 2.82 in
Colors: 6
Colorway: Colorway 1
Zoom: 1:1

Machine format: Tajima
Color changes: 5
Stops: 6
Trims: 36
Appliqués: 0
Left: 43.7 mm
Right: 27.9 mm
Up: 59.4 mm
Down: 42.2 mm
EndX: 0.00 in
EndY: 0.00 in
Area: 11.29 in²
Max stitch: 7.7 mm
Min stitch: 0.0 mm
Max jump: 6.9 mm
Total thread: 128.60ft
Total bobbin: 43.97ft

Stop Sequence:

#	N#	Color	St.	Code	Name	Chart
1.	6		1,203		R87 G214 B210	
2.	1		1,596		R101 G151 B153	
3.	2		2,678		R255 G197 B73	
4.	3		1,620		R255 G105 B35	
5.	5		675		R67 G125 B108	
6.	8		216	8	Black	Default



Production Worksheet

Wilcom EmbroideryStudio - Designing



Design: **4**

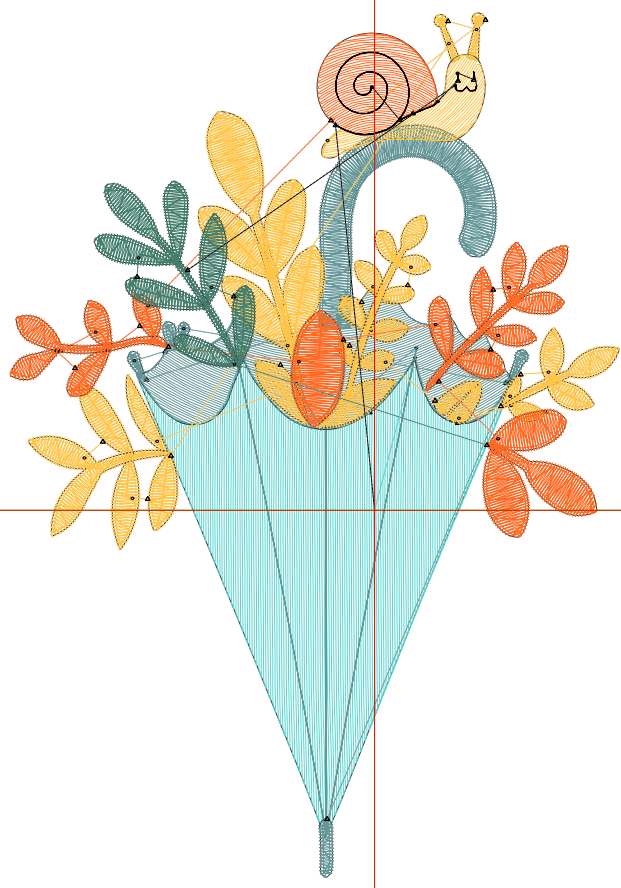
Title:

Stitches: 9,133
 Height: 4.50 in
 Width: 3.17 in
 Colors: 6
 Colorway: Colorway 1
 Zoom: 1:1

Machine format: Tajima
 Color changes: 5
 Stops: 6
 Trims: 39
 Appliqués: 0
 Left: 48.2 mm
 Right: 32.4 mm
 Up: 65.8 mm
 Down: 48.5 mm
 EndX: 0.00 in
 EndY: 0.00 in
 Area: 14.28 in²
 Max stitch: 7.3 mm
 Min stitch: 0.0 mm
 Max jump: 6.8 mm
 Total thread: 153.85ft
 Total bobbin: 54.49ft

Stop Sequence:

#	N#	Color	St.	Code	Name	Chart
1.	6		1,488		R87 G214 B210	
2.	1		1,809		R101 G151 B153	
3.	2		3,008		R255 G197 B73	
4.	3		1,846		R255 G105 B35	
5.	5		747		R67 G125 B108	
6.	8		233	8	Black	Default



Production Worksheet

Wilcom EmbroideryStudio - Designing



Design: **5**

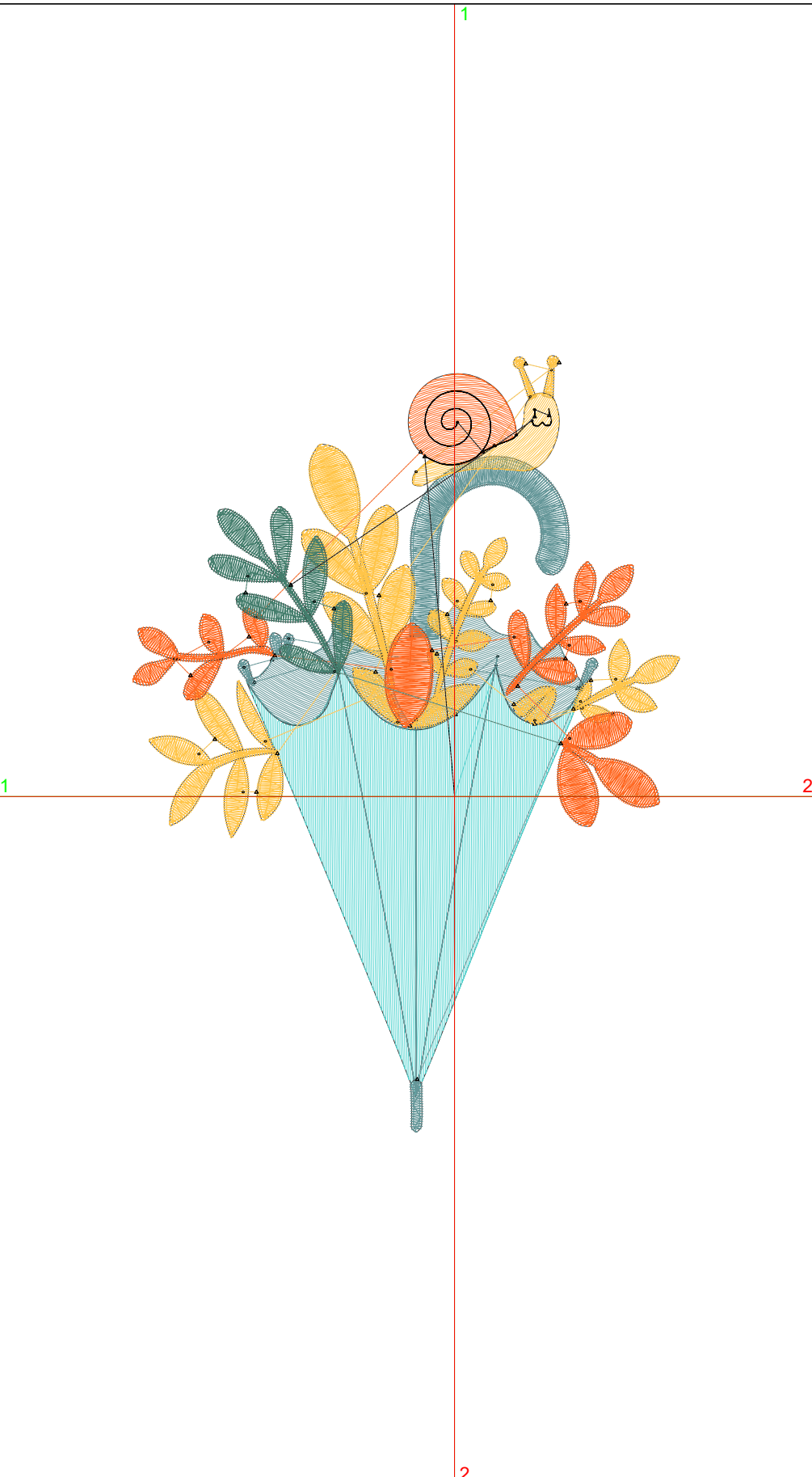
Title:

Stitches: 10,388
 Height: 5.00 in
 Width: 3.53 in
 Colors: 6
 Colorway: Colorway 1
 Zoom: 1:1

Machine format: Tajima
 Color changes: 5
 Stops: 6
 Trims: 41
 Appliqués: 0
 Left: 52.7 mm
 Right: 36.9 mm
 Up: 72.1 mm
 Down: 54.9 mm
 EndX: 0.00 in
 EndY: 0.00 in
 Area: 17.63 in²
 Max stitch: 8.0 mm
 Min stitch: 0.0 mm
 Max jump: 7.0 mm
 Total thread: 182.47ft
 Total bobbin: 66.57ft

Stop Sequence:

#	N#	Color	St.	Code	Name	Chart
1.	6		1,780		R87 G214 B210	
2.	1		2,092		R101 G151 B153	
3.	2		3,374		R255 G197 B73	
4.	3		2,066		R255 G105 B35	
5.	5		832		R67 G125 B108	
6.	8		242	8	Black	Default



Production Worksheet

Wilcom EmbroideryStudio - Designing



Design: **5**

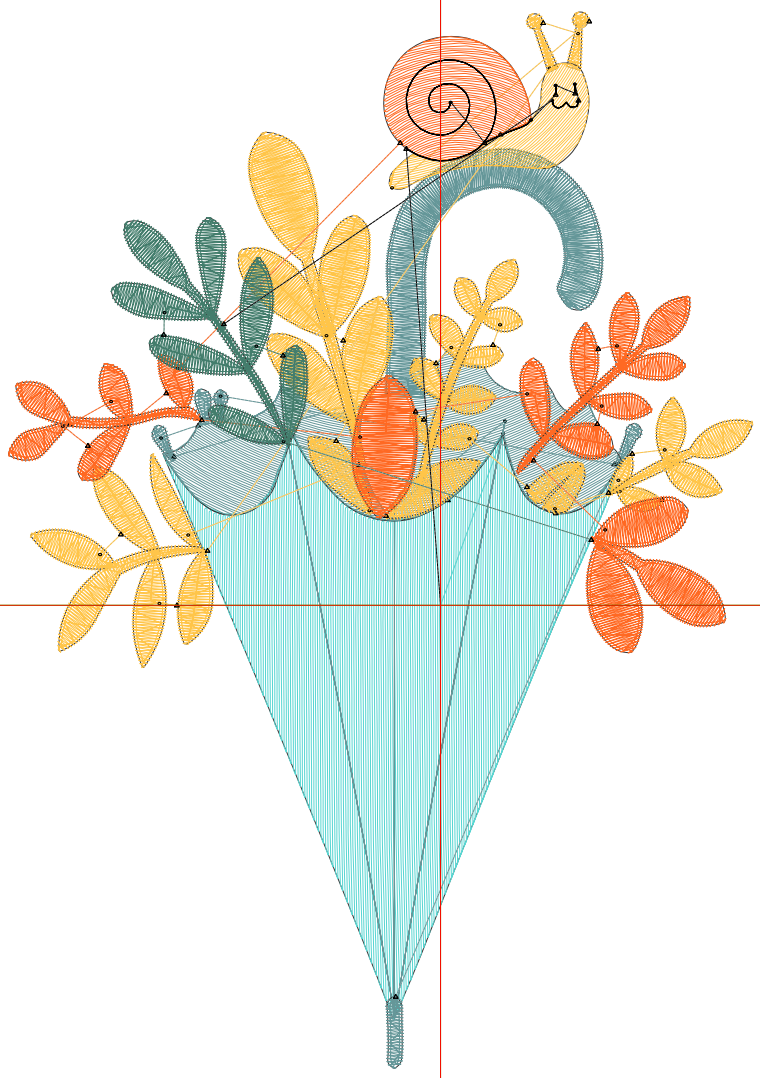
Title:

Stitches: 11,641
 Height: 5.50 in
 Width: 3.88 in
 Colors: 6
 Colorway: Colorway 1
 Zoom: 1:1

Machine format: Tajima
 Color changes: 5
 Stops: 6
 Trims: 42
 Appliqués: 0
 Left: 57.2 mm
 Right: 41.3 mm
 Up: 78.5 mm
 Down: 61.2 mm
 EndX: 0.00 in
 EndY: 0.00 in
 Area: 21.33 in²
 Max stitch: 8.8 mm
 Min stitch: 0.0 mm
 Max jump: 6.8 mm
 Total thread: 212.67ft
 Total bobbin: 79.60ft

Stop Sequence:

#	N#	Color	St.	Code	Name	Chart
1.	6		2,111	R87	G214 B210	
2.	1		2,338	R101	G151 B153	
3.	2		3,725	R255	G197 B73	
4.	3		2,290	R255	G105 B35	
5.	5		915	R67	G125 B108	
6.	8		260	8	Black	Default



Production Worksheet

Wilcom EmbroideryStudio - Designing



Design: **6**

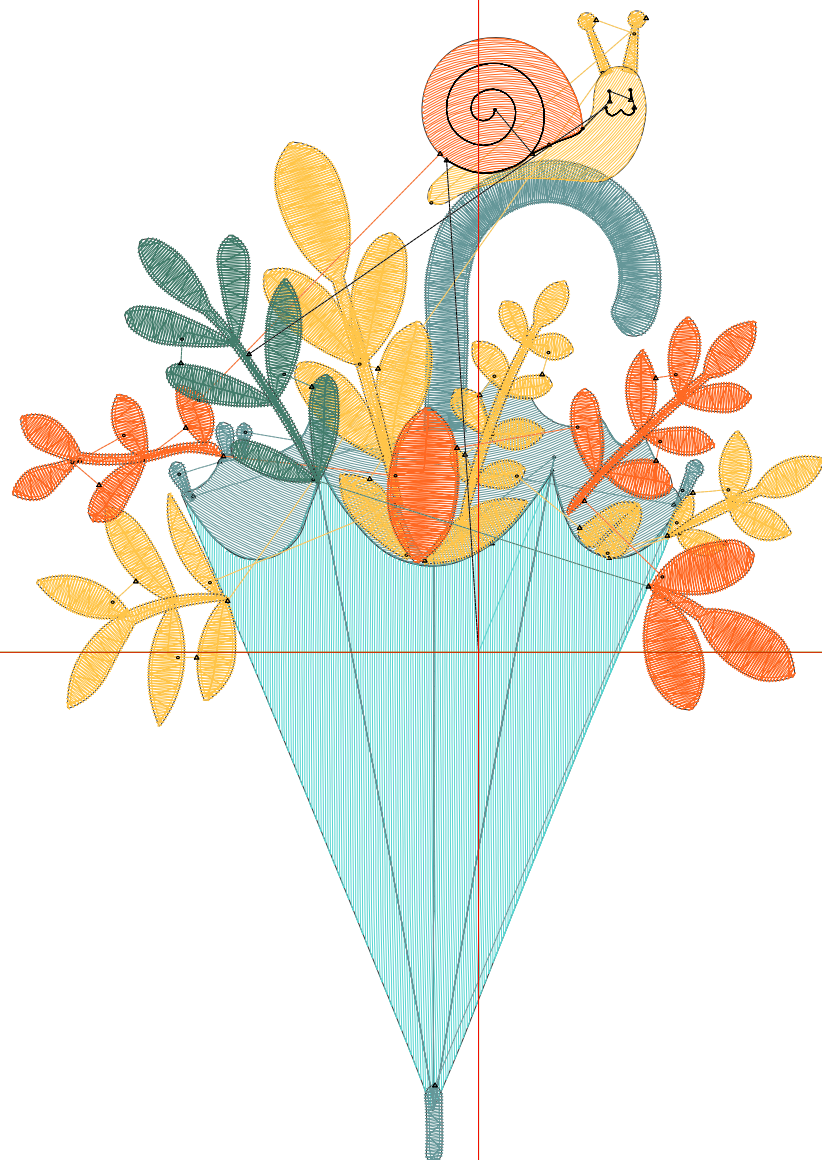
Title:

Stitches: 13,041
 Height: 6.00 in
 Width: 4.23 in
 Colors: 6
 Colorway: Colorway 1
 Zoom: 1:1

Machine format: Tajima
 Color changes: 5
 Stops: 6
 Trims: 42
 Appliqués: 0
 Left: 61.6 mm
 Right: 45.8 mm
 Up: 84.8 mm
 Down: 67.6 mm
 EndX: 0.00 in
 EndY: 0.00 in
 Area: 25.38 in²
 Max stitch: 9.6 mm
 Min stitch: 0.0 mm
 Max jump: 7.0 mm
 Total thread: 246.20ft
 Total bobbin: 94.02ft

Stop Sequence:

#	N#	Color	St.	Code	Name	Chart
1.	6		2,463		R87 G214 B210	
2.	1		2,677		R101 G151 B153	
3.	2		4,082		R255 G197 B73	
4.	3		2,537		R255 G105 B35	
5.	5		1,007		R67 G125 B108	
6.	8		273	8	Black	Default



Production Worksheet

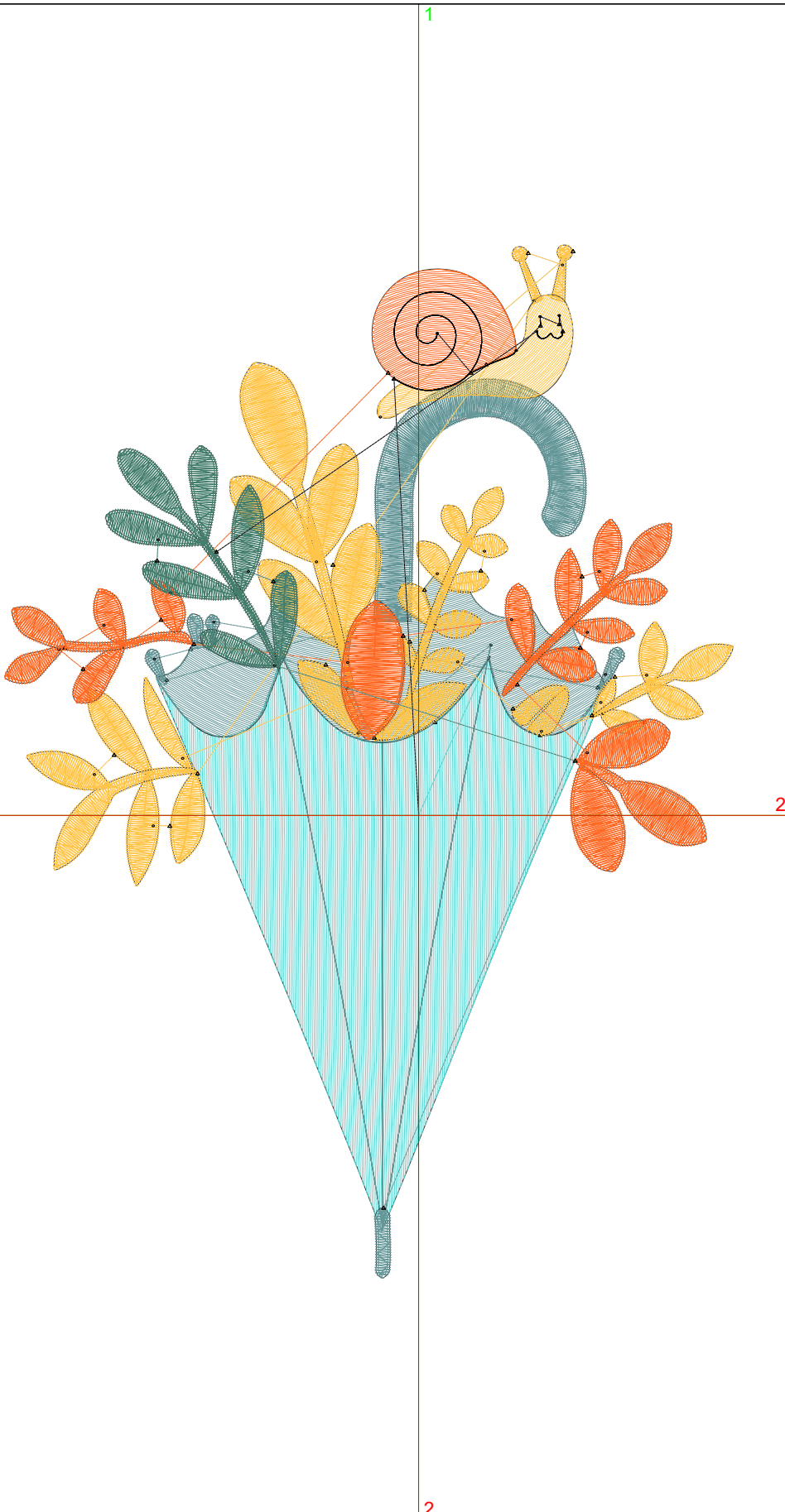
Wilcom EmbroideryStudio - Designing



Design: **6**

Title:

Stitches: 14,379
 Height: 6.50 in
 Width: 4.58 in
 Colors: 6
 Colorway: Colorway 1
 Zoom: 1:1



Machine format: Tajima
 Color changes: 5
 Stops: 6
 Trims: 42
 Appliqués: 0
 Left: 66.1 mm
 Right: 50.3 mm
 Up: 91.2 mm
 Down: 73.9 mm
 EndX: 0.00 in
 EndY: 0.00 in
 Area: 29.78 in²
 Max stitch: 10.3 mm
 Min stitch: 0.0 mm
 Max jump: 7.0 mm
 Total thread: 281.09ft
 Total bobbin: 109.49ft

Stop Sequence:

#	N#	Color	St.	Code	Name	Chart
1.	6		2,851		R87 G214 B210	
2.	1		2,964		R101 G151 B153	
3.	2		4,437		R255 G197 B73	
4.	3		2,748		R255 G105 B35	
5.	5		1,091		R67 G125 B108	
6.	8		286	8	Black	Default

Production Worksheet

Wilcom EmbroideryStudio - Designing



Design: **7**

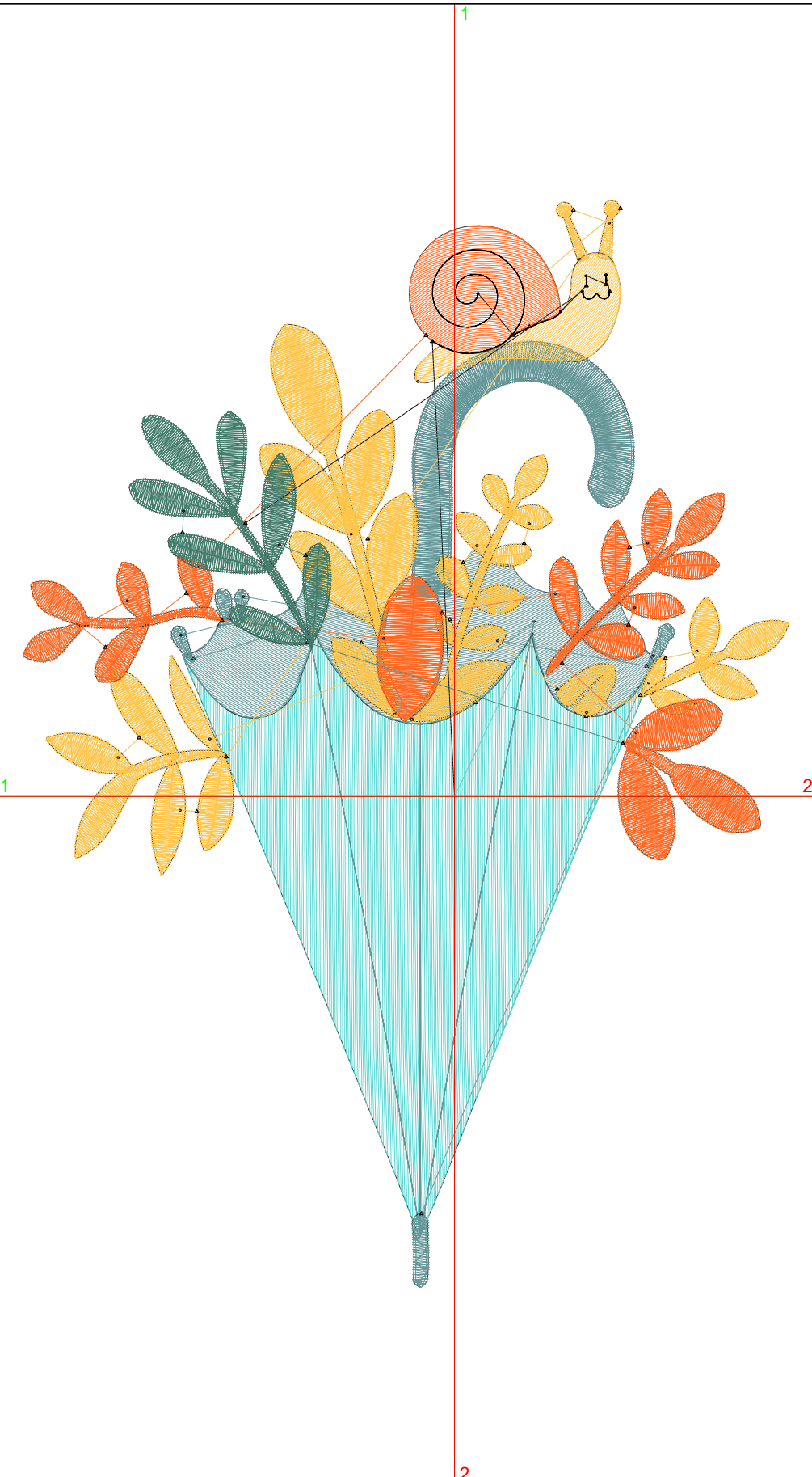
Title:

Stitches: 15,894
 Height: 7.00 in
 Width: 4.93 in
 Colors: 6
 Colorway: Colorway 1
 Zoom: 1:1

Machine format: Tajima
 Color changes: 5
 Stops: 6
 Trims: 42
 Appliqués: 0
 Left: 70.6 mm
 Right: 54.8 mm
 Up: 97.5 mm
 Down: 80.3 mm
 EndX: 0.00 in
 EndY: 0.00 in
 Area: 34.54 in²
 Max stitch: 11.1 mm
 Min stitch: 0.0 mm
 Max jump: 6.9 mm
 Total thread: 319.73ft
 Total bobbin: 126.50ft

Stop Sequence:

#	N#	Color	St.	Code	Name	Chart
1.	6		3,265	R87	G214 B210	
2.	1		3,269	R101	G151 B153	
3.	2		4,832	R255	G197 B73	
4.	3		3,046	R255	G105 B35	
5.	5		1,187	R67	G125 B108	
6.	8		293	8	Black	Default



Production Worksheet

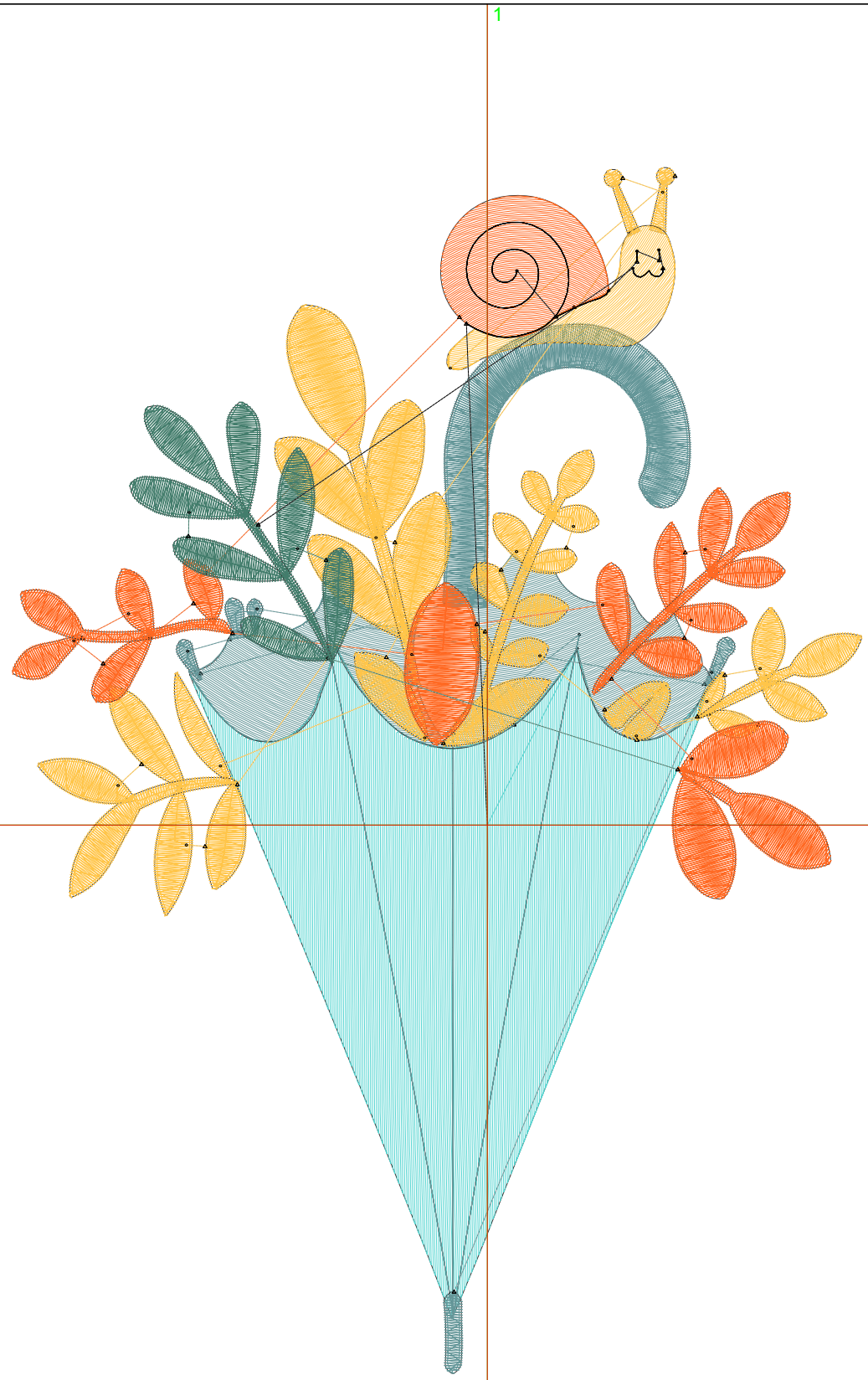
Wilcom EmbroideryStudio - Designing



Design: **7**

Title:

Stitches: 17,410
Height: 7.50 in
Width: 5.29 in
Colors: 6
Colorway: Colorway 1
Zoom: 1:1



Production Worksheet

Wilcom EmbroideryStudio - Designing



Design: **7**

Title:

Stitches: 17,410
 Height: 7.50 in
 Width: 5.29 in
 Colors: 6
 Colorway: Colorway 1
 Zoom: 1:1

Machine format: Tajima
 Color changes: 5
 Stops: 6
 Trims: 42
 Appliqués: 0
 Left: 75.0 mm
 Right: 59.2 mm
 Up: 103.8 mm
 Down: 86.6 mm
 EndX: 0.00 in
 EndY: 0.00 in
 Area 39.65 in²
 Max stitch: 11.9 mm
 Min stitch: 0.0 mm
 Max jump: 7.0 mm
 Total thread: 360.58ft
 Total bobbin: 144.82ft

Stop Sequence:

#	N#	Color	St.	Code	Name	Chart
1.	6		3,700		R87 G214 B210	
2.	1		3,590		R101 G151 B153	
3.	2		5,203		R255 G197 B73	
4.	3		3,319		R255 G105 B35	
5.	5		1,286		R67 G125 B108	
6.	8		310	8	Black	Default