

Production Worksheet

Wilcom EmbroideryStudio - Designing



Design: **3**

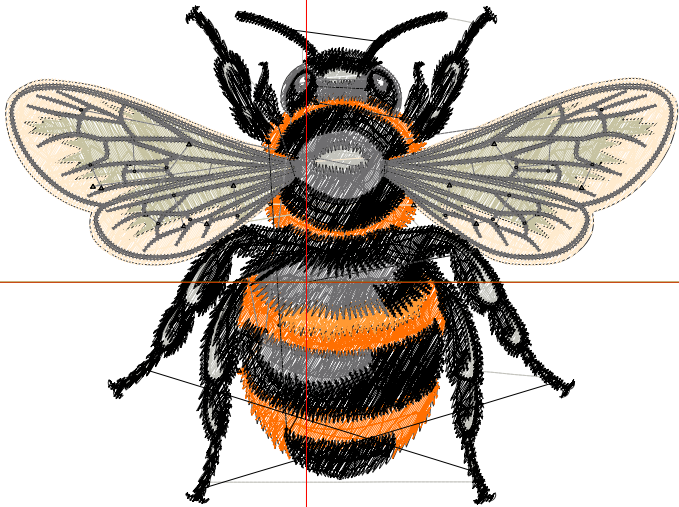
Title:

Stitches: 29,685
Height: 2.60 in
Width: 3.50 in
Colors: 8
Colorway: Colorway 1
Zoom: 1:1

Machine format: Tajima
Color changes: 7
Stops: 8
Trims: 51
Appliqués: 0
Left: 39.8 mm
Right: 49.2 mm
Up: 36.6 mm
Down: 29.4 mm
EndX: 0.00 in
EndY: 0.00 in
Area: 9.10 in²
Max stitch: 11.7 mm
Min stitch: 0.0 mm
Max jump: 6.9 mm
Total thread: 365.96ft
Total bobbin: 99.88ft

Stop Sequence:

#	N#	Color	St.	Code	Name	Chart
1.	2		1,708		R194 G194 B187	
2.	9		50	9	White	Default
3.	1		2,634		R255 G111 B1	
4.	12		674	12	Orange	Default
5.	4		2,631		R199 G195 B162	
6.	8		2,985		R255 G235 B206	
7.	5		7,042		R111 G110 B112	
8.	7		11,959		R0 G0 B0	



Production Worksheet

Wilcom EmbroideryStudio - Designing



Design: **4**

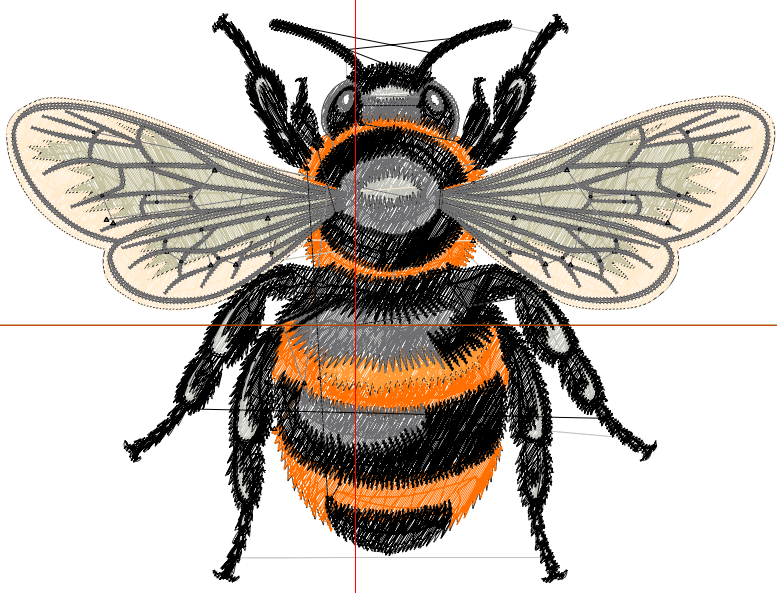
Title:

Stitches: 34,880
Height: 2.97 in
Width: 4.01 in
Colors: 8
Colorway: Colorway 1
Zoom: 1:1

Machine format: Tajima
Color changes: 7
Stops: 8
Trims: 53
Appliqués: 0
Left: 46.2 mm
Right: 55.5 mm
Up: 41.3 mm
Down: 34.1 mm
EndX: 0.00 in
EndY: 0.00 in
Area: 11.88 in²
Max stitch: 10.4 mm
Min stitch: 0.0 mm
Max jump: 7.0 mm
Total thread: 442.04ft
Total bobbin: 124.77ft

Stop Sequence:

#	N#	Color	St.	Code	Name	Chart
1.	2		2,012		R194 G194 B187	
2.	9		63	9	White	Default
3.	1		3,030		R255 G111 B1	
4.	12		785	12	Orange	Default
5.	4		3,099		R199 G195 B162	
6.	8		3,464		R255 G235 B206	
7.	5		8,185		R111 G110 B112	
8.	7		14,240		R0 G0 B0	



Production Worksheet

Wilcom EmbroideryStudio - Designing



Design: **4**

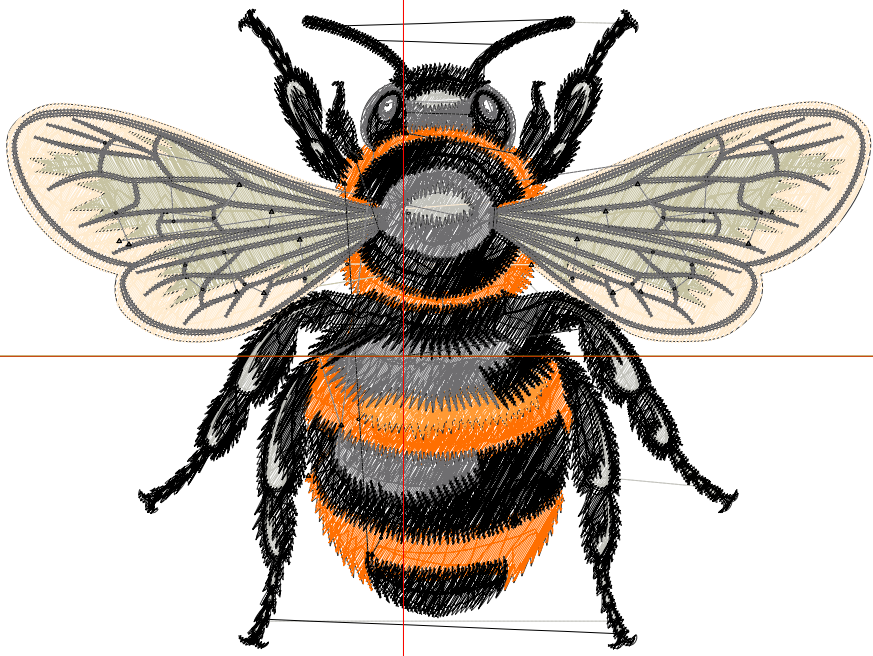
Title:

Stitches: 40,205
Height: 3.33 in
Width: 4.50 in
Colors: 8
Colorway: Colorway 1
Zoom: 1:1

Machine format: Tajima
Color changes: 7
Stops: 8
Trims: 55
Appliqués: 0
Left: 52.5 mm
Right: 61.9 mm
Up: 46.0 mm
Down: 38.8 mm
EndX: 0.00 in
EndY: 0.00 in
Area: 15.02 in²
Max stitch: 11.3 mm
Min stitch: 0.0 mm
Max jump: 7.0 mm
Total thread: 522.52ft
Total bobbin: 151.75ft

Stop Sequence:

#	N#	Color	St.	Code	Name	Chart
1.	2		2,278		R194 G194 B187	
2.	9		64	9	White	Default
3.	1		3,502		R255 G111 B1	
4.	12		900	12	Orange	Default
5.	4		3,606		R199 G195 B162	
6.	8		4,012		R255 G235 B206	
7.	5		9,391		R111 G110 B112	
8.	7		16,450		R0 G0 B0	



Production Worksheet

Wilcom EmbroideryStudio - Designing



Design: **5**

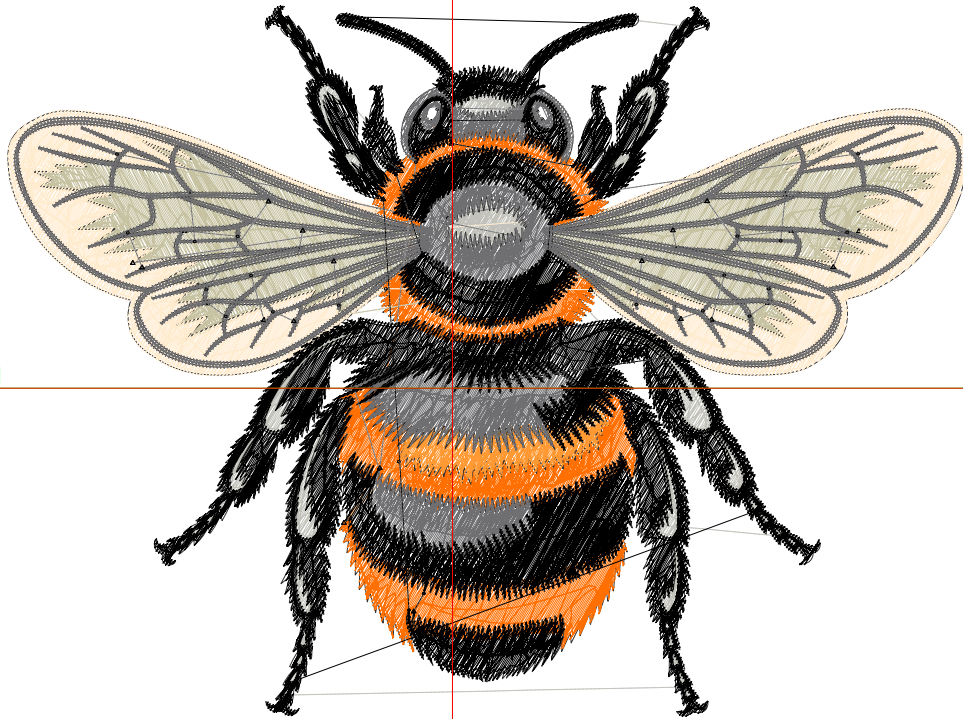
Title:

Stitches: 45,657
Height: 3.70 in
Width: 5.00 in
Colors: 8
Colorway: Colorway 1
Zoom: 1:1

Machine format: Tajima
Color changes: 7
Stops: 8
Trims: 54
Appliqués: 0
Left: 58.9 mm
Right: 68.2 mm
Up: 50.6 mm
Down: 43.4 mm
EndX: 0.00 in
EndY: 0.00 in
Area: 18.53 in²
Max stitch: 11.5 mm
Min stitch: 0.0 mm
Max jump: 7.0 mm
Total thread: 607.18ft
Total bobbin: 180.72ft

Stop Sequence:

#	N#	Color	St.	Code	Name	Chart
1.	2		2,598		R194 G194 B187	
2.	9		73	9	White	Default
3.	1		3,986		R255 G111 B1	
4.	12		986	12	Orange	Default
5.	4		4,170		R199 G195 B162	
6.	8		4,576		R255 G235 B206	
7.	5		10,499		R111 G110 B112	
8.	7		18,767		R0 G0 B0	



Production Worksheet

Wilcom EmbroideryStudio - Designing



Design: **5**

Title:

Stitches: 51,302
Height: 4.07 in
Width: 5.50 in
Colors: 8
Colorway: Colorway 1
Zoom: 1:1



Production Worksheet

Wilcom EmbroideryStudio - Designing



Design: **5**

Title:

Stitches: 51,302
 Height: 4.07 in
 Width: 5.50 in
 Colors: 8
 Colorway: Colorway 1
 Zoom: 1:1

Machine format: Tajima
 Color changes: 7
 Stops: 8
 Trims: 55
 Appliqués: 0
 Left: 65.3 mm
 Right: 74.6 mm
 Up: 55.3 mm
 Down: 48.1 mm
 EndX: 0.00 in
 EndY: 0.00 in
 Area 22.42 in²
 Max stitch: 9.7 mm
 Min stitch: 0.0 mm
 Max jump: 6.9 mm
 Total thread: 696.67ft
 Total bobbin: 211.80ft

Stop Sequence:

#	N#	Color	St.	Code	Name	Chart
1.	2		2,959		R194 G194 B187	
2.	9		84	9	White	Default
3.	1		4,513		R255 G111 B1	
4.	12		1,118	12	Orange	Default
5.	4		4,733		R199 G195 B162	
6.	8		5,174		R255 G235 B206	
7.	5		11,636		R111 G110 B112	
8.	7		21,083		R0 G0 B0	

Production Worksheet

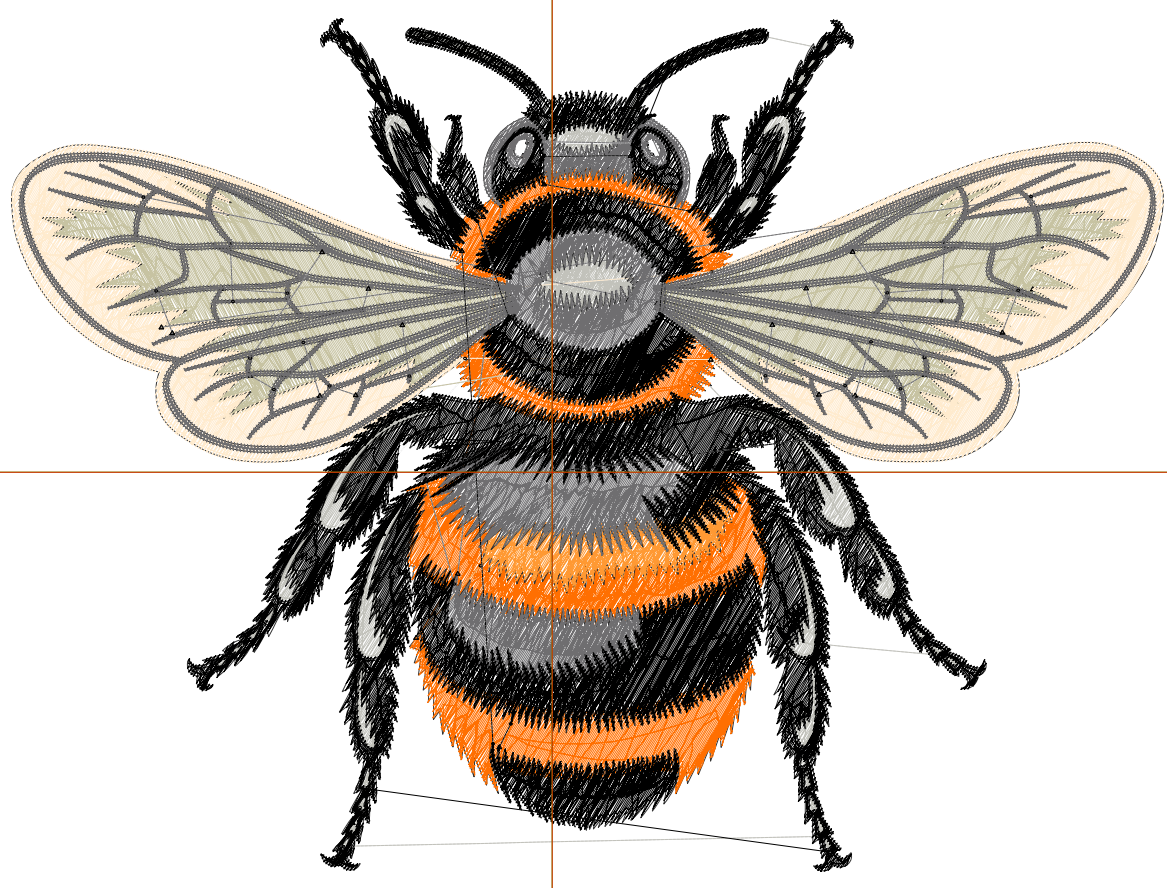
Wilcom EmbroideryStudio - Designing



Design: **6**

Title:

Stitches: 56,507
Height: 4.44 in
Width: 6.00 in
Colors: 8
Colorway: Colorway 1
Zoom: 1:1



Production Worksheet

Wilcom EmbroideryStudio - Designing



Design: **6**

Title:

Stitches: 56,507
 Height: 4.44 in
 Width: 6.00 in
 Colors: 8
 Colorway: Colorway 1
 Zoom: 1:1

Machine format: Tajima
 Color changes: 7
 Stops: 8
 Trims: 57
 Appliqués: 0
 Left: 71.6 mm
 Right: 80.9 mm
 Up: 60.0 mm
 Down: 52.8 mm
 EndX: 0.00 in
 EndY: 0.00 in
 Area 26.67 in²
 Max stitch: 10.2 mm
 Min stitch: 0.0 mm
 Max jump: 6.9 mm
 Total thread: 783.49ft
 Total bobbin: 243.01ft

Stop Sequence:

#	N#	Color	St.	Code	Name	Chart
1.	2		3,278		R194 G194 B187	
2.	9		90	9	White	Default
3.	1		5,009		R255 G111 B1	
4.	12		1,234	12	Orange	Default
5.	4		5,322		R199 G195 B162	
6.	8		5,834		R255 G235 B206	
7.	5		12,828		R111 G110 B112	
8.	7		22,910		R0 G0 B0	

Production Worksheet

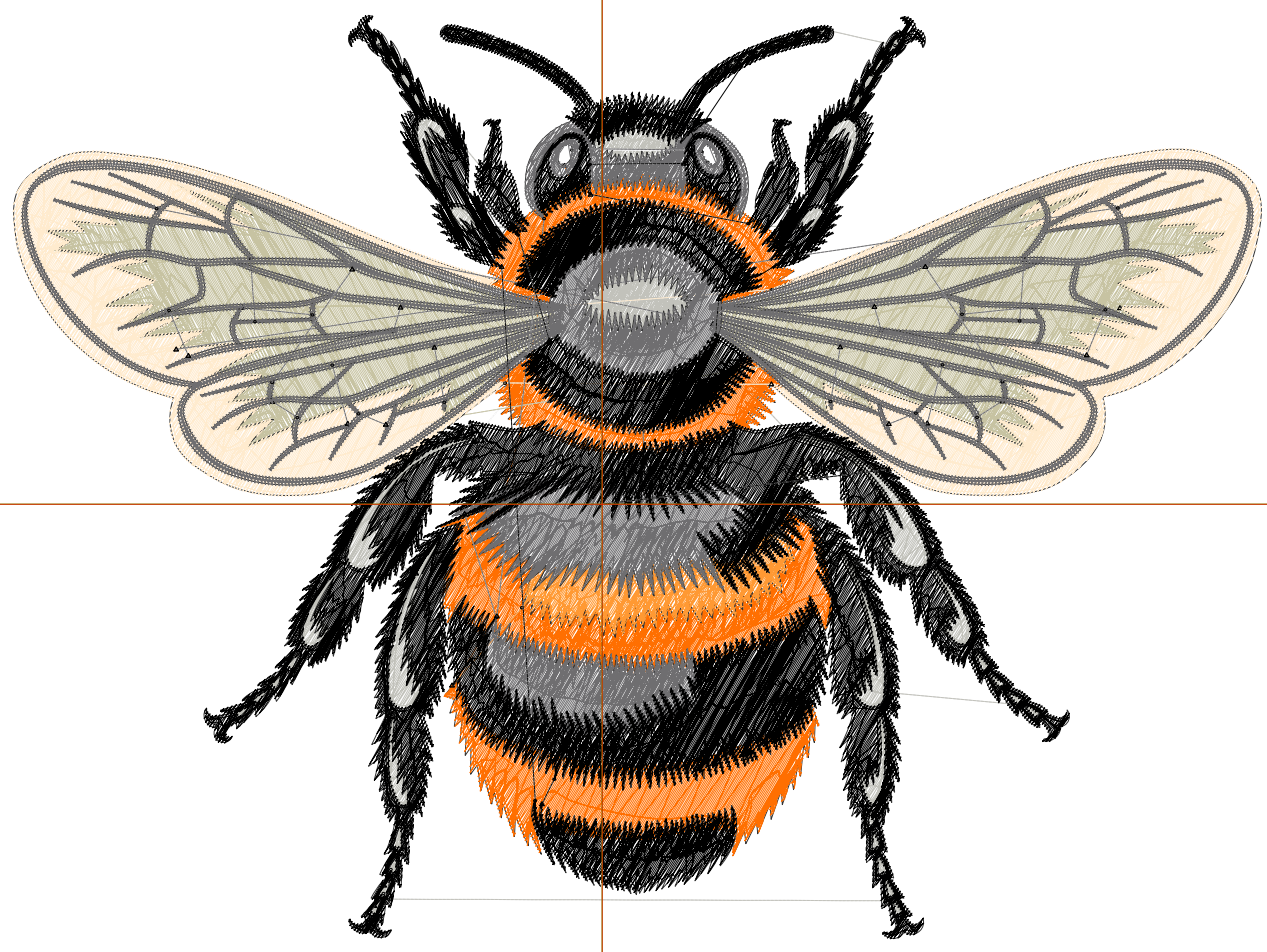
Wilcom EmbroideryStudio - Designing



Design: **6**

Title:

Stitches: 62,587
Height: 4.81 in
Width: 6.50 in
Colors: 8
Colorway: Colorway 1
Zoom: 1:1



Production Worksheet

Wilcom EmbroideryStudio - Designing



Design: **6**

Title:

Stitches: 62,587
 Height: 4.81 in
 Width: 6.50 in
 Colors: 8
 Colorway: Colorway 1
 Zoom: 1:1

Machine format: Tajima
 Color changes: 7
 Stops: 8
 Trims: 58
 Appliqués: 0
 Left: 78.0 mm
 Right: 87.3 mm
 Up: 64.7 mm
 Down: 57.5 mm
 EndX: 0.00 in
 EndY: 0.00 in
 Area 31.30 in²
 Max stitch: 10.8 mm
 Min stitch: 0.0 mm
 Max jump: 6.9 mm
 Total thread: 884.78ft
 Total bobbin: 279.40ft

Stop Sequence:

#	N#	Color	St.	Code	Name	Chart
1.	2		3,622		R194 G194 B187	
2.	9		100	9	White	Default
3.	1		5,577		R255 G111 B1	
4.	12		1,343	12	Orange	Default
5.	4		6,016		R199 G195 B162	
6.	8		6,454		R255 G235 B206	
7.	5		13,976		R111 G110 B112	
8.	7		25,497		R0 G0 B0	

Production Worksheet

Wilcom EmbroideryStudio - Designing



Design: **7**

Title:

Stitches: 68,451
Height: 5.18 in
Width: 7.00 in
Colors: 8
Colorway: Colorway 1
Zoom: 1:1



Production Worksheet

Wilcom EmbroideryStudio - Designing



Design: **7**

Title:

Stitches: 68,451
 Height: 5.18 in
 Width: 7.00 in
 Colors: 8
 Colorway: Colorway 1
 Zoom: 1:1

Machine format: Tajima
 Color changes: 7
 Stops: 8
 Trims: 58
 Appliqués: 0
 Left: 84.3 mm
 Right: 93.6 mm
 Up: 69.4 mm
 Down: 62.2 mm
 EndX: 0.00 in
 EndY: 0.00 in
 Area 36.29 in²
 Max stitch: 11.0 mm
 Min stitch: 0.0 mm
 Max jump: 6.9 mm
 Total thread: 985.83ft
 Total bobbin: 316.47ft

Stop Sequence:

#	N#	Color	St.	Code	Name	Chart
1.	2		3,950		R194 G194 B187	
2.	9		105	9	White	Default
3.	1		6,145		R255 G111 B1	
4.	12		1,472	12	Orange	Default
5.	4		6,651		R199 G195 B162	
6.	8		7,071		R255 G235 B206	
7.	5		15,163		R111 G110 B112	
8.	7		27,892		R0 G0 B0	

Production Worksheet

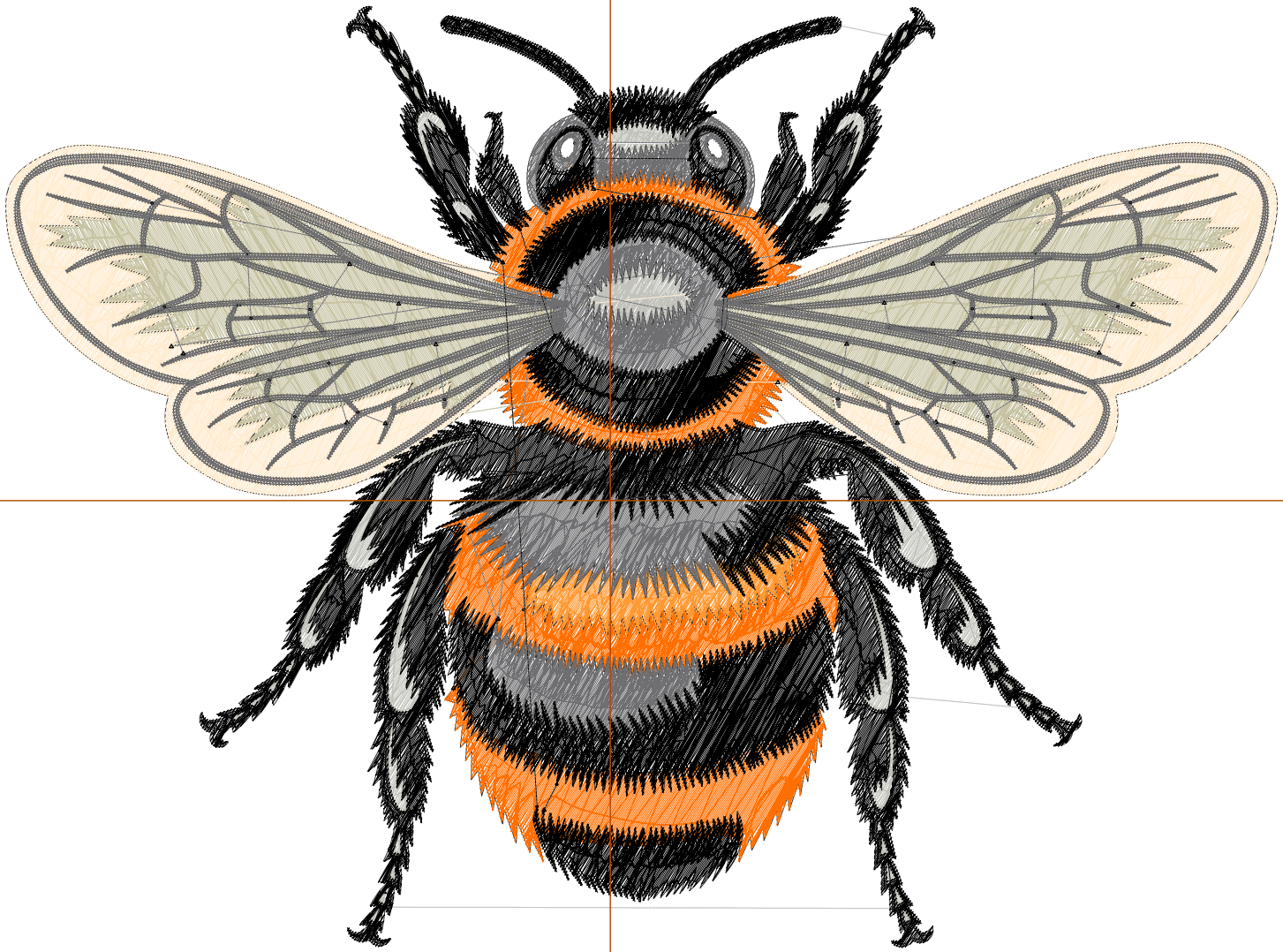
Wilcom EmbroideryStudio - Designing



Design: **7**

Title:

Stitches: 74,344
Height: 5.55 in
Width: 7.50 in
Colors: 8
Colorway: Colorway 1
Zoom: 1:1



Production Worksheet

Wilcom EmbroideryStudio - Designing



Design: **7**

Title:

Stitches: 74,344
 Height: 5.55 in
 Width: 7.50 in
 Colors: 8
 Colorway: Colorway 1
 Zoom: 1:1

Machine format: Tajima
 Color changes: 7
 Stops: 8
 Trims: 60
 Appliqués: 0
 Left: 90.6 mm
 Right: 99.9 mm
 Up: 74.1 mm
 Down: 67.0 mm
 EndX: 0.00 in
 EndY: 0.00 in
 Area 41.67 in²
 Max stitch: 11.7 mm
 Min stitch: 0.0 mm
 Max jump: 7.0 mm
 Total thread: 1088.70ft
 Total bobbin: 354.52ft

Stop Sequence:

#	N#	Color	St.	Code	Name	Chart
1.	2		4,310		R194 G194 B187	
2.	9		111	9	White	Default
3.	1		6,701		R255 G111 B1	
4.	12		1,582	12	Orange	Default
5.	4		7,324		R199 G195 B162	
6.	8		7,777		R255 G235 B206	
7.	5		16,419		R111 G110 B112	
8.	7		30,118		R0 G0 B0	