

# Production Worksheet

Wilcom EmbroideryStudio - Designing



Design: **3**

Title:

Stitches: 14,484  
 Height: 3.51 in  
 Width: 3.02 in  
 Colors: 2  
 Colorway: Colorway 1  
 Zoom: 1:1

Machine format: Tajima  
 Color changes: 1  
 Stops: 2  
 Trims: 40  
 Appliqués: 0  
 Left: 42.4 mm  
 Right: 34.4 mm  
 Up: 44.9 mm  
 Down: 44.3 mm  
 EndX: 0.00 in  
 EndY: 0.00 in  
 Area: 10.62 in<sup>2</sup>  
 Max stitch: 7.0 mm  
 Min stitch: 0.0 mm  
 Max jump: 7.0 mm  
 Total thread: 189.71ft  
 Total bobbin: 55.71ft

Stop Sequence:

#	N#	Color	St.	Code	Name	Chart
1.	8		12,604	8	Black	Default
2.	3		1,878	3	Red	Default



# Production Worksheet

Wilcom EmbroideryStudio - Designing



Design: **4**

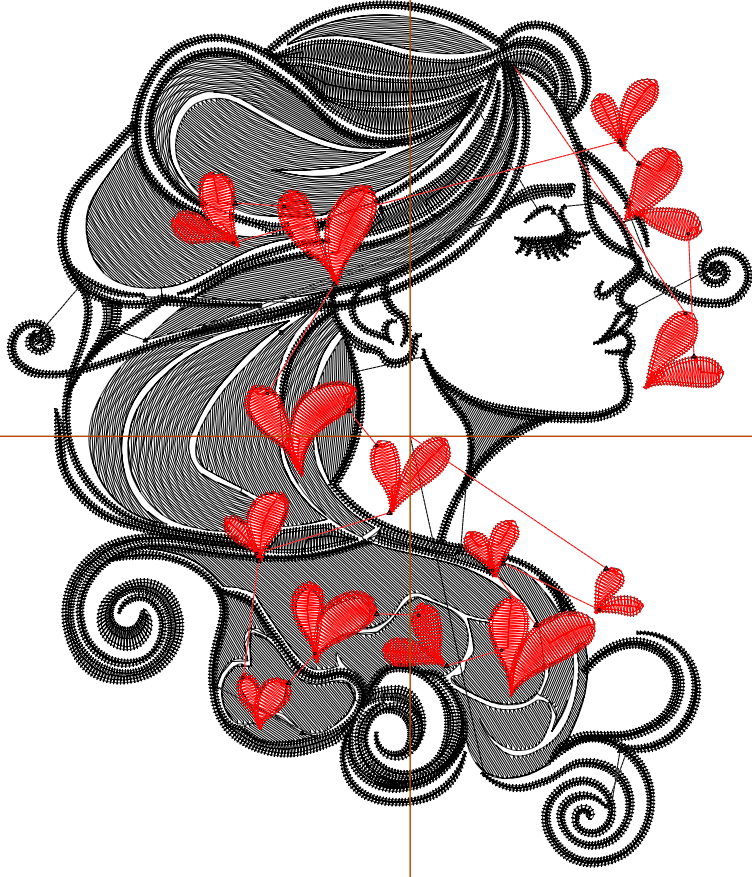
Title:

Stitches: 19,071  
 Height: 4.51 in  
 Width: 3.88 in  
 Colors: 2  
 Colorway: Colorway 1  
 Zoom: 1:1

Machine format: Tajima  
 Color changes: 1  
 Stops: 2  
 Trims: 42  
 Appliqués: 0  
 Left: 53.3 mm  
 Right: 45.3 mm  
 Up: 57.6 mm  
 Down: 57.0 mm  
 EndX: 0.00 in  
 EndY: 0.00 in  
 Area 17.52 in<sup>2</sup>  
 Max stitch: 6.9 mm  
 Min stitch: 0.0 mm  
 Max jump: 6.9 mm  
 Total thread: 269.33ft  
 Total bobbin: 85.06ft

Stop Sequence:

#	N#	Color	St.	Code	Name	Chart
1.	8	<span style="display:inline-block; width:15px; height:15px; background-color:black;"></span>	16,693	8	Black	Default
2.	3	<span style="display:inline-block; width:15px; height:15px; background-color:red;"></span>	2,376	3	Red	Default



# Production Worksheet

Wilcom EmbroideryStudio - Designing



Design: **5**

Title:

Stitches: 23,950  
Height: 5.51 in  
Width: 4.74 in  
Colors: 2  
Colorway: Colorway 1  
Zoom: 1:1

Machine format: Tajima  
Color changes: 1  
Stops: 2  
Trims: 45  
Appliqués: 0  
Left: 64.2 mm  
Right: 56.2 mm  
Up: 70.3 mm  
Down: 69.7 mm  
EndX: 0.00 in  
EndY: 0.00 in  
Area: 26.15 in<sup>2</sup>  
Max stitch: 6.9 mm  
Min stitch: 0.0 mm  
Max jump: 6.9 mm  
Total thread: 362.11ft  
Total bobbin: 121.07ft

Stop Sequence:

#	N#	Color	St.	Code	Name	Chart
1.	8		21,094	8	Black	Default
2.	3		2,854	3	Red	Default



# Production Worksheet

Wilcom EmbroideryStudio - Designing



Design: **6**

Title:

Stitches: 29,053  
 Height: 6.51 in  
 Width: 5.60 in  
 Colors: 2  
 Colorway: Colorway 1  
 Zoom: 1:1



Machine format: Tajima  
 Color changes: 1  
 Stops: 2  
 Trims: 45  
 Appliqués: 0  
 Left: 75.2 mm  
 Right: 67.2 mm  
 Up: 83.0 mm  
 Down: 82.4 mm  
 EndX: 0.00 in  
 EndY: 0.00 in  
 Area: 36.49 in<sup>2</sup>  
 Max stitch: 7.7 mm  
 Min stitch: 0.0 mm  
 Max jump: 6.7 mm  
 Total thread: 466.62ft  
 Total bobbin: 163.16ft

Stop Sequence:

#	N#	Color	St.	Code	Name	Chart
1.	8		25,682	8	Black	Default
2.	3		3,369	3	Red	Default

# Production Worksheet

Wilcom EmbroideryStudio - Designing



Design: **7**

Title:

Stitches: 34,494  
Height: 7.51 in  
Width: 6.46 in  
Colors: 2  
Colorway: Colorway 1  
Zoom: 1:1



# Production Worksheet

Wilcom EmbroideryStudio - Designing



Design: **7**

Title:

Stitches: 34,494  
 Height: 7.51 in  
 Width: 6.46 in  
 Colors: 2  
 Colorway: Colorway 1  
 Zoom: 1:1

Machine format: Tajima  
 Color changes: 1  
 Stops: 2  
 Trims: 45  
 Appliqués: 0  
 Left: 86.1 mm  
 Right: 78.1 mm  
 Up: 95.7 mm  
 Down: 95.1 mm  
 EndX: 0.00 in  
 EndY: 0.00 in  
 Area 48.55 in<sup>2</sup>  
 Max stitch: 8.8 mm  
 Min stitch: 0.0 mm  
 Max jump: 6.8 mm  
 Total thread: 584.09ft  
 Total bobbin: 211.61ft

Stop Sequence:

#	N#	Color	St.	Code	Name	Chart
1.	8		30,633	8	Black	Default
2.	3		3,859	3	Red	Default