

Production Worksheet

Wilcom EmbroideryStudio - Designing



Design: **3**

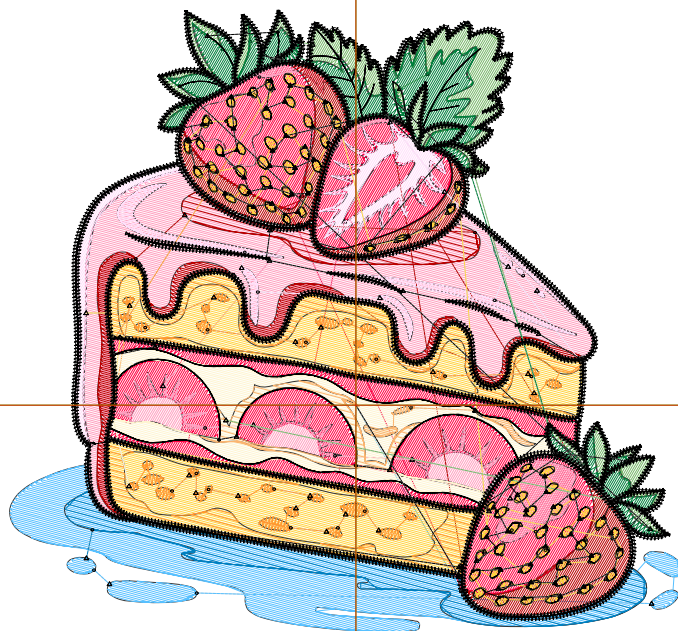
Title:

Stitches: 24,073
 Height: 3.24 in
 Width: 3.50 in
 Colors: 13
 Colorway: Colorway 1
 Zoom: 1:1

Machine format: Tajima
 Color changes: 12
 Stops: 13
 Trims: 171
 Appliqués: 0
 Left: 45.8 mm
 Right: 43.1 mm
 Up: 52.3 mm
 Down: 29.9 mm
 EndX: 0.00 in
 EndY: 0.00 in
 Area: 11.32 in²
 Max stitch: 8.9 mm
 Min stitch: 0.0 mm
 Max jump: 6.9 mm
 Total thread: 312.41ft
 Total bobbin: 89.00ft

Stop Sequence:

#	N#	Color	St.	Code	Name	Chart
1.	5		1,038	5	Aqua	Default
2.	2		235	2	Blue	Default
3.	3		2,855	3	Red	Default
4.	15		2,435	15	Pink	Default
5.	11		1,683	11	Dark Red	Default
6.	14		1,209	14	Brown	Default
7.	4		2,612	1083	Daisy	Madeira Classic 40
8.	12		1,110	12	Orange	Default
9.	6		666	6	Dark Magenta	Default
10.	7		243	7	Green	Default
11.	10		1,131	1377	Kiwi	Madeira Classic 40
12.	1		1,059	1	Dark Green	Default
13.	8		7,795	8	Black	Default



Production Worksheet

Wilcom EmbroideryStudio - Designing



Design: **4**

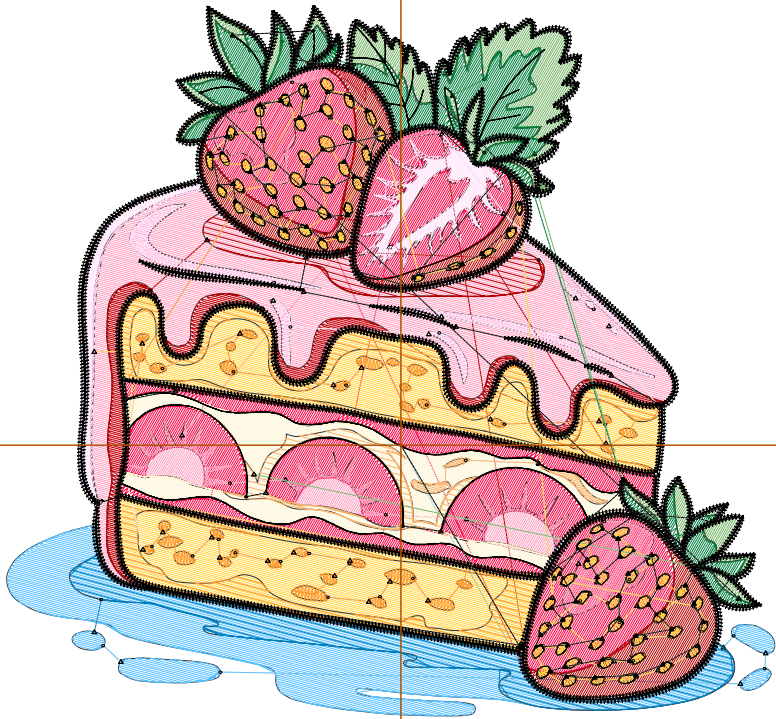
Title:

Stitches: 28,374
 Height: 3.70 in
 Width: 4.00 in
 Colors: 13
 Colorway: Colorway 1
 Zoom: 1:1

Machine format: Tajima
 Color changes: 12
 Stops: 13
 Trims: 195
 Appliqués: 0
 Left: 52.1 mm
 Right: 49.4 mm
 Up: 58.1 mm
 Down: 35.8 mm
 EndX: 0.00 in
 EndY: 0.00 in
 Area: 14.79 in²
 Max stitch: 10.2 mm
 Min stitch: 0.0 mm
 Max jump: 6.9 mm
 Total thread: 379.32ft
 Total bobbin: 111.92ft

Stop Sequence:

#	N#	Color	St.	Code	Name	Chart
1.	5		1,291	5	Aqua	Default
2.	2		271	2	Blue	Default
3.	3		3,500	3	Red	Default
4.	15		2,993	15	Pink	Default
5.	11		2,023	11	Dark Red	Default
6.	14		1,391	14	Brown	Default
7.	4		3,105	1083	Daisy	Madeira Classic 40
8.	12		1,344	12	Orange	Default
9.	6		829	6	Dark Magenta	Default
10.	7		294	7	Green	Default
11.	10		1,352	1377	Kiwi	Madeira Classic 40
12.	1		1,278	1	Dark Green	Default
13.	8		8,701	8	Black	Default



Production Worksheet

Wilcom EmbroideryStudio - Designing



Design: **4**

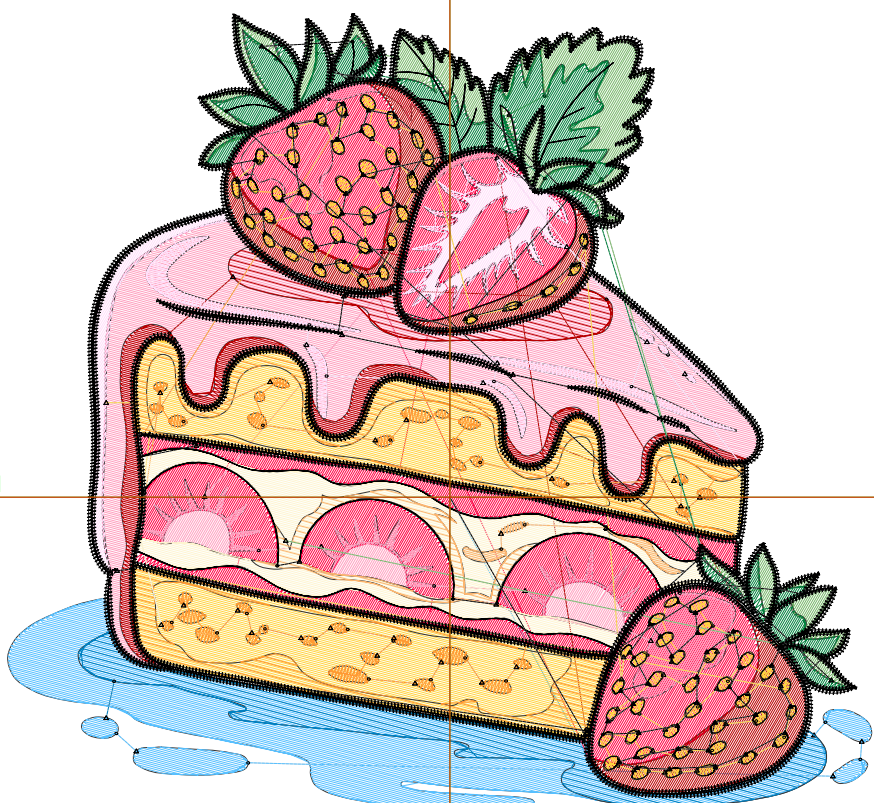
Title:

Stitches: 32,657
Height: 4.16 in
Width: 4.50 in
Colors: 13
Colorway: Colorway 1
Zoom: 1:1

Machine format: Tajima
Color changes: 12
Stops: 13
Trims: 217
Appliqués: 0
Left: 58.5 mm
Right: 55.8 mm
Up: 64.0 mm
Down: 41.7 mm
EndX: 0.00 in
EndY: 0.00 in
Area: 18.71 in²
Max stitch: 11.5 mm
Min stitch: 0.0 mm
Max jump: 7.0 mm
Total thread: 450.53ft
Total bobbin: 137.47ft

Stop Sequence:

#	N#	Color	St.	Code	Name	Chart
1.	5		1,536	5	Aqua	Default
2.	2		342	2	Blue	Default
3.	3		4,135	3	Red	Default
4.	15		3,578	15	Pink	Default
5.	11		2,365	11	Dark Red	Default
6.	14		1,607	14	Brown	Default
7.	4		3,712	1083	Daisy	Madeira Classic 40
8.	12		1,508	12	Orange	Default
9.	6		965	6	Dark Magenta	Default
10.	7		322	7	Green	Default
11.	10		1,560	1377	Kiwi	Madeira Classic 40
12.	1		1,472	1	Dark Green	Default
13.	8		9,553	8	Black	Default



Production Worksheet

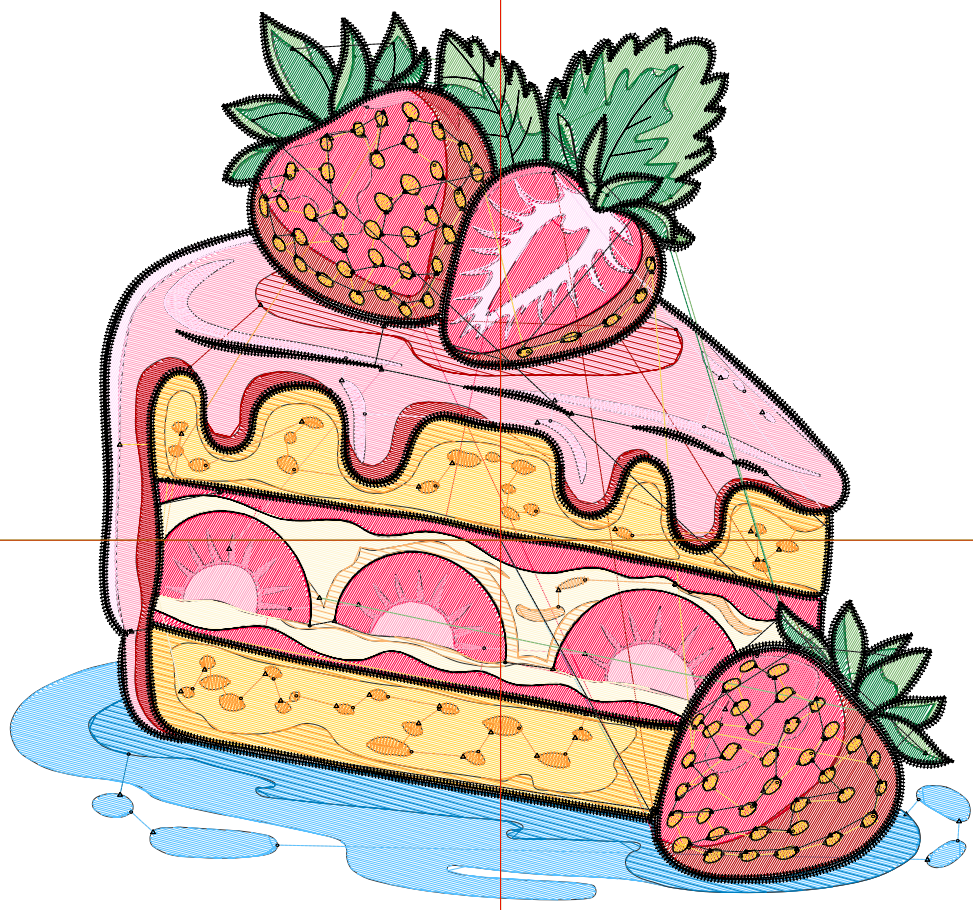
Wilcom EmbroideryStudio - Designing



Design: **5**

Title:

Stitches: 37,000
Height: 4.62 in
Width: 5.00 in
Colors: 13
Colorway: Colorway 1
Zoom: 1:1



1

1

2

2

Production Worksheet

Wilcom EmbroideryStudio - Designing



Design: **5**

Title:

Stitches: 37,000
 Height: 4.62 in
 Width: 5.00 in
 Colors: 13
 Colorway: Colorway 1
 Zoom: 1:1

Machine format: Tajima
 Color changes: 12
 Stops: 13
 Trims: 228
 Appliqués: 0
 Left: 64.8 mm
 Right: 62.1 mm
 Up: 69.9 mm
 Down: 47.6 mm
 EndX: 0.00 in
 EndY: 0.00 in
 Area 23.10 in²
 Max stitch: 7.0 mm
 Min stitch: 0.0 mm
 Max jump: 7.0 mm
 Total thread: 523.64ft
 Total bobbin: 163.91ft

Stop Sequence:

#	N#	Color	St.	Code	Name	Chart
1.	5		1,828	5	Aqua	Default
2.	2		385	2	Blue	Default
3.	3		4,785	3	Red	Default
4.	15		4,141	15	Pink	Default
5.	11		2,738	11	Dark Red	Default
6.	14		1,821	14	Brown	Default
7.	4		4,235	1083	Daisy	Madeira Classic 40
8.	12		1,606	12	Orange	Default
9.	6		1,125	6	Dark Magenta	Default
10.	7		359	7	Green	Default
11.	10		1,809	1377	Kiwi	Madeira Classic 40
12.	1		1,719	1	Dark Green	Default
13.	8		10,447	8	Black	Default

Production Worksheet

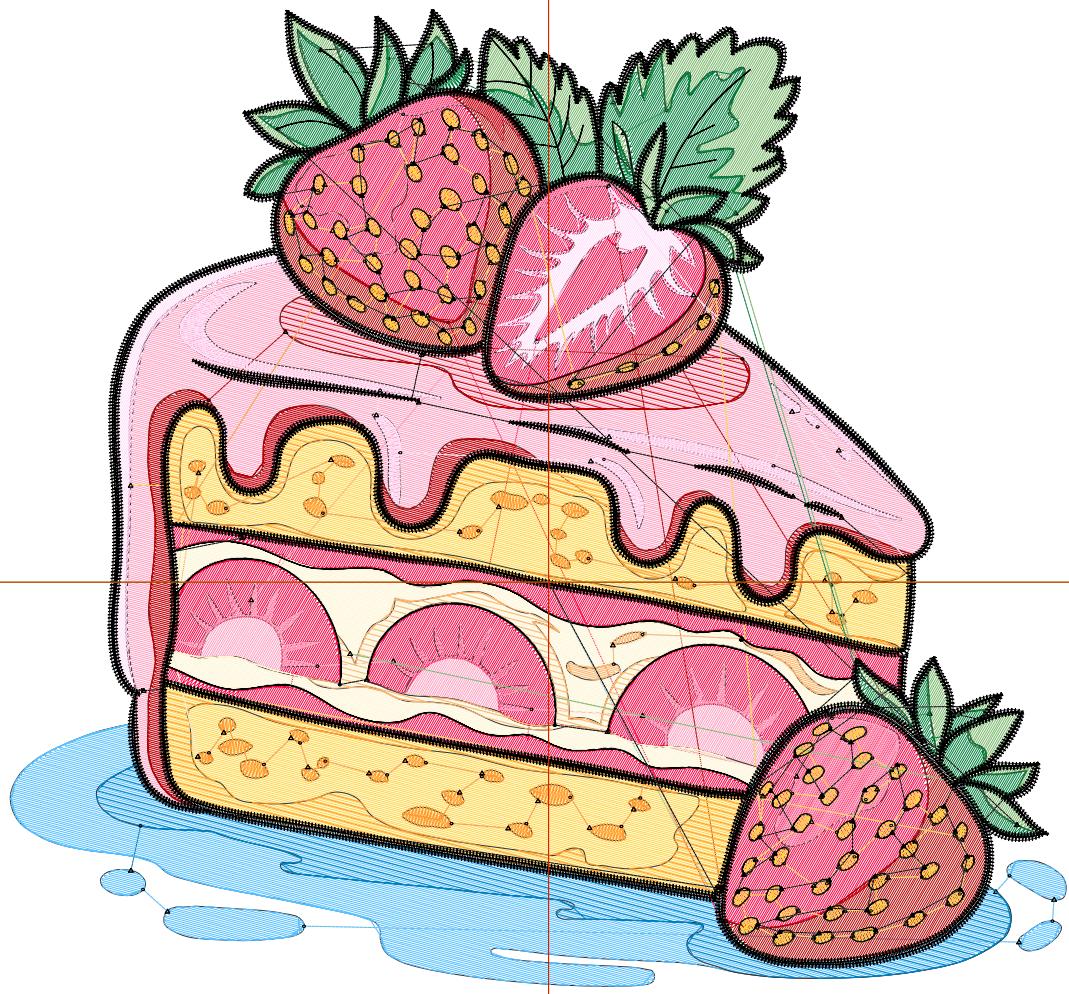
Wilcom EmbroideryStudio - Designing



Design: **5**

Title:

Stitches: 41,714
Height: 5.09 in
Width: 5.50 in
Colors: 13
Colorway: Colorway 1
Zoom: 1:1



Production Worksheet

Wilcom EmbroideryStudio - Designing



Design: **5**

Title:

Stitches: 41,714
 Height: 5.09 in
 Width: 5.50 in
 Colors: 13
 Colorway: Colorway 1
 Zoom: 1:1

Machine format: Tajima
 Color changes: 12
 Stops: 13
 Trims: 236
 Appliqués: 0
 Left: 71.1 mm
 Right: 68.5 mm
 Up: 75.8 mm
 Down: 53.4 mm
 EndX: 0.00 in
 EndY: 0.00 in
 Area 27.96 in²
 Max stitch: 7.0 mm
 Min stitch: 0.0 mm
 Max jump: 7.0 mm
 Total thread: 606.54ft
 Total bobbin: 194.70ft

Stop Sequence:

#	N#	Color	St.	Code	Name	Chart
1.	5		2,103	5	Aqua	Default
2.	2		399	2	Blue	Default
3.	3		5,536	3	Red	Default
4.	15		4,767	15	Pink	Default
5.	11		3,086	11	Dark Red	Default
6.	14		2,091	14	Brown	Default
7.	4		4,842	1083	Daisy	Madeira Classic 40
8.	12		1,836	12	Orange	Default
9.	6		1,332	6	Dark Magenta	Default
10.	7		392	7	Green	Default
11.	10		2,020	1377	Kiwi	Madeira Classic 40
12.	1		1,978	1	Dark Green	Default
13.	8		11,330	8	Black	Default

Production Worksheet

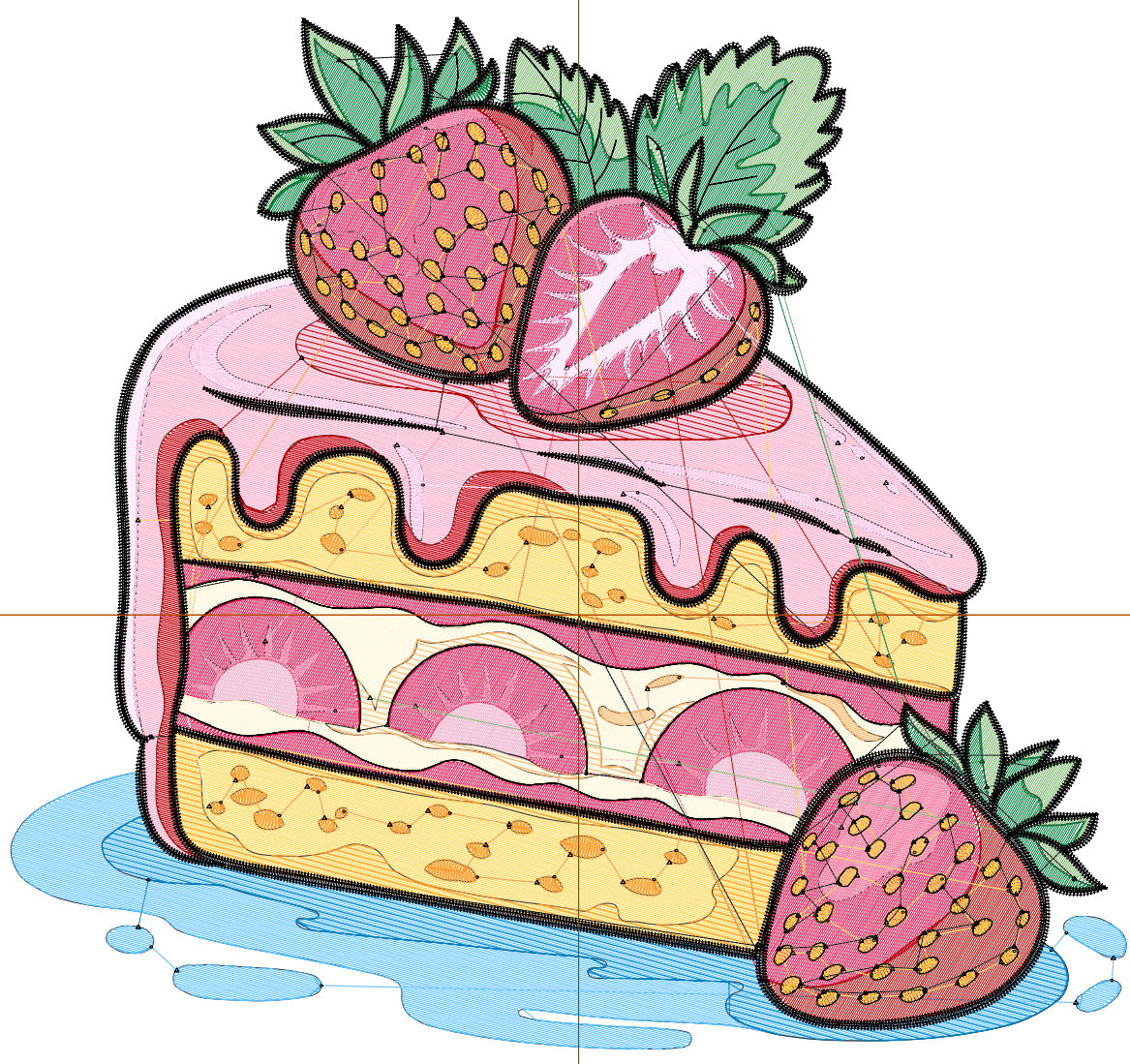
Wilcom EmbroideryStudio - Designing



Design: **6**

Title:

Stitches: 46,640
Height: 5.55 in
Width: 6.00 in
Colors: 13
Colorway: Colorway 1
Zoom: 1:1



Production Worksheet

Wilcom EmbroideryStudio - Designing



Design: **6**

Title:

Stitches: 46,640
 Height: 5.55 in
 Width: 6.00 in
 Colors: 13
 Colorway: Colorway 1
 Zoom: 1:1

Machine format: Tajima
 Color changes: 12
 Stops: 13
 Trims: 246
 Appliqués: 0
 Left: 77.5 mm
 Right: 74.8 mm
 Up: 81.6 mm
 Down: 59.3 mm
 EndX: 0.00 in
 EndY: 0.00 in
 Area 33.28 in²
 Max stitch: 6.9 mm
 Min stitch: 0.0 mm
 Max jump: 6.9 mm
 Total thread: 693.35ft
 Total bobbin: 226.99ft

Stop Sequence:

#	N#	Color	St.	Code	Name	Chart
1.	5		2,444	5	Aqua	Default
2.	2		463	2	Blue	Default
3.	3		6,283	3	Red	Default
4.	15		5,517	15	Pink	Default
5.	11		3,502	11	Dark Red	Default
6.	14		2,351	14	Brown	Default
7.	4		5,464	1083	Daisy	Madeira Classic 40
8.	12		1,927	12	Orange	Default
9.	6		1,505	6	Dark Magenta	Default
10.	7		437	7	Green	Default
11.	10		2,276	1377	Kiwi	Madeira Classic 40
12.	1		2,229	1	Dark Green	Default
13.	8		12,240	8	Black	Default

Production Worksheet

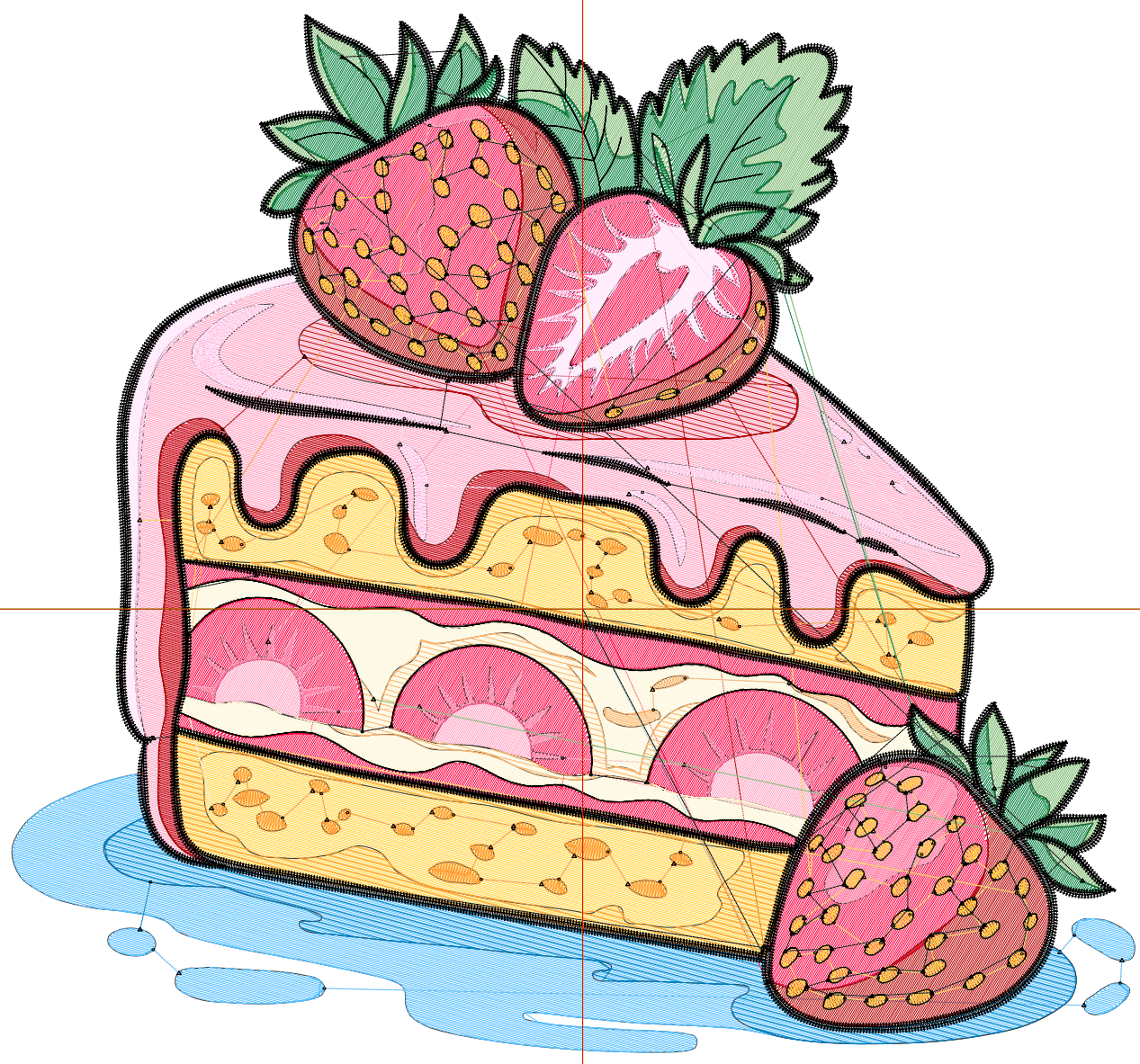
Wilcom EmbroideryStudio - Designing



Design: **6**

Title:

Stitches: 51,611
Height: 6.01 in
Width: 6.50 in
Colors: 13
Colorway: Colorway 1
Zoom: 1:1



Production Worksheet

Wilcom EmbroideryStudio - Designing



Design: **6**

Title:

Stitches: 51,611
 Height: 6.01 in
 Width: 6.50 in
 Colors: 13
 Colorway: Colorway 1
 Zoom: 1:1

Machine format: Tajima
 Color changes: 12
 Stops: 13
 Trims: 255
 Appliqués: 0
 Left: 83.9 mm
 Right: 81.2 mm
 Up: 87.5 mm
 Down: 65.2 mm
 EndX: 0.00 in
 EndY: 0.00 in
 Area 39.05 in²
 Max stitch: 7.0 mm
 Min stitch: 0.0 mm
 Max jump: 7.0 mm
 Total thread: 784.87ft
 Total bobbin: 261.90ft

Stop Sequence:

#	N#	Color	St.	Code	Name	Chart
1.	5		2,795	5	Aqua	Default
2.	2		544	2	Blue	Default
3.	3		7,062	3	Red	Default
4.	15		6,267	15	Pink	Default
5.	11		3,915	11	Dark Red	Default
6.	14		2,576	14	Brown	Default
7.	4		6,073	1083	Daisy	Madeira Classic 40
8.	12		2,115	12	Orange	Default
9.	6		1,671	6	Dark Magenta	Default
10.	7		470	7	Green	Default
11.	10		2,526	1377	Kiwi	Madeira Classic 40
12.	1		2,467	1	Dark Green	Default
13.	8		13,128	8	Black	Default

Production Worksheet

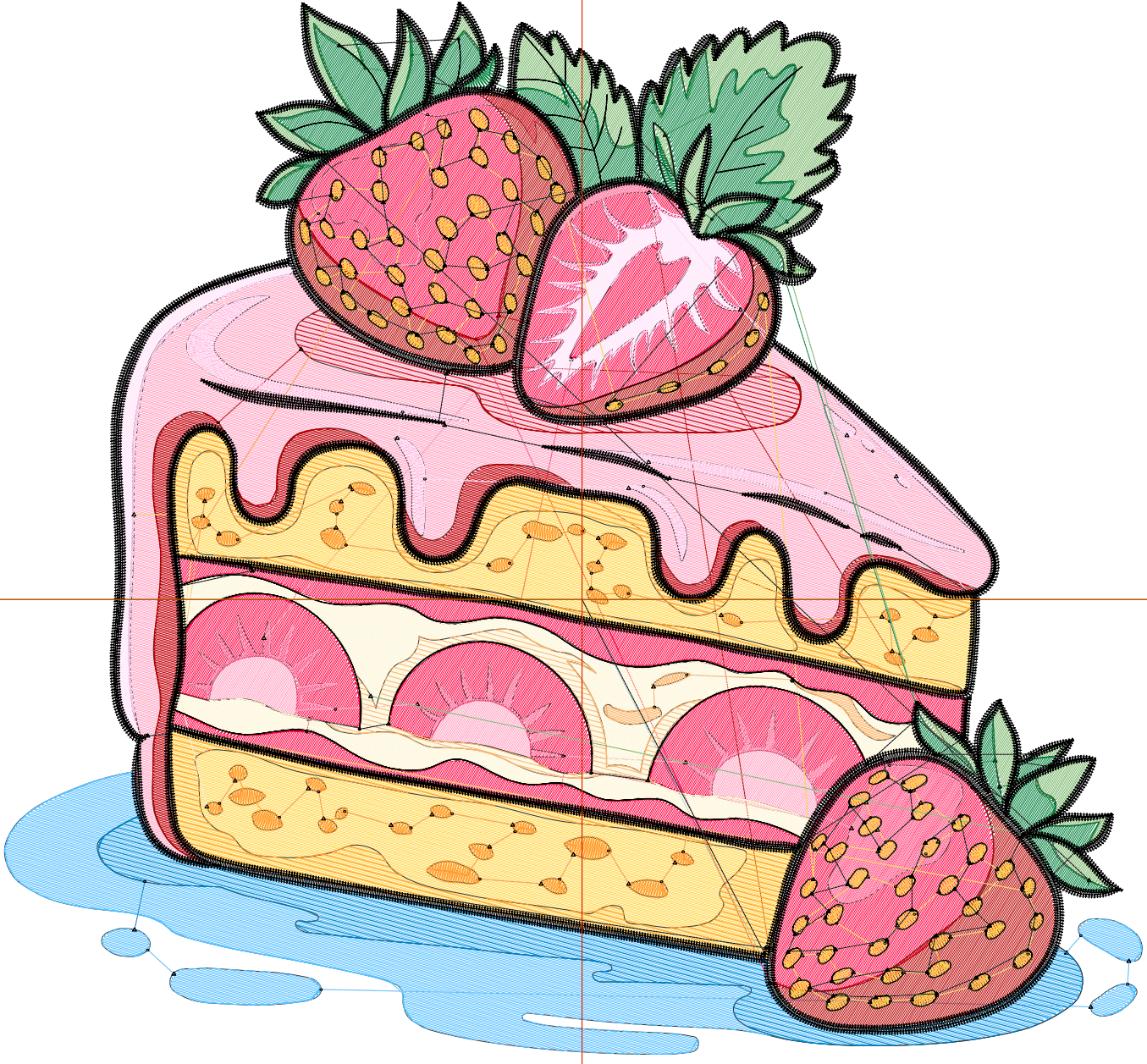
Wilcom EmbroideryStudio - Designing



Design: 7

Title:

Stitches: 57,059
Height: 6.47 in
Width: 7.00 in
Colors: 13
Colorway: Colorway 1
Zoom: 1:1



Production Worksheet

Wilcom EmbroideryStudio - Designing



Design: **7**

Title:

Stitches: 57,059
 Height: 6.47 in
 Width: 7.00 in
 Colors: 13
 Colorway: Colorway 1
 Zoom: 1:1

Machine format: Tajima
 Color changes: 12
 Stops: 13
 Trims: 261
 Appliqués: 0
 Left: 90.2 mm
 Right: 87.5 mm
 Up: 93.4 mm
 Down: 71.1 mm
 EndX: 0.00 in
 EndY: 0.00 in
 Area 45.30 in²
 Max stitch: 7.5 mm
 Min stitch: 0.0 mm
 Max jump: 7.0 mm
 Total thread: 885.67ft
 Total bobbin: 300.44ft

Stop Sequence:

#	N#	Color	St.	Code	Name	Chart
1.	5		3,163	5	Aqua	Default
2.	2		601	2	Blue	Default
3.	3		7,927	3	Red	Default
4.	15		7,078	15	Pink	Default
5.	11		4,348	11	Dark Red	Default
6.	14		2,853	14	Brown	Default
7.	4		6,751	1083	Daisy	Madeira Classic 40
8.	12		2,386	12	Orange	Default
9.	6		1,903	6	Dark Magenta	Default
10.	7		516	7	Green	Default
11.	10		2,781	1377	Kiwi	Madeira Classic 40
12.	1		2,712	1	Dark Green	Default
13.	8		14,038	8	Black	Default

Production Worksheet

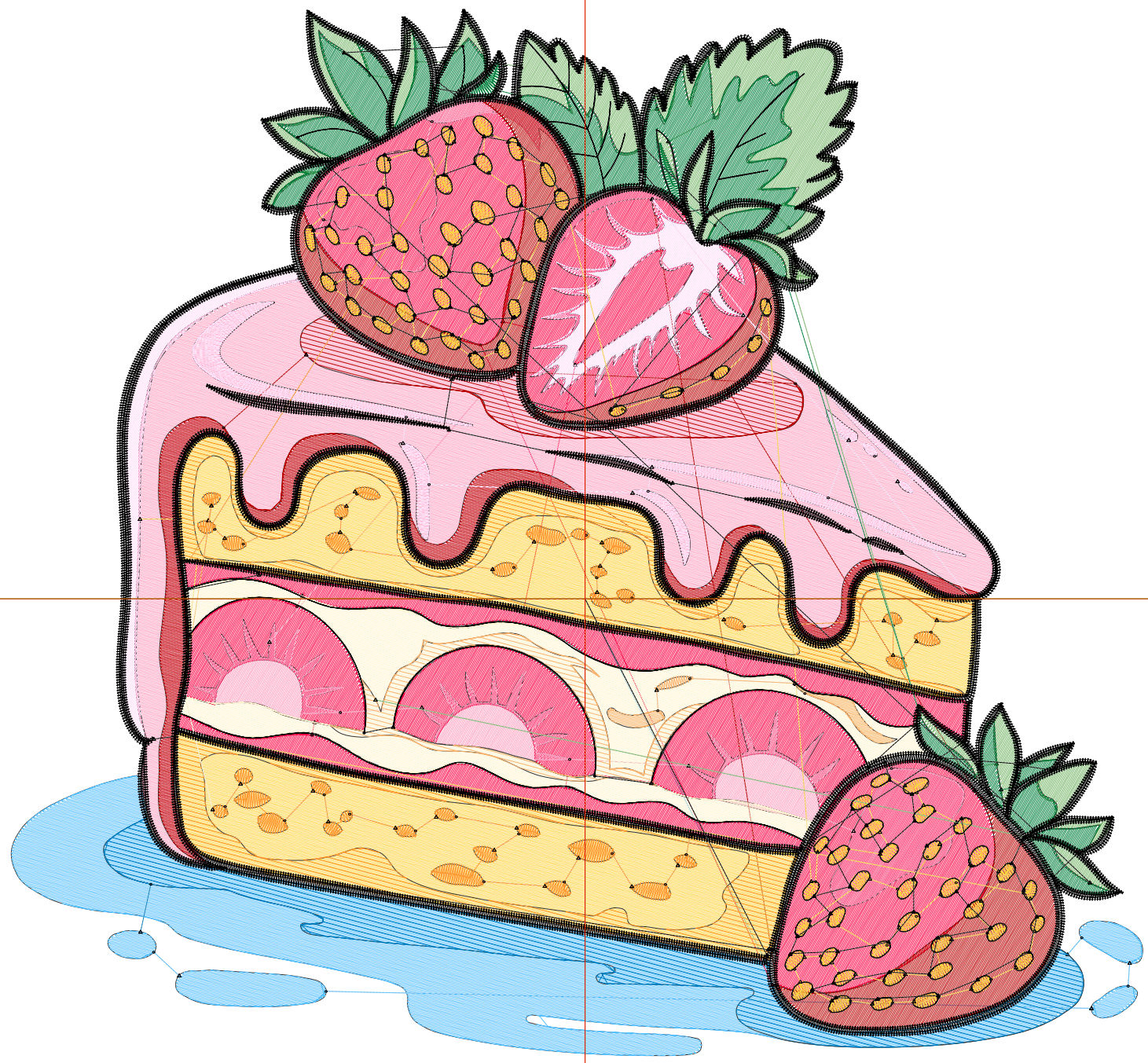
Wilcom EmbroideryStudio - Designing



Design: 7

Title:

Stitches: 62,339
Height: 6.94 in
Width: 7.50 in
Colors: 13
Colorway: Colorway 1
Zoom: 1:1



Production Worksheet

Wilcom EmbroideryStudio - Designing



Design: **7**

Title:

Stitches: 62,339
 Height: 6.94 in
 Width: 7.50 in
 Colors: 13
 Colorway: Colorway 1
 Zoom: 1:1

Machine format: Tajima
 Color changes: 12
 Stops: 13
 Trims: 265
 Appliqués: 0
 Left: 96.6 mm
 Right: 93.9 mm
 Up: 99.2 mm
 Down: 76.9 mm
 EndX: 0.00 in
 EndY: 0.00 in
 Area 52.00 in²
 Max stitch: 8.0 mm
 Min stitch: 0.0 mm
 Max jump: 7.0 mm
 Total thread: 985.95ft
 Total bobbin: 339.34ft

Stop Sequence:

#	N#	Color	St.	Code	Name	Chart
1.	5		3,560	5	Aqua	Default
2.	2		676	2	Blue	Default
3.	3		8,828	3	Red	Default
4.	15		7,878	15	Pink	Default
5.	11		4,779	11	Dark Red	Default
6.	14		3,046	14	Brown	Default
7.	4		7,424	1083	Daisy	Madeira Classic 40
8.	12		2,496	12	Orange	Default
9.	6		2,157	6	Dark Magenta	Default
10.	7		541	7	Green	Default
11.	10		3,067	1377	Kiwi	Madeira Classic 40
12.	1		2,978	1	Dark Green	Default
13.	8		14,907	8	Black	Default

Production Worksheet

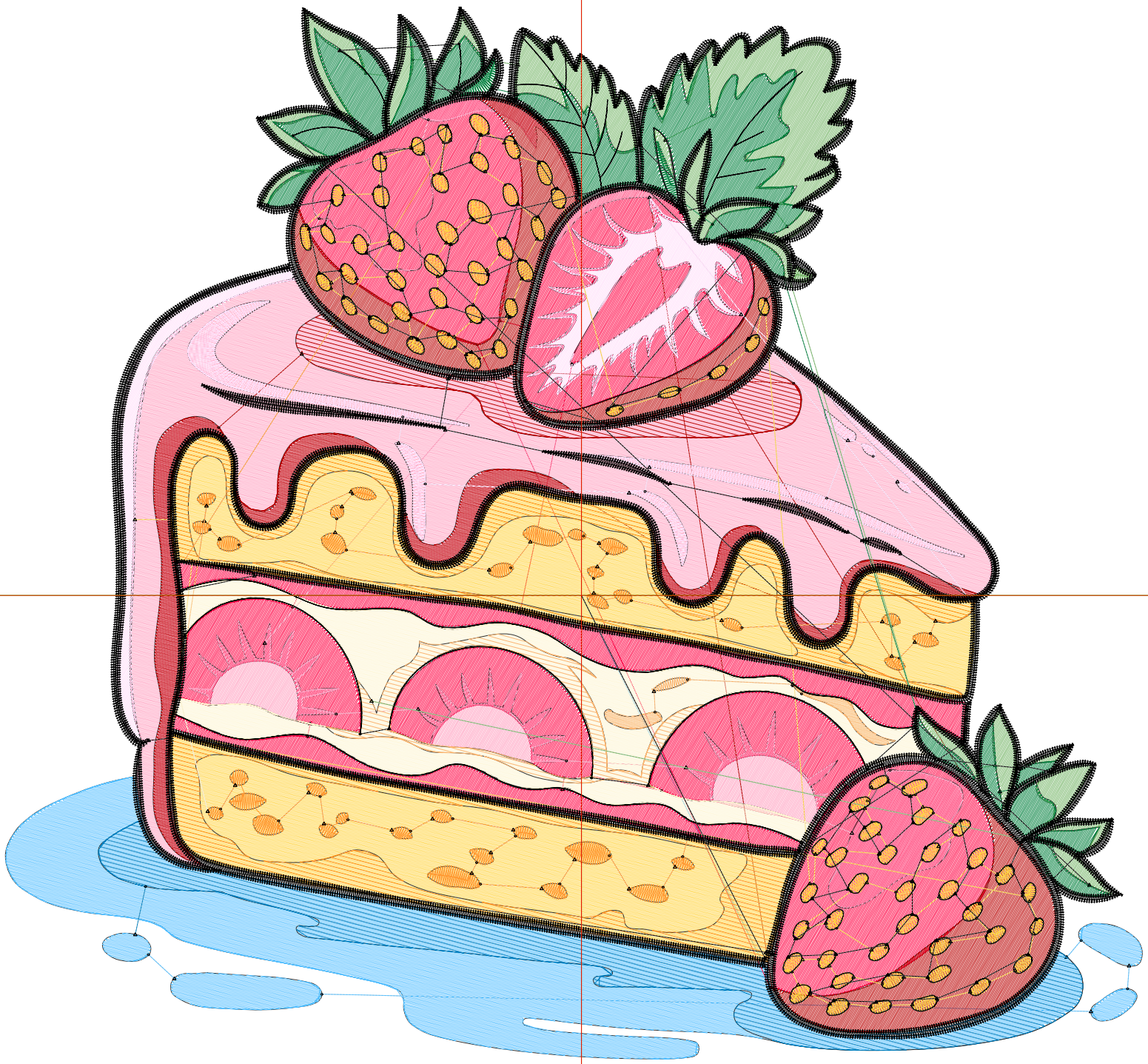
Wilcom EmbroideryStudio - Designing



Design: 8

Title:

Stitches: 68,284
Height: 7.40 in
Width: 8.00 in
Colors: 13
Colorway: Colorway 1
Zoom: 1:1



Production Worksheet

Wilcom EmbroideryStudio - Designing



Design: **8**

Title:

Stitches: 68,284
 Height: 7.40 in
 Width: 8.00 in
 Colors: 13
 Colorway: Colorway 1
 Zoom: 1:1

Machine format: Tajima
 Color changes: 12
 Stops: 13
 Trims: 270
 Appliqués: 0
 Left: 102.9 mm
 Right: 100.2 mm
 Up: 105.1 mm
 Down: 82.8 mm
 EndX: 0.00 in
 EndY: 0.00 in
 Area 59.17 in²
 Max stitch: 8.6 mm
 Min stitch: 0.0 mm
 Max jump: 7.0 mm
 Total thread: 1099.32ft
 Total bobbin: 383.40ft

Stop Sequence:

#	N#	Color	St.	Code	Name	Chart
1.	5		3,978	5	Aqua	Default
2.	2		732	2	Blue	Default
3.	3		9,739	3	Red	Default
4.	15		8,788	15	Pink	Default
5.	11		5,289	11	Dark Red	Default
6.	14		3,383	14	Brown	Default
7.	4		8,164	1083	Daisy	Madeira Classic 40
8.	12		2,770	12	Orange	Default
9.	6		2,389	6	Dark Magenta	Default
10.	7		610	7	Green	Default
11.	10		3,368	1377	Kiwi	Madeira Classic 40
12.	1		3,256	1	Dark Green	Default
13.	8		15,816	8	Black	Default