

Production Worksheet

Wilcom EmbroideryStudio - Designing



Design: **3**

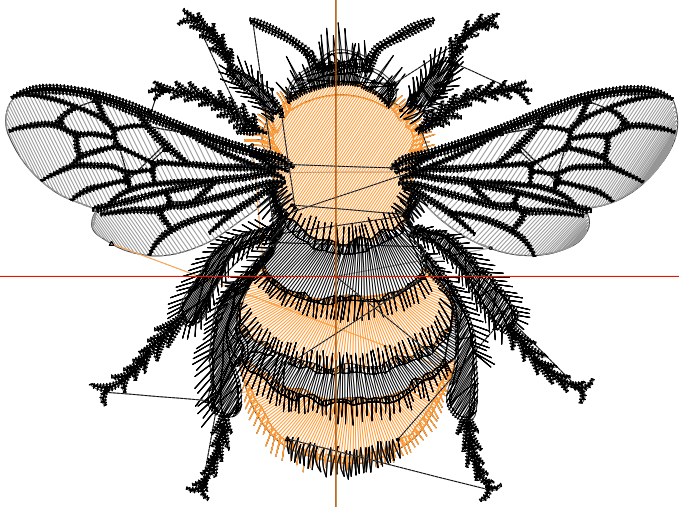
Title:

Stitches: 16,550
 Height: 2.57 in
 Width: 3.50 in
 Colors: 3
 Colorway: Colorway 1
 Zoom: 1:1

Machine format: Tajima
 Color changes: 2
 Stops: 3
 Trims: 57
 Appliqués: 0
 Left: 43.6 mm
 Right: 45.2 mm
 Up: 35.5 mm
 Down: 29.8 mm
 EndX: 0.00 in
 EndY: 0.00 in
 Area: 8.99 in²
 Max stitch: 6.8 mm
 Min stitch: 0.0 mm
 Max jump: 6.8 mm
 Total thread: 207.37ft
 Total bobbin: 57.95ft

Stop Sequence:

#	N#	Color	St.	Code	Name	Chart
1.	18		1,089	R150	G150 B150	
2.	12		1,543	R255	G153 B51	
3.	8		13,916	8	Black	Default



Production Worksheet

Wilcom EmbroideryStudio - Designing



Design: **4**

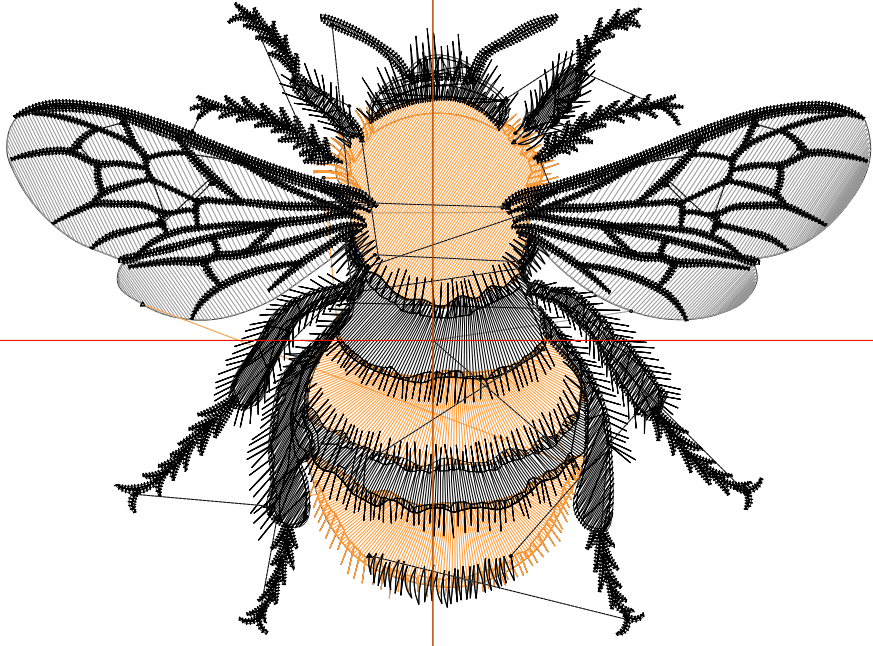
Title:

Stitches: 21,338
Height: 3.30 in
Width: 4.50 in
Colors: 3
Colorway: Colorway 1
Zoom: 1:1

Machine format: Tajima
Color changes: 2
Stops: 3
Trims: 64
Appliqués: 0
Left: 56.3 mm
Right: 57.9 mm
Up: 44.8 mm
Down: 39.1 mm
EndX: 0.00 in
EndY: 0.00 in
Area: 14.84 in²
Max stitch: 6.8 mm
Min stitch: 0.0 mm
Max jump: 6.8 mm
Total thread: 285.19ft
Total bobbin: 85.45ft

Stop Sequence:

#	N#	Color	St.	Code	Name	Chart
1.	18		1,593		R150 G150 B150	
2.	12		2,198		R255 G153 B51	
3.	8		17,545	8	Black	Default



Production Worksheet

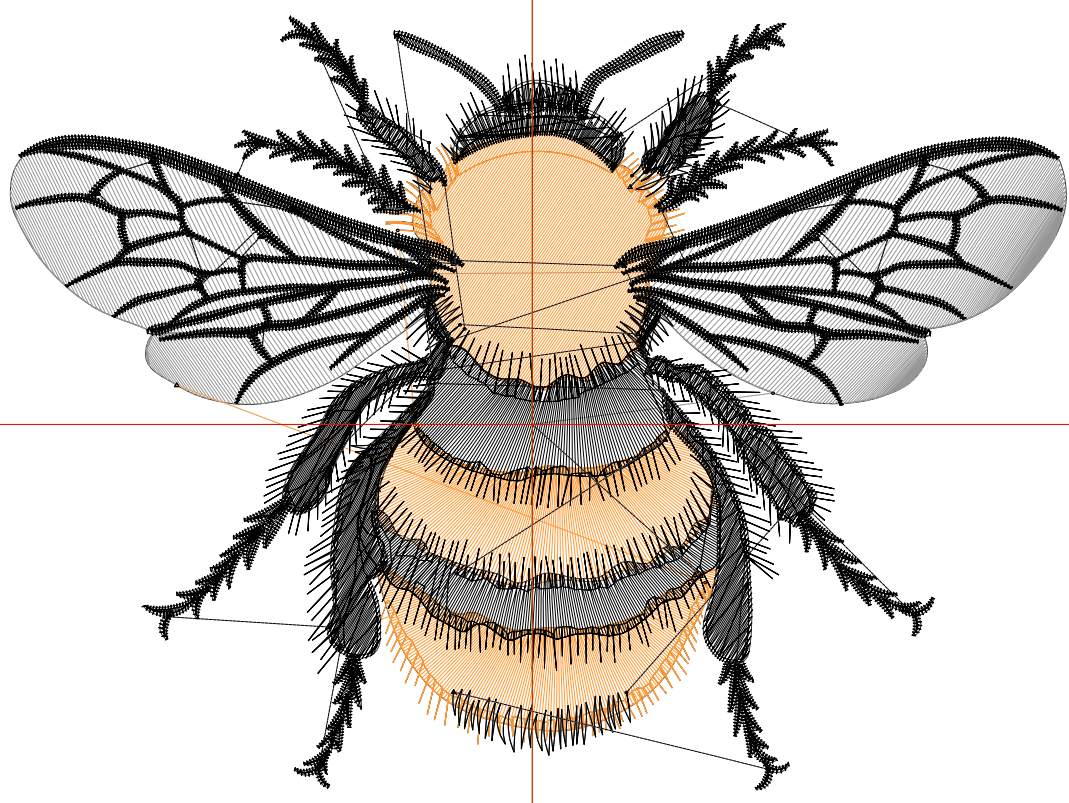
Wilcom EmbroideryStudio - Designing



Design: **5**

Title:

Stitches: 26,325
Height: 4.03 in
Width: 5.50 in
Colors: 3
Colorway: Colorway 1
Zoom: 1:1



Production Worksheet

Wilcom EmbroideryStudio - Designing



Design: **5**

Title:

Stitches: 26,325
 Height: 4.03 in
 Width: 5.50 in
 Colors: 3
 Colorway: Colorway 1
 Zoom: 1:1

Machine format: Tajima
 Color changes: 2
 Stops: 3
 Trims: 68
 Appliqués: 0
 Left: 69.0 mm
 Right: 70.6 mm
 Up: 54.1 mm
 Down: 48.4 mm
 EndX: 0.00 in
 EndY: 0.00 in
 Area 22.17 in²
 Max stitch: 7.0 mm
 Min stitch: 0.0 mm
 Max jump: 7.0 mm
 Total thread: 373.19ft
 Total bobbin: 118.20ft

Stop Sequence:

#	N#	Color	St.	Code	Name	Chart
1.	18		2,222		R150 G150 B150	
2.	12		2,948		R255 G153 B51	
3.	8		21,153	8	Black	Default

Production Worksheet

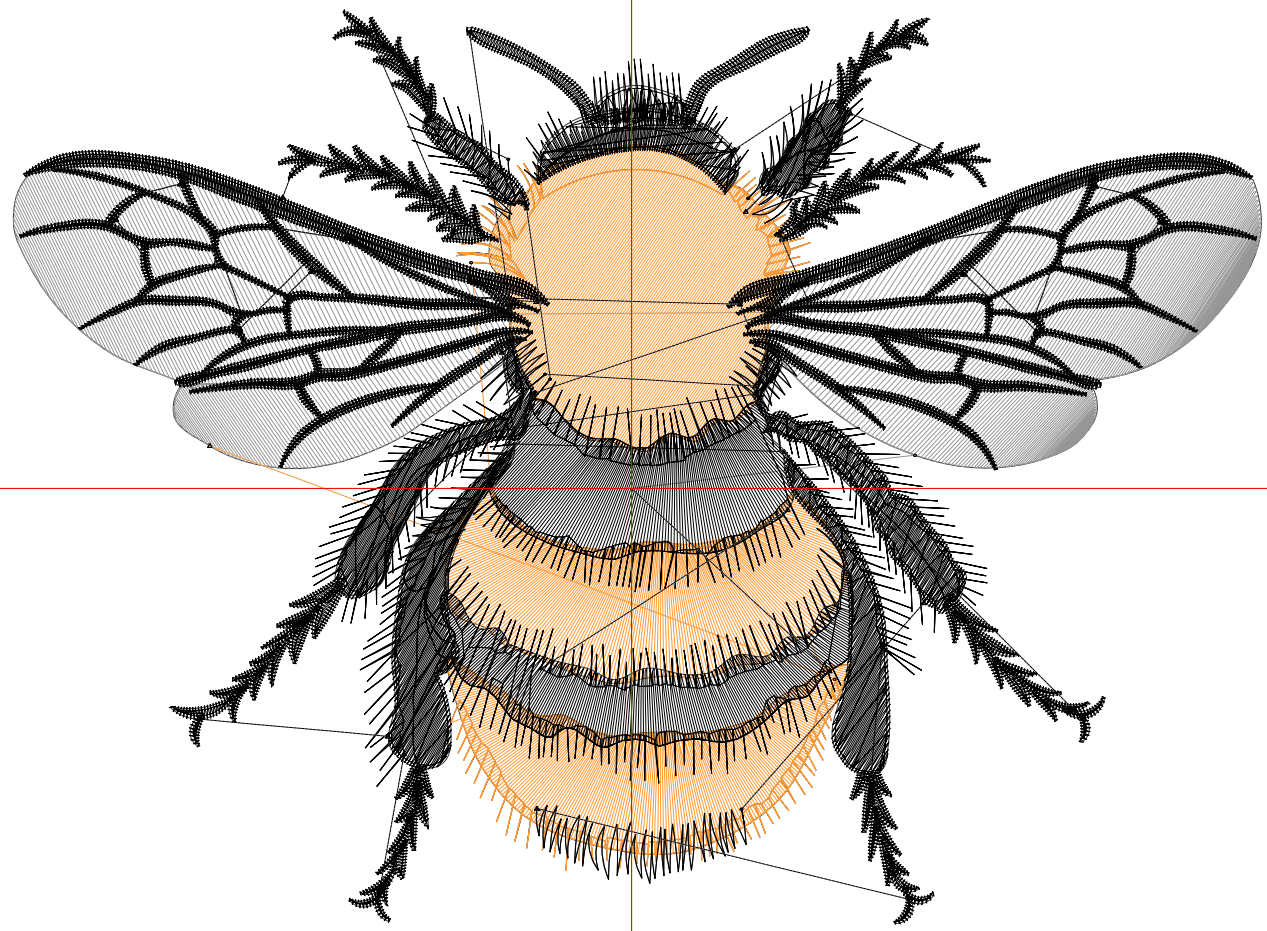
Wilcom EmbroideryStudio - Designing



Design: **6**

Title:

Stitches: 31,740
Height: 4.76 in
Width: 6.50 in
Colors: 3
Colorway: Colorway 1
Zoom: 1:1



Production Worksheet

Wilcom EmbroideryStudio - Designing



Design: **6**

Title:

Stitches: 31,740
 Height: 4.76 in
 Width: 6.50 in
 Colors: 3
 Colorway: Colorway 1
 Zoom: 1:1

Machine format: Tajima
 Color changes: 2
 Stops: 3
 Trims: 68
 Appliqués: 0
 Left: 81.7 mm
 Right: 83.3 mm
 Up: 63.3 mm
 Down: 57.6 mm
 EndX: 0.00 in
 EndY: 0.00 in
 Area 30.95 in²
 Max stitch: 7.1 mm
 Min stitch: 0.0 mm
 Max jump: 6.9 mm
 Total thread: 472.01ft
 Total bobbin: 155.71ft

Stop Sequence:

#	N#	Color	St.	Code	Name	Chart
1.	18		2,910		R150 G150 B150	
2.	12		3,796		R255 G153 B51	
3.	8		25,032	8	Black	Default

Production Worksheet

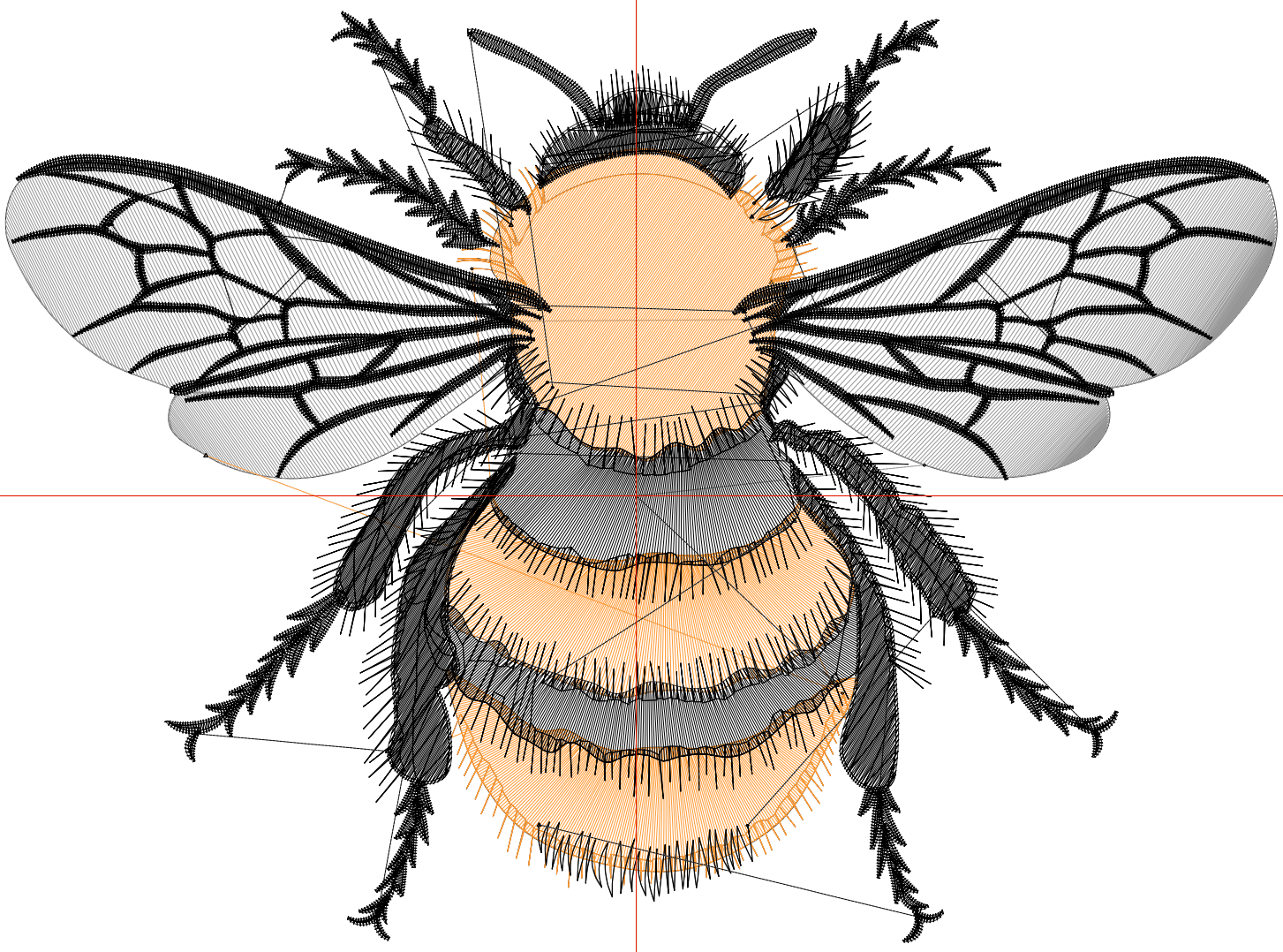
Wilcom EmbroideryStudio - Designing



Design: **7**

Title:

Stitches: 37,452
Height: 5.49 in
Width: 7.50 in
Colors: 3
Colorway: Colorway 1
Zoom: 1:1



Production Worksheet

Wilcom EmbroideryStudio - Designing



Design: **7**

Title:

Stitches: 37,452
Height: 5.49 in
Width: 7.50 in
Colors: 3
Colorway: Colorway 1
Zoom: 1:1

Machine format: Tajima
Color changes: 2
Stops: 3
Trims: 74
Appliqués: 0
Left: 94.4 mm
Right: 96.0 mm
Up: 72.6 mm
Down: 66.9 mm
EndX: 0.00 in
EndY: 0.00 in
Area 41.20 in²
Max stitch: 8.2 mm
Min stitch: 0.0 mm
Max jump: 6.9 mm
Total thread: 581.73ft
Total bobbin: 198.52ft

Stop Sequence:

#	N#	Color	St.	Code	Name	Chart
1.	18		3,693		R150 G150 B150	
2.	12		4,779		R255 G153 B51	
3.	8		28,978	8	Black	Default