

Production Worksheet

Wilcom EmbroideryStudio - Designing



Design: **3**

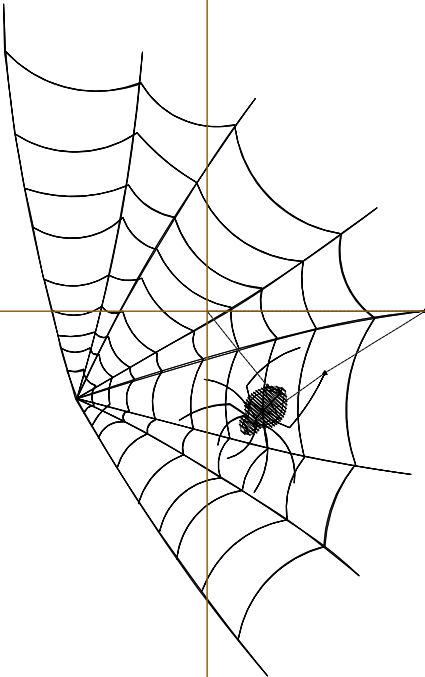
Title:

Stitches: 1,146
 Height: 3.50 in
 Width: 2.20 in
 Colors: 1
 Colorway: Colorway 1
 Zoom: 1:1

Machine format: Tajima
 Color changes: 0
 Stops: 1
 Trims: 3
 Appliqués: 0
 Left: 26.9 mm
 Right: 28.9 mm
 Up: 40.6 mm
 Down: 48.3 mm
 EndX: 0.00 in
 EndY: 0.00 in
 Area: 7.69 in²
 Max stitch: 5.8 mm
 Min stitch: 0.5 mm
 Max jump: 5.8 mm
 Total thread: 17.29ft
 Total bobbin: 5.60ft

Stop Sequence:

#	N#	Color	St.	Code	Name	Chart
1.	8		1,144	8	Black	Default



Production Worksheet

Wilcom EmbroideryStudio - Designing



Design: **4**

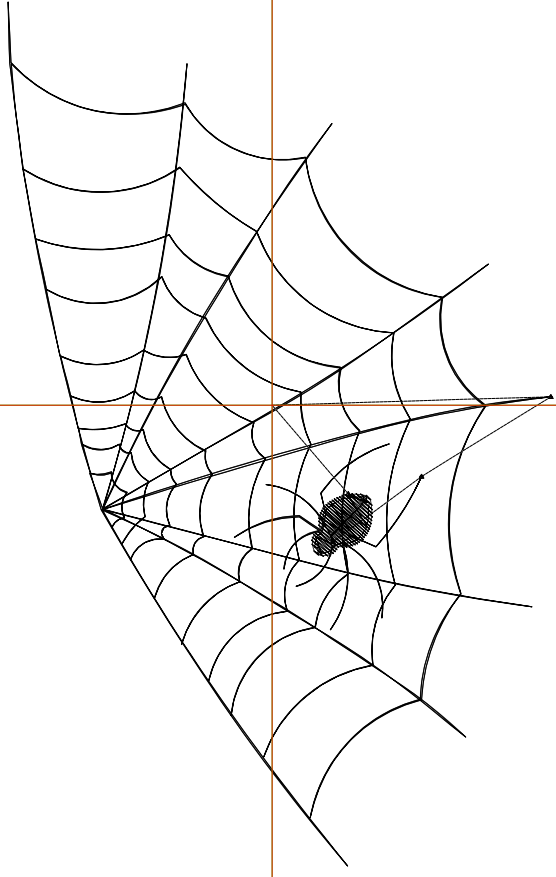
Title:

Stitches: 1,382
 Height: 4.50 in
 Width: 2.83 in
 Colors: 1
 Colorway: Colorway 1
 Zoom: 1:1

Machine format: Tajima
 Color changes: 0
 Stops: 1
 Trims: 3
 Appliqués: 0
 Left: 34.9 mm
 Right: 36.9 mm
 Up: 53.3 mm
 Down: 61.0 mm
 EndX: 0.00 in
 EndY: 0.00 in
 Area: 12.72 in²
 Max stitch: 6.1 mm
 Min stitch: 0.4 mm
 Max jump: 6.1 mm
 Total thread: 21.89ft
 Total bobbin: 7.41ft

Stop Sequence:

#	N#	Color	St.	Code	Name	Chart
1.	8	█	1,380	8	Black	Default



Production Worksheet

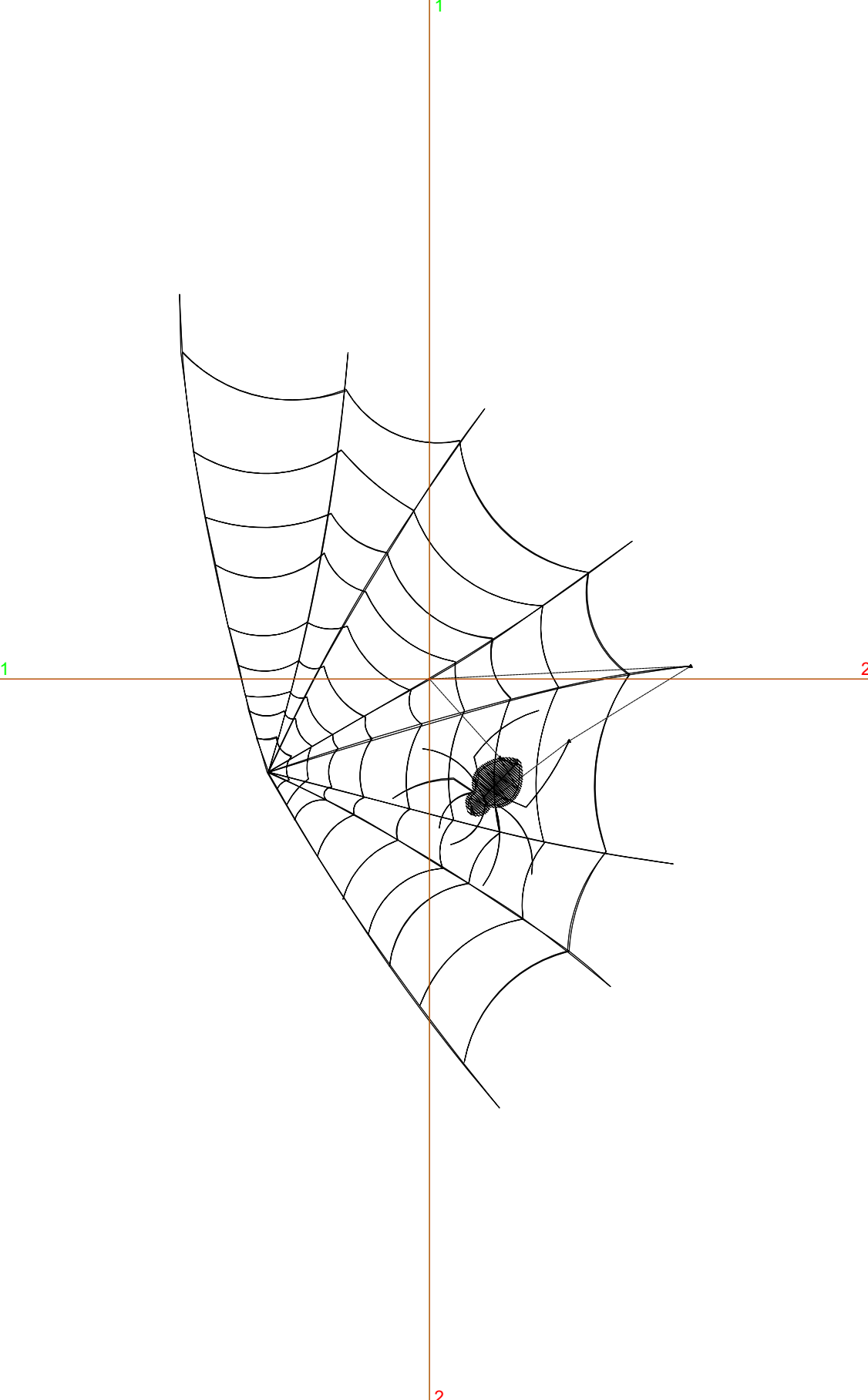
Wilcom EmbroideryStudio - Designing



Design: **5**

Title:

Stitches: 1,638
 Height: 5.50 in
 Width: 3.45 in
 Colors: 1
 Colorway: Colorway 1
 Zoom: 1:1



Machine format: Tajima
 Color changes: 0
 Stops: 1
 Trims: 3
 Appliqués: 0
 Left: 42.9 mm
 Right: 44.8 mm
 Up: 66.0 mm
 Down: 73.7 mm
 EndX: 0.00 in
 EndY: 0.00 in
 Area: 19.00 in²
 Max stitch: 6.4 mm
 Min stitch: 0.5 mm
 Max jump: 6.4 mm
 Total thread: 26.74ft
 Total bobbin: 9.28ft

Stop Sequence:

#	N#	Color	St.	Code	Name	Chart
1.	8	█	1,636	8	Black	Default

Production Worksheet

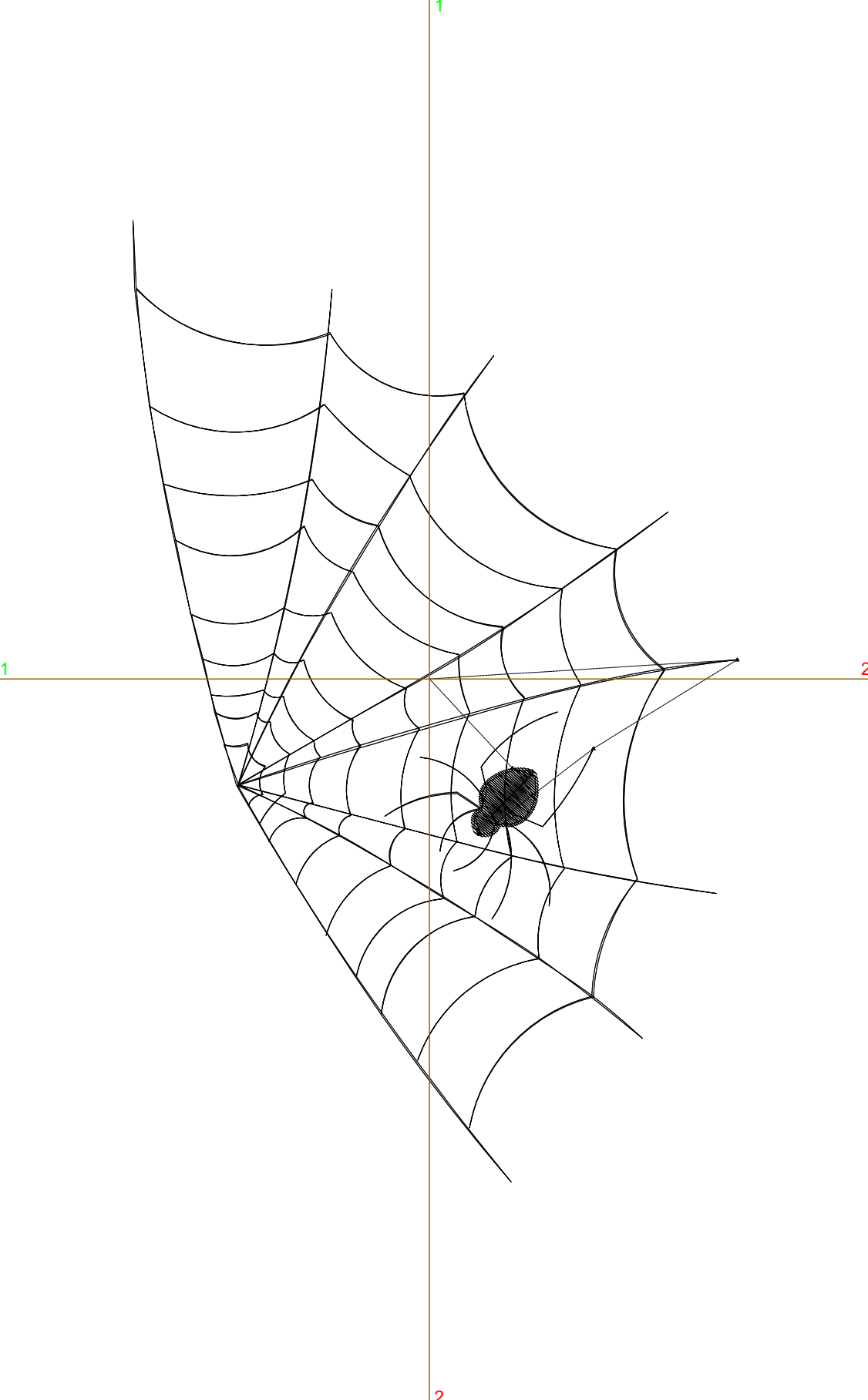
Wilcom EmbroideryStudio - Designing



Design: **6**

Title:

Stitches: 1,899
 Height: 6.50 in
 Width: 4.08 in
 Colors: 1
 Colorway: Colorway 1
 Zoom: 1:1



Machine format: Tajima
 Color changes: 0
 Stops: 1
 Trims: 3
 Appliqués: 0
 Left: 50.9 mm
 Right: 52.8 mm
 Up: 78.7 mm
 Down: 86.4 mm
 EndX: 0.00 in
 EndY: 0.00 in
 Area: 26.53 in²
 Max stitch: 6.6 mm
 Min stitch: 0.5 mm
 Max jump: 6.6 mm
 Total thread: 31.81ft
 Total bobbin: 11.27ft

Stop Sequence:

#	N#	Color	St.	Code	Name	Chart
1.	8	█	1,897	8	Black	Default

Production Worksheet

Wilcom EmbroideryStudio - Designing



Design: **7**

Title:

Stitches: 2,154
 Height: 7.50 in
 Width: 4.71 in
 Colors: 1
 Colorway: Colorway 1
 Zoom: 1:1

Machine format: Tajima
 Color changes: 0
 Stops: 1
 Trims: 3
 Appliqués: 0
 Left: 58.8 mm
 Right: 60.8 mm
 Up: 91.4 mm
 Down: 99.1 mm
 EndX: 0.00 in
 EndY: 0.00 in
 Area: 35.32 in²
 Max stitch: 6.8 mm
 Min stitch: 0.5 mm
 Max jump: 6.8 mm
 Total thread: 36.98ft
 Total bobbin: 13.35ft

Stop Sequence:

#	N#	Color	St.	Code	Name	Chart
1.	8	█	2,152	8	Black	Default

