

Production Worksheet

Wilcom EmbroideryStudio - Designing



Design: **3**

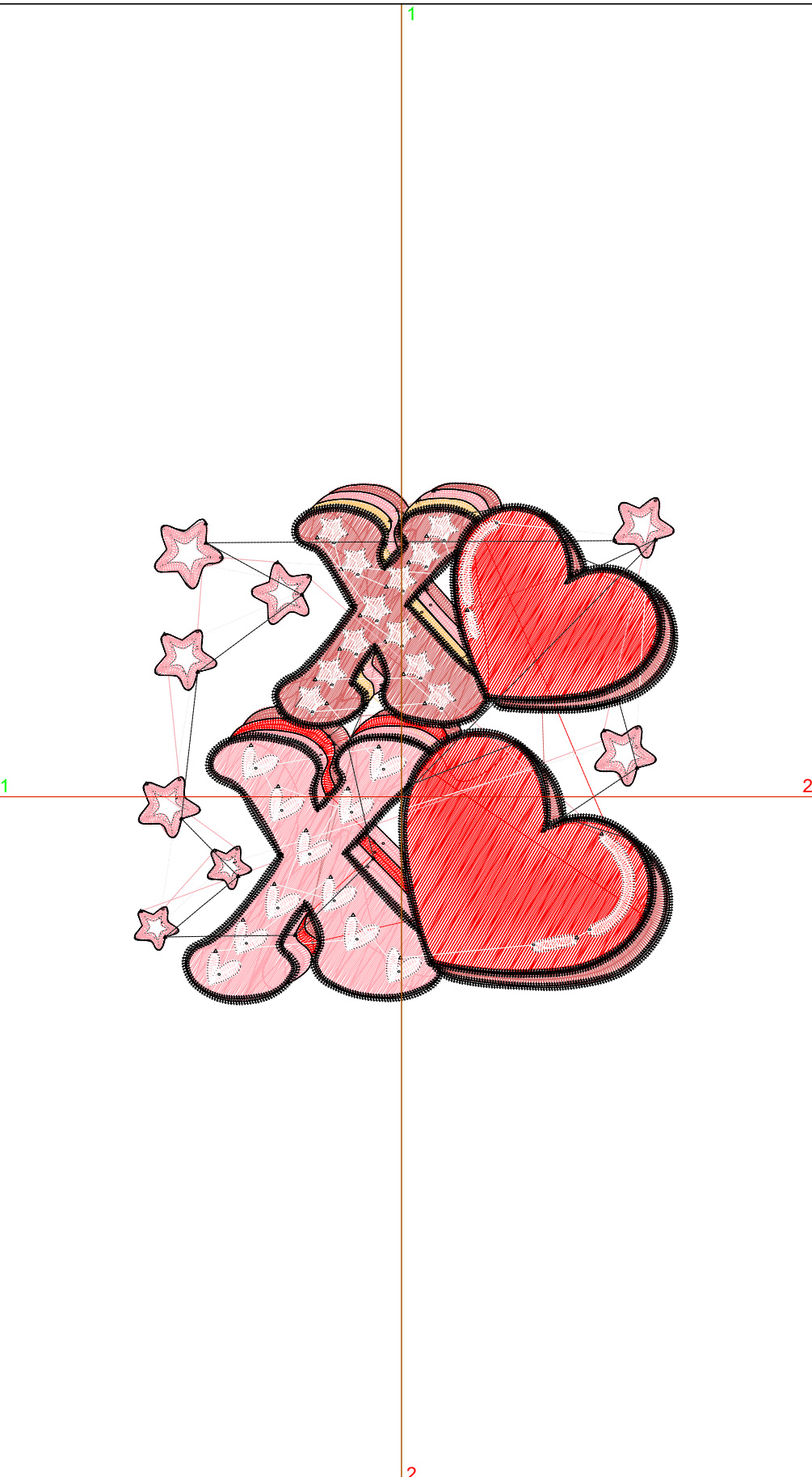
Title:

Stitches: 21,108
 Height: 3.37 in
 Width: 3.50 in
 Colors: 6
 Colorway: Colorway 1
 Zoom: 1:1

Machine format: Tajima
 Color changes: 6
 Stops: 7
 Trims: 97
 Appliqués: 0
 Left: 43.7 mm
 Right: 45.3 mm
 Up: 51.4 mm
 Down: 34.1 mm
 EndX: 0.00 in
 EndY: 0.00 in
 Area 11.79 in²
 Max stitch: 6.9 mm
 Min stitch: 0.0 mm
 Max jump: 6.9 mm
 Total thread: 331.75ft
 Total bobbin: 113.15ft

Stop Sequence:

#	N#	Color	St.	Code	Name	Chart
1.	1		3,205	R255	G168 B177	
2.	2		2,911	R214	G103 B103	
3.	16		408	16	Sand	Default
4.	3		3,747	3	Red	Default
5.	9		2,980	9	White	Default
6.	1		2,185	R255	G168 B177	
7.	8		5,670	8	Black	Default



Production Worksheet

Wilcom EmbroideryStudio - Designing



Design: **4**

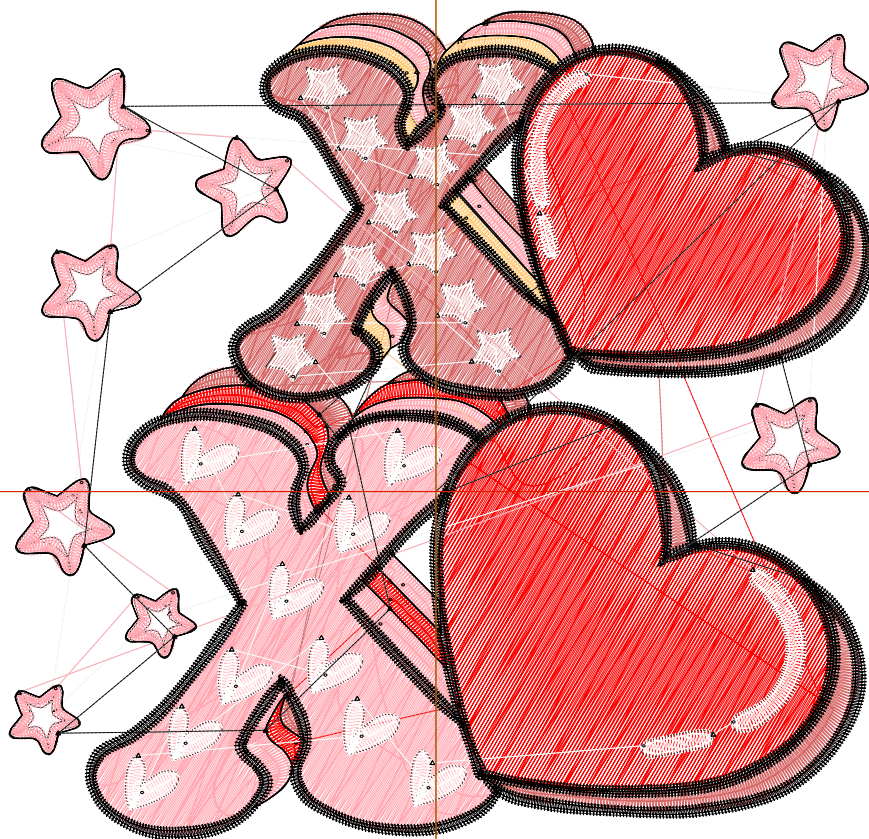
Title:

Stitches: 28,283
Height: 4.32 in
Width: 4.51 in
Colors: 6
Colorway: Colorway 1
Zoom: 1:1

Machine format: Tajima
Color changes: 6
Stops: 7
Trims: 98
Appliqués: 0
Left: 56.5 mm
Right: 58.0 mm
Up: 63.6 mm
Down: 46.2 mm
EndX: 0.00 in
EndY: 0.00 in
Area: 19.48 in²
Max stitch: 7.0 mm
Min stitch: 0.0 mm
Max jump: 7.0 mm
Total thread: 485.74ft
Total bobbin: 176.51ft

Stop Sequence:

#	N#	Color	St.	Code	Name	Chart
1.	1		4,569		R255 G168 B177	
2.	2		4,004		R214 G103 B103	
3.	16		511	16	Sand	Default
4.	3		5,699	3	Red	Default
5.	9		3,608	9	White	Default
6.	1		2,724		R255 G168 B177	
7.	8		7,166	8	Black	Default



Production Worksheet

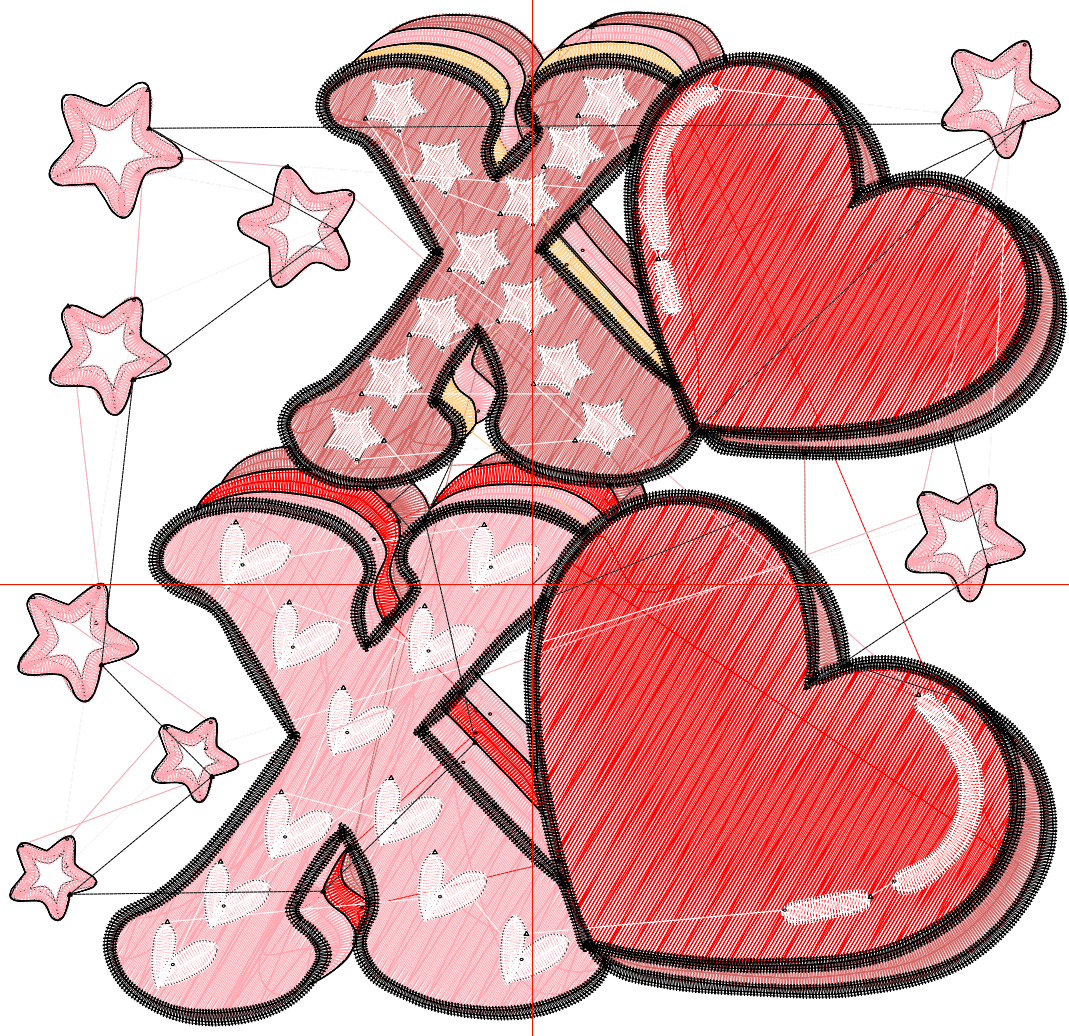
Wilcom EmbroideryStudio - Designing



Design: **5**

Title:

Stitches: 36,601
Height: 5.28 in
Width: 5.51 in
Colors: 6
Colorway: Colorway 1
Zoom: 1:1



Production Worksheet

Wilcom EmbroideryStudio - Designing



Design: **5**

Title:

Stitches: 36,601
 Height: 5.28 in
 Width: 5.51 in
 Colors: 6
 Colorway: Colorway 1
 Zoom: 1:1

Machine format: Tajima
 Color changes: 6
 Stops: 7
 Trims: 98
 Appliqués: 0
 Left: 69.2 mm
 Right: 70.7 mm
 Up: 75.8 mm
 Down: 58.4 mm
 EndX: 0.00 in
 EndY: 0.00 in
 Area 29.09 in²
 Max stitch: 7.0 mm
 Min stitch: 0.0 mm
 Max jump: 7.0 mm
 Total thread: 672.87ft
 Total bobbin: 255.06ft

Stop Sequence:

#	N#	Color	St.	Code	Name	Chart
1.	1		6,138		R255 G168 B177	
2.	2		5,294		R214 G103 B103	
3.	16		611	16	Sand	Default
4.	3		8,149	3	Red	Default
5.	9		4,450	9	White	Default
6.	1		3,268		R255 G168 B177	
7.	8		8,689	8	Black	Default

Production Worksheet

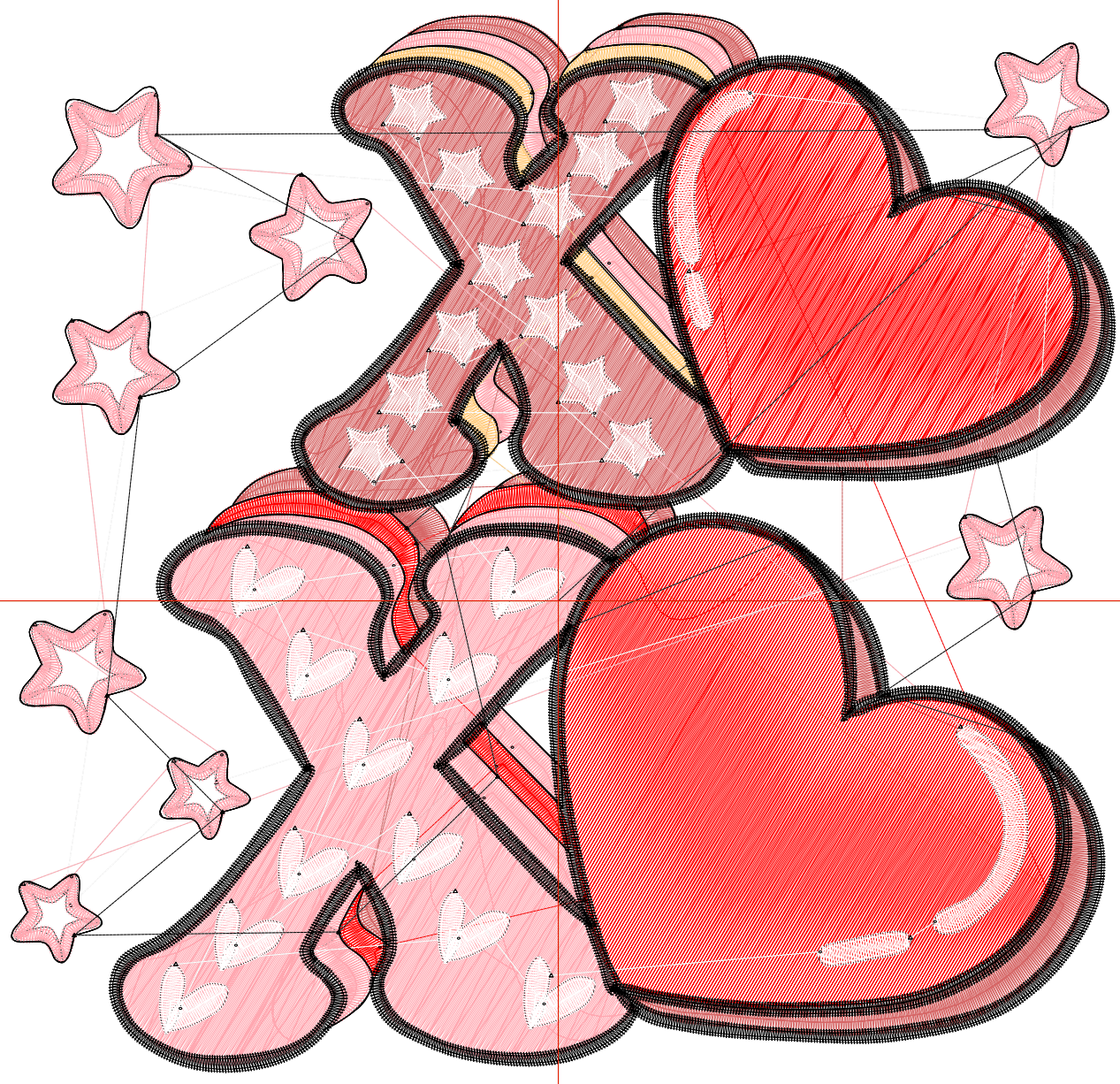
Wilcom EmbroideryStudio - Designing



Design: **6**

Title:

Stitches: 45,227
Height: 6.24 in
Width: 6.51 in
Colors: 6
Colorway: Colorway 1
Zoom: 1:1



Production Worksheet

Wilcom EmbroideryStudio - Designing



Design: **6**

Title:

Stitches: 45,227
 Height: 6.24 in
 Width: 6.51 in
 Colors: 6
 Colorway: Colorway 1
 Zoom: 1:1

Machine format: Tajima
 Color changes: 6
 Stops: 7
 Trims: 98
 Appliqués: 0
 Left: 81.9 mm
 Right: 83.4 mm
 Up: 87.9 mm
 Down: 70.6 mm
 EndX: 0.00 in
 EndY: 0.00 in
 Area 40.60 in²
 Max stitch: 7.0 mm
 Min stitch: 0.0 mm
 Max jump: 7.0 mm
 Total thread: 876.00ft
 Total bobbin: 341.89ft

Stop Sequence:

#	N#	Color	St.	Code	Name	Chart
1.	1		7,990		R255 G168 B177	
2.	2		6,752		R214 G103 B103	
3.	16		713	16	Sand	Default
4.	3		10,451	3	Red	Default
5.	9		5,300	9	White	Default
6.	1		3,803		R255 G168 B177	
7.	8		10,216	8	Black	Default

Production Worksheet

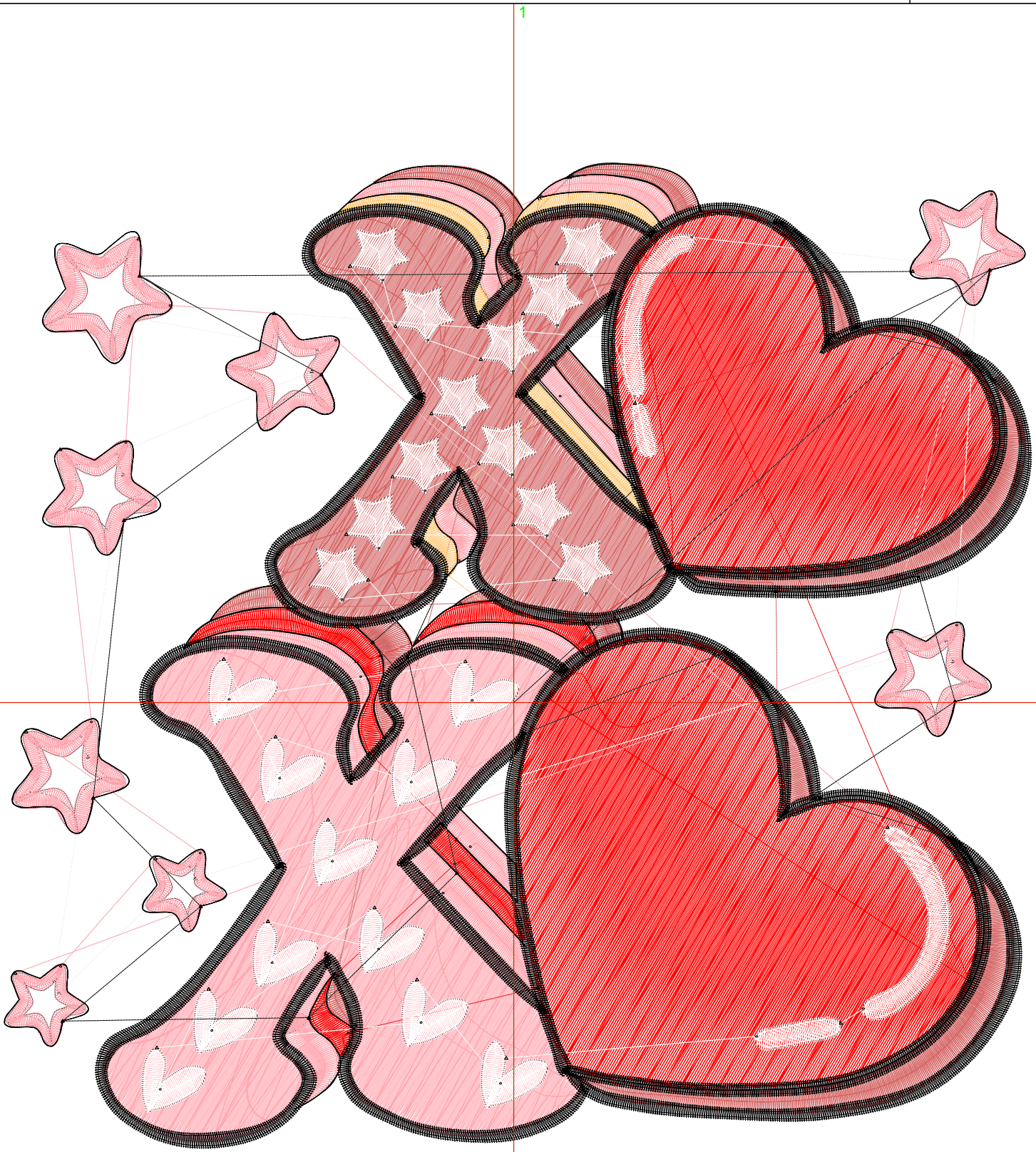
Wilcom EmbroideryStudio - Designing



Design: **7**

Title:

Stitches: 55,999
Height: 7.20 in
Width: 7.50 in
Colors: 6
Colorway: Colorway 1
Zoom: 1:1



Production Worksheet

Wilcom EmbroideryStudio - Designing



Design: **7**

Title:

Stitches: 55,999
 Height: 7.20 in
 Width: 7.50 in
 Colors: 6
 Colorway: Colorway 1
 Zoom: 1:1

Machine format: Tajima
 Color changes: 6
 Stops: 7
 Trims: 99
 Appliqués: 0
 Left: 94.5 mm
 Right: 96.1 mm
 Up: 100.1 mm
 Down: 82.8 mm
 EndX: 0.00 in
 EndY: 0.00 in
 Area 54.03 in²
 Max stitch: 7.0 mm
 Min stitch: 0.0 mm
 Max jump: 7.0 mm
 Total thread: 1140.31ft
 Total bobbin: 456.63ft

Stop Sequence:

#	N#	Color	St.	Code	Name	Chart
1.	1		10,006		R255 G168 B177	
2.	2		8,473		R214 G103 B103	
3.	16		824	16	Sand	Default
4.	3		14,243	3	Red	Default
5.	9		6,271	9	White	Default
6.	1		4,374		R255 G168 B177	
7.	8		11,806	8	Black	Default