

Production Worksheet

Wilcom EmbroideryStudio - Designing



Design: **3**

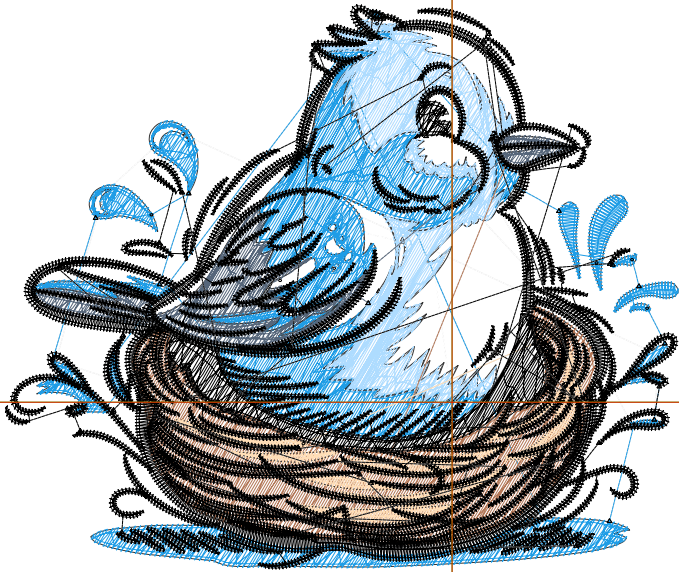
Title:

Stitches: 24,907
 Height: 2.94 in
 Width: 3.50 in
 Colors: 7
 Colorway: Colorway 1
 Zoom: 1:1

Machine format: Tajima
 Color changes: 6
 Stops: 7
 Trims: 103
 Appliqués: 0
 Left: 59.1 mm
 Right: 29.9 mm
 Up: 52.6 mm
 Down: 22.1 mm
 EndX: 0.00 in
 EndY: 0.00 in
 Area: 10.31 in²
 Max stitch: 10.1 mm
 Min stitch: 0.0 mm
 Max jump: 6.9 mm
 Total thread: 329.59ft
 Total bobbin: 97.11ft

Stop Sequence:

#	N#	Color	St.	Code	Name	Chart
1.	9		2,777	9	White	Default
2.	2		3,900		R31 G157 B230	
3.	3		1,931		R174 G220 B255	
4.	1		1,011		R86 G102 B122	
5.	5		1,272		R179 G119 B87	
6.	4		915		R255 G222 B183	
7.	8		13,099	8	Black	Default



Production Worksheet

Wilcom EmbroideryStudio - Designing



Design: **4**

Title:

Stitches: 32,311
 Height: 3.78 in
 Width: 4.50 in
 Colors: 7
 Colorway: Colorway 1
 Zoom: 1:1

Machine format: Tajima
 Color changes: 6
 Stops: 7
 Trims: 112
 Appliqués: 0
 Left: 71.8 mm
 Right: 42.6 mm
 Up: 63.3 mm
 Down: 32.7 mm
 EndX: 0.00 in
 EndY: 0.00 in
 Area: 17.02 in²
 Max stitch: 7.0 mm
 Min stitch: 0.0 mm
 Max jump: 7.0 mm
 Total thread: 459.67ft
 Total bobbin: 145.40ft

Stop Sequence:

#	N#	Color	St.	Code	Name	Chart
1.	9		3,619	9	White	Default
2.	2		5,189		R31 G157 B230	
3.	3		2,531		R174 G220 B255	
4.	1		1,347		R86 G102 B122	
5.	5		1,904		R179 G119 B87	
6.	4		1,192		R255 G222 B183	
7.	8		16,527	8	Black	Default



Production Worksheet

Wilcom EmbroideryStudio - Designing



Design: **5**

Title:

Stitches: 40,368
Height: 4.62 in
Width: 5.51 in
Colors: 7
Colorway: Colorway 1
Zoom: 1:1



Production Worksheet

Wilcom EmbroideryStudio - Designing



Design: **5**

Title:

Stitches: 40,368
 Height: 4.62 in
 Width: 5.51 in
 Colors: 7
 Colorway: Colorway 1
 Zoom: 1:1

Machine format: Tajima
 Color changes: 6
 Stops: 7
 Trims: 120
 Appliqués: 0
 Left: 84.5 mm
 Right: 55.3 mm
 Up: 73.9 mm
 Down: 43.3 mm
 EndX: 0.00 in
 EndY: 0.00 in
 Area 25.41 in²
 Max stitch: 11.9 mm
 Min stitch: 0.0 mm
 Max jump: 7.0 mm
 Total thread: 611.11ft
 Total bobbin: 203.81ft

Stop Sequence:

#	N#	Color	St.	Code	Name	Chart
1.	9		4,581	9	White	Default
2.	2		6,640		R31 G157 B230	
3.	3		3,229		R174 G220 B255	
4.	1		1,696		R86 G102 B122	
5.	5		2,699		R179 G119 B87	
6.	4		1,480		R255 G222 B183	
7.	8		20,041	8	Black	Default

Production Worksheet

Wilcom EmbroideryStudio - Designing



Design: **6**

Title:

Stitches: 48,847
Height: 5.45 in
Width: 6.51 in
Colors: 7
Colorway: Colorway 1
Zoom: 1:1



Production Worksheet

Wilcom EmbroideryStudio - Designing



Design: **6**

Title:

Stitches: 48,847
 Height: 5.45 in
 Width: 6.51 in
 Colors: 7
 Colorway: Colorway 1
 Zoom: 1:1

Machine format: Tajima
 Color changes: 6
 Stops: 7
 Trims: 129
 Appliqués: 0
 Left: 97.2 mm
 Right: 68.0 mm
 Up: 84.5 mm
 Down: 54.0 mm
 EndX: 0.00 in
 EndY: 0.00 in
 Area 35.47 in²
 Max stitch: 7.0 mm
 Min stitch: 0.0 mm
 Max jump: 7.0 mm
 Total thread: 779.35ft
 Total bobbin: 270.54ft

Stop Sequence:

#	N#	Color	St.	Code	Name	Chart
1.	9		5,570	9	White	Default
2.	2		8,255		R31 G157 B230	
3.	3		3,955		R174 G220 B255	
4.	1		2,053		R86 G102 B122	
5.	5		3,626		R179 G119 B87	
6.	4		1,774		R255 G222 B183	
7.	8		23,612	8	Black	Default

Production Worksheet

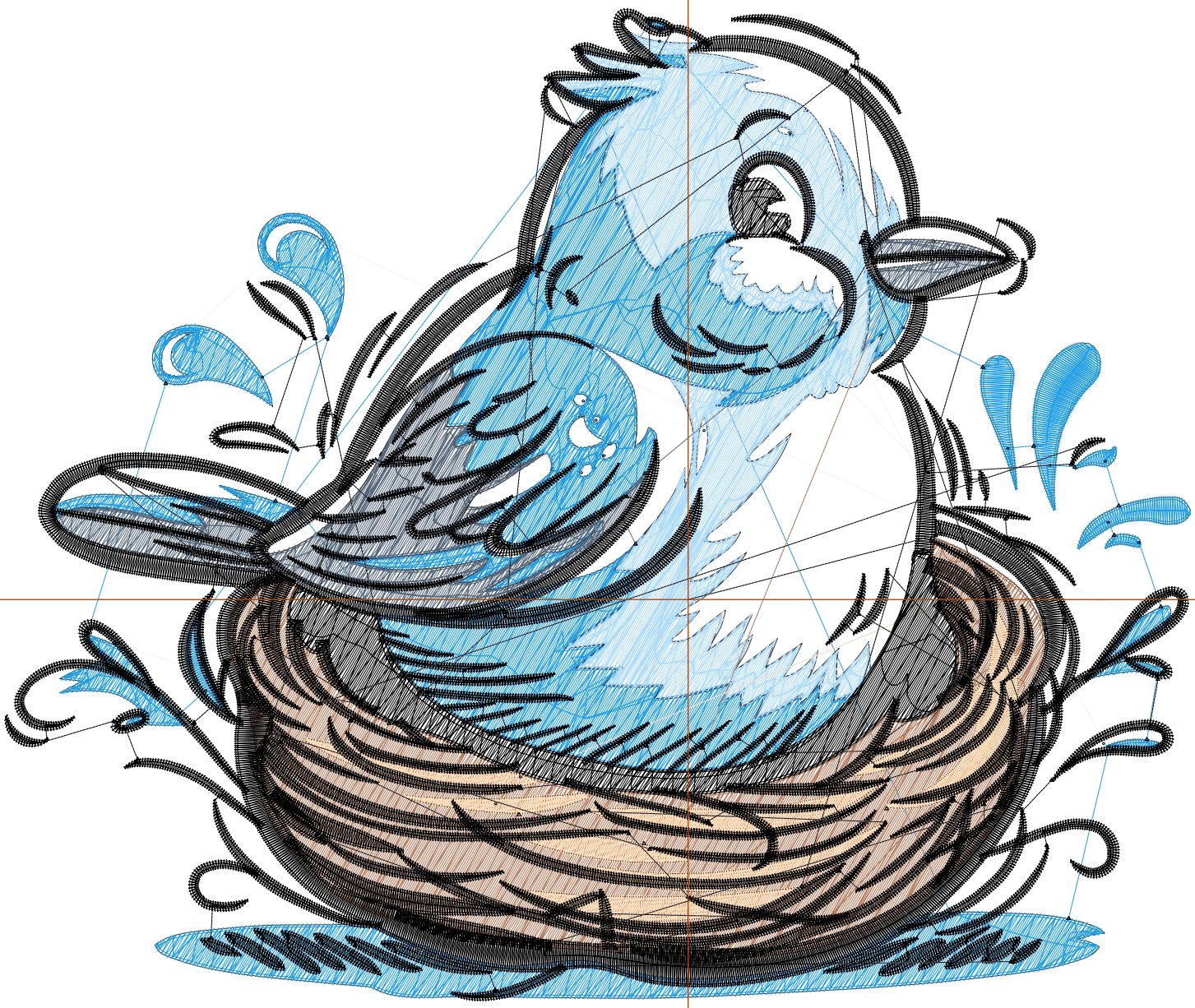
Wilcom EmbroideryStudio - Designing



Design: 7

Title:

Stitches: 57,913
Height: 6.29 in
Width: 7.51 in
Colors: 7
Colorway: Colorway 1
Zoom: 1:1



Production Worksheet

Wilcom EmbroideryStudio - Designing



Design: **7**

Title:

Stitches: 57,913
 Height: 6.29 in
 Width: 7.51 in
 Colors: 7
 Colorway: Colorway 1
 Zoom: 1:1

Machine format: Tajima
 Color changes: 6
 Stops: 7
 Trims: 144
 Appliqués: 0
 Left: 109.9 mm
 Right: 80.7 mm
 Up: 95.1 mm
 Down: 64.6 mm
 EndX: 0.00 in
 EndY: 0.00 in
 Area 47.20 in²
 Max stitch: 11.3 mm
 Min stitch: 0.0 mm
 Max jump: 6.9 mm
 Total thread: 969.11ft
 Total bobbin: 347.74ft

Stop Sequence:

#	N#	Color	St.	Code	Name	Chart
1.	9		6,660	9	White	Default
2.	2		9,976		R31 G157 B230	
3.	3		4,691		R174 G220 B255	
4.	1		2,483		R86 G102 B122	
5.	5		4,654		R179 G119 B87	
6.	4		2,066		R255 G222 B183	
7.	8		27,381	8	Black	Default