

# Production Worksheet

Wilcom EmbroideryStudio - Designing



Design: **7 inch**

Title:

Stitches: 27,518  
Height: 3.97 in  
Width: 7.00 in  
Colors: 6  
Colorway: Colorway 1  
Zoom: 1:1



# Production Worksheet

Wilcom EmbroideryStudio - Designing



Design: **7 inch**

Title:

Stitches: 27,518  
 Height: 3.97 in  
 Width: 7.00 in  
 Colors: 6  
 Colorway: Colorway 1  
 Zoom: 1:1

Machine format: Tajima  
 Color changes: 5  
 Stops: 6  
 Trims: 90  
 Appliqués: 0  
 Left: 85.9 mm  
 Right: 91.9 mm  
 Up: 61.7 mm  
 Down: 39.2 mm  
 EndX: 0.00 in  
 EndY: 0.00 in  
 Area 27.82 in<sup>2</sup>  
 Max stitch: 6.9 mm  
 Min stitch: 0.0 mm  
 Max jump: 6.9 mm  
 Total thread: 460.46ft  
 Total bobbin: 164.70ft

Stop Sequence:

#	N#	Color	St.	Code	Name	Chart
1.	14		241		R153 G102 B51	
2.	1		4,787	1	Dark Green	Default
3.	4		9,913		R255 G219 B182	
4.	12		2,446		R255 G153 B51	
5.	15		1,544		R255 G150 B159	
6.	8		8,585		R0 G0 B0	

# Production Worksheet

Wilcom EmbroideryStudio - Designing



Design: **8 inch**

Title:

Stitches: 32,442  
Height: 4.54 in  
Width: 8.00 in  
Colors: 6  
Colorway: Colorway 1  
Zoom: 1:1



# Production Worksheet

Wilcom EmbroideryStudio - Designing



Design: **8 inch**

Title:

Stitches: 32,442  
 Height: 4.54 in  
 Width: 8.00 in  
 Colors: 6  
 Colorway: Colorway 1  
 Zoom: 1:1

Machine format: Tajima  
 Color changes: 5  
 Stops: 6  
 Trims: 93  
 Appliqués: 0  
 Left: 98.6 mm  
 Right: 104.6 mm  
 Up: 68.9 mm  
 Down: 46.5 mm  
 EndX: 0.00 in  
 EndY: 0.00 in  
 Area 36.33 in<sup>2</sup>  
 Max stitch: 7.0 mm  
 Min stitch: 0.1 mm  
 Max jump: 7.0 mm  
 Total thread: 563.80ft  
 Total bobbin: 206.79ft

Stop Sequence:

#	N#	Color	St.	Code	Name	Chart
1.	14		286		R153 G102 B51	
2.	1		5,468	1	Dark Green	Default
3.	4		12,504		R255 G219 B182	
4.	12		2,797		R255 G153 B51	
5.	15		1,826		R255 G150 B159	
6.	8		9,559		R0 G0 B0	

# Production Worksheet

Wilcom EmbroideryStudio - Designing



Design: **9 inch**

Title:

Stitches: 37,961  
Height: 5.11 in  
Width: 9.00 in  
Colors: 6  
Colorway: Colorway 1  
Zoom: 1:1

1 1  
1 1



2 2  
2 2

# Production Worksheet

Wilcom EmbroideryStudio - Designing



Design: **9 inch**

Title:

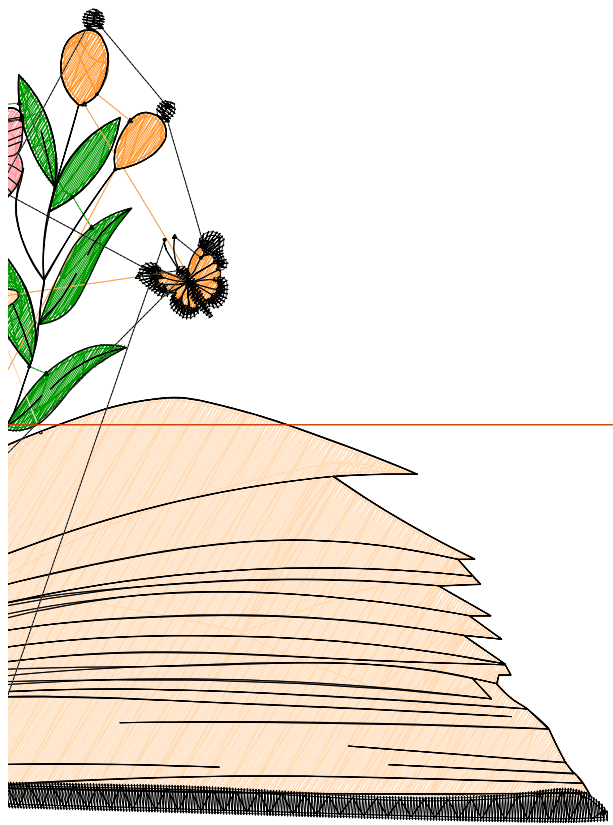
Stitches: 37,961  
 Height: 5.11 in  
 Width: 9.00 in  
 Colors: 6  
 Colorway: Colorway 1  
 Zoom: 1:1

1 1  
 1 1

Machine format: Tajima  
 Color changes: 5  
 Stops: 6  
 Trims: 95  
 Appliqués: 0  
 Left: 111.3 mm  
 Right: 117.3 mm  
 Up: 76.1 mm  
 Down: 53.7 mm  
 EndX: 0.00 in  
 EndY: 0.00 in  
 Area: 45.97 in<sup>2</sup>  
 Max stitch: 9.2 mm  
 Min stitch: 0.0 mm  
 Max jump: 6.9 mm  
 Total thread: 680.86ft  
 Total bobbin: 254.70ft

Stop Sequence:

#	N#	Color	St.	Code	Name	Chart
1.	14		336		R153 G102 B51	
2.	1		6,282	1	Dark Green	Default
3.	4		15,395		R255 G219 B182	
4.	12		3,259		R255 G153 B51	
5.	15		2,134		R255 G150 B159	
6.	8		10,553		R0 G0 B0	



2 2  
 2 2

# Production Worksheet

Wilcom EmbroideryStudio - Designing



Design: **10 inch**

Title:

Stitches: 43,675  
Height: 5.67 in  
Width: 10.00 in  
Colors: 6  
Colorway: Colorway 1  
Zoom: 1:1

1 1  
1 1



2 2  
2 2

# Production Worksheet

Wilcom EmbroideryStudio - Designing



Design: **10 inch**

Title:

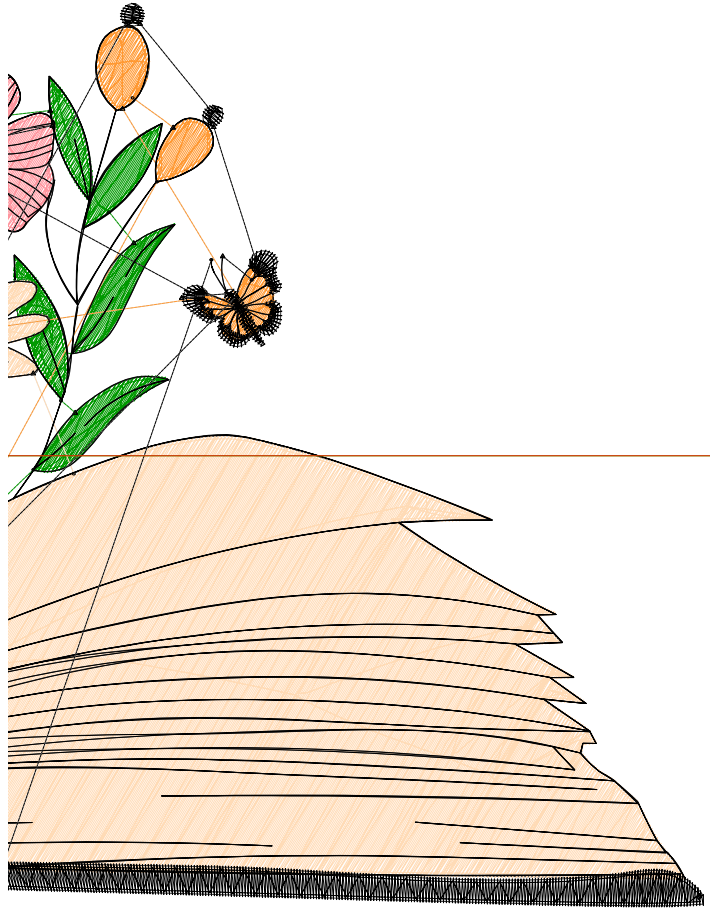
Stitches: 43,675  
 Height: 5.67 in  
 Width: 10.00 in  
 Colors: 6  
 Colorway: Colorway 1  
 Zoom: 1:1

1 1  
 1 1

Machine format: Tajima  
 Color changes: 5  
 Stops: 6  
 Trims: 97  
 Appliqués: 0  
 Left: 124.0 mm  
 Right: 130.0 mm  
 Up: 83.3 mm  
 Down: 60.8 mm  
 EndX: 0.00 in  
 EndY: 0.00 in  
 Area: 56.74 in<sup>2</sup>  
 Max stitch: 9.0 mm  
 Min stitch: 0.0 mm  
 Max jump: 7.0 mm  
 Total thread: 804.79ft  
 Total bobbin: 305.92ft

Stop Sequence:

#	N#	Color	St.	Code	Name	Chart
1.	14		392		R153 G102 B51	
2.	1		7,107	1	Dark Green	Default
3.	4		18,442		R255 G219 B182	
4.	12		3,704		R255 G153 B51	
5.	15		2,458		R255 G150 B159	
6.	8		11,570		R0 G0 B0	



2 2  
 2 2