

# Production Worksheet

Wilcom EmbroideryStudio - Designing



Design: **3**

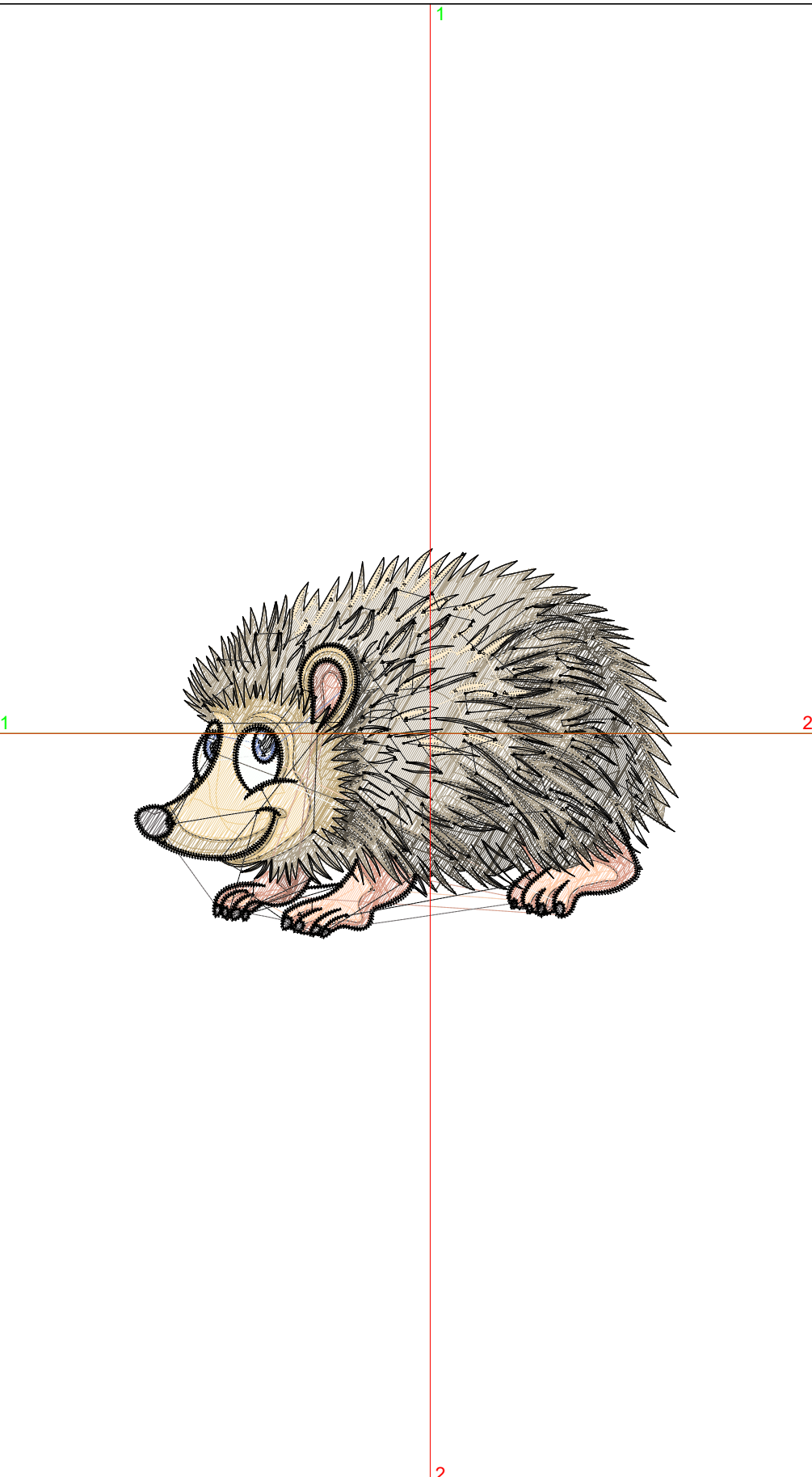
Title:

Stitches: 23,096  
 Height: 2.51 in  
 Width: 3.51 in  
 Colors: 12  
 Colorway: Colorway 1  
 Zoom: 1:1

Machine format: Tajima  
 Color changes: 11  
 Stops: 12  
 Trims: 146  
 Appliqués: 0  
 Left: 48.5 mm  
 Right: 40.6 mm  
 Up: 30.2 mm  
 Down: 33.6 mm  
 EndX: 0.00 in  
 EndY: 0.00 in  
 Area: 8.81 in<sup>2</sup>  
 Max stitch: 10.8 mm  
 Min stitch: 0.1 mm  
 Max jump: 6.9 mm  
 Total thread: 293.40ft  
 Total bobbin: 81.73ft

Stop Sequence:

#	N#	Color	St.	Code	Name	Chart
1.	2		733		R240 G211 B153	
2.	3		1,566		R191 G168 B122	
3.	4		548		R255 G205 B172	
4.	5		1,095		R217 G154 B134	
5.	6		228		R166 G117 B102	
6.	7		114		R113 G133 B189	
7.	10		272		R102 G97 B98	
8.	11		238		R251 G255 B252	
9.	12		4,974		R87 G81 B70	
10.	13		6,449		R171 G159 B137	
11.	14		1,289		R255 G237 B204	
12.	15		5,588		R0 G0 B0	



# Production Worksheet

Wilcom EmbroideryStudio - Designing



Design: **4**

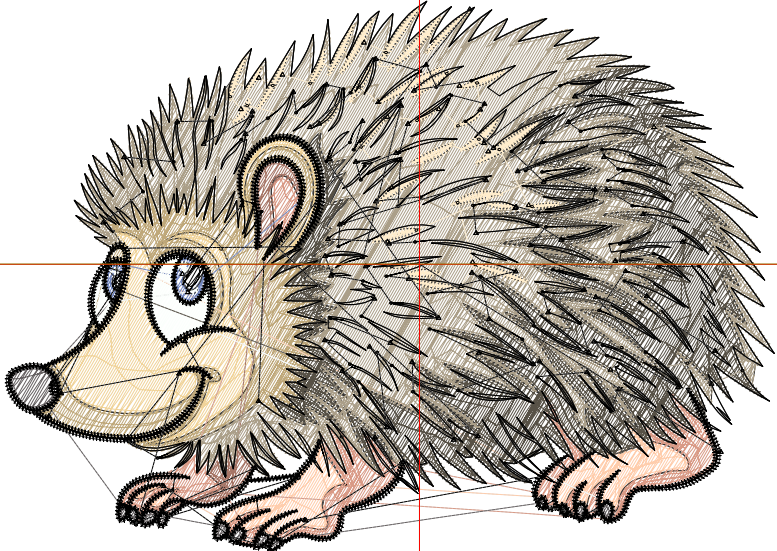
Title:

Stitches: 26,236  
 Height: 2.87 in  
 Width: 4.01 in  
 Colors: 12  
 Colorway: Colorway 1  
 Zoom: 1:1

Machine format: Tajima  
 Color changes: 11  
 Stops: 12  
 Trims: 155  
 Appliqués: 0  
 Left: 54.8 mm  
 Right: 47.0 mm  
 Up: 34.8 mm  
 Down: 38.2 mm  
 EndX: 0.00 in  
 EndY: 0.00 in  
 Area: 11.50 in<sup>2</sup>  
 Max stitch: 10.3 mm  
 Min stitch: 0.0 mm  
 Max jump: 6.9 mm  
 Total thread: 342.72ft  
 Total bobbin: 98.74ft

Stop Sequence:

#	N#	Color	St.	Code	Name	Chart
1.	2		847		R240 G211 B153	
2.	3		1,809		R191 G168 B122	
3.	4		605		R255 G205 B172	
4.	5		1,246		R217 G154 B134	
5.	6		260		R166 G117 B102	
6.	7		122		R113 G133 B189	
7.	10		322		R102 G97 B98	
8.	11		261		R251 G255 B252	
9.	12		5,756		R87 G81 B70	
10.	13		7,434		R171 G159 B137	
11.	14		1,455		R255 G237 B204	
12.	15		6,117		R0 G0 B0	



# Production Worksheet

Wilcom EmbroideryStudio - Designing



Design: **4**

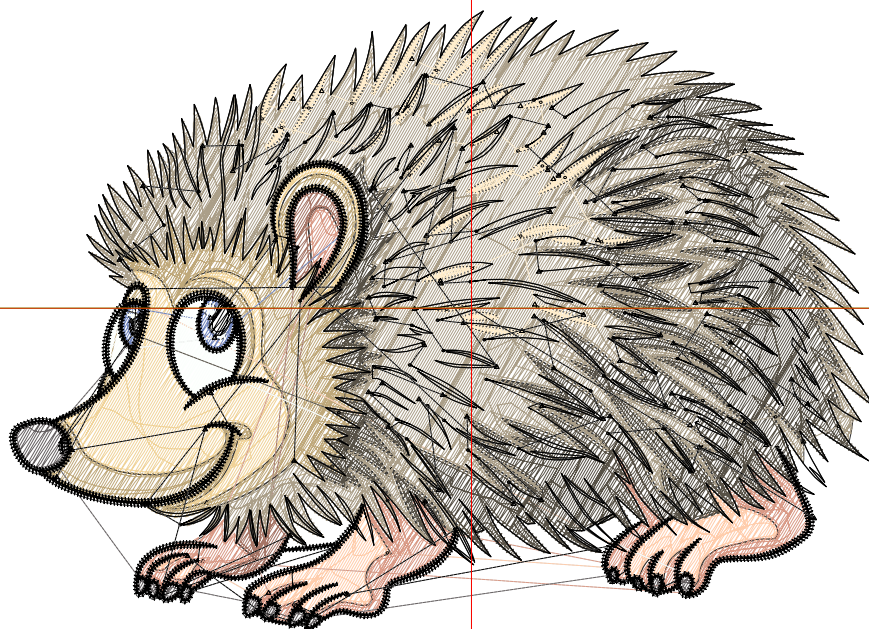
Title:

Stitches: 29,602  
 Height: 3.23 in  
 Width: 4.51 in  
 Colors: 12  
 Colorway: Colorway 1  
 Zoom: 1:1

Machine format: Tajima  
 Color changes: 11  
 Stops: 12  
 Trims: 159  
 Appliqués: 0  
 Left: 61.2 mm  
 Right: 53.3 mm  
 Up: 39.3 mm  
 Down: 42.7 mm  
 EndX: 0.00 in  
 EndY: 0.00 in  
 Area: 14.56 in<sup>2</sup>  
 Max stitch: 11.5 mm  
 Min stitch: 0.1 mm  
 Max jump: 6.9 mm  
 Total thread: 397.32ft  
 Total bobbin: 118.01ft

Stop Sequence:

#	N#	Color	St.	Code	Name	Chart
1.	2		978	R240 G211 B153		
2.	3		2,071	R191 G168 B122		
3.	4		696	R255 G205 B172		
4.	5		1,399	R217 G154 B134		
5.	6		293	R166 G117 B102		
6.	7		136	R113 G133 B189		
7.	10		344	R102 G97 B98		
8.	11		304	R251 G255 B252		
9.	12		6,552	R87 G81 B70		
10.	13		8,583	R171 G159 B137		
11.	14		1,591	R255 G237 B204		
12.	15		6,653	R0 G0 B0		



# Production Worksheet

Wilcom EmbroideryStudio - Designing



Design: **5**

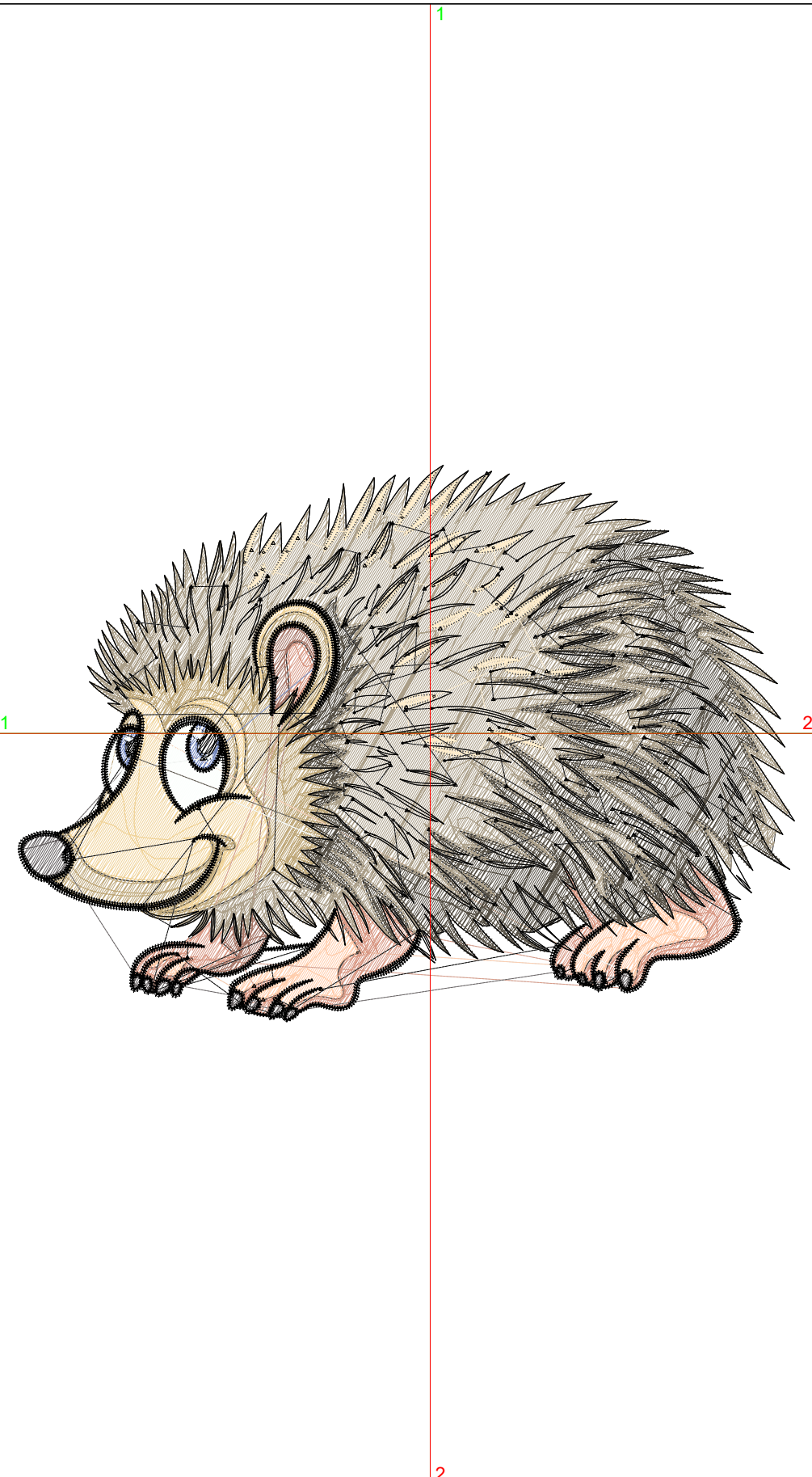
Title:

Stitches: 33,033  
 Height: 3.59 in  
 Width: 5.01 in  
 Colors: 12  
 Colorway: Colorway 1  
 Zoom: 1:1

Machine format: Tajima  
 Color changes: 11  
 Stops: 12  
 Trims: 170  
 Appliqués: 0  
 Left: 67.5 mm  
 Right: 59.7 mm  
 Up: 43.9 mm  
 Down: 47.3 mm  
 EndX: 0.00 in  
 EndY: 0.00 in  
 Area 17.97 in<sup>2</sup>  
 Max stitch: 11.7 mm  
 Min stitch: 0.1 mm  
 Max jump: 6.7 mm  
 Total thread: 453.09ft  
 Total bobbin: 137.72ft

Stop Sequence:

#	N#	Color	St.	Code	Name	Chart
1.	2		1,126	R240	G211 B153	
2.	3		2,318	R191	G168 B122	
3.	4		801	R255	G205 B172	
4.	5		1,600	R217	G154 B134	
5.	6		308	R166	G117 B102	
6.	7		150	R113	G133 B189	
7.	10		389	R102	G97 B98	
8.	11		342	R251	G255 B252	
9.	12		7,313	R87	G81 B70	
10.	13		9,740	R171	G159 B137	
11.	14		1,752	R255	G237 B204	
12.	15		7,192	R0	G0 B0	



# Production Worksheet

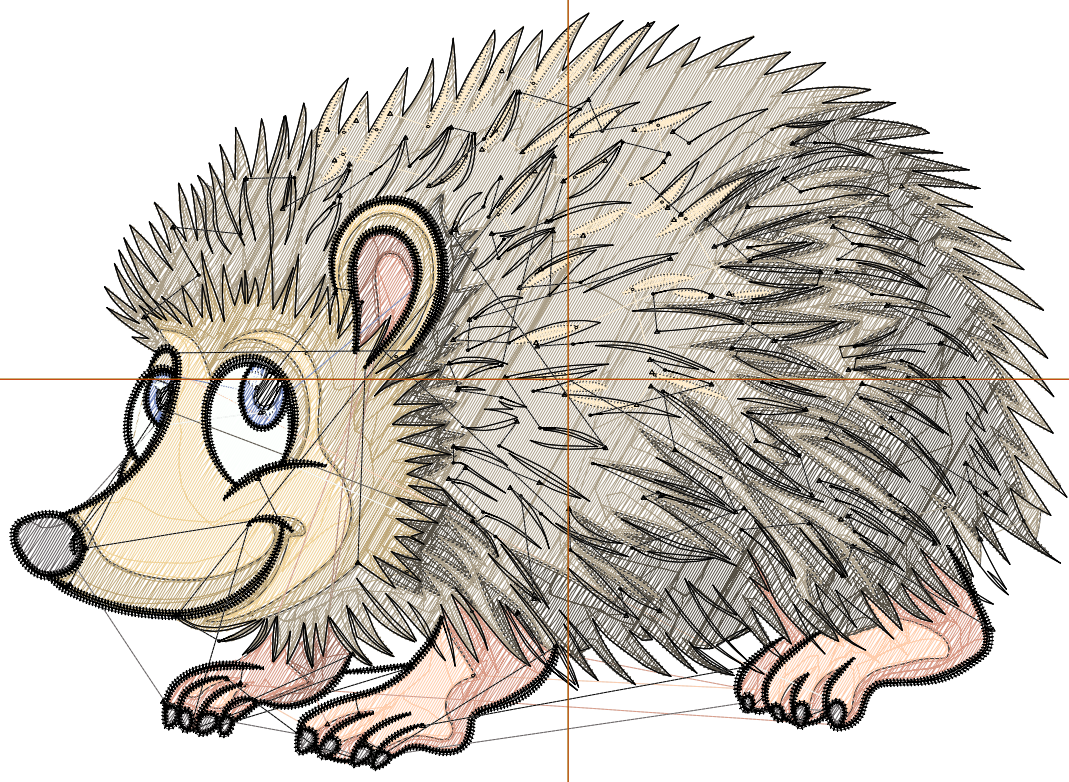
Wilcom EmbroideryStudio - Designing



Design: **5**

Title:

Stitches: 36,585  
Height: 3.95 in  
Width: 5.51 in  
Colors: 12  
Colorway: Colorway 1  
Zoom: 1:1



# Production Worksheet

Wilcom EmbroideryStudio - Designing



Design: **5**

Title:

Stitches: 36,585  
 Height: 3.95 in  
 Width: 5.51 in  
 Colors: 12  
 Colorway: Colorway 1  
 Zoom: 1:1

Machine format: Tajima  
 Color changes: 11  
 Stops: 12  
 Trims: 173  
 Appliqués: 0  
 Left: 73.9 mm  
 Right: 66.0 mm  
 Up: 48.5 mm  
 Down: 51.8 mm  
 EndX: 0.00 in  
 EndY: 0.00 in  
 Area 21.74 in<sup>2</sup>  
 Max stitch: 8.1 mm  
 Min stitch: 0.2 mm  
 Max jump: 6.9 mm  
 Total thread: 513.09ft  
 Total bobbin: 159.46ft

Stop Sequence:

#	N#	Color	St.	Code	Name	Chart
1.	2		1,274		R240 G211 B153	
2.	3		2,620		R191 G168 B122	
3.	4		877		R255 G205 B172	
4.	5		1,768		R217 G154 B134	
5.	6		343		R166 G117 B102	
6.	7		165		R113 G133 B189	
7.	10		437		R102 G97 B98	
8.	11		376		R251 G255 B252	
9.	12		8,113		R87 G81 B70	
10.	13		10,994		R171 G159 B137	
11.	14		1,885		R255 G237 B204	
12.	15		7,731		R0 G0 B0	

# Production Worksheet

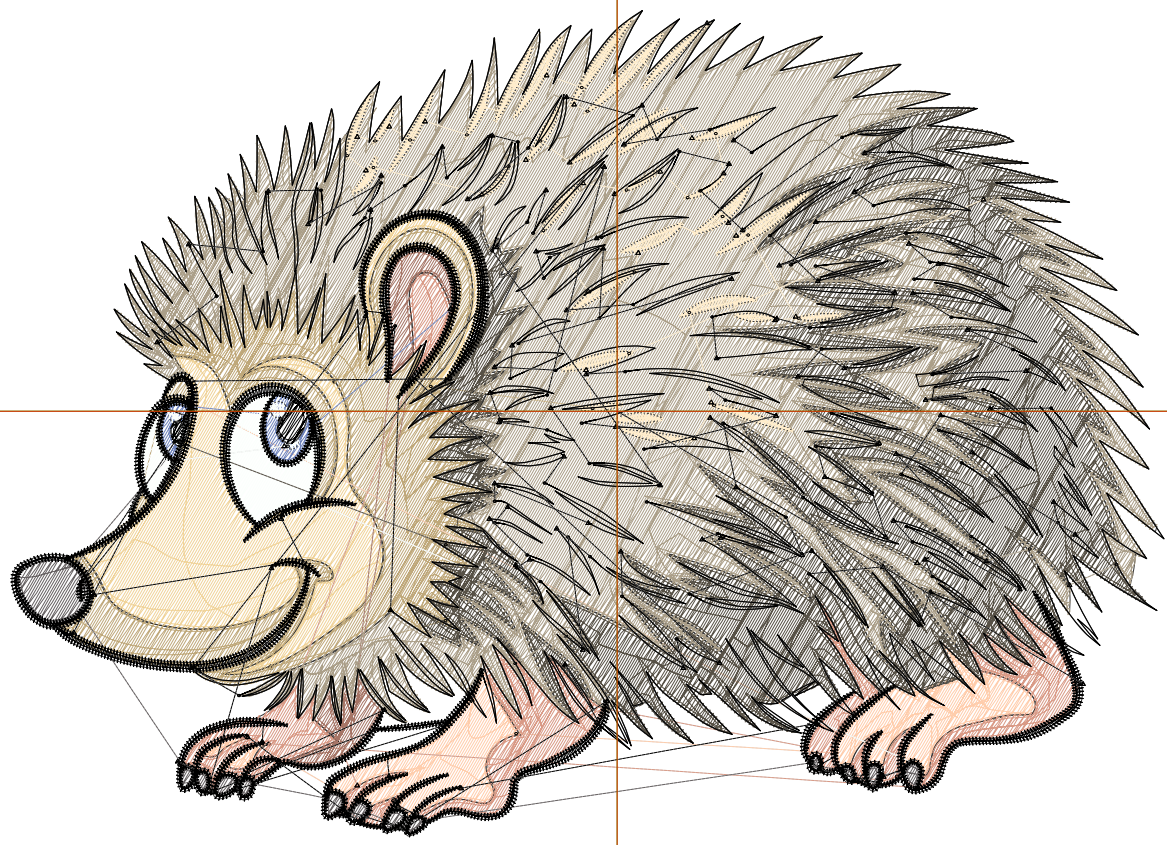
Wilcom EmbroideryStudio - Designing



Design: **6**

Title:

Stitches: 40,169  
Height: 4.31 in  
Width: 6.01 in  
Colors: 12  
Colorway: Colorway 1  
Zoom: 1:1



# Production Worksheet

Wilcom EmbroideryStudio - Designing



Design: **6**

Title:

Stitches: 40,169  
 Height: 4.31 in  
 Width: 6.01 in  
 Colors: 12  
 Colorway: Colorway 1  
 Zoom: 1:1

Machine format: Tajima  
 Color changes: 11  
 Stops: 12  
 Trims: 177  
 Appliqués: 0  
 Left: 80.2 mm  
 Right: 72.4 mm  
 Up: 53.0 mm  
 Down: 56.4 mm  
 EndX: 0.00 in  
 EndY: 0.00 in  
 Area 25.86 in<sup>2</sup>  
 Max stitch: 10.8 mm  
 Min stitch: 0.2 mm  
 Max jump: 7.0 mm  
 Total thread: 575.79ft  
 Total bobbin: 182.68ft

Stop Sequence:

#	N#	Color	St.	Code	Name	Chart
1.	2		1,415		R240 G211 B153	
2.	3		2,874		R191 G168 B122	
3.	4		978		R255 G205 B172	
4.	5		1,948		R217 G154 B134	
5.	6		396		R166 G117 B102	
6.	7		178		R113 G133 B189	
7.	10		469		R102 G97 B98	
8.	11		407		R251 G255 B252	
9.	12		8,965		R87 G81 B70	
10.	13		12,270		R171 G159 B137	
11.	14		2,028		R255 G237 B204	
12.	15		8,239		R0 G0 B0	

# Production Worksheet

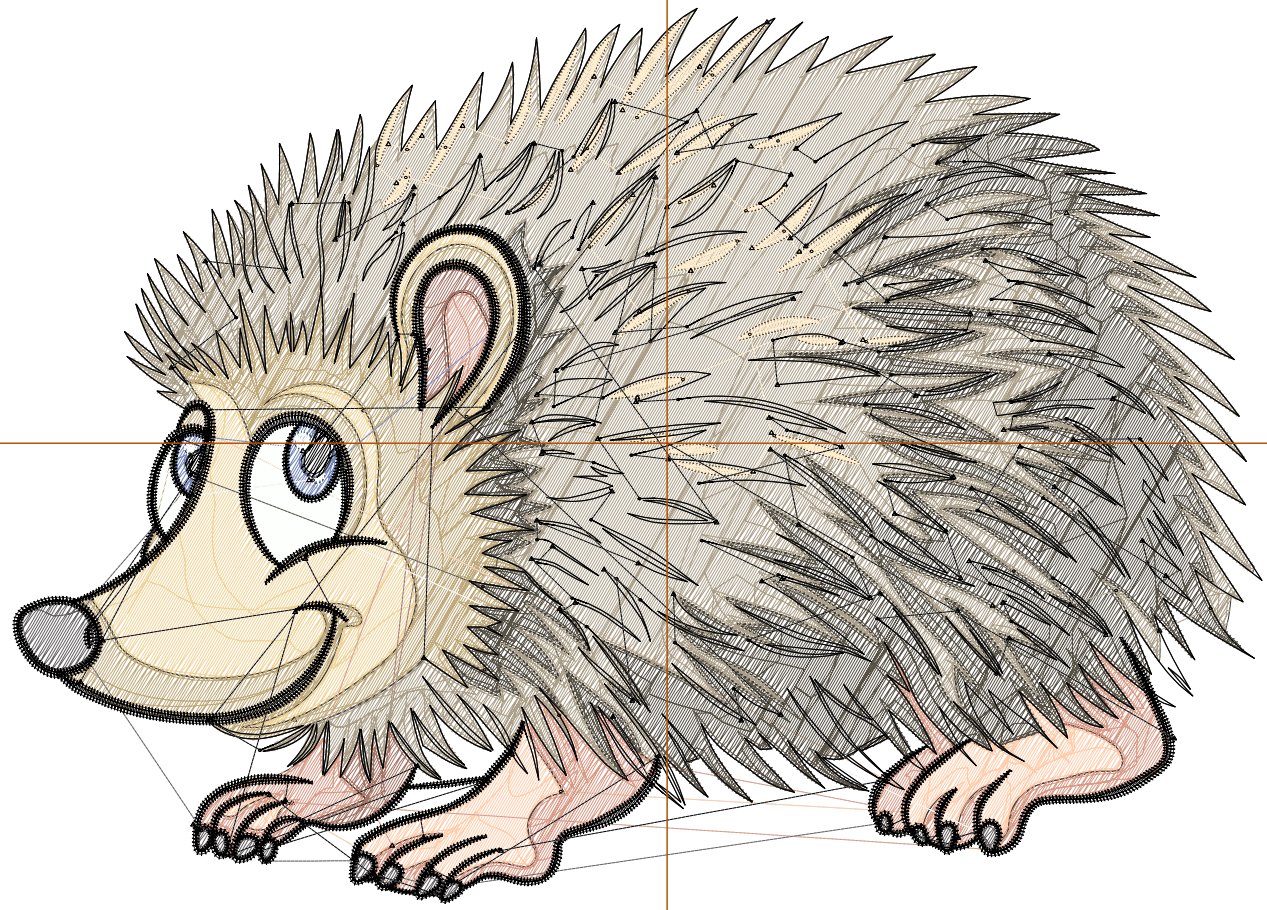
Wilcom EmbroideryStudio - Designing



Design: **6**

Title:

Stitches: 43,890  
Height: 4.66 in  
Width: 6.51 in  
Colors: 12  
Colorway: Colorway 1  
Zoom: 1:1



# Production Worksheet

Wilcom EmbroideryStudio - Designing



Design: **6**

Title:

Stitches: 43,890  
 Height: 4.66 in  
 Width: 6.51 in  
 Colors: 12  
 Colorway: Colorway 1  
 Zoom: 1:1

Machine format: Tajima  
 Color changes: 11  
 Stops: 12  
 Trims: 181  
 Appliqués: 0  
 Left: 86.6 mm  
 Right: 78.7 mm  
 Up: 57.5 mm  
 Down: 60.9 mm  
 EndX: 0.00 in  
 EndY: 0.00 in  
 Area 30.34 in<sup>2</sup>  
 Max stitch: 8.6 mm  
 Min stitch: 0.3 mm  
 Max jump: 7.0 mm  
 Total thread: 640.32ft  
 Total bobbin: 206.45ft

Stop Sequence:

#	N#	Color	St.	Code	Name	Chart
1.	2		1,594		R240 G211 B153	
2.	3		3,188		R191 G168 B122	
3.	4		1,083		R255 G205 B172	
4.	5		2,144		R217 G154 B134	
5.	6		413		R166 G117 B102	
6.	7		185		R113 G133 B189	
7.	10		522		R102 G97 B98	
8.	11		442		R251 G255 B252	
9.	12		9,824		R87 G81 B70	
10.	13		13,505		R171 G159 B137	
11.	14		2,213		R255 G237 B204	
12.	15		8,775		R0 G0 B0	

# Production Worksheet

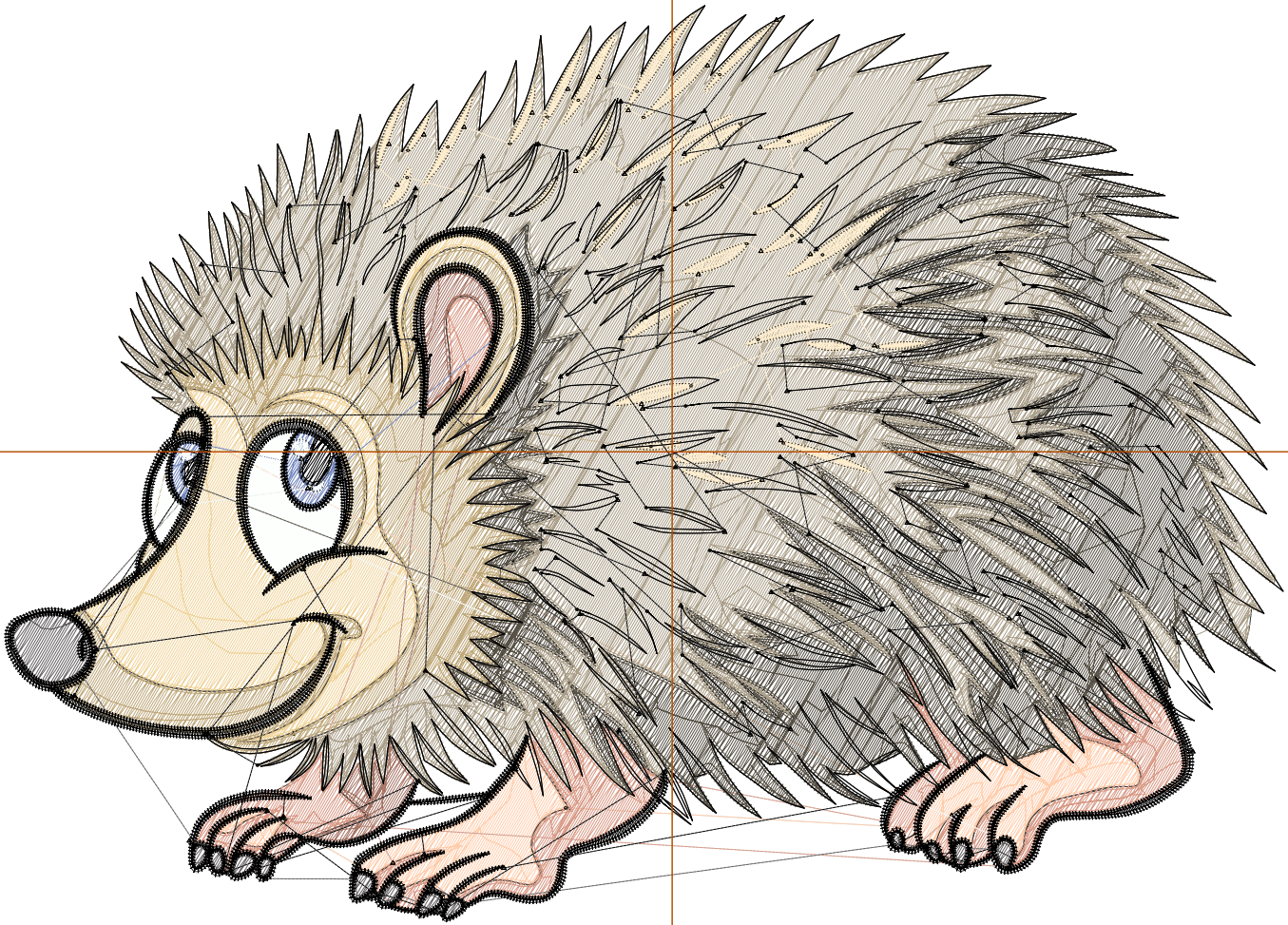
Wilcom EmbroideryStudio - Designing



Design: **7**

Title:

Stitches: 47,633  
Height: 5.02 in  
Width: 7.01 in  
Colors: 12  
Colorway: Colorway 1  
Zoom: 1:1



# Production Worksheet

Wilcom EmbroideryStudio - Designing



Design: **7**

Title:

Stitches: 47,633  
 Height: 5.02 in  
 Width: 7.01 in  
 Colors: 12  
 Colorway: Colorway 1  
 Zoom: 1:1

Machine format: Tajima  
 Color changes: 11  
 Stops: 12  
 Trims: 187  
 Appliqués: 0  
 Left: 92.9 mm  
 Right: 85.1 mm  
 Up: 62.1 mm  
 Down: 65.5 mm  
 EndX: 0.00 in  
 EndY: 0.00 in  
 Area 35.18 in<sup>2</sup>  
 Max stitch: 10.3 mm  
 Min stitch: 0.2 mm  
 Max jump: 7.0 mm  
 Total thread: 708.87ft  
 Total bobbin: 232.52ft

Stop Sequence:

#	N#	Color	St.	Code	Name	Chart
1.	2		1,750		R240 G211 B153	
2.	3		3,478		R191 G168 B122	
3.	4		1,192		R255 G205 B172	
4.	5		2,322		R217 G154 B134	
5.	6		466		R166 G117 B102	
6.	7		224		R113 G133 B189	
7.	10		548		R102 G97 B98	
8.	11		495		R251 G255 B252	
9.	12		10,649		R87 G81 B70	
10.	13		14,821		R171 G159 B137	
11.	14		2,370		R255 G237 B204	
12.	15		9,316		R0 G0 B0	

# Production Worksheet

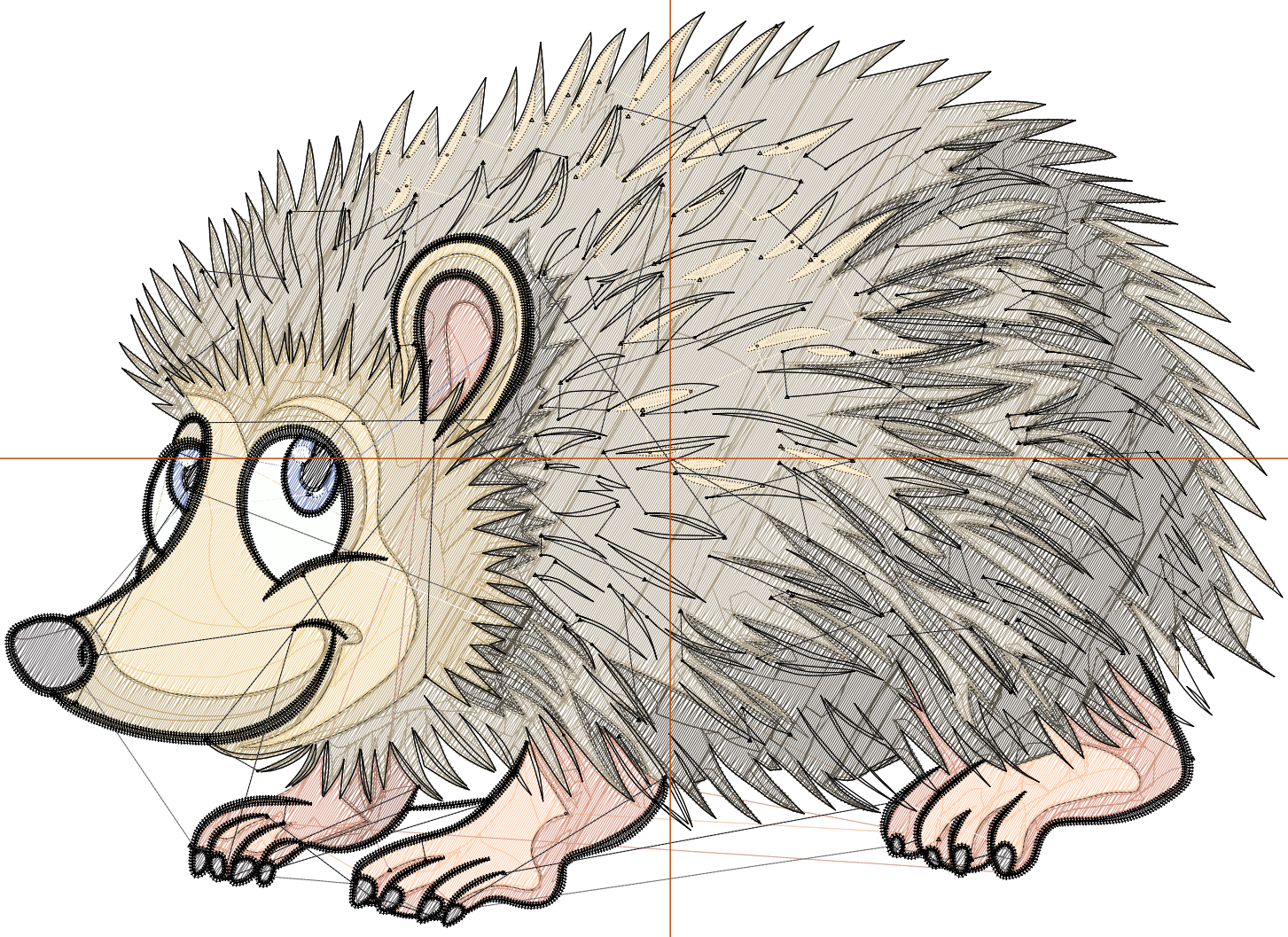
Wilcom EmbroideryStudio - Designing



Design: **7**

Title:

Stitches: 51,496  
Height: 5.38 in  
Width: 7.51 in  
Colors: 12  
Colorway: Colorway 1  
Zoom: 1:1



# Production Worksheet

Wilcom EmbroideryStudio - Designing



Design: **7**

Title:

Stitches: 51,496  
 Height: 5.38 in  
 Width: 7.51 in  
 Colors: 12  
 Colorway: Colorway 1  
 Zoom: 1:1

Machine format: Tajima  
 Color changes: 11  
 Stops: 12  
 Trims: 188  
 Appliqués: 0  
 Left: 99.3 mm  
 Right: 91.4 mm  
 Up: 66.6 mm  
 Down: 70.0 mm  
 EndX: 0.00 in  
 EndY: 0.00 in  
 Area 40.38 in<sup>2</sup>  
 Max stitch: 8.2 mm  
 Min stitch: 0.3 mm  
 Max jump: 6.9 mm  
 Total thread: 779.68ft  
 Total bobbin: 259.46ft

Stop Sequence:

#	N#	Color	St.	Code	Name	Chart
1.	2		1,912		R240 G211 B153	
2.	3		3,776		R191 G168 B122	
3.	4		1,278		R255 G205 B172	
4.	5		2,530		R217 G154 B134	
5.	6		500		R166 G117 B102	
6.	7		218		R113 G133 B189	
7.	10		593		R102 G97 B98	
8.	11		536		R251 G255 B252	
9.	12		11,590		R87 G81 B70	
10.	13		16,198		R171 G159 B137	
11.	14		2,520		R255 G237 B204	
12.	15		9,843		R0 G0 B0	