

Production Worksheet

Wilcom EmbroideryStudio - Designing



Design: **3**

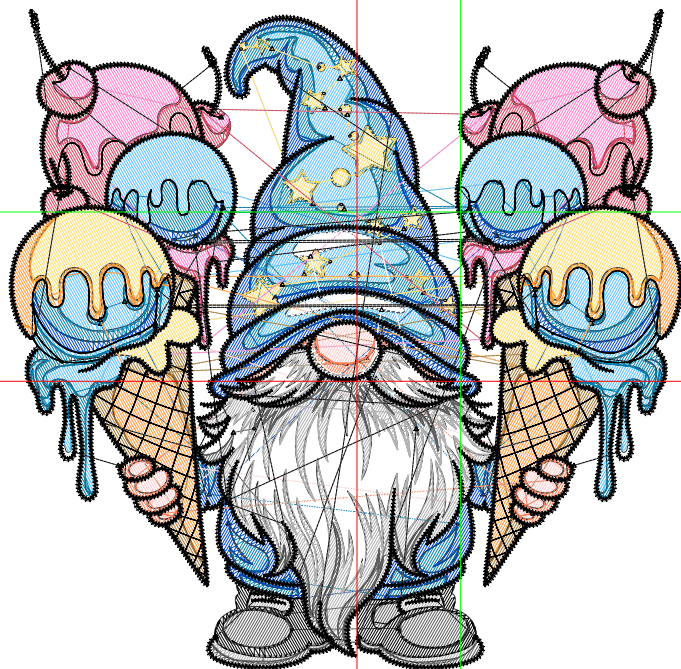
Title:

Stitches: 33,647
 Height: 3.44 in
 Width: 3.51 in
 Colors: 14
 Colorway: Colorway 1
 Zoom: 1:1

Machine format: Tajima
 Color changes: 13
 Stops: 14
 Trims: 163
 Appliqués: 0
 Left: 59.7 mm
 Right: 29.5 mm
 Up: 26.7 mm
 Down: 60.6 mm
 EndX: -0.54 in
 EndY: -0.88 in
 Area 12.09 in²
 Max stitch: 7.0 mm
 Min stitch: 0.0 mm
 Max jump: 7.0 mm
 Total thread: 389.54ft
 Total bobbin: 97.28ft

Stop Sequence:

#	N#	Color	St.	Code	Name	Chart
1.	5		2,656	5	Aqua	Default
2.	2		2,901	1497		Madeira Classic 40
3.	10		2,530	10	Dark Blue	Default
4.	13		1,402	1124	Buttercup	Madeira Classic 40
5.	12		1,091	12	Orange	Default
6.	14		533	1491		Madeira Classic 40
7.	15		877	15	Pink	Default
8.	11		1,302	1154	Lipstick Rose	Madeira Classic 40
9.	16		357	16	Sand	Default
10.	17		489	17	Turquoise	Default
11.	9		1,917	9	White	Default
12.	4		2,889	4	Yellow	Default
13.	7		1,112	7	Green	Default
14.	8		13,589	8	Black	Default



Production Worksheet

Wilcom EmbroideryStudio - Designing



Design: **4**

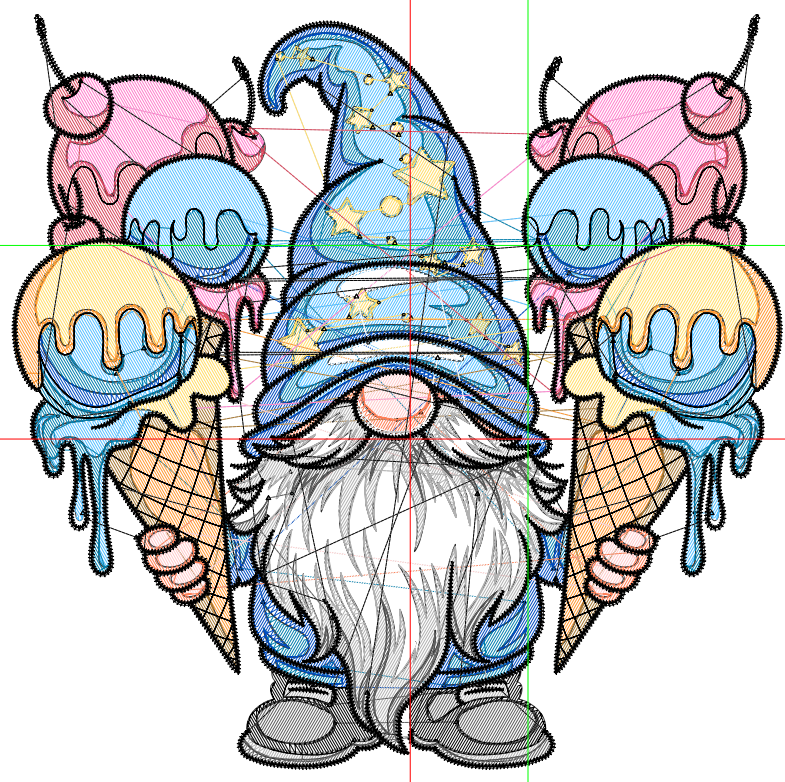
Title:

Stitches: 38,596
 Height: 3.93 in
 Width: 4.01 in
 Colors: 14
 Colorway: Colorway 1
 Zoom: 1:1

Machine format: Tajima
 Color changes: 13
 Stops: 14
 Trims: 170
 Appliqués: 0
 Left: 68.3 mm
 Right: 33.7 mm
 Up: 30.6 mm
 Down: 69.3 mm
 EndX: -0.61 in
 EndY: -1.01 in
 Area 15.78 in²
 Max stitch: 6.8 mm
 Min stitch: 0.0 mm
 Max jump: 6.8 mm
 Total thread: 456.44ft
 Total bobbin: 117.68ft

Stop Sequence:

#	N#	Color	St.	Code	Name	Chart
1.	5		3,225	5	Aqua	Default
2.	2		3,372	1497		Madeira Classic 40
3.	10		3,021	10	Dark Blue	Default
4.	13		1,586	1124	Buttercup	Madeira Classic 40
5.	12		1,234	12	Orange	Default
6.	14		637	1491		Madeira Classic 40
7.	15		1,045	15	Pink	Default
8.	11		1,538	1154	Lipstick Rose	Madeira Classic 40
9.	16		413	16	Sand	Default
10.	17		588	17	Turquoise	Default
11.	9		2,268	9	White	Default
12.	4		3,285	4	Yellow	Default
13.	7		1,265	7	Green	Default
14.	8		15,117	8	Black	Default



Production Worksheet

Wilcom EmbroideryStudio - Designing



Design: **4**

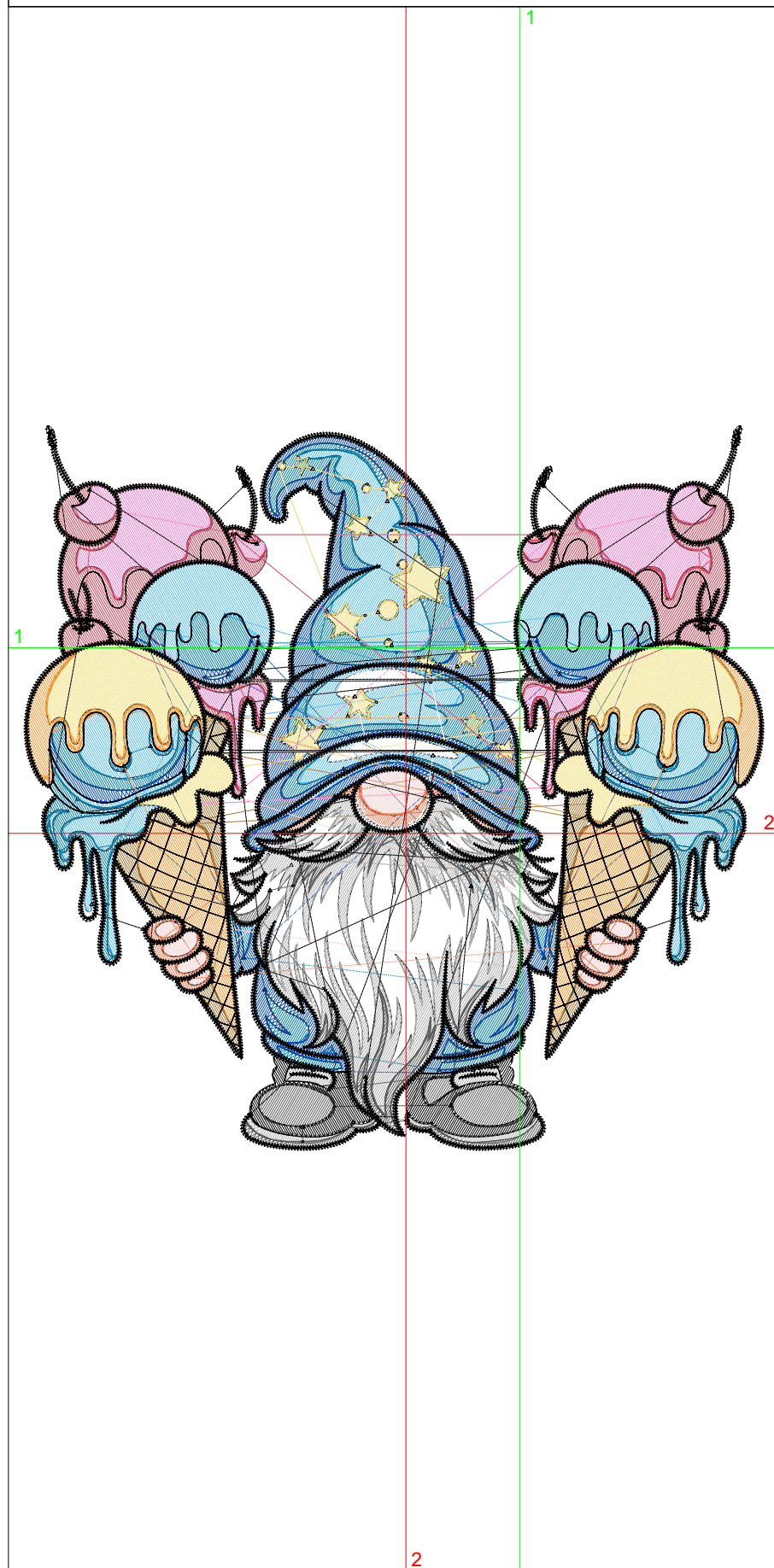
Title:

Stitches: 44,080
 Height: 4.42 in
 Width: 4.51 in
 Colors: 14
 Colorway: Colorway 1
 Zoom: 1:1

Machine format: Tajima
 Color changes: 13
 Stops: 14
 Trims: 181
 Appliqués: 0
 Left: 76.8 mm
 Right: 37.9 mm
 Up: 34.4 mm
 Down: 77.9 mm
 EndX: -0.69 in
 EndY: -1.13 in
 Area: 19.95 in²
 Max stitch: 7.0 mm
 Min stitch: 0.0 mm
 Max jump: 7.0 mm
 Total thread: 531.55ft
 Total bobbin: 140.87ft

Stop Sequence:

#	N#	Color	St.	Code	Name	Chart
1.	5		3,784	5	Aqua	Default
2.	2		3,931	1497		Madeira Classic 40
3.	10		3,489	10	Dark Blue	Default
4.	13		1,876	1124	Buttercup	Madeira Classic 40
5.	12		1,468	12	Orange	Default
6.	14		732	1491		Madeira Classic 40
7.	15		1,234	15	Pink	Default
8.	11		1,792	1154	Lipstick Rose	Madeira Classic 40
9.	16		478	16	Sand	Default
10.	17		663	17	Turquoise	Default
11.	9		2,612	9	White	Default
12.	4		3,707	4	Yellow	Default
13.	7		1,494	7	Green	Default
14.	8		16,818	8	Black	Default



Production Worksheet

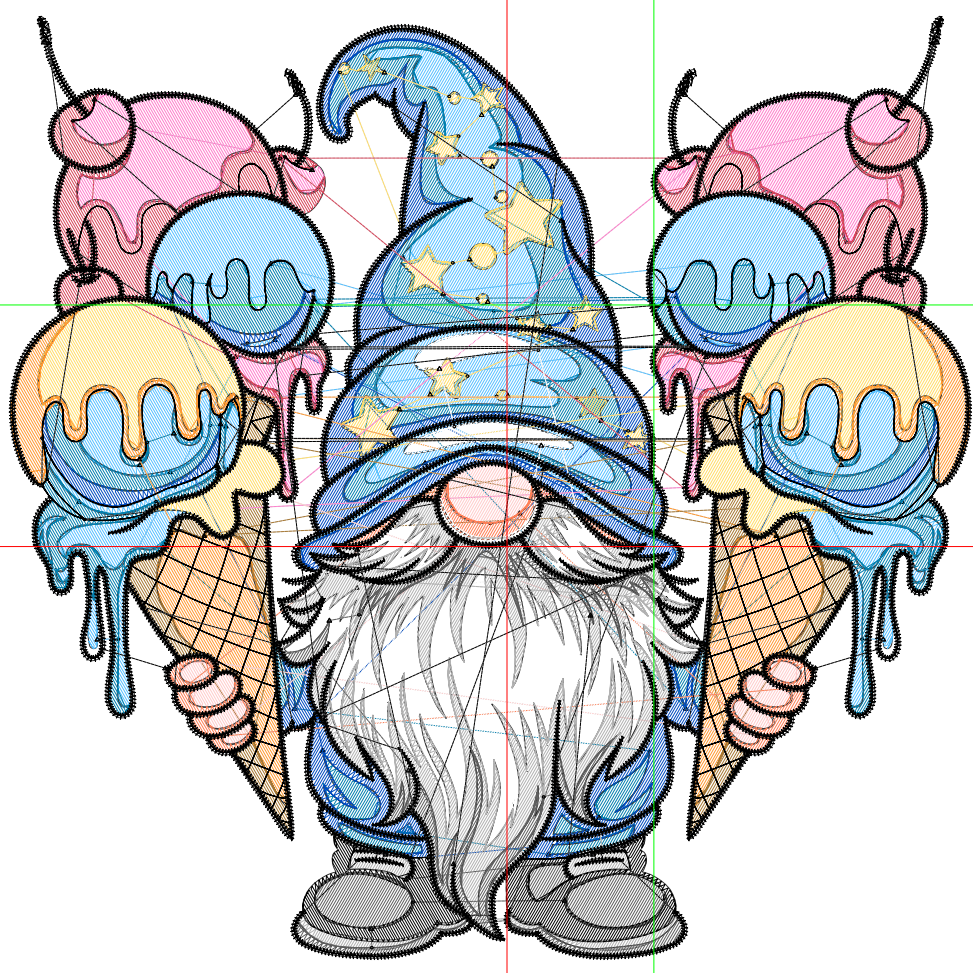
Wilcom EmbroideryStudio - Designing



Design: **5**

Title:

Stitches: 49,661
Height: 4.91 in
Width: 5.01 in
Colors: 14
Colorway: Colorway 1
Zoom: 1:1



Production Worksheet

Wilcom EmbroideryStudio - Designing



Design: **5**

Title:

Stitches: 49,661
 Height: 4.91 in
 Width: 5.01 in
 Colors: 14
 Colorway: Colorway 1
 Zoom: 1:1

Machine format: Tajima
 Color changes: 13
 Stops: 14
 Trims: 194
 Appliqués: 0
 Left: 85.3 mm
 Right: 42.1 mm
 Up: 38.2 mm
 Down: 86.6 mm
 EndX: -0.76 in
 EndY: -1.26 in
 Area: 24.63 in²
 Max stitch: 7.0 mm
 Min stitch: 0.0 mm
 Max jump: 7.0 mm
 Total thread: 609.93ft
 Total bobbin: 165.61ft

Stop Sequence:

#	N#	Color	St.	Code	Name	Chart
1.	5		4,381	5	Aqua	Default
2.	2		4,532	1497		Madeira Classic 40
3.	10		4,060	10	Dark Blue	Default
4.	13		2,176	1124	Buttercup	Madeira Classic 40
5.	12		1,768	12	Orange	Default
6.	14		841	1491		Madeira Classic 40
7.	15		1,401	15	Pink	Default
8.	11		2,072	1154	Lipstick Rose	Madeira Classic 40
9.	16		548	16	Sand	Default
10.	17		745	17	Turquoise	Default
11.	9		2,967	9	White	Default
12.	4		4,010	4	Yellow	Default
13.	7		1,684	7	Green	Default
14.	8		18,474	8	Black	Default

Production Worksheet

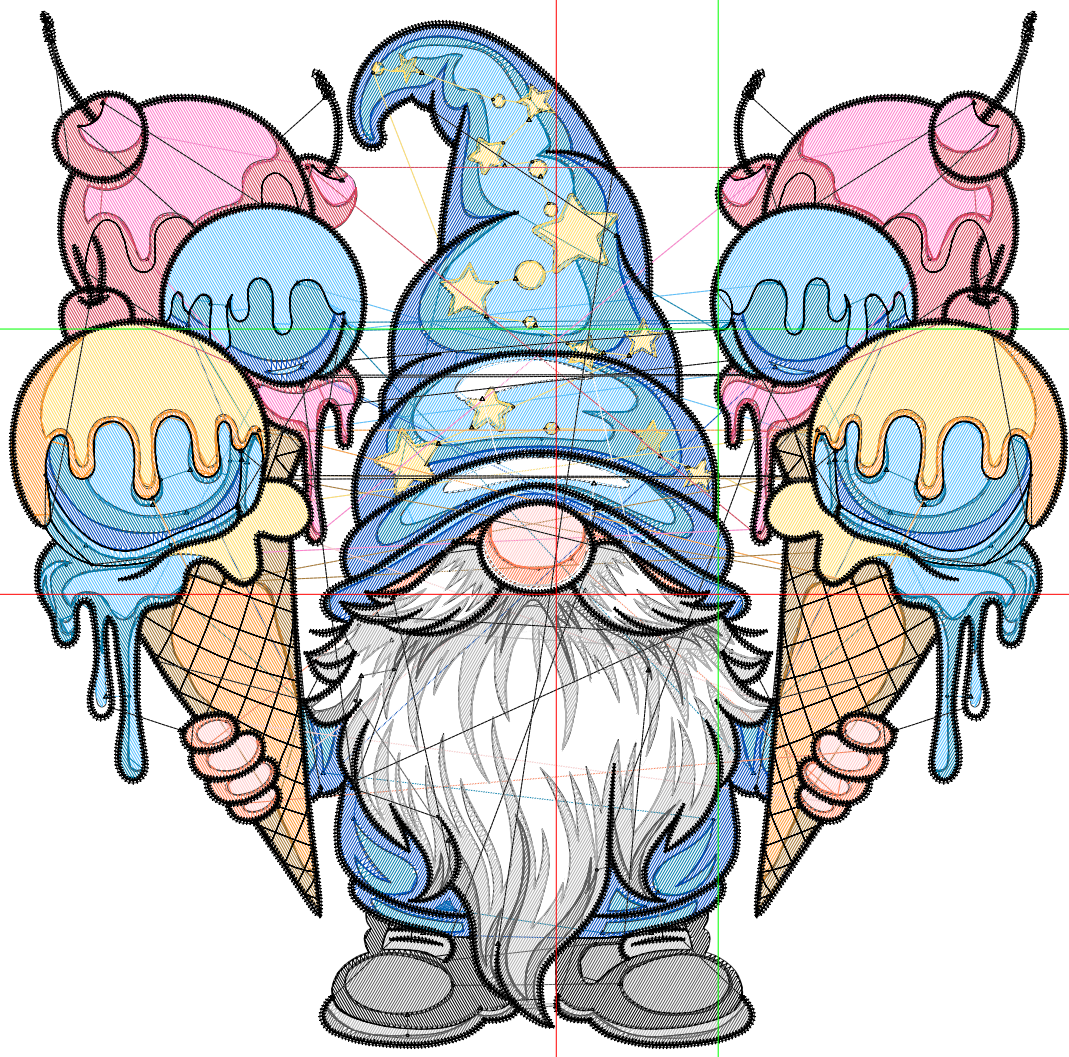
Wilcom EmbroideryStudio - Designing



Design: **5**

Title:

Stitches: 55,276
Height: 5.40 in
Width: 5.51 in
Colors: 14
Colorway: Colorway 1
Zoom: 1:1



Production Worksheet

Wilcom EmbroideryStudio - Designing



Design: **5**

Title:

Stitches: 55,276
 Height: 5.40 in
 Width: 5.51 in
 Colors: 14
 Colorway: Colorway 1
 Zoom: 1:1

Machine format: Tajima
 Color changes: 13
 Stops: 14
 Trims: 199
 Appliqués: 0
 Left: 93.8 mm
 Right: 46.2 mm
 Up: 42.0 mm
 Down: 95.2 mm
 EndX: -0.84 in
 EndY: -1.38 in
 Area 29.78 in²
 Max stitch: 7.0 mm
 Min stitch: 0.0 mm
 Max jump: 7.0 mm
 Total thread: 692.34ft
 Total bobbin: 192.62ft

Stop Sequence:

#	N#	Color	St.	Code	Name	Chart
1.	5		4,958	5	Aqua	Default
2.	2		5,119	1497		Madeira Classic 40
3.	10		4,519	10	Dark Blue	Default
4.	13		2,455	1124	Buttercup	Madeira Classic 40
5.	12		1,969	12	Orange	Default
6.	14		954	1491		Madeira Classic 40
7.	15		1,601	15	Pink	Default
8.	11		2,345	1154	Lipstick Rose	Madeira Classic 40
9.	16		619	16	Sand	Default
10.	17		842	17	Turquoise	Default
11.	9		3,339	9	White	Default
12.	4		4,604	4	Yellow	Default
13.	7		1,900	7	Green	Default
14.	8		20,050	8	Black	Default

Production Worksheet

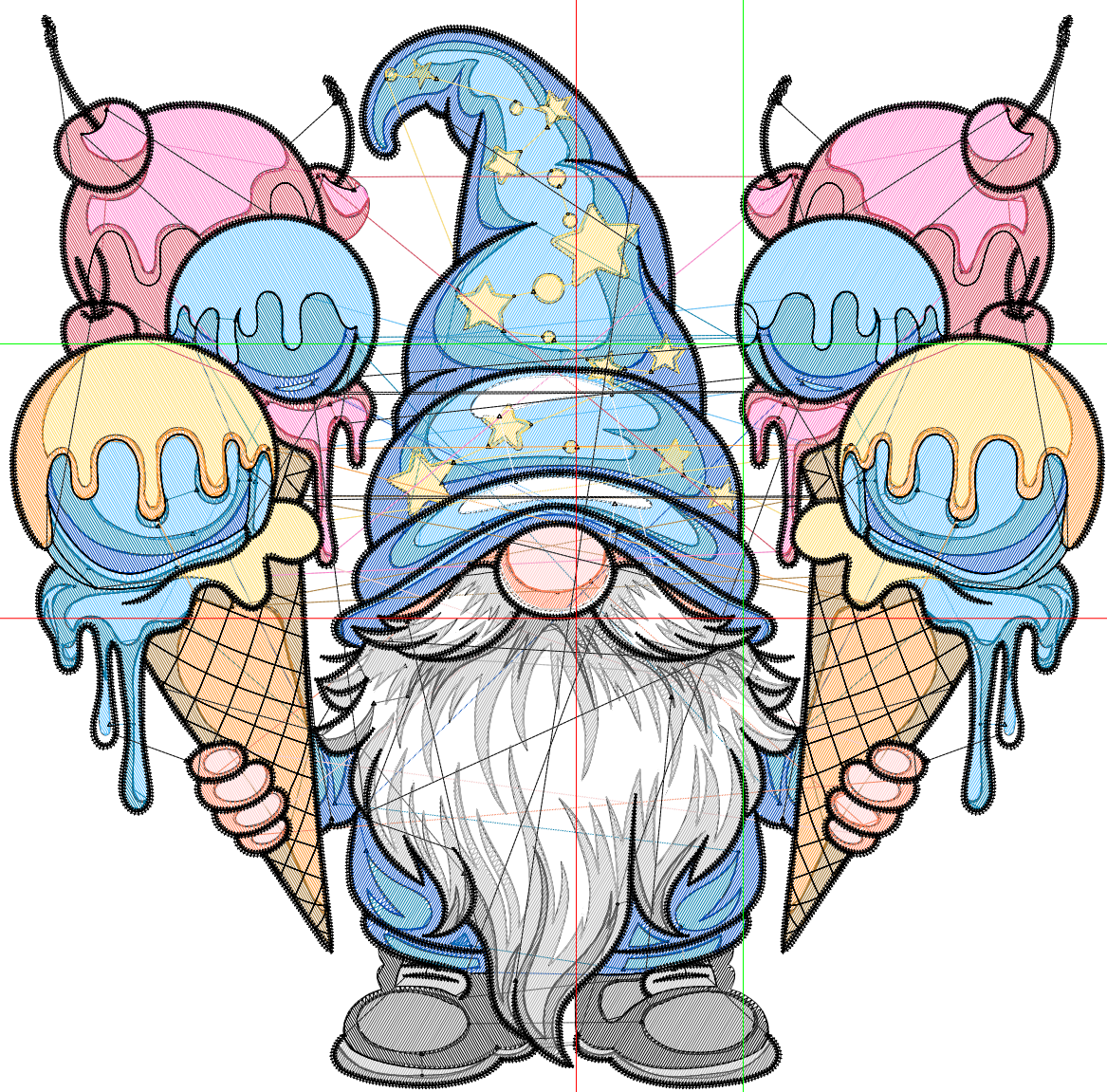
Wilcom EmbroideryStudio - Designing



Design: **6**

Title:

Stitches: 61,272
Height: 5.89 in
Width: 6.01 in
Colors: 14
Colorway: Colorway 1
Zoom: 1:1



Production Worksheet

Wilcom EmbroideryStudio - Designing



Design: **6**

Title:

Stitches: 61,272
 Height: 5.89 in
 Width: 6.01 in
 Colors: 14
 Colorway: Colorway 1
 Zoom: 1:1

Machine format: Tajima
 Color changes: 13
 Stops: 14
 Trims: 205
 Appliqués: 0
 Left: 102.3 mm
 Right: 50.4 mm
 Up: 45.8 mm
 Down: 103.9 mm
 EndX: -0.92 in
 EndY: -1.51 in
 Area 35.43 in²
 Max stitch: 7.0 mm
 Min stitch: 0.0 mm
 Max jump: 7.0 mm
 Total thread: 779.95ft
 Total bobbin: 221.22ft

Stop Sequence:

#	N#	Color	St.	Code	Name	Chart
1.	5		5,603	5	Aqua	Default
2.	2		5,720	1497		Madeira Classic 40
3.	10		5,070	10	Dark Blue	Default
4.	13		2,766	1124	Buttercup	Madeira Classic 40
5.	12		2,134	12	Orange	Default
6.	14		1,074	1491		Madeira Classic 40
7.	15		1,815	15	Pink	Default
8.	11		2,663	1154	Lipstick Rose	Madeira Classic 40
9.	16		695	16	Sand	Default
10.	17		956	17	Turquoise	Default
11.	9		3,768	9	White	Default
12.	4		5,208	4	Yellow	Default
13.	7		2,088	7	Green	Default
14.	8		21,710	8	Black	Default

Production Worksheet

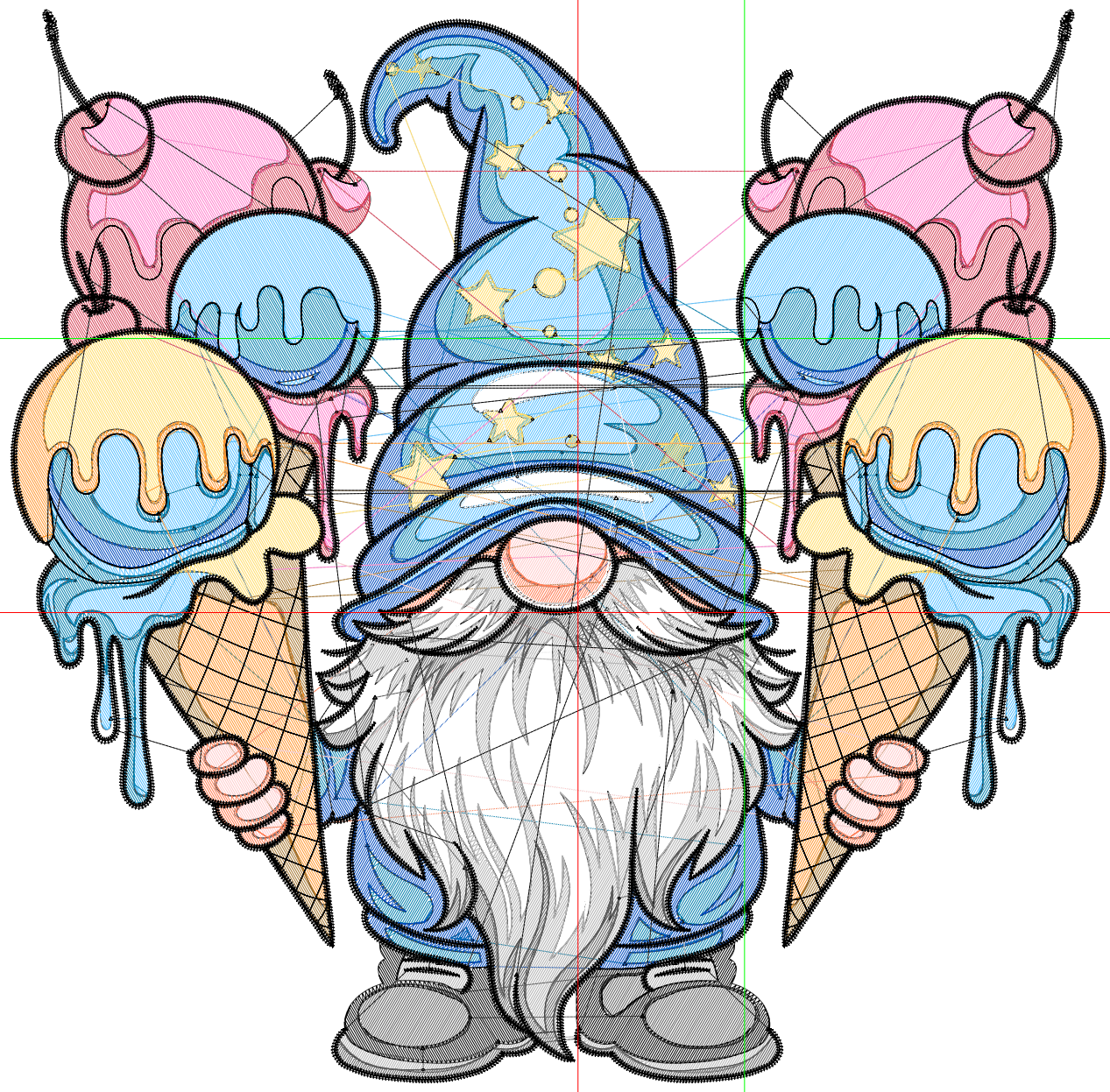
Wilcom EmbroideryStudio - Designing



Design: **6**

Title:

Stitches: 67,311
Height: 6.38 in
Width: 6.51 in
Colors: 14
Colorway: Colorway 1
Zoom: 1:1



Production Worksheet

Wilcom EmbroideryStudio - Designing



Design: **6**

Title:

Stitches: 67,311
 Height: 6.38 in
 Width: 6.51 in
 Colors: 14
 Colorway: Colorway 1
 Zoom: 1:1

Machine format: Tajima
 Color changes: 13
 Stops: 14
 Trims: 205
 Appliqués: 0
 Left: 110.8 mm
 Right: 54.6 mm
 Up: 49.6 mm
 Down: 112.5 mm
 EndX: -0.99 in
 EndY: -1.63 in
 Area 41.57 in²
 Max stitch: 7.0 mm
 Min stitch: 0.0 mm
 Max jump: 7.0 mm
 Total thread: 872.54ft
 Total bobbin: 252.61ft

Stop Sequence:

#	N#	Color	St.	Code	Name	Chart
1.	5		6,259	5	Aqua	Default
2.	2		6,399	1497		Madeira Classic 40
3.	10		5,677	10	Dark Blue	Default
4.	13		3,112	1124	Buttercup	Madeira Classic 40
5.	12		2,451	12	Orange	Default
6.	14		1,184	1491		Madeira Classic 40
7.	15		2,006	15	Pink	Default
8.	11		2,955	1154	Lipstick Rose	Madeira Classic 40
9.	16		769	16	Sand	Default
10.	17		1,066	17	Turquoise	Default
11.	9		4,178	9	White	Default
12.	4		5,599	4	Yellow	Default
13.	7		2,340	7	Green	Default
14.	8		23,314	8	Black	Default

Production Worksheet

Wilcom EmbroideryStudio - Designing



Design: 7

Title:

Stitches: 73,999
Height: 6.87 in
Width: 7.01 in
Colors: 14
Colorway: Colorway 1
Zoom: 1:1



Production Worksheet

Wilcom EmbroideryStudio - Designing



Design: **7**

Title:

Stitches: 73,999
 Height: 6.87 in
 Width: 7.01 in
 Colors: 14
 Colorway: Colorway 1
 Zoom: 1:1

Machine format: Tajima
 Color changes: 13
 Stops: 14
 Trims: 206
 Appliqués: 0
 Left: 119.3 mm
 Right: 58.8 mm
 Up: 53.5 mm
 Down: 121.2 mm
 EndX: -1.07 in
 EndY: -1.76 in
 Area 48.21 in²
 Max stitch: 7.0 mm
 Min stitch: 0.0 mm
 Max jump: 7.0 mm
 Total thread: 974.09ft
 Total bobbin: 286.78ft

Stop Sequence:

#	N#	Color	St.	Code	Name	Chart
1.	5		6,982	5	Aqua	Default
2.	2		7,008	1497		Madeira Classic 40
3.	10		6,272	10	Dark Blue	Default
4.	13		3,462	1124	Buttercup	Madeira Classic 40
5.	12		2,744	12	Orange	Default
6.	14		1,273	1491		Madeira Classic 40
7.	15		2,257	15	Pink	Default
8.	11		3,265	1154	Lipstick Rose	Madeira Classic 40
9.	16		844	16	Sand	Default
10.	17		1,182	17	Turquoise	Default
11.	9		4,663	9	White	Default
12.	4		6,437	4	Yellow	Default
13.	7		2,561	7	Green	Default
14.	8		25,047	8	Black	Default

Production Worksheet

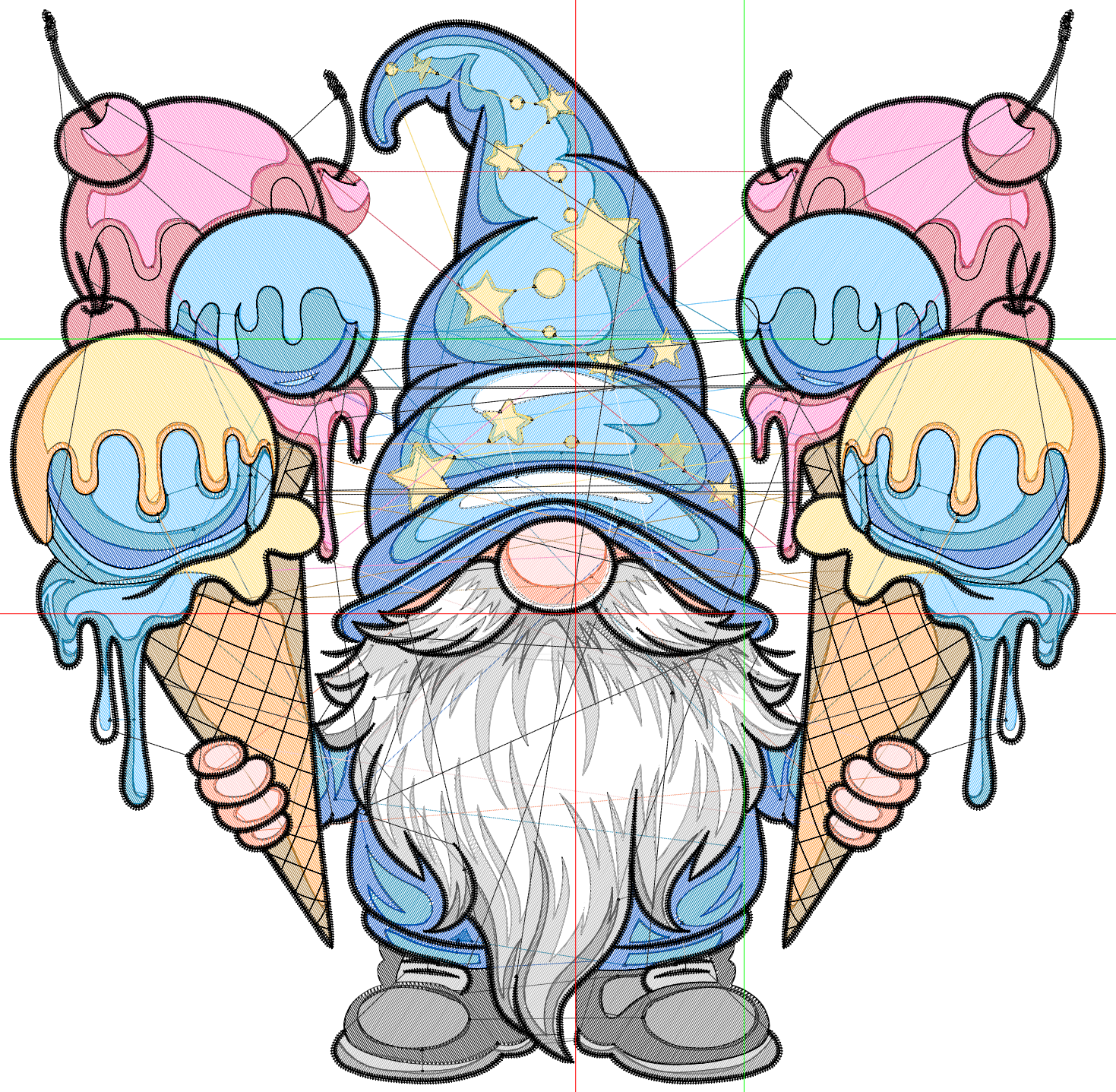
Wilcom EmbroideryStudio - Designing



Design: 7

Title:

Stitches: 80,271
Height: 7.36 in
Width: 7.51 in
Colors: 14
Colorway: Colorway 1
Zoom: 1:1



Production Worksheet

Wilcom EmbroideryStudio - Designing



Design: **7**

Title:

Stitches: 80,271
 Height: 7.36 in
 Width: 7.51 in
 Colors: 14
 Colorway: Colorway 1
 Zoom: 1:1

Machine format: Tajima
 Color changes: 13
 Stops: 14
 Trims: 207
 Appliqués: 0
 Left: 127.8 mm
 Right: 63.0 mm
 Up: 57.3 mm
 Down: 129.8 mm
 EndX: -1.15 in
 EndY: -1.88 in
 Area 55.33 in²
 Max stitch: 7.0 mm
 Min stitch: 0.0 mm
 Max jump: 7.0 mm
 Total thread: 1073.92ft
 Total bobbin: 321.55ft

Stop Sequence:

#	N#	Color	St.	Code	Name	Chart
1.	5		7,652	5	Aqua	Default
2.	2		7,629	1497		Madeira Classic 40
3.	10		6,853	10	Dark Blue	Default
4.	13		3,809	1124	Buttercup	Madeira Classic 40
5.	12		3,002	12	Orange	Default
6.	14		1,430	1491		Madeira Classic 40
7.	15		2,488	15	Pink	Default
8.	11		3,567	1154	Lipstick Rose	Madeira Classic 40
9.	16		937	16	Sand	Default
10.	17		1,294	17	Turquoise	Default
11.	9		5,105	9	White	Default
12.	4		7,007	4	Yellow	Default
13.	7		2,829	7	Green	Default
14.	8		26,667	8	Black	Default