

Production Worksheet

Wilcom EmbroideryStudio - Designing



Design: **3**

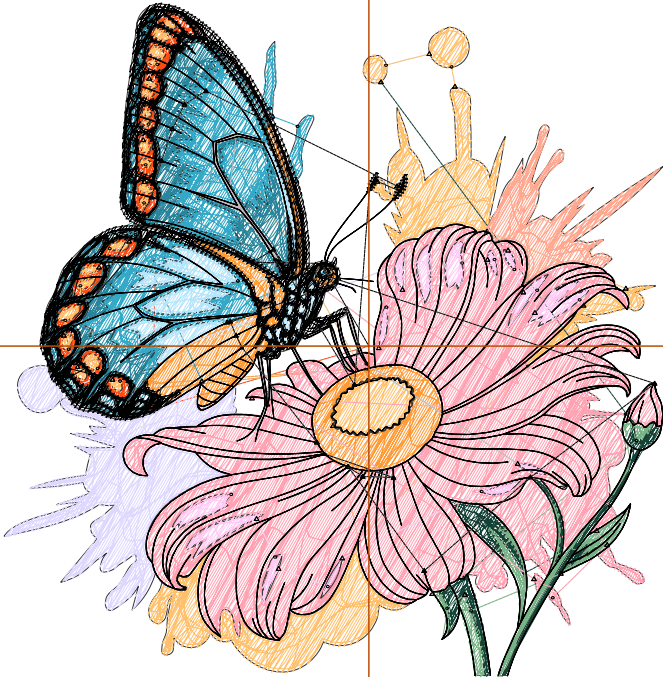
Title:

Stitches: 25,815
 Height: 3.51 in
 Width: 3.43 in
 Colors: 14
 Colorway: Colorway 1
 Zoom: 1:1

Machine format: Tajima
 Color changes: 13
 Stops: 14
 Trims: 81
 Appliqués: 0
 Left: 48.1 mm
 Right: 39.0 mm
 Up: 45.4 mm
 Down: 43.8 mm
 EndX: 0.00 in
 EndY: 0.00 in
 Area: 12.03 in²
 Max stitch: 11.9 mm
 Min stitch: 0.0 mm
 Max jump: 7.0 mm
 Total thread: 350.75ft
 Total bobbin: 104.75ft

Stop Sequence:

#	N#	Color	St.	Code	Name	Chart
1.	2		1,261		R255 G74 B18	
2.	12		1,073	12	Orange	Default
3.	3		2,229		R255 G192 B108	
4.	4		696		R19 G66 B55	
5.	5		657		R118 G179 B133	
6.	7		521		R255 G167 B143	
7.	6		1,134		R222 G216 B255	
8.	9		2,239		R40 G133 B156	
9.	8		2,108		R51 G169 B199	
10.	10		696		R181 G229 B250	
11.	1		4,763		R255 G162 B179	
12.	13		672		R255 G203 B244	
13.	15		469		R189 G182 B186	
14.	14		7,295		R0 G0 B0	



Production Worksheet

Wilcom EmbroideryStudio - Designing



Design: **4**

Title:

Stitches: 29,748
 Height: 4.01 in
 Width: 3.91 in
 Colors: 14
 Colorway: Colorway 1
 Zoom: 1:1

Machine format: Tajima
 Color changes: 13
 Stops: 14
 Trims: 88
 Appliqués: 0
 Left: 54.2 mm
 Right: 45.2 mm
 Up: 51.8 mm
 Down: 50.1 mm
 EndX: 0.00 in
 EndY: 0.00 in
 Area: 15.68 in²
 Max stitch: 11.5 mm
 Min stitch: 0.0 mm
 Max jump: 6.8 mm
 Total thread: 417.11ft
 Total bobbin: 128.78ft

Stop Sequence:

#	N#	Color	St.	Code	Name	Chart
1.	2		1,455		R255 G74 B18	
2.	12		1,233	12	Orange	Default
3.	3		2,577		R255 G192 B108	
4.	4		798		R19 G66 B55	
5.	5		785		R118 G179 B133	
6.	7		585		R255 G167 B143	
7.	6		1,330		R222 G216 B255	
8.	9		2,624		R40 G133 B156	
9.	8		2,441		R51 G169 B199	
10.	10		852		R181 G229 B250	
11.	1		5,656		R255 G162 B179	
12.	13		769		R255 G203 B244	
13.	15		562		R189 G182 B186	
14.	14		8,079		R0 G0 B0	



Production Worksheet

Wilcom EmbroideryStudio - Designing



Design: **4**

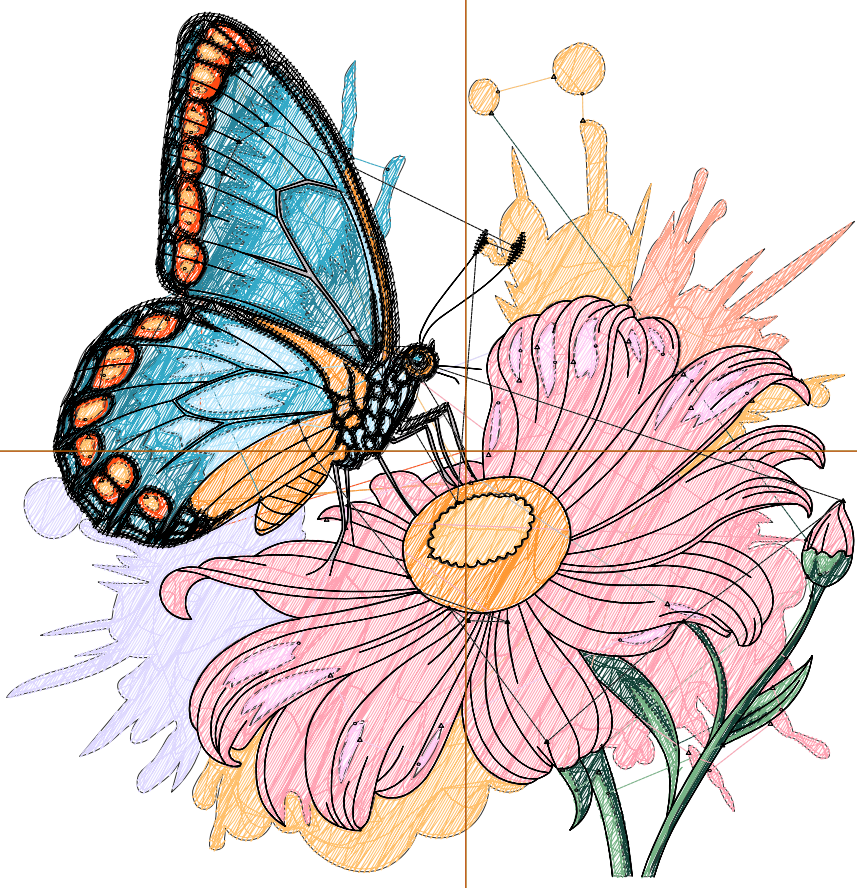
Title:

Stitches: 33,782
 Height: 4.51 in
 Width: 4.41 in
 Colors: 14
 Colorway: Colorway 1
 Zoom: 1:1

Machine format: Tajima
 Color changes: 13
 Stops: 14
 Trims: 90
 Appliqués: 0
 Left: 60.6 mm
 Right: 51.3 mm
 Up: 58.1 mm
 Down: 56.5 mm
 EndX: 0.00 in
 EndY: 0.00 in
 Area: 19.88 in²
 Max stitch: 11.3 mm
 Min stitch: 0.0 mm
 Max jump: 6.9 mm
 Total thread: 486.29ft
 Total bobbin: 154.09ft

Stop Sequence:

#	N#	Color	St.	Code	Name	Chart
1.	2		1,626		R255 G74 B18	
2.	12		1,481	12	Orange	Default
3.	3		2,997		R255 G192 B108	
4.	4		906		R19 G66 B55	
5.	5		867		R118 G179 B133	
6.	7		697		R255 G167 B143	
7.	6		1,523		R222 G216 B255	
8.	9		2,907		R40 G133 B156	
9.	8		2,749		R51 G169 B199	
10.	10		936		R181 G229 B250	
11.	1		6,515		R255 G162 B179	
12.	13		884		R255 G203 B244	
13.	15		681		R189 G182 B186	
14.	14		9,011		R0 G0 B0	



Production Worksheet

Wilcom EmbroideryStudio - Designing



Design: **5**

Title:

Stitches: 37,949
 Height: 5.01 in
 Width: 4.90 in
 Colors: 14
 Colorway: Colorway 1
 Zoom: 1:1

Machine format: Tajima
 Color changes: 13
 Stops: 14
 Trims: 93
 Appliqués: 0
 Left: 66.9 mm
 Right: 57.6 mm
 Up: 64.4 mm
 Down: 62.8 mm
 EndX: 0.00 in
 EndY: 0.00 in
 Area: 24.55 in²
 Max stitch: 10.1 mm
 Min stitch: 0.0 mm
 Max jump: 7.0 mm
 Total thread: 558.56ft
 Total bobbin: 180.72ft

Stop Sequence:

#	N#	Color	St.	Code	Name	Chart
1.	2		1,790		R255 G74 B18	
2.	12		1,682	12	Orange	Default
3.	3		3,315		R255 G192 B108	
4.	4		1,014		R19 G66 B55	
5.	5		989		R118 G179 B133	
6.	7		767		R255 G167 B143	
7.	6		1,753		R222 G216 B255	
8.	9		3,309		R40 G133 B156	
9.	8		3,108		R51 G169 B199	
10.	10		1,070		R181 G229 B250	
11.	1		7,574		R255 G162 B179	
12.	13		996		R255 G203 B244	
13.	15		769		R189 G182 B186	
14.	14		9,811		R0 G0 B0	



Production Worksheet

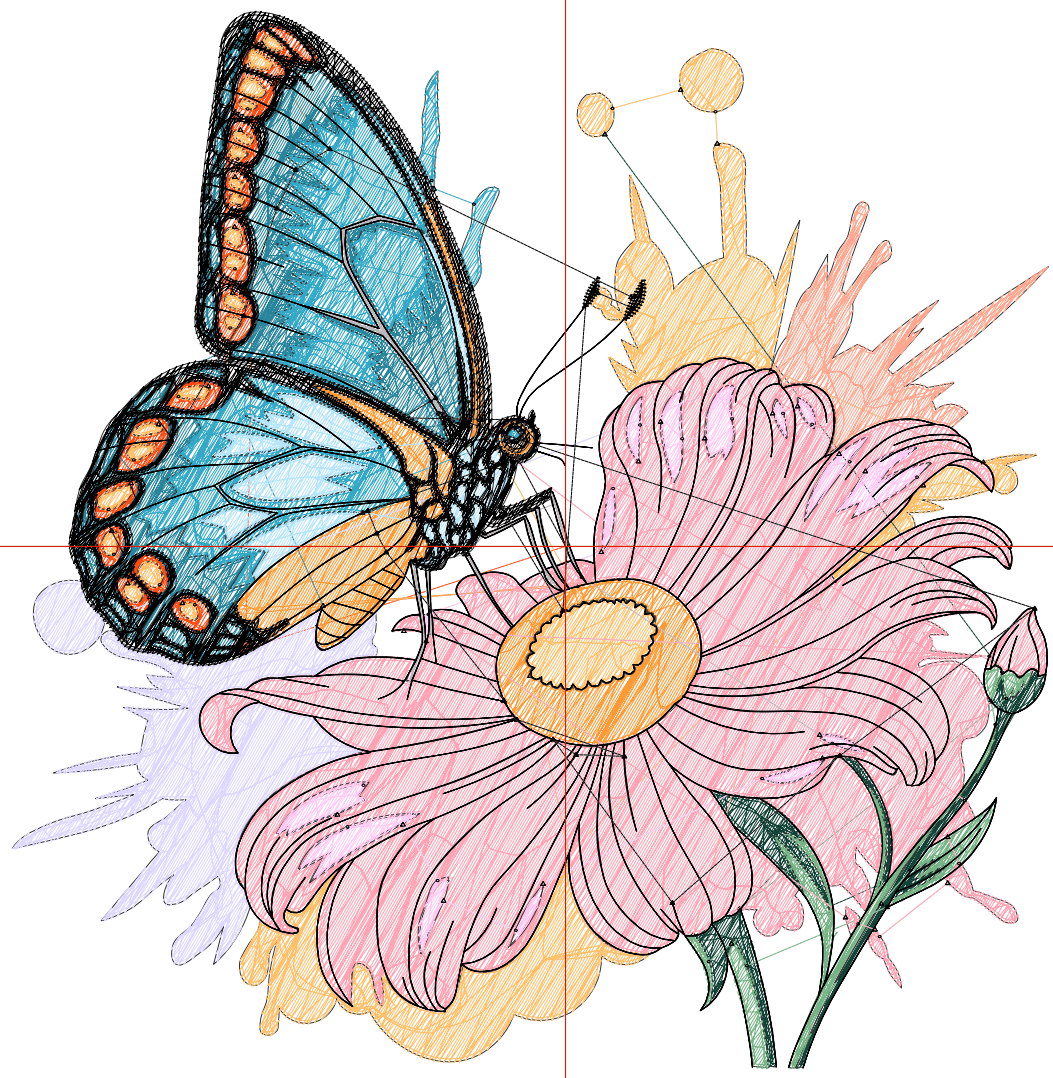
Wilcom EmbroideryStudio - Designing



Design: **5**

Title:

Stitches: 42,015
Height: 5.51 in
Width: 5.39 in
Colors: 14
Colorway: Colorway 1
Zoom: 1:1



Production Worksheet

Wilcom EmbroideryStudio - Designing



Design: **5**

Title:

Stitches: 42,015
 Height: 5.51 in
 Width: 5.39 in
 Colors: 14
 Colorway: Colorway 1
 Zoom: 1:1

Machine format: Tajima
 Color changes: 13
 Stops: 14
 Trims: 96
 Appliqués: 0
 Left: 73.1 mm
 Right: 63.9 mm
 Up: 70.8 mm
 Down: 69.2 mm
 EndX: 0.00 in
 EndY: 0.00 in
 Area 29.72 in²
 Max stitch: 10.2 mm
 Min stitch: 0.0 mm
 Max jump: 6.8 mm
 Total thread: 633.29ft
 Total bobbin: 209.19ft

Stop Sequence:

#	N#	Color	St.	Code	Name	Chart
1.	2		1,706		R255 G74 B18	
2.	12		1,874	12	Orange	Default
3.	3		3,765		R255 G192 B108	
4.	4		1,114		R19 G66 B55	
5.	5		1,069		R118 G179 B133	
6.	7		862		R255 G167 B143	
7.	6		1,961		R222 G216 B255	
8.	9		3,724		R40 G133 B156	
9.	8		3,439		R51 G169 B199	
10.	10		1,194		R181 G229 B250	
11.	1		8,651		R255 G162 B179	
12.	13		1,104		R255 G203 B244	
13.	15		851		R189 G182 B186	
14.	14		10,699		R0 G0 B0	

Production Worksheet

Wilcom EmbroideryStudio - Designing



Design: **6**

Title:

Stitches: 46,355
Height: 6.01 in
Width: 5.87 in
Colors: 14
Colorway: Colorway 1
Zoom: 1:1



Production Worksheet

Wilcom EmbroideryStudio - Designing



Design: **6**

Title:

Stitches: 46,355
 Height: 6.01 in
 Width: 5.87 in
 Colors: 14
 Colorway: Colorway 1
 Zoom: 1:1

Machine format: Tajima
 Color changes: 13
 Stops: 14
 Trims: 95
 Appliqués: 0
 Left: 79.1 mm
 Right: 70.0 mm
 Up: 77.1 mm
 Down: 75.5 mm
 EndX: 0.00 in
 EndY: 0.00 in
 Area 35.28 in²
 Max stitch: 11.8 mm
 Min stitch: 0.0 mm
 Max jump: 6.9 mm
 Total thread: 715.10ft
 Total bobbin: 240.80ft

Stop Sequence:

#	N#	Color	St.	Code	Name	Chart
1.	2		1,824		R255 G74 B18	
2.	12		2,117	12	Orange	Default
3.	3		4,166		R255 G192 B108	
4.	4		1,232		R19 G66 B55	
5.	5		1,155		R118 G179 B133	
6.	7		967		R255 G167 B143	
7.	6		2,161		R222 G216 B255	
8.	9		4,101		R40 G133 B156	
9.	8		3,810		R51 G169 B199	
10.	10		1,323		R181 G229 B250	
11.	1		9,772		R255 G162 B179	
12.	13		1,217		R255 G203 B244	
13.	15		936		R189 G182 B186	
14.	14		11,572		R0 G0 B0	

Production Worksheet

Wilcom EmbroideryStudio - Designing



Design: **6**

Title:

Stitches: 51,212
Height: 6.51 in
Width: 6.36 in
Colors: 14
Colorway: Colorway 1
Zoom: 1:1



Production Worksheet

Wilcom EmbroideryStudio - Designing



Design: **6**

Title:

Stitches: 51,212
 Height: 6.51 in
 Width: 6.36 in
 Colors: 14
 Colorway: Colorway 1
 Zoom: 1:1

Machine format: Tajima
 Color changes: 13
 Stops: 14
 Trims: 97
 Appliqués: 0
 Left: 85.4 mm
 Right: 76.3 mm
 Up: 83.5 mm
 Down: 81.8 mm
 EndX: 0.00 in
 EndY: 0.00 in
 Area 41.43 in²
 Max stitch: 7.9 mm
 Min stitch: 0.0 mm
 Max jump: 7.0 mm
 Total thread: 806.15ft
 Total bobbin: 275.86ft

Stop Sequence:

#	N#	Color	St.	Code	Name	Chart
1.	2		2,256		R255 G74 B18	
2.	12		2,352	12	Orange	Default
3.	3		4,621		R255 G192 B108	
4.	4		1,345		R19 G66 B55	
5.	5		1,268		R118 G179 B133	
6.	7		1,083		R255 G167 B143	
7.	6		2,420		R222 G216 B255	
8.	9		4,486		R40 G133 B156	
9.	8		4,166		R51 G169 B199	
10.	10		1,471		R181 G229 B250	
11.	1		11,000		R255 G162 B179	
12.	13		1,345		R255 G203 B244	
13.	15		1,020		R189 G182 B186	
14.	14		12,377		R0 G0 B0	

Production Worksheet

Wilcom EmbroideryStudio - Designing



Design: **7**

Title:

Stitches: 55,901
Height: 7.01 in
Width: 6.85 in
Colors: 14
Colorway: Colorway 1
Zoom: 1:1



Production Worksheet

Wilcom EmbroideryStudio - Designing



Design: **7**

Title:

Stitches: 55,901
 Height: 7.01 in
 Width: 6.85 in
 Colors: 14
 Colorway: Colorway 1
 Zoom: 1:1

Machine format: Tajima
 Color changes: 13
 Stops: 14
 Trims: 101
 Appliqués: 0
 Left: 91.6 mm
 Right: 82.5 mm
 Up: 89.9 mm
 Down: 88.2 mm
 EndX: 0.00 in
 EndY: 0.00 in
 Area 48.05 in²
 Max stitch: 7.7 mm
 Min stitch: 0.0 mm
 Max jump: 7.0 mm
 Total thread: 895.47ft
 Total bobbin: 310.56ft

Stop Sequence:

#	N#	Color	St.	Code	Name	Chart
1.	2		2,449		R255 G74 B18	
2.	12		2,601	12	Orange	Default
3.	3		5,039		R255 G192 B108	
4.	4		1,479		R19 G66 B55	
5.	5		1,378		R118 G179 B133	
6.	7		1,216		R255 G167 B143	
7.	6		2,677		R222 G216 B255	
8.	9		4,896		R40 G133 B156	
9.	8		4,517		R51 G169 B199	
10.	10		1,620		R181 G229 B250	
11.	1		12,247		R255 G162 B179	
12.	13		1,430		R255 G203 B244	
13.	15		1,109		R189 G182 B186	
14.	14		13,241		R0 G0 B0	

Production Worksheet

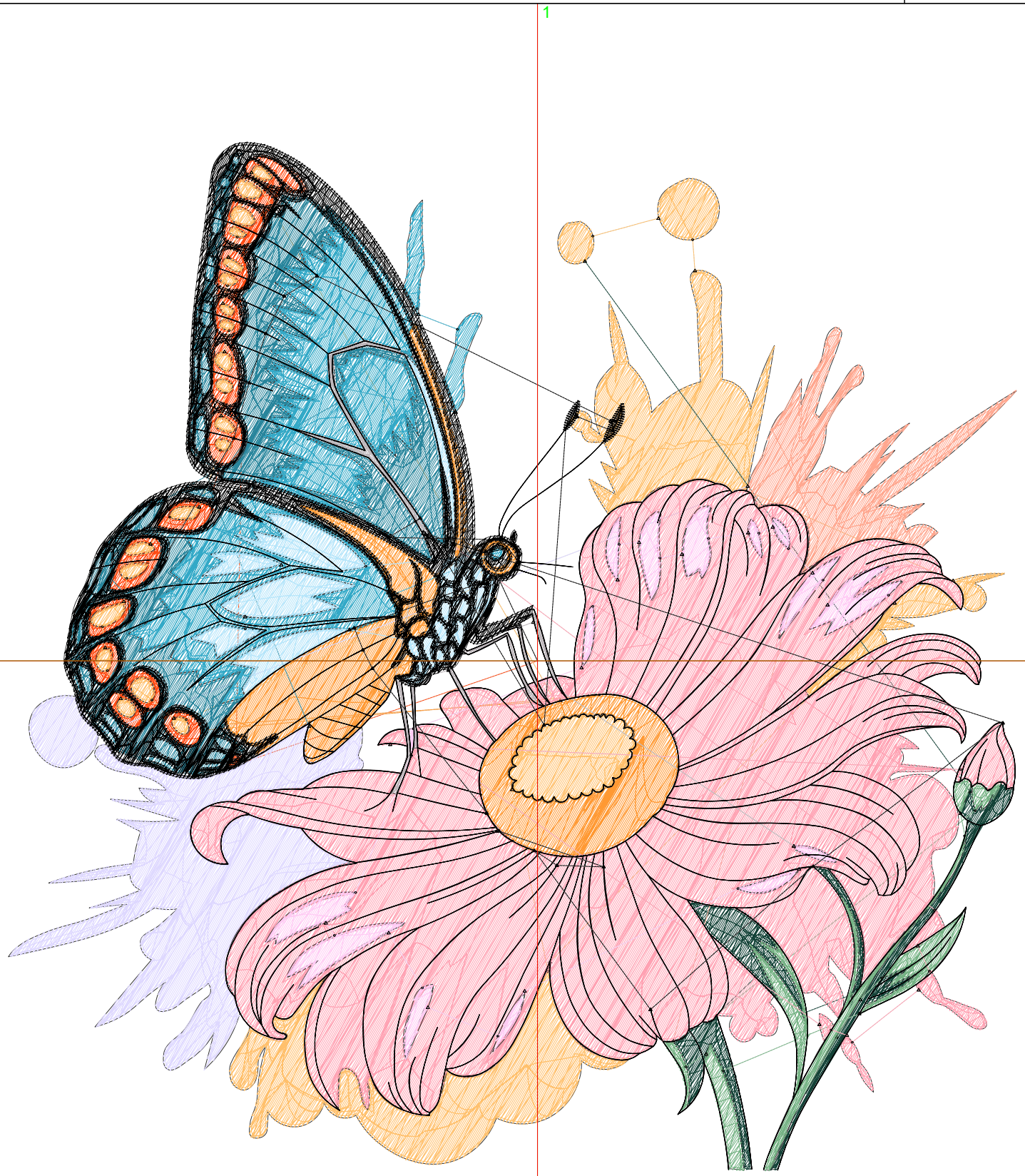
Wilcom EmbroideryStudio - Designing



Design: **7**

Title:

Stitches: 60,416
Height: 7.51 in
Width: 7.35 in
Colors: 14
Colorway: Colorway 1
Zoom: 1:1



Production Worksheet

Wilcom EmbroideryStudio - Designing



Design: **7**

Title:

Stitches: 60,416
 Height: 7.51 in
 Width: 7.35 in
 Colors: 14
 Colorway: Colorway 1
 Zoom: 1:1

Machine format: Tajima
 Color changes: 13
 Stops: 14
 Trims: 102
 Appliqués: 0
 Left: 97.9 mm
 Right: 88.8 mm
 Up: 96.2 mm
 Down: 94.6 mm
 EndX: 0.00 in
 EndY: 0.00 in
 Area 55.19 in²
 Max stitch: 9.3 mm
 Min stitch: 0.0 mm
 Max jump: 7.0 mm
 Total thread: 985.20ft
 Total bobbin: 346.18ft

Stop Sequence:

#	N#	Color	St.	Code	Name	Chart
1.	2		2,289		R255 G74 B18	
2.	12		2,854	12	Orange	Default
3.	3		5,489		R255 G192 B108	
4.	4		1,600		R19 G66 B55	
5.	5		1,483		R118 G179 B133	
6.	7		1,338		R255 G167 B143	
7.	6		2,940		R222 G216 B255	
8.	9		5,263		R40 G133 B156	
9.	8		4,938		R51 G169 B199	
10.	10		1,755		R181 G229 B250	
11.	1		13,604		R255 G162 B179	
12.	13		1,545		R255 G203 B244	
13.	15		1,184		R189 G182 B186	
14.	14		14,132		R0 G0 B0	