

Approval Sheet

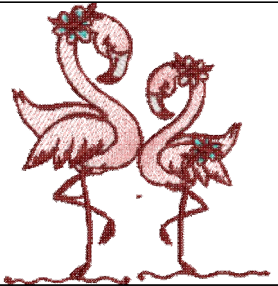
Wilcom EmbroideryStudio - Designing

5 INCH

Design: **5 inch**

Title:

Height: 5.02 in
Width: 4.68 in
Colors: 4
Colorway: Colorway 1
Zoom: 1:1



Product type:
Product:
Total qty:
Product colors:
Position:

Terms and Conditions:

Approved By:

Date:

Production Worksheet

Wilcom EmbroideryStudio - Designing

5 INCH


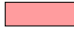

Design: **5 inch**

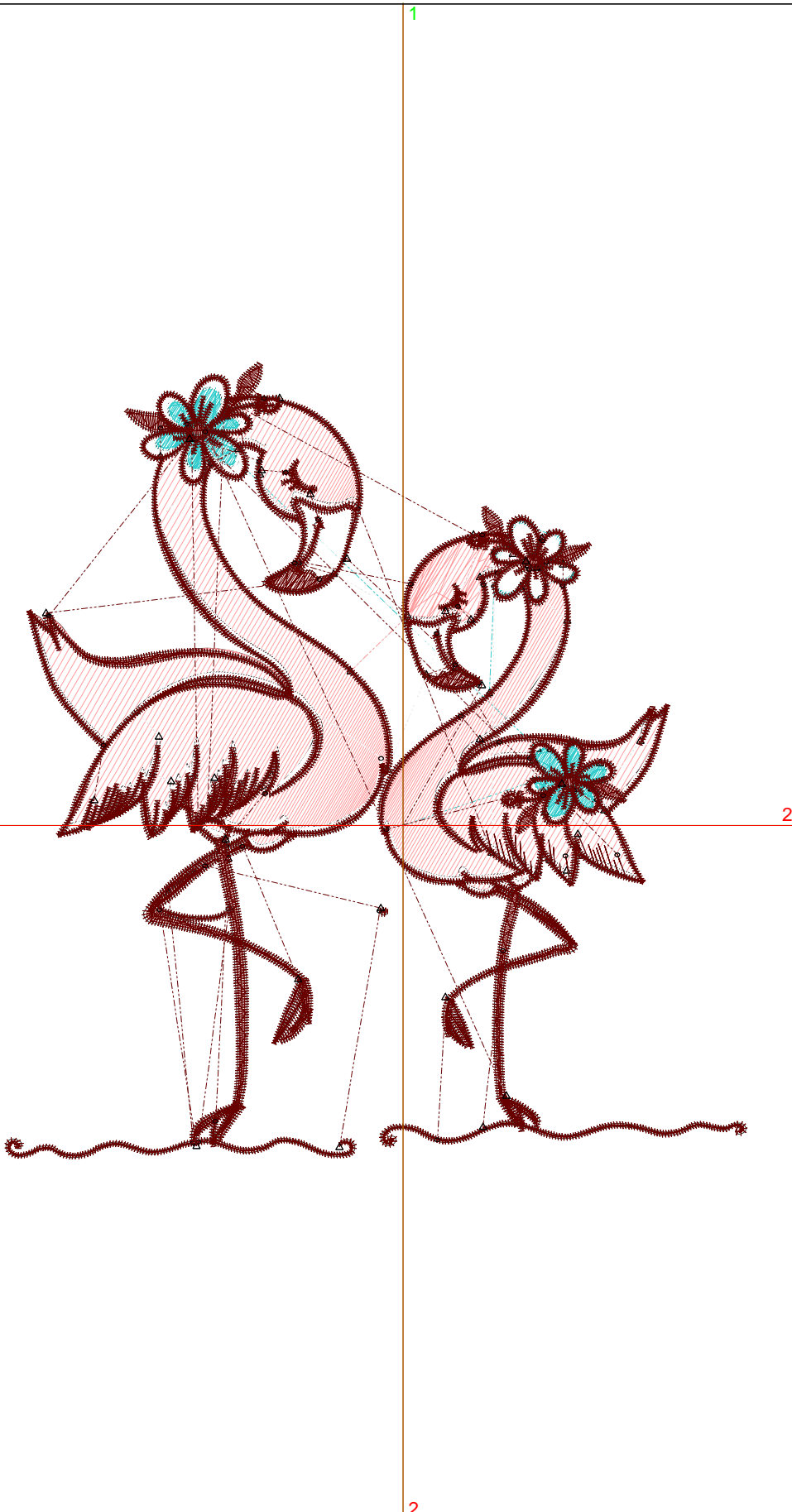
Title:

Stitches: 24,777
 Height: 5.02 in
 Width: 4.68 in
 Colors: 4
 Colorway: Colorway 1
 Zoom: 1:1

Machine format: Tajima
 Color changes: 4
 Stops: 5
 Trims: 82
 Appliqués: 0
 Left: 63.7 mm
 Right: 55.1 mm
 Up: 74.0 mm
 Down: 53.4 mm
 EndX: 0.00 in
 EndY: 0.00 in
 Area: 23.46 in²
 Max stitch: 11.4 mm
 Min stitch: 0.0 mm
 Max jump: 6.9 mm
 Total thread: 318.66ft
 Total bobbin: 91.52ft

Stop Sequence:

#	N#	Color	St.	Code	Name	Chart
1.	5		901	R51	G204 B204	
2.	12		2,276	R255	G156 B158	
3.	5		289	R51	G204 B204	
4.	9		5,590	R255	G255 B255	
5.	11		15,719	R105	G0 B0	



Color Film

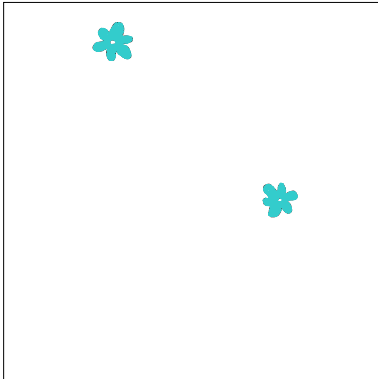
Wilcom EmbroideryStudio - Designing

5 INCH

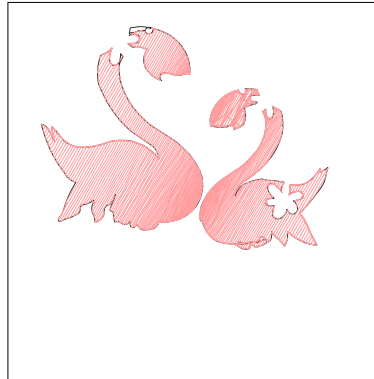
Design: **5 inch**

Title:

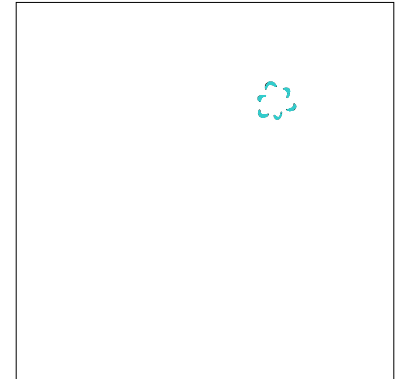
Stitches: 24,777
Height: 5.02 in
Width: 4.68 in
Colors: 4
Colorway: Colorway 1
Zoom: 0.37



Stop #: 1
Element:
Code:
Name: R51 G204 B204
Chart:
Stitches: 901
Thread used: 12.76ft



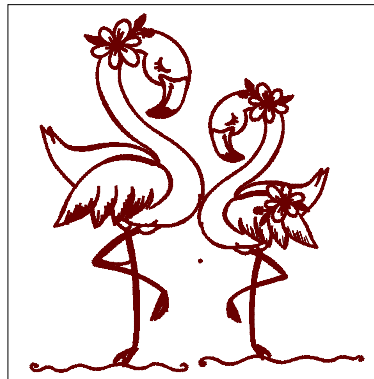
Stop #: 2
Element:
Code:
Name: R255 G156 B158
Chart:
Stitches: 2,276
Thread used: 40.32ft



Stop #: 3
Element:
Code:
Name: R51 G204 B204
Chart:
Stitches: 289
Thread used: 2.87ft



Stop #: 4
Element:
Code:
Name: R255 G255 B255
Chart:
Stitches: 5,590
Thread used: 67.81ft



Stop #: 5
Element:
Code:
Name: R105 G0 B0
Chart:
Stitches: 15,719
Thread used: 193.26ft

Production Summary

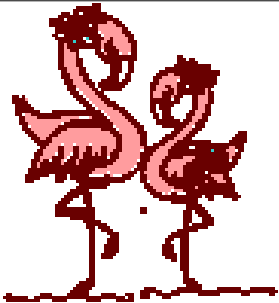
Wilcom EmbroideryStudio - Designing

5 INCH

Design: **5 inch**

Title:

Stitches: 24,777
 Height: 5.02 in
 Width: 4.68 in
 Colors: 4



Machine format: Tajima
 Color changes: 4
 Stops: 5
 Trims: 82
 Hoop: <None>
 Max stitch: 11.4 mm
 Min stitch: 0.0 mm
 Max jump: 6.9 mm

Left: 63.7 mm
 Right: 55.1 mm
 Up: 74.0 mm
 Down: 53.4 mm
 EndX: 0.00 in
 EndY: 0.00 in
 Area: 23.46 in²
 Total thread: 318.66ft
 Total bobbin: 91.52ft

Colorway		Colorway 1
Background		
Product		Blanks\Blank
Stop	Color	Stitches
1	5	901 R51 G204 B204
2	12	2,276 R255 G156 B158
3	5	289 R51 G204 B204
4	9	5,590 R255 G255 B255
5	11	15,719 R105 G0 B0

Approval Sheet

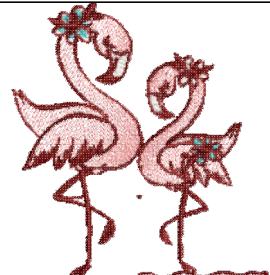
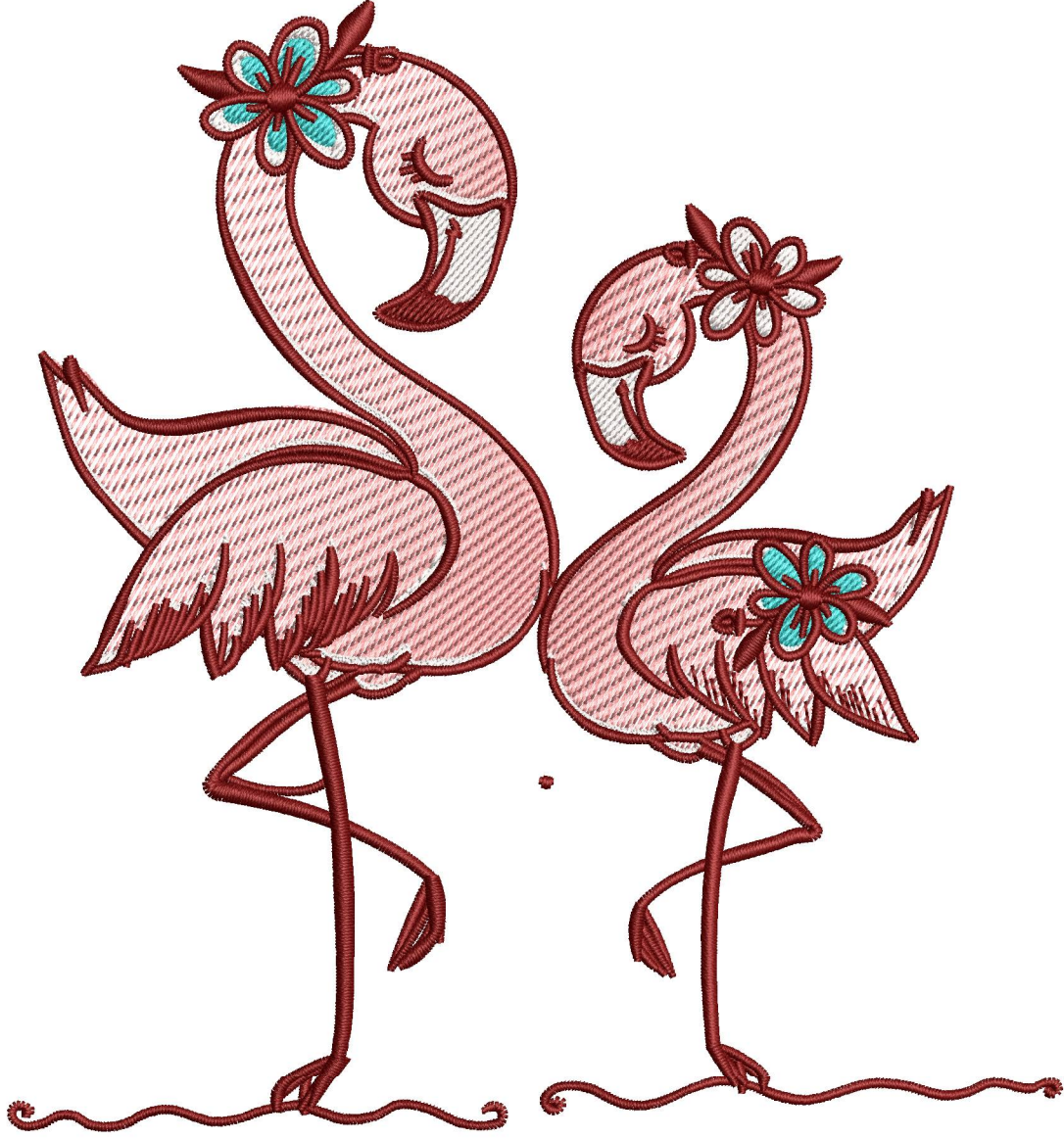
Wilcom EmbroideryStudio - Designing

6 INCH

Design: **6 inch**

Title:

Height: 6.02 in
Width: 5.61 in
Colors: 4
Colorway: Colorway 1
Zoom: 1:1



Product type:
Product:
Total qty:
Product colors:
Position:

Terms and Conditions:

Approved By:

Date:

Production Worksheet

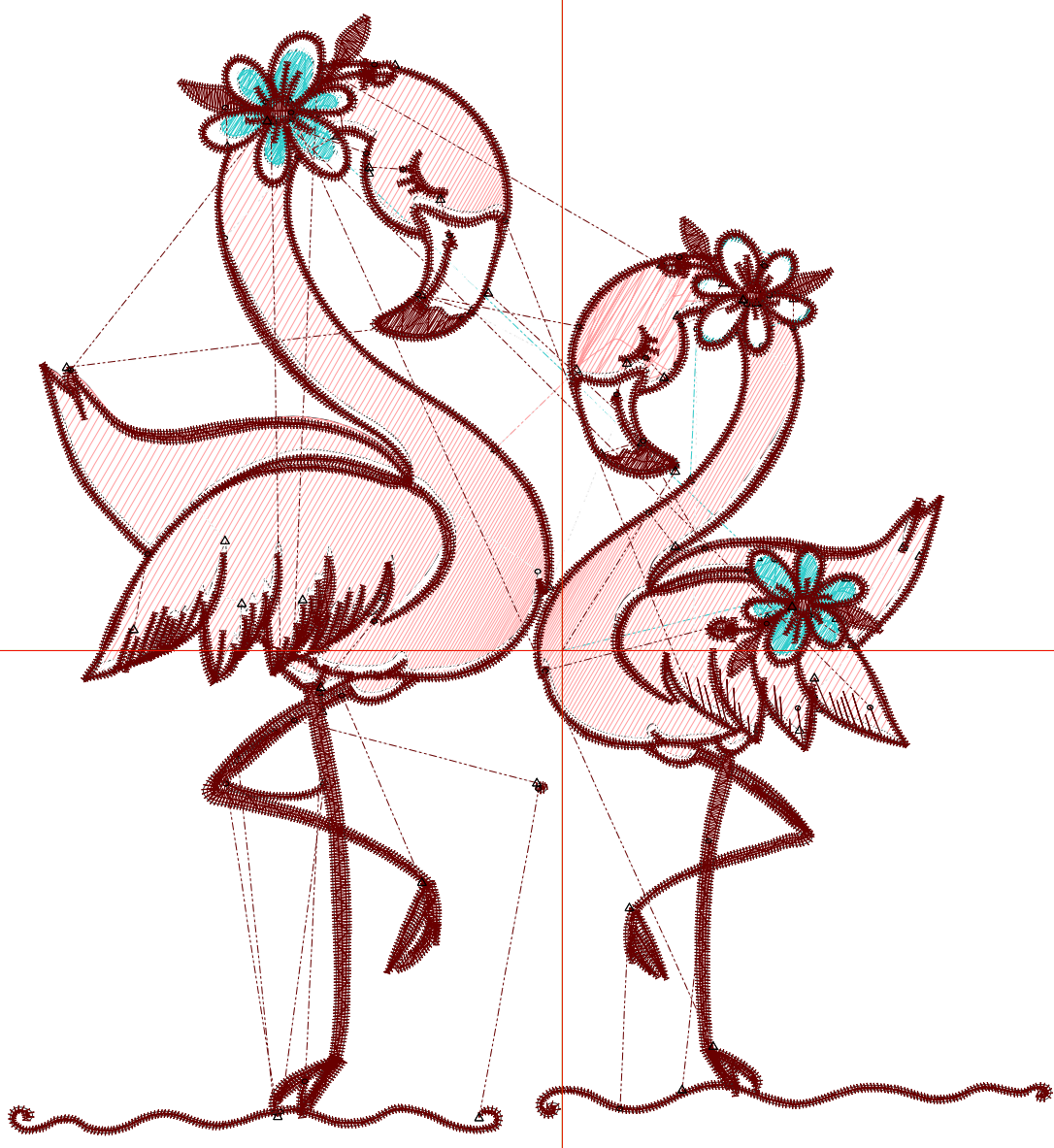
Wilcom EmbroideryStudio - Designing

6 INCH

Design: 6 inch

Title:

Stitches: 29,707
Height: 6.02 in
Width: 5.61 in
Colors: 4
Colorway: Colorway 1
Zoom: 1:1



Production Worksheet

Wilcom EmbroideryStudio - Designing

6 INCH






Design: **6 inch**

Title:

Stitches: 29,707
 Height: 6.02 in
 Width: 5.61 in
 Colors: 4
 Colorway: Colorway 1
 Zoom: 1:1

Machine format: Tajima
 Color changes: 4
 Stops: 5
 Trims: 85
 Appliqués: 0
 Left: 75.5 mm
 Right: 66.9 mm
 Up: 86.7 mm
 Down: 66.1 mm
 EndX: 0.00 in
 EndY: 0.00 in
 Area 33.74 in²
 Max stitch: 11.9 mm
 Min stitch: 0.0 mm
 Max jump: 6.9 mm
 Total thread: 398.42ft
 Total bobbin: 119.61ft

Stop Sequence:

#	N#	Color	St.	Code	Name	Chart
1.	5		1,105		R51 G204 B204	
2.	12		2,967		R255 G156 B158	
3.	5		339		R51 G204 B204	
4.	9		6,742		R255 G255 B255	
5.	11		18,552		R105 G0 B0	

Color Film

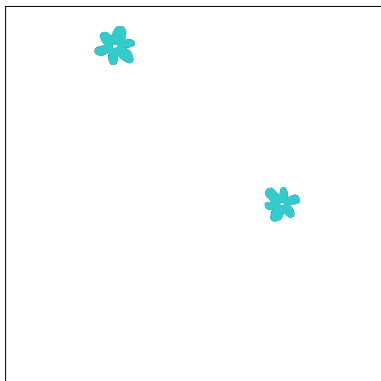
Wilcom EmbroideryStudio - Designing

6 INCH

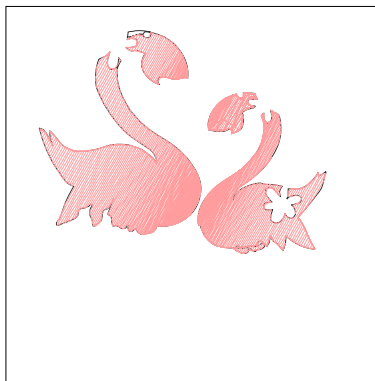
Design: 6 inch

Title:

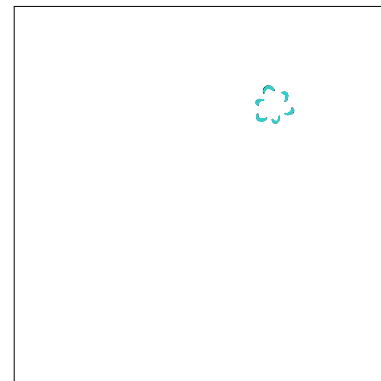
Stitches: 29,707
Height: 6.02 in
Width: 5.61 in
Colors: 4
Colorway: Colorway 1
Zoom: 0.31



Stop #: 1
Element:
Code:
Name: R51 G204 B204
Chart:
Stitches: 1,105
Thread used: 16.55ft



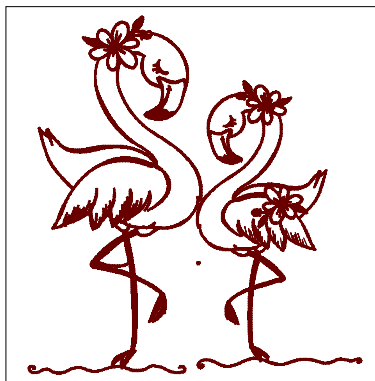
Stop #: 2
Element:
Code:
Name: R255 G156 B158
Chart:
Stitches: 2,967
Thread used: 54.80ft



Stop #: 3
Element:
Code:
Name: R51 G204 B204
Chart:
Stitches: 339
Thread used: 3.49ft



Stop #: 4
Element:
Code:
Name: R255 G255 B255
Chart:
Stitches: 6,742
Thread used: 84.93ft



Stop #: 5
Element:
Code:
Name: R105 G0 B0
Chart:
Stitches: 18,552
Thread used: 237.00ft

Production Summary

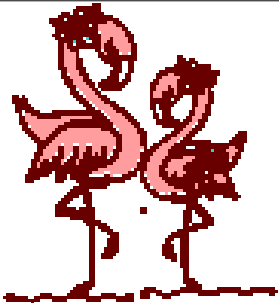
Wilcom EmbroideryStudio - Designing

6 INCH

Design: **6 inch**

Title:

Stitches: 29,707
 Height: 6.02 in
 Width: 5.61 in
 Colors: 4



Machine format: Tajima
 Color changes: 4
 Stops: 5
 Trims: 85
 Hoop: <None>
 Max stitch: 11.9 mm
 Min stitch: 0.0 mm
 Max jump: 6.9 mm

Left: 75.5 mm
 Right: 66.9 mm
 Up: 86.7 mm
 Down: 66.1 mm
 EndX: 0.00 in
 EndY: 0.00 in
 Area: 33.74 in²
 Total thread: 398.42ft
 Total bobbin: 119.61ft

Colorway			Colorway 1
Background			
Product			Blanks\Blank
Stop	Color	Stitches	
1	5	1,105	R51 G204 B204
2	12	2,967	R255 G156 B158
3	5	339	R51 G204 B204
4	9	6,742	R255 G255 B255
5	11	18,552	R105 G0 B0

Approval Sheet

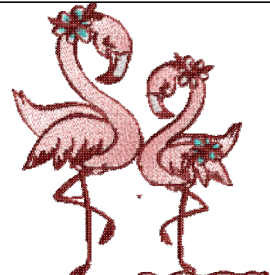
Wilcom EmbroideryStudio - Designing

7 INCH

Design: **7 inch**

Title:

Height: 7.02 in
Width: 6.54 in
Colors: 4
Colorway: Colorway 1
Zoom: 1:1



Product type:
Product:
Total qty:
Product colors:
Position:

Terms and Conditions:

Approved By:

Date:

Production Worksheet

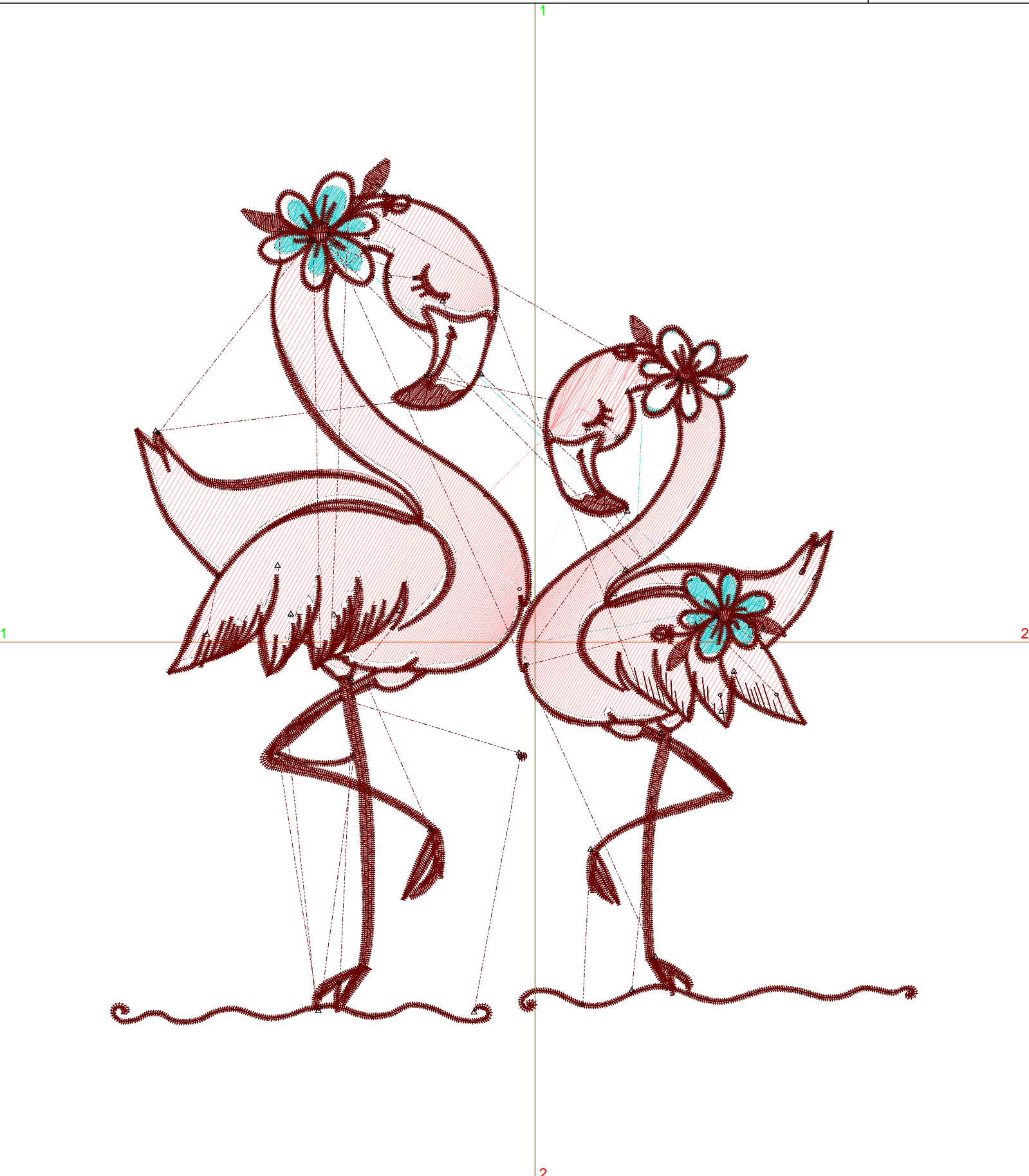
Wilcom EmbroideryStudio - Designing

7 INCH

Design: **7 inch**

Title:

Stitches: 35,083
Height: 7.02 in
Width: 6.54 in
Colors: 4
Colorway: Colorway 1
Zoom: 1:1



Production Worksheet

Wilcom EmbroideryStudio - Designing

7 INCH


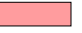



Design: **7 inch**

Title:

Stitches: 35,083
 Height: 7.02 in
 Width: 6.54 in
 Colors: 4
 Colorway: Colorway 1
 Zoom: 1:1

Machine format: Tajima
 Color changes: 4
 Stops: 5
 Trims: 95
 Appliqués: 0
 Left: 87.3 mm
 Right: 78.7 mm
 Up: 99.4 mm
 Down: 78.8 mm
 EndX: 0.00 in
 EndY: 0.00 in
 Area 45.88 in²
 Max stitch: 8.5 mm
 Min stitch: 0.0 mm
 Max jump: 6.9 mm
 Total thread: 488.30ft
 Total bobbin: 151.97ft

Stop Sequence:

#	N#	Color	St.	Code	Name	Chart
1.	5		1,355		R51 G204 B204	
2.	12		3,804		R255 G156 B158	
3.	5		413		R51 G204 B204	
4.	9		8,016		R255 G255 B255	
5.	11		21,493		R105 G0 B0	

Color Film

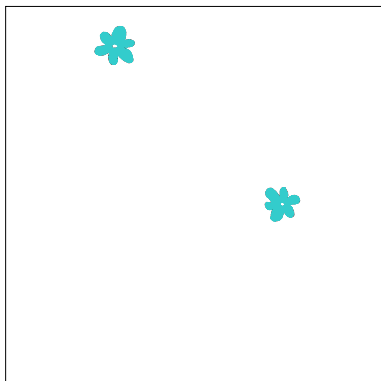
Wilcom EmbroideryStudio - Designing

7 INCH

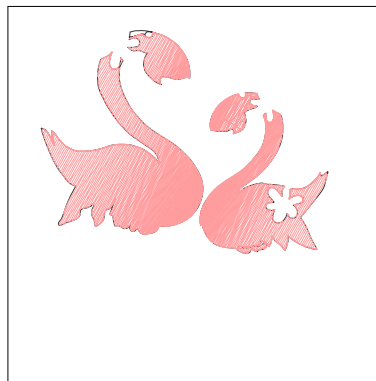
Design: **7 inch**

Title:

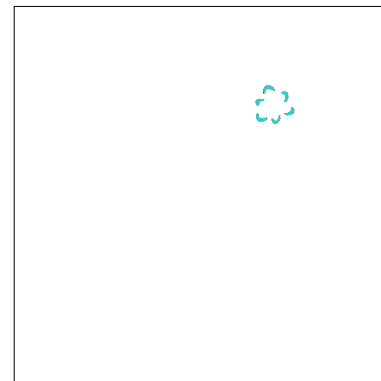
Stitches: 35,083
Height: 7.02 in
Width: 6.54 in
Colors: 4
Colorway: Colorway 1
Zoom: 0.27



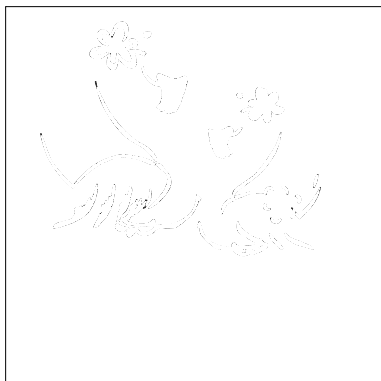
Stop #: 1
Element:
Code:
Name: R51 G204 B204
Chart:
Stitches: 1,355
Thread used: 21.09ft



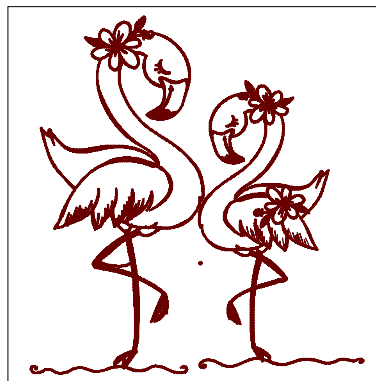
Stop #: 2
Element:
Code:
Name: R255 G156 B158
Chart:
Stitches: 3,804
Thread used: 72.21ft



Stop #: 3
Element:
Code:
Name: R51 G204 B204
Chart:
Stitches: 413
Thread used: 4.28ft



Stop #: 4
Element:
Code:
Name: R255 G255 B255
Chart:
Stitches: 8,016
Thread used: 105.05ft



Stop #: 5
Element:
Code:
Name: R105 G0 B0
Chart:
Stitches: 21,493
Thread used: 284.02ft

Production Summary

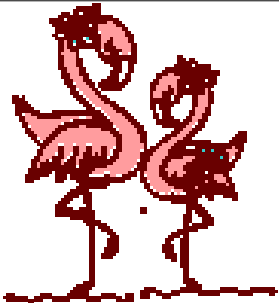
Wilcom EmbroideryStudio - Designing

7 INCH

Design: **7 inch**

Title:

Stitches: 35,083
 Height: 7.02 in
 Width: 6.54 in
 Colors: 4



Machine format: Tajima
 Color changes: 4
 Stops: 5
 Trims: 95
 Hoop: <None>
 Max stitch: 8.5 mm
 Min stitch: 0.0 mm
 Max jump: 6.9 mm

Left: 87.3 mm
 Right: 78.7 mm
 Up: 99.4 mm
 Down: 78.8 mm
 EndX: 0.00 in
 EndY: 0.00 in
 Area: 45.88 in²
 Total thread: 488.30ft
 Total bobbin: 151.97ft

Colorway			Colorway 1
Background			
Product			Blanks\Blank
Stop	Color	Stitches	
1	5	1,355	R51 G204 B204
2	12	3,804	R255 G156 B158
3	5	413	R51 G204 B204
4	9	8,016	R255 G255 B255
5	11	21,493	R105 G0 B0

Approval Sheet

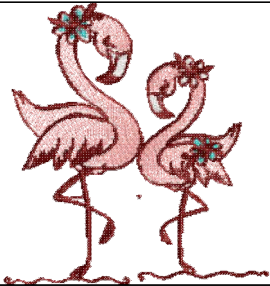
Wilcom EmbroideryStudio - Designing

8 INCH

Design: **8 inch**

Title:

Height: 8.02 in
Width: 7.47 in
Colors: 4
Colorway: Colorway 1
Zoom: 0.99



Product type:
Product:
Total qty:
Product colors:
Position:

Terms and Conditions:

Approved By:

Date:

Production Worksheet

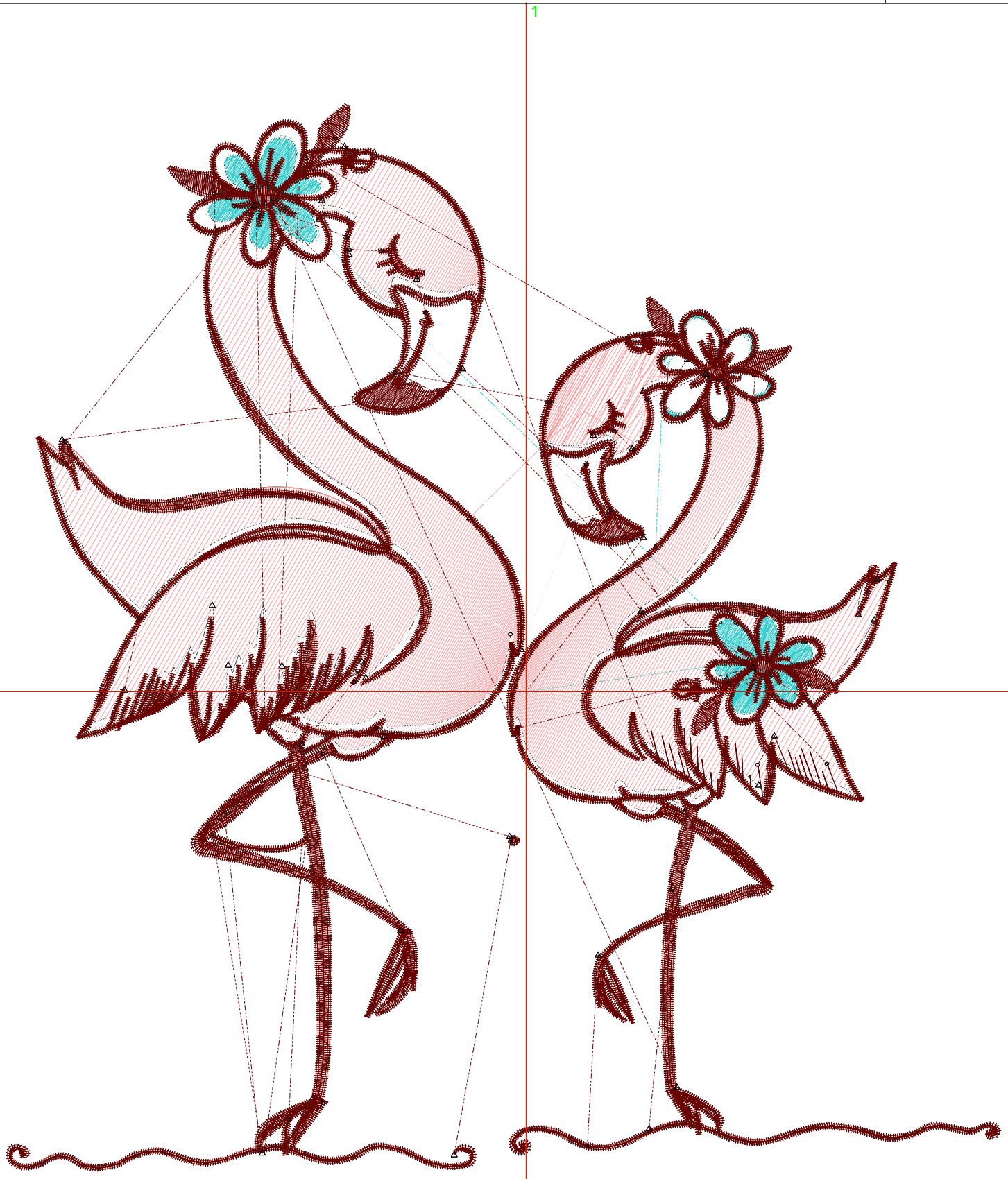
Wilcom EmbroideryStudio - Designing

8 INCH

Design: 8 inch

Title:

Stitches: 40,535
Height: 8.02 in
Width: 7.47 in
Colors: 4
Colorway: Colorway 1
Zoom: 1:1



Production Worksheet

Wilcom EmbroideryStudio - Designing

8 INCH


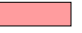



Design: **8 inch**

Title:

Stitches: 40,535
 Height: 8.02 in
 Width: 7.47 in
 Colors: 4
 Colorway: Colorway 1
 Zoom: 1:1

Machine format: Tajima
 Color changes: 4
 Stops: 5
 Trims: 101
 Appliqués: 0
 Left: 99.2 mm
 Right: 90.6 mm
 Up: 112.1 mm
 Down: 91.5 mm
 EndX: 0.00 in
 EndY: 0.00 in
 Area 59.89 in²
 Max stitch: 9.7 mm
 Min stitch: 0.0 mm
 Max jump: 7.0 mm
 Total thread: 584.39ft
 Total bobbin: 187.72ft

Stop Sequence:

#	N#	Color	St.	Code	Name	Chart
1.	5		1,598		R51 G204 B204	
2.	12		4,686		R255 G156 B158	
3.	5		475		R51 G204 B204	
4.	9		9,313		R255 G255 B255	
5.	11		24,461		R105 G0 B0	

Color Film

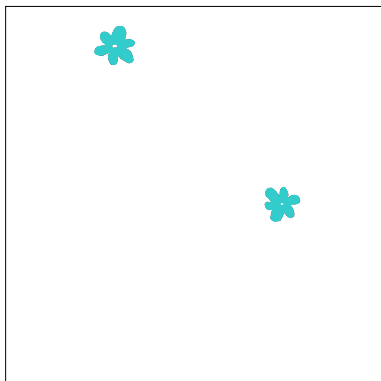
Wilcom EmbroideryStudio - Designing

8 INCH

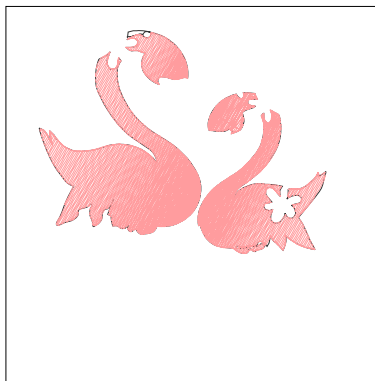
Design: **8 inch**

Title:

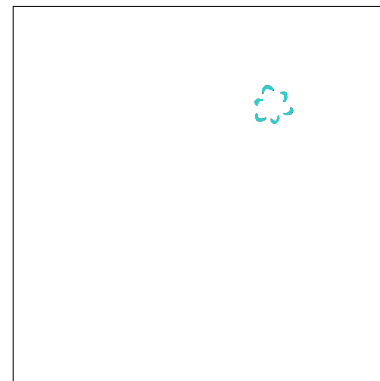
Stitches: 40,535
Height: 8.02 in
Width: 7.47 in
Colors: 4
Colorway: Colorway 1
Zoom: 0.23



Stop #: 1
Element:
Code:
Name: R51 G204 B204
Chart:
Stitches: 1,598
Thread used: 26.01ft



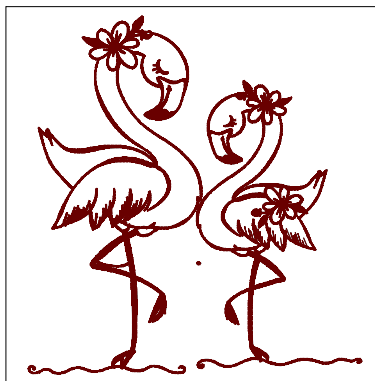
Stop #: 2
Element:
Code:
Name: R255 G156 B158
Chart:
Stitches: 4,686
Thread used: 91.31ft



Stop #: 3
Element:
Code:
Name: R51 G204 B204
Chart:
Stitches: 475
Thread used: 5.10ft



Stop #: 4
Element:
Code:
Name: R255 G255 B255
Chart:
Stitches: 9,313
Thread used: 126.29ft



Stop #: 5
Element:
Code:
Name: R105 G0 B0
Chart:
Stitches: 24,461
Thread used: 334.03ft

Production Summary

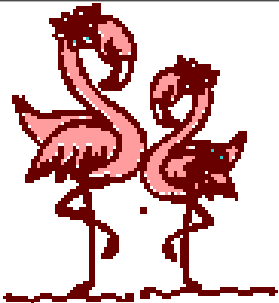
Wilcom EmbroideryStudio - Designing

8 INCH

Design: **8 inch**

Title:

Stitches: 40,535
 Height: 8.02 in
 Width: 7.47 in
 Colors: 4



Machine format: Tajima
 Color changes: 4
 Stops: 5
 Trims: 101
 Hoop: <None>
 Max stitch: 9.7 mm
 Min stitch: 0.0 mm
 Max jump: 7.0 mm

Left: 99.2 mm
 Right: 90.6 mm
 Up: 112.1 mm
 Down: 91.5 mm
 EndX: 0.00 in
 EndY: 0.00 in
 Area: 59.89 in²
 Total thread: 584.39ft
 Total bobbin: 187.72ft

Colorway		Colorway 1	
Background			
Product		Blanks\Blank	
Stop	Color	Stitches	
1	5	1,598	R51 G204 B204
2	12	4,686	R255 G156 B158
3	5	475	R51 G204 B204
4	9	9,313	R255 G255 B255
5	11	24,461	R105 G0 B0