

Production Worksheet

Wilcom EmbroideryStudio - Designing



Design: **3**

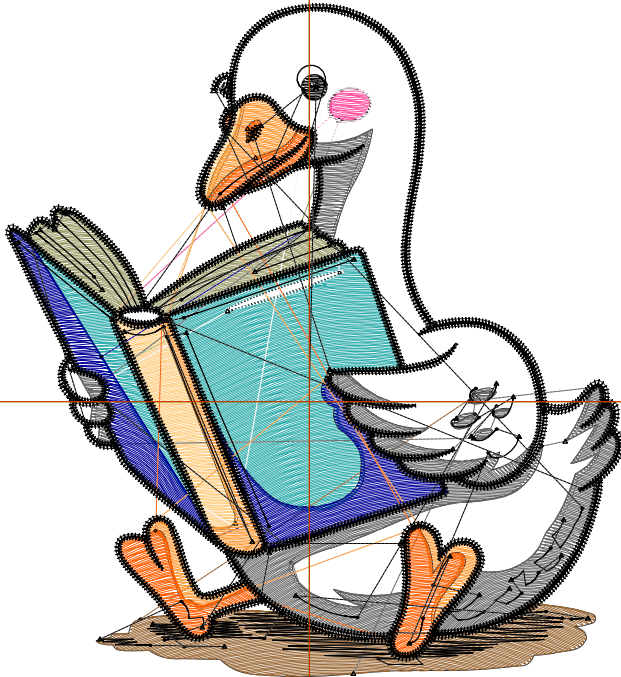
Title:

Stitches: 19,287
 Height: 3.50 in
 Width: 3.22 in
 Colors: 11
 Colorway: Colorway 1
 Zoom: 1:1

Machine format: Tajima
 Color changes: 10
 Stops: 11
 Trims: 77
 Appliqués: 0
 Left: 40.2 mm
 Right: 41.7 mm
 Up: 52.7 mm
 Down: 36.3 mm
 EndX: 0.00 in
 EndY: 0.00 in
 Area 11.29 in²
 Max stitch: 7.0 mm
 Min stitch: 0.0 mm
 Max jump: 7.0 mm
 Total thread: 256.90ft
 Total bobbin: 75.10ft

Stop Sequence:

#	N#	Color	St.	Code	Name	Chart
1.	2		1,739	R43	G171 B171	
2.	3		88	R255	G83 B161	
3.	19		623	19	Khaki	Default
4.	16		643	16	Sand	Default
5.	9		3,849	9	White	Default
6.	14		811	14	Brown	Default
7.	18		2,356	18	Grey	Default
8.	10		1,204	10	Dark Blue	Default
9.	12		1,060	12	Orange	Default
10.	4		951	R255	G94 B1	
11.	8		5,961	8	Black	Default



Production Worksheet

Wilcom EmbroideryStudio - Designing



Design: **4**

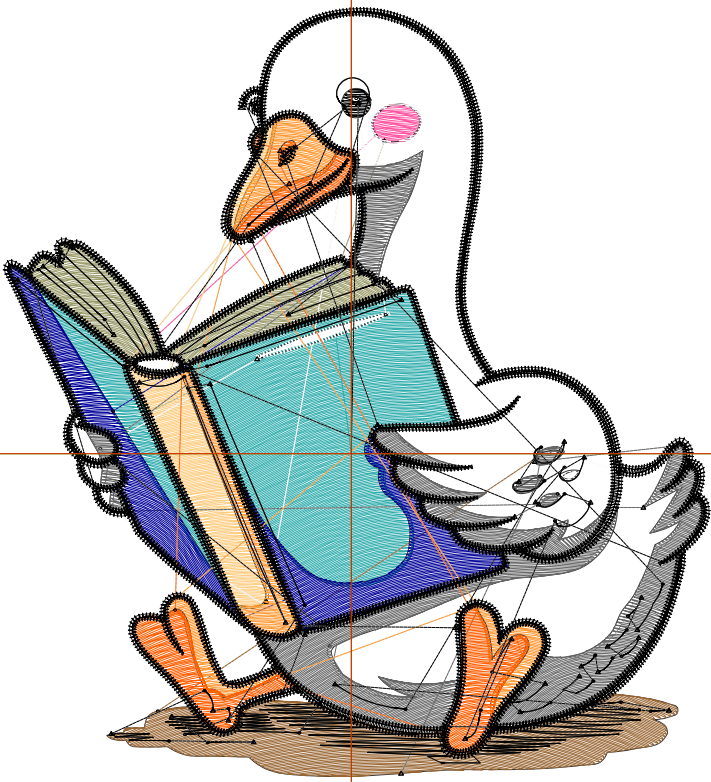
Title:

Stitches: 23,174
 Height: 4.00 in
 Width: 3.68 in
 Colors: 11
 Colorway: Colorway 1
 Zoom: 1:1

Machine format: Tajima
 Color changes: 10
 Stops: 11
 Trims: 82
 Appliqués: 0
 Left: 46.0 mm
 Right: 47.5 mm
 Up: 59.0 mm
 Down: 42.7 mm
 EndX: 0.00 in
 EndY: 0.00 in
 Area 14.74 in²
 Max stitch: 7.0 mm
 Min stitch: 0.0 mm
 Max jump: 7.0 mm
 Total thread: 315.88ft
 Total bobbin: 94.94ft

Stop Sequence:

#	N#	Color	St.	Code	Name	Chart
1.	2		2,229	R43	G171 B171	
2.	3		105	R255	G83 B161	
3.	19		792	19	Khaki	Default
4.	16		788	16	Sand	Default
5.	9		4,744	9	White	Default
6.	14		1,014	14	Brown	Default
7.	18		2,888	18	Grey	Default
8.	10		1,404	10	Dark Blue	Default
9.	12		1,286	12	Orange	Default
10.	4		1,128	R255	G94 B1	
11.	8		6,794	8	Black	Default



Production Worksheet

Wilcom EmbroideryStudio - Designing



Design: **4**

Title:

Stitches: 27,349
 Height: 4.50 in
 Width: 4.14 in
 Colors: 11
 Colorway: Colorway 1
 Zoom: 1:1

Machine format: Tajima
 Color changes: 10
 Stops: 11
 Trims: 86
 Appliqués: 0
 Left: 51.9 mm
 Right: 53.3 mm
 Up: 65.4 mm
 Down: 49.0 mm
 EndX: 0.00 in
 EndY: 0.00 in
 Area: 18.65 in²
 Max stitch: 7.0 mm
 Min stitch: 0.0 mm
 Max jump: 7.0 mm
 Total thread: 380.86ft
 Total bobbin: 117.21ft

Stop Sequence:

#	N#	Color	St.	Code	Name	Chart
1.	2		2,752	R43	G171 B171	
2.	3		128	R255	G83 B161	
3.	19		973	19	Khaki	Default
4.	16		948	16	Sand	Default
5.	9		5,767	9	White	Default
6.	14		1,218	14	Brown	Default
7.	18		3,420	18	Grey	Default
8.	10		1,714	10	Dark Blue	Default
9.	12		1,526	12	Orange	Default
10.	4		1,344	R255	G94 B1	
11.	8		7,557	8	Black	Default



Production Worksheet

Wilcom EmbroideryStudio - Designing



Design: **5**

Title:

Stitches: 31,833
 Height: 5.00 in
 Width: 4.60 in
 Colors: 11
 Colorway: Colorway 1
 Zoom: 1:1

Machine format: Tajima
 Color changes: 10
 Stops: 11
 Trims: 86
 Appliqués: 0
 Left: 57.7 mm
 Right: 59.1 mm
 Up: 71.7 mm
 Down: 55.3 mm
 EndX: 0.00 in
 EndY: 0.00 in
 Area: 23.01 in²
 Max stitch: 7.0 mm
 Min stitch: 0.0 mm
 Max jump: 7.0 mm
 Total thread: 452.47ft
 Total bobbin: 142.21ft

Stop Sequence:

#	N#	Color	St.	Code	Name	Chart
1.	2		3,255	R43	G171 B171	
2.	3		144	R255	G83 B161	
3.	19		1,154	19	Khaki	Default
4.	16		1,127	16	Sand	Default
5.	9		6,947	9	White	Default
6.	14		1,452	14	Brown	Default
7.	18		4,054	18	Grey	Default
8.	10		2,044	10	Dark Blue	Default
9.	12		1,766	12	Orange	Default
10.	4		1,570	R255	G94 B1	
11.	8		8,318	8	Black	Default



Production Worksheet

Wilcom EmbroideryStudio - Designing



Design: **5**

Title:

Stitches: 36,530
 Height: 5.51 in
 Width: 5.06 in
 Colors: 11
 Colorway: Colorway 1
 Zoom: 1:1



Machine format: Tajima
 Color changes: 10
 Stops: 11
 Trims: 88
 Appliqués: 0
 Left: 63.5 mm
 Right: 64.9 mm
 Up: 78.1 mm
 Down: 61.8 mm
 EndX: 0.00 in
 EndY: 0.00 in
 Area: 27.84 in²
 Max stitch: 7.0 mm
 Min stitch: 0.0 mm
 Max jump: 7.0 mm
 Total thread: 528.54ft
 Total bobbin: 169.03ft

Stop Sequence:

#	N#	Color	St.	Code	Name	Chart
1.	2		3,837	R43	G171 B171	
2.	3		162	R255	G83 B161	
3.	19		1,329	19	Khaki	Default
4.	16		1,308	16	Sand	Default
5.	9		8,218	9	White	Default
6.	14		1,683	14	Brown	Default
7.	18		4,740	18	Grey	Default
8.	10		2,310	10	Dark Blue	Default
9.	12		2,039	12	Orange	Default
10.	4		1,786	R255	G94 B1	
11.	8		9,116	8	Black	Default

Production Worksheet

Wilcom EmbroideryStudio - Designing



Design: **6**

Title:

Stitches: 41,698
Height: 6.01 in
Width: 5.52 in
Colors: 11
Colorway: Colorway 1
Zoom: 1:1



1

1

2

2

Production Worksheet

Wilcom EmbroideryStudio - Designing



Design: **6**

Title:

Stitches: 41,698
 Height: 6.01 in
 Width: 5.52 in
 Colors: 11
 Colorway: Colorway 1
 Zoom: 1:1

Machine format: Tajima
 Color changes: 10
 Stops: 11
 Trims: 87
 Appliqués: 0
 Left: 69.3 mm
 Right: 70.8 mm
 Up: 84.4 mm
 Down: 68.1 mm
 EndX: 0.00 in
 EndY: 0.00 in
 Area 33.13 in²
 Max stitch: 7.0 mm
 Min stitch: 0.0 mm
 Max jump: 7.0 mm
 Total thread: 613.29ft
 Total bobbin: 199.15ft

Stop Sequence:

#	N#	Color	St.	Code	Name	Chart
1.	2		4,506		R43 G171 B171	
2.	3		187		R255 G83 B161	
3.	19		1,532	19	Khaki	Default
4.	16		1,516	16	Sand	Default
5.	9		9,581	9	White	Default
6.	14		1,968	14	Brown	Default
7.	18		5,378	18	Grey	Default
8.	10		2,756	10	Dark Blue	Default
9.	12		2,304	12	Orange	Default
10.	4		2,074		R255 G94 B1	
11.	8		9,894	8	Black	Default

Production Worksheet

Wilcom EmbroideryStudio - Designing



Design: **6**

Title:

Stitches: 47,141
Height: 6.51 in
Width: 5.98 in
Colors: 11
Colorway: Colorway 1
Zoom: 1:1



1

2

2

Production Worksheet

Wilcom EmbroideryStudio - Designing



Design: **6**

Title:

Stitches: 47,141
 Height: 6.51 in
 Width: 5.98 in
 Colors: 11
 Colorway: Colorway 1
 Zoom: 1:1

Machine format: Tajima
 Color changes: 10
 Stops: 11
 Trims: 87
 Appliqués: 0
 Left: 75.2 mm
 Right: 76.6 mm
 Up: 90.8 mm
 Down: 74.5 mm
 EndX: 0.00 in
 EndY: 0.00 in
 Area 38.87 in²
 Max stitch: 7.0 mm
 Min stitch: 0.0 mm
 Max jump: 7.0 mm
 Total thread: 703.57ft
 Total bobbin: 231.49ft

Stop Sequence:

#	N#	Color	St.	Code	Name	Chart
1.	2		5,198		R43 G171 B171	
2.	3		207		R255 G83 B161	
3.	19		1,761	19	Khaki	Default
4.	16		1,728	16	Sand	Default
5.	9		11,014	9	White	Default
6.	14		2,250	14	Brown	Default
7.	18		6,211	18	Grey	Default
8.	10		3,141	10	Dark Blue	Default
9.	12		2,627	12	Orange	Default
10.	4		2,346		R255 G94 B1	
11.	8		10,656	8	Black	Default

Production Worksheet

Wilcom EmbroideryStudio - Designing



Design: **7**

Title:

Stitches: 52,621
Height: 7.01 in
Width: 6.43 in
Colors: 11
Colorway: Colorway 1
Zoom: 1:1



Production Worksheet

Wilcom EmbroideryStudio - Designing



Design: **7**

Title:

Stitches: 52,621
 Height: 7.01 in
 Width: 6.43 in
 Colors: 11
 Colorway: Colorway 1
 Zoom: 1:1

Machine format: Tajima
 Color changes: 10
 Stops: 11
 Trims: 87
 Appliqués: 0
 Left: 81.0 mm
 Right: 82.4 mm
 Up: 97.1 mm
 Down: 80.8 mm
 EndX: 0.00 in
 EndY: 0.00 in
 Area 45.07 in²
 Max stitch: 7.0 mm
 Min stitch: 0.0 mm
 Max jump: 7.0 mm
 Total thread: 796.84ft
 Total bobbin: 265.45ft

Stop Sequence:

#	N#	Color	St.	Code	Name	Chart
1.	2		5,905		R43 G171 B171	
2.	3		233		R255 G83 B161	
3.	19		2,019	19	Khaki	Default
4.	16		1,959	16	Sand	Default
5.	9		12,519	9	White	Default
6.	14		2,554	14	Brown	Default
7.	18		6,949	18	Grey	Default
8.	10		3,463	10	Dark Blue	Default
9.	12		2,927	12	Orange	Default
10.	4		2,649		R255 G94 B1	
11.	8		11,442	8	Black	Default

Production Worksheet

Wilcom EmbroideryStudio - Designing



Design: 7

Title:

Stitches: 58,780
Height: 7.51 in
Width: 6.89 in
Colors: 11
Colorway: Colorway 1
Zoom: 1:1



Production Worksheet

Wilcom EmbroideryStudio - Designing



Design: **7**

Title:

Stitches: 58,780
 Height: 7.51 in
 Width: 6.89 in
 Colors: 11
 Colorway: Colorway 1
 Zoom: 1:1

Machine format: Tajima
 Color changes: 10
 Stops: 11
 Trims: 87
 Appliqués: 0
 Left: 86.8 mm
 Right: 88.3 mm
 Up: 103.5 mm
 Down: 87.2 mm
 EndX: 0.00 in
 EndY: 0.00 in
 Area 51.73 in²
 Max stitch: 7.0 mm
 Min stitch: 0.0 mm
 Max jump: 7.0 mm
 Total thread: 900.29ft
 Total bobbin: 302.81ft

Stop Sequence:

#	N#	Color	St.	Code	Name	Chart
1.	2		6,680		R43 G171 B171	
2.	3		258		R255 G83 B161	
3.	19		2,290	19	Khaki	Default
4.	16		2,189	16	Sand	Default
5.	9		14,260	9	White	Default
6.	14		2,910	14	Brown	Default
7.	18		7,724	18	Grey	Default
8.	10		4,019	10	Dark Blue	Default
9.	12		3,263	12	Orange	Default
10.	4		2,960		R255 G94 B1	
11.	8		12,225	8	Black	Default