

# Production Worksheet

Wilcom EmbroideryStudio - Designing



Design: **3 inch**

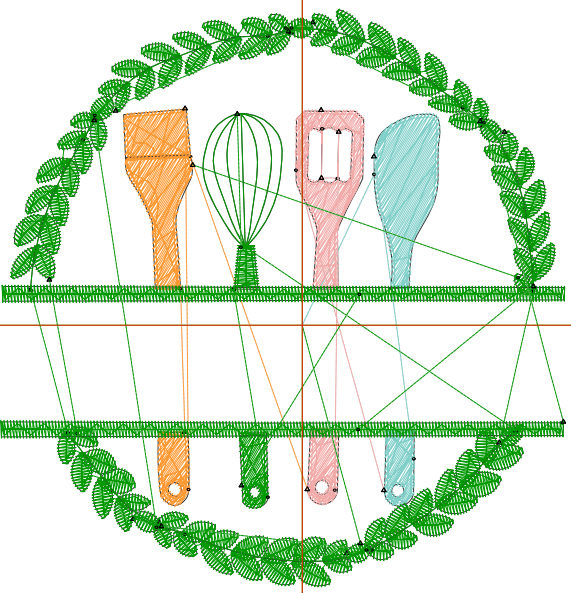
Title:

Stitches: 6,379  
 Height: 3.01 in  
 Width: 2.94 in  
 Colors: 4  
 Colorway: Colorway 1  
 Zoom: 1:1

Machine format: Tajima  
 Color changes: 3  
 Stops: 4  
 Trims: 32  
 Appliqués: 0  
 Left: 39.8 mm  
 Right: 34.7 mm  
 Up: 41.8 mm  
 Down: 34.6 mm  
 EndX: 0.00 in  
 EndY: 0.00 in  
 Area: 8.84 in<sup>2</sup>  
 Max stitch: 6.9 mm  
 Min stitch: 0.3 mm  
 Max jump: 6.9 mm  
 Total thread: 95.51ft  
 Total bobbin: 31.02ft

Stop Sequence:

#	N#	Color	St.	Code	Name	Chart
1.	2		493		R128 G207 B201	
2.	4		633		R242 G170 B169	
3.	12		625	12	Orange	Default
4.	1		4,626		R0 G153 B0	



# Production Summary

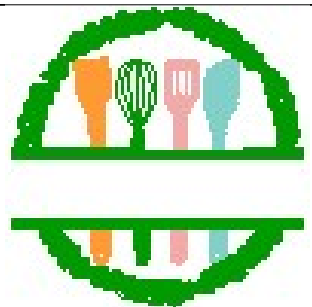
Wilcom EmbroideryStudio - Designing



Stitches: 6,379  
 Height: 3.01 in  
 Width: 2.94 in  
 Colors: 4

Design: **3 inch**

Title:



Machine format: Tajima  
 Color changes: 3  
 Stops: 4  
 Trims: 32  
 Hoop: <None>  
 Max stitch: 6.9 mm  
 Min stitch: 0.3 mm  
 Max jump: 6.9 mm

Left: 39.8 mm  
 Right: 34.7 mm  
 Up: 41.8 mm  
 Down: 34.6 mm  
 EndX: 0.00 in  
 EndY: 0.00 in  
 Area: 8.84 in<sup>2</sup>  
 Total thread: 95.51ft  
 Total bobbin: 31.02ft

Colorway			Colorway 1
Background			
Product			Blanks\Blank
Stop	Color	Stitches	
1	2	493	R128 G207 B201
2	4	633	R242 G170 B169
3	12	625	12 Orange Default
4	1	4,626	R0 G153 B0

# Production Worksheet

Wilcom EmbroideryStudio - Designing



Design: **4 inch**

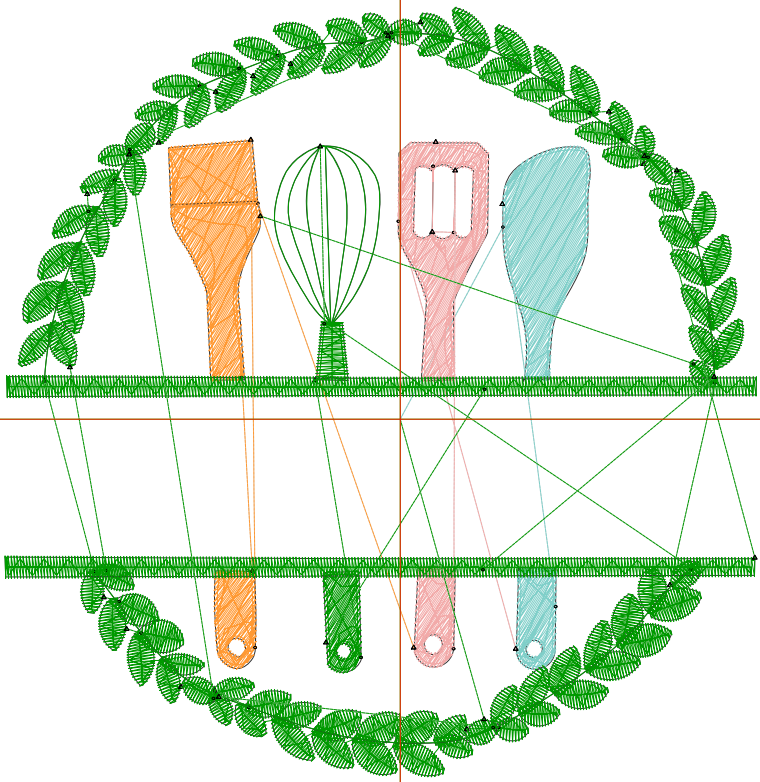
Title:

Stitches: 8,776  
 Height: 4.01 in  
 Width: 3.91 in  
 Colors: 4  
 Colorway: Colorway 1  
 Zoom: 1:1

Machine format: Tajima  
 Color changes: 3  
 Stops: 4  
 Trims: 39  
 Appliqués: 0  
 Left: 52.3 mm  
 Right: 47.1 mm  
 Up: 54.5 mm  
 Down: 47.3 mm  
 EndX: 0.00 in  
 EndY: 0.00 in  
 Area: 15.70 in<sup>2</sup>  
 Max stitch: 6.8 mm  
 Min stitch: 0.1 mm  
 Max jump: 6.8 mm  
 Total thread: 147.04ft  
 Total bobbin: 52.23ft

Stop Sequence:

#	N#	Color	St.	Code	Name	Chart
1.	2		747		R128 G207 B201	
2.	4		899		R242 G170 B169	
3.	12		917	12	Orange	Default
4.	1		6,211		R0 G153 B0	



# Production Summary

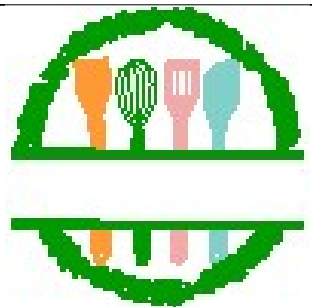
Wilcom EmbroideryStudio - Designing



Stitches: 8,776  
 Height: 4.01 in  
 Width: 3.91 in  
 Colors: 4

Design: **4 inch**

Title:



Machine format: Tajima  
 Color changes: 3  
 Stops: 4  
 Trims: 39  
 Hoop: <None>  
 Max stitch: 6.8 mm  
 Min stitch: 0.1 mm  
 Max jump: 6.8 mm

Left: 52.3 mm  
 Right: 47.1 mm  
 Up: 54.5 mm  
 Down: 47.3 mm  
 EndX: 0.00 in  
 EndY: 0.00 in  
 Area: 15.70 in<sup>2</sup>  
 Total thread: 147.04ft  
 Total bobbin: 52.23ft

Colorway			Colorway 1
Background			
Product			Blanks\Blank
Stop	Color	Stitches	
1	2	747	R128 G207 B201
2	4	899	R242 G170 B169
3	12	917	12 Orange Default
4	1	6,211	R0 G153 B0

# Production Worksheet

Wilcom EmbroideryStudio - Designing



Design: **5 inch**

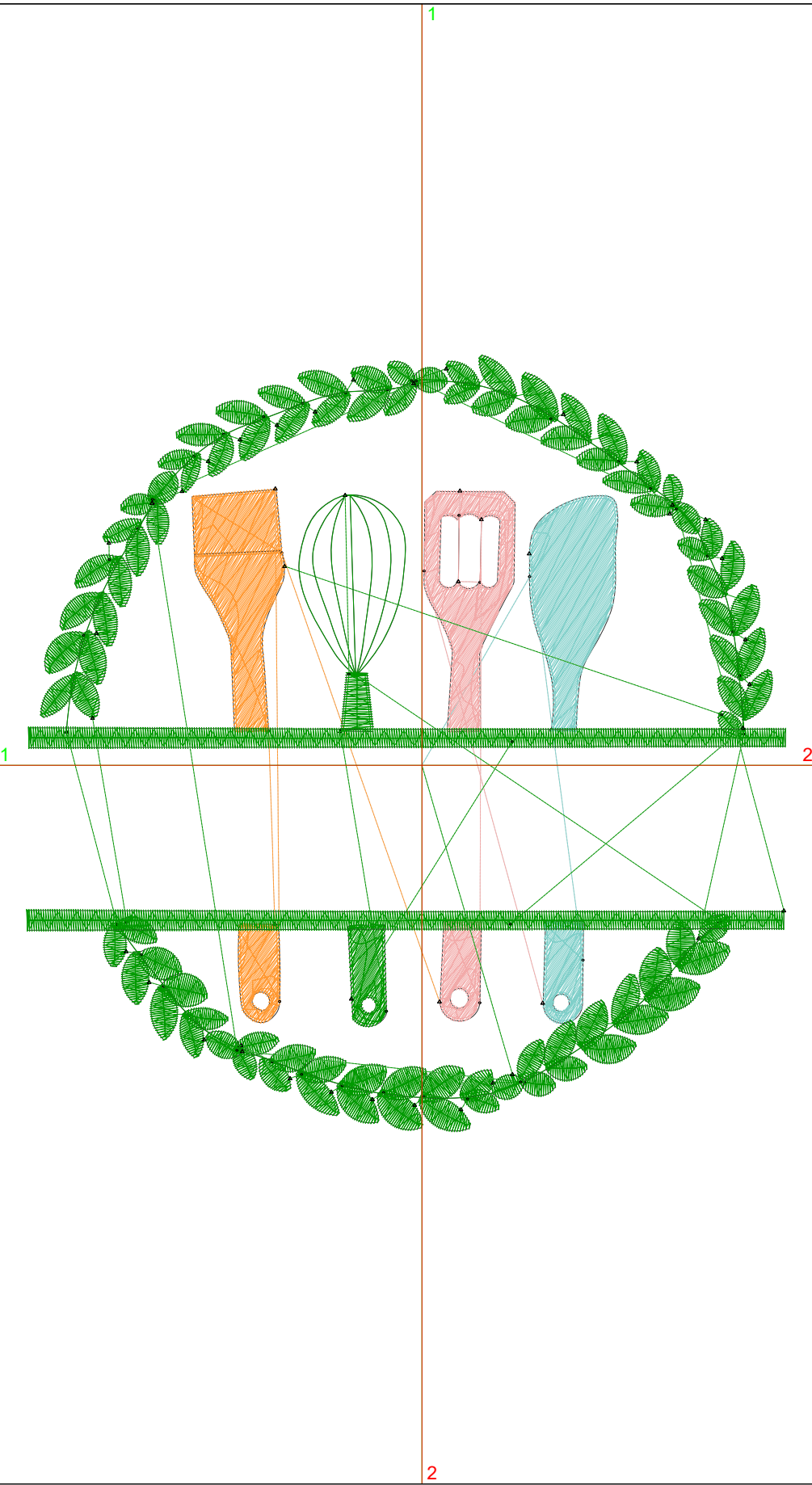
Title:

Stitches: 11,422  
 Height: 5.01 in  
 Width: 4.89 in  
 Colors: 4  
 Colorway: Colorway 1  
 Zoom: 1:1

Machine format: Tajima  
 Color changes: 3  
 Stops: 4  
 Trims: 51  
 Appliqués: 0  
 Left: 64.7 mm  
 Right: 59.6 mm  
 Up: 67.3 mm  
 Down: 60.0 mm  
 EndX: 0.00 in  
 EndY: 0.00 in  
 Area: 24.51 in<sup>2</sup>  
 Max stitch: 8.6 mm  
 Min stitch: 0.1 mm  
 Max jump: 7.0 mm  
 Total thread: 210.51ft  
 Total bobbin: 79.56ft

Stop Sequence:

#	N#	Color	St.	Code	Name	Chart
1.	2		1,045	R128	G207 B201	
2.	4		1,183	R242	G170 B169	
3.	12		1,255	12	Orange	Default
4.	1		7,937	R0	G153 B0	



# Production Summary

Wilcom EmbroideryStudio - Designing



Stitches: 11,422  
 Height: 5.01 in  
 Width: 4.89 in  
 Colors: 4

Design: **5 inch**

Title:



Machine format: Tajima  
 Color changes: 3  
 Stops: 4  
 Trims: 51  
 Hoop: <None>  
 Max stitch: 8.6 mm  
 Min stitch: 0.1 mm  
 Max jump: 7.0 mm

Left: 64.7 mm  
 Right: 59.6 mm  
 Up: 67.3 mm  
 Down: 60.0 mm  
 EndX: 0.00 in  
 EndY: 0.00 in  
 Area: 24.51 in<sup>2</sup>  
 Total thread: 210.51ft  
 Total bobbin: 79.56ft

Colorway			Colorway 1
Background			
Product			Blanks\Blank
Stop	Color	Stitches	
1	2	1,045	R128 G207 B201
2	4	1,183	R242 G170 B169
3	12	1,255	12 Orange Default
4	1	7,937	R0 G153 B0

# Production Worksheet

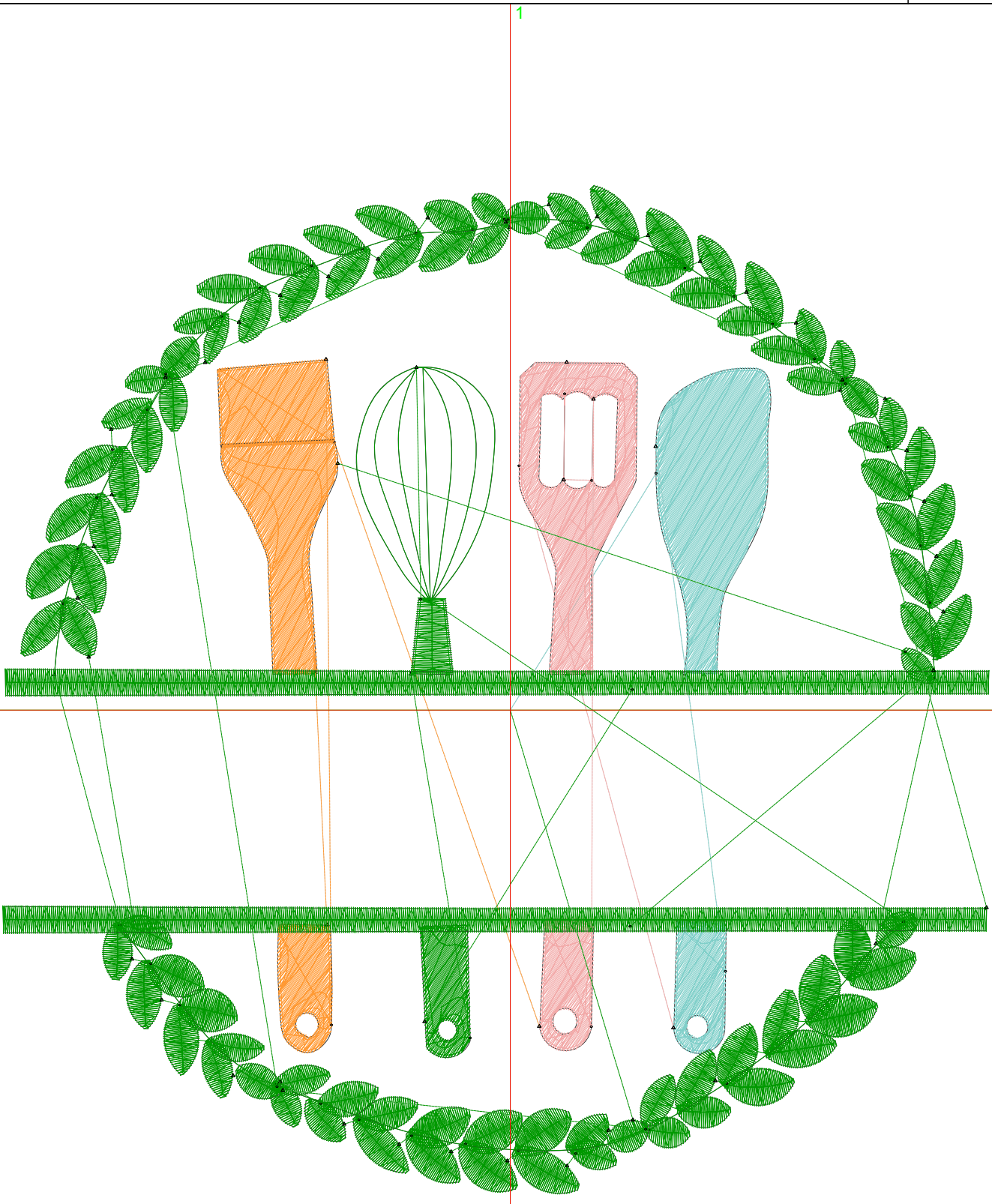
Wilcom EmbroideryStudio - Designing



Design: **6 inch**

Title:

Stitches: 17,375  
Height: 7.01 in  
Width: 6.85 in  
Colors: 4  
Colorway: Colorway 1  
Zoom: 1:1



# Production Worksheet

Wilcom EmbroideryStudio - Designing



Design: **6 inch**

Title:

Stitches: 17,375  
 Height: 7.01 in  
 Width: 6.85 in  
 Colors: 4  
 Colorway: Colorway 1  
 Zoom: 1:1

Machine format: Tajima  
 Color changes: 3  
 Stops: 4  
 Trims: 58  
 Appliqués: 0  
 Left: 89.5 mm  
 Right: 84.4 mm  
 Up: 92.7 mm  
 Down: 85.4 mm  
 EndX: 0.00 in  
 EndY: 0.00 in  
 Area 48.01 in<sup>2</sup>  
 Max stitch: 11.7 mm  
 Min stitch: 0.1 mm  
 Max jump: 7.0 mm  
 Total thread: 373.78ft  
 Total bobbin: 153.16ft

Stop Sequence:

#	N#	Color	St.	Code	Name	Chart
1.	2		1,793		R128 G207 B201	
2.	4		1,882		R242 G170 B169	
3.	12		2,081	12	Orange	Default
4.	1		11,617		R0 G153 B0	

# Production Summary

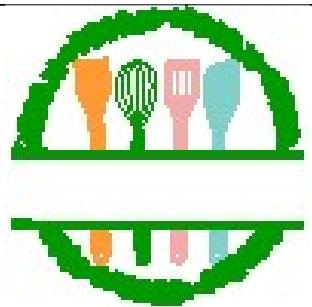
Wilcom EmbroideryStudio - Designing



Stitches: 17,375  
 Height: 7.01 in  
 Width: 6.85 in  
 Colors: 4

Design: **6 inch**

Title:



Machine format: Tajima  
 Color changes: 3  
 Stops: 4  
 Trims: 58  
 Hoop: <None>  
 Max stitch: 11.7 mm  
 Min stitch: 0.1 mm  
 Max jump: 7.0 mm

Left: 89.5 mm  
 Right: 84.4 mm  
 Up: 92.7 mm  
 Down: 85.4 mm  
 EndX: 0.00 in  
 EndY: 0.00 in  
 Area: 48.01 in<sup>2</sup>  
 Total thread: 373.78ft  
 Total bobbin: 153.16ft

Colorway			Colorway 1
Background			
Product			Blanks\Blank
Stop	Color	Stitches	
1	2	1,793	R128 G207 B201
2	4	1,882	R242 G170 B169
3	12	2,081	12 Orange Default
4	1	11,617	R0 G153 B0

# Production Worksheet

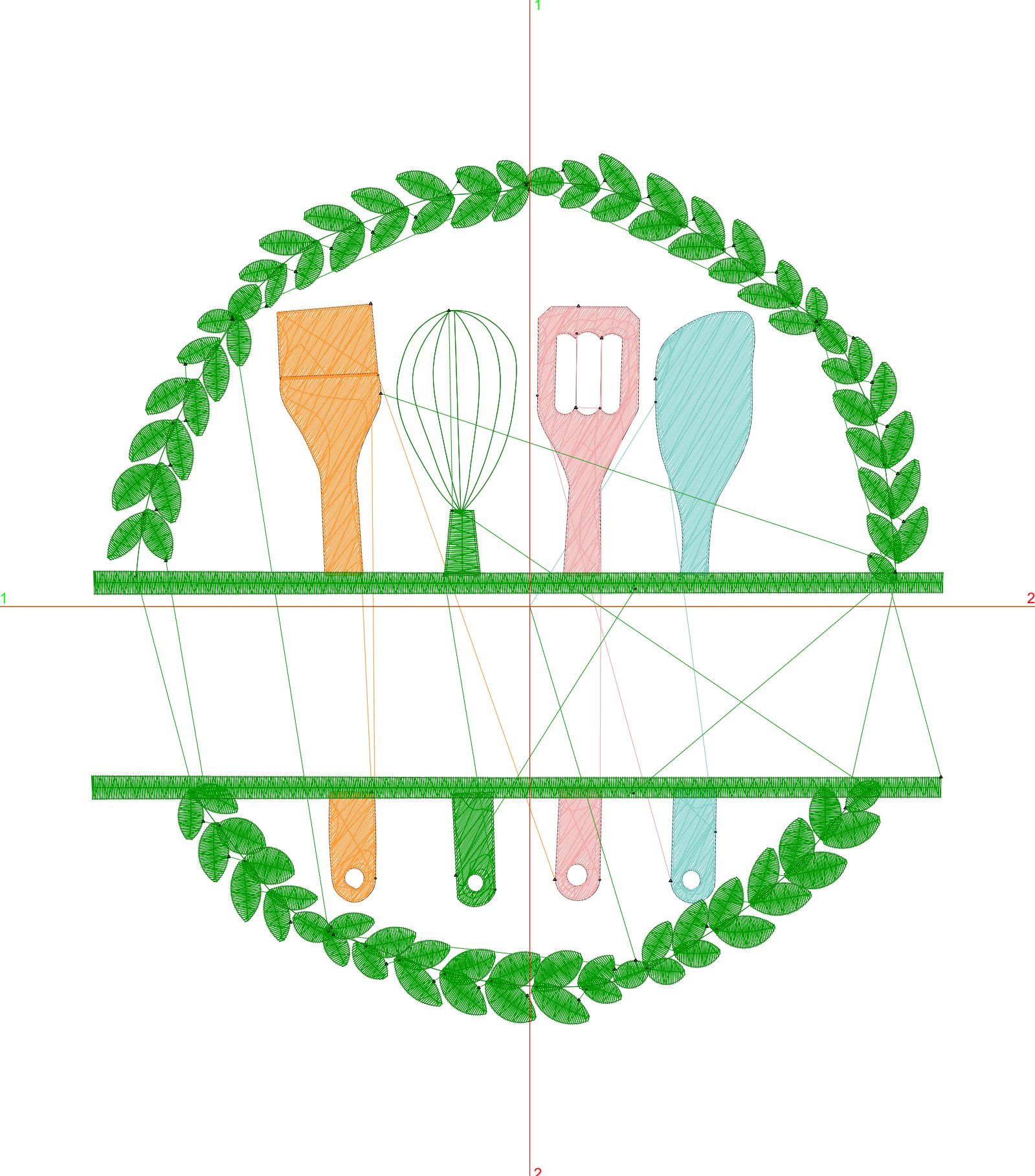
Wilcom EmbroideryStudio - Designing



Design: **7 inch**

Title:

Stitches: 17,375  
Height: 7.01 in  
Width: 6.85 in  
Colors: 4  
Colorway: Colorway 1  
Zoom: 1:1



# Production Worksheet

Wilcom EmbroideryStudio - Designing



Design: **7 inch**

Title:

Stitches: 17,375  
 Height: 7.01 in  
 Width: 6.85 in  
 Colors: 4  
 Colorway: Colorway 1  
 Zoom: 1:1

Machine format: Tajima  
 Color changes: 3  
 Stops: 4  
 Trims: 58  
 Appliqués: 0  
 Left: 89.5 mm  
 Right: 84.4 mm  
 Up: 92.7 mm  
 Down: 85.4 mm  
 EndX: 0.00 in  
 EndY: 0.00 in  
 Area 48.01 in<sup>2</sup>  
 Max stitch: 11.7 mm  
 Min stitch: 0.1 mm  
 Max jump: 7.0 mm  
 Total thread: 373.78ft  
 Total bobbin: 153.16ft

Stop Sequence:

#	N#	Color	St.	Code	Name	Chart
1.	2		1,793		R128 G207 B201	
2.	4		1,882		R242 G170 B169	
3.	12		2,081	12	Orange	Default
4.	1		11,617		R0 G153 B0	

# Production Summary

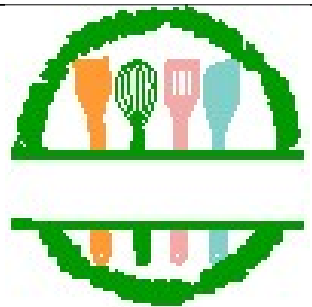
Wilcom EmbroideryStudio - Designing



Stitches: 17,375  
 Height: 7.01 in  
 Width: 6.85 in  
 Colors: 4

Design: **7 inch**

Title:



Machine format: Tajima  
 Color changes: 3  
 Stops: 4  
 Trims: 58  
 Hoop: <None>  
 Max stitch: 11.7 mm  
 Min stitch: 0.1 mm  
 Max jump: 7.0 mm

Left: 89.5 mm  
 Right: 84.4 mm  
 Up: 92.7 mm  
 Down: 85.4 mm  
 EndX: 0.00 in  
 EndY: 0.00 in  
 Area: 48.01 in<sup>2</sup>  
 Total thread: 373.78ft  
 Total bobbin: 153.16ft

Colorway			Colorway 1
Background			
Product			Blanks\Blank
Stop	Color	Stitches	
1	2	1,793	R128 G207 B201
2	4	1,882	R242 G170 B169
3	12	2,081	12 Orange Default
4	1	11,617	R0 G153 B0