

# Production Worksheet

Wilcom EmbroideryStudio - Designing



Design: **3**

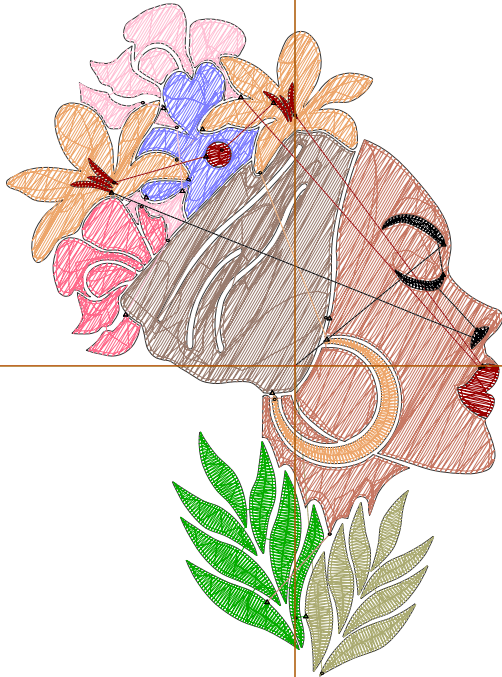
Title:

Stitches: 8,141  
 Height: 3.50 in  
 Width: 2.58 in  
 Colors: 10  
 Colorway: Colorway 1  
 Zoom: 1:1

Machine format: Tajima  
 Color changes: 9  
 Stops: 10  
 Trims: 19  
 Appliqués: 0  
 Left: 38.1 mm  
 Right: 27.5 mm  
 Up: 47.9 mm  
 Down: 41.0 mm  
 EndX: 0.00 in  
 EndY: 0.00 in  
 Area 9.03 in<sup>2</sup>  
 Max stitch: 11.6 mm  
 Min stitch: 0.0 mm  
 Max jump: 6.9 mm  
 Total thread: 128.75ft  
 Total bobbin: 42.69ft

Stop Sequence:

#	N#	Color	St.	Code	Name	Chart
1.	1		762		R171 G171 B114	
2.	10		904		R6 G173 B0	
3.	4		1,612		R199 G120 B100	
4.	3		1,199		R153 G124 B111	
5.	5		1,323		R237 G166 B107	
6.	20		444	20	Powder Blue	Default
7.	7		586		R255 G105 B138	
8.	8		706		R255 G192 B213	
9.	11		400	11	Dark Red	Default
10.	9		203		R1 G1 B3	



# Production Worksheet

Wilcom EmbroideryStudio - Designing



Design: **4**

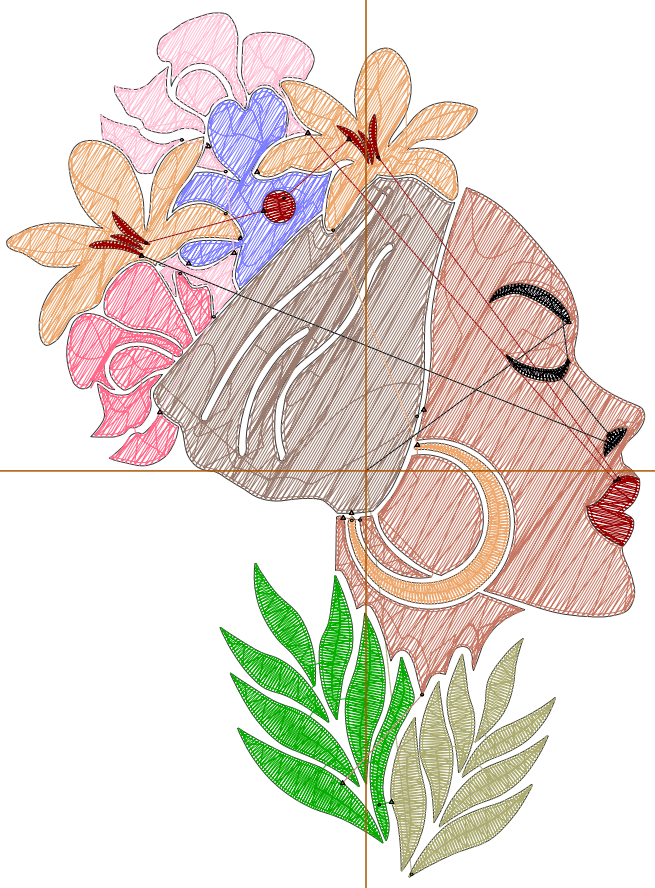
Title:

Stitches: 11,118  
 Height: 4.50 in  
 Width: 3.32 in  
 Colors: 10  
 Colorway: Colorway 1  
 Zoom: 1:1

Machine format: Tajima  
 Color changes: 9  
 Stops: 10  
 Trims: 20  
 Appliqués: 0  
 Left: 47.5 mm  
 Right: 36.9 mm  
 Up: 60.6 mm  
 Down: 53.7 mm  
 EndX: 0.00 in  
 EndY: 0.00 in  
 Area: 14.94 in<sup>2</sup>  
 Max stitch: 11.7 mm  
 Min stitch: 0.0 mm  
 Max jump: 6.9 mm  
 Total thread: 189.80ft  
 Total bobbin: 67.30ft

Stop Sequence:

#	N#	Color	St.	Code	Name	Chart
1.	1		995		R171 G171 B114	
2.	10		1,178		R6 G173 B0	
3.	4		2,324		R199 G120 B100	
4.	3		1,776		R153 G124 B111	
5.	5		1,781		R237 G166 B107	
6.	20		604	20	Powder Blue	Default
7.	7		792		R255 G105 B138	
8.	8		920		R255 G192 B213	
9.	11		503	11	Dark Red	Default
10.	9		243		R1 G1 B3	



# Production Worksheet

Wilcom EmbroideryStudio - Designing



Design: **5**

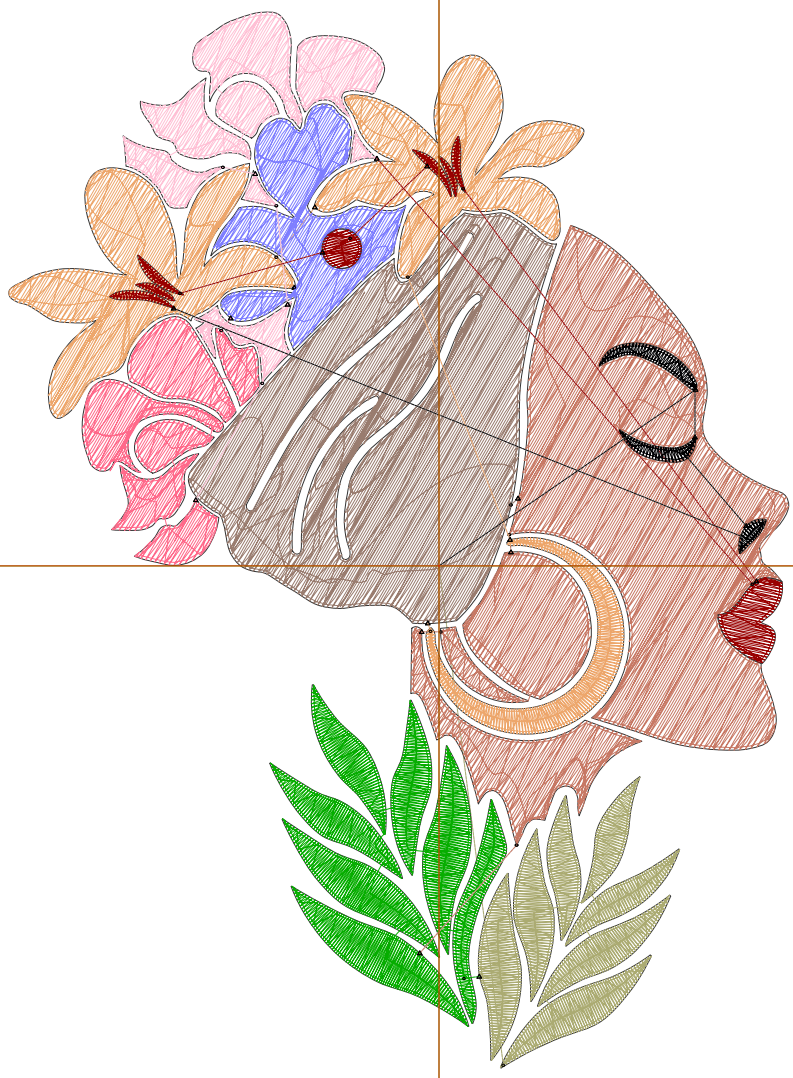
Title:

Stitches: 14,354  
 Height: 5.50 in  
 Width: 4.06 in  
 Colors: 10  
 Colorway: Colorway 1  
 Zoom: 1:1

Machine format: Tajima  
 Color changes: 9  
 Stops: 10  
 Trims: 21  
 Appliqués: 0  
 Left: 56.9 mm  
 Right: 46.2 mm  
 Up: 73.3 mm  
 Down: 66.4 mm  
 EndX: 0.00 in  
 EndY: 0.00 in  
 Area: 22.33 in<sup>2</sup>  
 Max stitch: 9.7 mm  
 Min stitch: 0.0 mm  
 Max jump: 7.0 mm  
 Total thread: 260.96ft  
 Total bobbin: 96.89ft

Stop Sequence:

#	N#	Color	St.	Code	Name	Chart
1.	1		1,241		R171 G171 B114	
2.	10		1,479		R6 G173 B0	
3.	4		3,096		R199 G120 B100	
4.	3		2,382		R153 G124 B111	
5.	5		2,286		R237 G166 B107	
6.	20		769	20	Powder Blue	Default
7.	7		1,001		R255 G105 B138	
8.	8		1,191		R255 G192 B213	
9.	11		617	11	Dark Red	Default
10.	9		290		R1 G1 B3	



# Production Worksheet

Wilcom EmbroideryStudio - Designing



Design: **6**

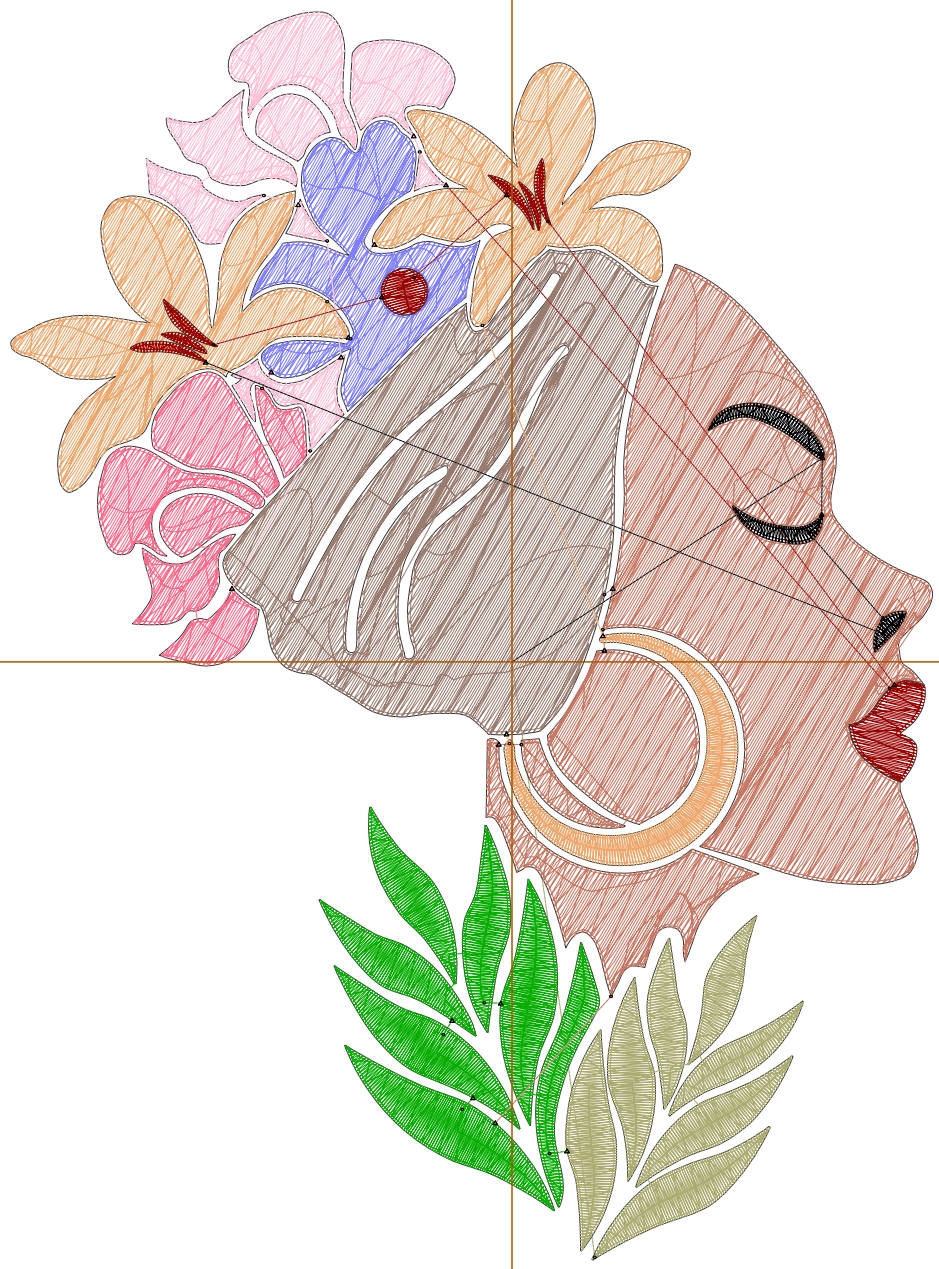
Title:

Stitches: 18,124  
 Height: 6.50 in  
 Width: 4.79 in  
 Colors: 10  
 Colorway: Colorway 1  
 Zoom: 1:1

Machine format: Tajima  
 Color changes: 9  
 Stops: 10  
 Trims: 25  
 Appliqués: 0  
 Left: 66.2 mm  
 Right: 55.5 mm  
 Up: 86.0 mm  
 Down: 79.1 mm  
 EndX: 0.00 in  
 EndY: 0.00 in  
 Area: 31.16 in<sup>2</sup>  
 Max stitch: 7.1 mm  
 Min stitch: 0.0 mm  
 Max jump: 6.9 mm  
 Total thread: 347.03ft  
 Total bobbin: 133.23ft

Stop Sequence:

#	N#	Color	St.	Code	Name	Chart
1.	1		1,509		R171 G171 B114	
2.	10		1,826		R6 G173 B0	
3.	4		4,019		R199 G120 B100	
4.	3		3,109		R153 G124 B111	
5.	5		2,900		R237 G166 B107	
6.	20		955	20	Powder Blue	Default
7.	7		1,247		R255 G105 B138	
8.	8		1,488		R255 G192 B213	
9.	11		731	11	Dark Red	Default
10.	9		338		R1 G1 B3	



# Production Worksheet

Wilcom EmbroideryStudio - Designing



Design: **7**

Title:

Stitches: 22,205  
Height: 7.50 in  
Width: 5.53 in  
Colors: 10  
Colorway: Colorway 1  
Zoom: 1:1



# Production Worksheet

Wilcom EmbroideryStudio - Designing



Design: **7**

Title:

Stitches: 22,205  
 Height: 7.50 in  
 Width: 5.53 in  
 Colors: 10  
 Colorway: Colorway 1  
 Zoom: 1:1

Machine format: Tajima  
 Color changes: 9  
 Stops: 10  
 Trims: 26  
 Appliqués: 0  
 Left: 75.6 mm  
 Right: 64.9 mm  
 Up: 98.7 mm  
 Down: 91.8 mm  
 EndX: 0.00 in  
 EndY: 0.00 in  
 Area 41.50 in<sup>2</sup>  
 Max stitch: 9.5 mm  
 Min stitch: 0.0 mm  
 Max jump: 7.0 mm  
 Total thread: 442.71ft  
 Total bobbin: 174.06ft

Stop Sequence:

#	N#	Color	St.	Code	Name	Chart
1.	1		1,795		R171 G171 B114	
2.	10		2,159		R6 G173 B0	
3.	4		5,022		R199 G120 B100	
4.	3		3,955		R153 G124 B111	
5.	5		3,572		R237 G166 B107	
6.	20		1,170	20	Powder Blue	Default
7.	7		1,508		R255 G105 B138	
8.	8		1,767		R255 G192 B213	
9.	11		863	11	Dark Red	Default
10.	9		392		R1 G1 B3	