

Production Worksheet

Wilcom EmbroideryStudio - Designing



Design: **3**

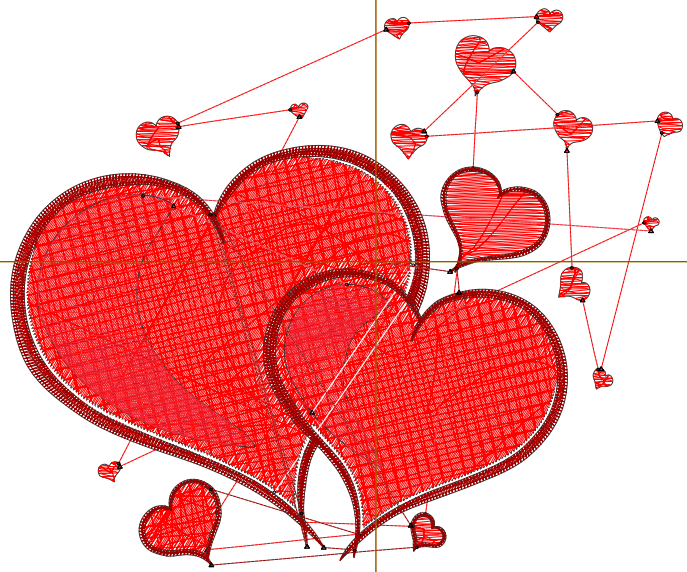
Title:

Stitches: 10,827
 Height: 2.89 in
 Width: 3.50 in
 Colors: 4
 Colorway: Colorway 1
 Zoom: 1:1

Machine format: Tajima
 Color changes: 3
 Stops: 4
 Trims: 27
 Appliqués: 0
 Left: 48.3 mm
 Right: 40.5 mm
 Up: 33.2 mm
 Down: 40.2 mm
 EndX: 0.00 in
 EndY: 0.00 in
 Area 10.11 in²
 Max stitch: 11.1 mm
 Min stitch: 0.0 mm
 Max jump: 6.9 mm
 Total thread: 187.54ft
 Total bobbin: 68.26ft

Stop Sequence:

#	N#	Color	St.	Code	Name	Chart
1.	3		6,747	3	Red	Default
2.	1		733		R235 G40 B56	
3.	9		877	9	White	Default
4.	11		2,468	11	Dark Red	Default



Production Worksheet

Wilcom EmbroideryStudio - Designing



Design: **4**

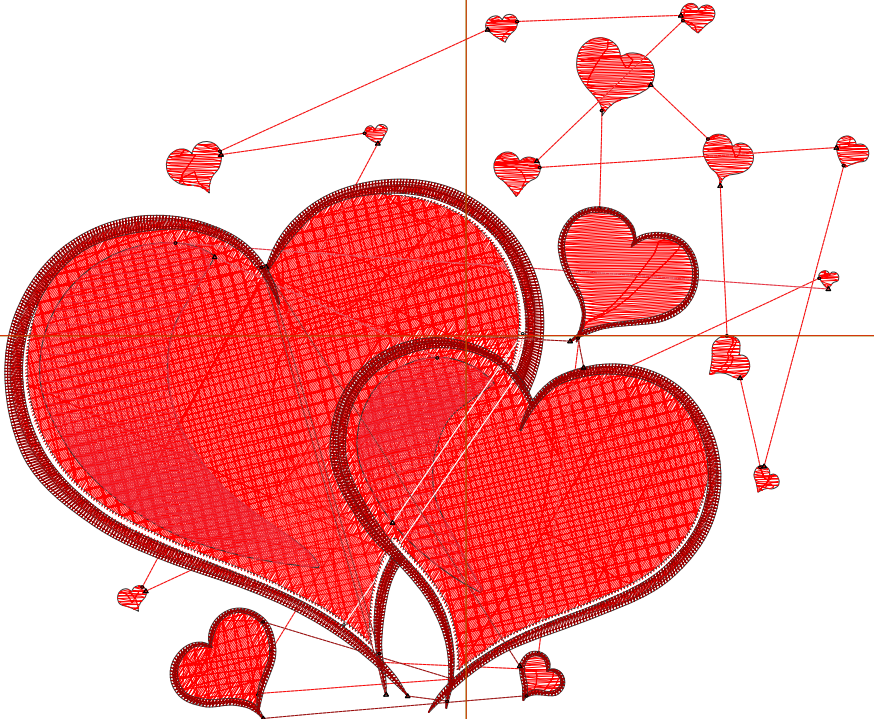
Title:

Stitches: 15,852
 Height: 3.72 in
 Width: 4.50 in
 Colors: 4
 Colorway: Colorway 1
 Zoom: 1:1

Machine format: Tajima
 Color changes: 3
 Stops: 4
 Trims: 27
 Appliqués: 0
 Left: 61.0 mm
 Right: 53.2 mm
 Up: 43.9 mm
 Down: 50.7 mm
 EndX: 0.00 in
 EndY: 0.00 in
 Area 16.75 in²
 Max stitch: 11.7 mm
 Min stitch: 0.0 mm
 Max jump: 7.0 mm
 Total thread: 292.16ft
 Total bobbin: 110.72ft

Stop Sequence:

#	N#	Color	St.	Code	Name	Chart
1.	3		10,488	3	Red	Default
2.	1		1,083		R235 G40 B56	
3.	9		1,134	9	White	Default
4.	11		3,145	11	Dark Red	Default



Production Worksheet

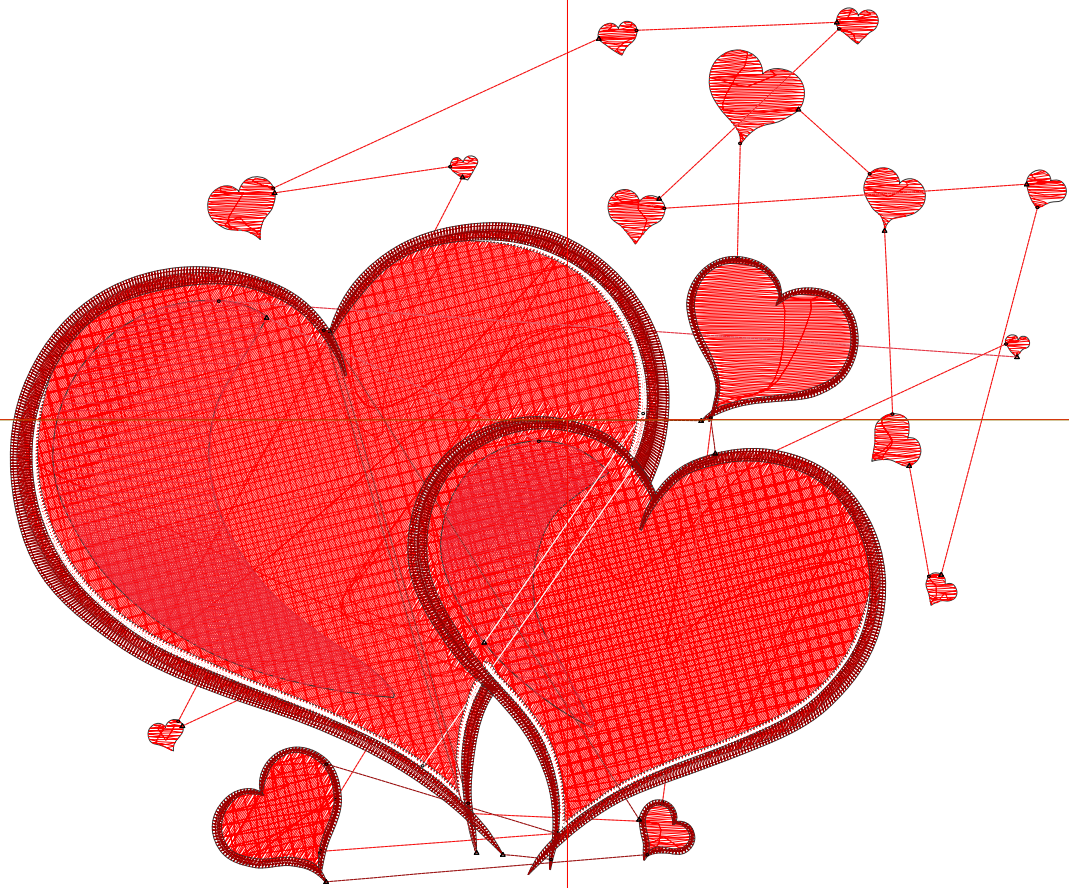
Wilcom EmbroideryStudio - Designing



Design: **5**

Title:

Stitches: 21,766
Height: 4.55 in
Width: 5.50 in
Colors: 4
Colorway: Colorway 1
Zoom: 1:1



Production Worksheet

Wilcom EmbroideryStudio - Designing



Design: **5**

Title:

Stitches: 21,766
 Height: 4.55 in
 Width: 5.50 in
 Colors: 4
 Colorway: Colorway 1
 Zoom: 1:1

Machine format: Tajima
 Color changes: 3
 Stops: 4
 Trims: 27
 Appliqués: 0
 Left: 73.7 mm
 Right: 65.9 mm
 Up: 54.3 mm
 Down: 61.2 mm
 EndX: 0.00 in
 EndY: 0.00 in
 Area 24.99 in²
 Max stitch: 9.1 mm
 Min stitch: 0.0 mm
 Max jump: 7.0 mm
 Total thread: 419.88ft
 Total bobbin: 163.41ft

Stop Sequence:

#	N#	Color	St.	Code	Name	Chart
1.	3		14,975	3	Red	Default
2.	1		1,517		R235 G40 B56	
3.	9		1,397	9	White	Default
4.	11		3,875	11	Dark Red	Default

Production Worksheet

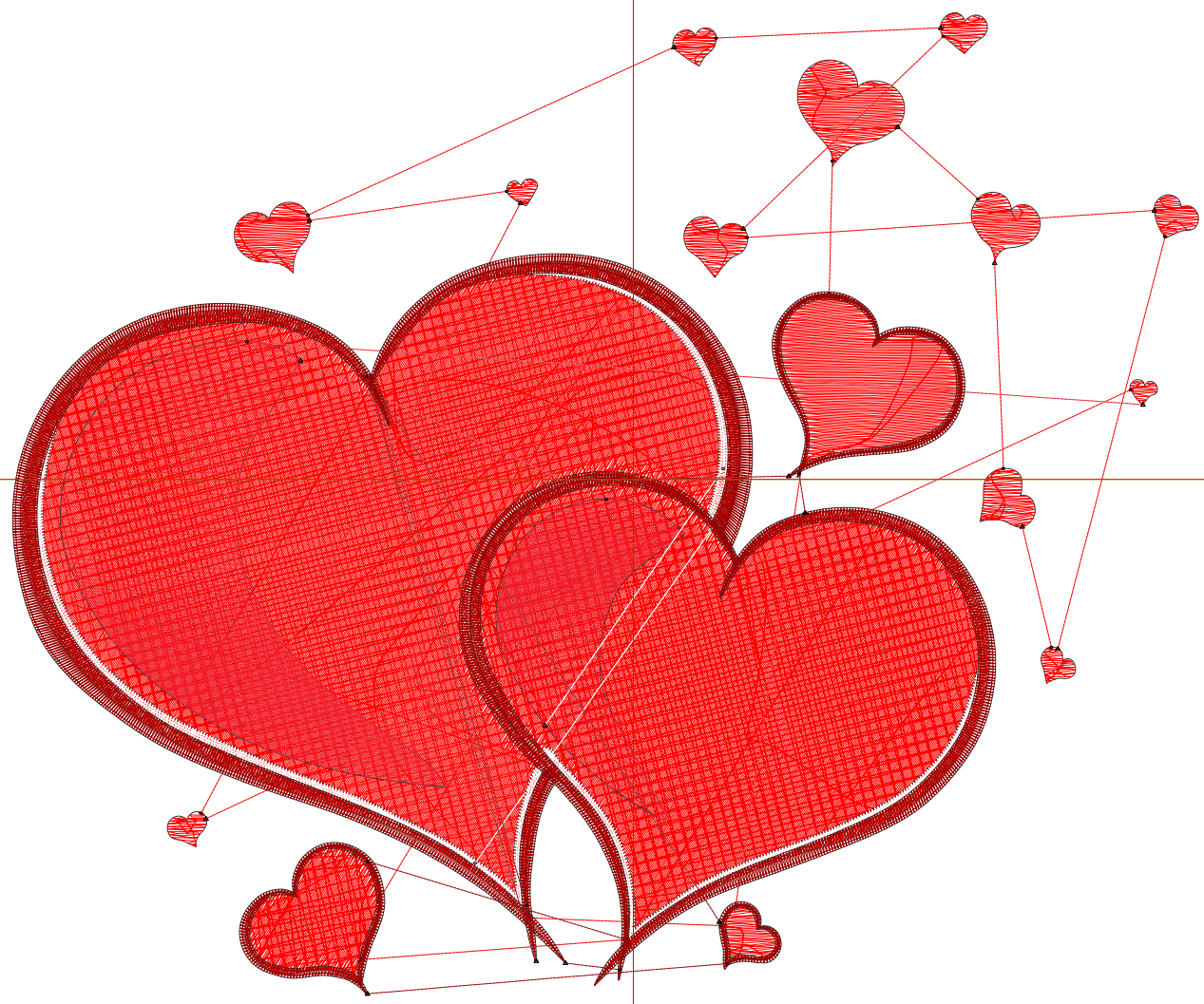
Wilcom EmbroideryStudio - Designing



Design: **6**

Title:

Stitches: 28,552
Height: 5.38 in
Width: 6.50 in
Colors: 4
Colorway: Colorway 1
Zoom: 1:1



Production Worksheet

Wilcom EmbroideryStudio - Designing



Design: **6**

Title:

Stitches: 28,552
 Height: 5.38 in
 Width: 6.50 in
 Colors: 4
 Colorway: Colorway 1
 Zoom: 1:1

Machine format: Tajima
 Color changes: 3
 Stops: 4
 Trims: 27
 Appliqués: 0
 Left: 86.4 mm
 Right: 78.6 mm
 Up: 64.9 mm
 Down: 71.7 mm
 EndX: 0.00 in
 EndY: 0.00 in
 Area 34.94 in²
 Max stitch: 12.1 mm
 Min stitch: 0.0 mm
 Max jump: 7.0 mm
 Total thread: 570.65ft
 Total bobbin: 226.37ft

Stop Sequence:

#	N#	Color	St.	Code	Name	Chart
1.	3		20,269	3	Red	Default
2.	1		2,006		R235 G40 B56	
3.	9		1,653	9	White	Default
4.	11		4,622	11	Dark Red	Default

Production Worksheet

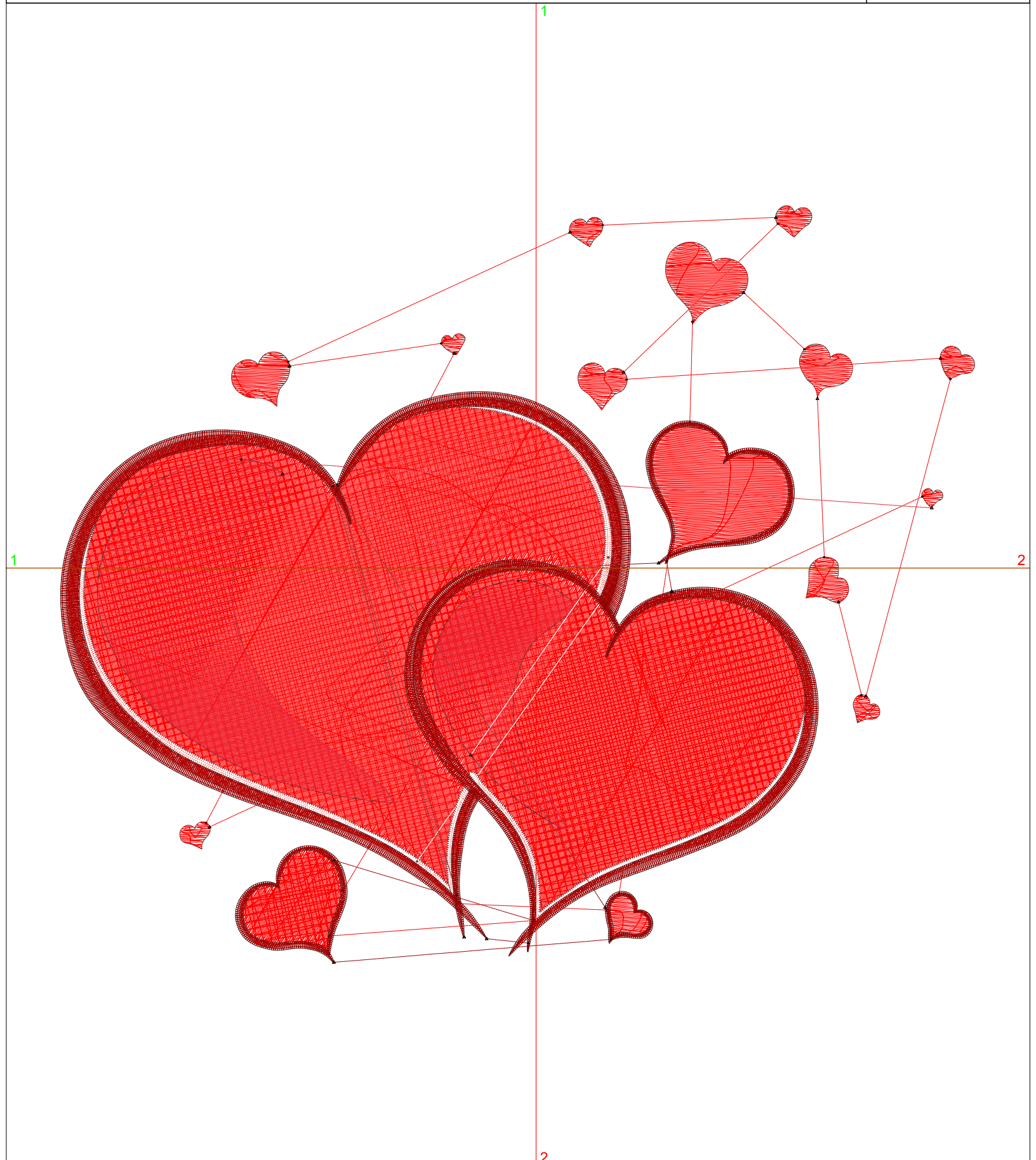
Wilcom EmbroideryStudio - Designing



Design: **7**

Title:

Stitches: 36,313
Height: 6.21 in
Width: 7.50 in
Colors: 4
Colorway: Colorway 1
Zoom: 1:1



Production Worksheet

Wilcom EmbroideryStudio - Designing



Design: **7**

Title:

Stitches: 36,313
 Height: 6.21 in
 Width: 7.50 in
 Colors: 4
 Colorway: Colorway 1
 Zoom: 1:1

Machine format: Tajima
 Color changes: 3
 Stops: 4
 Trims: 27
 Appliqués: 0
 Left: 99.1 mm
 Right: 91.3 mm
 Up: 75.5 mm
 Down: 82.2 mm
 EndX: 0.00 in
 EndY: 0.00 in
 Area 46.54 in²
 Max stitch: 10.2 mm
 Min stitch: 0.1 mm
 Max jump: 7.0 mm
 Total thread: 746.12ft
 Total bobbin: 300.17ft

Stop Sequence:

#	N#	Color	St.	Code	Name	Chart
1.	3		26,429	3	Red	Default
2.	1		2,565		R235 G40 B56	
3.	9		1,922	9	White	Default
4.	11		5,395	11	Dark Red	Default