

# Production Worksheet

Wilcom EmbroideryStudio - Designing



Design: **3**

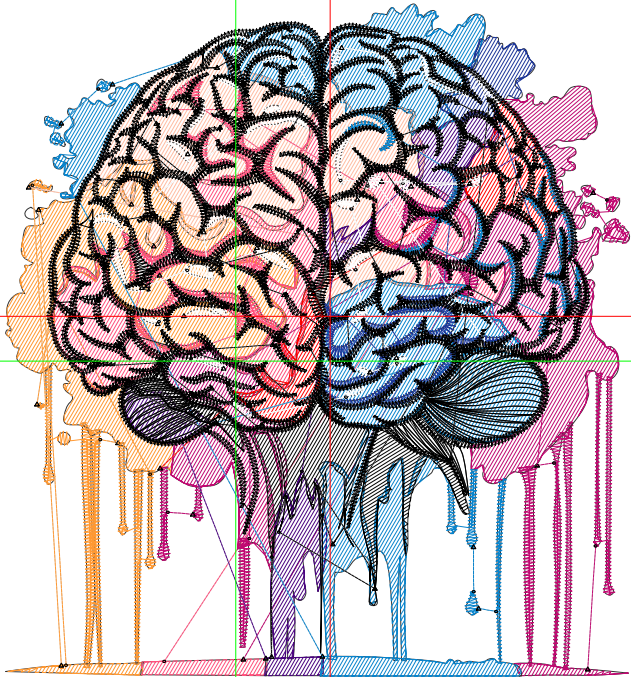
Title:

Stitches: 22,354  
 Height: 3.50 in  
 Width: 3.25 in  
 Colors: 10  
 Colorway: Colorway 1  
 Zoom: 1:1

Machine format: Tajima  
 Color changes: 9  
 Stops: 10  
 Trims: 135  
 Appliqués: 0  
 Left: 30.3 mm  
 Right: 52.1 mm  
 Up: 47.2 mm  
 Down: 41.7 mm  
 EndX: 0.49 in  
 EndY: 0.23 in  
 Area: 11.35 in<sup>2</sup>  
 Max stitch: 10.7 mm  
 Min stitch: 0.0 mm  
 Max jump: 6.9 mm  
 Total thread: 275.79ft  
 Total bobbin: 74.56ft

Stop Sequence:

#	N#	Color	St.	Code	Name	Chart
1.	12		1,902	12	Orange	Default
2.	16		936		R255 G189 B163	
3.	15		1,931		R255 G81 B125	
4.	6		2,503		R192 G9 B113	
5.	3		386		R255 G0 B0	
6.	13		591		R74 G3 B128	
7.	5		2,678		R9 G132 B204	
8.	10		689		R29 G54 B153	
9.	9		1,019		R255 G255 B255	
10.	8		9,717		R0 G0 B0	



# Production Worksheet

Wilcom EmbroideryStudio - Designing



Design: **4**

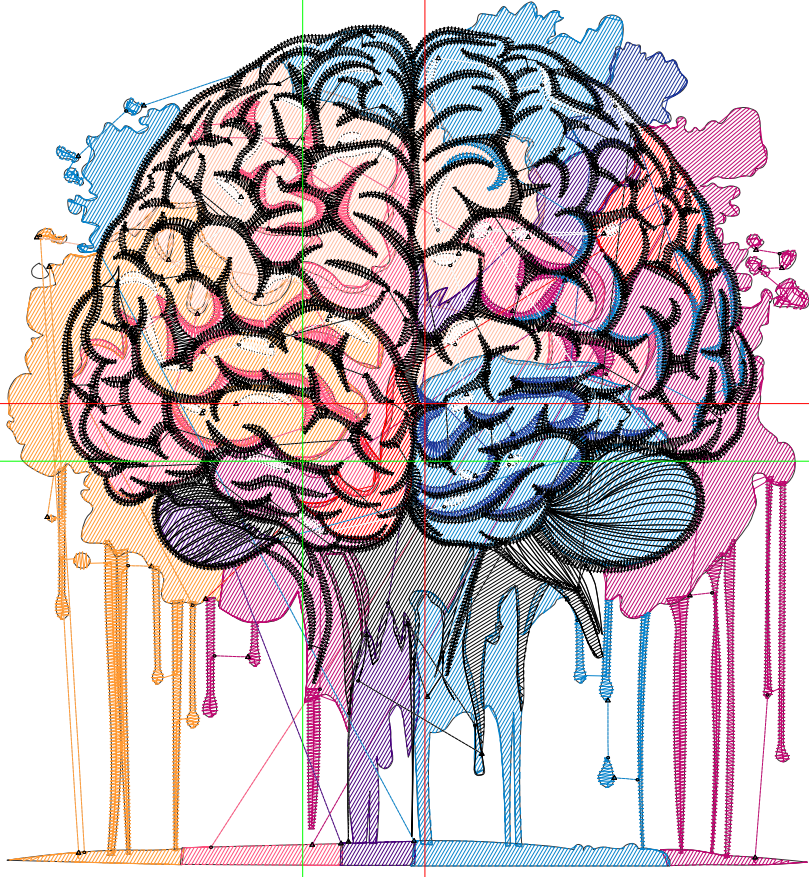
Title:

Stitches: 29,105  
 Height: 4.50 in  
 Width: 4.17 in  
 Colors: 10  
 Colorway: Colorway 1  
 Zoom: 1:1

Machine format: Tajima  
 Color changes: 9  
 Stops: 10  
 Trims: 151  
 Appliqués: 0  
 Left: 39.1 mm  
 Right: 67.0 mm  
 Up: 60.7 mm  
 Down: 53.6 mm  
 EndX: 0.64 in  
 EndY: 0.30 in  
 Area: 18.78 in<sup>2</sup>  
 Max stitch: 7.0 mm  
 Min stitch: 0.0 mm  
 Max jump: 7.0 mm  
 Total thread: 383.86ft  
 Total bobbin: 112.36ft

Stop Sequence:

#	N#	Color	St.	Code	Name	Chart
1.	12		2,564	12	Orange	Default
2.	16		1,355		R255 G189 B163	
3.	15		2,566		R255 G81 B125	
4.	6		3,349		R192 G9 B113	
5.	3		545		R255 G0 B0	
6.	13		788		R74 G3 B128	
7.	5		3,613		R9 G132 B204	
8.	10		907		R29 G54 B153	
9.	9		1,220		R255 G255 B255	
10.	8		12,196		R0 G0 B0	



# Production Worksheet

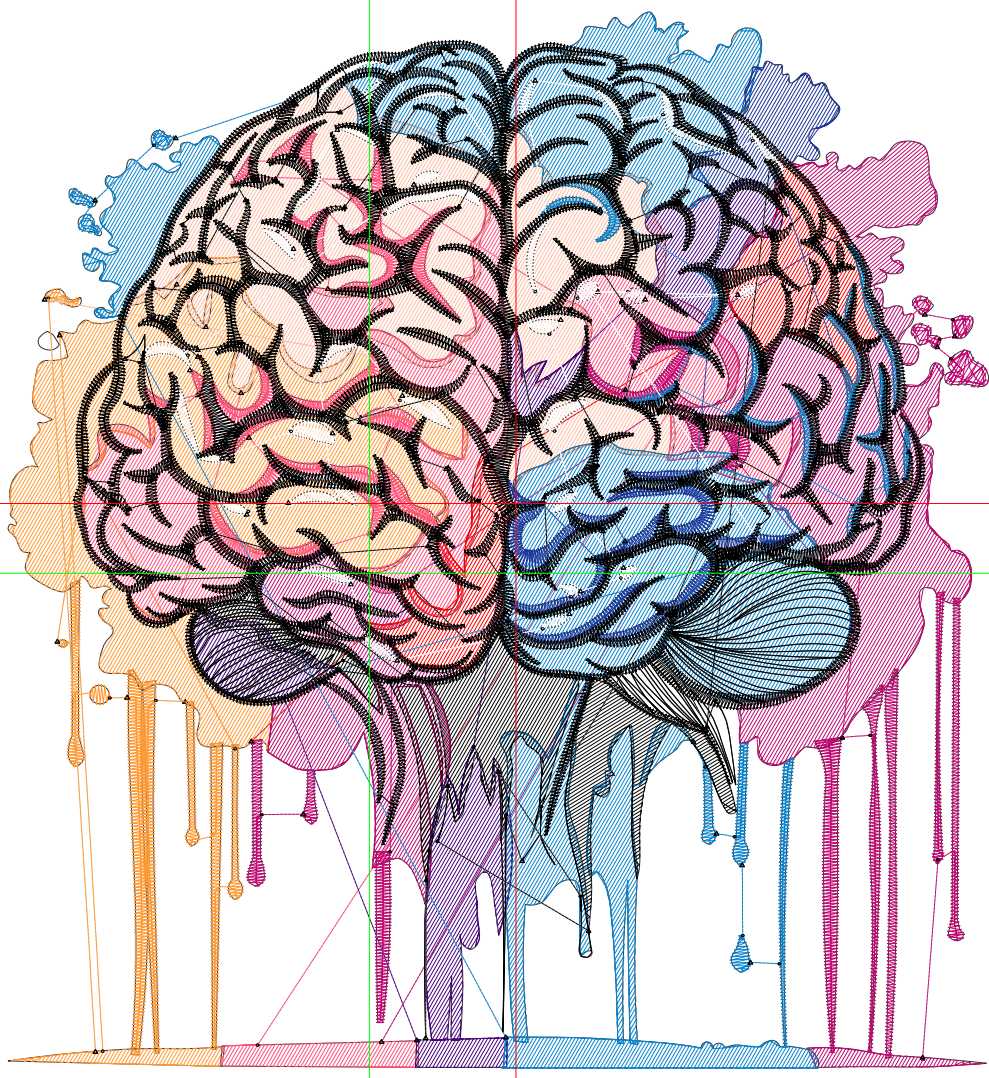
Wilcom EmbroideryStudio - Designing



Design: **5**

Title:

Stitches: 36,603  
Height: 5.50 in  
Width: 5.10 in  
Colors: 10  
Colorway: Colorway 1  
Zoom: 1:1



# Production Worksheet

Wilcom EmbroideryStudio - Designing



Design: **5**

Title:

Stitches: 36,603  
 Height: 5.50 in  
 Width: 5.10 in  
 Colors: 10  
 Colorway: Colorway 1  
 Zoom: 1:1

Machine format: Tajima  
 Color changes: 9  
 Stops: 10  
 Trims: 166  
 Appliqués: 0  
 Left: 47.7 mm  
 Right: 81.8 mm  
 Up: 74.2 mm  
 Down: 65.5 mm  
 EndX: 0.76 in  
 EndY: 0.36 in  
 Area 28.03 in<sup>2</sup>  
 Max stitch: 6.8 mm  
 Min stitch: 0.0 mm  
 Max jump: 6.9 mm  
 Total thread: 512.95ft  
 Total bobbin: 159.70ft

Stop Sequence:

#	N#	Color	St.	Code	Name	Chart
1.	12		3,318	12	Orange	Default
2.	16		1,852		R255 G189 B163	
3.	15		3,258		R255 G81 B125	
4.	6		4,299		R192 G9 B113	
5.	3		712		R255 G0 B0	
6.	13		1,078		R74 G3 B128	
7.	5		4,748		R9 G132 B204	
8.	10		1,110		R29 G54 B153	
9.	9		1,433		R255 G255 B255	
10.	8		14,793		R0 G0 B0	

# Production Worksheet

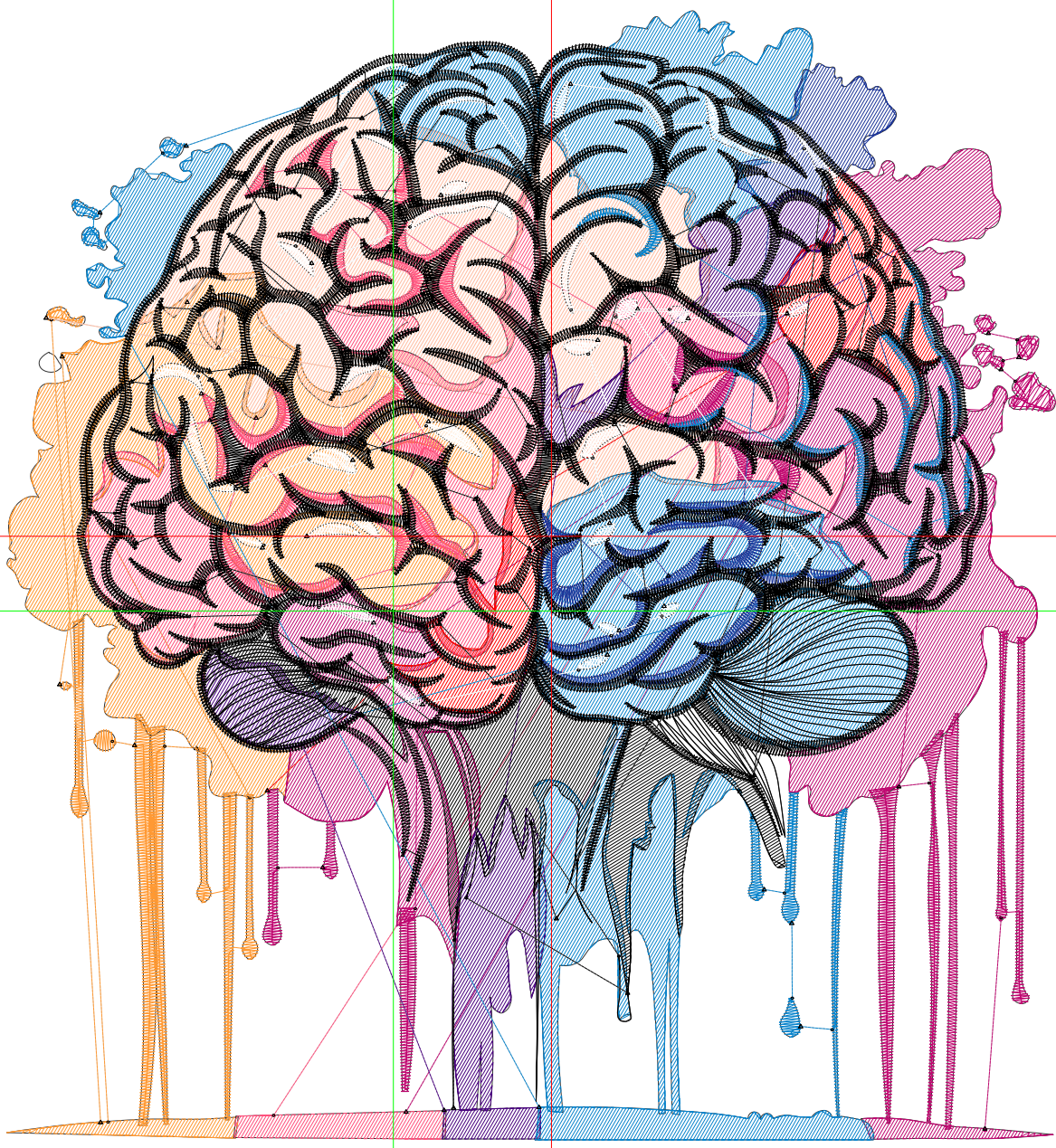
Wilcom EmbroideryStudio - Designing



Design: **6**

Title:

Stitches: 44,513  
Height: 6.50 in  
Width: 6.04 in  
Colors: 10  
Colorway: Colorway 1  
Zoom: 1:1



# Production Worksheet

Wilcom EmbroideryStudio - Designing



Design: **6**

Title:

Stitches: 44,513  
 Height: 6.50 in  
 Width: 6.04 in  
 Colors: 10  
 Colorway: Colorway 1  
 Zoom: 1:1

Machine format: Tajima  
 Color changes: 9  
 Stops: 10  
 Trims: 173  
 Appliqués: 0  
 Left: 56.5 mm  
 Right: 96.9 mm  
 Up: 87.7 mm  
 Down: 77.4 mm  
 EndX: 0.91 in  
 EndY: 0.43 in  
 Area 39.23 in<sup>2</sup>  
 Max stitch: 7.0 mm  
 Min stitch: 0.0 mm  
 Max jump: 7.0 mm  
 Total thread: 658.16ft  
 Total bobbin: 214.99ft

Stop Sequence:

#	N#	Color	St.	Code	Name	Chart
1.	12		4,180	12	Orange	Default
2.	16		2,401		R255 G189 B163	
3.	15		3,946		R255 G81 B125	
4.	6		5,277		R192 G9 B113	
5.	3		920		R255 G0 B0	
6.	13		1,362		R74 G3 B128	
7.	5		5,995		R9 G132 B204	
8.	10		1,328		R29 G54 B153	
9.	9		1,646		R255 G255 B255	
10.	8		17,456		R0 G0 B0	

# Production Worksheet

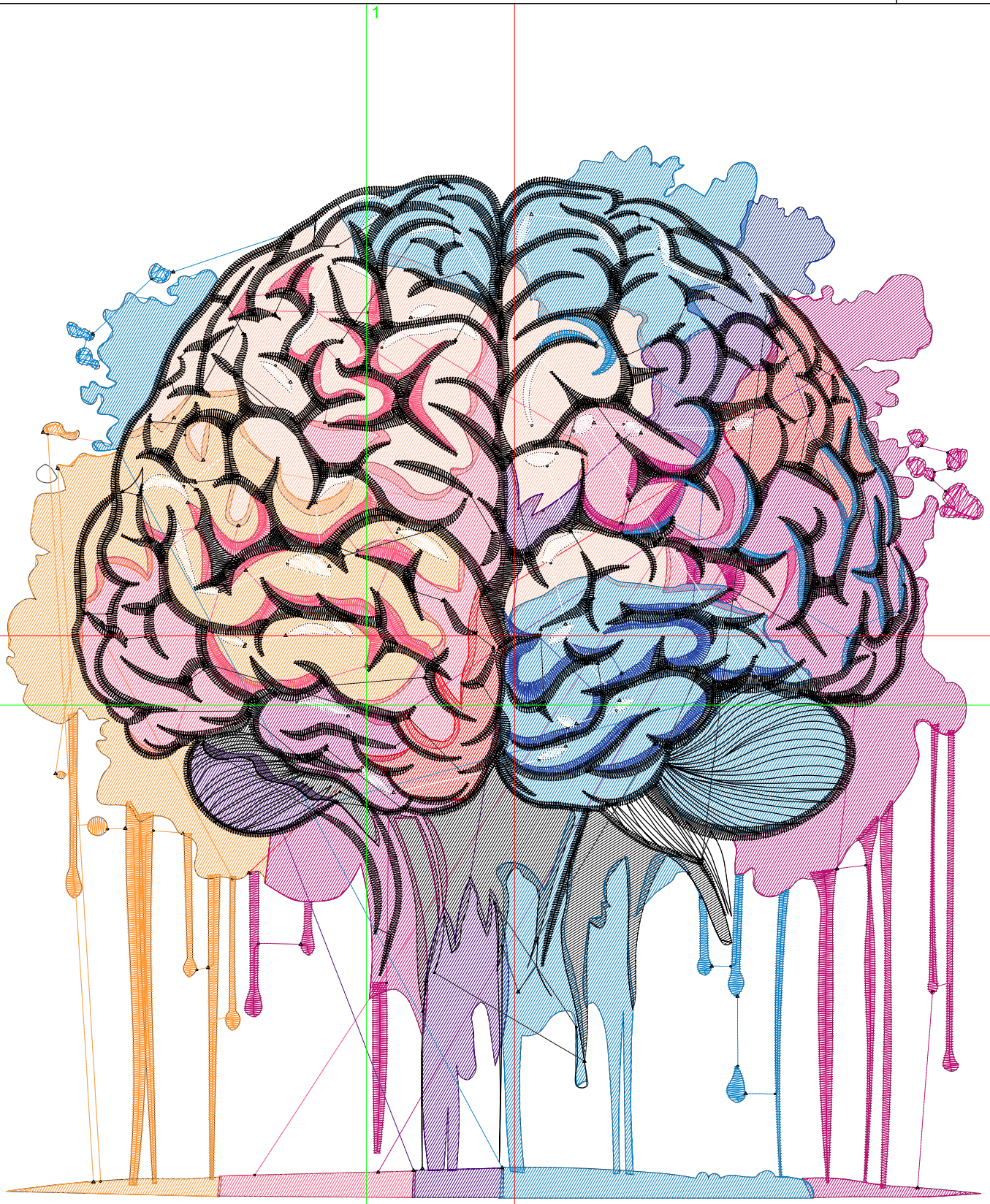
Wilcom EmbroideryStudio - Designing



Design: **7**

Title:

Stitches: 52,847  
Height: 7.50 in  
Width: 6.97 in  
Colors: 10  
Colorway: Colorway 1  
Zoom: 1:1



# Production Worksheet

Wilcom EmbroideryStudio - Designing



Design: **7**

Title:

Stitches: 52,847  
 Height: 7.50 in  
 Width: 6.97 in  
 Colors: 10  
 Colorway: Colorway 1  
 Zoom: 1:1

Machine format: Tajima  
 Color changes: 9  
 Stops: 10  
 Trims: 179  
 Appliqués: 0  
 Left: 65.2 mm  
 Right: 111.7 mm  
 Up: 101.2 mm  
 Down: 89.3 mm  
 EndX: 1.06 in  
 EndY: 0.49 in  
 Area 52.24 in<sup>2</sup>  
 Max stitch: 7.0 mm  
 Min stitch: 0.0 mm  
 Max jump: 7.0 mm  
 Total thread: 819.49ft  
 Total bobbin: 278.19ft

Stop Sequence:

#	N#	Color	St.	Code	Name	Chart
1.	12		5,053	12	Orange	Default
2.	16		3,006		R255 G189 B163	
3.	15		4,756		R255 G81 B125	
4.	6		6,377		R192 G9 B113	
5.	3		1,129		R255 G0 B0	
6.	13		1,667		R74 G3 B128	
7.	5		7,284		R9 G132 B204	
8.	10		1,562		R29 G54 B153	
9.	9		1,857		R255 G255 B255	
10.	8		20,154		R0 G0 B0	