

Production Worksheet

Wilcom EmbroideryStudio - Designing



Design: **3**

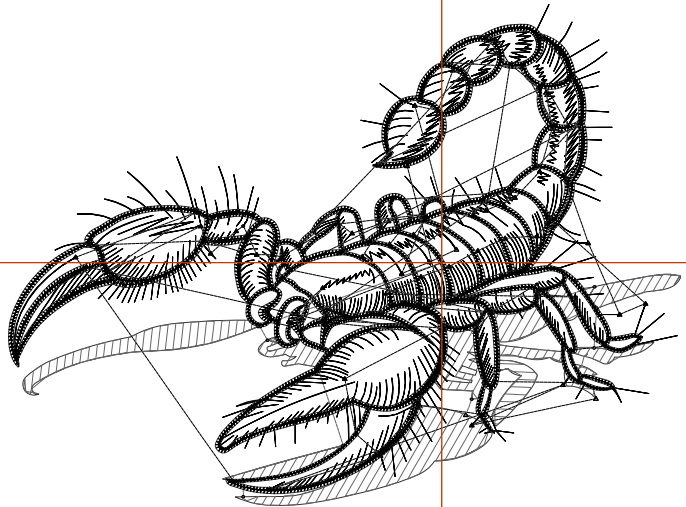
Title:

Stitches: 9,910
 Height: 2.61 in
 Width: 3.50 in
 Colors: 2
 Colorway: Colorway 1
 Zoom: 1:1

Machine format: Tajima
 Color changes: 1
 Stops: 2
 Trims: 92
 Appliqués: 0
 Left: 57.3 mm
 Right: 31.6 mm
 Up: 34.2 mm
 Down: 32.1 mm
 EndX: 0.00 in
 EndY: 0.00 in
 Area 9.13 in²
 Max stitch: 7.0 mm
 Min stitch: 0.0 mm
 Max jump: 7.0 mm
 Total thread: 111.19ft
 Total bobbin: 26.96ft

Stop Sequence:

#	N#	Color	St.	Code	Name	Chart
1.	18	Grey	18	571	Grey	Default
2.	8	Black	8	9,337	Black	Default



Production Worksheet

Wilcom EmbroideryStudio - Designing



Design: **4**

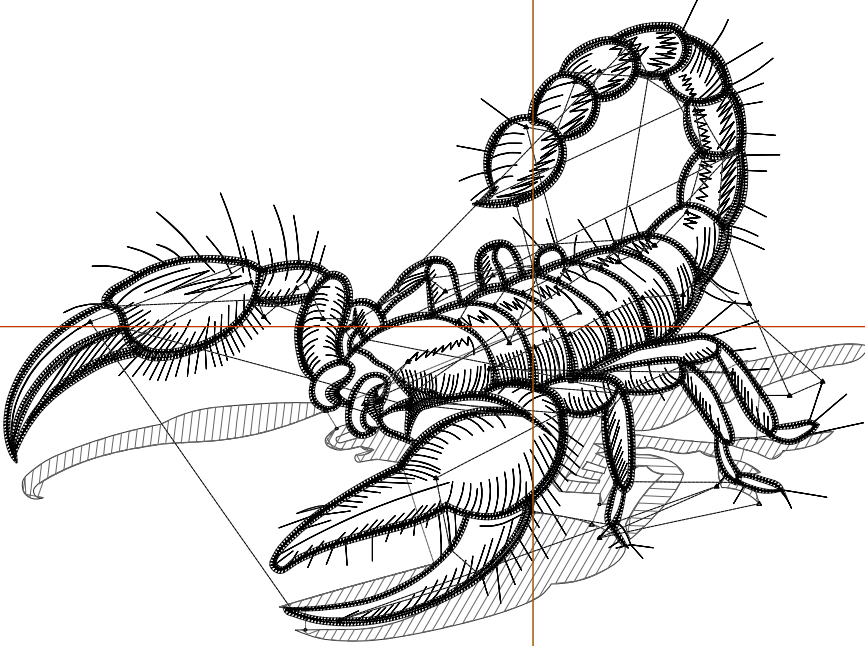
Title:

Stitches: 12,002
 Height: 3.35 in
 Width: 4.48 in
 Colors: 2
 Colorway: Colorway 1
 Zoom: 1:1

Machine format: Tajima
 Color changes: 1
 Stops: 2
 Trims: 95
 Appliqués: 0
 Left: 70.0 mm
 Right: 43.7 mm
 Up: 43.6 mm
 Down: 41.6 mm
 EndX: 0.00 in
 EndY: 0.00 in
 Area 15.02 in²
 Max stitch: 7.0 mm
 Min stitch: 0.0 mm
 Max jump: 7.0 mm
 Total thread: 143.10ft
 Total bobbin: 37.74ft

Stop Sequence:

#	N#	Color	St.	Code	Name	Chart
1.	18		747	18	Grey	Default
2.	8		11,253	8	Black	Default



Production Worksheet

Wilcom EmbroideryStudio - Designing



Design: **5**

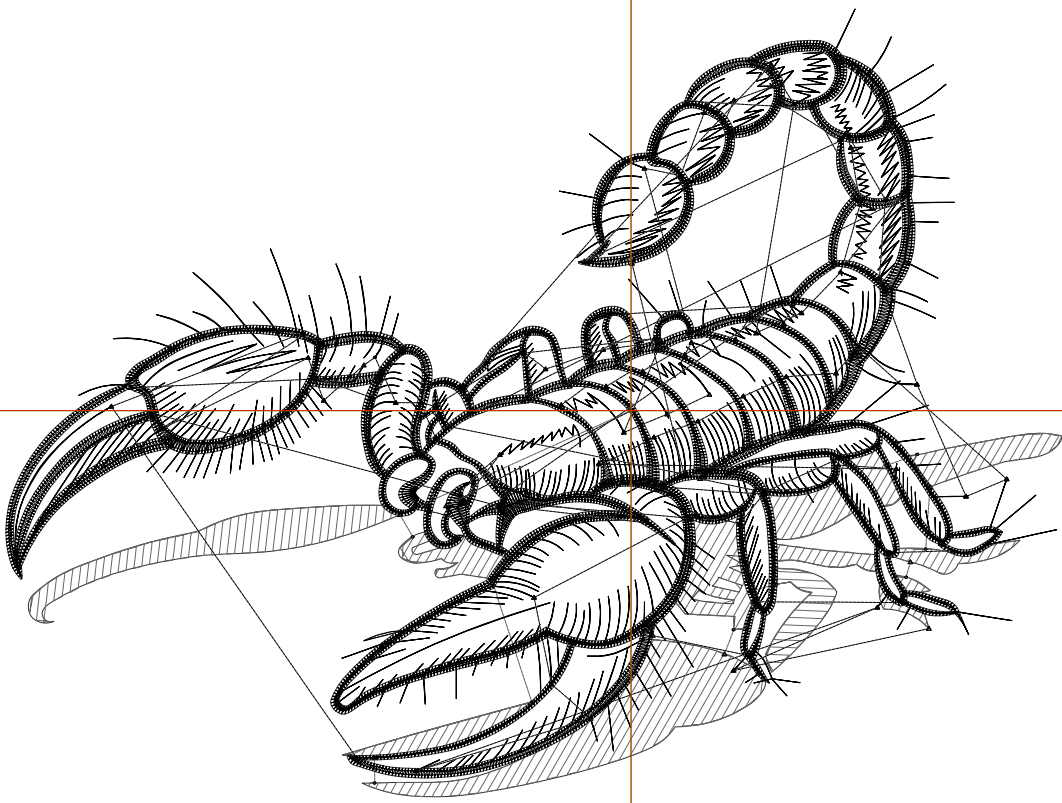
Title:

Stitches: 14,174
 Height: 4.10 in
 Width: 5.50 in
 Colors: 2
 Colorway: Colorway 1
 Zoom: 1:1

Machine format: Tajima
 Color changes: 1
 Stops: 2
 Trims: 100
 Appliqués: 0
 Left: 82.7 mm
 Right: 57.0 mm
 Up: 53.1 mm
 Down: 51.0 mm
 EndX: 0.00 in
 EndY: 0.00 in
 Area: 22.55 in²
 Max stitch: 6.8 mm
 Min stitch: 0.0 mm
 Max jump: 6.8 mm
 Total thread: 178.10ft
 Total bobbin: 50.04ft

Stop Sequence:

#	N#	Color	St.	Code	Name	Chart
1.	18		966	18	Grey	Default
2.	8		13,206	8	Black	Default



Production Worksheet

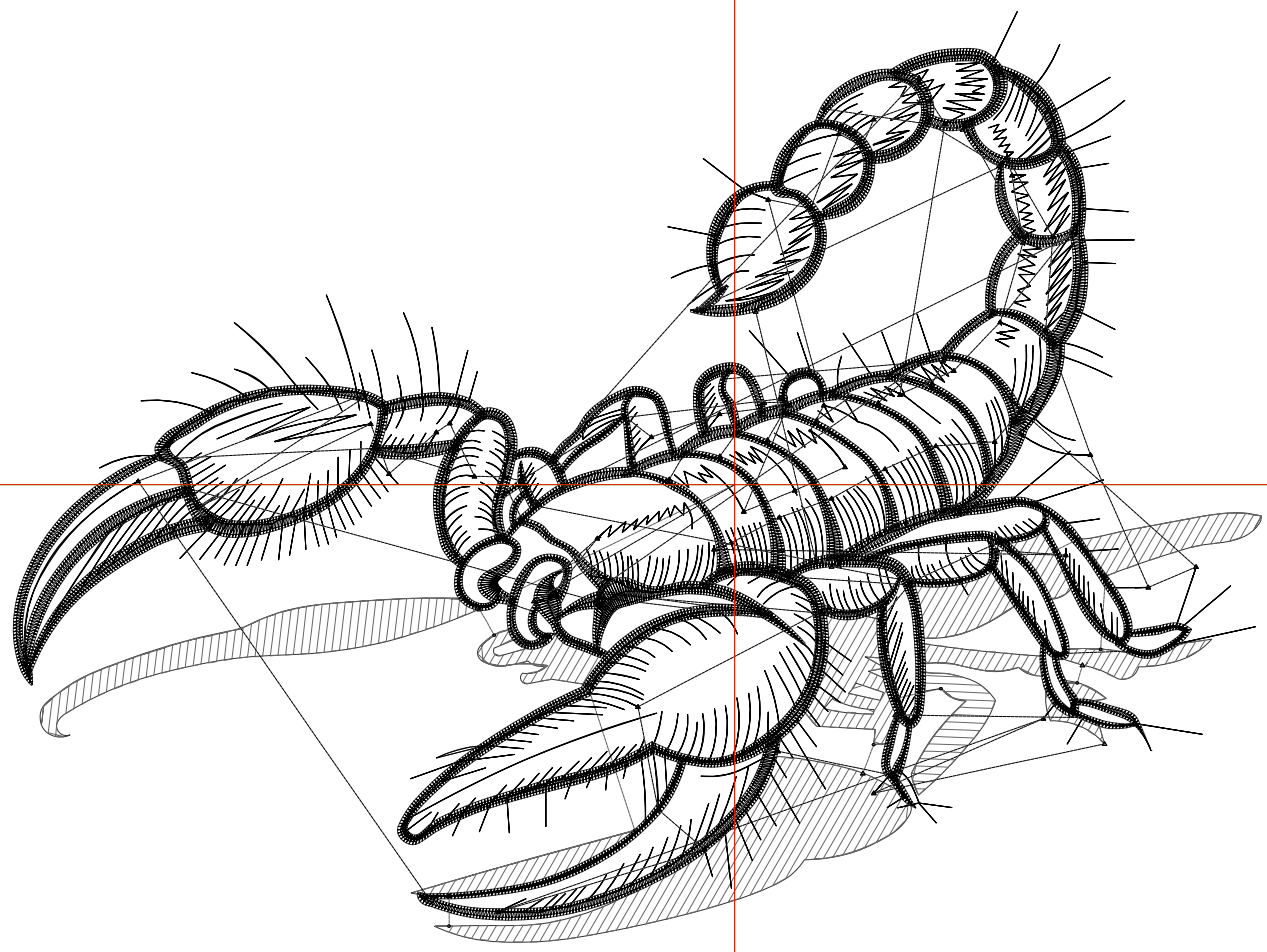
Wilcom EmbroideryStudio - Designing



Design: **6**

Title:

Stitches: 16,383
Height: 4.85 in
Width: 6.50 in
Colors: 2
Colorway: Colorway 1
Zoom: 1:1



Production Worksheet

Wilcom EmbroideryStudio - Designing



Design: **6**

Title:

Stitches: 16,383
 Height: 4.85 in
 Width: 6.50 in
 Colors: 2
 Colorway: Colorway 1
 Zoom: 1:1

Machine format: Tajima
 Color changes: 1
 Stops: 2
 Trims: 102
 Appliqués: 0
 Left: 95.4 mm
 Right: 69.7 mm
 Up: 62.6 mm
 Down: 60.5 mm
 EndX: 0.00 in
 EndY: 0.00 in
 Area 31.50 in²
 Max stitch: 6.9 mm
 Min stitch: 0.0 mm
 Max jump: 6.9 mm
 Total thread: 216.22ft
 Total bobbin: 64.04ft

Stop Sequence:

#	N#	Color	St.	Code	Name	Chart
1.	18		1,180	18	Grey	Default
2.	8		15,201	8	Black	Default

Production Worksheet

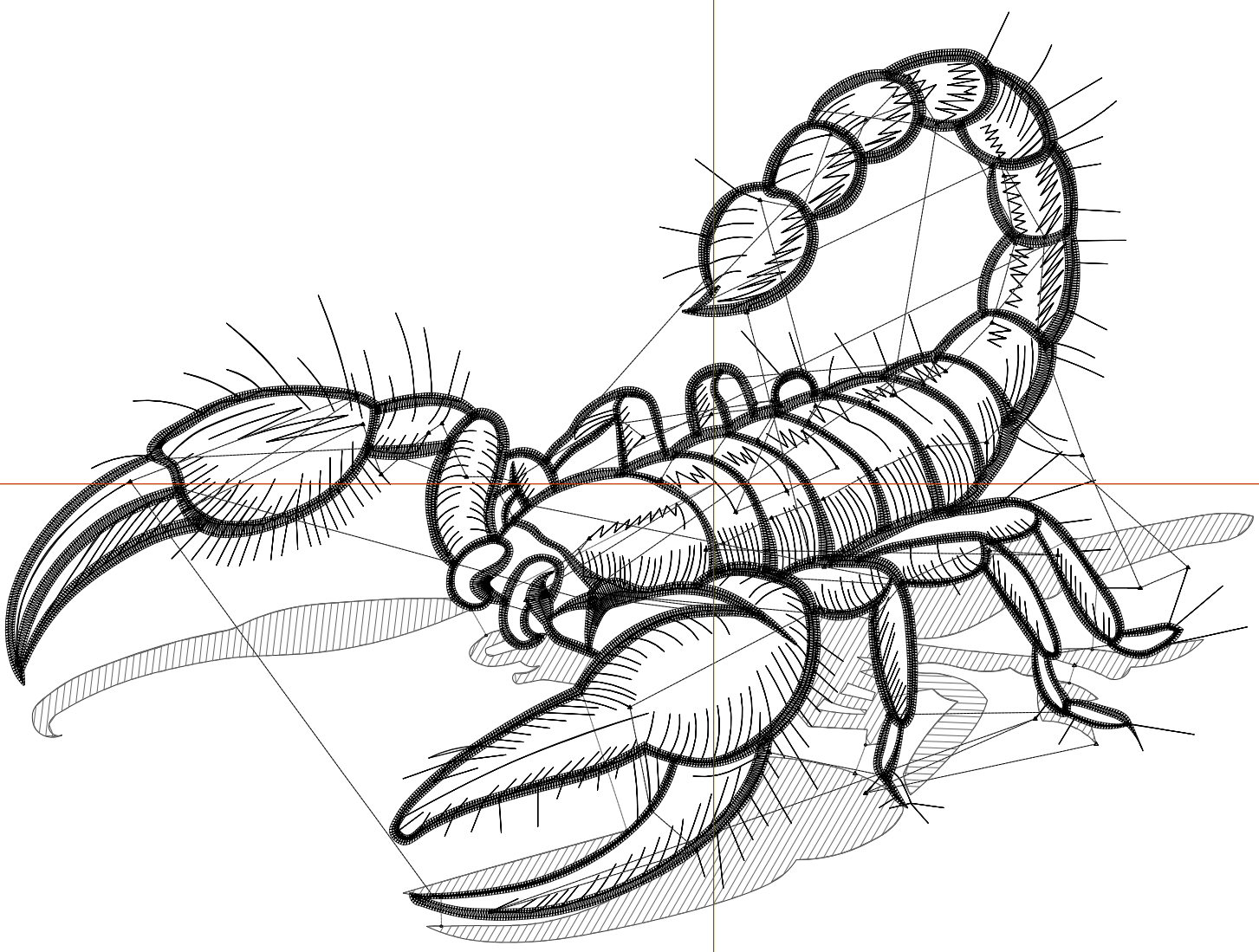
Wilcom EmbroideryStudio - Designing



Design: **7**

Title:

Stitches: 18,551
Height: 5.59 in
Width: 7.50 in
Colors: 2
Colorway: Colorway 1
Zoom: 1:1



Production Worksheet

Wilcom EmbroideryStudio - Designing



Design: **7**

Title:

Stitches: 18,551
 Height: 5.59 in
 Width: 7.50 in
 Colors: 2
 Colorway: Colorway 1
 Zoom: 1:1

Machine format: Tajima
 Color changes: 1
 Stops: 2
 Trims: 102
 Appliqués: 0
 Left: 108.1 mm
 Right: 82.4 mm
 Up: 72.0 mm
 Down: 70.0 mm
 EndX: 0.00 in
 EndY: 0.00 in
 Area 41.93 in²
 Max stitch: 7.0 mm
 Min stitch: 0.0 mm
 Max jump: 7.0 mm
 Total thread: 256.62ft
 Total bobbin: 79.55ft

Stop Sequence:

#	N#	Color	St.	Code	Name	Chart
1.	18		1,398	18	Grey	Default
2.	8		17,151	8	Black	Default