

# Production Worksheet

Wilcom EmbroideryStudio - Designing



Design: **3**

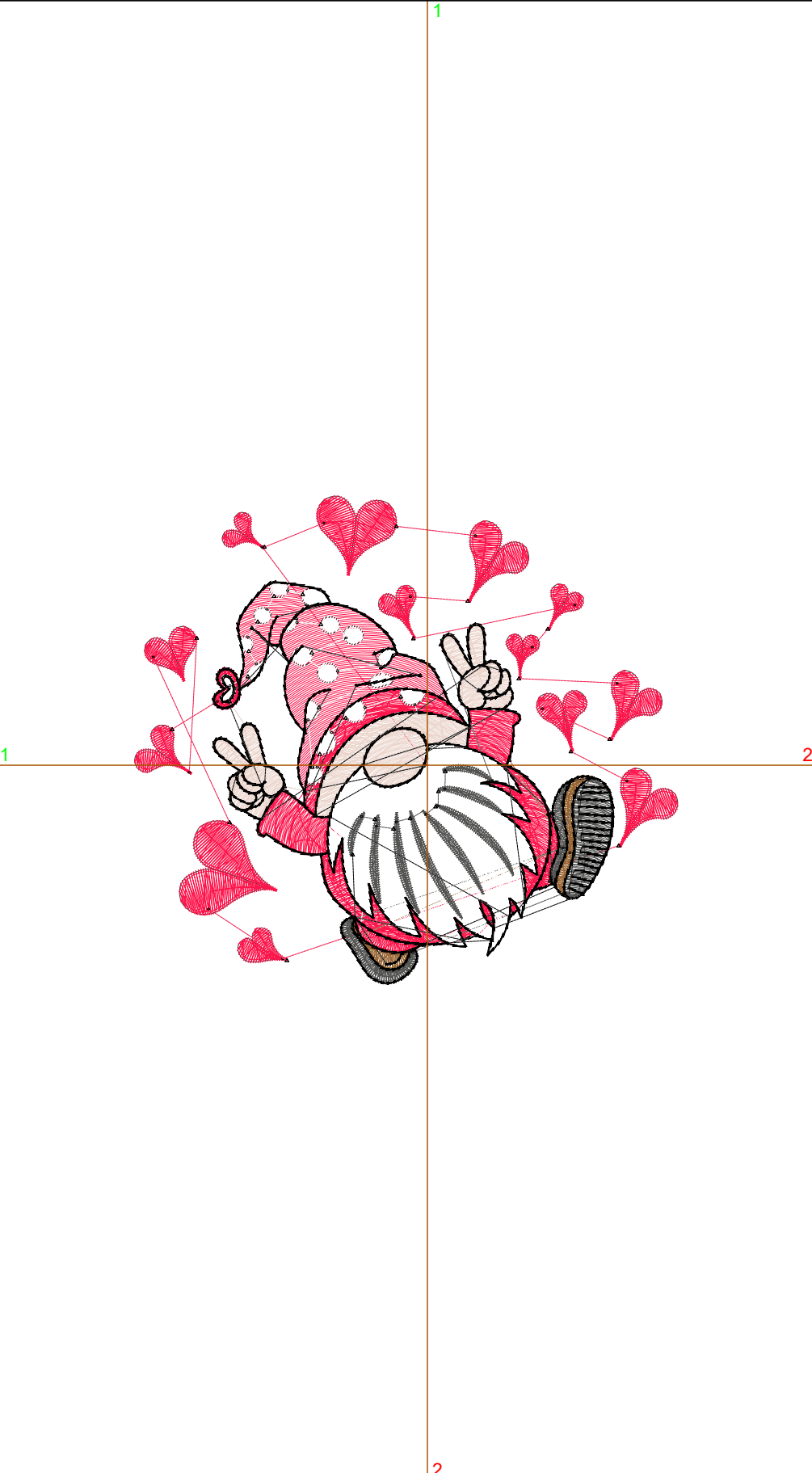
Title:

Stitches: 14,493  
 Height: 3.15 in  
 Width: 3.50 in  
 Colors: 6  
 Colorway: Colorway 1  
 Zoom: 1:1

Machine format: Tajima  
 Color changes: 6  
 Stops: 7  
 Trims: 87  
 Appliqués: 0  
 Left: 48.0 mm  
 Right: 41.0 mm  
 Up: 44.1 mm  
 Down: 35.9 mm  
 EndX: 0.00 in  
 EndY: 0.00 in  
 Area: 11.03 in<sup>2</sup>  
 Max stitch: 10.2 mm  
 Min stitch: 0.0 mm  
 Max jump: 6.9 mm  
 Total thread: 210.06ft  
 Total bobbin: 66.77ft

Stop Sequence:

#	N#	Color	St.	Code	Name	Chart
1.	2		5,937		R253 G22 B76	
2.	14		335		R153 G102 B51	
3.	3		748		R84 G84 B83	
4.	9		2,227		R255 G255 B255	
5.	1		1,579		R235 G213 B204	
6.	3		953		R84 G84 B83	
7.	8		2,712	8	Black	Default



# Production Worksheet

Wilcom EmbroideryStudio - Designing



Design: **4**

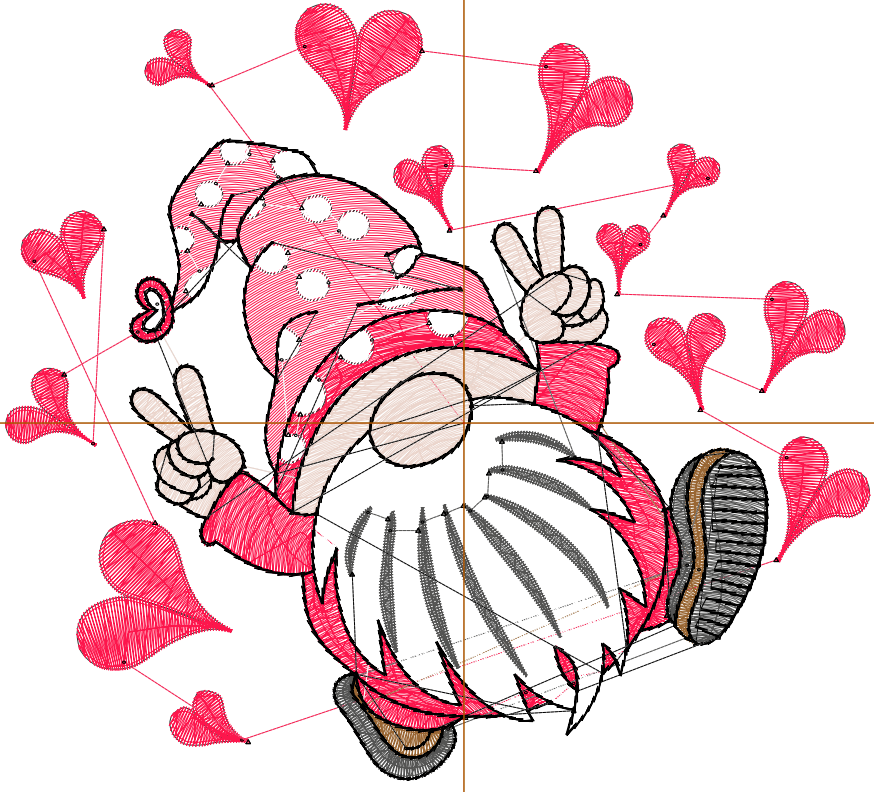
Title:

Stitches: 19,199  
 Height: 4.05 in  
 Width: 4.50 in  
 Colors: 6  
 Colorway: Colorway 1  
 Zoom: 1:1

Machine format: Tajima  
 Color changes: 6  
 Stops: 7  
 Trims: 90  
 Appliqués: 0  
 Left: 60.7 mm  
 Right: 53.7 mm  
 Up: 55.5 mm  
 Down: 47.3 mm  
 EndX: 0.00 in  
 EndY: 0.00 in  
 Area: 18.22 in<sup>2</sup>  
 Max stitch: 9.7 mm  
 Min stitch: 0.0 mm  
 Max jump: 6.9 mm  
 Total thread: 298.69ft  
 Total bobbin: 100.99ft

Stop Sequence:

#	N#	Color	St.	Code	Name	Chart
1.	2		7,933		R253 G22 B76	
2.	14		413		R153 G102 B51	
3.	3		1,023		R84 G84 B83	
4.	9		3,144		R255 G255 B255	
5.	1		2,260		R235 G213 B204	
6.	3		1,188		R84 G84 B83	
7.	8		3,236	8	Black	Default



# Production Worksheet

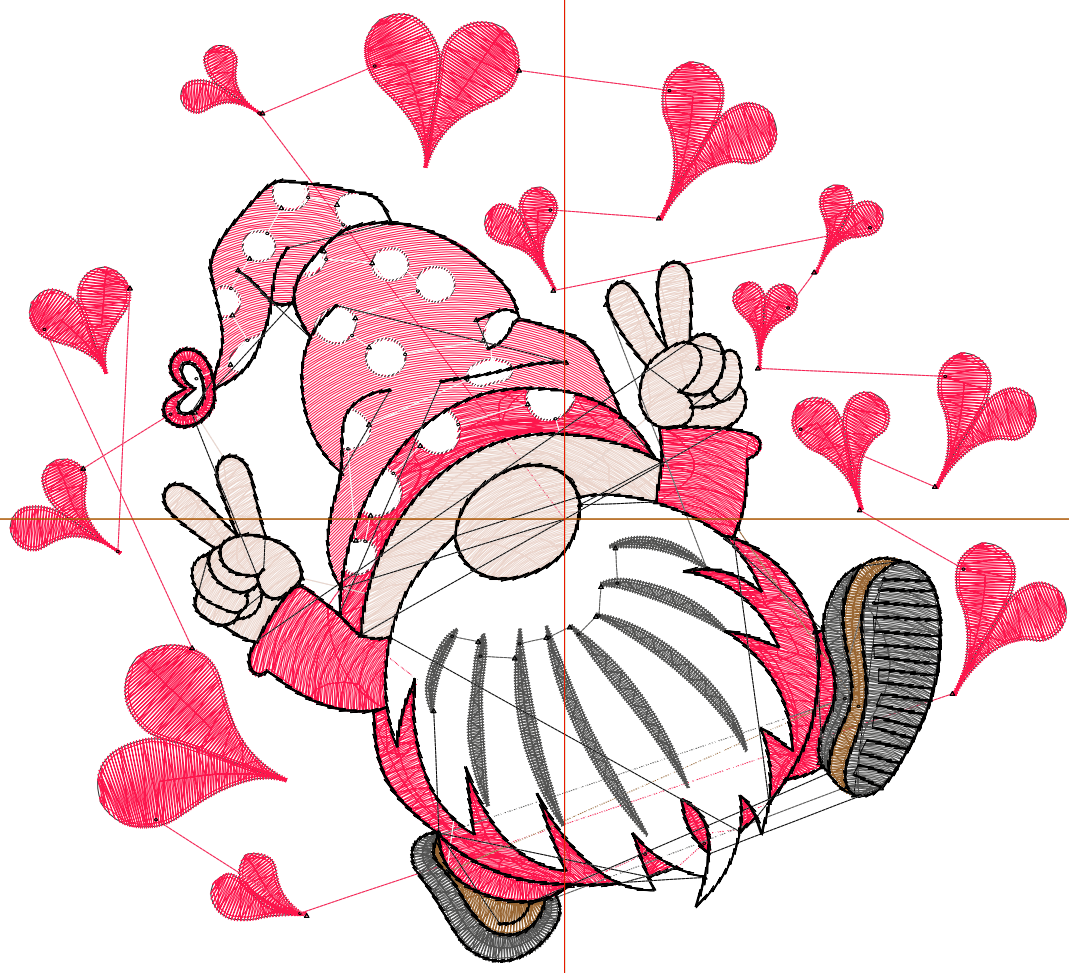
Wilcom EmbroideryStudio - Designing



Design: **5**

Title:

Stitches: 24,160  
Height: 4.94 in  
Width: 5.50 in  
Colors: 6  
Colorway: Colorway 1  
Zoom: 1:1



# Production Worksheet

Wilcom EmbroideryStudio - Designing



Design: **5**

Title:

Stitches: 24,160  
 Height: 4.94 in  
 Width: 5.50 in  
 Colors: 6  
 Colorway: Colorway 1  
 Zoom: 1:1

Machine format: Tajima  
 Color changes: 6  
 Stops: 7  
 Trims: 92  
 Appliqués: 0  
 Left: 73.4 mm  
 Right: 66.4 mm  
 Up: 66.9 mm  
 Down: 58.7 mm  
 EndX: 0.00 in  
 EndY: 0.00 in  
 Area 27.21 in<sup>2</sup>  
 Max stitch: 11.7 mm  
 Min stitch: 0.0 mm  
 Max jump: 7.0 mm  
 Total thread: 398.28ft  
 Total bobbin: 140.71ft

Stop Sequence:

#	N#	Color	St.	Code	Name	Chart
1.	2		10,098		R253 G22 B76	
2.	14		492		R153 G102 B51	
3.	3		1,328		R84 G84 B83	
4.	9		4,019		R255 G255 B255	
5.	1		3,038		R235 G213 B204	
6.	3		1,427		R84 G84 B83	
7.	8		3,756	8	Black	Default

# Production Worksheet

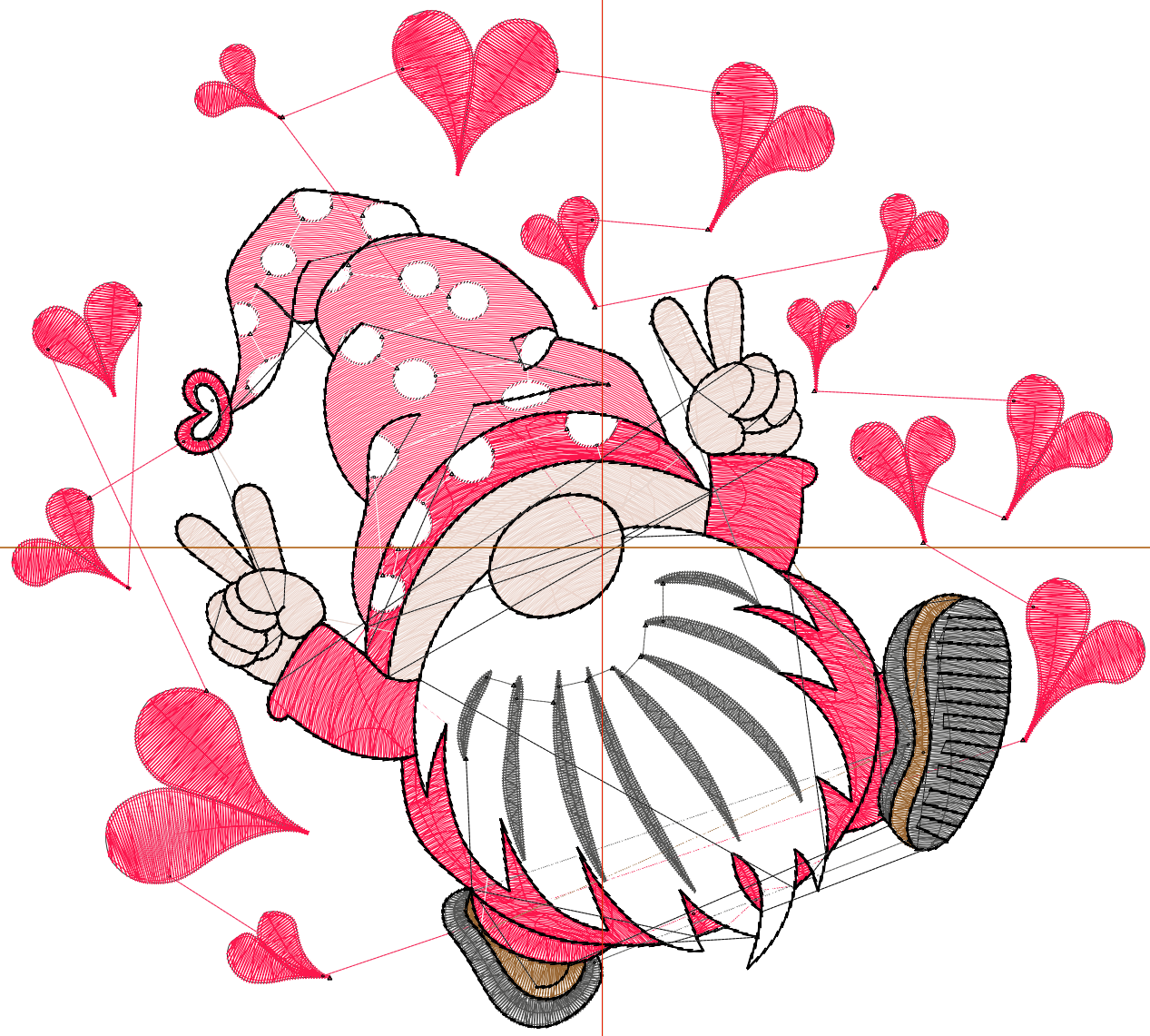
Wilcom EmbroideryStudio - Designing



Design: **6**

Title:

Stitches: 29,786  
Height: 5.84 in  
Width: 6.50 in  
Colors: 6  
Colorway: Colorway 1  
Zoom: 1:1



# Production Worksheet

Wilcom EmbroideryStudio - Designing



Design: **6**

Title:

Stitches: 29,786  
 Height: 5.84 in  
 Width: 6.50 in  
 Colors: 6  
 Colorway: Colorway 1  
 Zoom: 1:1

Machine format: Tajima  
 Color changes: 6  
 Stops: 7  
 Trims: 97  
 Appliqués: 0  
 Left: 86.1 mm  
 Right: 79.1 mm  
 Up: 78.3 mm  
 Down: 70.1 mm  
 EndX: 0.00 in  
 EndY: 0.00 in  
 Area 37.98 in<sup>2</sup>  
 Max stitch: 12.0 mm  
 Min stitch: 0.0 mm  
 Max jump: 7.0 mm  
 Total thread: 514.24ft  
 Total bobbin: 187.55ft

Stop Sequence:

#	N#	Color	St.	Code	Name	Chart
1.	2		12,486		R253 G22 B76	
2.	14		577		R153 G102 B51	
3.	3		1,692		R84 G84 B83	
4.	9		5,065		R255 G255 B255	
5.	1		3,968		R235 G213 B204	
6.	3		1,690		R84 G84 B83	
7.	8		4,306	8	Black	Default

# Production Worksheet

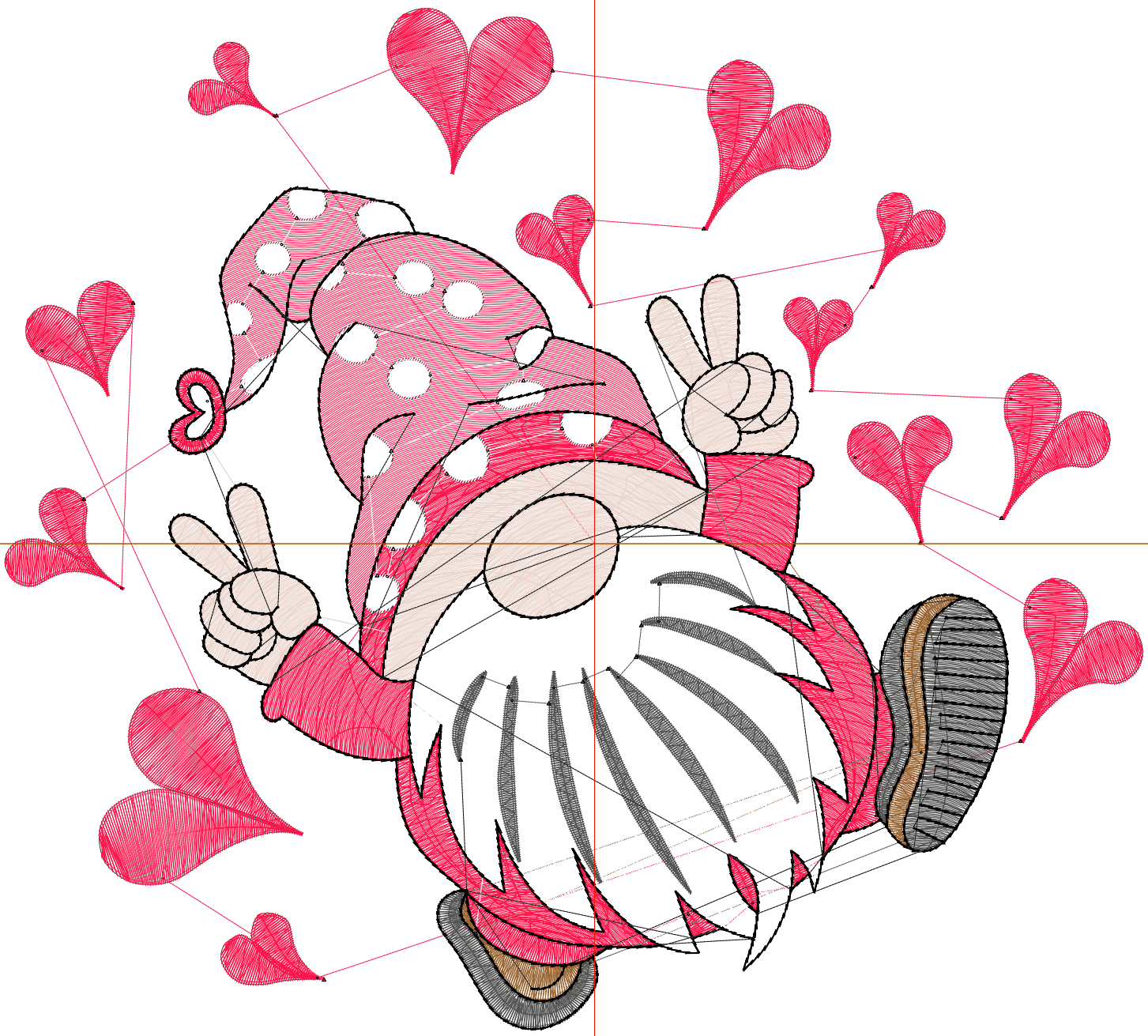
Wilcom EmbroideryStudio - Designing



Design: **7**

Title:

Stitches: 35,869  
Height: 6.74 in  
Width: 7.50 in  
Colors: 6  
Colorway: Colorway 1  
Zoom: 1:1



# Production Worksheet

Wilcom EmbroideryStudio - Designing



Design: **7**

Title:

Stitches: 35,869  
 Height: 6.74 in  
 Width: 7.50 in  
 Colors: 6  
 Colorway: Colorway 1  
 Zoom: 1:1

Machine format: Tajima  
 Color changes: 6  
 Stops: 7  
 Trims: 102  
 Appliqués: 0  
 Left: 98.8 mm  
 Right: 91.8 mm  
 Up: 89.7 mm  
 Down: 81.5 mm  
 EndX: 0.00 in  
 EndY: 0.00 in  
 Area 50.56 in<sup>2</sup>  
 Max stitch: 12.1 mm  
 Min stitch: 0.0 mm  
 Max jump: 7.0 mm  
 Total thread: 643.43ft  
 Total bobbin: 240.46ft

Stop Sequence:

#	N#	Color	St.	Code	Name	Chart
1.	2		15,154		R253 G22 B76	
2.	14		660		R153 G102 B51	
3.	3		2,075		R84 G84 B83	
4.	9		6,181		R255 G255 B255	
5.	1		5,029		R235 G213 B204	
6.	3		1,923		R84 G84 B83	
7.	8		4,845	8	Black	Default