

Production Worksheet

Wilcom EmbroideryStudio - Designing



Design: **3**

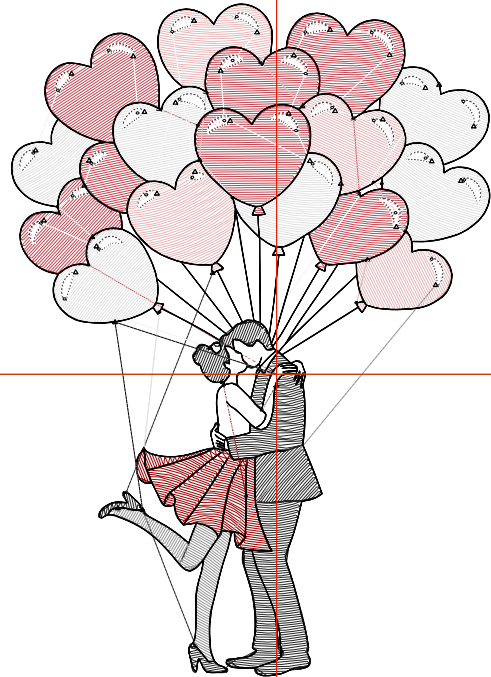
Title:

Stitches: 8,890
 Height: 3.50 in
 Width: 2.49 in
 Colors: 8
 Colorway: Colorway 1
 Zoom: 1:1

Machine format: Tajima
 Color changes: 7
 Stops: 8
 Trims: 48
 Appliqués: 0
 Left: 35.0 mm
 Right: 28.2 mm
 Up: 49.0 mm
 Down: 39.9 mm
 EndX: 0.00 in
 EndY: 0.00 in
 Area 8.71 in²
 Max stitch: 6.6 mm
 Min stitch: 0.0 mm
 Max jump: 6.6 mm
 Total thread: 117.65ft
 Total bobbin: 33.60ft

Stop Sequence:

#	N#	Color	St.	Code	Name	Chart
1.	1		1,405	R191 G71 B83		
2.	2		872	R230 G184 B186		
3.	4		996	R36 G36 B36		
4.	11		568	11 Dark Red		Default
5.	3		1,240	R227 G227 B227		
6.	9		1,668	9 White		Default
7.	5		320	R150 G150 B150		
8.	8		1,819	8 Black		Default



Production Worksheet

Wilcom EmbroideryStudio - Designing



Design: **4**

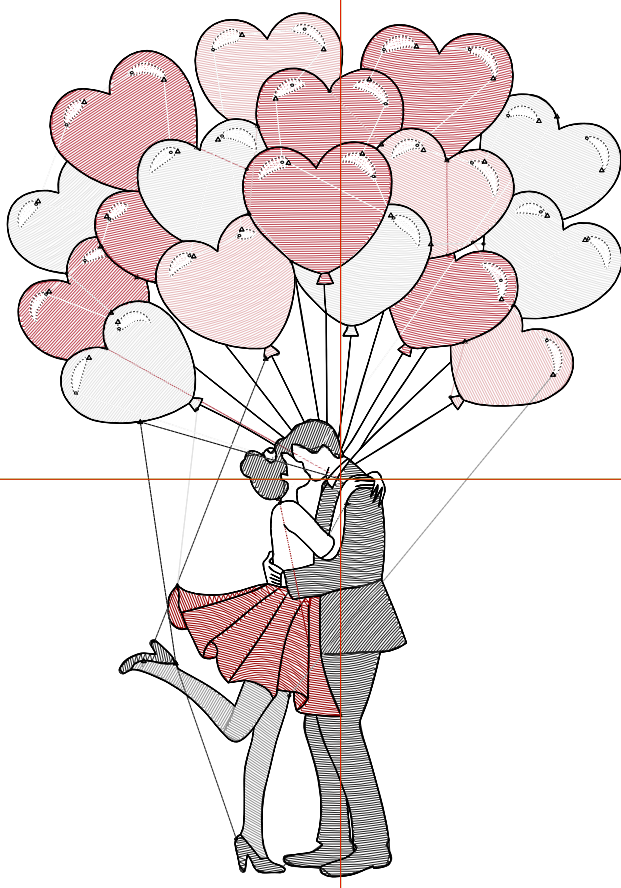
Title:

Stitches: 11,992
 Height: 4.50 in
 Width: 3.20 in
 Colors: 8
 Colorway: Colorway 1
 Zoom: 1:1

Machine format: Tajima
 Color changes: 7
 Stops: 8
 Trims: 49
 Appliqués: 0
 Left: 44.1 mm
 Right: 37.3 mm
 Up: 61.7 mm
 Down: 52.6 mm
 EndX: 0.00 in
 EndY: 0.00 in
 Area: 14.40 in²
 Max stitch: 7.3 mm
 Min stitch: 0.0 mm
 Max jump: 6.6 mm
 Total thread: 168.48ft
 Total bobbin: 51.66ft

Stop Sequence:

#	N#	Color	St.	Code	Name	Chart
1.	1		2,057		R191 G71 B83	
2.	2		1,282		R230 G184 B186	
3.	4		1,399		R36 G36 B36	
4.	11		819	11	Dark Red	Default
5.	3		1,837		R227 G227 B227	
6.	9		2,043	9	White	Default
7.	5		444		R150 G150 B150	
8.	8		2,109	8	Black	Default



Production Worksheet

Wilcom EmbroideryStudio - Designing



Design: **5**

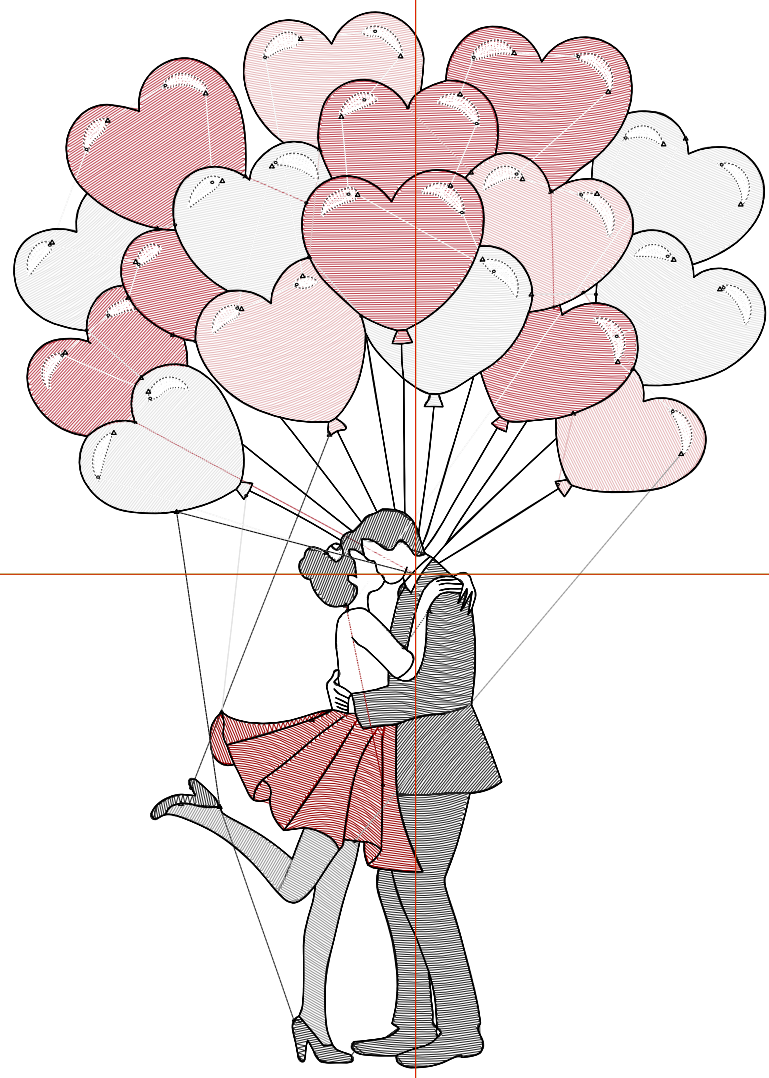
Title:

Stitches: 15,418
 Height: 5.50 in
 Width: 3.91 in
 Colors: 8
 Colorway: Colorway 1
 Zoom: 1:1

Machine format: Tajima
 Color changes: 7
 Stops: 8
 Trims: 51
 Appliqués: 0
 Left: 53.1 mm
 Right: 46.3 mm
 Up: 74.4 mm
 Down: 65.3 mm
 EndX: 0.00 in
 EndY: 0.00 in
 Area: 21.51 in²
 Max stitch: 9.3 mm
 Min stitch: 0.0 mm
 Max jump: 6.9 mm
 Total thread: 227.27ft
 Total bobbin: 73.17ft

Stop Sequence:

#	N#	Color	St.	Code	Name	Chart
1.	1		2,849	R191 G71 B83		
2.	2		1,748	R230 G184 B186		
3.	4		1,837	R36 G36 B36		
4.	11		1,095	11 Dark Red		Default
5.	3		2,497	R227 G227 B227		
6.	9		2,424	9 White		Default
7.	5		563	R150 G150 B150		
8.	8		2,403	8 Black		Default



Production Worksheet

Wilcom EmbroideryStudio - Designing



Design: **6**

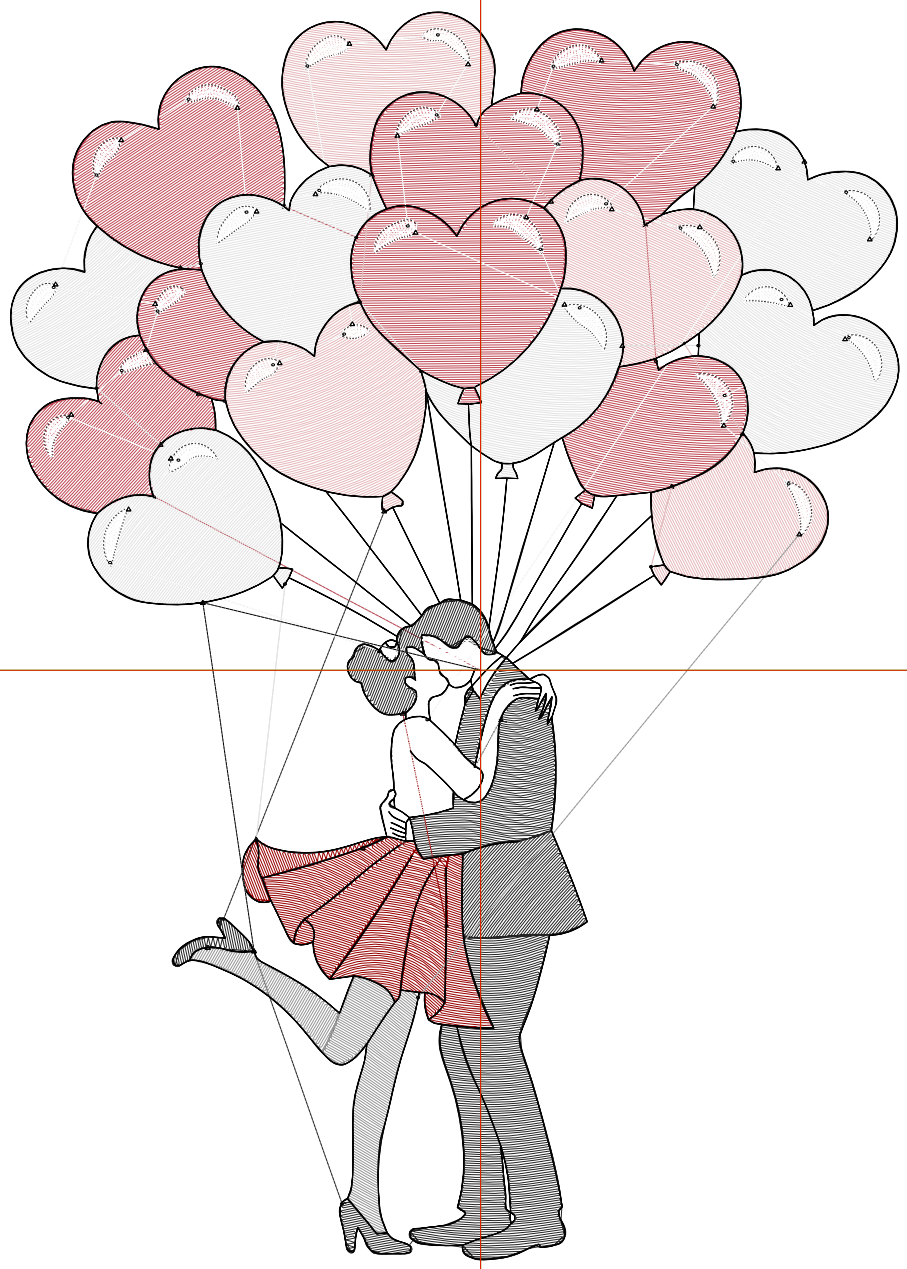
Title:

Stitches: 19,164
 Height: 6.50 in
 Width: 4.63 in
 Colors: 8
 Colorway: Colorway 1
 Zoom: 1:1

Machine format: Tajima
 Color changes: 7
 Stops: 8
 Trims: 51
 Appliqués: 0
 Left: 62.2 mm
 Right: 55.3 mm
 Up: 87.1 mm
 Down: 78.0 mm
 EndX: 0.00 in
 EndY: 0.00 in
 Area: 30.05 in²
 Max stitch: 10.6 mm
 Min stitch: 0.0 mm
 Max jump: 6.8 mm
 Total thread: 294.26ft
 Total bobbin: 98.30ft

Stop Sequence:

#	N#	Color	St.	Code	Name	Chart
1.	1		3,699		R191 G71 B83	
2.	2		2,284		R230 G184 B186	
3.	4		2,396		R36 G36 B36	
4.	11		1,394	11	Dark Red	Default
5.	3		3,260		R227 G227 B227	
6.	9		2,747	9	White	Default
7.	5		685		R150 G150 B150	
8.	8		2,697	8	Black	Default



Production Worksheet

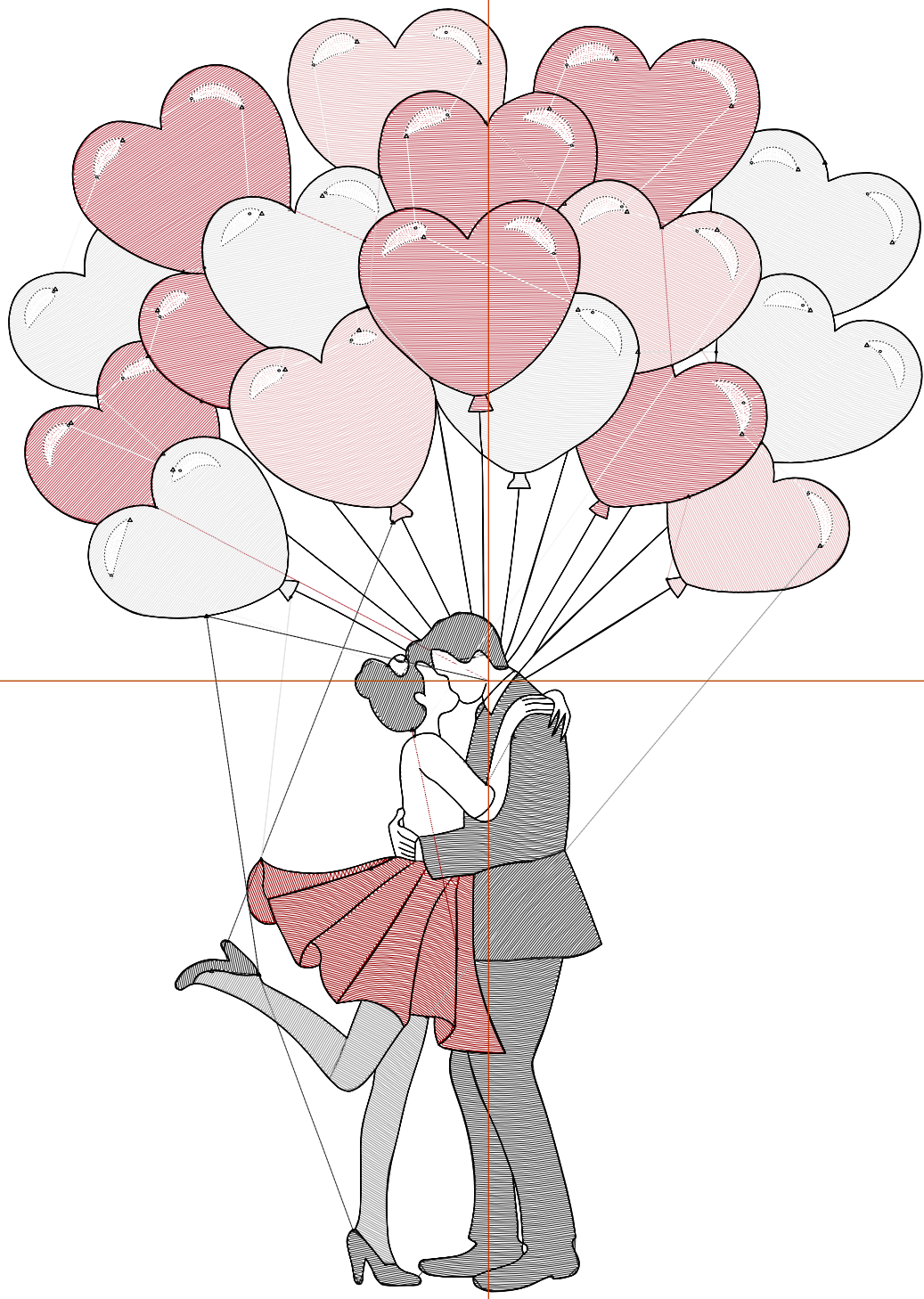
Wilcom EmbroideryStudio - Designing



Design: **7**

Title:

Stitches: 23,288
Height: 7.50 in
Width: 5.34 in
Colors: 8
Colorway: Colorway 1
Zoom: 1:1



1

2

2

Production Worksheet

Wilcom EmbroideryStudio - Designing



Design: **7**

Title:

Stitches: 23,288
 Height: 7.50 in
 Width: 5.34 in
 Colors: 8
 Colorway: Colorway 1
 Zoom: 1:1

Machine format: Tajima
 Color changes: 7
 Stops: 8
 Trims: 51
 Appliqués: 0
 Left: 71.2 mm
 Right: 64.4 mm
 Up: 99.8 mm
 Down: 90.7 mm
 EndX: 0.00 in
 EndY: 0.00 in
 Area 40.01 in²
 Max stitch: 7.0 mm
 Min stitch: 0.0 mm
 Max jump: 7.0 mm
 Total thread: 369.55ft
 Total bobbin: 126.89ft

Stop Sequence:

#	N#	Color	St.	Code	Name	Chart
1.	1		4,663		R191 G71 B83	
2.	2		2,867		R230 G184 B186	
3.	4		2,968		R36 G36 B36	
4.	11		1,707	11	Dark Red	Default
5.	3		4,108		R227 G227 B227	
6.	9		3,157	9	White	Default
7.	5		856		R150 G150 B150	
8.	8		2,960	8	Black	Default