

# Production Worksheet

Wilcom EmbroideryStudio - Designing



Design: **3**

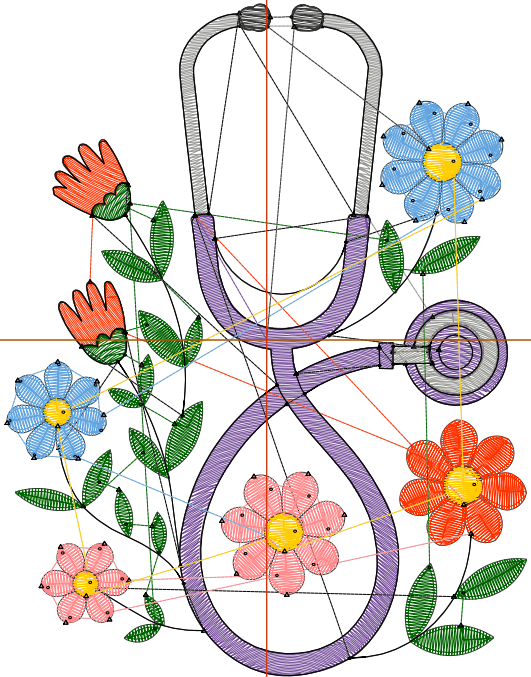
Title:

Stitches: 8,666  
 Height: 3.50 in  
 Width: 2.71 in  
 Colors: 9  
 Colorway: Colorway 1  
 Zoom: 1:1

Machine format: Tajima  
 Color changes: 8  
 Stops: 9  
 Trims: 74  
 Appliqués: 0  
 Left: 34.4 mm  
 Right: 34.4 mm  
 Up: 44.4 mm  
 Down: 44.4 mm  
 EndX: 0.00 in  
 EndY: 0.00 in  
 Area 9.46 in<sup>2</sup>  
 Max stitch: 6.9 mm  
 Min stitch: 0.0 mm  
 Max jump: 6.9 mm  
 Total thread: 120.89ft  
 Total bobbin: 36.19ft

Stop Sequence:

#	N#	Color	St.	Code	Name	Chart
1.	7		2,424		R116 G76 B153	
2.	6		912		R153 G153 B149	
3.	5		863		R255 G51 B0	
4.	2		1,480		R0 G99 B0	
5.	8		748	8	Black	Default
6.	3		853		R255 G137 B139	
7.	4		941		R96 G163 B222	
8.	1		306		R255 G204 B0	
9.	9		137		R53 G54 B51	



# Production Worksheet

Wilcom EmbroideryStudio - Designing



Design: **4**

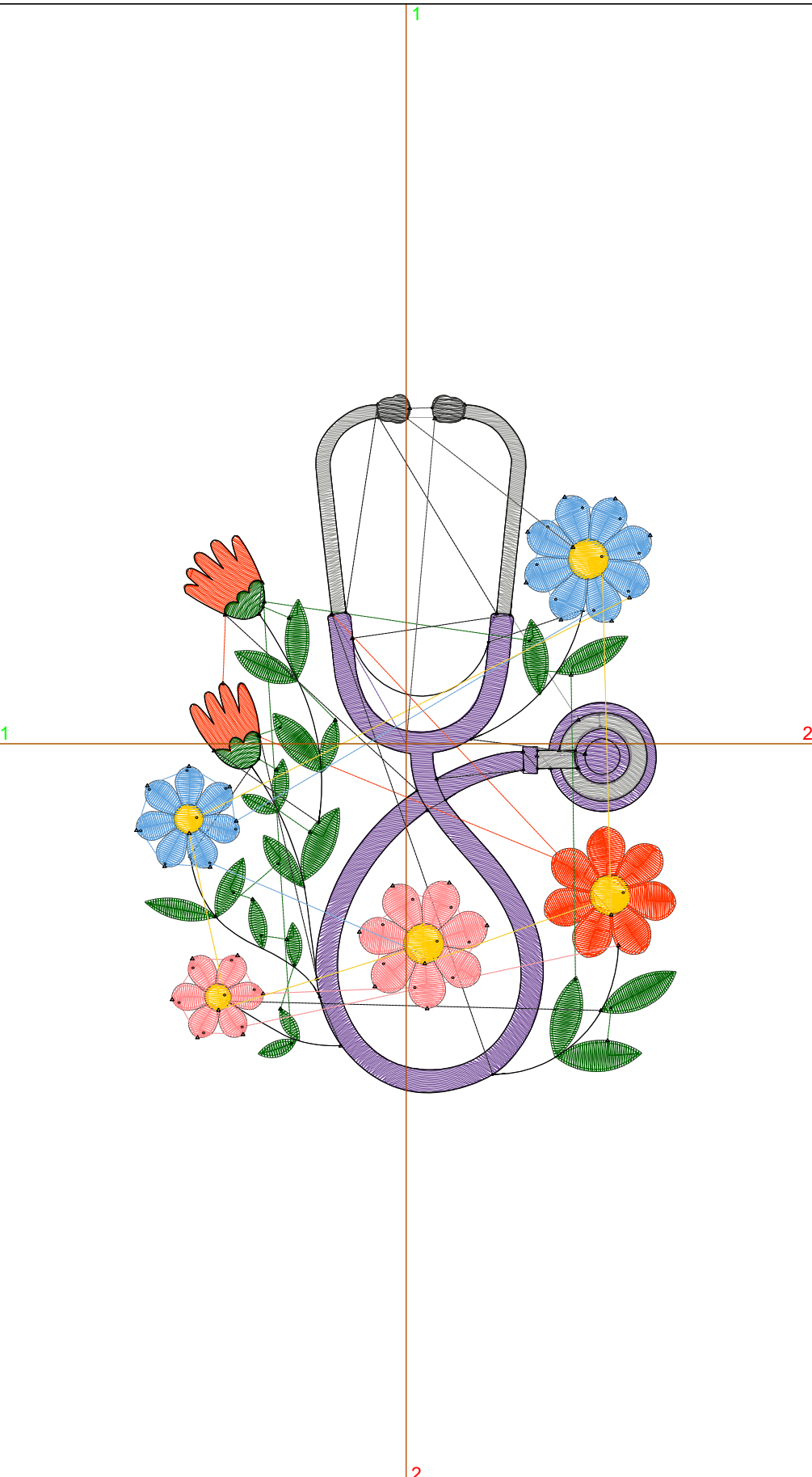
Title:

Stitches: 11,756  
 Height: 4.50 in  
 Width: 3.48 in  
 Colors: 9  
 Colorway: Colorway 1  
 Zoom: 1:1

Machine format: Tajima  
 Color changes: 8  
 Stops: 9  
 Trims: 76  
 Appliqués: 0  
 Left: 44.2 mm  
 Right: 44.2 mm  
 Up: 57.1 mm  
 Down: 57.1 mm  
 EndX: 0.00 in  
 EndY: 0.00 in  
 Area 15.64 in<sup>2</sup>  
 Max stitch: 7.0 mm  
 Min stitch: 0.0 mm  
 Max jump: 7.0 mm  
 Total thread: 178.86ft  
 Total bobbin: 58.53ft

Stop Sequence:

#	N#	Color	St.	Code	Name	Chart
1.	7		3,739	R116 G76 B153		
2.	6		1,315	R153 G153 B149		
3.	5		1,140	R255 G51 B0		
4.	2		1,869	R0 G99 B0		
5.	8		863	8 Black		Default
6.	3		1,051	R255 G137 B139		
7.	4		1,201	R96 G163 B222		
8.	1		380	R255 G204 B0		
9.	9		196	R53 G54 B51		



# Production Worksheet

Wilcom EmbroideryStudio - Designing



Design: **5**

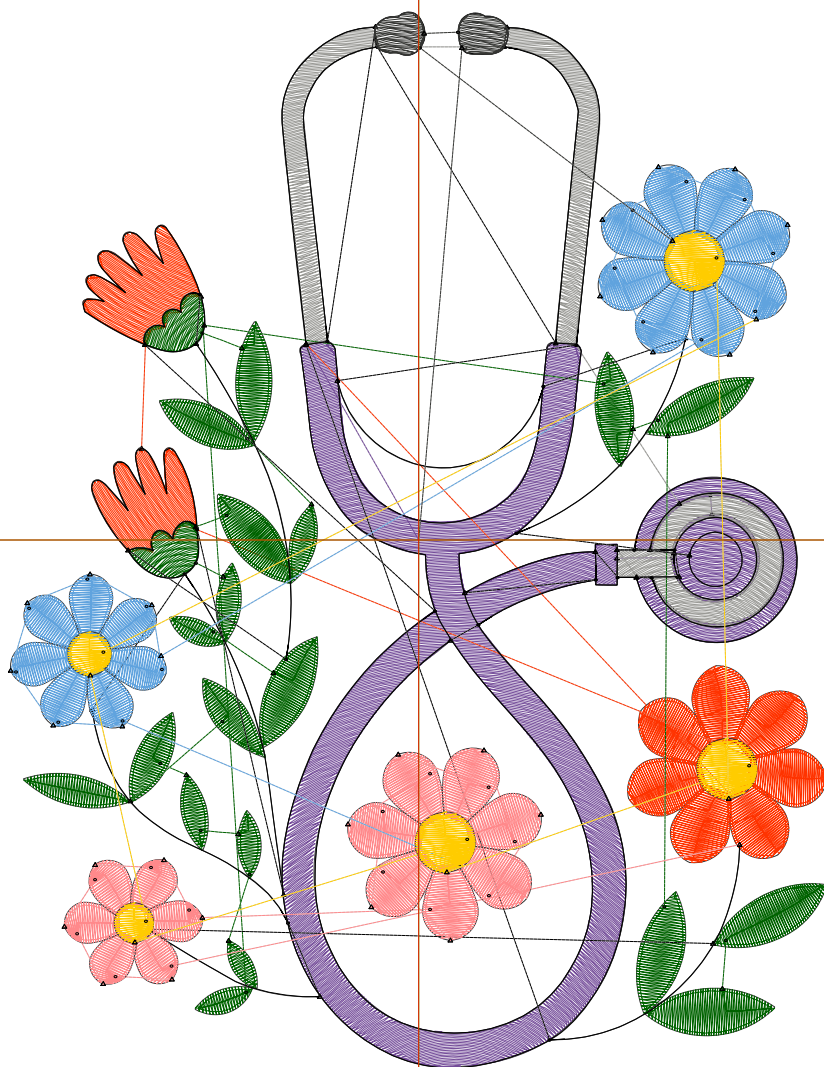
Title:

Stitches: 14,962  
 Height: 5.50 in  
 Width: 4.25 in  
 Colors: 9  
 Colorway: Colorway 1  
 Zoom: 1:1

Machine format: Tajima  
 Color changes: 8  
 Stops: 9  
 Trims: 80  
 Appliqués: 0  
 Left: 54.0 mm  
 Right: 54.0 mm  
 Up: 69.8 mm  
 Down: 69.8 mm  
 EndX: 0.00 in  
 EndY: 0.00 in  
 Area: 23.37 in<sup>2</sup>  
 Max stitch: 7.9 mm  
 Min stitch: 0.0 mm  
 Max jump: 6.9 mm  
 Total thread: 246.01ft  
 Total bobbin: 85.85ft

Stop Sequence:

#	N#	Color	St.	Code	Name	Chart
1.	7		5,014		R116 G76 B153	
2.	6		1,760		R153 G153 B149	
3.	5		1,472		R255 G51 B0	
4.	2		2,302		R0 G99 B0	
5.	8		995	8	Black	Default
6.	3		1,273		R255 G137 B139	
7.	4		1,451		R96 G163 B222	
8.	1		456		R255 G204 B0	
9.	9		237		R53 G54 B51	



# Production Worksheet

Wilcom EmbroideryStudio - Designing



Design: **6**

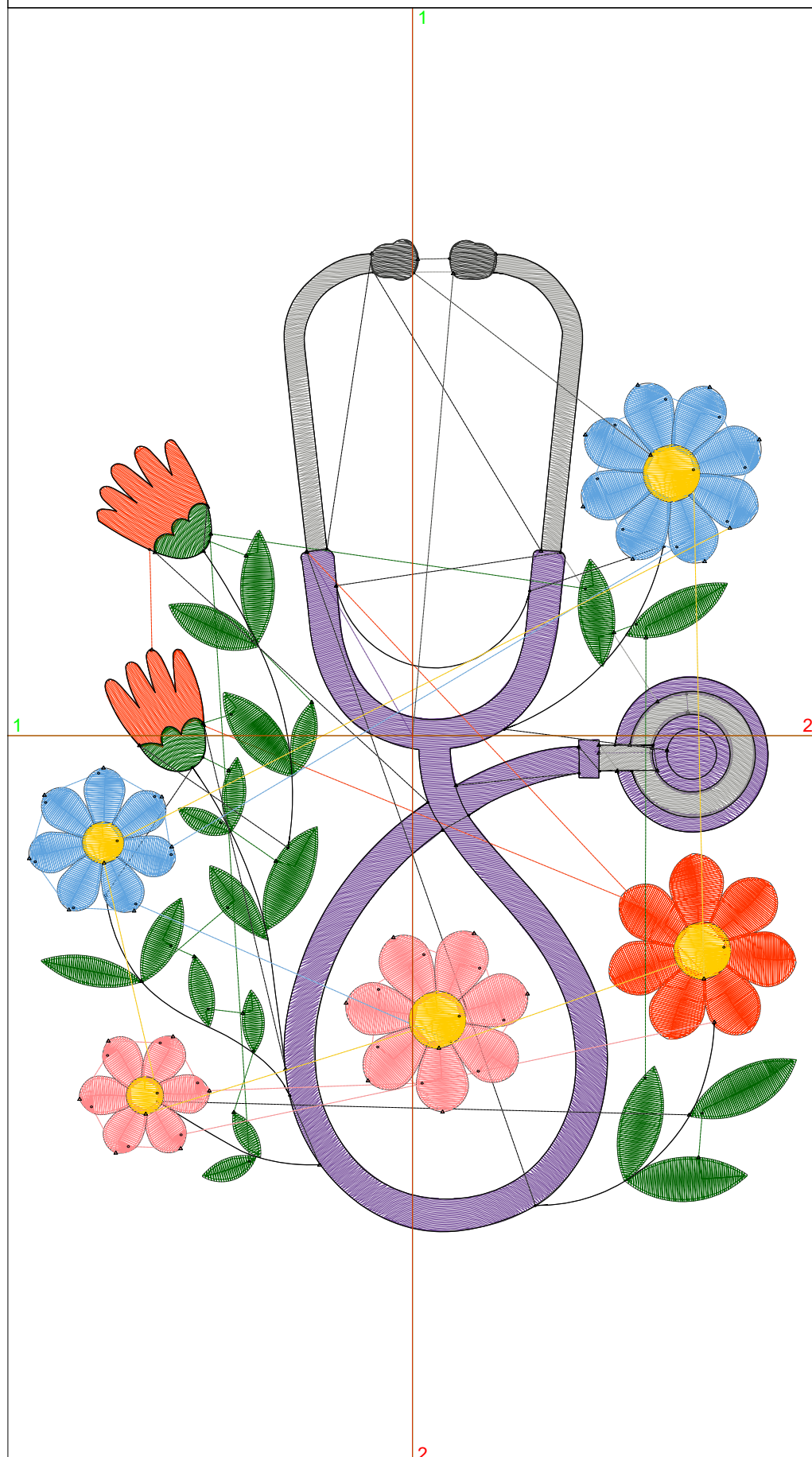
Title:

Stitches: 18,466  
 Height: 6.50 in  
 Width: 5.02 in  
 Colors: 9  
 Colorway: Colorway 1  
 Zoom: 1:1

Machine format: Tajima  
 Color changes: 8  
 Stops: 9  
 Trims: 80  
 Appliqués: 0  
 Left: 63.8 mm  
 Right: 63.8 mm  
 Up: 82.5 mm  
 Down: 82.5 mm  
 EndX: 0.00 in  
 EndY: 0.00 in  
 Area: 32.64 in<sup>2</sup>  
 Max stitch: 9.4 mm  
 Min stitch: 0.0 mm  
 Max jump: 7.0 mm  
 Total thread: 324.69ft  
 Total bobbin: 118.85ft

Stop Sequence:

#	N#	Color	St.	Code	Name	Chart
1.	7		6,622		R116 G76 B153	
2.	6		2,275		R153 G153 B149	
3.	5		1,764		R255 G51 B0	
4.	2		2,742		R0 G99 B0	
5.	8		1,107	8	Black	Default
6.	3		1,450		R255 G137 B139	
7.	4		1,680		R96 G163 B222	
8.	1		529		R255 G204 B0	
9.	9		295		R53 G54 B51	



# Production Worksheet

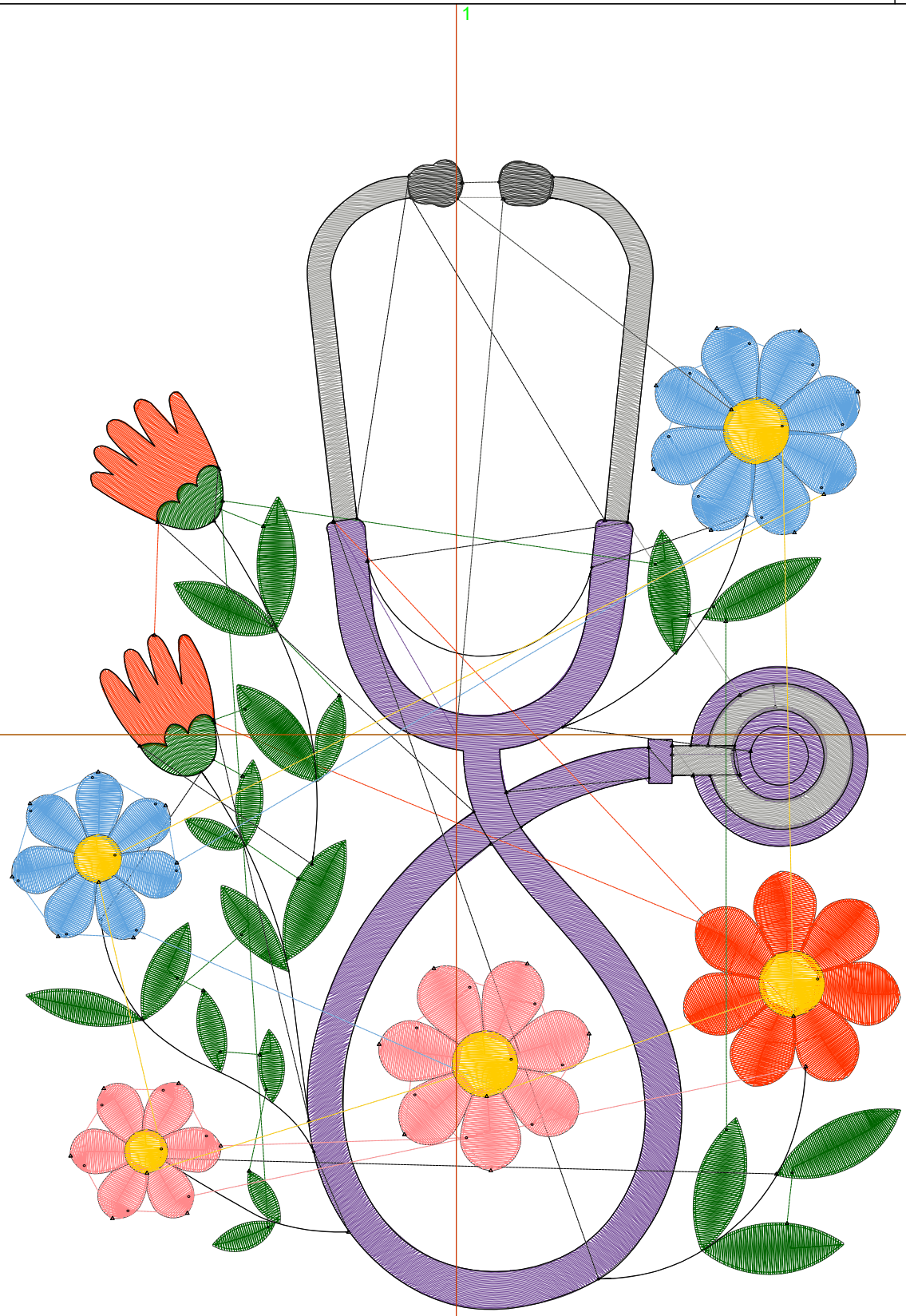
Wilcom EmbroideryStudio - Designing



Design: **7**

Title:

Stitches: 22,314  
Height: 7.50 in  
Width: 5.80 in  
Colors: 9  
Colorway: Colorway 1  
Zoom: 1:1



# Production Worksheet

Wilcom EmbroideryStudio - Designing



Design: **7**

Title:

Stitches: 22,314  
 Height: 7.50 in  
 Width: 5.80 in  
 Colors: 9  
 Colorway: Colorway 1  
 Zoom: 1:1

Machine format: Tajima  
 Color changes: 8  
 Stops: 9  
 Trims: 80  
 Appliqués: 0  
 Left: 73.6 mm  
 Right: 73.6 mm  
 Up: 95.2 mm  
 Down: 95.2 mm  
 EndX: 0.00 in  
 EndY: 0.00 in  
 Area 43.47 in<sup>2</sup>  
 Max stitch: 10.8 mm  
 Min stitch: 0.0 mm  
 Max jump: 7.0 mm  
 Total thread: 413.73ft  
 Total bobbin: 156.66ft

Stop Sequence:

#	N#	Color	St.	Code	Name	Chart
1.	7		8,418		R116 G76 B153	
2.	6		2,833		R153 G153 B149	
3.	5		2,120		R255 G51 B0	
4.	2		3,207		R0 G99 B0	
5.	8		1,214	8	Black	Default
6.	3		1,645		R255 G137 B139	
7.	4		1,911		R96 G163 B222	
8.	1		597		R255 G204 B0	
9.	9		367		R53 G54 B51	