

Production Worksheet

Wilcom EmbroideryStudio - Designing



Design: **3**

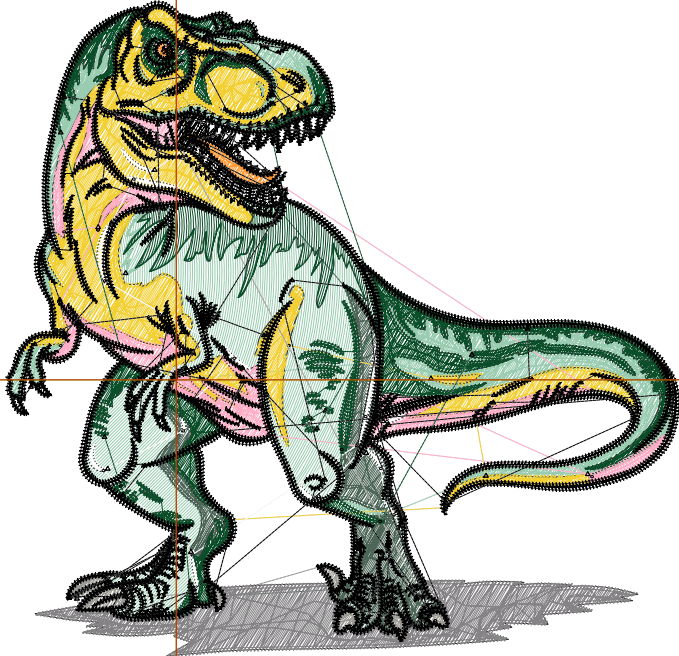
Title:

Stitches: 32,373
 Height: 3.42 in
 Width: 3.51 in
 Colors: 10
 Colorway: Colorway 1
 Zoom: 1:1

Machine format: Tajima
 Color changes: 9
 Stops: 10
 Trims: 147
 Appliqués: 0
 Left: 22.5 mm
 Right: 66.7 mm
 Up: 50.2 mm
 Down: 36.7 mm
 EndX: 0.00 in
 EndY: 0.00 in
 Area: 12.01 in²
 Max stitch: 8.8 mm
 Min stitch: 0.0 mm
 Max jump: 7.0 mm
 Total thread: 389.48ft
 Total bobbin: 102.98ft

Stop Sequence:

#	N#	Color	St.	Code	Name	Chart
1.	3		5,155		R153 G204 B176	
2.	4		1,207		R77 G102 B88	
3.	5		3,620		R242 G207 B50	
4.	12		217	12	Orange	Default
5.	6		1,748		R255 G173 B198	
6.	7		383		R156 G154 B148	
7.	1		1,588		R133 G131 B133	
8.	9		1,048	9	White	Default
9.	2		4,962		R10 G79 B41	
10.	10		12,443		R0 G0 B0	



Production Worksheet

Wilcom EmbroideryStudio - Designing



Design: **4**

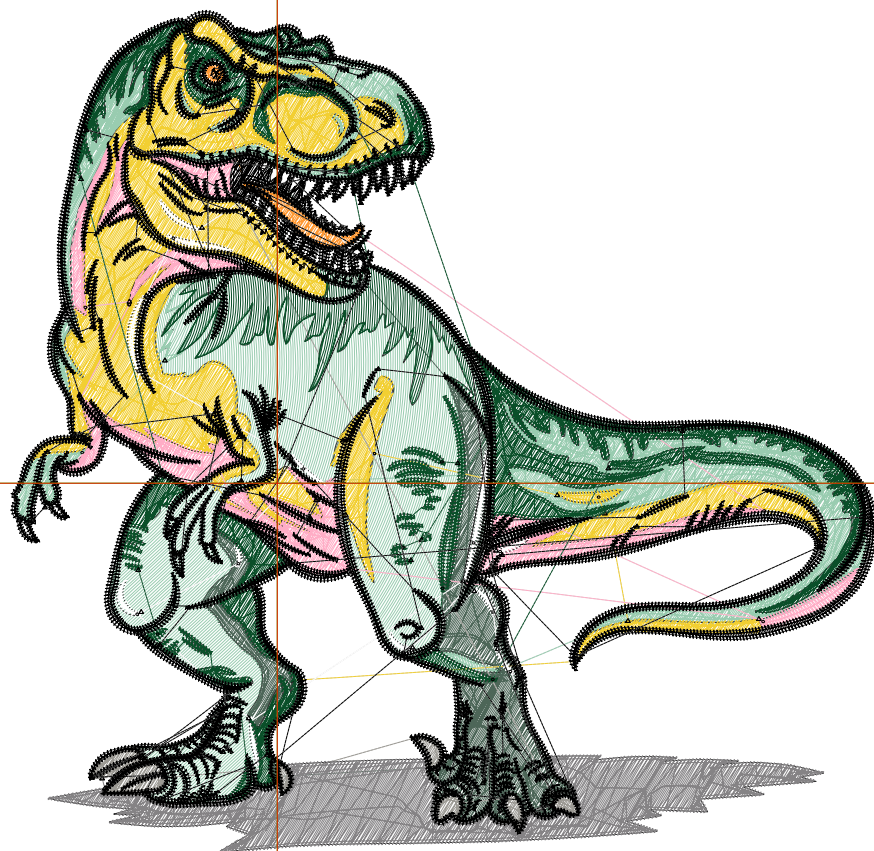
Title:

Stitches: 42,031
 Height: 4.39 in
 Width: 4.51 in
 Colors: 10
 Colorway: Colorway 1
 Zoom: 1:1

Machine format: Tajima
 Color changes: 9
 Stops: 10
 Trims: 162
 Appliqués: 0
 Left: 35.2 mm
 Right: 79.4 mm
 Up: 62.5 mm
 Down: 49.0 mm
 EndX: 0.00 in
 EndY: 0.00 in
 Area: 19.82 in²
 Max stitch: 11.3 mm
 Min stitch: 0.0 mm
 Max jump: 7.0 mm
 Total thread: 536.67ft
 Total bobbin: 152.65ft

Stop Sequence:

#	N#	Color	St.	Code	Name	Chart
1.	3		7,052		R153 G204 B176	
2.	4		1,676		R77 G102 B88	
3.	5		4,938		R242 G207 B50	
4.	12		268	12	Orange	Default
5.	6		2,323		R255 G173 B198	
6.	7		517		R156 G154 B148	
7.	1		2,159		R133 G131 B133	
8.	9		1,303	9	White	Default
9.	2		6,482		R10 G79 B41	
10.	10		15,311		R0 G0 B0	



Production Worksheet

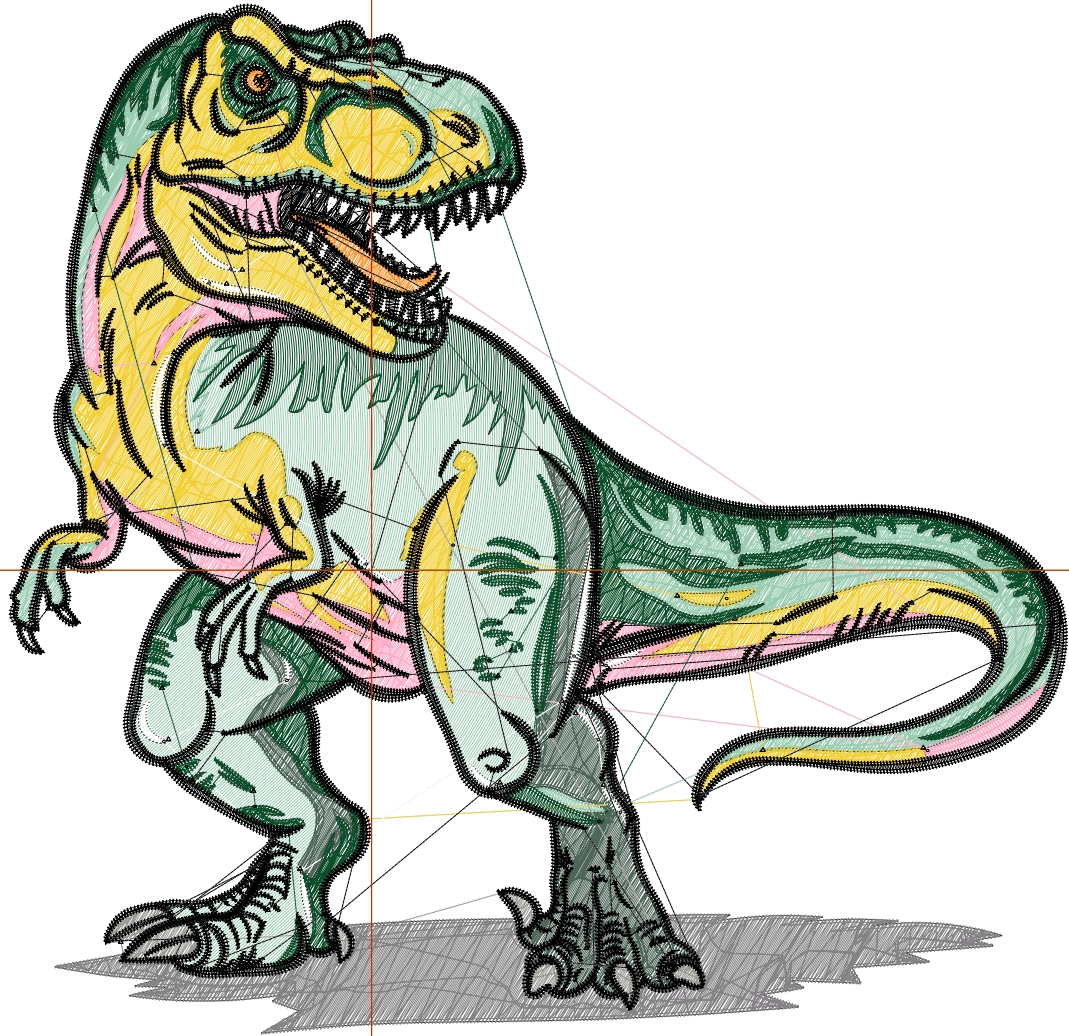
Wilcom EmbroideryStudio - Designing



Design: **5**

Title:

Stitches: 52,010
Height: 5.37 in
Width: 5.51 in
Colors: 10
Colorway: Colorway 1
Zoom: 1:1



Production Worksheet

Wilcom EmbroideryStudio - Designing



Design: **5**

Title:

Stitches: 52,010
 Height: 5.37 in
 Width: 5.51 in
 Colors: 10
 Colorway: Colorway 1
 Zoom: 1:1

Machine format: Tajima
 Color changes: 9
 Stops: 10
 Trims: 170
 Appliqués: 0
 Left: 47.9 mm
 Right: 92.1 mm
 Up: 74.9 mm
 Down: 61.4 mm
 EndX: 0.00 in
 EndY: 0.00 in
 Area 29.58 in²
 Max stitch: 8.7 mm
 Min stitch: 0.0 mm
 Max jump: 7.0 mm
 Total thread: 701.01ft
 Total bobbin: 211.24ft

Stop Sequence:

#	N#	Color	St.	Code	Name	Chart
1.	3		9,122		R153 G204 B176	
2.	4		2,143		R77 G102 B88	
3.	5		6,269		R242 G207 B50	
4.	12		333	12	Orange	Default
5.	6		2,853		R255 G173 B198	
6.	7		613		R156 G154 B148	
7.	1		2,822		R133 G131 B133	
8.	9		1,542	9	White	Default
9.	2		8,097		R10 G79 B41	
10.	10		18,214		R0 G0 B0	

Production Worksheet

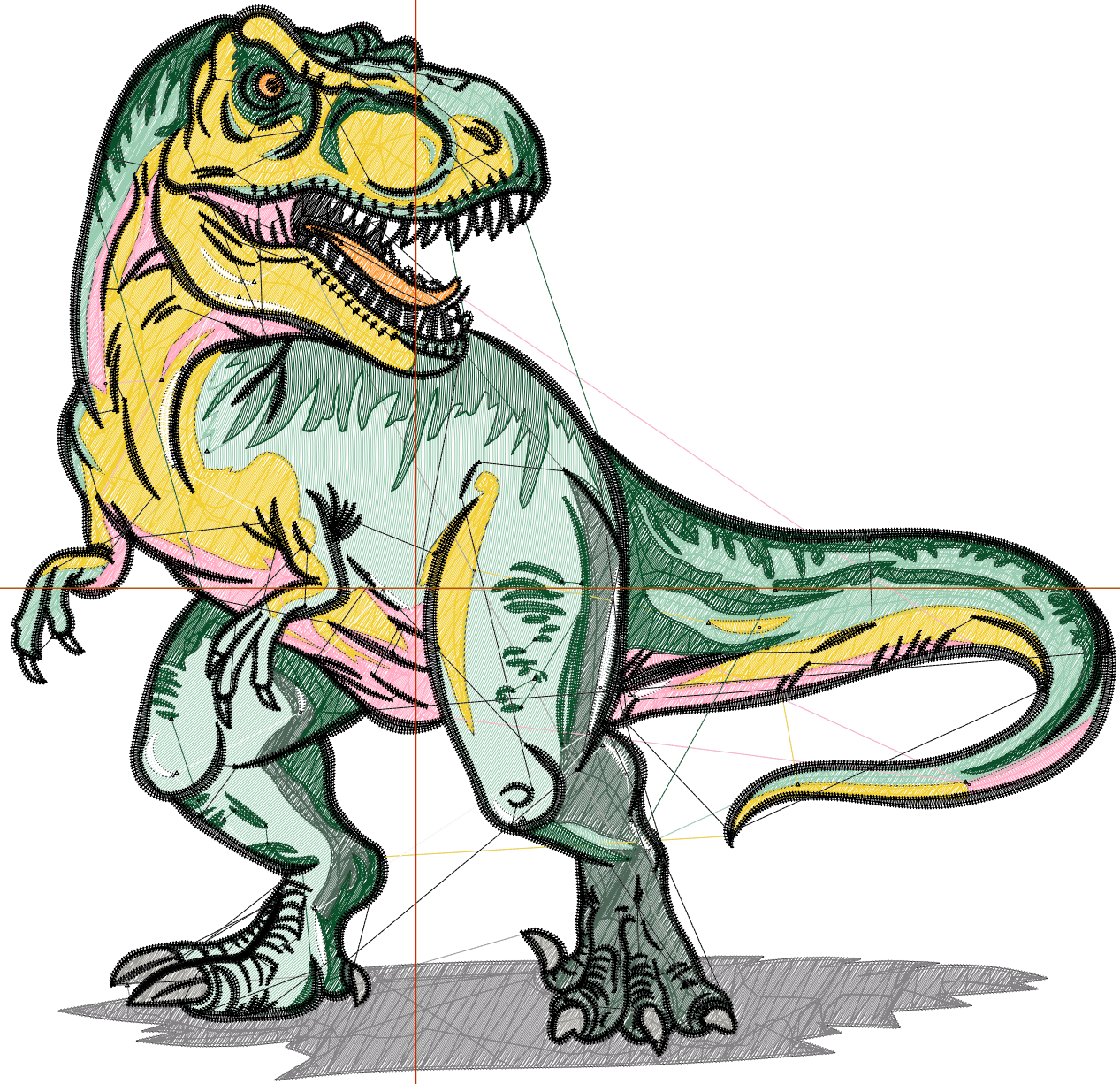
Wilcom EmbroideryStudio - Designing



Design: **6**

Title:

Stitches: 62,773
Height: 6.34 in
Width: 6.51 in
Colors: 10
Colorway: Colorway 1
Zoom: 1:1



Production Worksheet

Wilcom EmbroideryStudio - Designing



Design: **6**

Title:

Stitches: 62,773
 Height: 6.34 in
 Width: 6.51 in
 Colors: 10
 Colorway: Colorway 1
 Zoom: 1:1

Machine format: Tajima
 Color changes: 9
 Stops: 10
 Trims: 181
 Appliqués: 0
 Left: 60.7 mm
 Right: 104.8 mm
 Up: 87.3 mm
 Down: 73.7 mm
 EndX: 0.00 in
 EndY: 0.00 in
 Area 41.29 in²
 Max stitch: 7.0 mm
 Min stitch: 0.0 mm
 Max jump: 7.0 mm
 Total thread: 887.29ft
 Total bobbin: 279.77ft

Stop Sequence:

#	N#	Color	St.	Code	Name	Chart
1.	3		11,276		R153 G204 B176	
2.	4		2,819		R77 G102 B88	
3.	5		7,908		R242 G207 B50	
4.	12		390	12	Orange	Default
5.	6		3,420		R255 G173 B198	
6.	7		738		R156 G154 B148	
7.	1		3,517		R133 G131 B133	
8.	9		1,775	9	White	Default
9.	2		9,822		R10 G79 B41	
10.	10		21,106		R0 G0 B0	

Production Worksheet

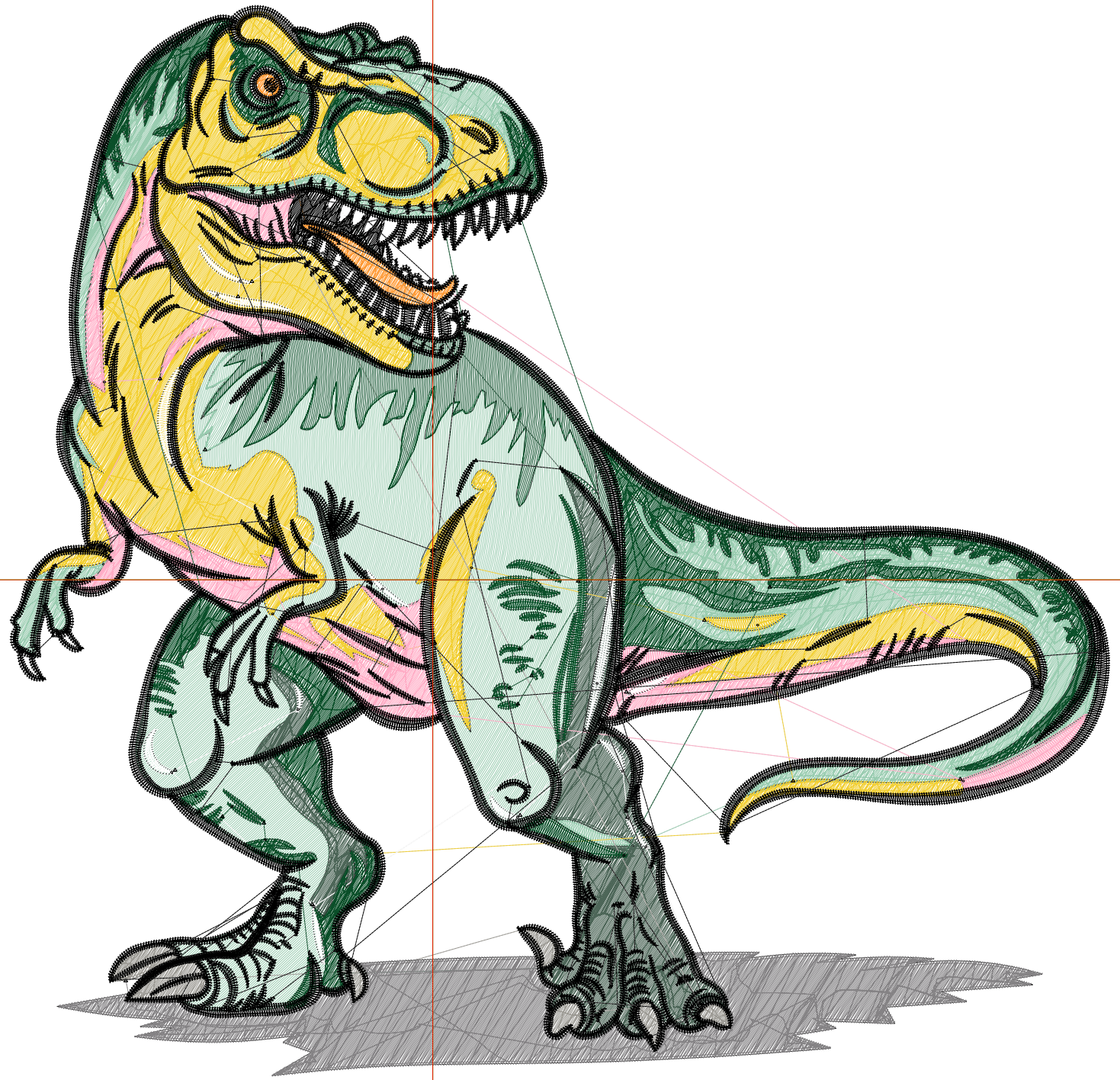
Wilcom EmbroideryStudio - Designing



Design: 7

Title:

Stitches: 74,046
Height: 7.31 in
Width: 7.51 in
Colors: 10
Colorway: Colorway 1
Zoom: 1:1



Production Worksheet

Wilcom EmbroideryStudio - Designing



Design: **7**

Title:

Stitches: 74,046
 Height: 7.31 in
 Width: 7.51 in
 Colors: 10
 Colorway: Colorway 1
 Zoom: 1:1

Machine format: Tajima
 Color changes: 9
 Stops: 10
 Trims: 201
 Appliqués: 0
 Left: 73.3 mm
 Right: 117.5 mm
 Up: 99.6 mm
 Down: 86.1 mm
 EndX: 0.00 in
 EndY: 0.00 in
 Area 54.95 in²
 Max stitch: 10.2 mm
 Min stitch: 0.0 mm
 Max jump: 7.0 mm
 Total thread: 1091.27ft
 Total bobbin: 356.82ft

Stop Sequence:

#	N#	Color	St.	Code	Name	Chart
1.	3		13,657		R153 G204 B176	
2.	4		3,410		R77 G102 B88	
3.	5		9,643		R242 G207 B50	
4.	12		467	12	Orange	Default
5.	6		4,090		R255 G173 B198	
6.	7		851		R156 G154 B148	
7.	1		4,311		R133 G131 B133	
8.	9		1,992	9	White	Default
9.	2		11,643		R10 G79 B41	
10.	10		23,980		R0 G0 B0	