

Production Worksheet

Wilcom EmbroideryStudio - Designing



Design: **5**

Title:

Stitches: 55,348
Height: 5.35 in
Width: 5.50 in
Colors: 8
Colorway: Colorway 1
Zoom: 1:1



Production Worksheet

Wilcom EmbroideryStudio - Designing



Design: **5**

Title:

Stitches: 55,348
 Height: 5.35 in
 Width: 5.50 in
 Colors: 8
 Colorway: Colorway 1
 Zoom: 1:1

Machine format: Tajima
 Color changes: 8
 Stops: 9
 Trims: 160
 Appliqués: 0
 Left: 76.3 mm
 Right: 63.4 mm
 Up: 75.2 mm
 Down: 60.6 mm
 EndX: 0.00 in
 EndY: 0.00 in
 Area 29.41 in²
 Max stitch: 9.8 mm
 Min stitch: 0.0 mm
 Max jump: 6.9 mm
 Total thread: 697.54ft
 Total bobbin: 196.39ft

Stop Sequence:

#	N#	Color	St.	Code	Name	Chart
1.	3		7,760	3	Red	Default
2.	2		784		R255 G98 B93	
3.	5		6,046	5	Aqua	Default
4.	2		2,972		R255 G98 B93	
5.	13		3,897	1310	Magenta	Madeira Classic 40
6.	12		4,086	12	Orange	Default
7.	7		1,293	1013	Peach Blush	Madeira Classic 40
8.	10		314	10	Dark Blue	Default
9.	8		28,194	8	Black	Default

Production Worksheet

Wilcom EmbroideryStudio - Designing



Design: **6**

Title:

Stitches: 61,476
Height: 5.83 in
Width: 5.99 in
Colors: 8
Colorway: Colorway 1
Zoom: 1:1



Production Worksheet

Wilcom EmbroideryStudio - Designing



Design: **6**

Title:

Stitches: 61,476
 Height: 5.83 in
 Width: 5.99 in
 Colors: 8
 Colorway: Colorway 1
 Zoom: 1:1

Machine format: Tajima
 Color changes: 8
 Stops: 9
 Trims: 168
 Appliqués: 0
 Left: 82.6 mm
 Right: 69.6 mm
 Up: 81.4 mm
 Down: 66.8 mm
 EndX: 0.00 in
 EndY: 0.00 in
 Area 34.95 in²
 Max stitch: 6.7 mm
 Min stitch: 0.0 mm
 Max jump: 6.7 mm
 Total thread: 790.73ft
 Total bobbin: 227.78ft

Stop Sequence:

#	N#	Color	St.	Code	Name	Chart
1.	3		8,699	3	Red	Default
2.	2		862		R255 G98 B93	
3.	5		6,832	5	Aqua	Default
4.	2		3,348		R255 G98 B93	
5.	13		4,355	1310	Magenta	Madeira Classic 40
6.	12		4,521	12	Orange	Default
7.	7		1,435	1013	Peach Blush	Madeira Classic 40
8.	10		333	10	Dark Blue	Default
9.	8		31,089	8	Black	Default

Production Worksheet

Wilcom EmbroideryStudio - Designing



Design: **6**

Title:

Stitches: 67,959
Height: 6.32 in
Width: 6.50 in
Colors: 8
Colorway: Colorway 1
Zoom: 1:1



1

1

2

2

Production Worksheet

Wilcom EmbroideryStudio - Designing



Design: **6**

Title:

Stitches: 67,959
 Height: 6.32 in
 Width: 6.50 in
 Colors: 8
 Colorway: Colorway 1
 Zoom: 1:1

Machine format: Tajima
 Color changes: 8
 Stops: 9
 Trims: 179
 Appliqués: 0
 Left: 89.0 mm
 Right: 76.1 mm
 Up: 87.6 mm
 Down: 72.9 mm
 EndX: 0.00 in
 EndY: 0.00 in
 Area 41.07 in²
 Max stitch: 6.9 mm
 Min stitch: 0.0 mm
 Max jump: 7.0 mm
 Total thread: 887.31ft
 Total bobbin: 259.81ft

Stop Sequence:

#	N#	Color	St.	Code	Name	Chart
1.	3		9,627	3	Red	Default
2.	2		946		R255 G98 B93	
3.	5		7,604	5	Aqua	Default
4.	2		3,679		R255 G98 B93	
5.	13		4,814	1310	Magenta	Madeira Classic 40
6.	12		5,081	12	Orange	Default
7.	7		1,628	1013	Peach Blush	Madeira Classic 40
8.	10		350	10	Dark Blue	Default
9.	8		34,228	8	Black	Default

Production Worksheet

Wilcom EmbroideryStudio - Designing



Design: 7

Title:

Stitches: 74,562
Height: 6.80 in
Width: 7.00 in
Colors: 8
Colorway: Colorway 1
Zoom: 1:1



Production Worksheet

Wilcom EmbroideryStudio - Designing



Design: **7**

Title:

Stitches: 74,562
 Height: 6.80 in
 Width: 7.00 in
 Colors: 8
 Colorway: Colorway 1
 Zoom: 1:1

Machine format: Tajima
 Color changes: 8
 Stops: 9
 Trims: 188
 Appliqués: 0
 Left: 95.3 mm
 Right: 82.5 mm
 Up: 93.7 mm
 Down: 79.1 mm
 EndX: 0.00 in
 EndY: 0.00 in
 Area 47.63 in²
 Max stitch: 7.0 mm
 Min stitch: 0.0 mm
 Max jump: 7.0 mm
 Total thread: 989.63ft
 Total bobbin: 294.77ft

Stop Sequence:

#	N#	Color	St.	Code	Name	Chart
1.	3		10,660	3	Red	Default
2.	2		1,075		R255 G98 B93	
3.	5		8,583	5	Aqua	Default
4.	2		4,078		R255 G98 B93	
5.	13		5,269	1310	Magenta	Madeira Classic 40
6.	12		5,420	12	Orange	Default
7.	7		1,802	1013	Peach Blush	Madeira Classic 40
8.	10		384	10	Dark Blue	Default
9.	8		37,289	8	Black	Default

Production Worksheet

Wilcom EmbroideryStudio - Designing



Design: 7

Title:

Stitches: 81,223
Height: 7.29 in
Width: 7.49 in
Colors: 8
Colorway: Colorway 1
Zoom: 1:1



Production Worksheet

Wilcom EmbroideryStudio - Designing



Design: **7**

Title:

Stitches: 81,223
 Height: 7.29 in
 Width: 7.49 in
 Colors: 8
 Colorway: Colorway 1
 Zoom: 1:1

Machine format: Tajima
 Color changes: 8
 Stops: 9
 Trims: 188
 Appliqués: 0
 Left: 101.7 mm
 Right: 88.6 mm
 Up: 99.9 mm
 Down: 85.3 mm
 EndX: 0.00 in
 EndY: 0.00 in
 Area 54.60 in²
 Max stitch: 7.0 mm
 Min stitch: 0.0 mm
 Max jump: 7.0 mm
 Total thread: 1095.56ft
 Total bobbin: 331.64ft

Stop Sequence:

#	N#	Color	St.	Code	Name	Chart
1.	3		11,651	3	Red	Default
2.	2		1,167		R255 G98 B93	
3.	5		9,503	5	Aqua	Default
4.	2		4,436		R255 G98 B93	
5.	13		5,685	1310	Magenta	Madeira Classic 40
6.	12		5,937	12	Orange	Default
7.	7		1,989	1013	Peach Blush	Madeira Classic 40
8.	10		439	10	Dark Blue	Default
9.	8		40,414	8	Black	Default

Production Worksheet

Wilcom EmbroideryStudio - Designing



Design: 8

Title:

Stitches: 87,931
Height: 7.77 in
Width: 8.00 in
Colors: 8
Colorway: Colorway 1
Zoom: 1:1



Production Worksheet

Wilcom EmbroideryStudio - Designing



Design: **8**

Title:

Stitches: 87,931
 Height: 7.77 in
 Width: 8.00 in
 Colors: 8
 Colorway: Colorway 1
 Zoom: 1:1

Machine format: Tajima
 Color changes: 8
 Stops: 9
 Trims: 200
 Appliqués: 0
 Left: 108.0 mm
 Right: 95.2 mm
 Up: 106.1 mm
 Down: 91.4 mm
 EndX: 0.00 in
 EndY: 0.00 in
 Area 62.20 in²
 Max stitch: 6.9 mm
 Min stitch: 0.0 mm
 Max jump: 6.9 mm
 Total thread: 1204.03ft
 Total bobbin: 369.84ft

Stop Sequence:

#	N#	Color	St.	Code	Name	Chart
1.	3		12,699	3	Red	Default
2.	2		1,285		R255 G98 B93	
3.	5		10,322	5	Aqua	Default
4.	2		4,773		R255 G98 B93	
5.	13		6,136	1310	Magenta	Madeira Classic 40
6.	12		6,603	12	Orange	Default
7.	7		2,174	1013	Peach Blush	Madeira Classic 40
8.	10		462	10	Dark Blue	Default
9.	8		43,475	8	Black	Default

Production Worksheet

Wilcom EmbroideryStudio - Designing



Design: 8

Title:

Stitches: 95,517
Height: 8.26 in
Width: 8.50 in
Colors: 8
Colorway: Colorway 1
Zoom: 1:1



1 1
1 1

2 2
2 2

Production Worksheet

Wilcom EmbroideryStudio - Designing

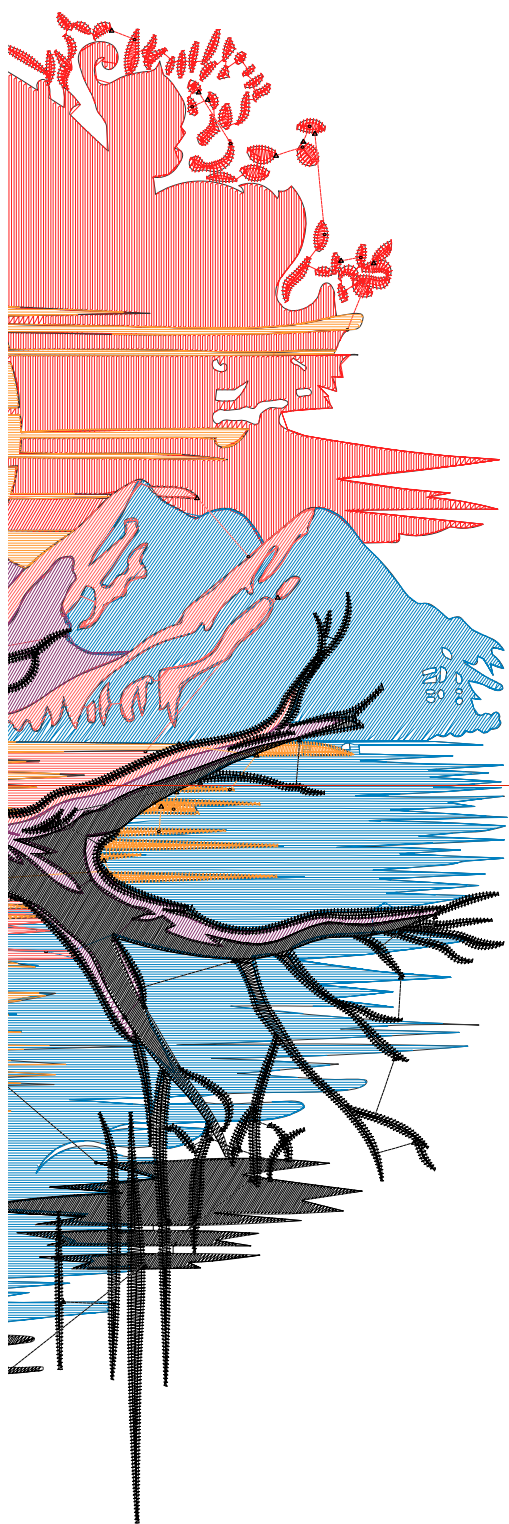


Design: **8**

Title:

Stitches: 95,517
 Height: 8.26 in
 Width: 8.50 in
 Colors: 8
 Colorway: Colorway 1
 Zoom: 1:1

1 1
 1 1



Machine format: Tajima
 Color changes: 8
 Stops: 9
 Trims: 218
 Appliqués: 0
 Left: 114.4 mm
 Right: 101.5 mm
 Up: 112.2 mm
 Down: 97.6 mm
 EndX: 0.00 in
 EndY: 0.00 in
 Area: 70.21 in²
 Max stitch: 7.0 mm
 Min stitch: 0.0 mm
 Max jump: 7.0 mm
 Total thread: 1327.13ft
 Total bobbin: 413.29ft

Stop Sequence:

#	N#	Color	St.	Code	Name	Chart
1.	3		13,723	3	Red	Default
2.	2		1,411		R255 G98 B93	
3.	5		11,577	5	Aqua	Default
4.	2		5,134		R255 G98 B93	
5.	13		6,752	1310	Magenta	Madeira Classic 40
6.	12		7,211	12	Orange	Default
7.	7		2,361	1013	Peach Blush	Madeira Classic 40
8.	10		467	10	Dark Blue	Default
9.	8		46,879	8	Black	Default

2

2 2
 2 2