

Production Worksheet

Wilcom EmbroideryStudio - Designing



Design: **3**

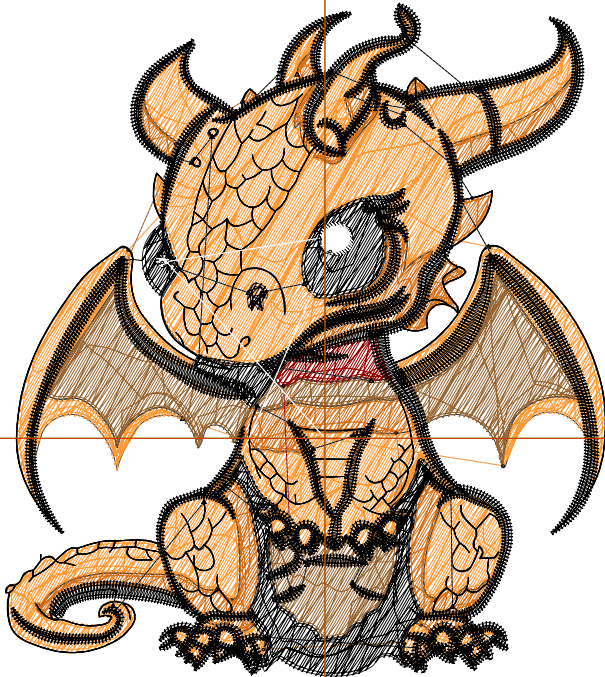
Title:

Stitches: 18,149
 Height: 3.51 in
 Width: 3.13 in
 Colors: 6
 Colorway: Colorway 1
 Zoom: 1:1

Machine format: Tajima
 Color changes: 5
 Stops: 6
 Trims: 52
 Appliqués: 0
 Left: 42.3 mm
 Right: 37.2 mm
 Up: 57.6 mm
 Down: 31.6 mm
 EndX: 0.00 in
 EndY: 0.00 in
 Area 10.98 in²
 Max stitch: 11.2 mm
 Min stitch: 0.0 mm
 Max jump: 6.8 mm
 Total thread: 266.17ft
 Total bobbin: 85.99ft

Stop Sequence:

#	N#	Color	St.	Code	Name	Chart
1.	12		5,330	12	Orange	Default
2.	2		1,876		R214 G111 B21	
3.	14		1,382	14	Brown	Default
4.	11		165	11	Dark Red	Default
5.	8		9,314	8	Black	Default
6.	9		80	9	White	Default



Production Worksheet

Wilcom EmbroideryStudio - Designing



Design: **4**

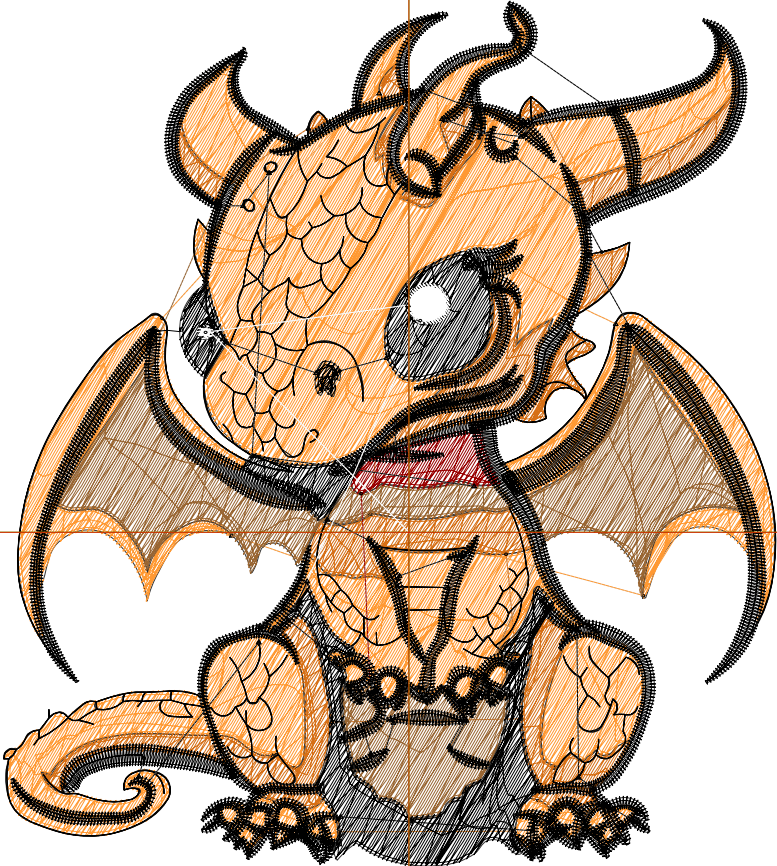
Title:

Stitches: 23,936
 Height: 4.51 in
 Width: 4.02 in
 Colors: 6
 Colorway: Colorway 1
 Zoom: 1:1

Machine format: Tajima
 Color changes: 5
 Stops: 6
 Trims: 56
 Appliqués: 0
 Left: 53.6 mm
 Right: 48.5 mm
 Up: 70.3 mm
 Down: 44.3 mm
 EndX: 0.00 in
 EndY: 0.00 in
 Area: 18.14 in²
 Max stitch: 7.9 mm
 Min stitch: 0.0 mm
 Max jump: 6.9 mm
 Total thread: 379.48ft
 Total bobbin: 130.64ft

Stop Sequence:

#	N#	Color	St.	Code	Name	Chart
1.	12		7,427	12	Orange	Default
2.	2		2,482		R214 G111 B21	
3.	14		1,946	14	Brown	Default
4.	11		232	11	Dark Red	Default
5.	8		11,749	8	Black	Default
6.	9		98	9	White	Default



Production Worksheet

Wilcom EmbroideryStudio - Designing



Design: **5**

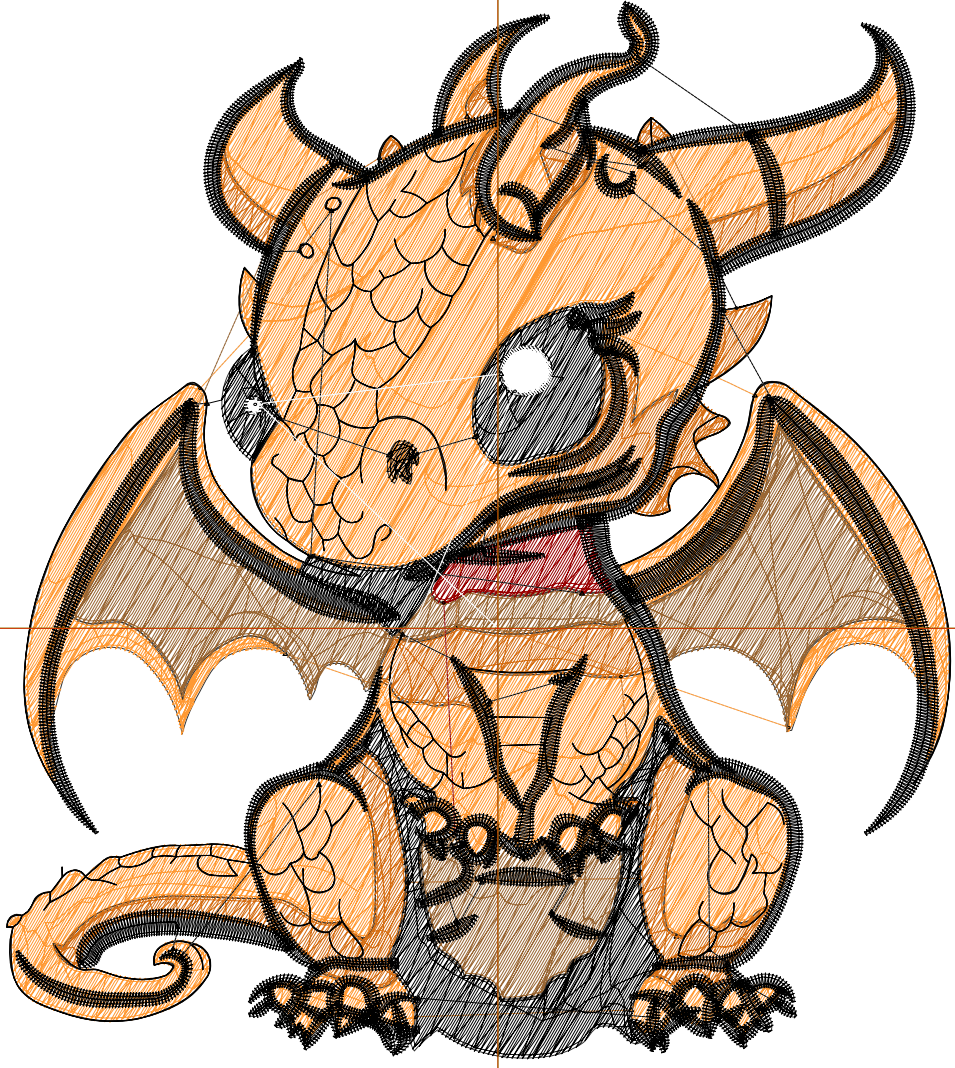
Title:

Stitches: 30,388
Height: 5.51 in
Width: 4.92 in
Colors: 6
Colorway: Colorway 1
Zoom: 1:1

Machine format: Tajima
Color changes: 5
Stops: 6
Trims: 59
Appliqués: 0
Left: 65.0 mm
Right: 59.9 mm
Up: 83.0 mm
Down: 57.0 mm
EndX: 0.00 in
EndY: 0.00 in
Area: 27.08 in²
Max stitch: 9.6 mm
Min stitch: 0.0 mm
Max jump: 6.9 mm
Total thread: 511.87ft
Total bobbin: 184.01ft

Stop Sequence:

#	N#	Color	St.	Code	Name	Chart
1.	12		9,868	12	Orange	Default
2.	2		3,241		R214 G111 B21	
3.	14		2,644	14	Brown	Default
4.	11		303	11	Dark Red	Default
5.	8		14,215	8	Black	Default
6.	9		115	9	White	Default



Production Worksheet

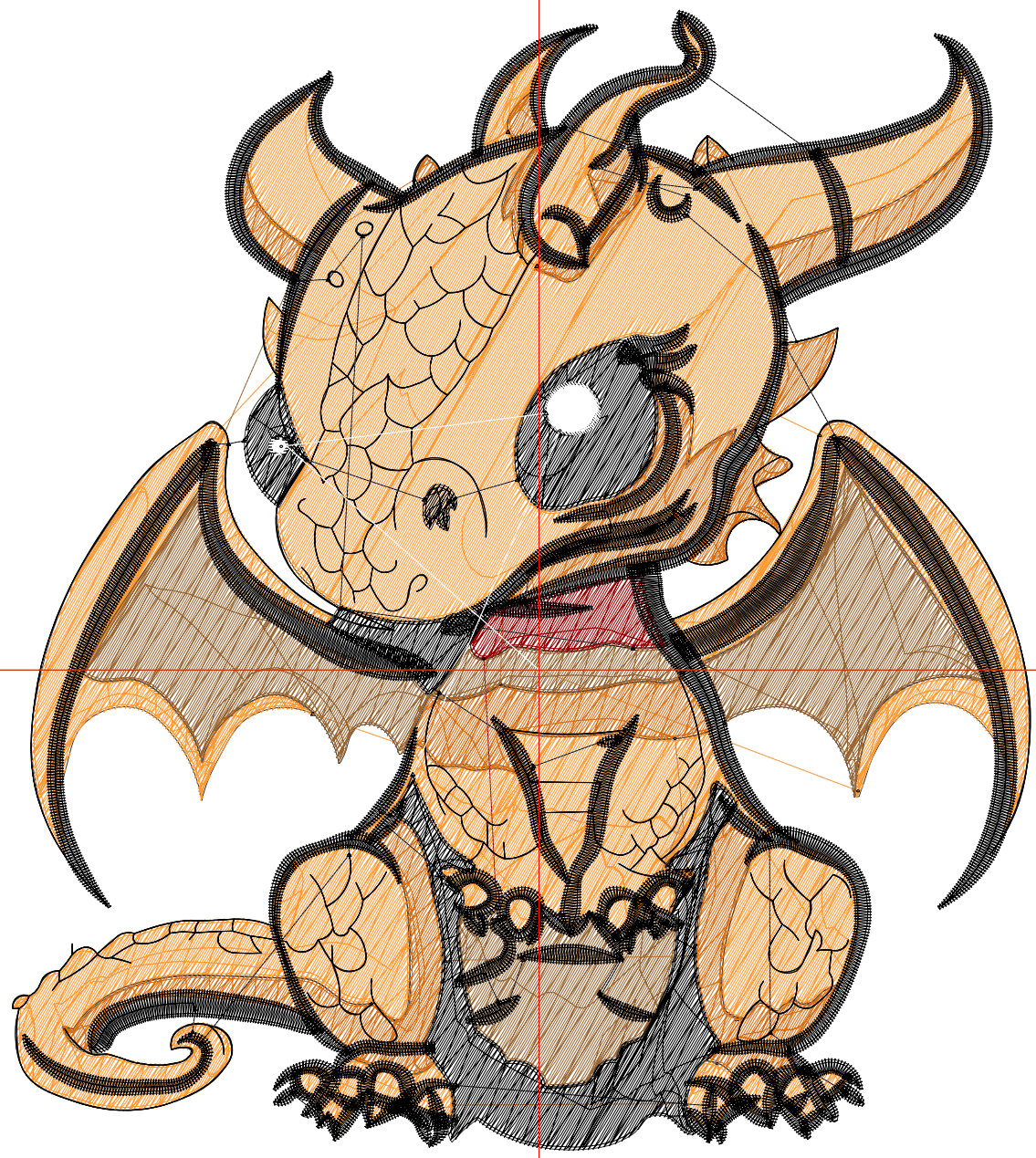
Wilcom EmbroideryStudio - Designing



Design: **6**

Title:

Stitches: 36,734
Height: 6.51 in
Width: 5.81 in
Colors: 6
Colorway: Colorway 1
Zoom: 1:1



Production Worksheet

Wilcom EmbroideryStudio - Designing



Design: **6**

Title:

Stitches: 36,734
 Height: 6.51 in
 Width: 5.81 in
 Colors: 6
 Colorway: Colorway 1
 Zoom: 1:1

Machine format: Tajima
 Color changes: 5
 Stops: 6
 Trims: 65
 Appliqués: 0
 Left: 76.3 mm
 Right: 71.2 mm
 Up: 95.7 mm
 Down: 69.7 mm
 EndX: 0.00 in
 EndY: 0.00 in
 Area 37.82 in²
 Max stitch: 11.5 mm
 Min stitch: 0.0 mm
 Max jump: 6.8 mm
 Total thread: 649.25ft
 Total bobbin: 240.74ft

Stop Sequence:

#	N#	Color	St.	Code	Name	Chart
1.	12		11,984	12	Orange	Default
2.	2		4,011		R214 G111 B21	
3.	14		3,416	14	Brown	Default
4.	11		388	11	Dark Red	Default
5.	8		16,803	8	Black	Default
6.	9		130	9	White	Default

Production Worksheet

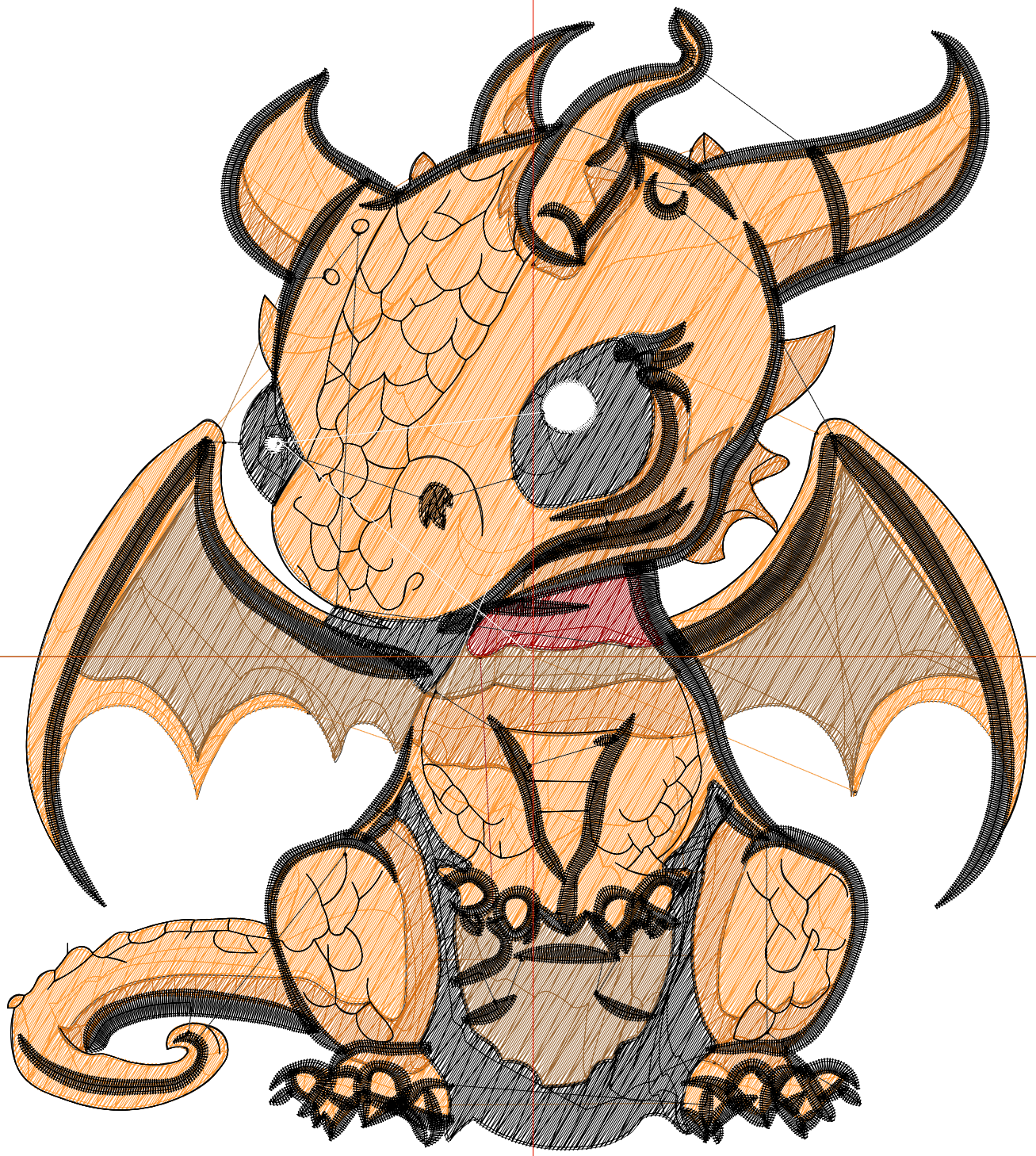
Wilcom EmbroideryStudio - Designing



Design: **7**

Title:

Stitches: 45,097
Height: 7.51 in
Width: 6.70 in
Colors: 6
Colorway: Colorway 1
Zoom: 1:1



Production Worksheet

Wilcom EmbroideryStudio - Designing



Design: **7**

Title:

Stitches: 45,097
 Height: 7.51 in
 Width: 6.70 in
 Colors: 6
 Colorway: Colorway 1
 Zoom: 1:1

Machine format: Tajima
 Color changes: 5
 Stops: 6
 Trims: 67
 Appliqués: 0
 Left: 87.7 mm
 Right: 82.6 mm
 Up: 108.4 mm
 Down: 82.4 mm
 EndX: 0.00 in
 EndY: 0.00 in
 Area 50.34 in²
 Max stitch: 10.5 mm
 Min stitch: 0.0 mm
 Max jump: 7.0 mm
 Total thread: 840.58ft
 Total bobbin: 321.60ft

Stop Sequence:

#	N#	Color	St.	Code	Name	Chart
1.	12		15,859	12	Orange	Default
2.	2		4,877		R214 G111 B21	
3.	14		4,285	14	Brown	Default
4.	11		473	11	Dark Red	Default
5.	8		19,453	8	Black	Default
6.	9		148	9	White	Default