

Production Worksheet

Wilcom EmbroideryStudio - Designing



Design: **3**

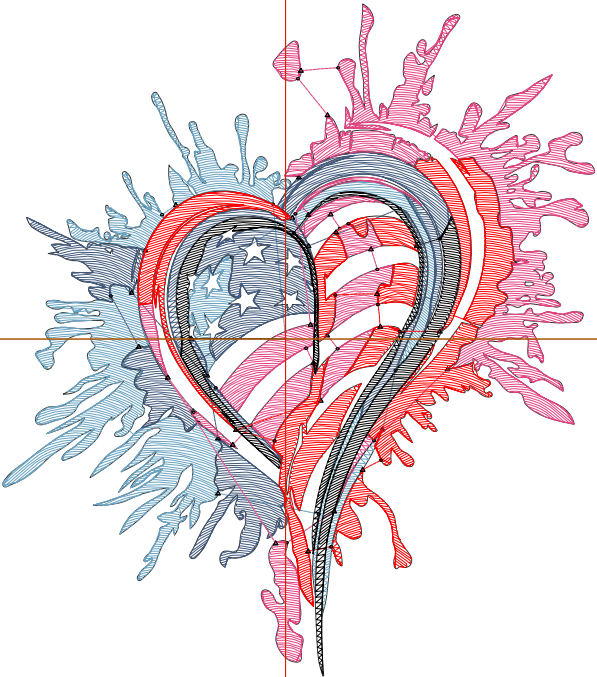
Title:

Stitches: 10,903
Height: 3.48 in
Width: 3.08 in
Colors: 5
Colorway: Colorway 1
Zoom: 1:1

Machine format: Tajima
Color changes: 4
Stops: 5
Trims: 34
Appliqués: 0
Left: 37.4 mm
Right: 40.9 mm
Up: 44.1 mm
Down: 44.3 mm
EndX: 0.00 in
EndY: 0.00 in
Area: 10.73 in²
Max stitch: 11.2 mm
Min stitch: 0.0 mm
Max jump: 6.0 mm
Total thread: 122.64ft
Total bobbin: 29.31ft

Stop Sequence:

#	N#	Color	St.	Code	Name	Chart
1.	1		2,557		R107 G164 B194	
2.	2		1,932		R66 G90 B125	
3.	3		2,942		R227 G68 B129	
4.	4		2,304		R255 G0 B0	
5.	8		1,166	8	Black	Default



Production Worksheet

Wilcom EmbroideryStudio - Designing



Design: **4**

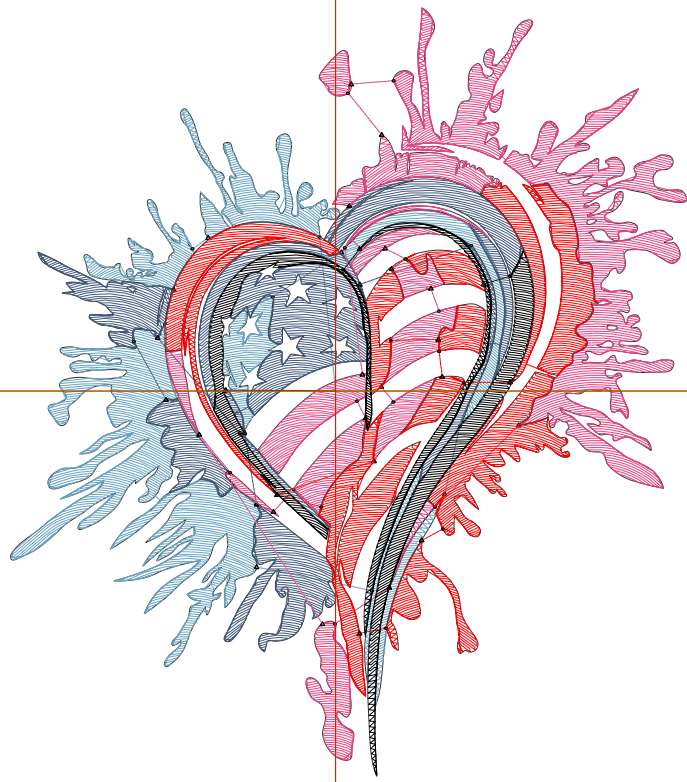
Title:

Stitches: 12,985
 Height: 3.99 in
 Width: 3.52 in
 Colors: 5
 Colorway: Colorway 1
 Zoom: 1:1

Machine format: Tajima
 Color changes: 4
 Stops: 5
 Trims: 34
 Appliqués: 0
 Left: 43.0 mm
 Right: 46.5 mm
 Up: 50.7 mm
 Down: 50.8 mm
 EndX: 0.00 in
 EndY: 0.00 in
 Area: 14.07 in²
 Max stitch: 9.5 mm
 Min stitch: 0.0 mm
 Max jump: 6.8 mm
 Total thread: 148.90ft
 Total bobbin: 36.77ft

Stop Sequence:

#	N#	Color	St.	Code	Name	Chart
1.	1		3,079	R107	G164 B194	
2.	2		2,321	R66	G90 B125	
3.	3		3,459	R227	G68 B129	
4.	4		2,682	R255	G0 B0	
5.	8		1,442	8	Black	Default



Production Worksheet

Wilcom EmbroideryStudio - Designing



Design: **4**

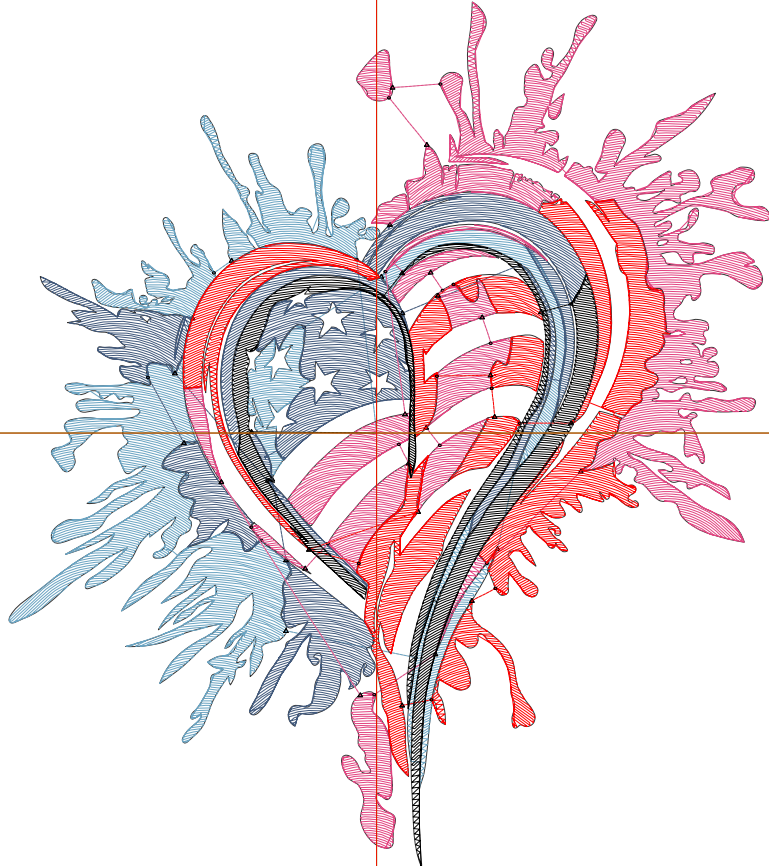
Title:

Stitches: 15,130
 Height: 4.50 in
 Width: 3.96 in
 Colors: 5
 Colorway: Colorway 1
 Zoom: 1:1

Machine format: Tajima
 Color changes: 4
 Stops: 5
 Trims: 34
 Appliqués: 0
 Left: 48.6 mm
 Right: 52.0 mm
 Up: 57.0 mm
 Down: 57.3 mm
 EndX: 0.00 in
 EndY: 0.00 in
 Area: 17.81 in²
 Max stitch: 10.7 mm
 Min stitch: 0.0 mm
 Max jump: 5.7 mm
 Total thread: 176.08ft
 Total bobbin: 44.54ft

Stop Sequence:

#	N#	Color	St.	Code	Name	Chart
1.	1		3,532	R107	G164 B194	
2.	2		2,699	R66	G90 B125	
3.	3		4,099	R227	G68 B129	
4.	4		3,160	R255	G0 B0	
5.	8		1,638	8	Black	Default



Production Worksheet

Wilcom EmbroideryStudio - Designing



Design: **5**

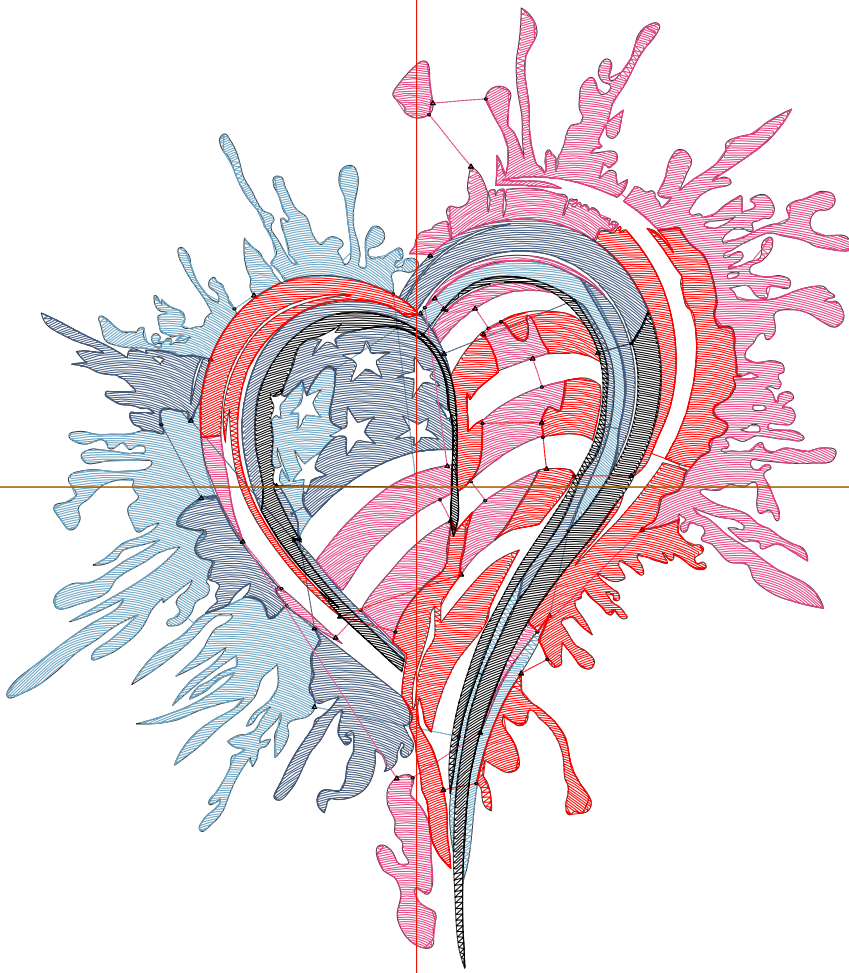
Title:

Stitches: 17,520
 Height: 4.99 in
 Width: 4.40 in
 Colors: 5
 Colorway: Colorway 1
 Zoom: 1:1

Machine format: Tajima
 Color changes: 4
 Stops: 5
 Trims: 35
 Appliqués: 0
 Left: 54.2 mm
 Right: 57.6 mm
 Up: 63.2 mm
 Down: 63.6 mm
 EndX: 0.00 in
 EndY: 0.00 in
 Area: 21.99 in²
 Max stitch: 11.9 mm
 Min stitch: 0.0 mm
 Max jump: 6.4 mm
 Total thread: 208.28ft
 Total bobbin: 54.33ft

Stop Sequence:

#	N#	Color	St.	Code	Name	Chart
1.	1		4,112	R107	G164 B194	
2.	2		3,170	R66	G90 B125	
3.	3		4,670	R227	G68 B129	
4.	4		3,699	R255	G0 B0	
5.	8		1,867	8	Black	Default



Production Worksheet

Wilcom EmbroideryStudio - Designing



Design: **5**

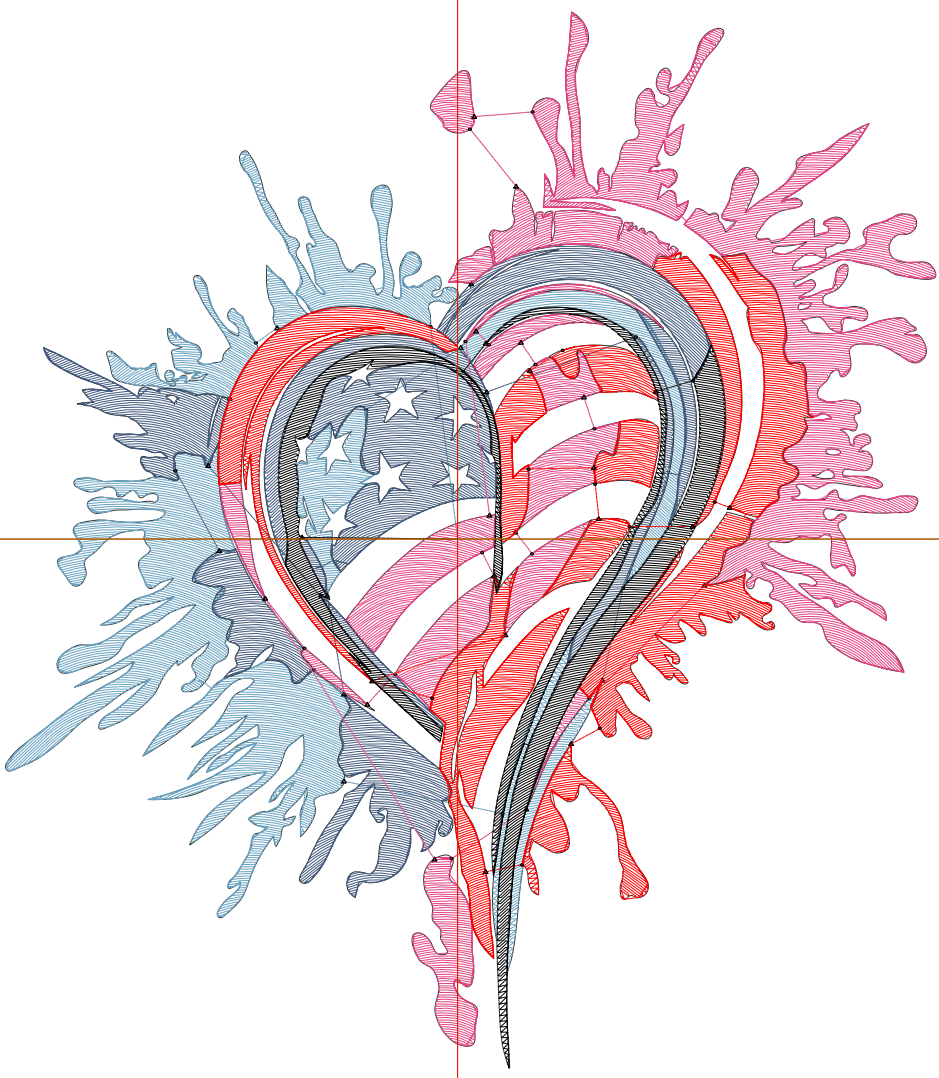
Title:

Stitches: 20,178
 Height: 5.50 in
 Width: 4.84 in
 Colors: 5
 Colorway: Colorway 1
 Zoom: 1:1

Machine format: Tajima
 Color changes: 4
 Stops: 5
 Trims: 36
 Appliqués: 0
 Left: 59.8 mm
 Right: 63.2 mm
 Up: 69.7 mm
 Down: 70.0 mm
 EndX: 0.00 in
 EndY: 0.00 in
 Area: 26.64 in²
 Max stitch: 6.9 mm
 Min stitch: 0.0 mm
 Max jump: 6.9 mm
 Total thread: 243.25ft
 Total bobbin: 64.71ft

Stop Sequence:

#	N#	Color	St.	Code	Name	Chart
1.	1		4,714	R107	G164 B194	
2.	2		3,584	R66	G90 B125	
3.	3		5,498	R227	G68 B129	
4.	4		4,280	R255	G0 B0	
5.	8		2,100	8	Black	Default



Production Worksheet

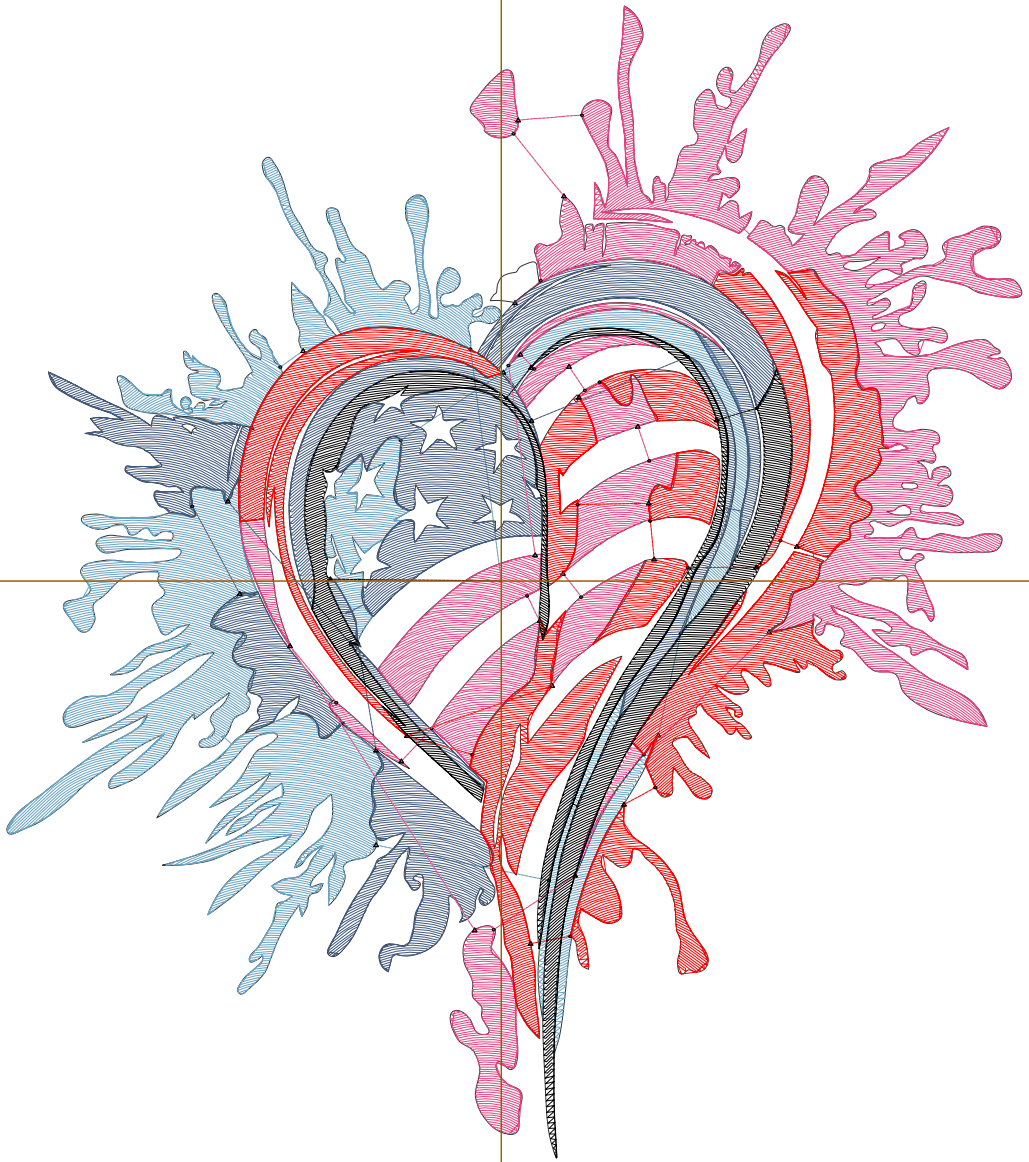
Wilcom EmbroideryStudio - Designing



Design: **6**

Title:

Stitches: 22,657
Height: 6.00 in
Width: 5.28 in
Colors: 5
Colorway: Colorway 1
Zoom: 1:1



1

1

2

2

Production Worksheet

Wilcom EmbroideryStudio - Designing



Design: **6**

Title:

Stitches: 22,657
 Height: 6.00 in
 Width: 5.28 in
 Colors: 5
 Colorway: Colorway 1
 Zoom: 1:1

Machine format: Tajima
 Color changes: 4
 Stops: 5
 Trims: 36
 Appliqués: 0
 Left: 65.4 mm
 Right: 68.9 mm
 Up: 76.1 mm
 Down: 76.3 mm
 EndX: 0.00 in
 EndY: 0.00 in
 Area 31.70 in²
 Max stitch: 6.4 mm
 Min stitch: 0.0 mm
 Max jump: 6.4 mm
 Total thread: 278.57ft
 Total bobbin: 76.01ft

Stop Sequence:

#	N#	Color	St.	Code	Name	Chart
1.	1		5,316		R107 G164 B194	
2.	2		4,079		R66 G90 B125	
3.	3		5,955		R227 G68 B129	
4.	4		4,866		R255 G0 B0	
5.	8		2,439	8	Black	Default

Production Worksheet

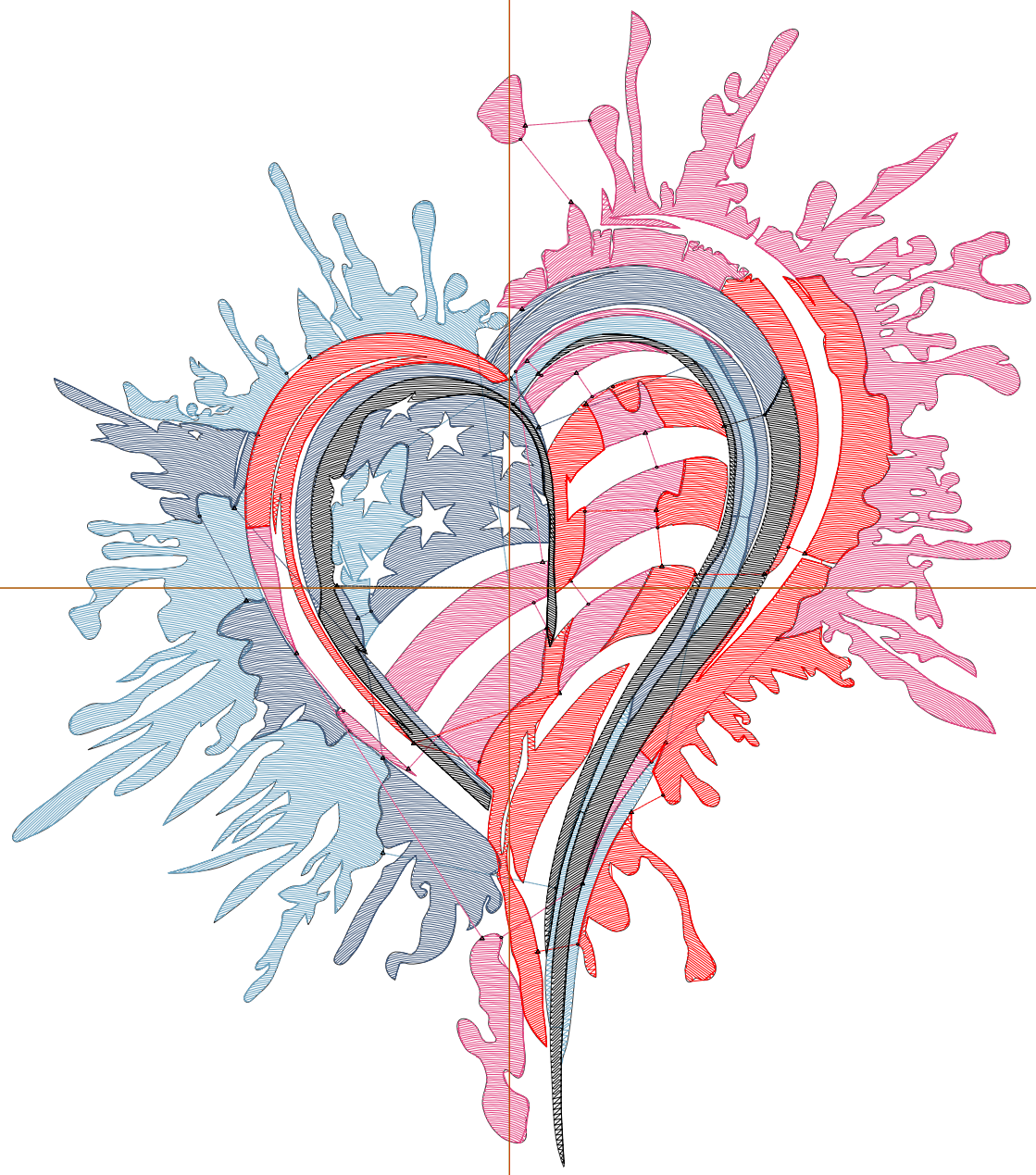
Wilcom EmbroideryStudio - Designing



Design: **6**

Title:

Stitches: 25,627
Height: 6.48 in
Width: 5.72 in
Colors: 5
Colorway: Colorway 1
Zoom: 1:1



1

1

2

2

Production Worksheet

Wilcom EmbroideryStudio - Designing



Design: **6**

Title:

Stitches: 25,627
 Height: 6.48 in
 Width: 5.72 in
 Colors: 5
 Colorway: Colorway 1
 Zoom: 1:1

Machine format: Tajima
 Color changes: 4
 Stops: 5
 Trims: 37
 Appliqués: 0
 Left: 71.0 mm
 Right: 74.4 mm
 Up: 82.4 mm
 Down: 82.2 mm
 EndX: 0.00 in
 EndY: 0.00 in
 Area 37.09 in²
 Max stitch: 6.9 mm
 Min stitch: 0.0 mm
 Max jump: 6.9 mm
 Total thread: 317.51ft
 Total bobbin: 87.53ft

Stop Sequence:

#	N#	Color	St.	Code	Name	Chart
1.	1		6,051		R107 G164 B194	
2.	2		4,581		R66 G90 B125	
3.	3		6,903		R227 G68 B129	
4.	4		5,404		R255 G0 B0	
5.	8		2,686	8	Black	Default

Production Worksheet

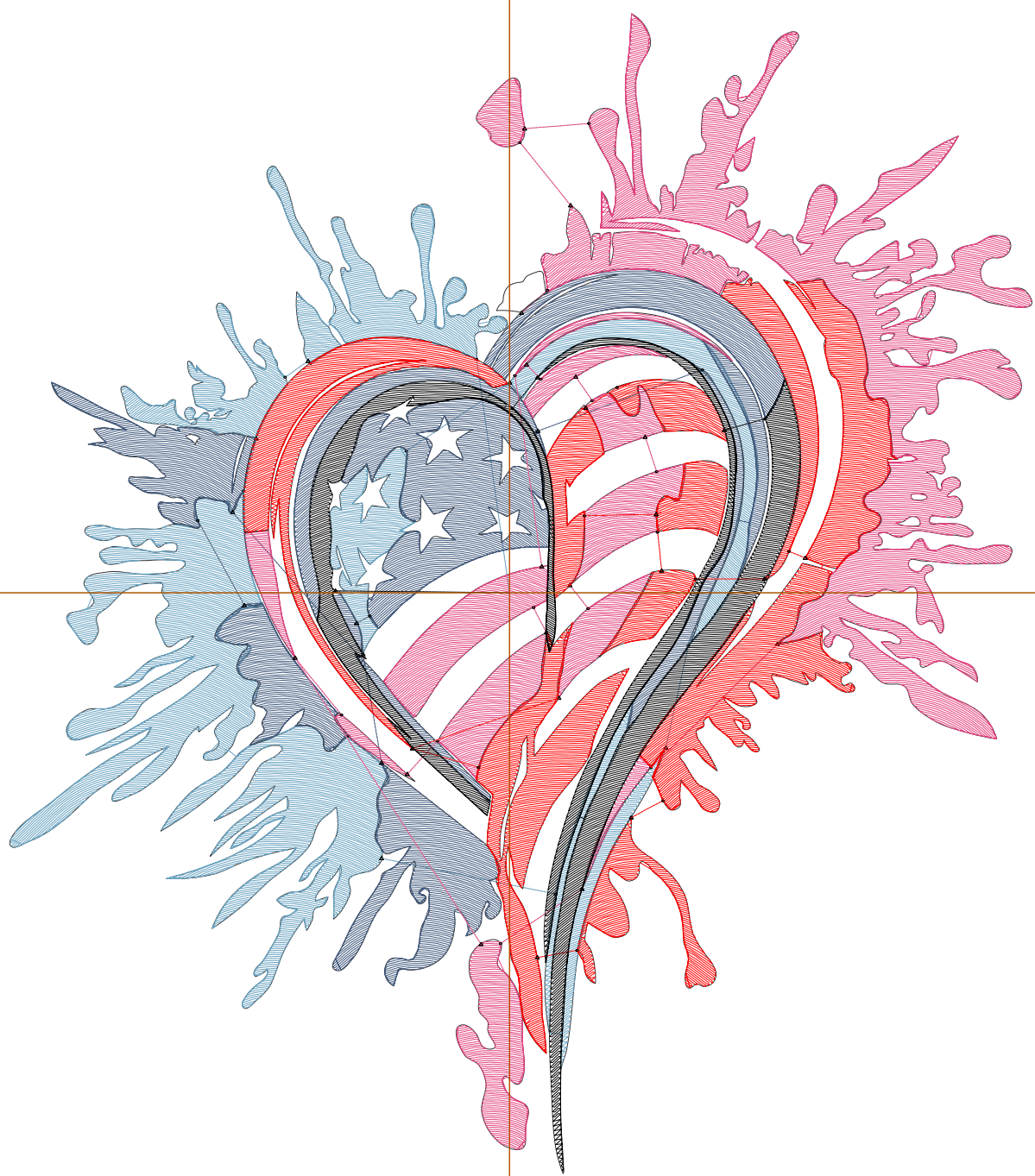
Wilcom EmbroideryStudio - Designing



Design: **7**

Title:

Stitches: 28,256
Height: 6.98 in
Width: 6.16 in
Colors: 5
Colorway: Colorway 1
Zoom: 1:1



1

1

2

2

Production Worksheet

Wilcom EmbroideryStudio - Designing



Design: **7**

Title:

Stitches: 28,256
 Height: 6.98 in
 Width: 6.16 in
 Colors: 5
 Colorway: Colorway 1
 Zoom: 1:1

Machine format: Tajima
 Color changes: 4
 Stops: 5
 Trims: 37
 Appliqués: 0
 Left: 76.5 mm
 Right: 80.0 mm
 Up: 88.8 mm
 Down: 88.6 mm
 EndX: 0.00 in
 EndY: 0.00 in
 Area 43.05 in²
 Max stitch: 6.7 mm
 Min stitch: 0.0 mm
 Max jump: 6.7 mm
 Total thread: 356.21ft
 Total bobbin: 100.24ft

Stop Sequence:

#	N#	Color	St.	Code	Name	Chart
1.	1		6,659		R107 G164 B194	
2.	2		5,118		R66 G90 B125	
3.	3		7,491		R227 G68 B129	
4.	4		5,917		R255 G0 B0	
5.	8		3,069	8	Black	Default

Production Worksheet

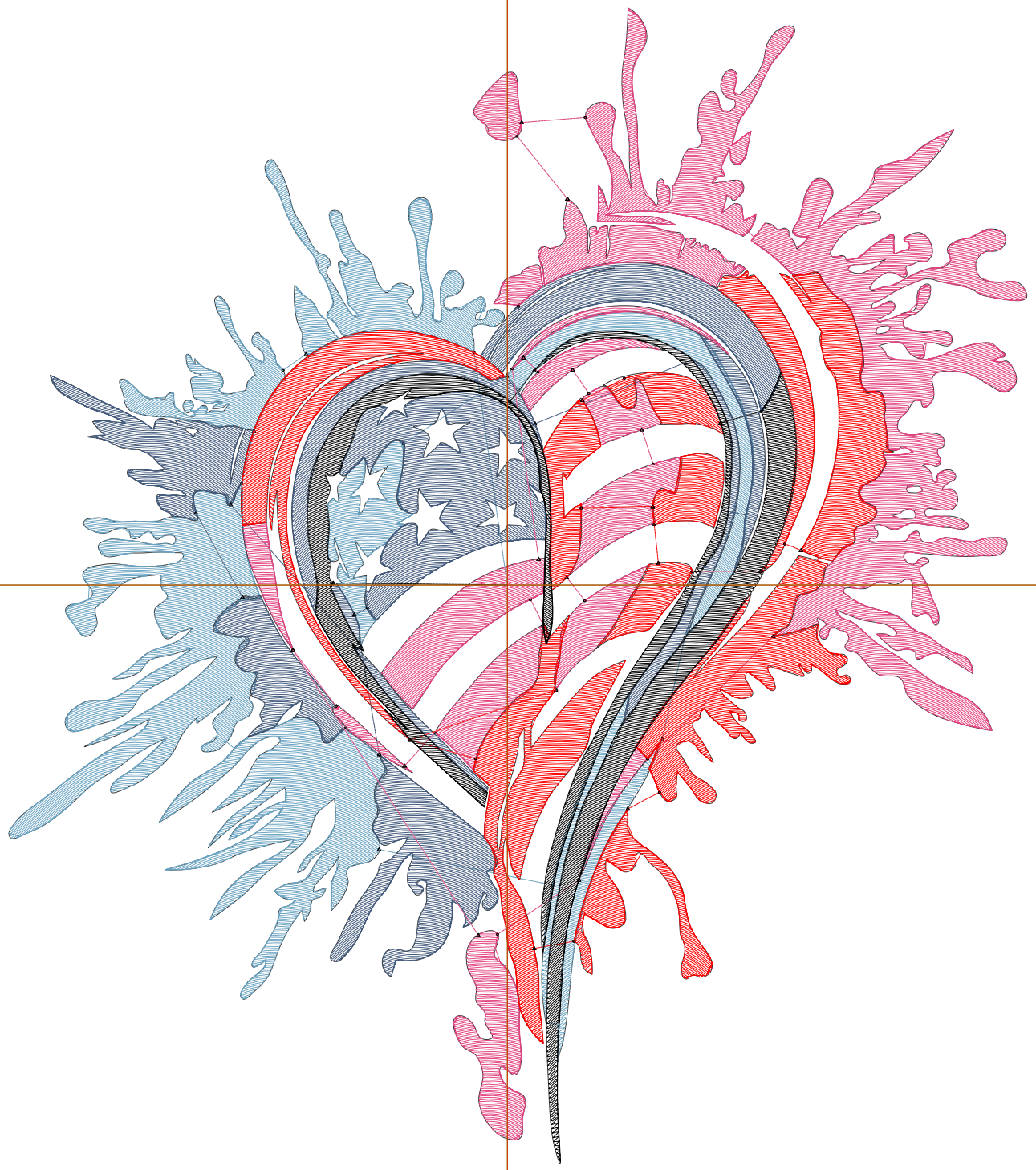
Wilcom EmbroideryStudio - Designing



Design: **7**

Title:

Stitches: 31,105
Height: 7.49 in
Width: 6.60 in
Colors: 5
Colorway: Colorway 1
Zoom: 1:1



1

1

2

2

Production Worksheet

Wilcom EmbroideryStudio - Designing



Design: **7**

Title:

Stitches: 31,105
 Height: 7.49 in
 Width: 6.60 in
 Colors: 5
 Colorway: Colorway 1
 Zoom: 1:1

Machine format: Tajima
 Color changes: 4
 Stops: 5
 Trims: 37
 Appliqués: 0
 Left: 82.2 mm
 Right: 85.6 mm
 Up: 95.1 mm
 Down: 95.1 mm
 EndX: 0.00 in
 EndY: 0.00 in
 Area 49.44 in²
 Max stitch: 6.7 mm
 Min stitch: 0.0 mm
 Max jump: 6.7 mm
 Total thread: 396.81ft
 Total bobbin: 113.23ft

Stop Sequence:

#	N#	Color	St.	Code	Name	Chart
1.	1		7,294		R107 G164 B194	
2.	2		5,668		R66 G90 B125	
3.	3		8,289		R227 G68 B129	
4.	4		6,579		R255 G0 B0	
5.	8		3,273	8	Black	Default