

# Production Worksheet

Wilcom EmbroideryStudio - Designing



Design: **4**

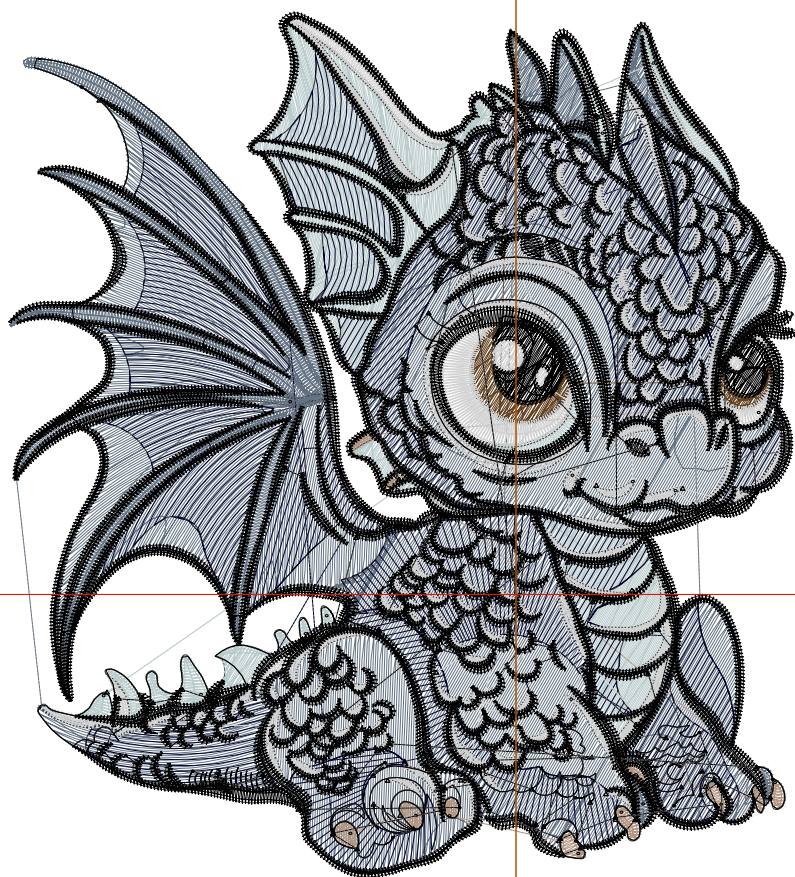
Title:

Stitches: 45,325  
Height: 4.51 in  
Width: 4.11 in  
Colors: 7  
Colorway: Colorway 1  
Zoom: 1:1

Machine format: Tajima  
Color changes: 6  
Stops: 7  
Trims: 187  
Appliqués: 0  
Left: 67.2 mm  
Right: 37.2 mm  
Up: 77.1 mm  
Down: 37.5 mm  
EndX: 0.00 in  
EndY: 0.00 in  
Area: 18.54 in<sup>2</sup>  
Max stitch: 7.9 mm  
Min stitch: 0.0 mm  
Max jump: 6.9 mm  
Total thread: 621.54ft  
Total bobbin: 190.72ft

### Stop Sequence:

#	N#	Color	St.	Code	Name	Chart
1.	1		8,979		R99 G114 B130	
2.	5		3,450		R186 G203 B204	
3.	14		407		R99 G66 B33	
4.	12		505		R179 G149 B130	
5.	10		3,087		R0 G0 B43	
6.	9		6,556		R209 G209 B209	
7.	8		22,339		R0 G0 B0	



# Production Worksheet

Wilcom EmbroideryStudio - Designing



Design: **5**

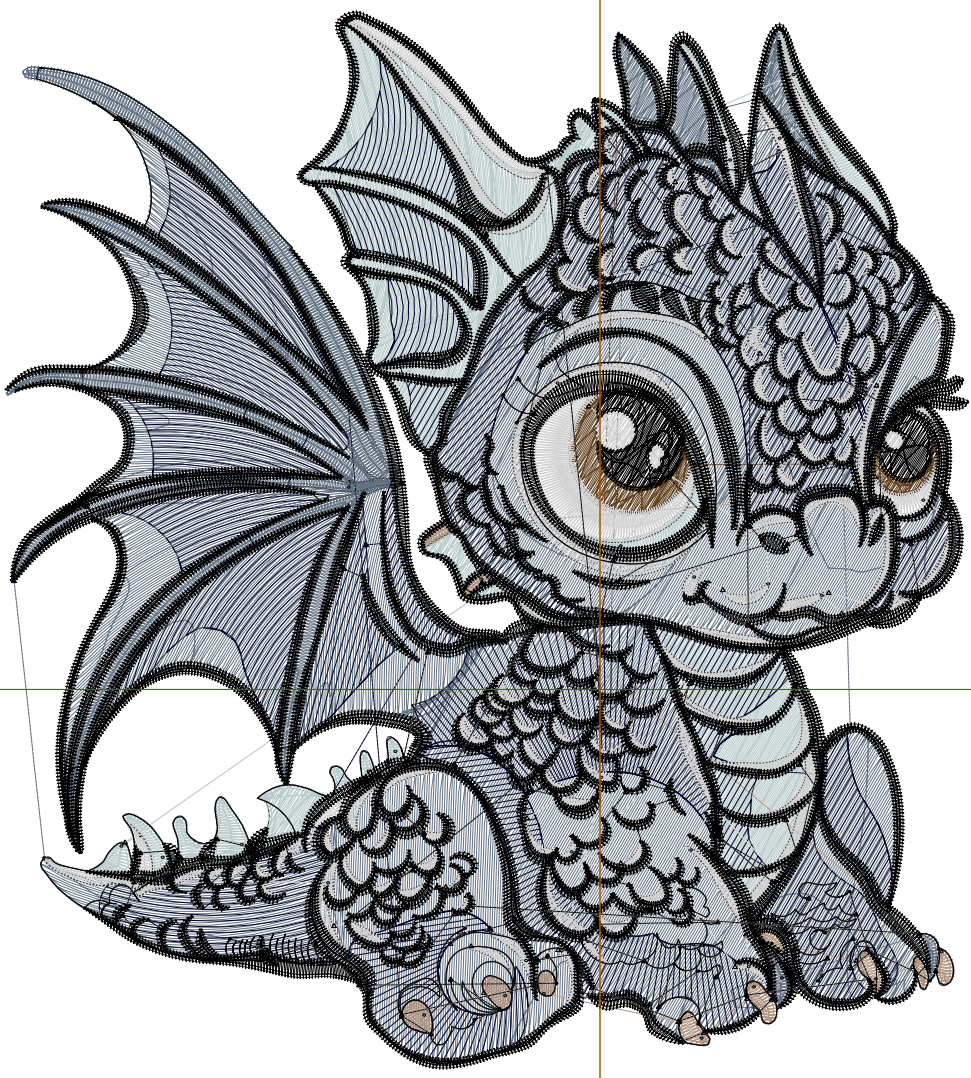
Title:

Stitches: 56,767  
Height: 5.51 in  
Width: 5.02 in  
Colors: 7  
Colorway: Colorway 1  
Zoom: 1:1

Machine format: Tajima  
Color changes: 6  
Stops: 7  
Trims: 215  
Appliqués: 0  
Left: 78.7 mm  
Right: 48.8 mm  
Up: 89.8 mm  
Down: 50.2 mm  
EndX: 0.00 in  
EndY: 0.00 in  
Area: 27.67 in<sup>2</sup>  
Max stitch: 9.7 mm  
Min stitch: 0.0 mm  
Max jump: 6.9 mm  
Total thread: 827.47ft  
Total bobbin: 268.26ft

Stop Sequence:

#	N#	Color	St.	Code	Name	Chart
1.	1		12,286		R99 G114 B130	
2.	5		4,703		R186 G203 B204	
3.	14		490		R99 G66 B33	
4.	12		579		R179 G149 B130	
5.	10		4,154		R0 G0 B43	
6.	9		7,779		R209 G209 B209	
7.	8		26,774		R0 G0 B0	



# Production Worksheet

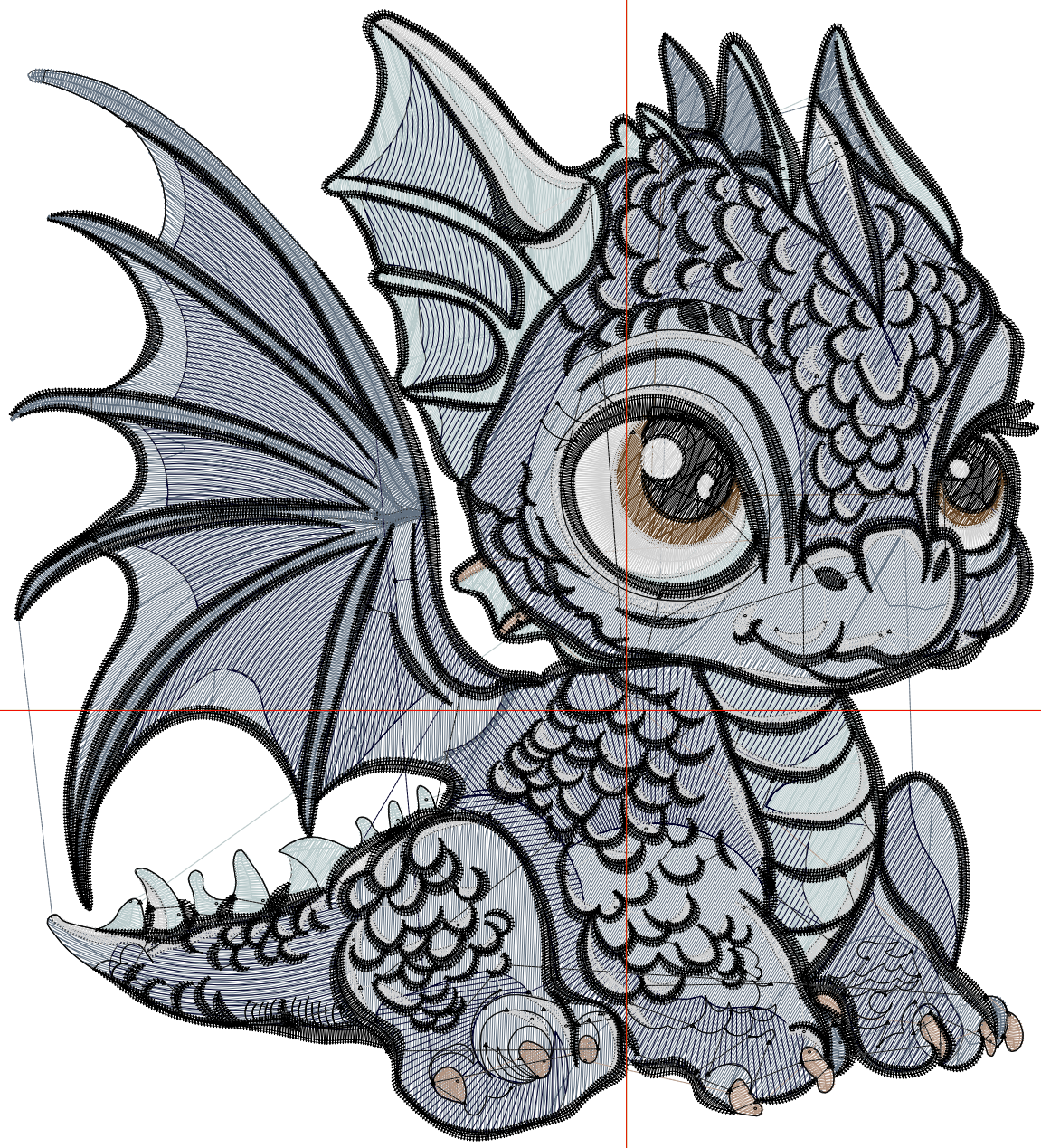
Wilcom EmbroideryStudio - Designing



Design: **6**

Title:

Stitches: 68,921  
Height: 6.51 in  
Width: 5.93 in  
Colors: 7  
Colorway: Colorway 1  
Zoom: 1:1



# Production Worksheet

Wilcom EmbroideryStudio - Designing



Design: **6**

Title:

Stitches: 68,921  
 Height: 6.51 in  
 Width: 5.93 in  
 Colors: 7  
 Colorway: Colorway 1  
 Zoom: 1:1

Machine format: Tajima  
 Color changes: 6  
 Stops: 7  
 Trims: 242  
 Appliqués: 0  
 Left: 90.3 mm  
 Right: 60.3 mm  
 Up: 102.5 mm  
 Down: 62.9 mm  
 EndX: 0.00 in  
 EndY: 0.00 in  
 Area 38.62 in<sup>2</sup>  
 Max stitch: 11.4 mm  
 Min stitch: 0.0 mm  
 Max jump: 7.0 mm  
 Total thread: 1061.04ft  
 Total bobbin: 359.41ft

Stop Sequence:

#	N#	Color	St.	Code	Name	Chart
1.	1		16,043		R99 G114 B130	
2.	5		6,077		R186 G203 B204	
3.	14		618		R99 G66 B33	
4.	12		664		R179 G149 B130	
5.	10		5,271		R0 G0 B43	
6.	9		9,083		R209 G209 B209	
7.	8		31,163		R0 G0 B0	

# Production Worksheet

Wilcom EmbroideryStudio - Designing



Design: 7

Title:

Stitches: 81,897  
Height: 7.51 in  
Width: 6.84 in  
Colors: 7  
Colorway: Colorway 1  
Zoom: 1:1



# Production Worksheet

Wilcom EmbroideryStudio - Designing



Design: **7**

Title:

Stitches: 81,897  
 Height: 7.51 in  
 Width: 6.84 in  
 Colors: 7  
 Colorway: Colorway 1  
 Zoom: 1:1

Machine format: Tajima  
 Color changes: 6  
 Stops: 7  
 Trims: 262  
 Appliqués: 0  
 Left: 101.8 mm  
 Right: 71.9 mm  
 Up: 115.2 mm  
 Down: 75.6 mm  
 EndX: 0.00 in  
 EndY: 0.00 in  
 Area 51.39 in<sup>2</sup>  
 Max stitch: 7.5 mm  
 Min stitch: 0.0 mm  
 Max jump: 7.0 mm  
 Total thread: 1322.29ft  
 Total bobbin: 463.77ft

Stop Sequence:

#	N#	Color	St.	Code	Name	Chart
1.	1		20,292		R99 G114 B130	
2.	5		7,577		R186 G203 B204	
3.	14		742		R99 G66 B33	
4.	12		747		R179 G149 B130	
5.	10		6,615		R0 G0 B43	
6.	9		10,284		R209 G209 B209	
7.	8		35,638		R0 G0 B0	