

Production Worksheet

Wilcom EmbroideryStudio - Designing



Design: **3**

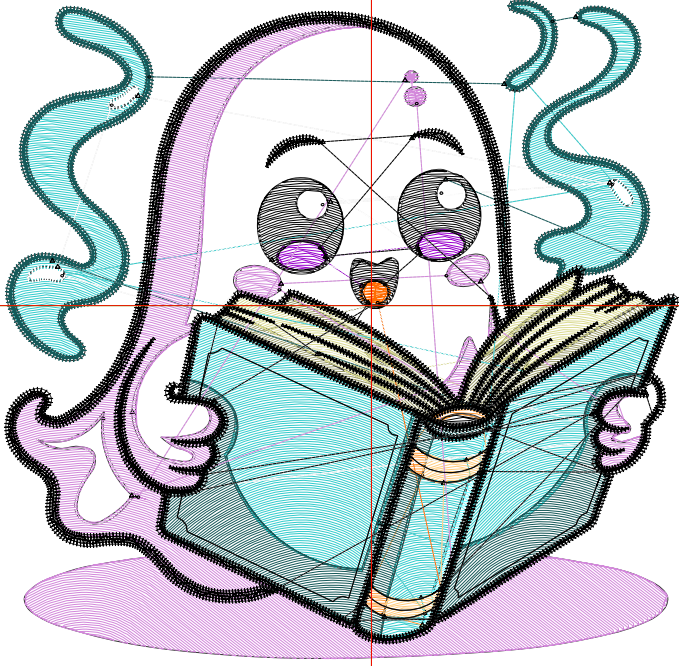
Title:

Stitches: 22,323
 Height: 3.43 in
 Width: 3.51 in
 Colors: 12
 Colorway: Colorway 1
 Zoom: 1:1

Machine format: Tajima
 Color changes: 11
 Stops: 12
 Trims: 65
 Appliqués: 0
 Left: 48.5 mm
 Right: 40.7 mm
 Up: 40.5 mm
 Down: 46.7 mm
 EndX: 0.00 in
 EndY: 0.00 in
 Area: 12.06 in²
 Max stitch: 7.0 mm
 Min stitch: 0.0 mm
 Max jump: 7.0 mm
 Total thread: 292.10ft
 Total bobbin: 83.97ft

Stop Sequence:

#	N#	Color	St.	Code	Name	Chart
1.	19		614	19	Khaki	Default
2.	2		664		R219 G219 B146	
3.	5		3,698	5	Aqua	Default
4.	4		167		R115 G250 B255	
5.	12		106	12	Orange	Default
6.	16		149	16	Sand	Default
7.	6		53		R255 G107 B1	
8.	13		129	13	Purple	Default
9.	9		2,811	9	White	Default
10.	3		3,617		R22 G89 B89	
11.	7		3,845		R211 G136 B219	
12.	8		6,468	8	Black	Default



Production Worksheet

Wilcom EmbroideryStudio - Designing



Design: **4**

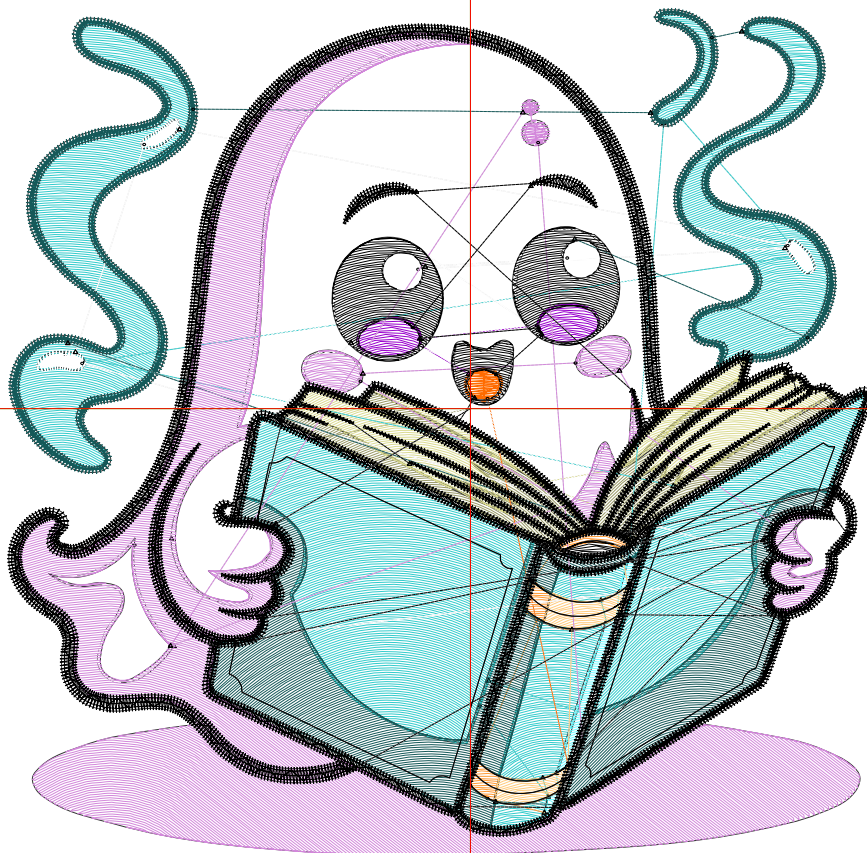
Title:

Stitches: 31,652
 Height: 4.41 in
 Width: 4.51 in
 Colors: 12
 Colorway: Colorway 1
 Zoom: 1:1

Machine format: Tajima
 Color changes: 11
 Stops: 12
 Trims: 67
 Appliqués: 0
 Left: 61.2 mm
 Right: 53.4 mm
 Up: 52.9 mm
 Down: 59.1 mm
 EndX: 0.00 in
 EndY: 0.00 in
 Area: 19.91 in²
 Max stitch: 7.5 mm
 Min stitch: 0.0 mm
 Max jump: 7.0 mm
 Total thread: 432.93ft
 Total bobbin: 131.14ft

Stop Sequence:

#	N#	Color	St.	Code	Name	Chart
1.	19		952	19	Khaki	Default
2.	2		934		R219 G219 B146	
3.	5		5,677	5	Aqua	Default
4.	4		246		R115 G250 B255	
5.	12		149	12	Orange	Default
6.	16		207	16	Sand	Default
7.	6		66		R255 G107 B1	
8.	13		172	13	Purple	Default
9.	9		4,208	9	White	Default
10.	3		4,930		R22 G89 B89	
11.	7		5,761		R211 G136 B219	
12.	8		8,348	8	Black	Default



Production Worksheet

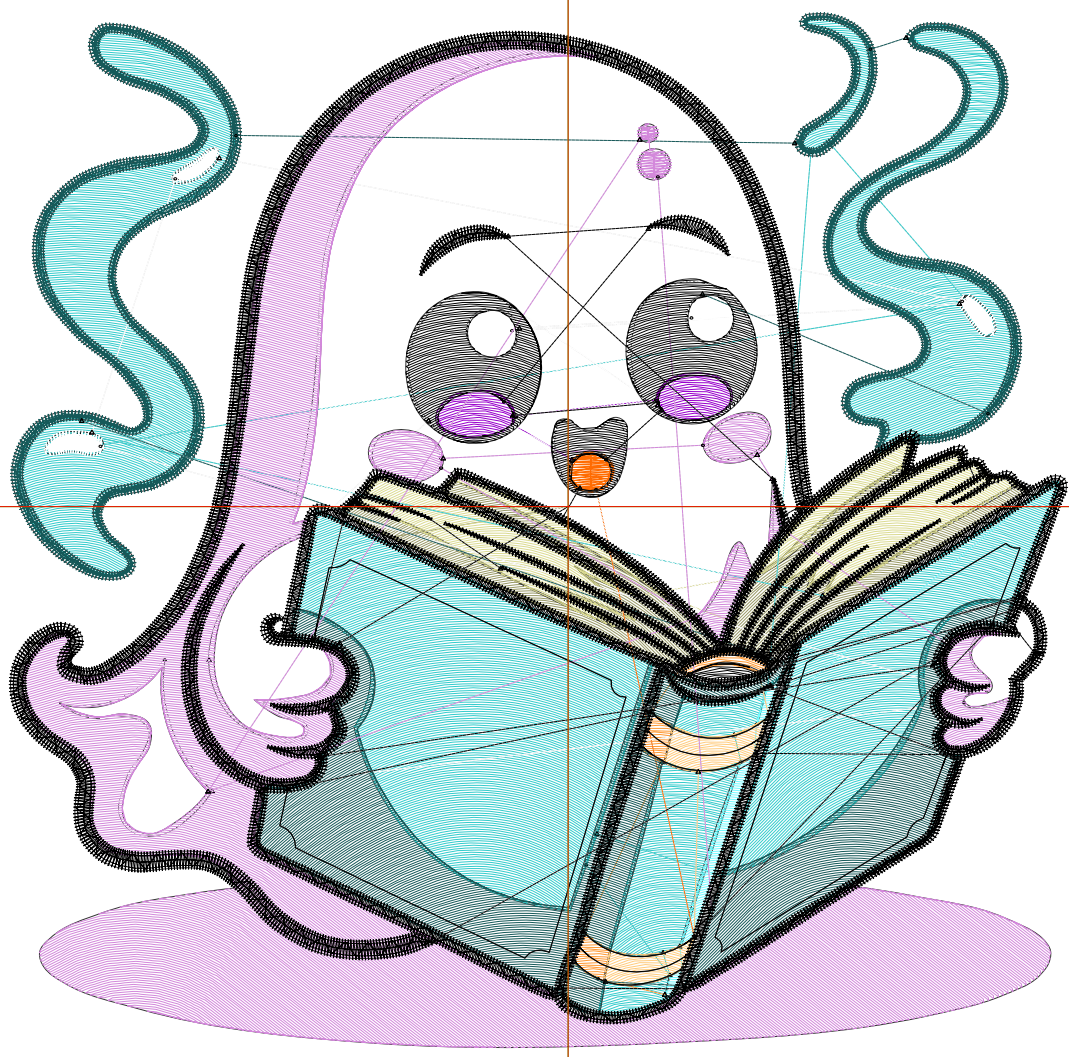
Wilcom EmbroideryStudio - Designing



Design: **5**

Title:

Stitches: 42,032
Height: 5.39 in
Width: 5.51 in
Colors: 12
Colorway: Colorway 1
Zoom: 1:1



Production Worksheet

Wilcom EmbroideryStudio - Designing



Design: **5**

Title:

Stitches: 42,032
 Height: 5.39 in
 Width: 5.51 in
 Colors: 12
 Colorway: Colorway 1
 Zoom: 1:1

Machine format: Tajima
 Color changes: 11
 Stops: 12
 Trims: 71
 Appliqués: 0
 Left: 73.9 mm
 Right: 66.1 mm
 Up: 65.4 mm
 Down: 71.5 mm
 EndX: 0.00 in
 EndY: 0.00 in
 Area 29.71 in²
 Max stitch: 8.9 mm
 Min stitch: 0.0 mm
 Max jump: 6.9 mm
 Total thread: 596.06ft
 Total bobbin: 187.45ft

Stop Sequence:

#	N#	Color	St.	Code	Name	Chart
1.	19		1,207	19	Khaki	Default
2.	2		1,272		R219 G219 B146	
3.	5		7,944	5	Aqua	Default
4.	4		308		R115 G250 B255	
5.	12		183	12	Orange	Default
6.	16		274	16	Sand	Default
7.	6		84		R255 G107 B1	
8.	13		234	13	Purple	Default
9.	9		5,871	9	White	Default
10.	3		6,305		R22 G89 B89	
11.	7		8,079		R211 G136 B219	
12.	8		10,269	8	Black	Default

Production Worksheet

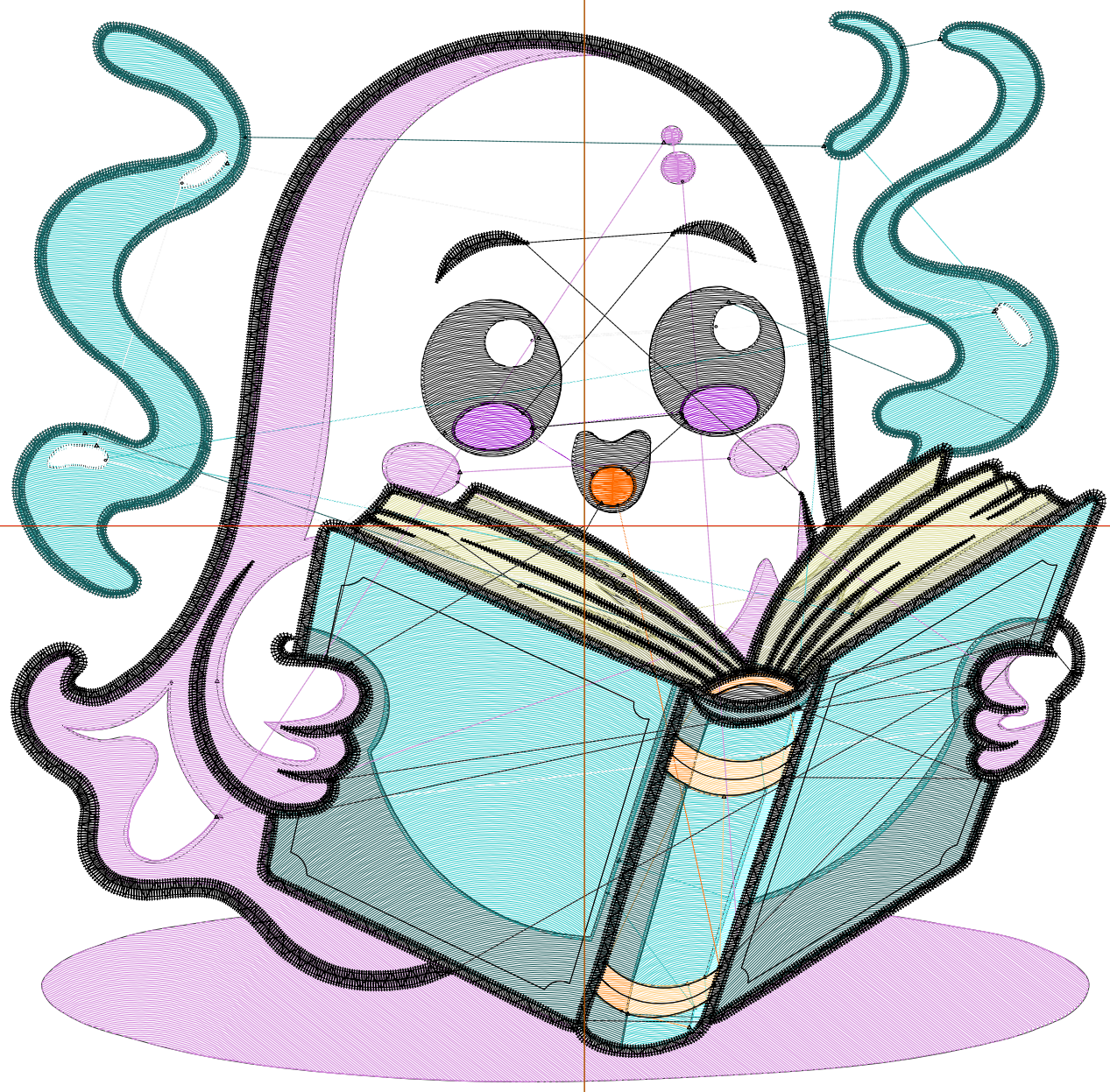
Wilcom EmbroideryStudio - Designing



Design: **6**

Title:

Stitches: 53,922
Height: 6.37 in
Width: 6.51 in
Colors: 12
Colorway: Colorway 1
Zoom: 1:1



Production Worksheet

Wilcom EmbroideryStudio - Designing



Design: **6**

Title:

Stitches: 53,922
 Height: 6.37 in
 Width: 6.51 in
 Colors: 12
 Colorway: Colorway 1
 Zoom: 1:1

Machine format: Tajima
 Color changes: 11
 Stops: 12
 Trims: 73
 Appliqués: 0
 Left: 86.6 mm
 Right: 78.8 mm
 Up: 77.8 mm
 Down: 84.0 mm
 EndX: 0.00 in
 EndY: 0.00 in
 Area 41.48 in²
 Max stitch: 10.5 mm
 Min stitch: 0.0 mm
 Max jump: 7.0 mm
 Total thread: 787.83ft
 Total bobbin: 254.86ft

Stop Sequence:

#	N#	Color	St.	Code	Name	Chart
1.	19		1,550	19	Khaki	Default
2.	2		1,633		R219 G219 B146	
3.	5		10,746	5	Aqua	Default
4.	4		366		R115 G250 B255	
5.	12		226	12	Orange	Default
6.	16		350	16	Sand	Default
7.	6		94		R255 G107 B1	
8.	13		294	13	Purple	Default
9.	9		7,774	9	White	Default
10.	3		7,934		R22 G89 B89	
11.	7		10,639		R211 G136 B219	
12.	8		12,314	8	Black	Default

Production Worksheet

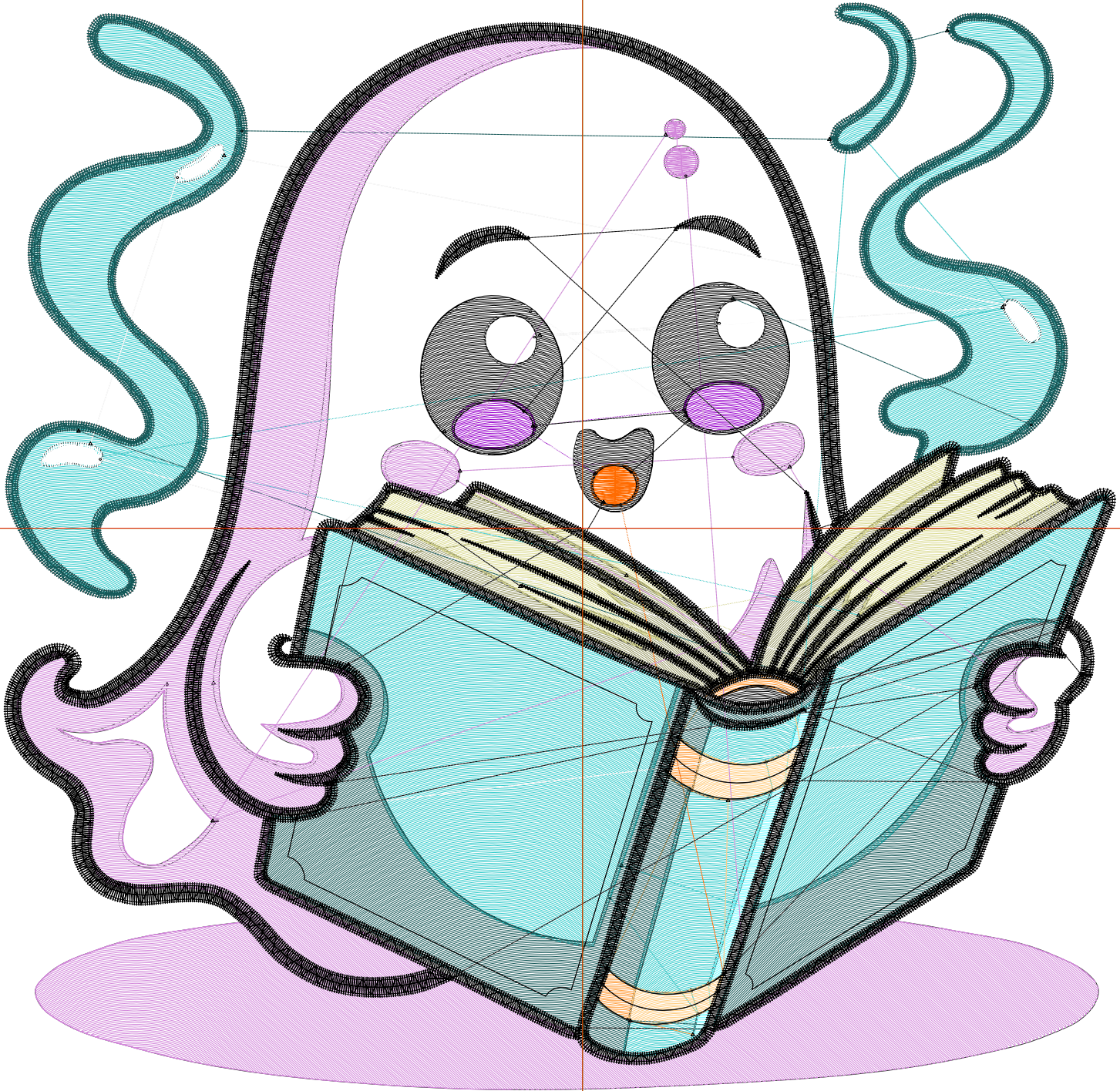
Wilcom EmbroideryStudio - Designing



Design: 7

Title:

Stitches: 68,107
Height: 7.35 in
Width: 7.51 in
Colors: 12
Colorway: Colorway 1
Zoom: 1:1



Production Worksheet

Wilcom EmbroideryStudio - Designing



Design: **7**

Title:

Stitches: 68,107
 Height: 7.35 in
 Width: 7.51 in
 Colors: 12
 Colorway: Colorway 1
 Zoom: 1:1

Machine format: Tajima
 Color changes: 11
 Stops: 12
 Trims: 73
 Appliqués: 0
 Left: 99.3 mm
 Right: 91.5 mm
 Up: 90.2 mm
 Down: 96.4 mm
 EndX: 0.00 in
 EndY: 0.00 in
 Area 55.20 in²
 Max stitch: 11.2 mm
 Min stitch: 0.0 mm
 Max jump: 7.0 mm
 Total thread: 1012.79ft
 Total bobbin: 333.01ft

Stop Sequence:

#	N#	Color	St.	Code	Name	Chart
1.	19		2,021	19	Khaki	Default
2.	2		2,047		R219 G219 B146	
3.	5		13,765	5	Aqua	Default
4.	4		443		R115 G250 B255	
5.	12		270	12	Orange	Default
6.	16		419	16	Sand	Default
7.	6		112		R255 G107 B1	
8.	13		363	13	Purple	Default
9.	9		10,197	9	White	Default
10.	3		9,560		R22 G89 B89	
11.	7		14,498		R211 G136 B219	
12.	8		14,410	8	Black	Default