

**Approval Sheet**

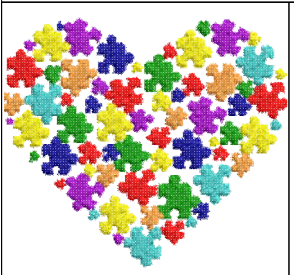
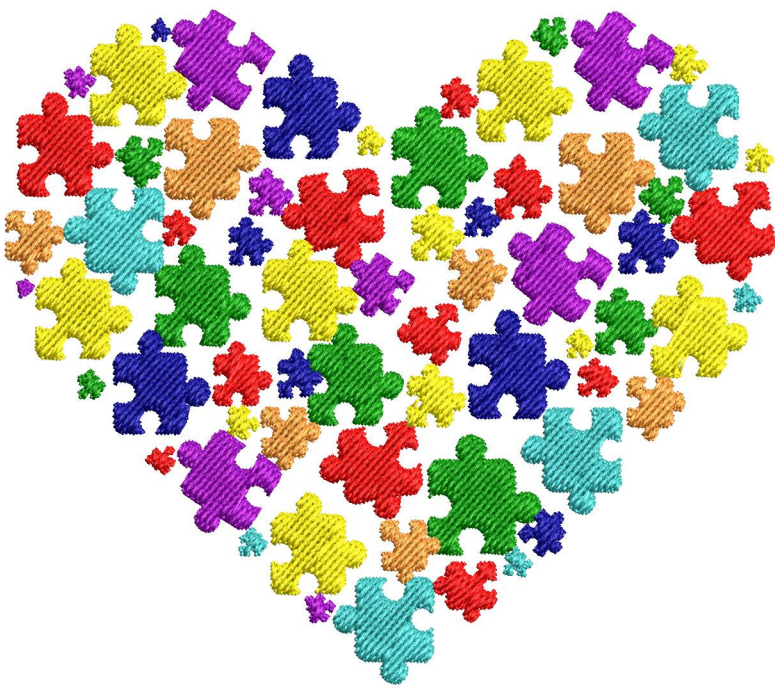
Wilcom EmbroideryStudio - Designing

**\* 4 INCH \***

Design: **4 inch**

Title:

Height: 3.50 in  
Width: 4.01 in  
Colors: 7  
Colorway: Colorway 1  
Zoom: 1:1



Product type:  
Product:  
Total qty:  
Product colors:  
Position:

**Terms and Conditions:**

**Approved By:**  
  

---

  
**Date:**

# Production Worksheet

Wilcom EmbroideryStudio - Designing

**\* 4 INCH \***

Design: **4 inch**

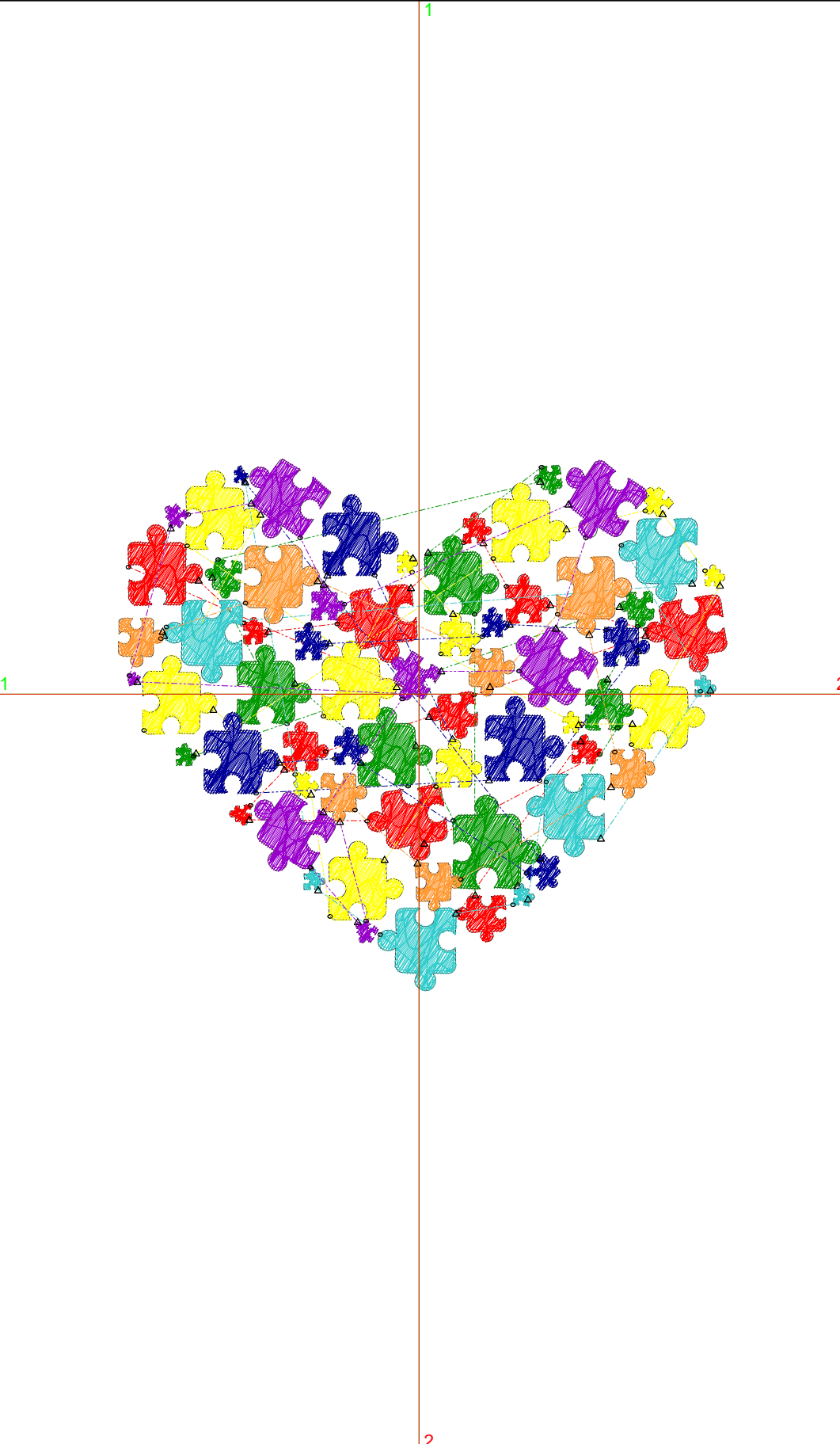
Title:

Stitches: 18,635  
 Height: 3.50 in  
 Width: 4.01 in  
 Colors: 7  
 Colorway: Colorway 1  
 Zoom: 1:1

Machine format: Tajima  
 Color changes: 6  
 Stops: 7  
 Trims: 66  
 Appliqués: 0  
 Left: 50.3 mm  
 Right: 51.4 mm  
 Up: 39.3 mm  
 Down: 49.6 mm  
 EndX: 0.00 in  
 EndY: 0.00 in  
 Area: 14.02 in<sup>2</sup>  
 Max stitch: 9.9 mm  
 Min stitch: 0.1 mm  
 Max jump: 7.0 mm  
 Total thread: 259.18ft  
 Total bobbin: 79.76ft

Stop Sequence:

#	N#	Color	St.	Code	Name	Chart
1.	3	Red	3,263	3	Red	Default
2.	1	Dark Green	2,718	1	Dark Green	Default
3.	4	Yellow	3,634	4	Yellow	Default
4.	10	Dark Blue	2,404	10	Dark Blue	Default
5.	5	Aqua	2,111	5	Aqua	Default
6.	12	Orange	2,081	12	Orange	Default
7.	13	Purple	2,422	13	Purple	Default



**Color Film**

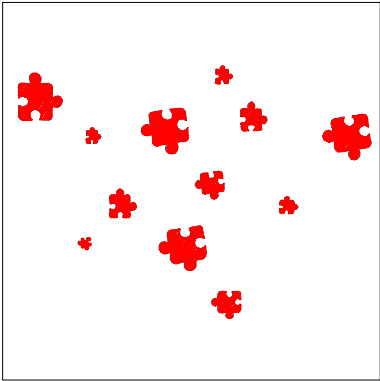
Wilcom EmbroideryStudio - Designing

**\* 4 INCH \***

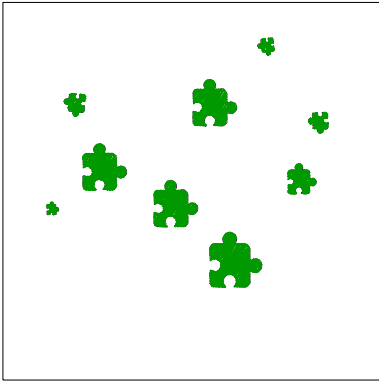
Design: **4 inch**

Title:

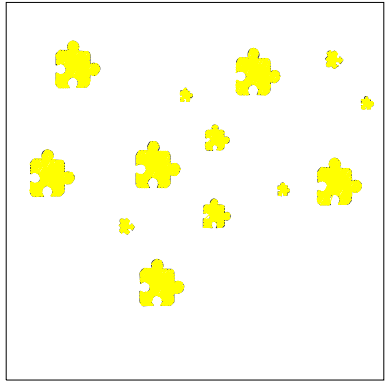
Stitches:	18,635
Height:	3.50 in
Width:	4.01 in
Colors:	7
Colorway:	Colorway 1
Zoom:	0.47



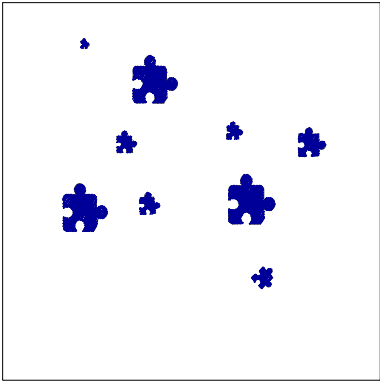
Stop #: 1  
 Element:  
 Code: 3  
 Name: Red  
 Chart: Default  
 Stitches: 3,263  
 Thread used: 43.75ft



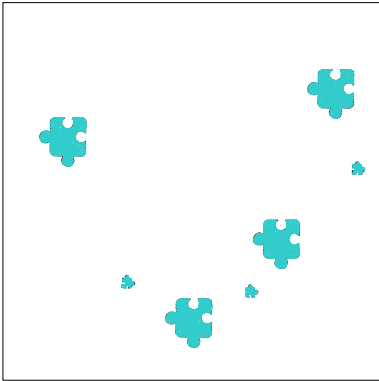
Stop #: 2  
 Element:  
 Code: 1  
 Name: Dark Green  
 Chart: Default  
 Stitches: 2,718  
 Thread used: 38.36ft



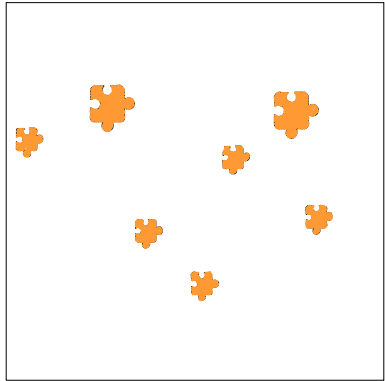
Stop #: 3  
 Element:  
 Code: 4  
 Name: Yellow  
 Chart: Default  
 Stitches: 3,634  
 Thread used: 49.94ft



Stop #: 4  
 Element:  
 Code: 10  
 Name: Dark Blue  
 Chart: Default  
 Stitches: 2,404  
 Thread used: 32.43ft



Stop #: 5  
 Element:  
 Code: 5  
 Name: Aqua  
 Chart: Default  
 Stitches: 2,111  
 Thread used: 30.30ft



Stop #: 6  
 Element:  
 Code: 12  
 Name: Orange  
 Chart: Default  
 Stitches: 2,081  
 Thread used: 28.15ft

# Color Film

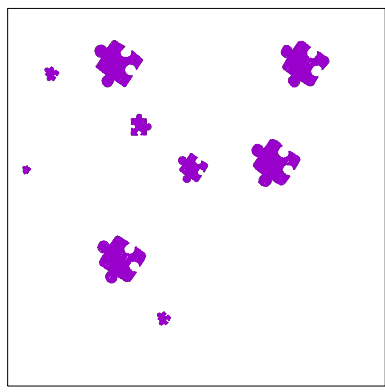
Wilcom EmbroideryStudio - Designing

**\* 4 INCH \***

Design: **4 inch**

Title:

Stitches: 18,635  
Height: 3.50 in  
Width: 4.01 in  
Colors: 7  
Colorway: Colorway 1  
Zoom: 0.47



Stop #: 7  
Element:  
Code: 13  
Name: Purple  
Chart: Default  
Stitches: 2,422  
Thread used: 33.94ft

# Production Summary

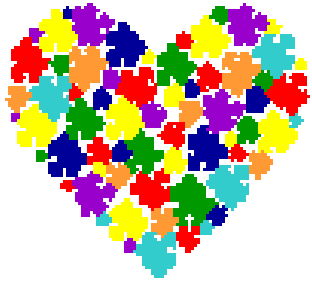
Wilcom EmbroideryStudio - Designing

**\* 4 INCH \***

Design: **4 inch**

Title:

Stitches: 18,635  
 Height: 3.50 in  
 Width: 4.01 in  
 Colors: 7



Machine format: Tajima  
 Color changes: 6  
 Stops: 7  
 Trims: 66  
 Hoop: <None>  
 Max stitch: 9.9 mm  
 Min stitch: 0.1 mm  
 Max jump: 7.0 mm

Left: 50.3 mm  
 Right: 51.4 mm  
 Up: 39.3 mm  
 Down: 49.6 mm  
 EndX: 0.00 in  
 EndY: 0.00 in  
 Area: 14.02 in<sup>2</sup>  
 Total thread: 259.18ft  
 Total bobbin: 79.76ft

Colorway		Colorway 1	
Background			
Product		Blanks\Blank	
Stop	Color	Stitches	
1	3	3,263	3 Red Default
2	1	2,718	1 Dark Green Default
3	4	3,634	4 Yellow Default
4	10	2,404	10 Dark Blue Default
5	5	2,111	5 Aqua Default
6	12	2,081	12 Orange Default
7	13	2,422	13 Purple Default

**Approval Sheet**

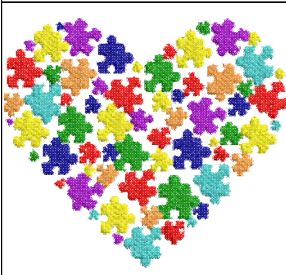
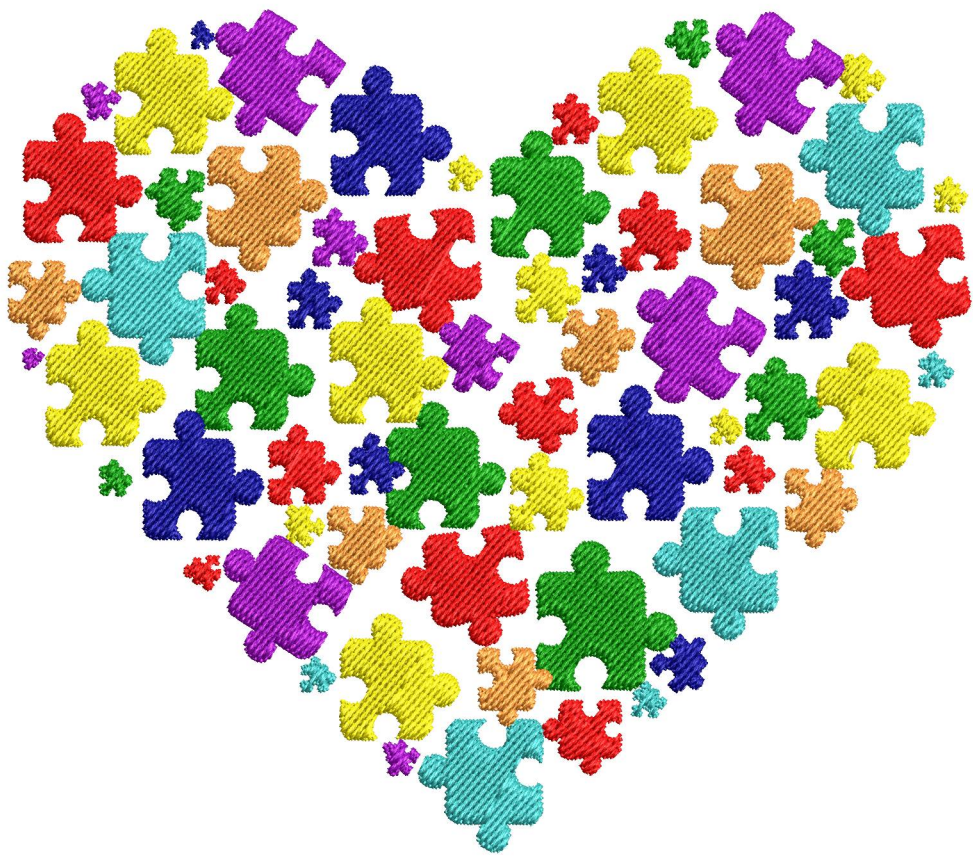
Wilcom EmbroideryStudio - Designing

**\*5 INCH\***

Design: **5 inch**

Title:

Height: 4.37 in  
Width: 5.01 in  
Colors: 7  
Colorway: Colorway 1  
Zoom: 1:1



Product type:  
Product:  
Total qty:  
Product colors:  
Position:

Terms and Conditions:

**Approved By:**  
  

---

  
**Date:**

# Production Worksheet

Wilcom EmbroideryStudio - Designing

**\*5 INCH\***

Design: **5 inch**

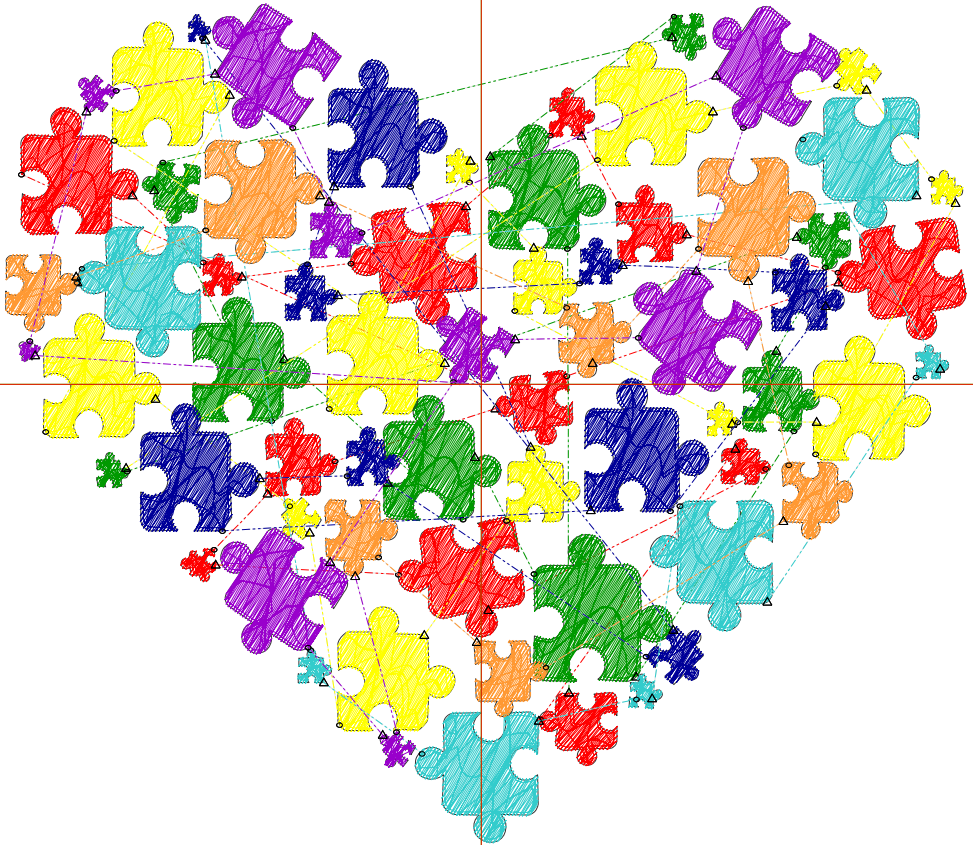
Title:

Stitches: 24,080  
 Height: 4.37 in  
 Width: 5.01 in  
 Colors: 7  
 Colorway: Colorway 1  
 Zoom: 1:1

Machine format: Tajima  
 Color changes: 6  
 Stops: 7  
 Trims: 66  
 Appliqués: 0  
 Left: 63.0 mm  
 Right: 64.2 mm  
 Up: 50.4 mm  
 Down: 60.7 mm  
 EndX: 0.00 in  
 EndY: 0.00 in  
 Area: 21.89 in<sup>2</sup>  
 Max stitch: 10.6 mm  
 Min stitch: 0.0 mm  
 Max jump: 7.0 mm  
 Total thread: 356.12ft  
 Total bobbin: 116.04ft

Stop Sequence:

#	N#	Color	St.	Code	Name	Chart
1.	3	Red	4,202	3	Red	Default
2.	1	Dark Green	3,518	1	Dark Green	Default
3.	4	Yellow	4,668	4	Yellow	Default
4.	10	Dark Blue	3,041	10	Dark Blue	Default
5.	5	Aqua	2,774	5	Aqua	Default
6.	12	Orange	2,699	12	Orange	Default
7.	13	Purple	3,176	13	Purple	Default



**Color Film**

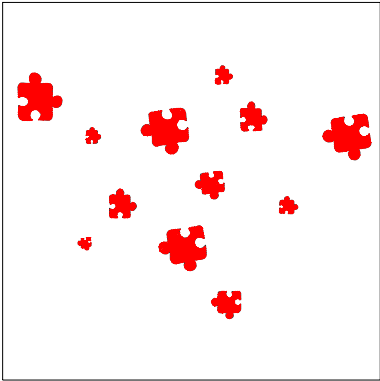
Wilcom EmbroideryStudio - Designing

**\*5 INCH\***

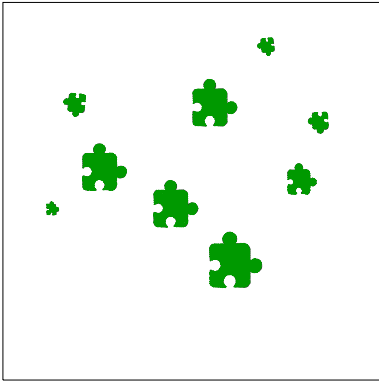
Design: **5 inch**

Title:

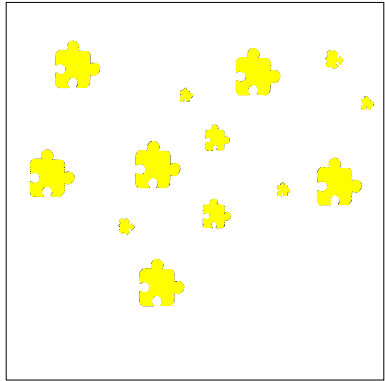
Stitches:	24,080
Height:	4.37 in
Width:	5.01 in
Colors:	7
Colorway:	Colorway 1
Zoom:	0.37



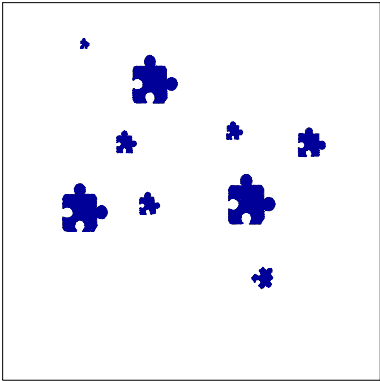
Stop #: 1  
 Element:  
 Code: 3  
 Name: Red  
 Chart: Default  
 Stitches: 4,202  
 Thread used: 60.32ft



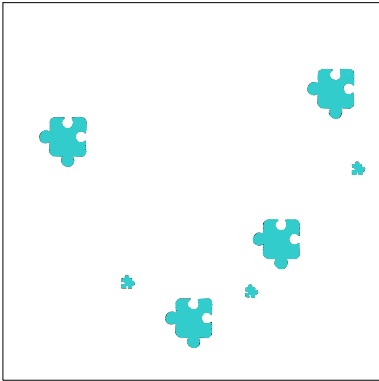
Stop #: 2  
 Element:  
 Code: 1  
 Name: Dark Green  
 Chart: Default  
 Stitches: 3,518  
 Thread used: 52.63ft



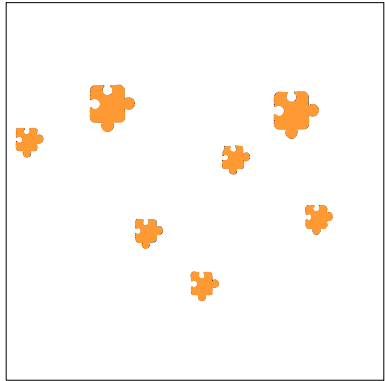
Stop #: 3  
 Element:  
 Code: 4  
 Name: Yellow  
 Chart: Default  
 Stitches: 4,668  
 Thread used: 68.69ft



Stop #: 4  
 Element:  
 Code: 10  
 Name: Dark Blue  
 Chart: Default  
 Stitches: 3,041  
 Thread used: 43.57ft



Stop #: 5  
 Element:  
 Code: 5  
 Name: Aqua  
 Chart: Default  
 Stitches: 2,774  
 Thread used: 42.12ft



Stop #: 6  
 Element:  
 Code: 12  
 Name: Orange  
 Chart: Default  
 Stitches: 2,699  
 Thread used: 39.20ft

# Color Film

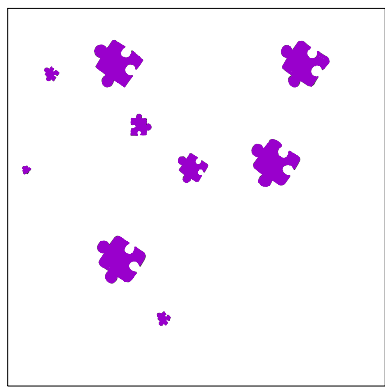
Wilcom EmbroideryStudio - Designing

**\*5 INCH\***

Design: **5 inch**

Title:

Stitches: 24,080  
Height: 4.37 in  
Width: 5.01 in  
Colors: 7  
Colorway: Colorway 1  
Zoom: 0.37



Stop #: 7  
Element:  
Code: 13  
Name: Purple  
Chart: Default  
Stitches: 3,176  
Thread used: 47.30ft

# Production Summary

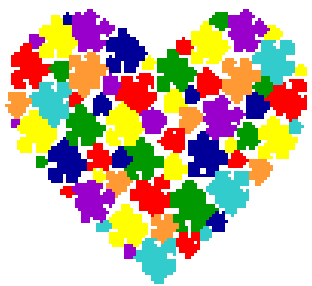
Wilcom EmbroideryStudio - Designing

**\*5 INCH\***

Design: **5 inch**

Title:

Stitches: 24,080  
 Height: 4.37 in  
 Width: 5.01 in  
 Colors: 7



Machine format: Tajima  
 Color changes: 6  
 Stops: 7  
 Trims: 66  
 Hoop: <None>  
 Max stitch: 10.6 mm  
 Min stitch: 0.0 mm  
 Max jump: 7.0 mm

Left: 63.0 mm  
 Right: 64.2 mm  
 Up: 50.4 mm  
 Down: 60.7 mm  
 EndX: 0.00 in  
 EndY: 0.00 in  
 Area: 21.89 in<sup>2</sup>  
 Total thread: 356.12ft  
 Total bobbin: 116.04ft

Colorway		Colorway 1	
Background			
Product		Blanks\Blank	
Stop	Color	Stitches	
1	3	4,202	3 Red Default
2	1	3,518	1 Dark Green Default
3	4	4,668	4 Yellow Default
4	10	3,041	10 Dark Blue Default
5	5	2,774	5 Aqua Default
6	12	2,699	12 Orange Default
7	13	3,176	13 Purple Default

# Approval Sheet

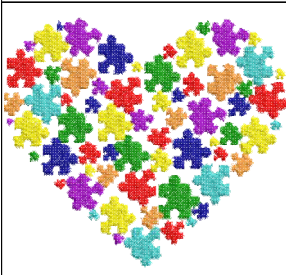
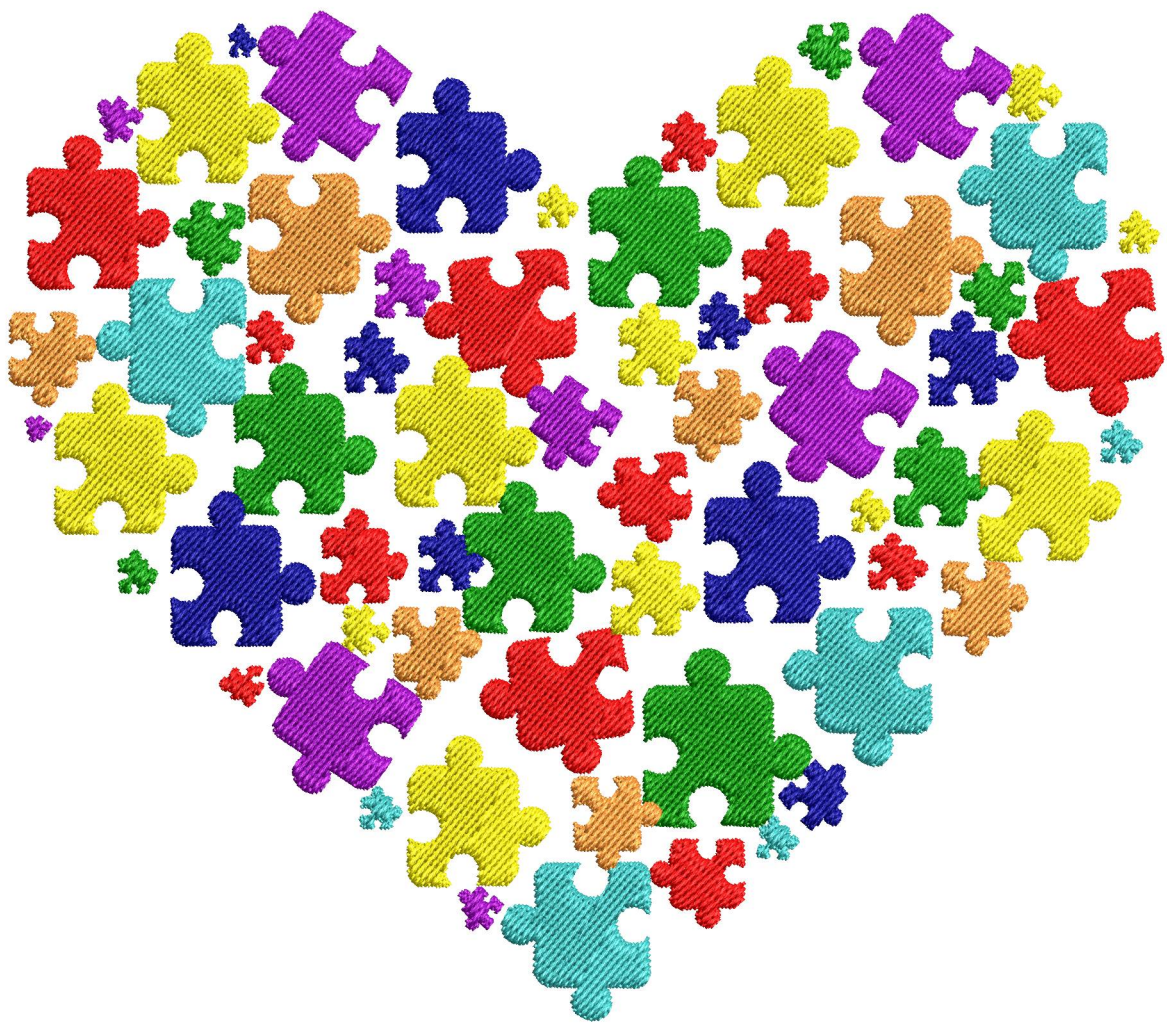
Wilcom EmbroideryStudio - Designing

**\*6 INCH\***

Design: **6 inch**

Title:

Height: 5.24 in  
Width: 6.01 in  
Colors: 7  
Colorway: Colorway 1  
Zoom: 1:1



Product type:  
Product:  
Total qty:  
Product colors:  
Position:

Terms and Conditions:

**Approved By:**  

---

**Date:**

# Production Worksheet

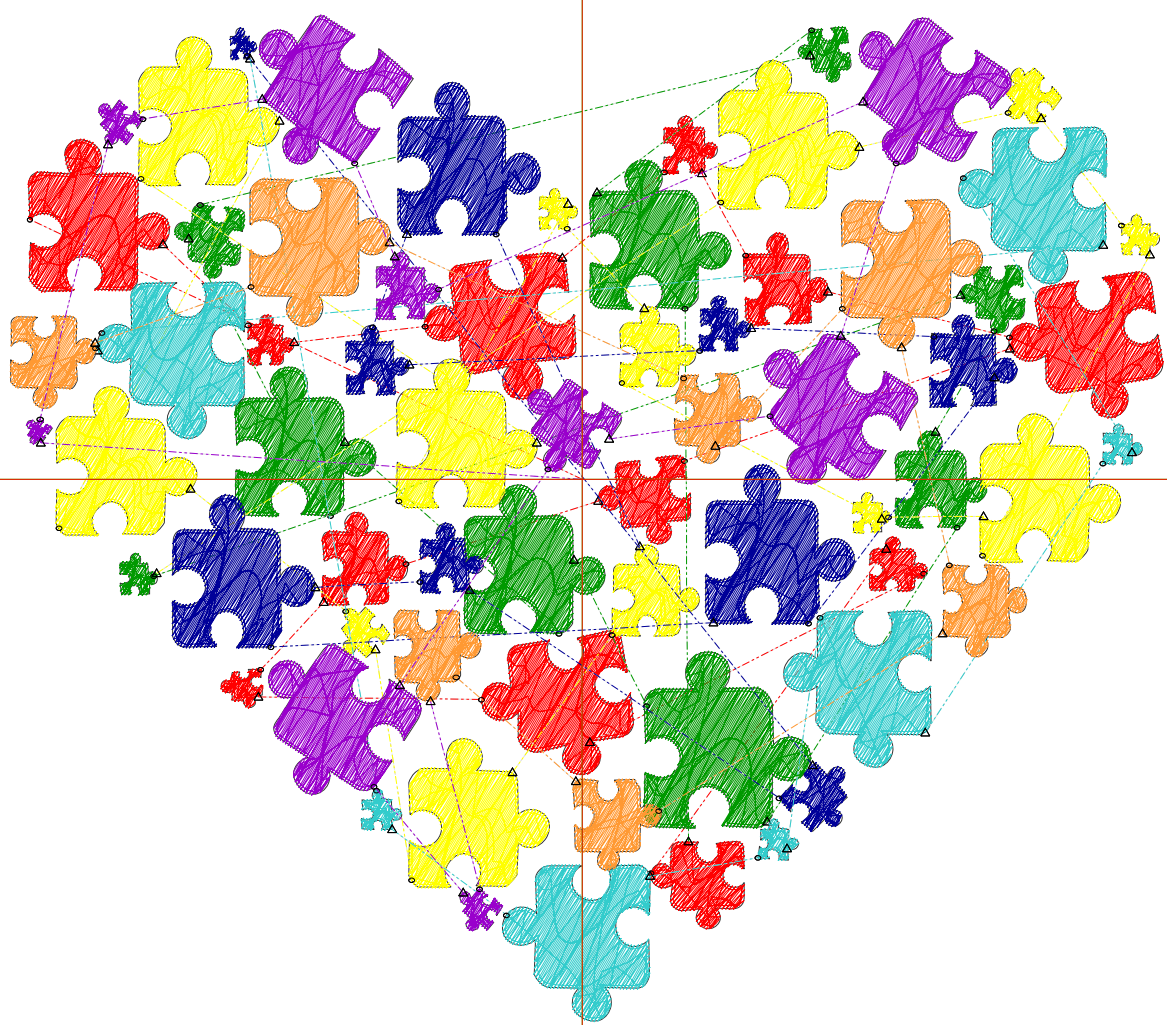
Wilcom EmbroideryStudio - Designing

**\*6 INCH\***

Design: **6 inch**

Title:

Stitches: 30,090  
Height: 5.24 in  
Width: 6.01 in  
Colors: 7  
Colorway: Colorway 1  
Zoom: 1:1



# Production Worksheet

Wilcom EmbroideryStudio - Designing

## \*6 INCH\*








Design: **6 inch**

Title:

Stitches: 30,090  
 Height: 5.24 in  
 Width: 6.01 in  
 Colors: 7  
 Colorway: Colorway 1  
 Zoom: 1:1

Machine format: Tajima  
 Color changes: 6  
 Stops: 7  
 Trims: 66  
 Appliqués: 0  
 Left: 75.7 mm  
 Right: 76.9 mm  
 Up: 61.5 mm  
 Down: 71.8 mm  
 EndX: 0.00 in  
 EndY: 0.00 in  
 Area 31.50 in<sup>2</sup>  
 Max stitch: 11.2 mm  
 Min stitch: 0.0 mm  
 Max jump: 7.0 mm  
 Total thread: 467.51ft  
 Total bobbin: 158.68ft

Stop Sequence:

#	N#	Color	St.	Code	Name	Chart
1.	3		5,205	3	Red	Default
2.	1		4,500	1	Dark Green	Default
3.	4		5,852	4	Yellow	Default
4.	10		3,819	10	Dark Blue	Default
5.	5		3,489	5	Aqua	Default
6.	12		3,307	12	Orange	Default
7.	13		3,916	13	Purple	Default

**Color Film**

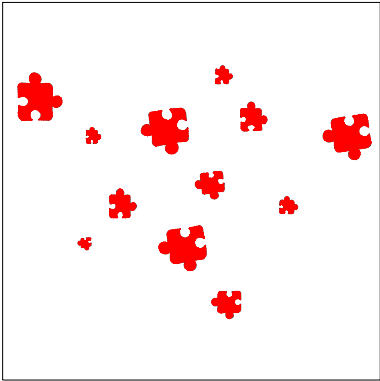
Wilcom EmbroideryStudio - Designing

**\*6 INCH\***

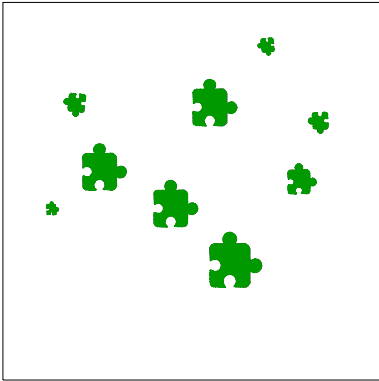
Design: **6 inch**

Title:

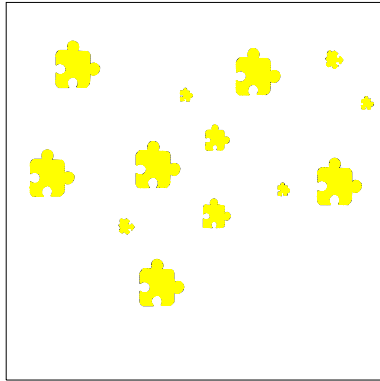
Stitches:	30,090
Height:	5.24 in
Width:	6.01 in
Colors:	7
Colorway:	Colorway 1
Zoom:	0.31



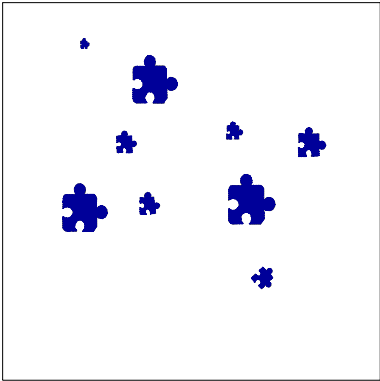
Stop #: 1  
 Element:  
 Code: 3  
 Name: Red  
 Chart: Default  
 Stitches: 5,205  
 Thread used: 78.51ft



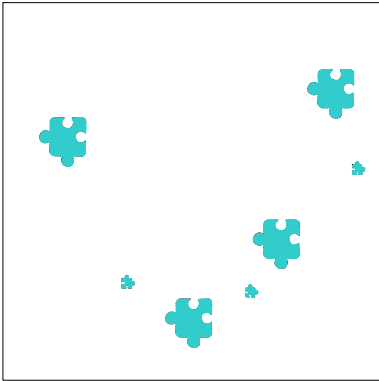
Stop #: 2  
 Element:  
 Code: 1  
 Name: Dark Green  
 Chart: Default  
 Stitches: 4,500  
 Thread used: 70.24ft



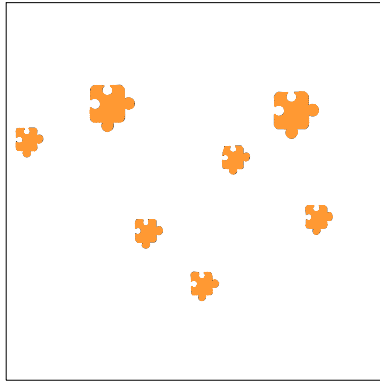
Stop #: 3  
 Element:  
 Code: 4  
 Name: Yellow  
 Chart: Default  
 Stitches: 5,852  
 Thread used: 90.88ft



Stop #: 4  
 Element:  
 Code: 10  
 Name: Dark Blue  
 Chart: Default  
 Stitches: 3,819  
 Thread used: 57.56ft



Stop #: 5  
 Element:  
 Code: 5  
 Name: Aqua  
 Chart: Default  
 Stitches: 3,489  
 Thread used: 55.81ft



Stop #: 6  
 Element:  
 Code: 12  
 Name: Orange  
 Chart: Default  
 Stitches: 3,307  
 Thread used: 50.67ft

# Color Film

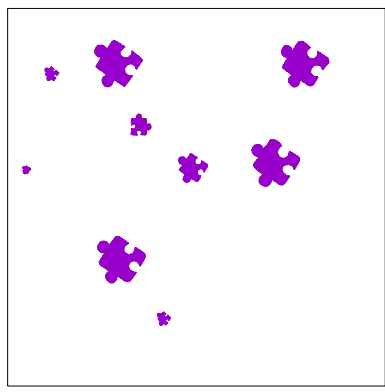
Wilcom EmbroideryStudio - Designing

**\*6 INCH\***

Design: **6 inch**

Title:

Stitches: 30,090  
Height: 5.24 in  
Width: 6.01 in  
Colors: 7  
Colorway: Colorway 1  
Zoom: 0.31



Stop #: 7  
Element:  
Code: 13  
Name: Purple  
Chart: Default  
Stitches: 3,916  
Thread used: 61.52ft

# Production Summary

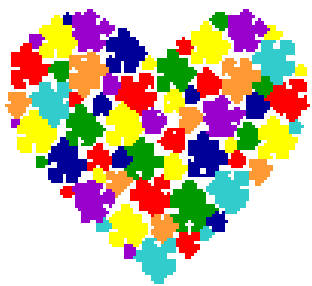
Wilcom EmbroideryStudio - Designing

**\*6 INCH\***

Design: **6 inch**

Title:

Stitches: 30,090  
 Height: 5.24 in  
 Width: 6.01 in  
 Colors: 7



Machine format: Tajima  
 Color changes: 6  
 Stops: 7  
 Trims: 66  
 Hoop: <None>  
 Max stitch: 11.2 mm  
 Min stitch: 0.0 mm  
 Max jump: 7.0 mm

Left: 75.7 mm  
 Right: 76.9 mm  
 Up: 61.5 mm  
 Down: 71.8 mm  
 EndX: 0.00 in  
 EndY: 0.00 in  
 Area: 31.50 in<sup>2</sup>  
 Total thread: 467.51ft  
 Total bobbin: 158.68ft

Colorway			Colorway 1
Background			
Product			Blanks\Blank
Stop	Color	Stitches	
1	3	5,205	<b>3</b> Red Default
2	1	4,500	<b>1</b> Dark Green Default
3	4	5,852	<b>4</b> Yellow Default
4	10	3,819	<b>10</b> Dark Blue Default
5	5	3,489	<b>5</b> Aqua Default
6	12	3,307	<b>12</b> Orange Default
7	13	3,916	<b>13</b> Purple Default

**Approval Sheet**

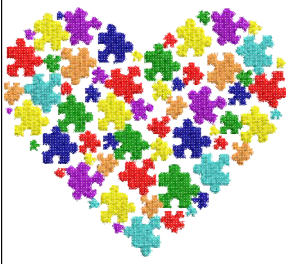
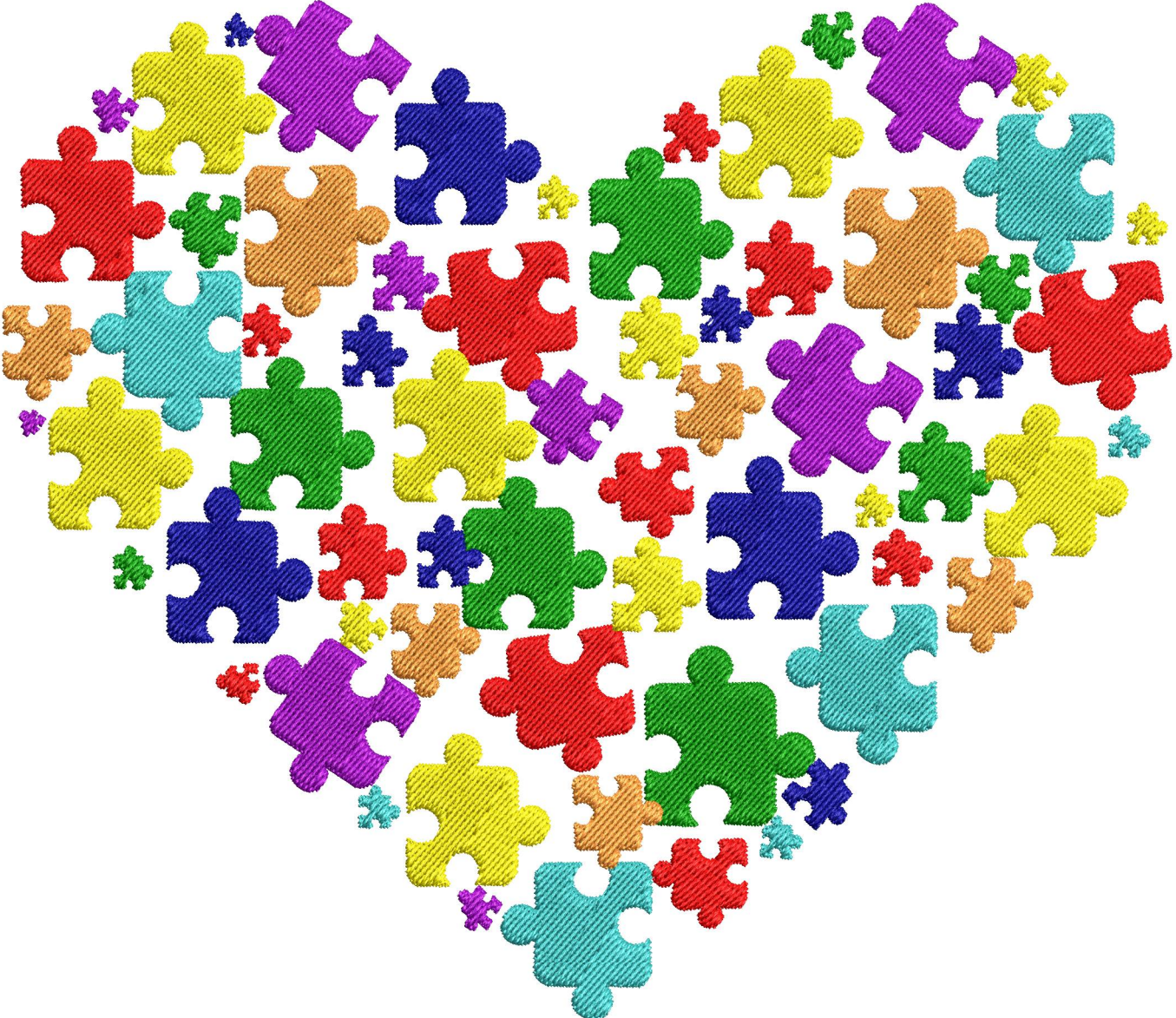
Wilcom EmbroideryStudio - Designing

**\*7 INCH\***

Design: **7 inch**

Title:

Height: 6.12 in  
Width: 7.01 in  
Colors: 7  
Colorway: Colorway 1  
Zoom: 1:1



Product type:  
Product:  
Total qty:  
Product colors:  
Position:

Terms and Conditions:

**Approved By:**  
  
**Date:**

# Production Worksheet

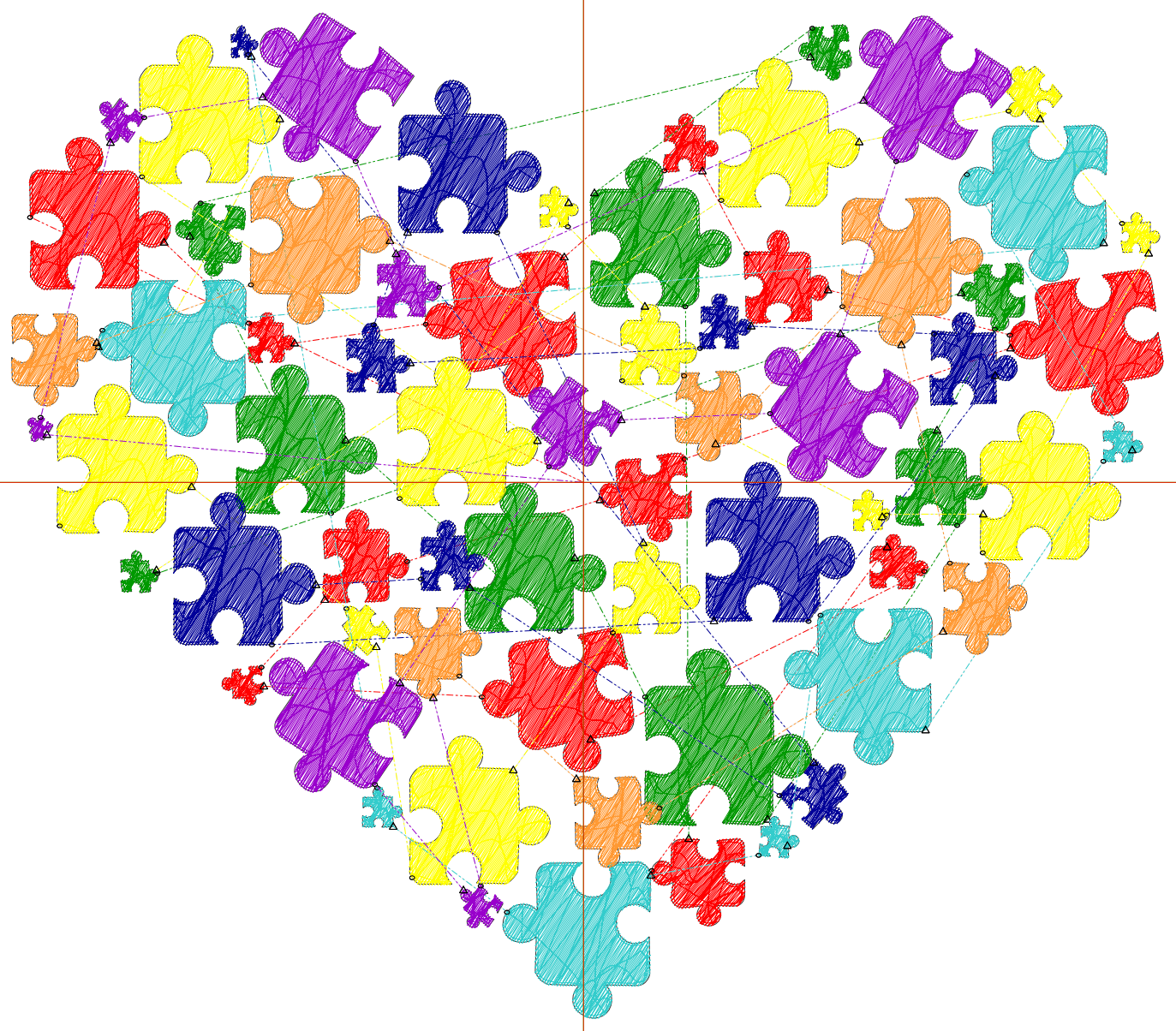
Wilcom EmbroideryStudio - Designing

**\*7 INCH\***

Design: **7 inch**

Title:

Stitches: 36,395  
Height: 6.12 in  
Width: 7.01 in  
Colors: 7  
Colorway: Colorway 1  
Zoom: 1:1



# Production Worksheet

Wilcom EmbroideryStudio - Designing

## \*7 INCH\*







Design: **7 inch**

Title:

Stitches: 36,395  
 Height: 6.12 in  
 Width: 7.01 in  
 Colors: 7  
 Colorway: Colorway 1  
 Zoom: 1:1

Machine format: Tajima  
 Color changes: 6  
 Stops: 7  
 Trims: 66  
 Appliqués: 0  
 Left: 88.4 mm  
 Right: 89.5 mm  
 Up: 72.6 mm  
 Down: 82.8 mm  
 EndX: 0.00 in  
 EndY: 0.00 in  
 Area 42.86 in<sup>2</sup>  
 Max stitch: 11.2 mm  
 Min stitch: 0.2 mm  
 Max jump: 7.0 mm  
 Total thread: 591.65ft  
 Total bobbin: 207.73ft

Stop Sequence:

#	N#	Color	St.	Code	Name	Chart
1.	3		6,224	3	Red	Default
2.	1		5,425	1	Dark Green	Default
3.	4		7,081	4	Yellow	Default
4.	10		4,611	10	Dark Blue	Default
5.	5		4,268	5	Aqua	Default
6.	12		4,001	12	Orange	Default
7.	13		4,783	13	Purple	Default

# Color Film

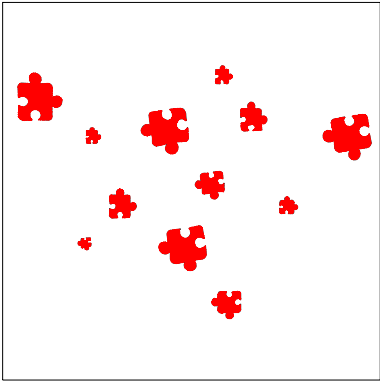
Wilcom EmbroideryStudio - Designing

## \*7 INCH\*

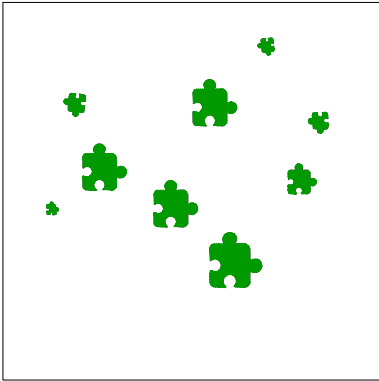
Design: 7 inch

Title:

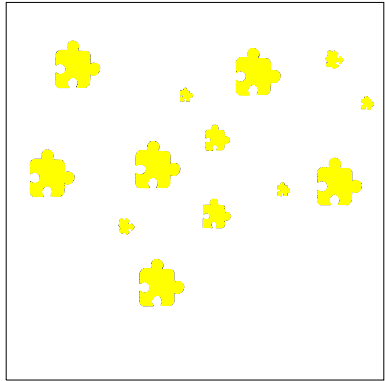
Stitches: 36,395  
Height: 6.12 in  
Width: 7.01 in  
Colors: 7  
Colorway: Colorway 1  
Zoom: 0.27



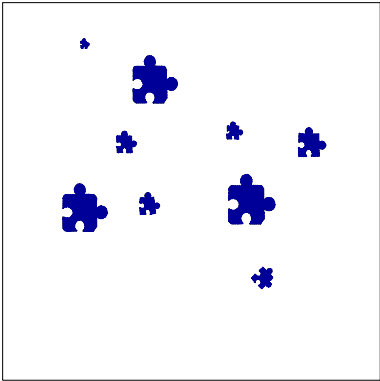
Stop #: 1  
Element:  
Code: 3  
Name: Red  
Chart: Default  
Stitches: 6,224  
Thread used: 98.76ft



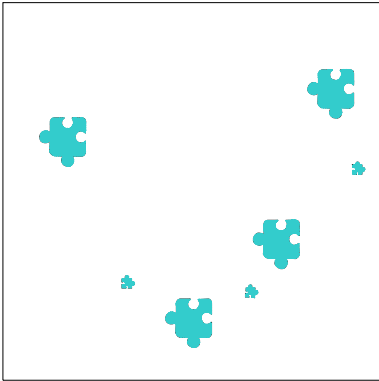
Stop #: 2  
Element:  
Code: 1  
Name: Dark Green  
Chart: Default  
Stitches: 5,425  
Thread used: 88.99ft



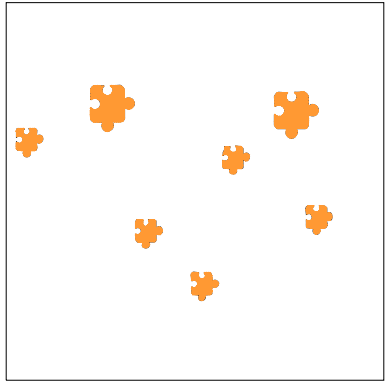
Stop #: 3  
Element:  
Code: 4  
Name: Yellow  
Chart: Default  
Stitches: 7,081  
Thread used: 115.25ft



Stop #: 4  
Element:  
Code: 10  
Name: Dark Blue  
Chart: Default  
Stitches: 4,611  
Thread used: 72.52ft



Stop #: 5  
Element:  
Code: 5  
Name: Aqua  
Chart: Default  
Stitches: 4,268  
Thread used: 71.02ft



Stop #: 6  
Element:  
Code: 12  
Name: Orange  
Chart: Default  
Stitches: 4,001  
Thread used: 64.43ft

# Color Film

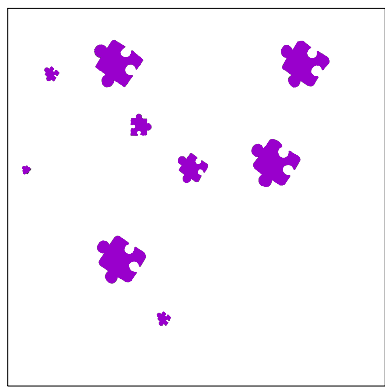
Wilcom EmbroideryStudio - Designing

**\*7 INCH\***

Design: **7 inch**

Title:

Stitches: 36,395  
Height: 6.12 in  
Width: 7.01 in  
Colors: 7  
Colorway: Colorway 1  
Zoom: 0.27



Stop #: 7  
Element:  
Code: 13  
Name: Purple  
Chart: Default  
Stitches: 4,783  
Thread used: 78.38ft

# Production Summary

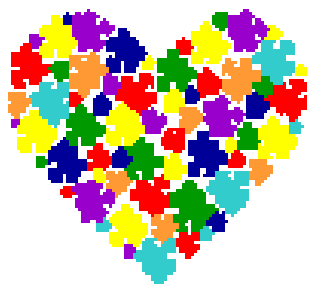
Wilcom EmbroideryStudio - Designing

**\*7 INCH\***

Design: **7 inch**

Title:

Stitches: 36,395  
 Height: 6.12 in  
 Width: 7.01 in  
 Colors: 7



Machine format: Tajima  
 Color changes: 6  
 Stops: 7  
 Trims: 66  
 Hoop: <None>  
 Max stitch: 11.2 mm  
 Min stitch: 0.2 mm  
 Max jump: 7.0 mm

Left: 88.4 mm  
 Right: 89.5 mm  
 Up: 72.6 mm  
 Down: 82.8 mm  
 EndX: 0.00 in  
 EndY: 0.00 in  
 Area: 42.86 in<sup>2</sup>  
 Total thread: 591.65ft  
 Total bobbin: 207.73ft

Colorway		Colorway 1	
Background			
Product		Blanks\Blank	
Stop	Color	Stitches	
1	3	6,224	3 Red Default
2	1	5,425	1 Dark Green Default
3	4	7,081	4 Yellow Default
4	10	4,611	10 Dark Blue Default
5	5	4,268	5 Aqua Default
6	12	4,001	12 Orange Default
7	13	4,783	13 Purple Default

# Approval Sheet

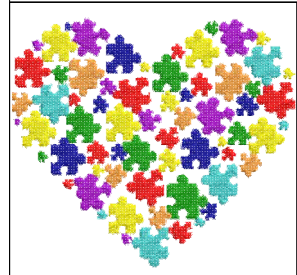
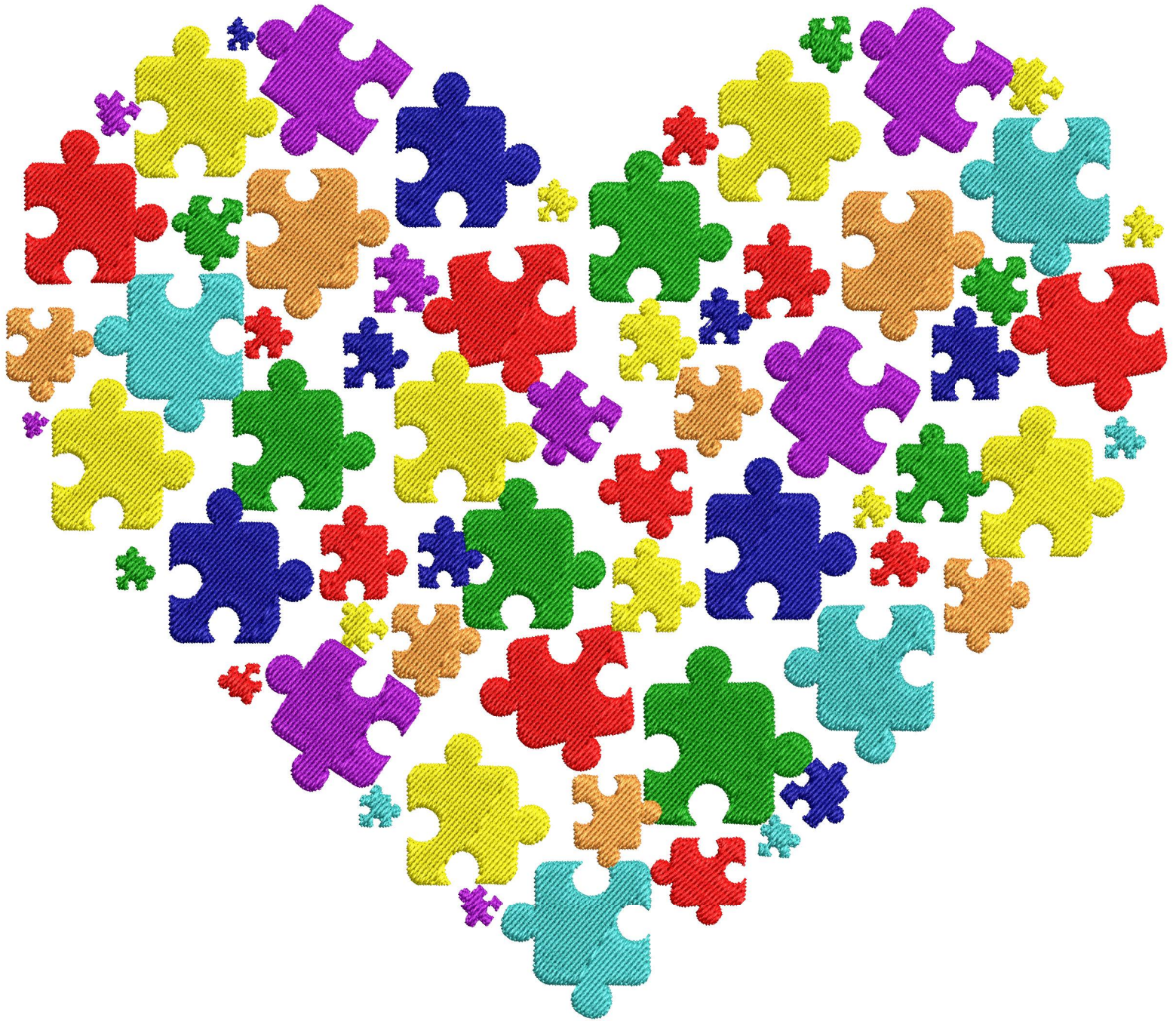
Wilcom EmbroideryStudio - Designing

\*8 INCH\*

Design: 8 inch

Title:

Height: 6.99 in  
Width: 8.00 in  
Colors: 7  
Colorway: Colorway 1  
Zoom: 1:1



Product type:  
Product:  
Total qty:  
Product colors:  
Position:

Terms and Conditions:

**Approved By:**  

---

**Date:**

# Production Worksheet

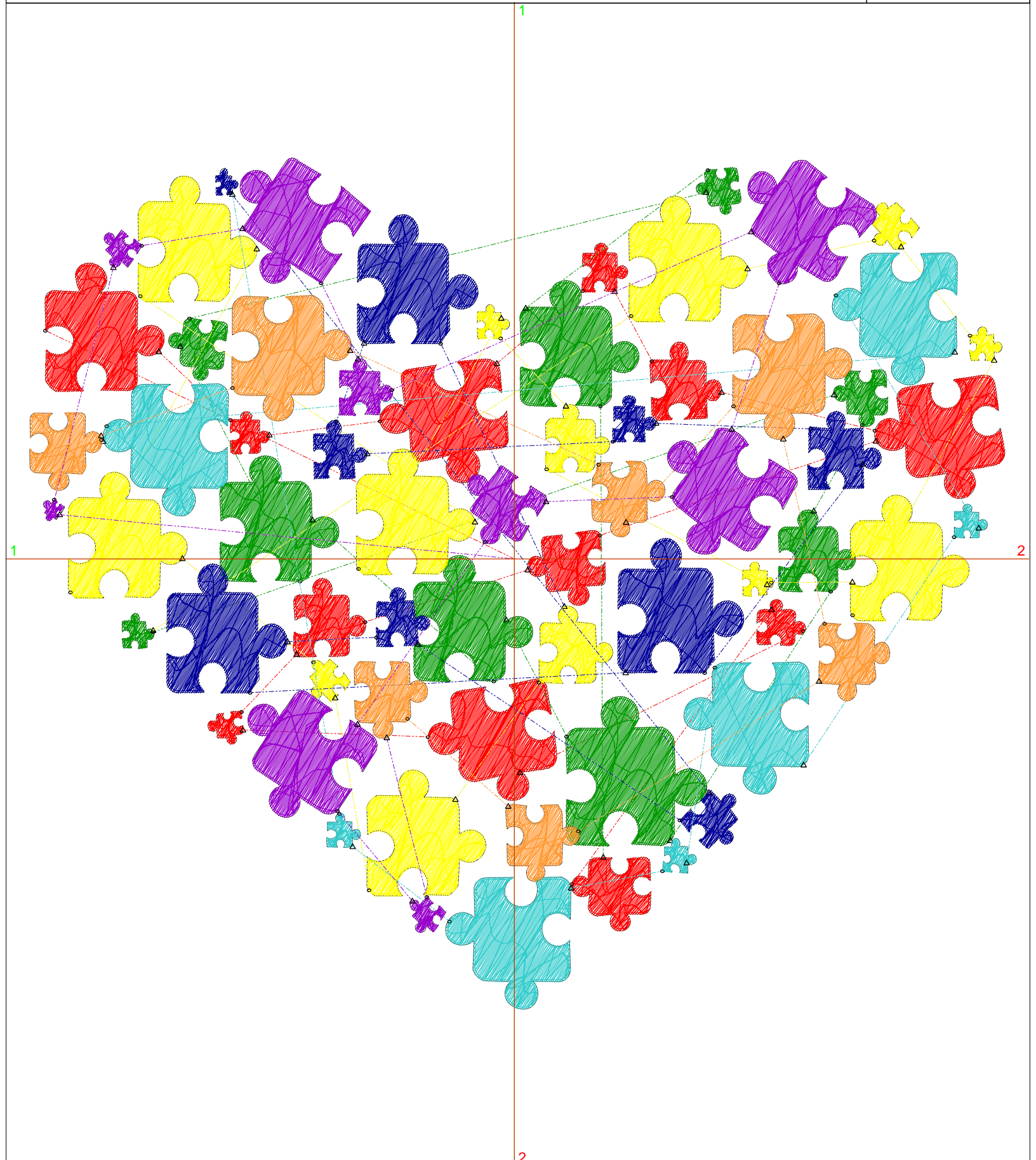
Wilcom EmbroideryStudio - Designing

\*8 INCH\*

Design: 8 inch

Title:

Stitches: 43,499  
Height: 6.99 in  
Width: 8.00 in  
Colors: 7  
Colorway: Colorway 1  
Zoom: 1:1



# Production Worksheet

Wilcom EmbroideryStudio - Designing

## \*8 INCH\*








Design: **8 inch**

Title:

Stitches: 43,499  
 Height: 6.99 in  
 Width: 8.00 in  
 Colors: 7  
 Colorway: Colorway 1  
 Zoom: 1:1

Machine format: Tajima  
 Color changes: 6  
 Stops: 7  
 Trims: 66  
 Appliqués: 0  
 Left: 101.1 mm  
 Right: 102.2 mm  
 Up: 83.6 mm  
 Down: 93.9 mm  
 EndX: 0.00 in  
 EndY: 0.00 in  
 Area 55.95 in<sup>2</sup>  
 Max stitch: 11.9 mm  
 Min stitch: 0.0 mm  
 Max jump: 7.0 mm  
 Total thread: 732.73ft  
 Total bobbin: 263.71ft

Stop Sequence:

#	N#	Color	St.	Code	Name	Chart
1.	3		7,497	3	Red	Default
2.	1		6,484	1	Dark Green	Default
3.	4		8,432	4	Yellow	Default
4.	10		5,433	10	Dark Blue	Default
5.	5		5,171	5	Aqua	Default
6.	12		4,741	12	Orange	Default
7.	13		5,739	13	Purple	Default

**Color Film**

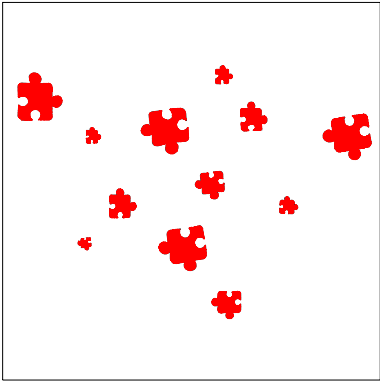
Wilcom EmbroideryStudio - Designing

**\*8 INCH\***

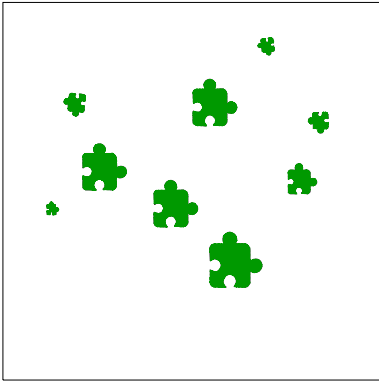
Design: **8 inch**

Title:

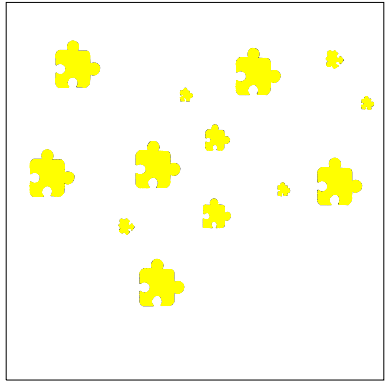
Stitches:	43,499
Height:	6.99 in
Width:	8.00 in
Colors:	7
Colorway:	Colorway 1
Zoom:	0.23



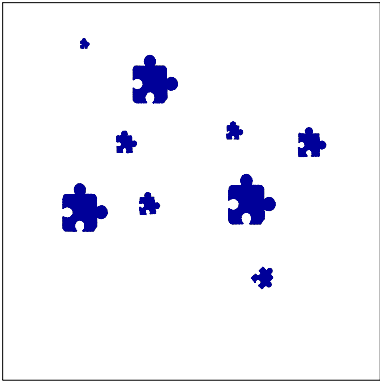
Stop #: 1  
 Element:  
 Code: 3  
 Name: Red  
 Chart: Default  
 Stitches: 7,497  
 Thread used: 123.35ft



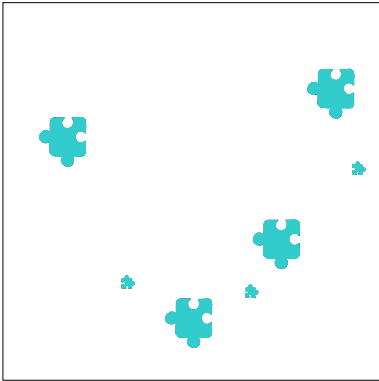
Stop #: 2  
 Element:  
 Code: 1  
 Name: Dark Green  
 Chart: Default  
 Stitches: 6,484  
 Thread used: 110.35ft



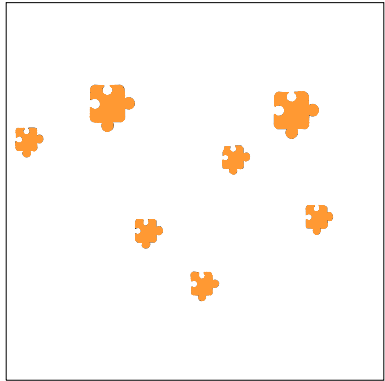
Stop #: 3  
 Element:  
 Code: 4  
 Name: Yellow  
 Chart: Default  
 Stitches: 8,432  
 Thread used: 142.62ft



Stop #: 4  
 Element:  
 Code: 10  
 Name: Dark Blue  
 Chart: Default  
 Stitches: 5,433  
 Thread used: 88.95ft



Stop #: 5  
 Element:  
 Code: 5  
 Name: Aqua  
 Chart: Default  
 Stitches: 5,171  
 Thread used: 88.91ft



Stop #: 6  
 Element:  
 Code: 12  
 Name: Orange  
 Chart: Default  
 Stitches: 4,741  
 Thread used: 79.21ft

# Color Film

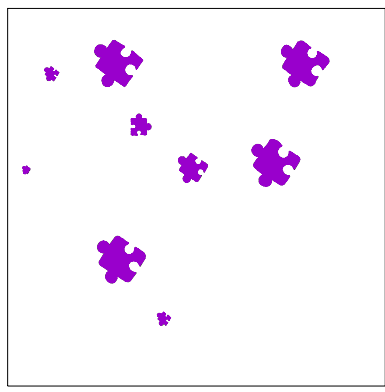
Wilcom EmbroideryStudio - Designing

**\*8 INCH\***

Design: **8 inch**

Title:

Stitches: 43,499  
Height: 6.99 in  
Width: 8.00 in  
Colors: 7  
Colorway: Colorway 1  
Zoom: 0.23



Stop #: 7  
Element:  
Code: 13  
Name: Purple  
Chart: Default  
Stitches: 5,739  
Thread used: 97.04ft

# Production Summary

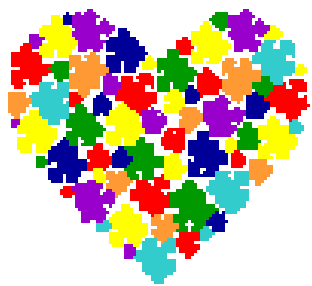
Wilcom EmbroideryStudio - Designing

**\*8 INCH\***

Design: **8 inch**

Title:

Stitches: 43,499  
 Height: 6.99 in  
 Width: 8.00 in  
 Colors: 7



Machine format: Tajima  
 Color changes: 6  
 Stops: 7  
 Trims: 66  
 Hoop: <None>  
 Max stitch: 11.9 mm  
 Min stitch: 0.0 mm  
 Max jump: 7.0 mm

Left: 101.1 mm  
 Right: 102.2 mm  
 Up: 83.6 mm  
 Down: 93.9 mm  
 EndX: 0.00 in  
 EndY: 0.00 in  
 Area: 55.95 in<sup>2</sup>  
 Total thread: 732.73ft  
 Total bobbin: 263.71ft

Colorway		Colorway 1	
Background			
Product		Blanks\Blank	
Stop	Color	Stitches	
1	3	7,497	3 Red Default
2	1	6,484	1 Dark Green Default
3	4	8,432	4 Yellow Default
4	10	5,433	10 Dark Blue Default
5	5	5,171	5 Aqua Default
6	12	4,741	12 Orange Default
7	13	5,739	13 Purple Default