

Production Worksheet

Wilcom EmbroideryStudio - Designing



Design: **3**

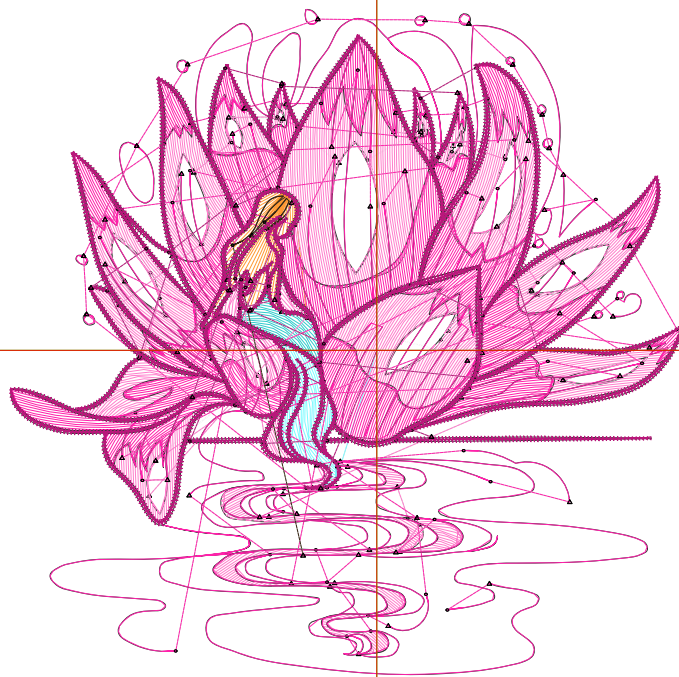
Title:

Stitches: 15,815
 Height: 3.46 in
 Width: 3.51 in
 Colors: 8
 Colorway: Colorway 1
 Zoom: 1:1

Machine format: Tajima
 Color changes: 7
 Stops: 8
 Trims: 152
 Appliqués: 0
 Left: 48.6 mm
 Right: 40.6 mm
 Up: 45.1 mm
 Down: 42.9 mm
 EndX: 0.00 in
 EndY: 0.00 in
 Area: 12.16 in²
 Max stitch: 6.9 mm
 Min stitch: 0.0 mm
 Max jump: 6.9 mm
 Total thread: 201.83ft
 Total bobbin: 56.55ft

Stop Sequence:

#	N#	Color	St.	Code	Name	Chart
1.	3		166		R124 G251 B255	
2.	5		113	5	Aqua	Default
3.	12		184	12	Orange	Default
4.	9		691	9	White	Default
5.	15		3,459	15	Pink	Default
6.	1		4,472		R255 G33 B170	
7.	4		54		R54 G36 B18	
8.	2		6,674		R184 G24 B122	



Production Worksheet

Wilcom EmbroideryStudio - Designing



Design: **4**

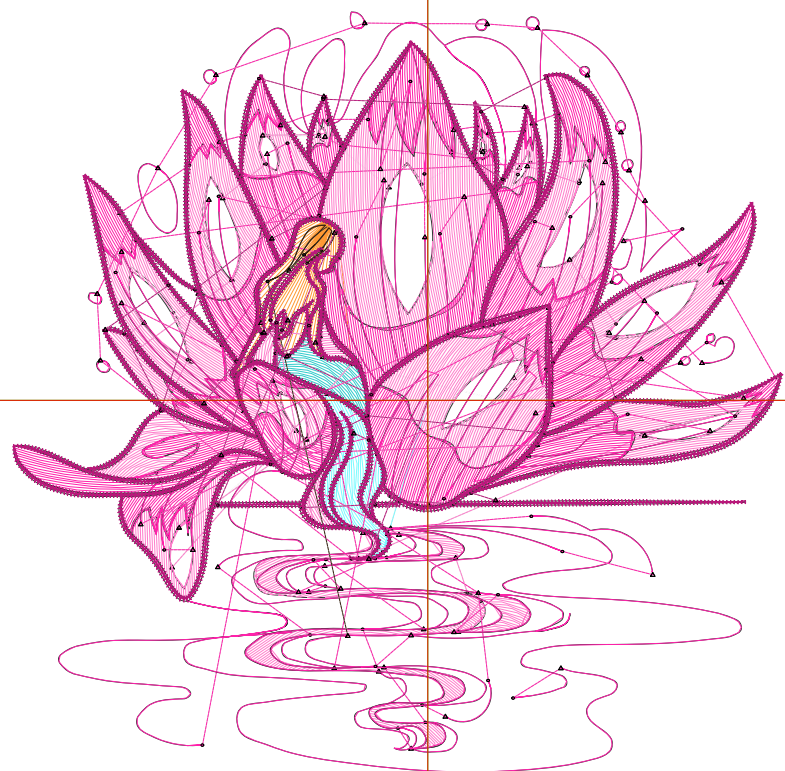
Title:

Stitches: 18,413
 Height: 3.96 in
 Width: 4.01 in
 Colors: 8
 Colorway: Colorway 1
 Zoom: 1:1

Machine format: Tajima
 Color changes: 7
 Stops: 8
 Trims: 154
 Appliqués: 0
 Left: 54.9 mm
 Right: 47.0 mm
 Up: 51.4 mm
 Down: 49.1 mm
 EndX: 0.00 in
 EndY: 0.00 in
 Area: 15.88 in²
 Max stitch: 7.0 mm
 Min stitch: 0.0 mm
 Max jump: 7.0 mm
 Total thread: 240.83ft
 Total bobbin: 69.56ft

Stop Sequence:

#	N#	Color	St.	Code	Name	Chart
1.	3		198		R124 G251 B255	
2.	5		149	5	Aqua	Default
3.	12		215	12	Orange	Default
4.	9		814	9	White	Default
5.	15		4,184	15	Pink	Default
6.	1		5,245		R255 G33 B170	
7.	4		59		R54 G36 B18	
8.	2		7,547		R184 G24 B122	



Production Worksheet

Wilcom EmbroideryStudio - Designing



Design: **4**

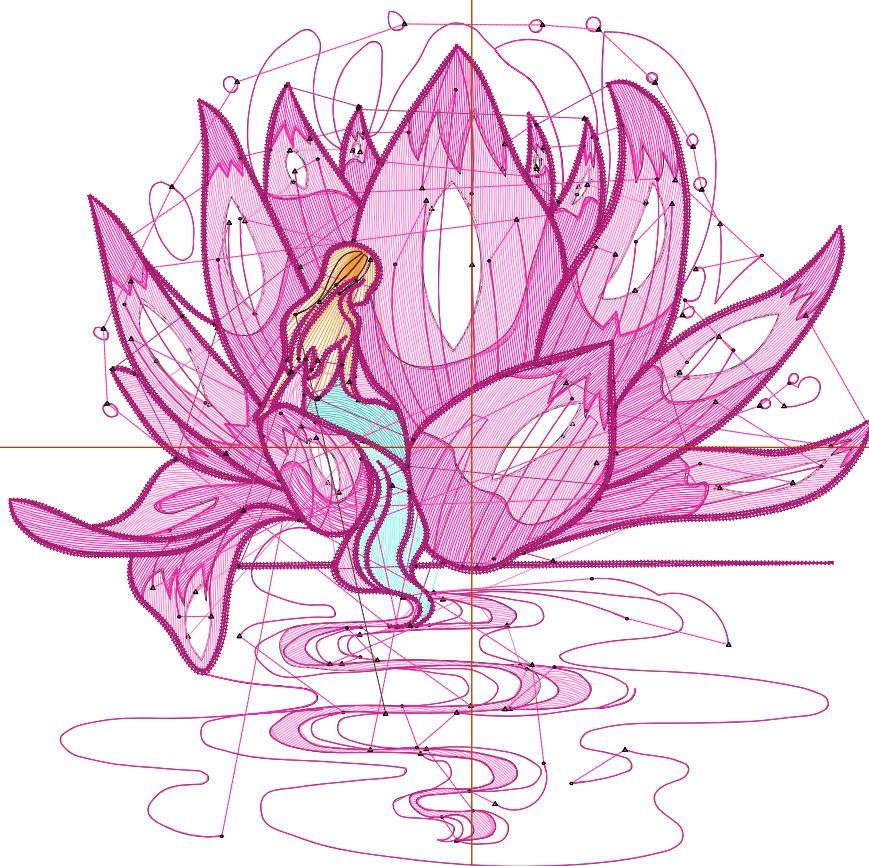
Title:

Stitches: 21,036
Height: 4.45 in
Width: 4.51 in
Colors: 8
Colorway: Colorway 1
Zoom: 1:1

Machine format: Tajima
Color changes: 7
Stops: 8
Trims: 158
Appliqués: 0
Left: 61.3 mm
Right: 53.3 mm
Up: 57.7 mm
Down: 55.4 mm
EndX: 0.00 in
EndY: 0.00 in
Area: 20.09 in²
Max stitch: 7.0 mm
Min stitch: 0.0 mm
Max jump: 7.0 mm
Total thread: 281.03ft
Total bobbin: 83.19ft

Stop Sequence:

#	N#	Color	St.	Code	Name	Chart
1.	3		251		R124 G251 B255	
2.	5		180	5	Aqua	Default
3.	12		263	12	Orange	Default
4.	9		939	9	White	Default
5.	15		4,992	15	Pink	Default
6.	1		5,876		R255 G33 B170	
7.	4		63		R54 G36 B18	
8.	2		8,470		R184 G24 B122	



Production Worksheet

Wilcom EmbroideryStudio - Designing



Design: **5**

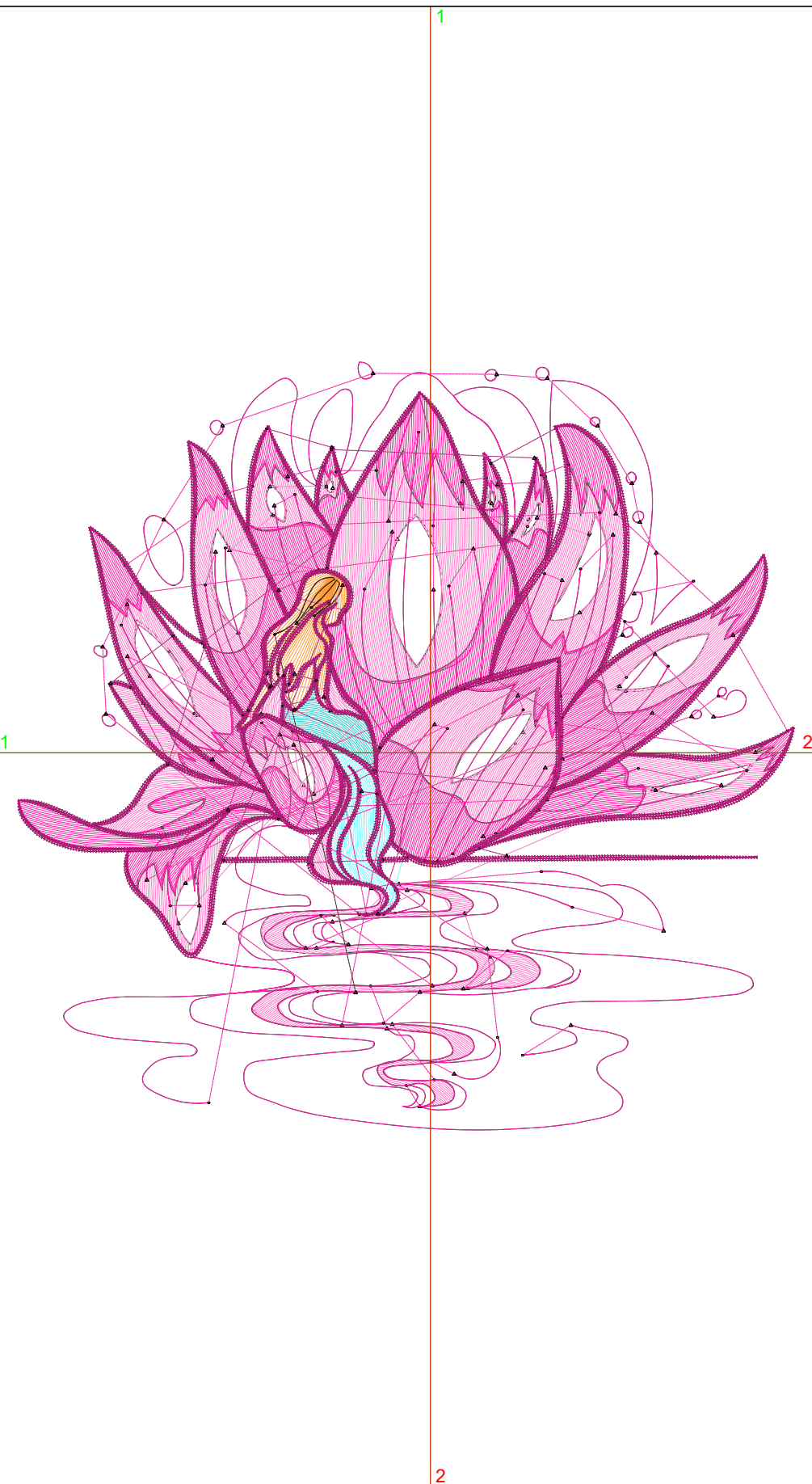
Title:

Stitches: 23,711
 Height: 4.95 in
 Width: 5.01 in
 Colors: 8
 Colorway: Colorway 1
 Zoom: 1:1

Machine format: Tajima
 Color changes: 7
 Stops: 8
 Trims: 161
 Appliqués: 0
 Left: 67.6 mm
 Right: 59.7 mm
 Up: 64.0 mm
 Down: 61.7 mm
 EndX: 0.00 in
 EndY: 0.00 in
 Area: 24.80 in²
 Max stitch: 6.9 mm
 Min stitch: 0.0 mm
 Max jump: 6.9 mm
 Total thread: 324.89ft
 Total bobbin: 98.77ft

Stop Sequence:

#	N#	Color	St.	Code	Name	Chart
1.	3		290		R124 G251 B255	
2.	5		206	5	Aqua	Default
3.	12		294	12	Orange	Default
4.	9		1,083	9	White	Default
5.	15		5,729	15	Pink	Default
6.	1		6,695		R255 G33 B170	
7.	4		64		R54 G36 B18	
8.	2		9,348		R184 G24 B122	



Production Worksheet

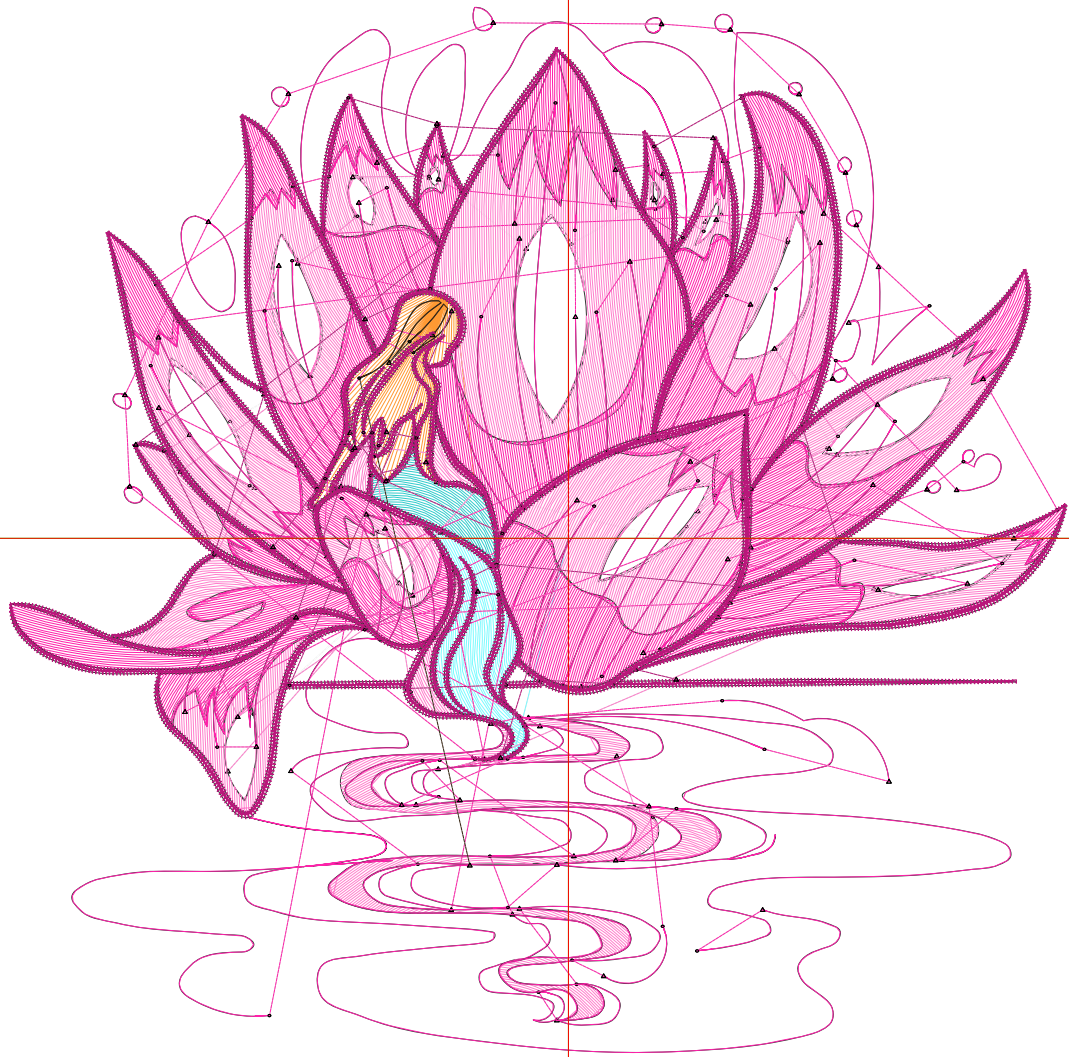
Wilcom EmbroideryStudio - Designing



Design: **5**

Title:

Stitches: 26,436
Height: 5.44 in
Width: 5.51 in
Colors: 8
Colorway: Colorway 1
Zoom: 1:1



Production Worksheet

Wilcom EmbroideryStudio - Designing



Design: **5**

Title:

Stitches: 26,436
 Height: 5.44 in
 Width: 5.51 in
 Colors: 8
 Colorway: Colorway 1
 Zoom: 1:1

Machine format: Tajima
 Color changes: 7
 Stops: 8
 Trims: 164
 Appliqués: 0
 Left: 74.0 mm
 Right: 66.0 mm
 Up: 70.2 mm
 Down: 68.0 mm
 EndX: 0.00 in
 EndY: 0.00 in
 Area 29.99 in²
 Max stitch: 7.0 mm
 Min stitch: 0.0 mm
 Max jump: 7.0 mm
 Total thread: 370.04ft
 Total bobbin: 114.94ft

Stop Sequence:

#	N#	Color	St.	Code	Name	Chart
1.	3		334		R124 G251 B255	
2.	5		238	5	Aqua	Default
3.	12		334	12	Orange	Default
4.	9		1,253	9	White	Default
5.	15		6,532	15	Pink	Default
6.	1		7,453		R255 G33 B170	
7.	4		67		R54 G36 B18	
8.	2		10,223		R184 G24 B122	

Production Worksheet

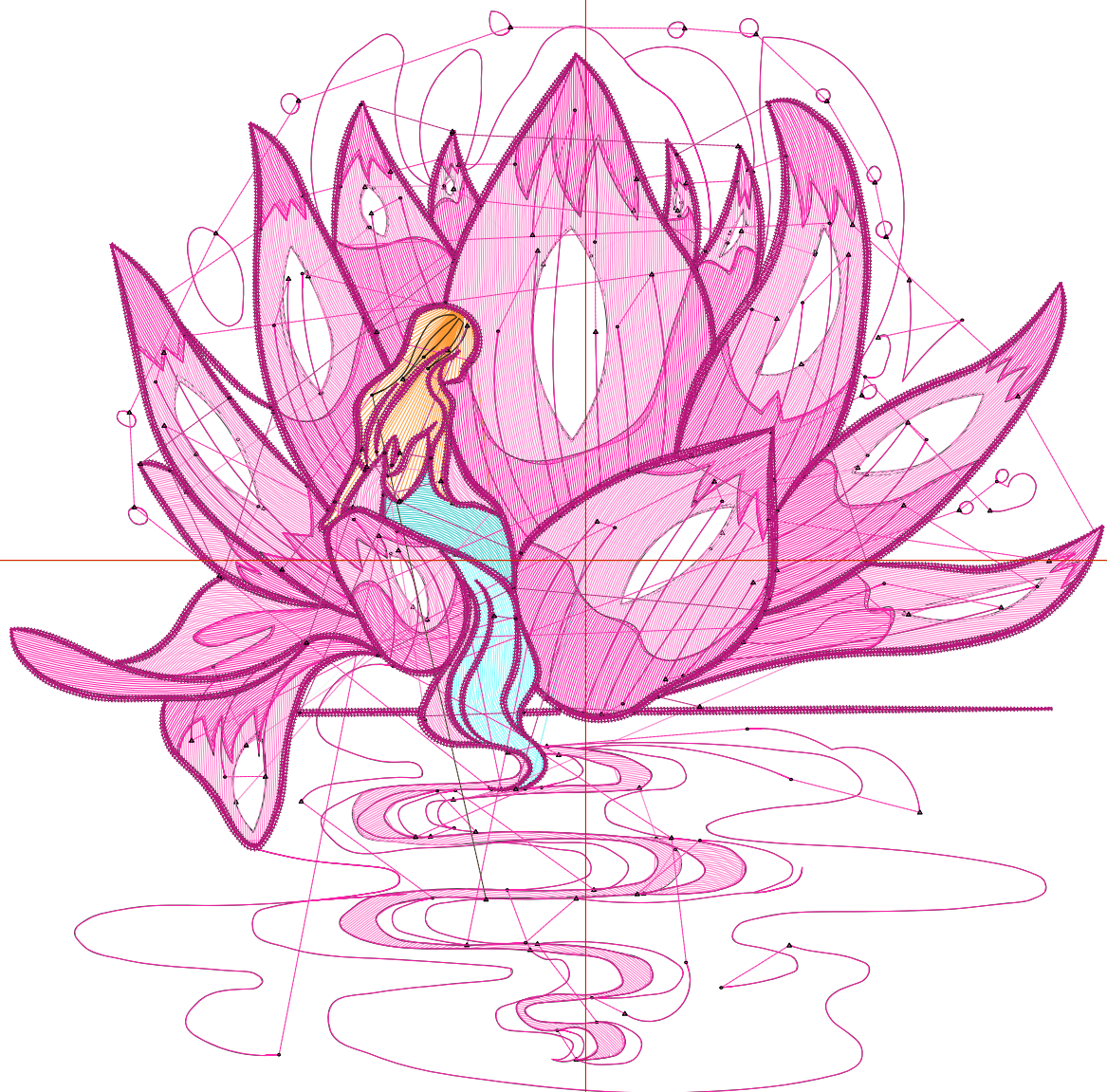
Wilcom EmbroideryStudio - Designing



Design: **6**

Title:

Stitches: 29,588
Height: 5.94 in
Width: 6.01 in
Colors: 8
Colorway: Colorway 1
Zoom: 1:1



Production Worksheet

Wilcom EmbroideryStudio - Designing



Design: **6**

Title:

Stitches: 29,588
 Height: 5.94 in
 Width: 6.01 in
 Colors: 8
 Colorway: Colorway 1
 Zoom: 1:1

Machine format: Tajima
 Color changes: 7
 Stops: 8
 Trims: 164
 Appliqués: 0
 Left: 80.3 mm
 Right: 72.4 mm
 Up: 76.5 mm
 Down: 74.3 mm
 EndX: 0.00 in
 EndY: 0.00 in
 Area 35.69 in²
 Max stitch: 7.0 mm
 Min stitch: 0.0 mm
 Max jump: 7.0 mm
 Total thread: 421.28ft
 Total bobbin: 133.04ft

Stop Sequence:

#	N#	Color	St.	Code	Name	Chart
1.	3		382		R124 G251 B255	
2.	5		268	5	Aqua	Default
3.	12		376	12	Orange	Default
4.	9		1,412	9	White	Default
5.	15		7,614	15	Pink	Default
6.	1		8,323		R255 G33 B170	
7.	4		69		R54 G36 B18	
8.	2		11,142		R184 G24 B122	

Production Worksheet

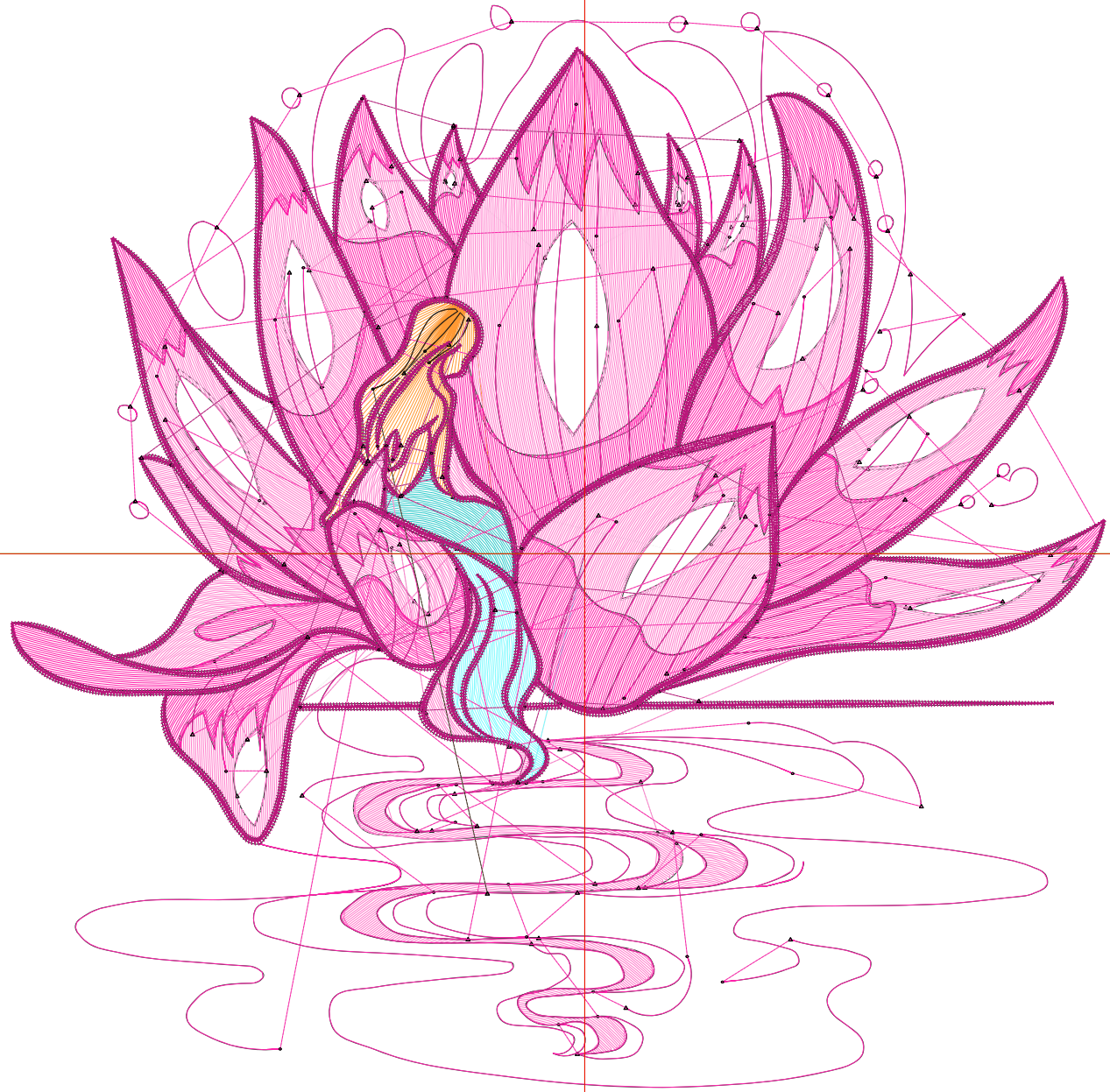
Wilcom EmbroideryStudio - Designing



Design: **6**

Title:

Stitches: 32,628
Height: 6.43 in
Width: 6.51 in
Colors: 8
Colorway: Colorway 1
Zoom: 1:1



Production Worksheet

Wilcom EmbroideryStudio - Designing



Design: **6**

Title:

Stitches: 32,628
 Height: 6.43 in
 Width: 6.51 in
 Colors: 8
 Colorway: Colorway 1
 Zoom: 1:1

Machine format: Tajima
 Color changes: 7
 Stops: 8
 Trims: 165
 Appliqués: 0
 Left: 86.7 mm
 Right: 78.7 mm
 Up: 82.8 mm
 Down: 80.6 mm
 EndX: 0.00 in
 EndY: 0.00 in
 Area 41.88 in²
 Max stitch: 6.9 mm
 Min stitch: 0.0 mm
 Max jump: 6.9 mm
 Total thread: 472.73ft
 Total bobbin: 151.71ft

Stop Sequence:

#	N#	Color	St.	Code	Name	Chart
1.	3		432		R124 G251 B255	
2.	5		305	5	Aqua	Default
3.	12		405	12	Orange	Default
4.	9		1,578	9	White	Default
5.	15		8,616	15	Pink	Default
6.	1		9,178		R255 G33 B170	
7.	4		72		R54 G36 B18	
8.	2		12,040		R184 G24 B122	

Production Worksheet

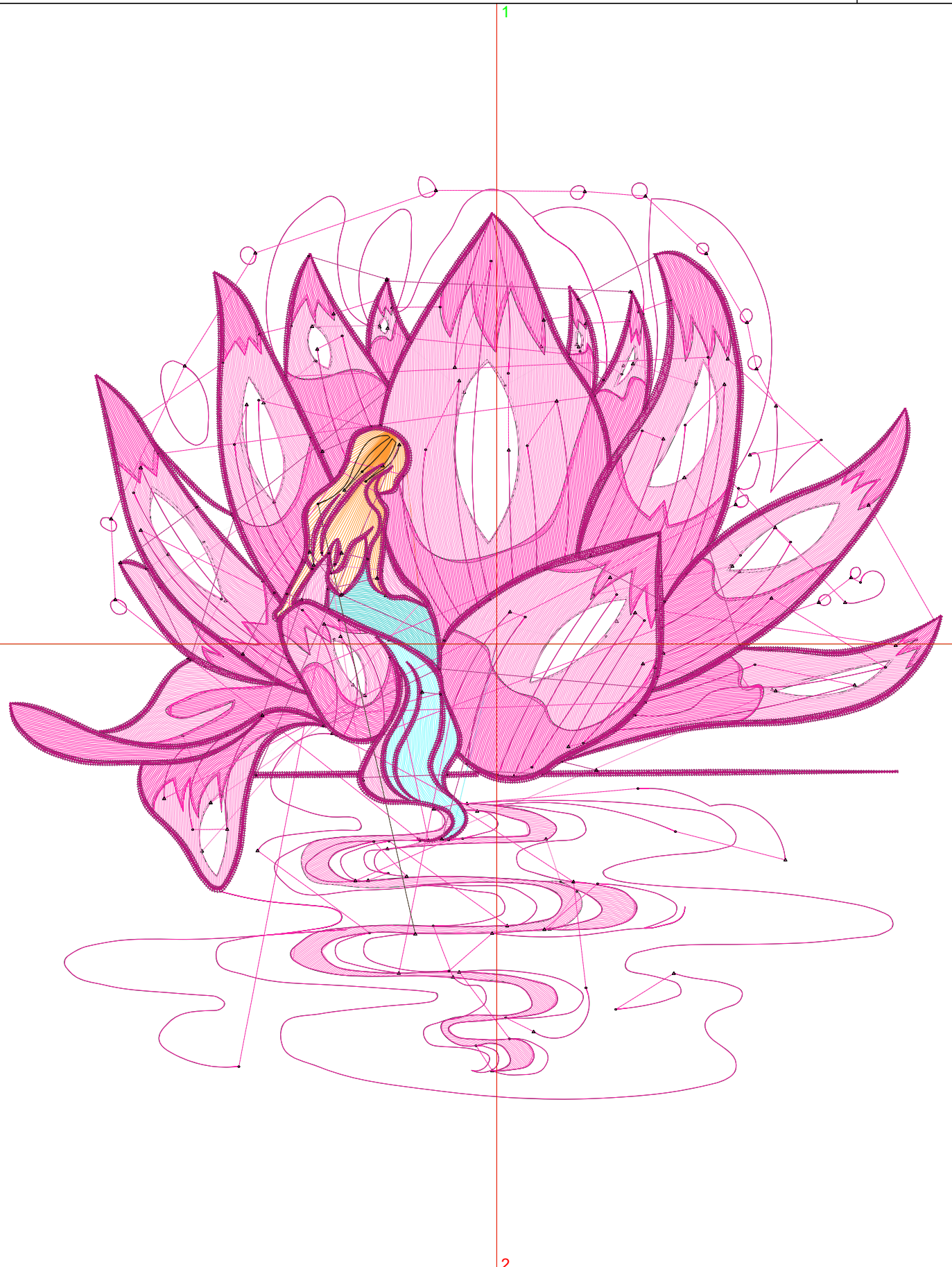
Wilcom EmbroideryStudio - Designing



Design: **7**

Title:

Stitches: 35,733
Height: 6.93 in
Width: 7.01 in
Colors: 8
Colorway: Colorway 1
Zoom: 1:1



Production Worksheet

Wilcom EmbroideryStudio - Designing



Design: **7**

Title:

Stitches: 35,733
 Height: 6.93 in
 Width: 7.01 in
 Colors: 8
 Colorway: Colorway 1
 Zoom: 1:1

Machine format: Tajima
 Color changes: 7
 Stops: 8
 Trims: 167
 Appliqués: 0
 Left: 93.0 mm
 Right: 85.1 mm
 Up: 89.1 mm
 Down: 86.8 mm
 EndX: 0.00 in
 EndY: 0.00 in
 Area 48.57 in²
 Max stitch: 7.0 mm
 Min stitch: 0.0 mm
 Max jump: 7.0 mm
 Total thread: 527.13ft
 Total bobbin: 171.87ft

Stop Sequence:

#	N#	Color	St.	Code	Name	Chart
1.	3		485		R124 G251 B255	
2.	5		345	5	Aqua	Default
3.	12		501	12	Orange	Default
4.	9		1,806	9	White	Default
5.	15		9,467	15	Pink	Default
6.	1		10,072		R255 G33 B170	
7.	4		75		R54 G36 B18	
8.	2		12,980		R184 G24 B122	

Production Worksheet

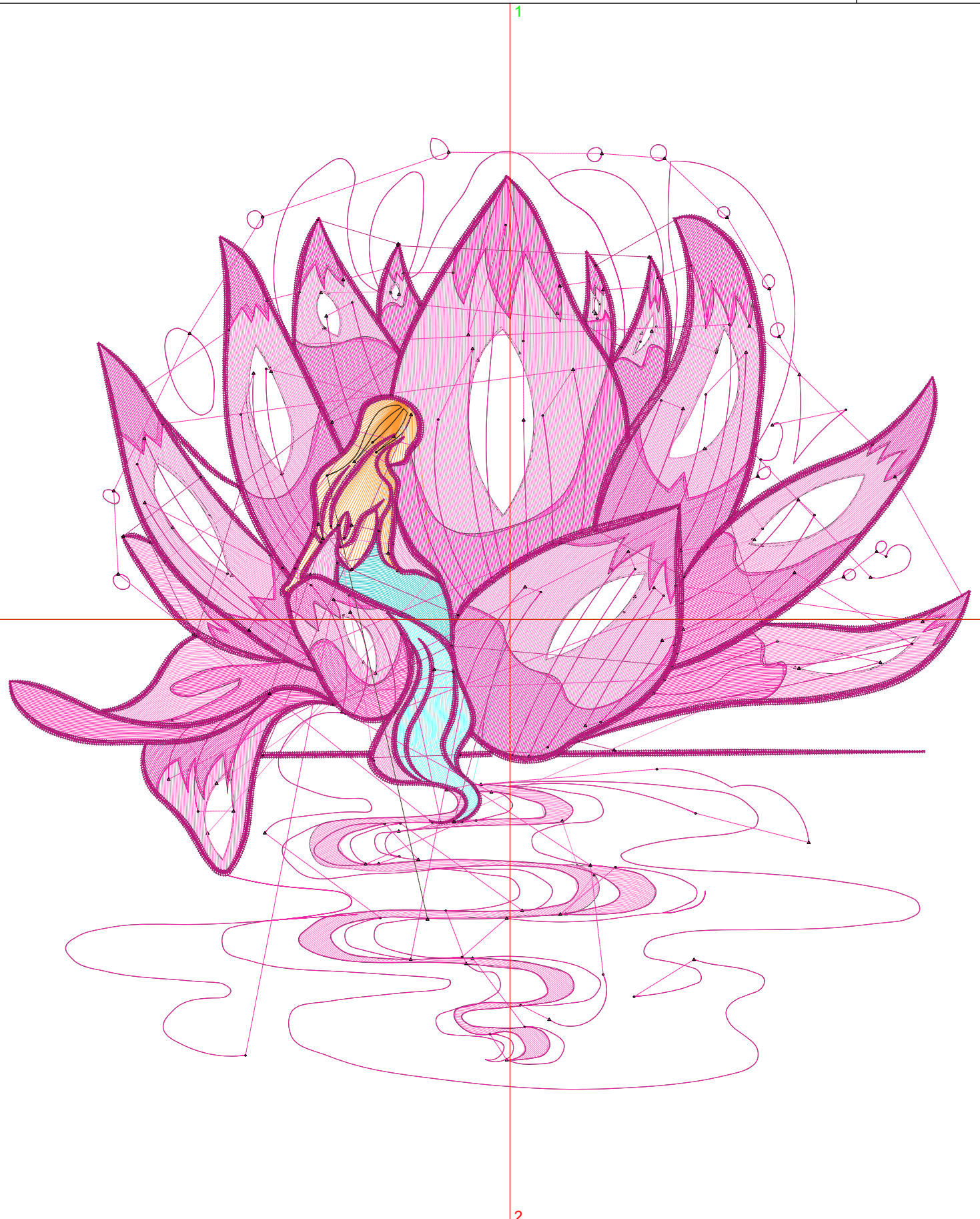
Wilcom EmbroideryStudio - Designing



Design: **7**

Title:

Stitches: 39,030
Height: 7.42 in
Width: 7.51 in
Colors: 8
Colorway: Colorway 1
Zoom: 1:1



Production Worksheet

Wilcom EmbroideryStudio - Designing



Design: **7**

Title:

Stitches: 39,030
 Height: 7.42 in
 Width: 7.51 in
 Colors: 8
 Colorway: Colorway 1
 Zoom: 1:1

Machine format: Tajima
 Color changes: 7
 Stops: 8
 Trims: 167
 Appliqués: 0
 Left: 99.4 mm
 Right: 91.4 mm
 Up: 95.4 mm
 Down: 93.2 mm
 EndX: 0.00 in
 EndY: 0.00 in
 Area 55.75 in²
 Max stitch: 7.0 mm
 Min stitch: 0.0 mm
 Max jump: 7.0 mm
 Total thread: 583.63ft
 Total bobbin: 192.53ft

Stop Sequence:

#	N#	Color	St.	Code	Name	Chart
1.	3		537		R124 G251 B255	
2.	5		381	5	Aqua	Default
3.	12		552	12	Orange	Default
4.	9		1,964	9	White	Default
5.	15		10,668	15	Pink	Default
6.	1		11,033		R255 G33 B170	
7.	4		77		R54 G36 B18	
8.	2		13,816		R184 G24 B122	