

# Production Worksheet

Wilcom EmbroideryStudio - Designing



Design: **3**

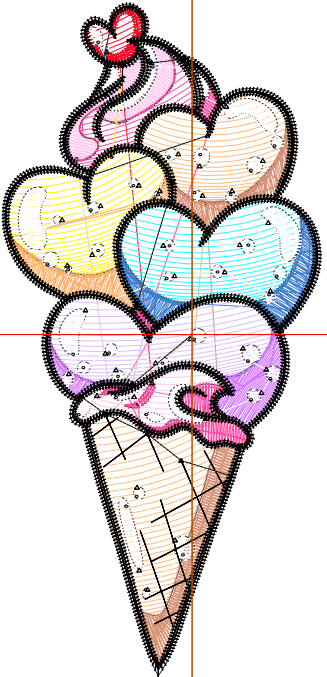
Title:

Stitches: 8,421  
 Height: 3.51 in  
 Width: 1.67 in  
 Colors: 13  
 Colorway: Colorway 1  
 Zoom: 1:1

Machine format: Tajima  
 Color changes: 12  
 Stops: 13  
 Trims: 68  
 Appliqués: 0  
 Left: 25.2 mm  
 Right: 17.1 mm  
 Up: 43.9 mm  
 Down: 45.3 mm  
 EndX: 0.00 in  
 EndY: 0.00 in  
 Area 5.85 in<sup>2</sup>  
 Max stitch: 9.1 mm  
 Min stitch: 0.0 mm  
 Max jump: 7.0 mm  
 Total thread: 113.91ft  
 Total bobbin: 32.23ft

Stop Sequence:

#	N#	Color	St.	Code	Name	Chart
1.	3		499		R255 G187 B120	
2.	4		476		R214 G144 B117	
3.	2		382		R255 G199 B237	
4.	1		522		R255 G72 B160	
5.	14		215		R255 G4 B34	
6.	9		196		R255 G247 B1	
7.	6		306		R255 G175 B106	
8.	12		208		R42 G248 B255	
9.	5		380		R60 G125 B209	
10.	7		211		R218 G191 B255	
11.	10		282		R211 G117 B255	
12.	15		1,679	15	Pink	Default
13.	8		3,063	8	Black	Default



# Production Worksheet

Wilcom EmbroideryStudio - Designing



Design: **4**

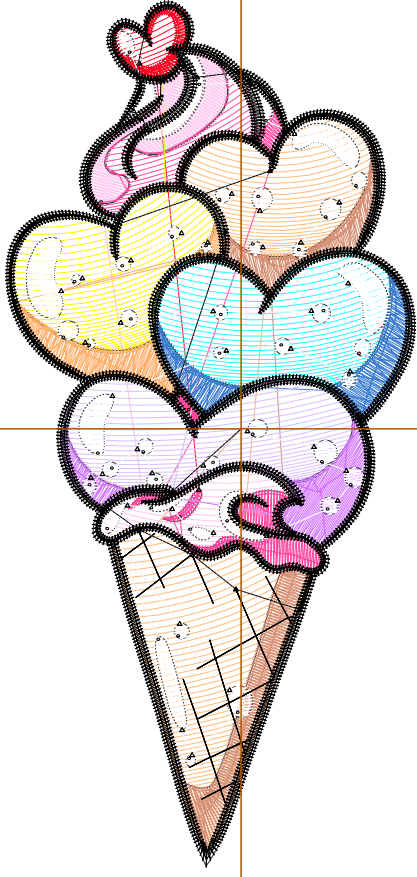
Title:

Stitches: 10,848  
 Height: 4.51 in  
 Width: 2.14 in  
 Colors: 13  
 Colorway: Colorway 1  
 Zoom: 1:1

Machine format: Tajima  
 Color changes: 12  
 Stops: 13  
 Trims: 71  
 Appliqués: 0  
 Left: 31.2 mm  
 Right: 23.1 mm  
 Up: 56.6 mm  
 Down: 58.0 mm  
 EndX: 0.00 in  
 EndY: 0.00 in  
 Area 9.65 in<sup>2</sup>  
 Max stitch: 11.8 mm  
 Min stitch: 0.0 mm  
 Max jump: 6.8 mm  
 Total thread: 157.71ft  
 Total bobbin: 48.75ft

Stop Sequence:

#	N#	Color	St.	Code	Name	Chart
1.	3		737		R255 G187 B120	
2.	4		623		R214 G144 B117	
3.	2		502		R255 G199 B237	
4.	1		639		R255 G72 B160	
5.	14		278		R255 G4 B34	
6.	9		289		R255 G247 B1	
7.	6		387		R255 G175 B106	
8.	12		299		R42 G248 B255	
9.	5		486		R60 G125 B209	
10.	7		308		R218 G191 B255	
11.	10		380		R211 G117 B255	
12.	15		2,041	15	Pink	Default
13.	8		3,877	8	Black	Default



# Production Worksheet

Wilcom EmbroideryStudio - Designing

Stitches: 13,470  
 Height: 5.51 in  
 Width: 2.61 in  
 Colors: 13  
 Colorway: Colorway 1  
 Zoom: 1:1



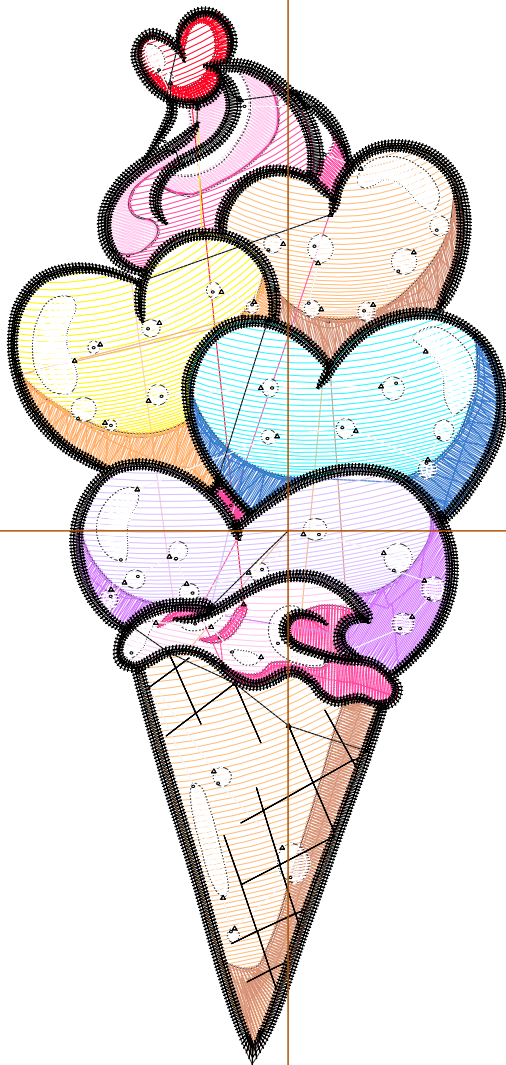
Design: **5**

Title:

Machine format: Tajima  
 Color changes: 12  
 Stops: 13  
 Trims: 72  
 Appliqués: 0  
 Left: 37.2 mm  
 Right: 29.1 mm  
 Up: 69.3 mm  
 Down: 70.7 mm  
 EndX: 0.00 in  
 EndY: 0.00 in  
 Area: 14.39 in<sup>2</sup>  
 Max stitch: 12.0 mm  
 Min stitch: 0.0 mm  
 Max jump: 7.0 mm  
 Total thread: 209.17ft  
 Total bobbin: 69.05ft

Stop Sequence:

#	N#	Color	St.	Code	Name	Chart
1.	3		1,033	R255	G187 B120	
2.	4		761	R214	G144 B117	
3.	2		619	R255	G199 B237	
4.	1		817	R255	G72 B160	
5.	14		348	R255	G4 B34	
6.	9		396	R255	G247 B1	
7.	6		490	R255	G175 B106	
8.	12		432	R42	G248 B255	
9.	5		607	R60	G125 B209	
10.	7		422	R218	G191 B255	
11.	10		492	R211	G117 B255	
12.	15		2,358	15	Pink	Default
13.	8		4,693	8	Black	Default



# Production Worksheet

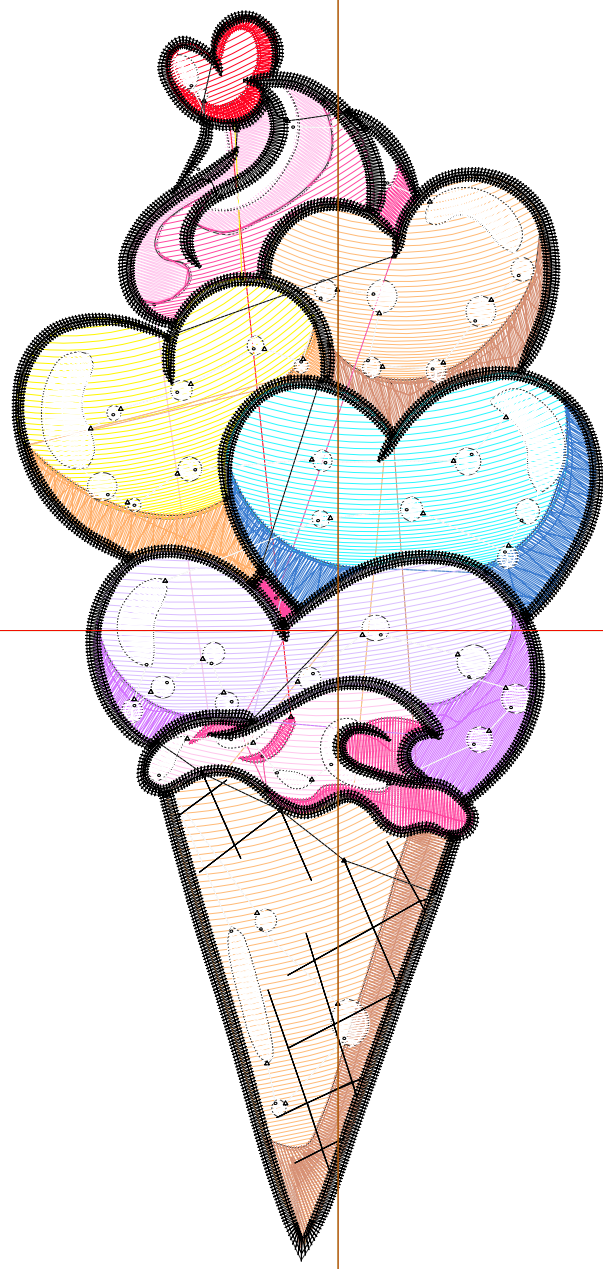
Wilcom EmbroideryStudio - Designing



Design: **6**

Title:

Stitches: 16,284  
 Height: 6.51 in  
 Width: 3.08 in  
 Colors: 13  
 Colorway: Colorway 1  
 Zoom: 1:1



Machine format: Tajima  
 Color changes: 12  
 Stops: 13  
 Trims: 72  
 Appliqués: 0  
 Left: 43.2 mm  
 Right: 35.1 mm  
 Up: 82.0 mm  
 Down: 83.4 mm  
 EndX: 0.00 in  
 EndY: 0.00 in  
 Area: 20.07 in<sup>2</sup>  
 Max stitch: 11.8 mm  
 Min stitch: 0.0 mm  
 Max jump: 7.0 mm  
 Total thread: 267.38ft  
 Total bobbin: 92.60ft

Stop Sequence:

#	N#	Color	St.	Code	Name	Chart
1.	3		1,379		R255 G187 B120	
2.	4		927		R214 G144 B117	
3.	2		764		R255 G199 B237	
4.	1		920		R255 G72 B160	
5.	14		415		R255 G4 B34	
6.	9		537		R255 G247 B1	
7.	6		608		R255 G175 B106	
8.	12		569		R42 G248 B255	
9.	5		760		R60 G125 B209	
10.	7		553		R218 G191 B255	
11.	10		631		R211 G117 B255	
12.	15		2,693	15	Pink	Default
13.	8		5,526	8	Black	Default

# Production Worksheet

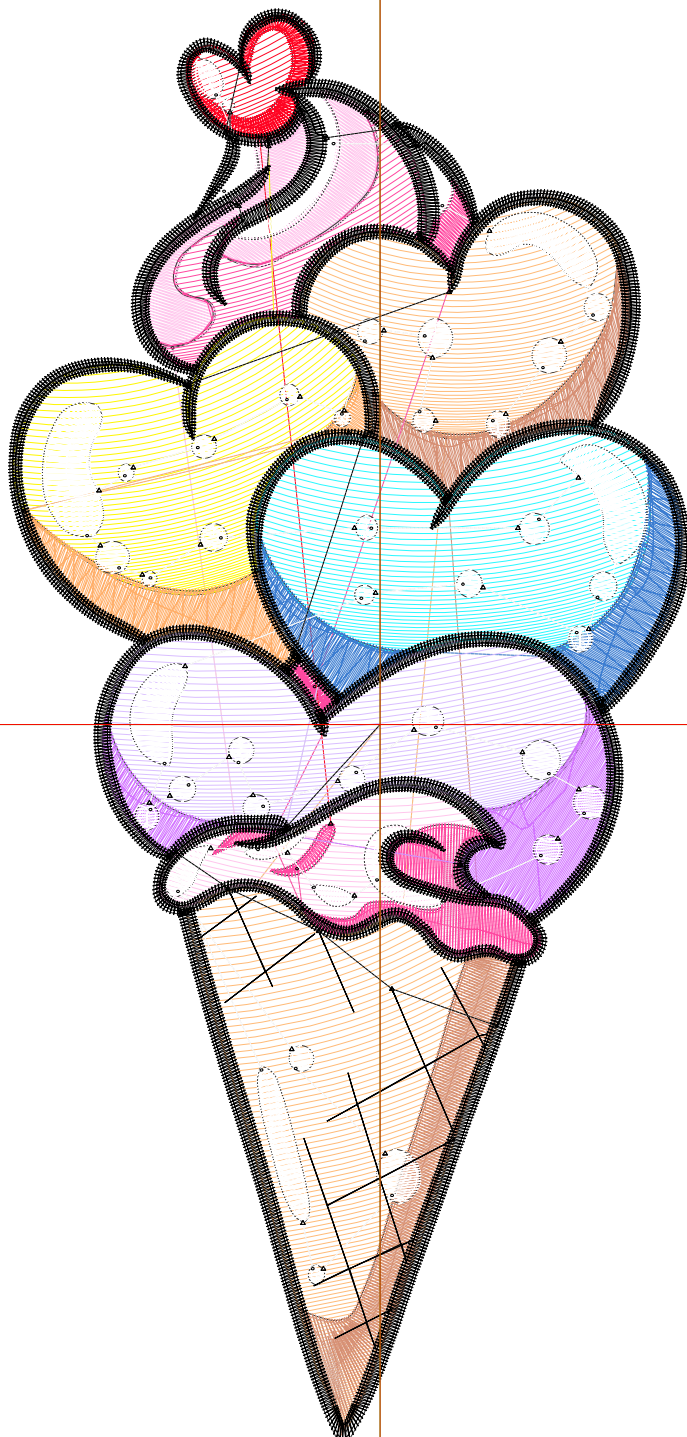
Wilcom EmbroideryStudio - Designing



Design: **7**

Title:

Stitches: 19,355  
 Height: 7.51 in  
 Width: 3.55 in  
 Colors: 13  
 Colorway: Colorway 1  
 Zoom: 1:1



Machine format: Tajima  
 Color changes: 12  
 Stops: 13  
 Trims: 74  
 Appliqués: 0  
 Left: 49.2 mm  
 Right: 41.1 mm  
 Up: 94.7 mm  
 Down: 96.1 mm  
 EndX: 0.00 in  
 EndY: 0.00 in  
 Area: 26.70 in<sup>2</sup>  
 Max stitch: 11.9 mm  
 Min stitch: 0.0 mm  
 Max jump: 7.0 mm  
 Total thread: 334.03ft  
 Total bobbin: 120.15ft

Stop Sequence:

#	N#	Color	St.	Code	Name	Chart
1.	3		1,770		R255 G187 B120	
2.	4		1,103		R214 G144 B117	
3.	2		905		R255 G199 B237	
4.	1		1,074		R255 G72 B160	
5.	14		486		R255 G4 B34	
6.	9		690		R255 G247 B1	
7.	6		739		R255 G175 B106	
8.	12		749		R42 G248 B255	
9.	5		919		R60 G125 B209	
10.	7		706		R218 G191 B255	
11.	10		780		R211 G117 B255	
12.	15		3,051	15	Pink	Default
13.	8		6,381	8	Black	Default