

# Production Worksheet

Wilcom EmbroideryStudio - Designing



Design: **3**

Title:

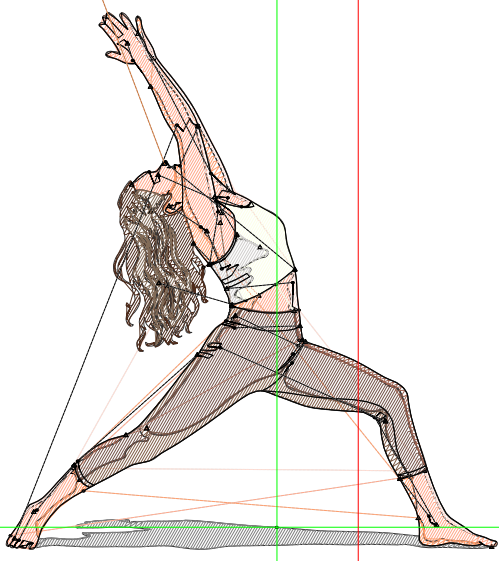
Stitches: 7,766  
 Height: 3.50 in  
 Width: 2.55 in  
 Colors: 13  
 Colorway: Colorway 1  
 Zoom: 1:1

Machine format: Tajima  
 Color changes: 12  
 Stops: 13  
 Trims: 62  
 Appliqués: 0  
 Left: 35.7 mm  
 Right: 29.1 mm  
 Up: 86.1 mm  
 Down: 2.9 mm  
 EndX: 0.42 in  
 EndY: 2.88 in  
 Area: 8.94 in<sup>2</sup>  
 Max stitch: 11.0 mm  
 Min stitch: 0.0 mm  
 Max jump: 6.9 mm  
 Total thread: 90.25ft  
 Total bobbin: 20.76ft

Stop Sequence:

#	N#	Color	St.	Code	Name	Chart
1.	2		484	2	Blue	Default
2.	12		678		R255 G168 B139	
3.	6		403		R255 G158 B109	
4.	1		372		R255 G222 B213	
5.	3		390		R128 G93 B71	
6.	13		530		R115 G83 B73	
7.	11		165		R158 G98 B80	
8.	4		170		R252 G255 B232	
9.	5		101		R209 G207 B205	
10.	9		809		R77 G43 B27	
11.	10		481		R130 G107 B87	
12.	8		654	8	Black	Default
13.	7		2,527		R204 G115 B55	

*Embrace the journey,  
not perfection*



# Production Worksheet

Wilcom EmbroideryStudio - Designing



Design: **4**

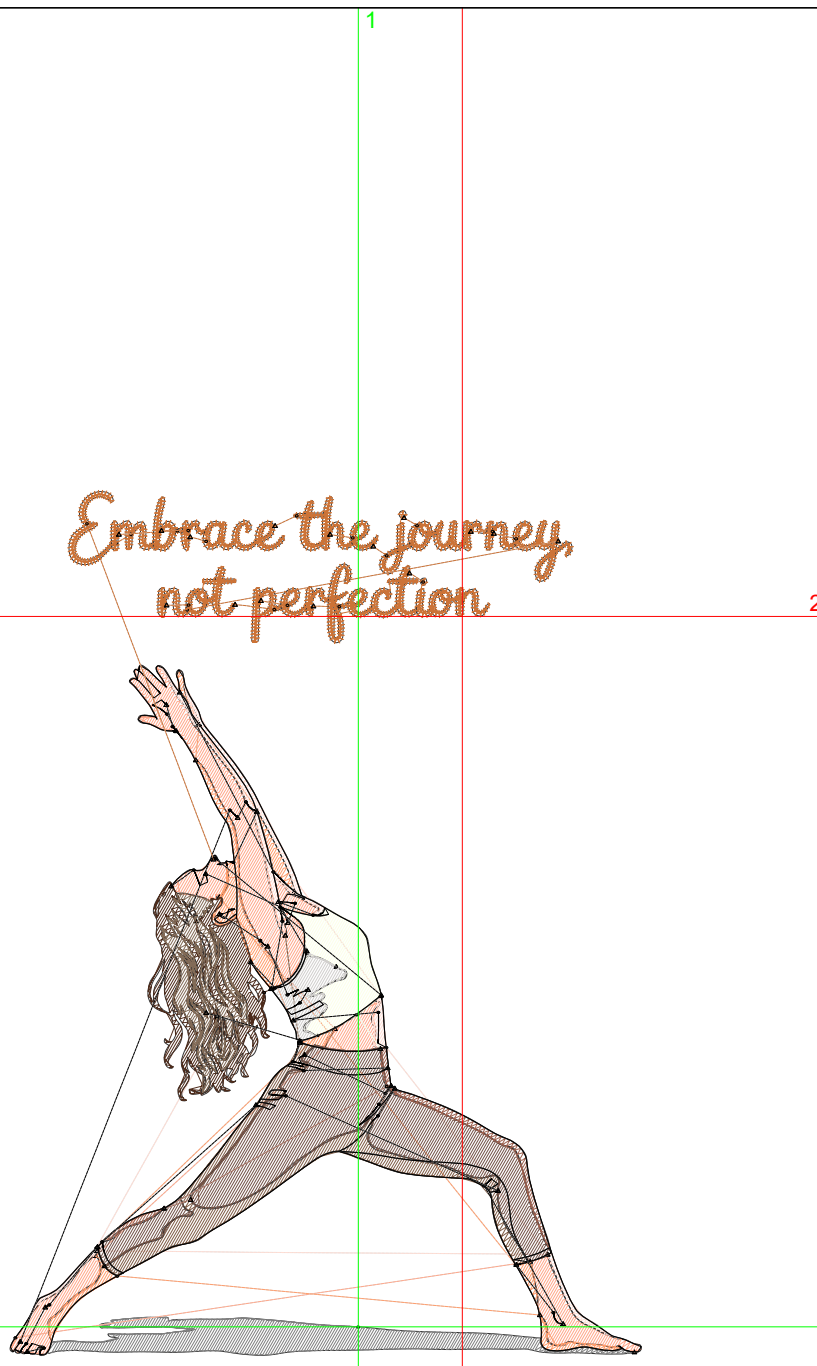
Title:

Stitches: 10,426  
 Height: 4.50 in  
 Width: 3.28 in  
 Colors: 13  
 Colorway: Colorway 1  
 Zoom: 1:1

Machine format: Tajima  
 Color changes: 12  
 Stops: 13  
 Trims: 71  
 Appliqués: 0  
 Left: 46.0 mm  
 Right: 37.4 mm  
 Up: 110.7 mm  
 Down: 3.7 mm  
 EndX: 0.54 in  
 EndY: 3.70 in  
 Area: 14.79 in<sup>2</sup>  
 Max stitch: 7.0 mm  
 Min stitch: 0.0 mm  
 Max jump: 7.0 mm  
 Total thread: 125.41ft  
 Total bobbin: 31.25ft

Stop Sequence:

#	N#	Color	St.	Code	Name	Chart
1.	2		680	2	Blue	Default
2.	12		944		R255 G168 B139	
3.	6		550		R255 G158 B109	
4.	1		494		R255 G222 B213	
5.	3		573		R128 G93 B71	
6.	13		781		R115 G83 B73	
7.	11		251		R158 G98 B80	
8.	4		248		R252 G255 B232	
9.	5		141		R209 G207 B205	
10.	9		1,094		R77 G43 B27	
11.	10		732		R130 G107 B87	
12.	8		779	8	Black	Default
13.	7		3,157		R204 G115 B55	



# Production Worksheet

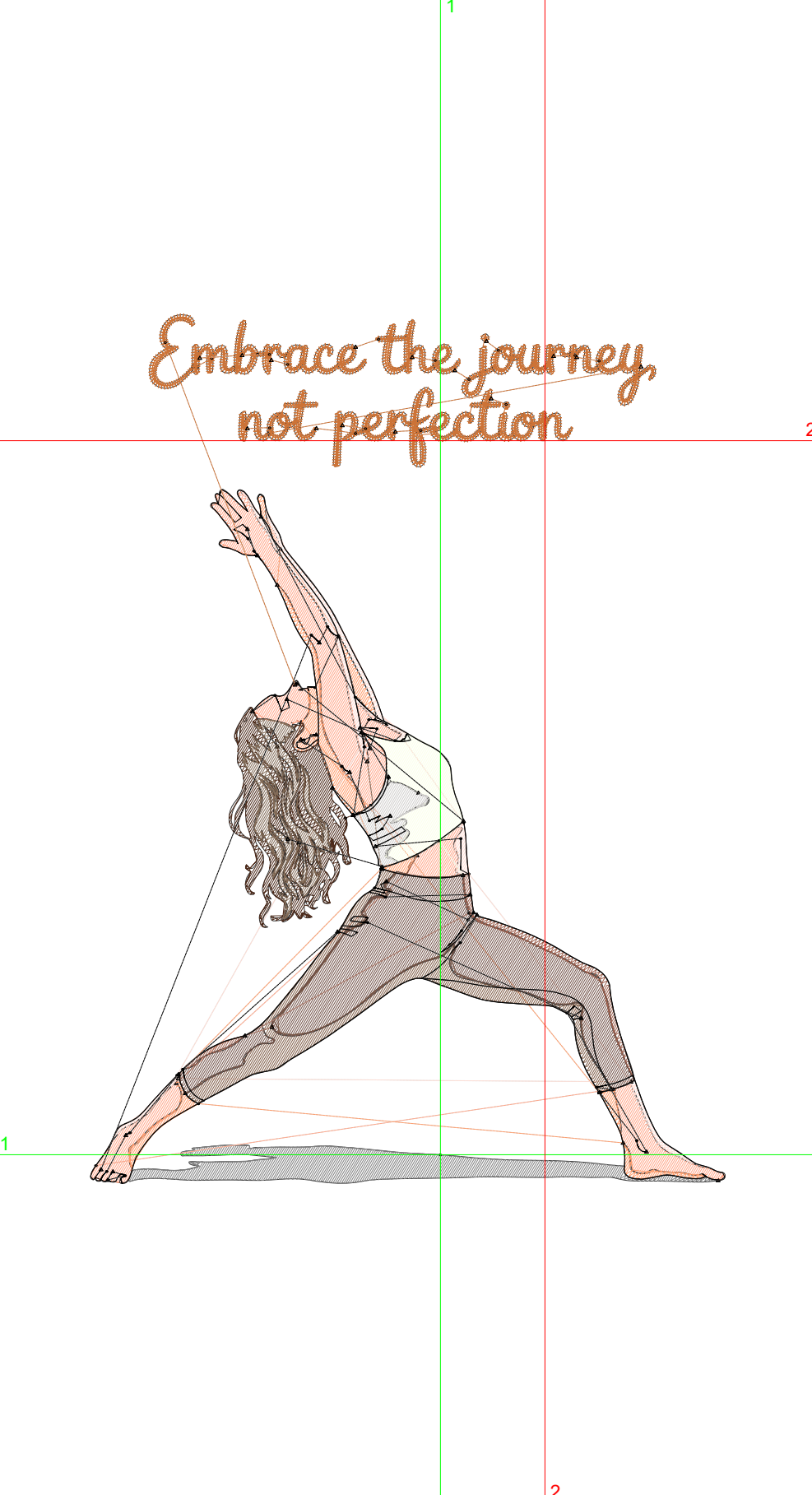
Wilcom EmbroideryStudio - Designing



Design: **5**

Title:

Stitches: 12,984  
 Height: 5.51 in  
 Width: 4.02 in  
 Colors: 13  
 Colorway: Colorway 1  
 Zoom: 1:1



Machine format: Tajima  
 Color changes: 12  
 Stops: 13  
 Trims: 75  
 Appliqués: 0  
 Left: 56.3 mm  
 Right: 45.7 mm  
 Up: 135.2 mm  
 Down: 4.6 mm  
 EndX: 0.66 in  
 EndY: 4.52 in  
 Area: 22.11 in<sup>2</sup>  
 Max stitch: 6.9 mm  
 Min stitch: 0.0 mm  
 Max jump: 6.9 mm  
 Total thread: 161.23ft  
 Total bobbin: 42.53ft

Stop Sequence:

#	N#	Color	St.	Code	Name	Chart
1.	2		862	2	Blue	Default
2.	12		1,227		R255 G168 B139	
3.	6		692		R255 G158 B109	
4.	1		659		R255 G222 B213	
5.	3		736		R128 G93 B71	
6.	13		1,054		R115 G83 B73	
7.	11		333		R158 G98 B80	
8.	4		318		R252 G255 B232	
9.	5		180		R209 G207 B205	
10.	9		1,371		R77 G43 B27	
11.	10		902		R130 G107 B87	
12.	8		882	8	Black	Default
13.	7		3,766		R204 G115 B55	

# Production Worksheet

Wilcom EmbroideryStudio - Designing



Design: **6**

Title:

Stitches: 15,738

Height: 6.50 in

Width: 4.75 in

Colors: 13

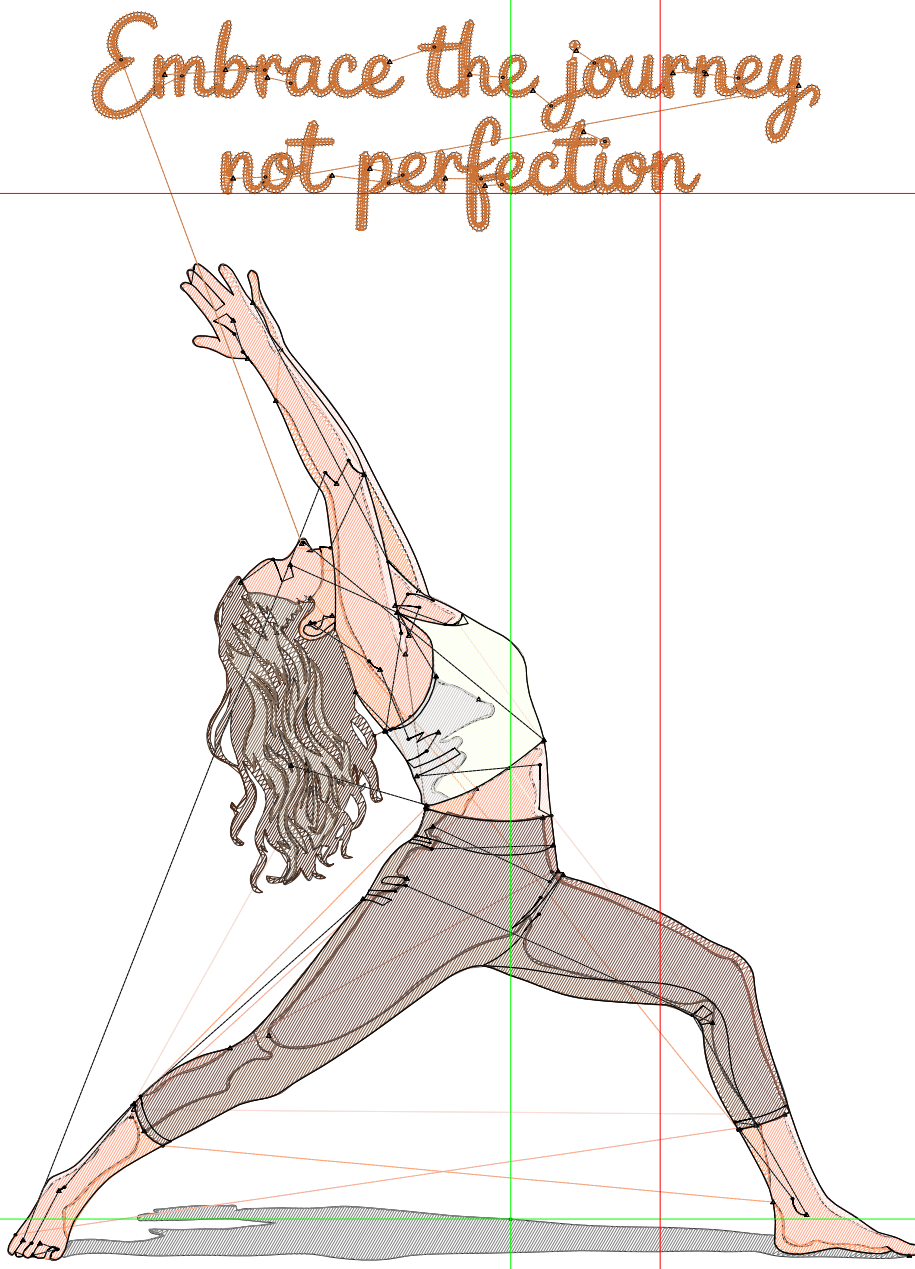
Colorway: Colorway 1

Zoom: 1:1

Machine format: Tajima  
 Color changes: 12  
 Stops: 13  
 Trims: 77  
 Appliqués: 0  
 Left: 66.5 mm  
 Right: 54.1 mm  
 Up: 159.8 mm  
 Down: 5.4 mm  
 EndX: 0.78 in  
 EndY: 5.34 in  
 Area: 30.86 in<sup>2</sup>  
 Max stitch: 6.9 mm  
 Min stitch: 0.0 mm  
 Max jump: 6.9 mm  
 Total thread: 202.93ft  
 Total bobbin: 56.53ft

Stop Sequence:

#	N#	Color	St.	Code	Name	Chart
1.	2		1,082	2	Blue	Default
2.	12		1,537		R255 G168 B139	
3.	6		823		R255 G158 B109	
4.	1		822		R255 G222 B213	
5.	3		919		R128 G93 B71	
6.	13		1,360		R115 G83 B73	
7.	11		413		R158 G98 B80	
8.	4		403		R252 G255 B232	
9.	5		227		R209 G207 B205	
10.	9		1,745		R77 G43 B27	
11.	10		1,126		R130 G107 B87	
12.	8		952	8	Black	Default
13.	7		4,327		R204 G115 B55	



# Production Worksheet

Wilcom EmbroideryStudio - Designing

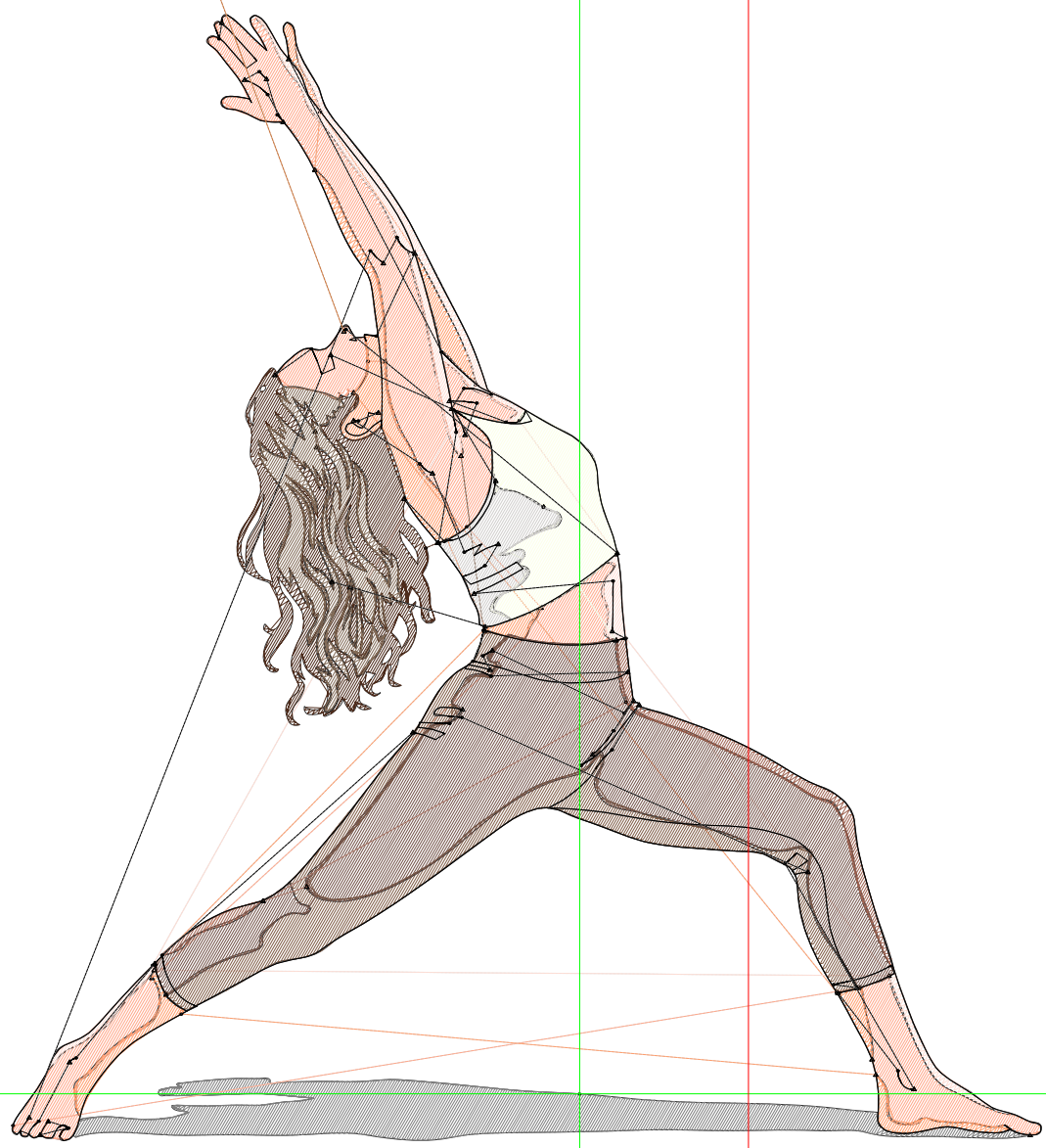


Design: **7**

Title:

Stitches: 18,583  
Height: 7.51 in  
Width: 5.47 in  
Colors: 13  
Colorway: Colorway 1  
Zoom: 1:1

*Embrace the journey,  
not perfection*



# Production Worksheet

Wilcom EmbroideryStudio - Designing



Design: **7**

Title:

Stitches: 18,583  
 Height: 7.51 in  
 Width: 5.47 in  
 Colors: 13  
 Colorway: Colorway 1  
 Zoom: 1:1

Machine format: Tajima  
 Color changes: 12  
 Stops: 13  
 Trims: 85  
 Appliqués: 0  
 Left: 76.7 mm  
 Right: 62.3 mm  
 Up: 184.3 mm  
 Down: 6.3 mm  
 EndX: 0.90 in  
 EndY: 6.16 in  
 Area 41.08 in<sup>2</sup>  
 Max stitch: 7.5 mm  
 Min stitch: 0.0 mm  
 Max jump: 6.9 mm  
 Total thread: 246.22ft  
 Total bobbin: 71.12ft

Stop Sequence:

#	N#	Color	St.	Code	Name	Chart
1.	2		1,347	2	Blue	Default
2.	12		1,875		R255 G168 B139	
3.	6		1,007		R255 G158 B109	
4.	1		978		R255 G222 B213	
5.	3		1,098		R128 G93 B71	
6.	13		1,708		R115 G83 B73	
7.	11		503		R158 G98 B80	
8.	4		494		R252 G255 B232	
9.	5		283		R209 G207 B205	
10.	9		2,035		R77 G43 B27	
11.	10		1,273		R130 G107 B87	
12.	8		1,062	8	Black	Default
13.	7		4,918		R204 G115 B55	