

Production Worksheet

Wilcom EmbroideryStudio - Designing



Design: **3**

Title:

Stitches: 14,817
 Height: 3.11 in
 Width: 3.51 in
 Colors: 8
 Colorway: Colorway 1
 Zoom: 1:1

Machine format: Tajima
 Color changes: 8
 Stops: 9
 Trims: 66
 Appliqués: 0
 Left: 46.4 mm
 Right: 42.7 mm
 Up: 44.7 mm
 Down: 34.3 mm
 EndX: 0.00 in
 EndY: 0.00 in
 Area 10.91 in²
 Max stitch: 10.1 mm
 Min stitch: 0.0 mm
 Max jump: 7.0 mm
 Total thread: 193.34ft
 Total bobbin: 55.21ft

Stop Sequence:

#	N#	Color	St.	Code	Name	Chart
1.	6		1,238	6	Dark Magenta	Default
2.	5		2,160	1093	Azure Sea	Madeira Classic 40
3.	2		1,828	1046	Eucalyptus	Madeira Classic 40
4.	4		734	1178	Carrot	Madeira Classic 40
5.	1		1,135		R235 G42 B36	
6.	3		6,404		R255 G174 B134	
7.	6		541	6	Dark Magenta	Default
8.	10		697	1096	Cobalt	Madeira Classic 40
9.	8		78	8	Black	Default



Production Worksheet

Wilcom EmbroideryStudio - Designing



Design: **4**

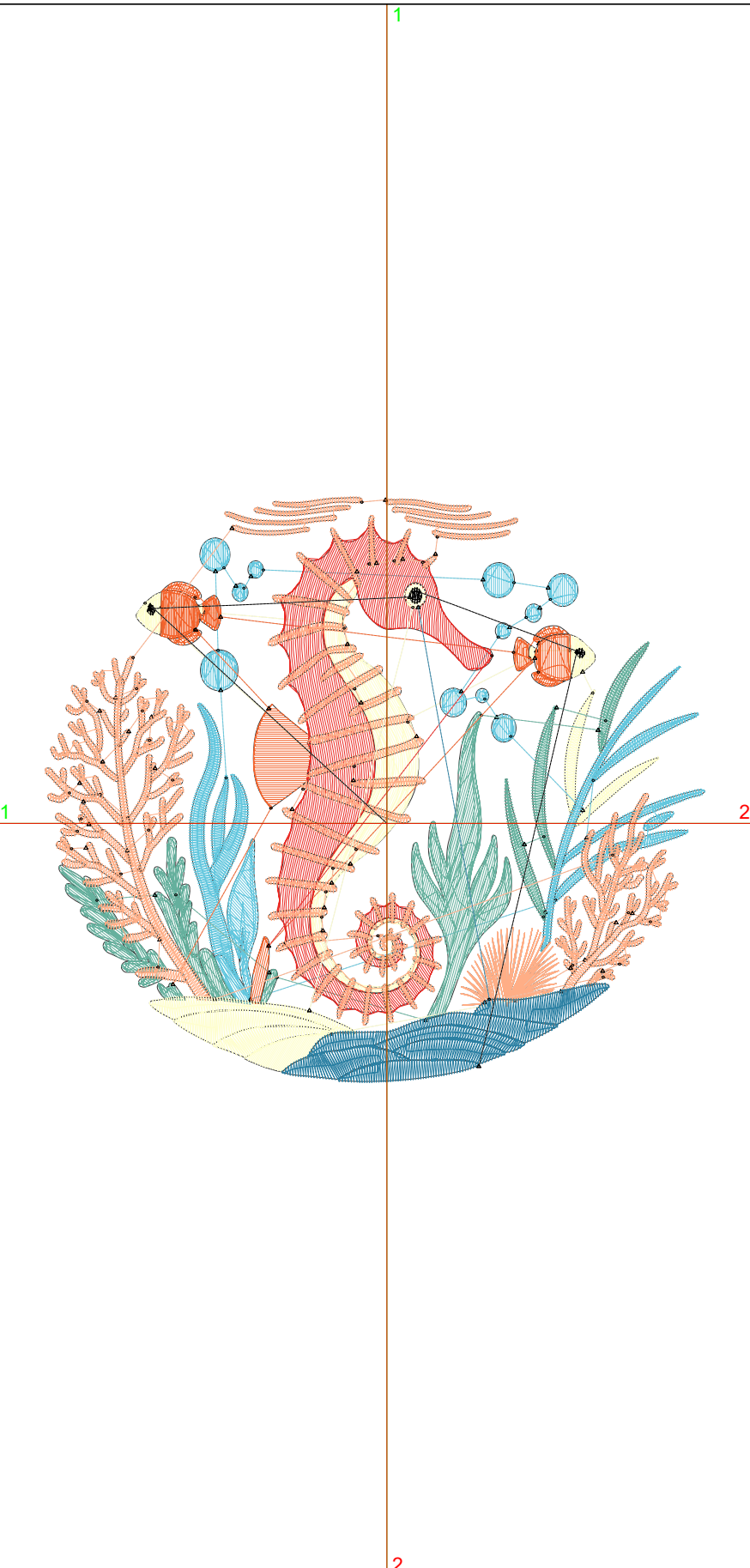
Title:

Stitches: 17,269
 Height: 3.56 in
 Width: 4.01 in
 Colors: 8
 Colorway: Colorway 1
 Zoom: 1:1

Machine format: Tajima
 Color changes: 8
 Stops: 9
 Trims: 76
 Appliqués: 0
 Left: 52.8 mm
 Right: 49.0 mm
 Up: 50.4 mm
 Down: 39.9 mm
 EndX: 0.00 in
 EndY: 0.00 in
 Area: 14.24 in²
 Max stitch: 11.4 mm
 Min stitch: 0.0 mm
 Max jump: 6.9 mm
 Total thread: 232.79ft
 Total bobbin: 69.05ft

Stop Sequence:

#	N#	Color	St.	Code	Name	Chart
1.	6		1,502	6	Dark Magenta	Default
2.	5		2,483	1093	Azure Sea	Madeira Classic 40
3.	2		2,139	1046	Eucalyptus	Madeira Classic 40
4.	4		881	1178	Carrot	Madeira Classic 40
5.	1		1,412		R235 G42 B36	
6.	3		7,292		R255 G174 B134	
7.	6		646	6	Dark Magenta	Default
8.	10		817	1096	Cobalt	Madeira Classic 40
9.	8		95	8	Black	Default



Production Worksheet

Wilcom EmbroideryStudio - Designing



Design: **4**

Title:

Stitches: 19,537
Height: 4.00 in
Width: 4.51 in
Colors: 8
Colorway: Colorway 1
Zoom: 1:1



Production Worksheet

Wilcom EmbroideryStudio - Designing



Design: **4**

Title:

Stitches: 19,537
 Height: 4.00 in
 Width: 4.51 in
 Colors: 8
 Colorway: Colorway 1
 Zoom: 1:1

Machine format: Tajima
 Color changes: 8
 Stops: 9
 Trims: 86
 Appliqués: 0
 Left: 59.1 mm
 Right: 55.4 mm
 Up: 56.0 mm
 Down: 45.6 mm
 EndX: 0.00 in
 EndY: 0.00 in
 Area 18.02 in²
 Max stitch: 7.0 mm
 Min stitch: 0.0 mm
 Max jump: 7.0 mm
 Total thread: 272.34ft
 Total bobbin: 83.67ft

Stop Sequence:

#	N#	Color	St.	Code	Name	Chart
1.	6		1,708	6	Dark Magenta	Default
2.	5		2,779	1093	Azure Sea	Madeira Classic 40
3.	2		2,408	1046	Eucalyptus	Madeira Classic 40
4.	4		1,014	1178	Carrot	Madeira Classic 40
5.	1		1,699		R235 G42 B36	
6.	3		8,157		R255 G174 B134	
7.	6		745	6	Dark Magenta	Default
8.	10		923	1096	Cobalt	Madeira Classic 40
9.	8		102	8	Black	Default

Production Worksheet

Wilcom EmbroideryStudio - Designing



Design: **5**

Title:

Stitches: 21,950
Height: 4.44 in
Width: 5.01 in
Colors: 8
Colorway: Colorway 1
Zoom: 1:1



Production Worksheet

Wilcom EmbroideryStudio - Designing



Design: **5**

Title:

Stitches: 21,950
 Height: 4.44 in
 Width: 5.01 in
 Colors: 8
 Colorway: Colorway 1
 Zoom: 1:1

Machine format: Tajima
 Color changes: 8
 Stops: 9
 Trims: 94
 Appliqués: 0
 Left: 65.4 mm
 Right: 61.7 mm
 Up: 61.6 mm
 Down: 51.2 mm
 EndX: 0.00 in
 EndY: 0.00 in
 Area 22.23 in²
 Max stitch: 7.6 mm
 Min stitch: 0.0 mm
 Max jump: 7.0 mm
 Total thread: 316.27ft
 Total bobbin: 100.32ft

Stop Sequence:

#	N#	Color	St.	Code	Name	Chart
1.	6		2,000	6	Dark Magenta	Default
2.	5		3,109	1093	Azure Sea	Madeira Classic 40
3.	2		2,751	1046	Eucalyptus	Madeira Classic 40
4.	4		1,136	1178	Carrot	Madeira Classic 40
5.	1		1,938		R235 G42 B36	
6.	3		9,024		R255 G174 B134	
7.	6		835	6	Dark Magenta	Default
8.	10		1,044	1096	Cobalt	Madeira Classic 40
9.	8		111	8	Black	Default

Production Worksheet

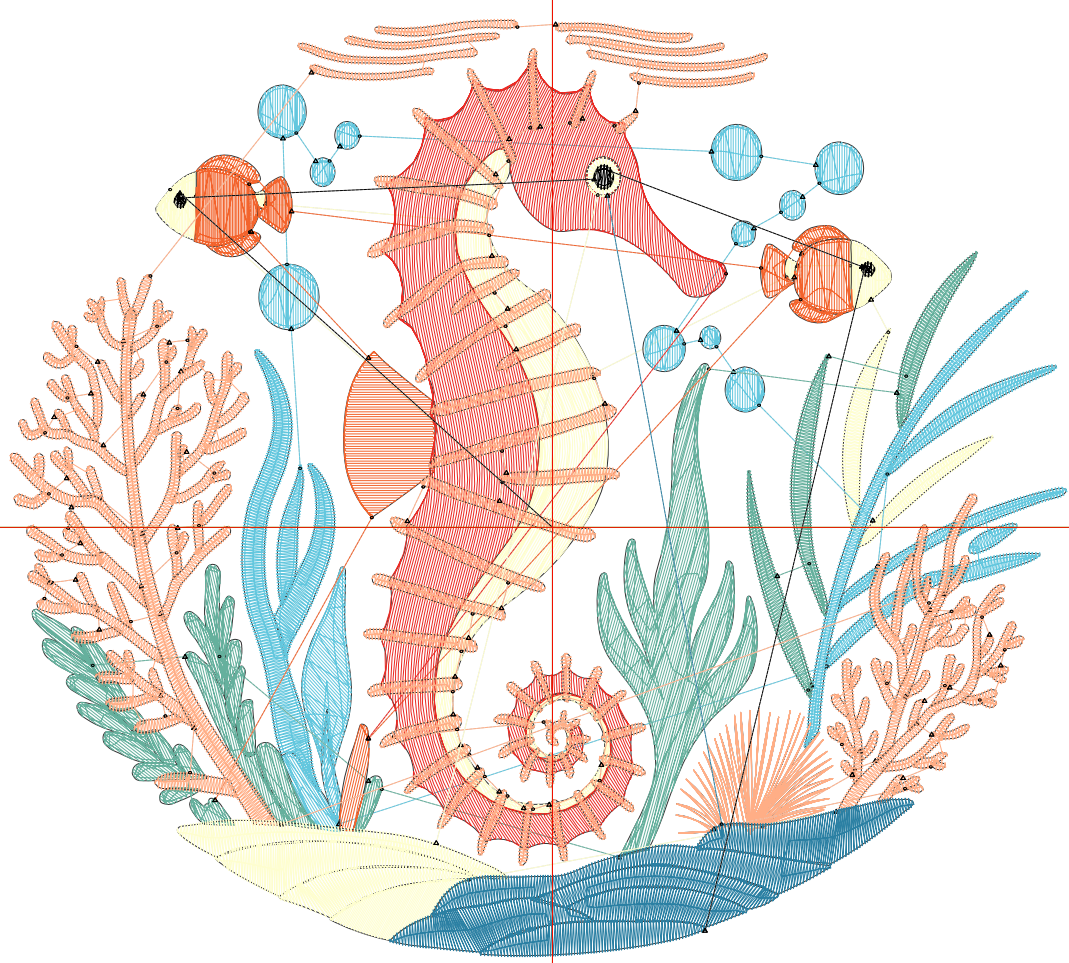
Wilcom EmbroideryStudio - Designing



Design: **5**

Title:

Stitches: 24,303
Height: 4.88 in
Width: 5.51 in
Colors: 8
Colorway: Colorway 1
Zoom: 1:1



Production Worksheet

Wilcom EmbroideryStudio - Designing



Design: **5**

Title:

Stitches: 24,303
 Height: 4.88 in
 Width: 5.51 in
 Colors: 8
 Colorway: Colorway 1
 Zoom: 1:1

Machine format: Tajima
 Color changes: 8
 Stops: 9
 Trims: 100
 Appliqués: 0
 Left: 71.8 mm
 Right: 68.1 mm
 Up: 67.2 mm
 Down: 56.8 mm
 EndX: 0.00 in
 EndY: 0.00 in
 Area 26.89 in²
 Max stitch: 8.4 mm
 Min stitch: 0.0 mm
 Max jump: 6.9 mm
 Total thread: 360.58ft
 Total bobbin: 117.43ft

Stop Sequence:

#	N#	Color	St.	Code	Name	Chart
1.	6		2,197	6	Dark Magenta	Default
2.	5		3,391	1093	Azure Sea	Madeira Classic 40
3.	2		3,058	1046	Eucalyptus	Madeira Classic 40
4.	4		1,277	1178	Carrot	Madeira Classic 40
5.	1		2,277		R235 G42 B36	
6.	3		9,874		R255 G174 B134	
7.	6		940	6	Dark Magenta	Default
8.	10		1,173	1096	Cobalt	Madeira Classic 40
9.	8		114	8	Black	Default

Production Worksheet

Wilcom EmbroideryStudio - Designing



Design: **6**

Title:

Stitches: 26,808
Height: 5.33 in
Width: 6.01 in
Colors: 8
Colorway: Colorway 1
Zoom: 1:1



Production Worksheet

Wilcom EmbroideryStudio - Designing



Design: **6**

Title:

Stitches: 26,808
 Height: 5.33 in
 Width: 6.01 in
 Colors: 8
 Colorway: Colorway 1
 Zoom: 1:1

Machine format: Tajima
 Color changes: 8
 Stops: 9
 Trims: 105
 Appliqués: 0
 Left: 78.1 mm
 Right: 74.4 mm
 Up: 72.9 mm
 Down: 62.4 mm
 EndX: 0.00 in
 EndY: 0.00 in
 Area 31.99 in²
 Max stitch: 9.2 mm
 Min stitch: 0.0 mm
 Max jump: 7.0 mm
 Total thread: 409.19ft
 Total bobbin: 136.49ft

Stop Sequence:

#	N#	Color	St.	Code	Name	Chart
1.	6		2,471	6	Dark Magenta	Default
2.	5		3,710	1093	Azure Sea	Madeira Classic 40
3.	2		3,375	1046	Eucalyptus	Madeira Classic 40
4.	4		1,429	1178	Carrot	Madeira Classic 40
5.	1		2,624		R235 G42 B36	
6.	3		10,694		R255 G174 B134	
7.	6		1,055	6	Dark Magenta	Default
8.	10		1,320	1096	Cobalt	Madeira Classic 40
9.	8		128	8	Black	Default

Production Worksheet

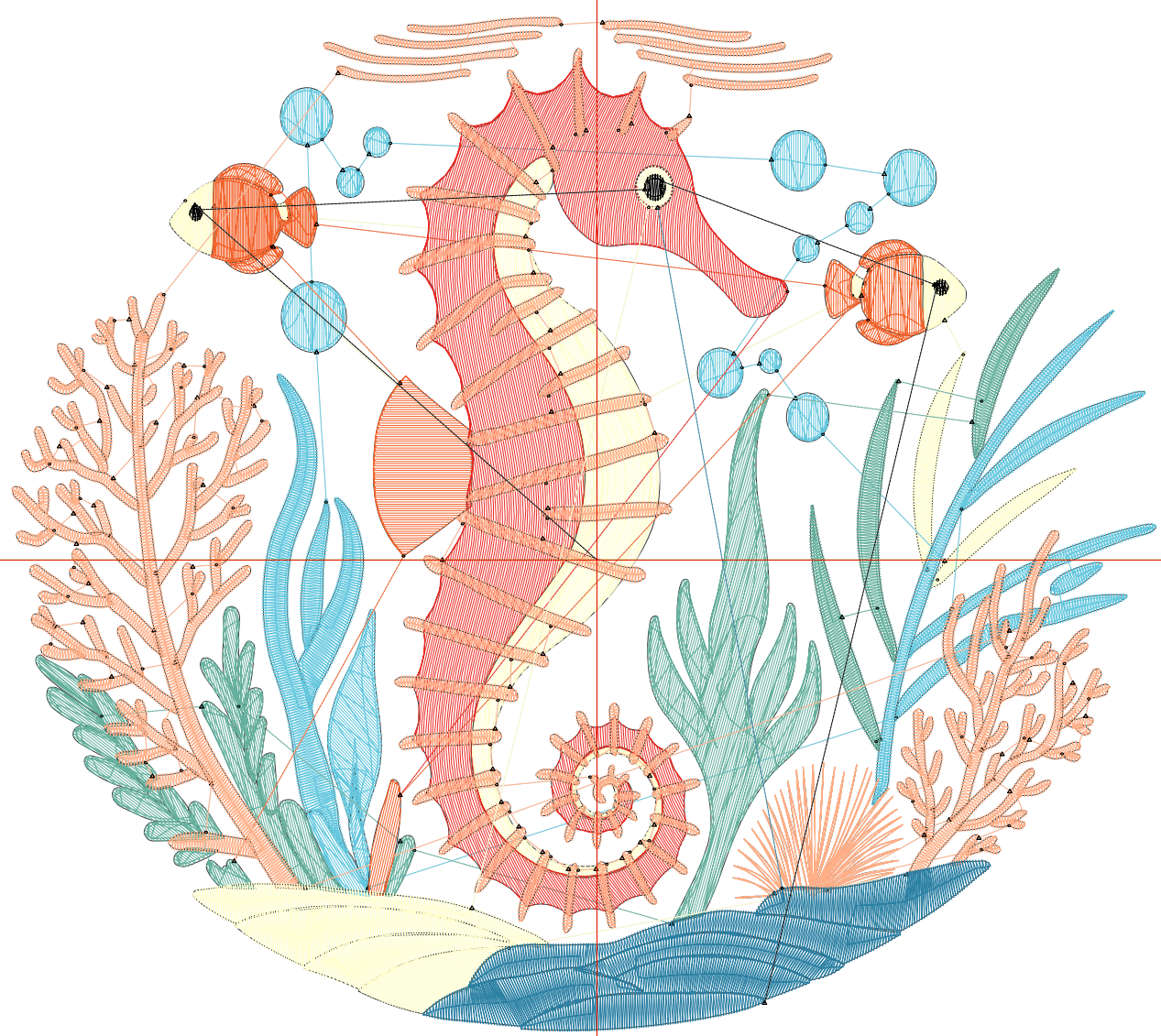
Wilcom EmbroideryStudio - Designing



Design: **6**

Title:

Stitches: 29,522
Height: 5.77 in
Width: 6.51 in
Colors: 8
Colorway: Colorway 1
Zoom: 1:1



Production Worksheet

Wilcom EmbroideryStudio - Designing



Design: **6**

Title:

Stitches: 29,522
 Height: 5.77 in
 Width: 6.51 in
 Colors: 8
 Colorway: Colorway 1
 Zoom: 1:1

Machine format: Tajima
 Color changes: 8
 Stops: 9
 Trims: 111
 Appliqués: 0
 Left: 84.5 mm
 Right: 80.8 mm
 Up: 78.5 mm
 Down: 68.1 mm
 EndX: 0.00 in
 EndY: 0.00 in
 Area 37.54 in²
 Max stitch: 10.0 mm
 Min stitch: 0.0 mm
 Max jump: 6.9 mm
 Total thread: 462.69ft
 Total bobbin: 157.64ft

Stop Sequence:

#	N#	Color	St.	Code	Name	Chart
1.	6		2,781	6	Dark Magenta	Default
2.	5		4,037	1093	Azure Sea	Madeira Classic 40
3.	2		3,767	1046	Eucalyptus	Madeira Classic 40
4.	4		1,587	1178	Carrot	Madeira Classic 40
5.	1		2,985		R235 G42 B36	
6.	3		11,565		R255 G174 B134	
7.	6		1,182	6	Dark Magenta	Default
8.	10		1,479	1096	Cobalt	Madeira Classic 40
9.	8		137	8	Black	Default

Production Worksheet

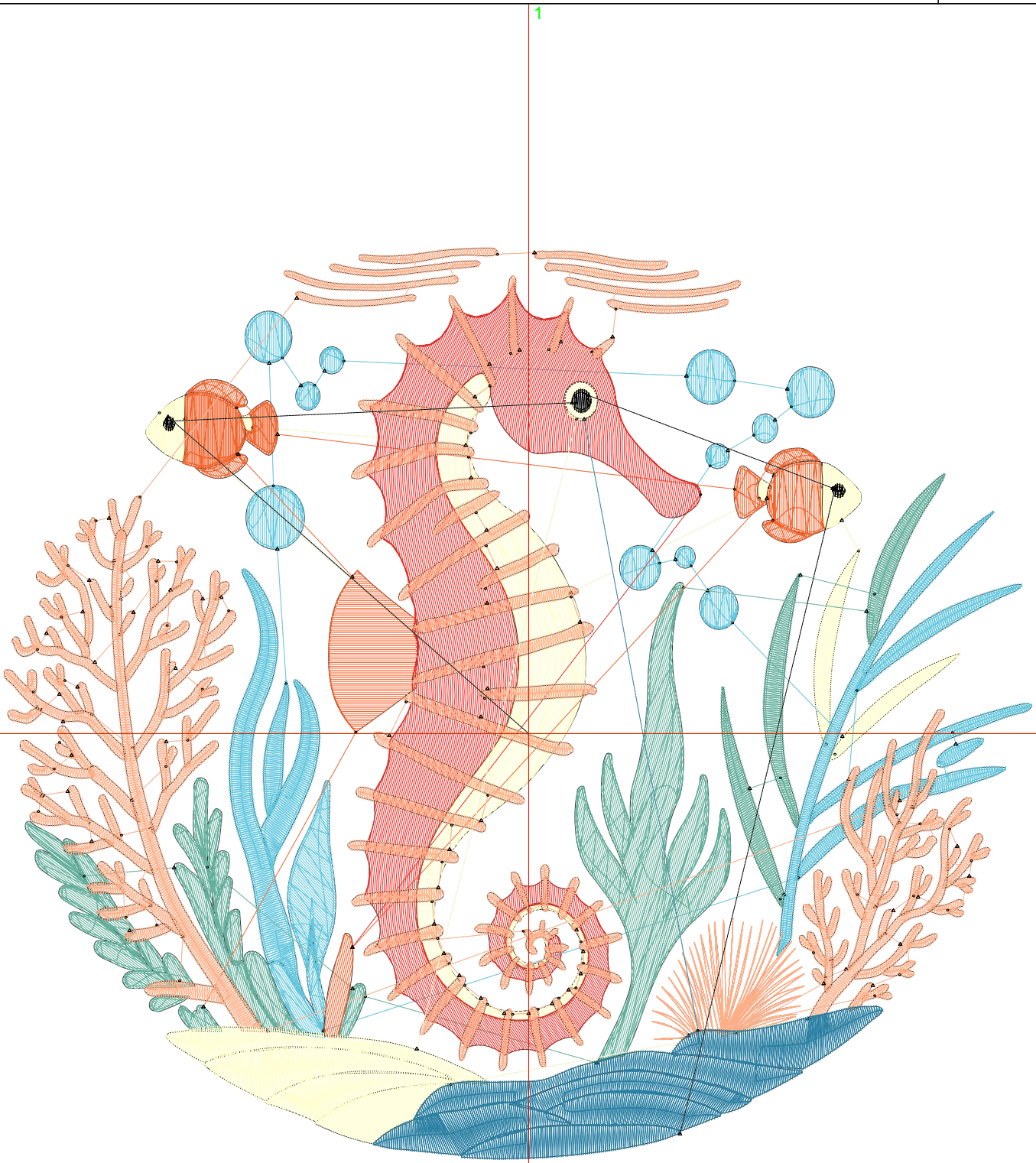
Wilcom EmbroideryStudio - Designing



Design: **7**

Title:

Stitches: 32,155
Height: 6.21 in
Width: 7.01 in
Colors: 8
Colorway: Colorway 1
Zoom: 1:1



Production Worksheet

Wilcom EmbroideryStudio - Designing



Design: **7**

Title:

Stitches: 32,155
 Height: 6.21 in
 Width: 7.01 in
 Colors: 8
 Colorway: Colorway 1
 Zoom: 1:1

Machine format: Tajima
 Color changes: 8
 Stops: 9
 Trims: 116
 Appliqués: 0
 Left: 90.8 mm
 Right: 87.1 mm
 Up: 84.1 mm
 Down: 73.7 mm
 EndX: 0.00 in
 EndY: 0.00 in
 Area 43.52 in²
 Max stitch: 10.8 mm
 Min stitch: 0.0 mm
 Max jump: 7.0 mm
 Total thread: 515.57ft
 Total bobbin: 178.74ft

Stop Sequence:

#	N#	Color	St.	Code	Name	Chart
1.	6		3,037	6	Dark Magenta	Default
2.	5		4,382	1093	Azure Sea	Madeira Classic 40
3.	2		4,072	1046	Eucalyptus	Madeira Classic 40
4.	4		1,740	1178	Carrot	Madeira Classic 40
5.	1		3,366		R235 G42 B36	
6.	3		12,450		R255 G174 B134	
7.	6		1,321	6	Dark Magenta	Default
8.	10		1,644	1096	Cobalt	Madeira Classic 40
9.	8		141	8	Black	Default

Production Worksheet

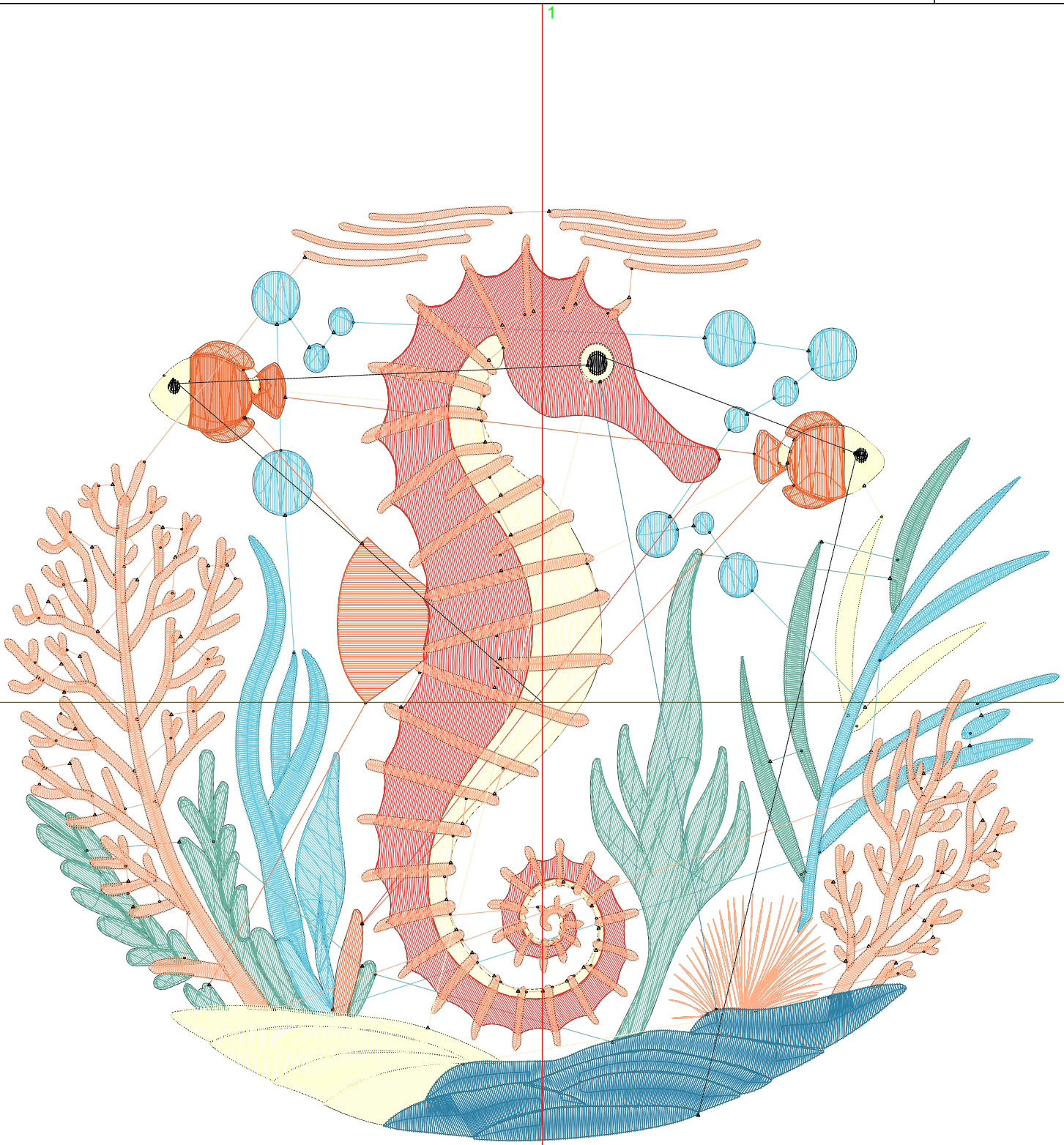
Wilcom EmbroideryStudio - Designing



Design: **7**

Title:

Stitches: 35,038
Height: 6.66 in
Width: 7.51 in
Colors: 8
Colorway: Colorway 1
Zoom: 1:1



Production Worksheet

Wilcom EmbroideryStudio - Designing



Design: **7**

Title:

Stitches: 35,038
 Height: 6.66 in
 Width: 7.51 in
 Colors: 8
 Colorway: Colorway 1
 Zoom: 1:1

Machine format: Tajima
 Color changes: 8
 Stops: 9
 Trims: 121
 Appliqués: 0
 Left: 97.2 mm
 Right: 93.5 mm
 Up: 89.7 mm
 Down: 79.3 mm
 EndX: 0.00 in
 EndY: 0.00 in
 Area 49.96 in²
 Max stitch: 11.5 mm
 Min stitch: 0.0 mm
 Max jump: 7.0 mm
 Total thread: 575.47ft
 Total bobbin: 203.03ft

Stop Sequence:

#	N#	Color	St.	Code	Name	Chart
1.	6		3,376	6	Dark Magenta	Default
2.	5		4,709	1093	Azure Sea	Madeira Classic 40
3.	2		4,500	1046	Eucalyptus	Madeira Classic 40
4.	4		1,893	1178	Carrot	Madeira Classic 40
5.	1		3,825		R235 G42 B36	
6.	3		13,303		R255 G174 B134	
7.	6		1,462	6	Dark Magenta	Default
8.	10		1,821	1096	Cobalt	Madeira Classic 40
9.	8		147	8	Black	Default