

# Production Worksheet

Wilcom EmbroideryStudio - Designing



Design: **3**

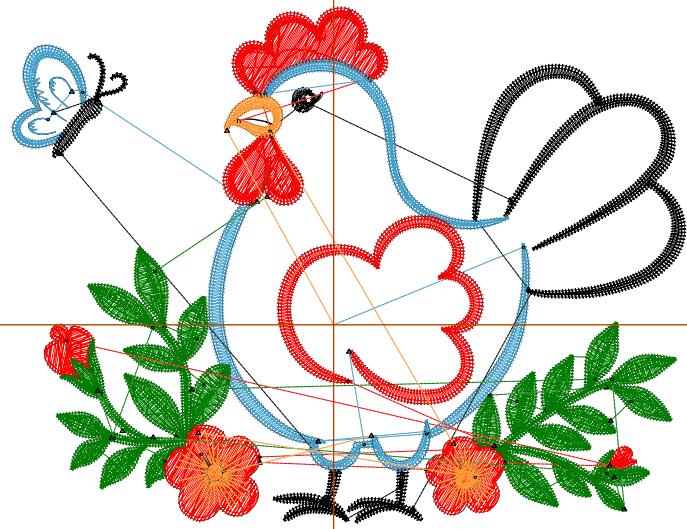
Title:

Stitches: 11,902  
 Height: 2.69 in  
 Width: 3.51 in  
 Colors: 5  
 Colorway: Colorway 1  
 Zoom: 1:1

Machine format: Tajima  
 Color changes: 10  
 Stops: 11  
 Trims: 42  
 Appliqués: 0  
 Left: 42.6 mm  
 Right: 46.6 mm  
 Up: 42.1 mm  
 Down: 26.2 mm  
 EndX: 0.00 in  
 EndY: 0.00 in  
 Area 9.45 in<sup>2</sup>  
 Max stitch: 6.9 mm  
 Min stitch: 0.0 mm  
 Max jump: 6.9 mm  
 Total thread: 147.25ft  
 Total bobbin: 38.84ft

Stop Sequence:

#	N#	Color	St.	Code	Name	Chart
1.	5		727		R64 G160 B204	
2.	8		1,420		R0 G0 B0	
3.	3		702		R255 G0 B0	
4.	5		300		R64 G160 B204	
5.	3		415		R255 G0 B0	
6.	1		5,103		R0 G125 B0	
7.	3		996		R255 G0 B0	
8.	1		830		R0 G125 B0	
9.	3		600		R255 G0 B0	
10.	5		190		R64 G160 B204	
11.	12		617	12	Orange	Default



# Production Worksheet

Wilcom EmbroideryStudio - Designing



Design: **4**

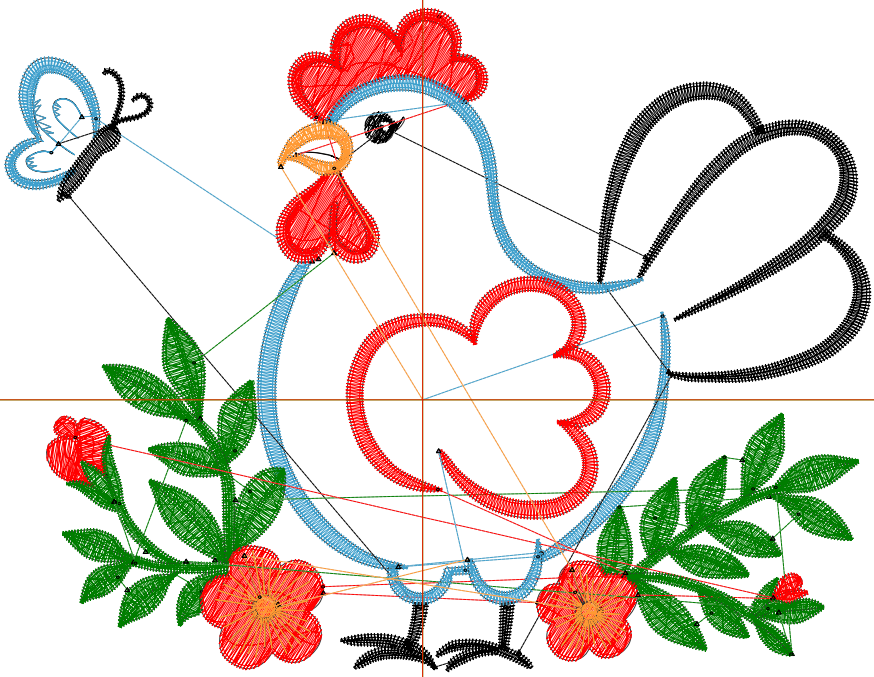
Title:

Stitches: 15,488  
 Height: 3.46 in  
 Width: 4.51 in  
 Colors: 5  
 Colorway: Colorway 1  
 Zoom: 1:1

Machine format: Tajima  
 Color changes: 10  
 Stops: 11  
 Trims: 46  
 Appliqués: 0  
 Left: 55.3 mm  
 Right: 59.3 mm  
 Up: 51.8 mm  
 Down: 36.0 mm  
 EndX: 0.00 in  
 EndY: 0.00 in  
 Area: 15.60 in<sup>2</sup>  
 Max stitch: 7.3 mm  
 Min stitch: 0.1 mm  
 Max jump: 7.0 mm  
 Total thread: 203.06ft  
 Total bobbin: 57.97ft

Stop Sequence:

#	N#	Color	St.	Code	Name	Chart
1.	5		917		R64 G160 B204	
2.	8		1,810		R0 G0 B0	
3.	3		928		R255 G0 B0	
4.	5		384		R64 G160 B204	
5.	3		542		R255 G0 B0	
6.	1		6,697		R0 G125 B0	
7.	3		1,333		R255 G0 B0	
8.	1		1,094		R0 G125 B0	
9.	3		764		R255 G0 B0	
10.	5		235		R64 G160 B204	
11.	12		782	12	Orange	Default



# Production Worksheet

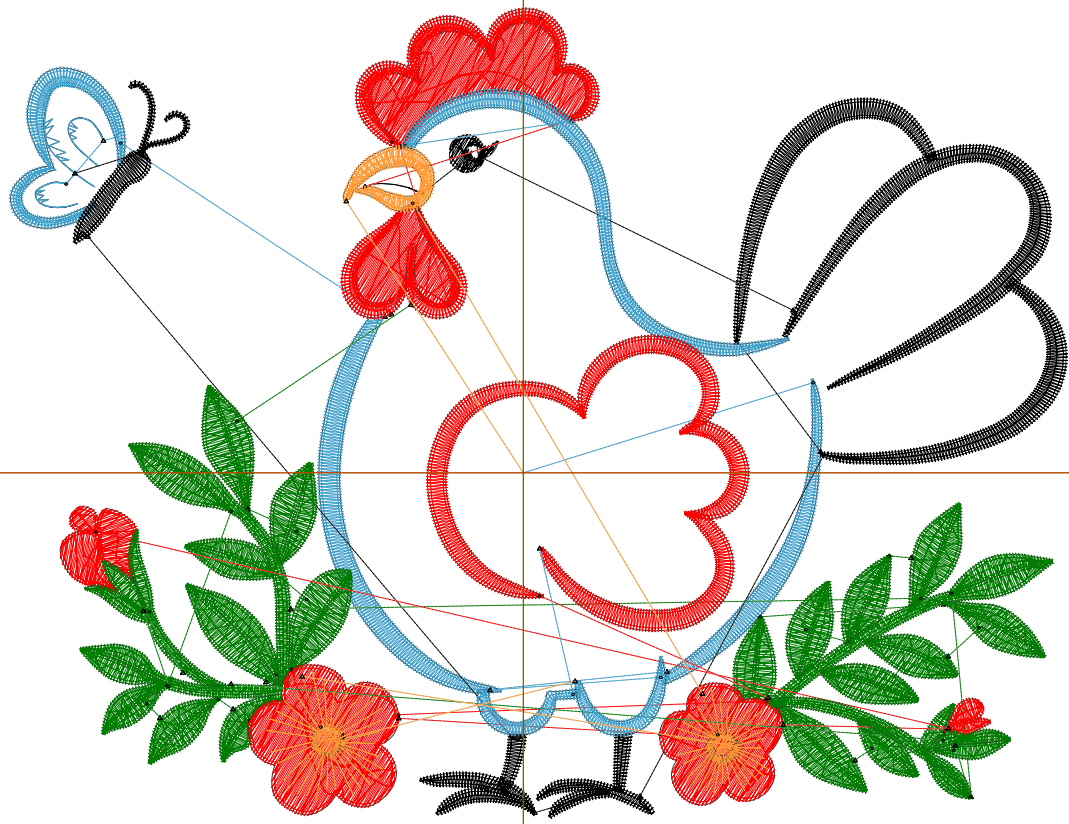
Wilcom EmbroideryStudio - Designing



Design: **5**

Title:

Stitches: 19,071  
Height: 4.22 in  
Width: 5.51 in  
Colors: 5  
Colorway: Colorway 1  
Zoom: 1:1



# Production Worksheet

Wilcom EmbroideryStudio - Designing



Design: **5**

Title:

Stitches: 19,071  
 Height: 4.22 in  
 Width: 5.51 in  
 Colors: 5  
 Colorway: Colorway 1  
 Zoom: 1:1

Machine format: Tajima  
 Color changes: 10  
 Stops: 11  
 Trims: 49  
 Appliqués: 0  
 Left: 68.0 mm  
 Right: 72.0 mm  
 Up: 61.5 mm  
 Down: 45.7 mm  
 EndX: 0.00 in  
 EndY: 0.00 in  
 Area 23.28 in<sup>2</sup>  
 Max stitch: 8.8 mm  
 Min stitch: 0.0 mm  
 Max jump: 7.0 mm  
 Total thread: 265.24ft  
 Total bobbin: 80.88ft

Stop Sequence:

#	N#	Color	St.	Code	Name	Chart
1.	5		1,114		R64 G160 B204	
2.	8		2,195		R0 G0 B0	
3.	3		1,188		R255 G0 B0	
4.	5		474		R64 G160 B204	
5.	3		685		R255 G0 B0	
6.	1		8,179		R0 G125 B0	
7.	3		1,741		R255 G0 B0	
8.	1		1,350		R0 G125 B0	
9.	3		934		R255 G0 B0	
10.	5		282		R64 G160 B204	
11.	12		927	12	Orange	Default

# Production Worksheet

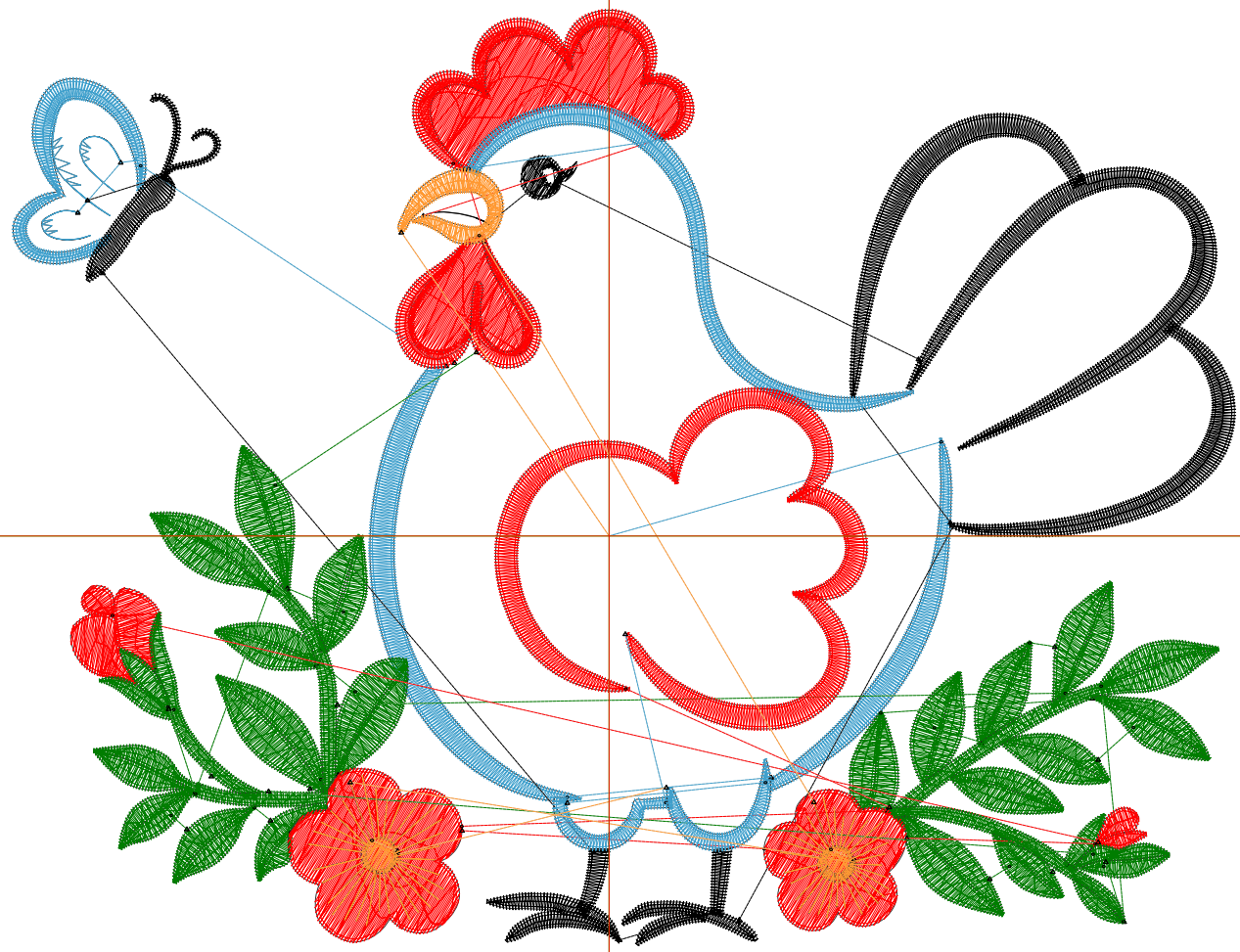
Wilcom EmbroideryStudio - Designing



Design: **6**

Title:

Stitches: 22,821  
Height: 4.99 in  
Width: 6.51 in  
Colors: 5  
Colorway: Colorway 1  
Zoom: 1:1



# Production Worksheet

Wilcom EmbroideryStudio - Designing



Design: **6**

Title:

Stitches: 22,821  
 Height: 4.99 in  
 Width: 6.51 in  
 Colors: 5  
 Colorway: Colorway 1  
 Zoom: 1:1

Machine format: Tajima  
 Color changes: 10  
 Stops: 11  
 Trims: 52  
 Appliqués: 0  
 Left: 80.7 mm  
 Right: 84.7 mm  
 Up: 71.3 mm  
 Down: 55.4 mm  
 EndX: 0.00 in  
 EndY: 0.00 in  
 Area 32.48 in<sup>2</sup>  
 Max stitch: 10.4 mm  
 Min stitch: 0.0 mm  
 Max jump: 7.0 mm  
 Total thread: 335.77ft  
 Total bobbin: 108.10ft

Stop Sequence:

#	N#	Color	St.	Code	Name	Chart
1.	5		1,330		R64 G160 B204	
2.	8		2,599		R0 G0 B0	
3.	3		1,483		R255 G0 B0	
4.	5		565		R64 G160 B204	
5.	3		824		R255 G0 B0	
6.	1		9,667		R0 G125 B0	
7.	3		2,200		R255 G0 B0	
8.	1		1,618		R0 G125 B0	
9.	3		1,117		R255 G0 B0	
10.	5		331		R64 G160 B204	
11.	12		1,085	12	Orange	Default

# Production Worksheet

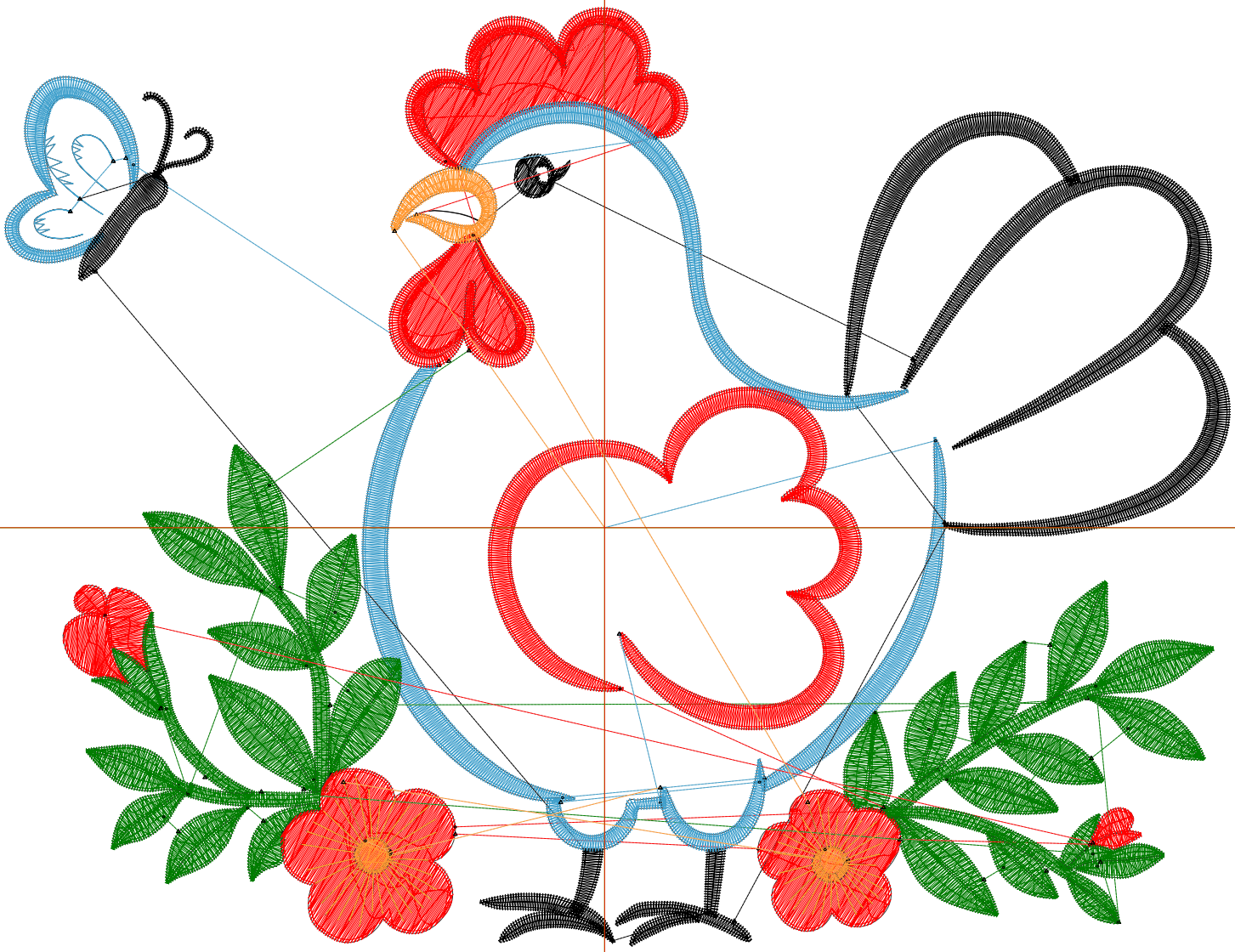
Wilcom EmbroideryStudio - Designing



Design: 7

Title:

Stitches: 26,596  
Height: 5.75 in  
Width: 7.51 in  
Colors: 5  
Colorway: Colorway 1  
Zoom: 1:1



# Production Worksheet

Wilcom EmbroideryStudio - Designing



Design: **7**

Title:

Stitches: 26,596  
 Height: 5.75 in  
 Width: 7.51 in  
 Colors: 5  
 Colorway: Colorway 1  
 Zoom: 1:1

Machine format: Tajima  
 Color changes: 10  
 Stops: 11  
 Trims: 55  
 Appliqués: 0  
 Left: 93.4 mm  
 Right: 97.4 mm  
 Up: 81.0 mm  
 Down: 65.1 mm  
 EndX: 0.00 in  
 EndY: 0.00 in  
 Area 43.23 in<sup>2</sup>  
 Max stitch: 12.0 mm  
 Min stitch: 0.0 mm  
 Max jump: 7.0 mm  
 Total thread: 412.95ft  
 Total bobbin: 139.16ft

Stop Sequence:

#	N#	Color	St.	Code	Name	Chart
1.	5		1,546		R64 G160 B204	
2.	8		3,017		R0 G0 B0	
3.	3		1,777		R255 G0 B0	
4.	5		661		R64 G160 B204	
5.	3		985		R255 G0 B0	
6.	1		11,151		R0 G125 B0	
7.	3		2,699		R255 G0 B0	
8.	1		1,861		R0 G125 B0	
9.	3		1,302		R255 G0 B0	
10.	5		377		R64 G160 B204	
11.	12		1,218	12	Orange	Default