

Production Worksheet

Wilcom EmbroideryStudio - Designing



Design: **3**

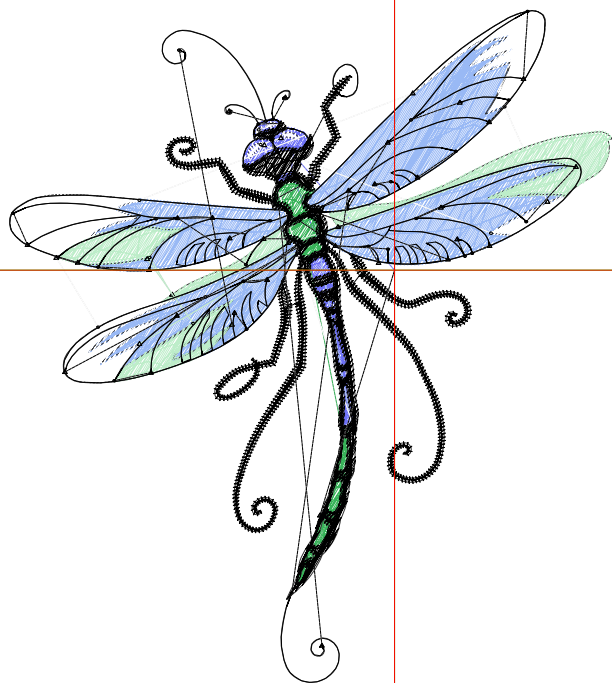
Title:

Stitches: 9,490
Height: 3.50 in
Width: 3.14 in
Colors: 6
Colorway: Colorway 1
Zoom: 1:1

Machine format: Tajima
Color changes: 5
Stops: 6
Trims: 61
Appliqués: 0
Left: 50.9 mm
Right: 28.7 mm
Up: 34.5 mm
Down: 54.5 mm
EndX: 0.00 in
EndY: 0.00 in
Area: 10.99 in²
Max stitch: 11.2 mm
Min stitch: 0.0 mm
Max jump: 6.7 mm
Total thread: 130.49ft
Total bobbin: 39.26ft

Stop Sequence:

| # | N# | Color | St. | Code | Name | Chart |
|----|----|-------|-------|------|----------------|---------|
| 1. | 2 | | 449 | | R109 G113 B245 | |
| 2. | 3 | | 2,412 | | R153 G185 B245 | |
| 3. | 4 | | 460 | | R56 G179 B89 | |
| 4. | 9 | | 1,155 | 9 | White | Default |
| 5. | 5 | | 1,056 | | R189 G237 B201 | |
| 6. | 8 | | 3,956 | 8 | Black | Default |



Production Worksheet

Wilcom EmbroideryStudio - Designing



Design: **4**

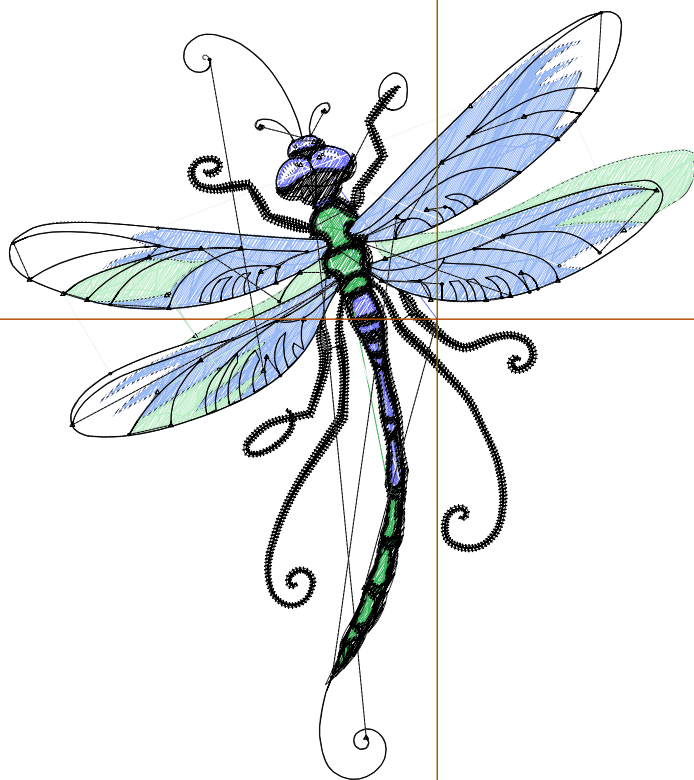
Title:

Stitches: 10,960
Height: 4.00 in
Width: 3.59 in
Colors: 6
Colorway: Colorway 1
Zoom: 1:1

Machine format: Tajima
Color changes: 5
Stops: 6
Trims: 65
Appliqués: 0
Left: 56.6 mm
Right: 34.5 mm
Up: 40.8 mm
Down: 60.8 mm
EndX: 0.00 in
EndY: 0.00 in
Area: 14.37 in²
Max stitch: 7.0 mm
Min stitch: 0.0 mm
Max jump: 7.0 mm
Total thread: 155.55ft
Total bobbin: 48.39ft

Stop Sequence:

| # | N# | Color | St. | Code | Name | Chart |
|----|----|-------|-------|------|----------------|---------|
| 1. | 2 | | 507 | | R109 G113 B245 | |
| 2. | 3 | | 2,893 | | R153 G185 B245 | |
| 3. | 4 | | 532 | | R56 G179 B89 | |
| 4. | 9 | | 1,366 | 9 | White | Default |
| 5. | 5 | | 1,240 | | R189 G237 B201 | |
| 6. | 8 | | 4,420 | 8 | Black | Default |



Production Worksheet

Wilcom EmbroideryStudio - Designing



Design: **4**

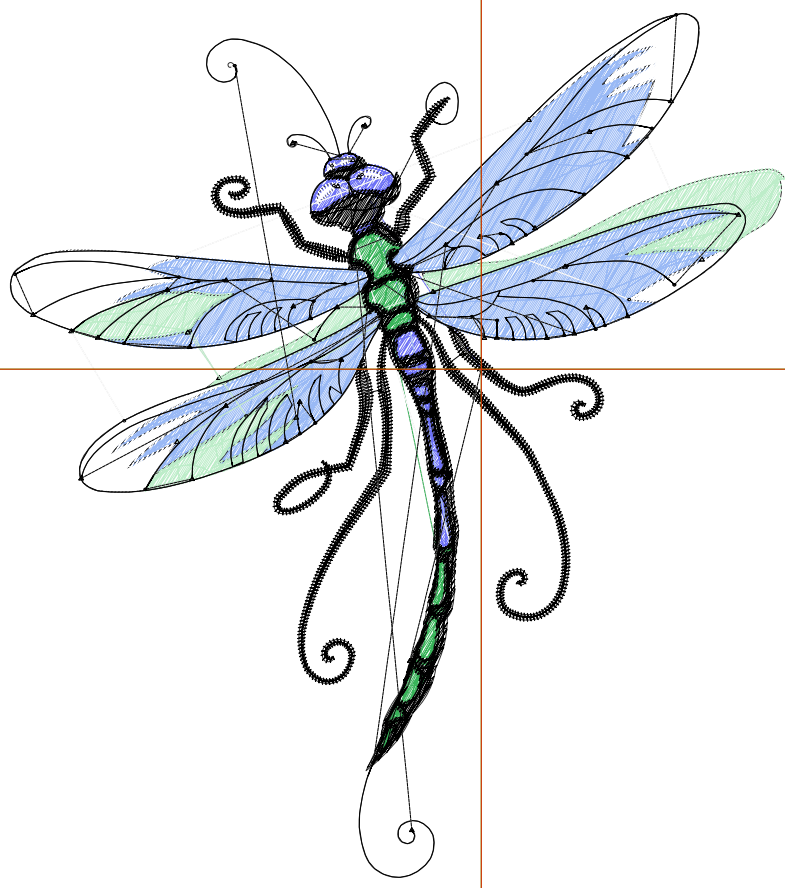
Title:

Stitches: 12,409
Height: 4.50 in
Width: 4.04 in
Colors: 6
Colorway: Colorway 1
Zoom: 1:1

Machine format: Tajima
Color changes: 5
Stops: 6
Trims: 68
Appliqués: 0
Left: 62.3 mm
Right: 40.2 mm
Up: 47.2 mm
Down: 67.2 mm
EndX: 0.00 in
EndY: 0.00 in
Area 18.18 in²
Max stitch: 6.8 mm
Min stitch: 0.0 mm
Max jump: 6.8 mm
Total thread: 181.95ft
Total bobbin: 58.41ft

Stop Sequence:

| # | N# | Color | St. | Code | Name | Chart |
|----|----|-------|-------|------|----------------|---------|
| 1. | 2 | | 579 | | R109 G113 B245 | |
| 2. | 3 | | 3,394 | | R153 G185 B245 | |
| 3. | 4 | | 584 | | R56 G179 B89 | |
| 4. | 9 | | 1,557 | 9 | White | Default |
| 5. | 5 | | 1,429 | | R189 G237 B201 | |
| 6. | 8 | | 4,864 | 8 | Black | Default |



Production Worksheet

Wilcom EmbroideryStudio - Designing



Design: **5**

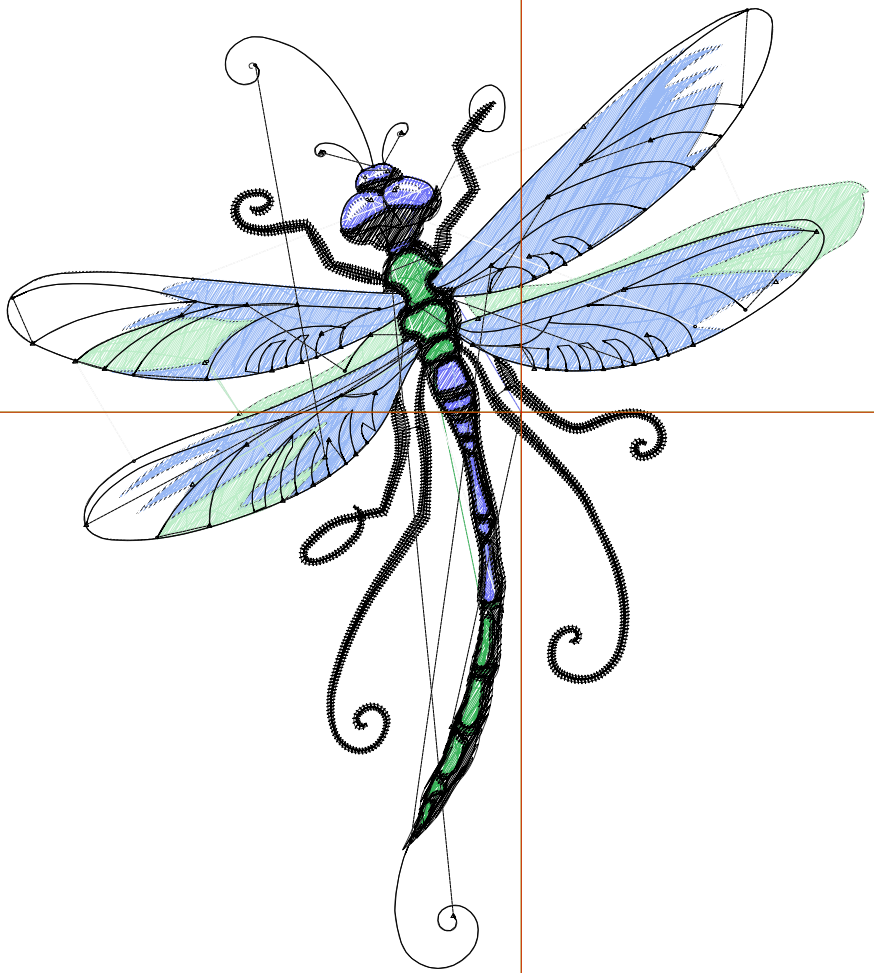
Title:

Stitches: 14,080
 Height: 5.00 in
 Width: 4.48 in
 Colors: 6
 Colorway: Colorway 1
 Zoom: 1:1

Machine format: Tajima
 Color changes: 5
 Stops: 6
 Trims: 76
 Appliqués: 0
 Left: 68.0 mm
 Right: 45.9 mm
 Up: 53.5 mm
 Down: 73.6 mm
 EndX: 0.00 in
 EndY: 0.00 in
 Area: 22.44 in²
 Max stitch: 7.0 mm
 Min stitch: 0.0 mm
 Max jump: 7.0 mm
 Total thread: 211.70ft
 Total bobbin: 69.54ft

Stop Sequence:

| # | N# | Color | St. | Code | Name | Chart |
|----|----|-------|-------|------|----------------|---------|
| 1. | 2 | | 652 | | R109 G113 B245 | |
| 2. | 3 | | 3,972 | | R153 G185 B245 | |
| 3. | 4 | | 656 | | R56 G179 B89 | |
| 4. | 9 | | 1,771 | 9 | White | Default |
| 5. | 5 | | 1,626 | | R189 G237 B201 | |
| 6. | 8 | | 5,401 | 8 | Black | Default |



Production Worksheet

Wilcom EmbroideryStudio - Designing



Design: **5**

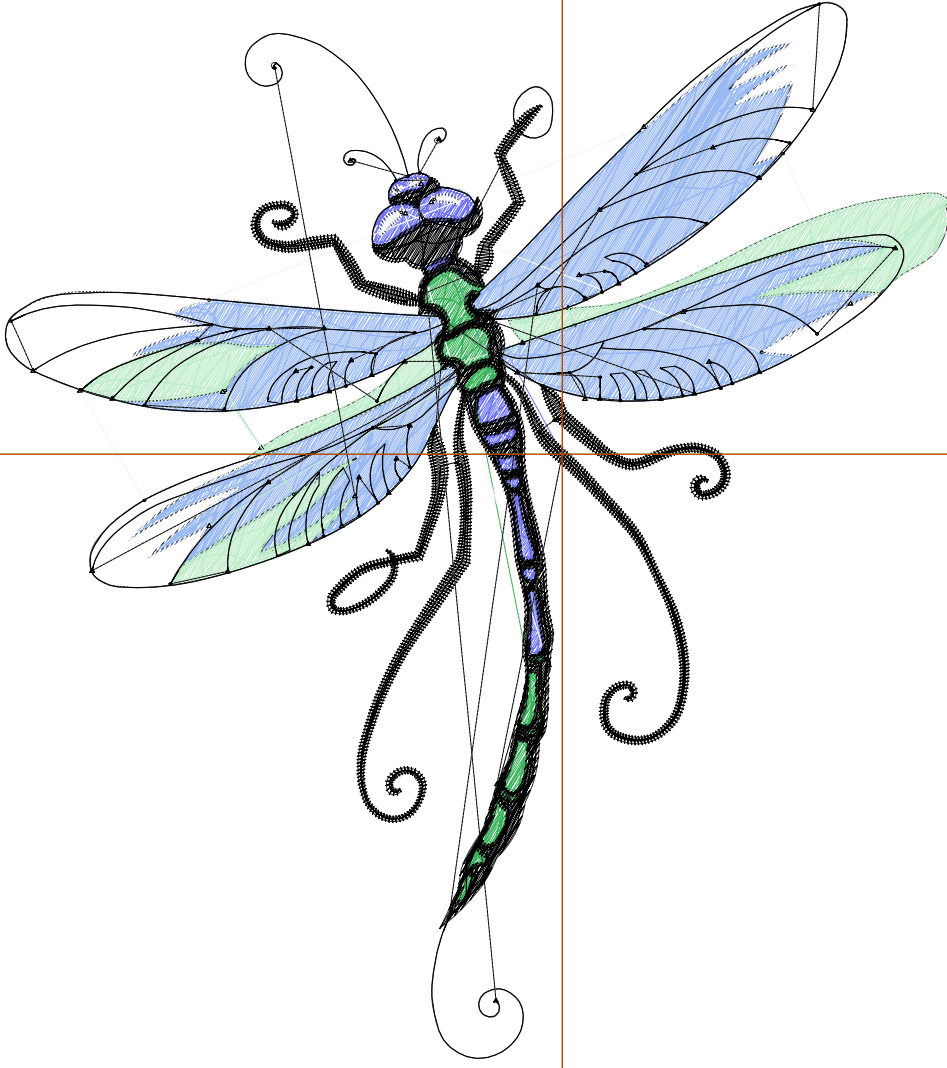
Title:

Stitches: 15,709
Height: 5.50 in
Width: 4.93 in
Colors: 6
Colorway: Colorway 1
Zoom: 1:1

Machine format: Tajima
Color changes: 5
Stops: 6
Trims: 78
Appliqués: 0
Left: 73.7 mm
Right: 51.6 mm
Up: 59.9 mm
Down: 79.9 mm
EndX: 0.00 in
EndY: 0.00 in
Area: 27.14 in²
Max stitch: 7.0 mm
Min stitch: 0.0 mm
Max jump: 7.0 mm
Total thread: 243.02ft
Total bobbin: 81.77ft

Stop Sequence:

| # | N# | Color | St. | Code | Name | Chart |
|----|----|-------|-------|------|----------------|---------|
| 1. | 2 | | 711 | | R109 G113 B245 | |
| 2. | 3 | | 4,574 | | R153 G185 B245 | |
| 3. | 4 | | 714 | | R56 G179 B89 | |
| 4. | 9 | | 1,984 | 9 | White | Default |
| 5. | 5 | | 1,829 | | R189 G237 B201 | |
| 6. | 8 | | 5,895 | 8 | Black | Default |



Production Worksheet

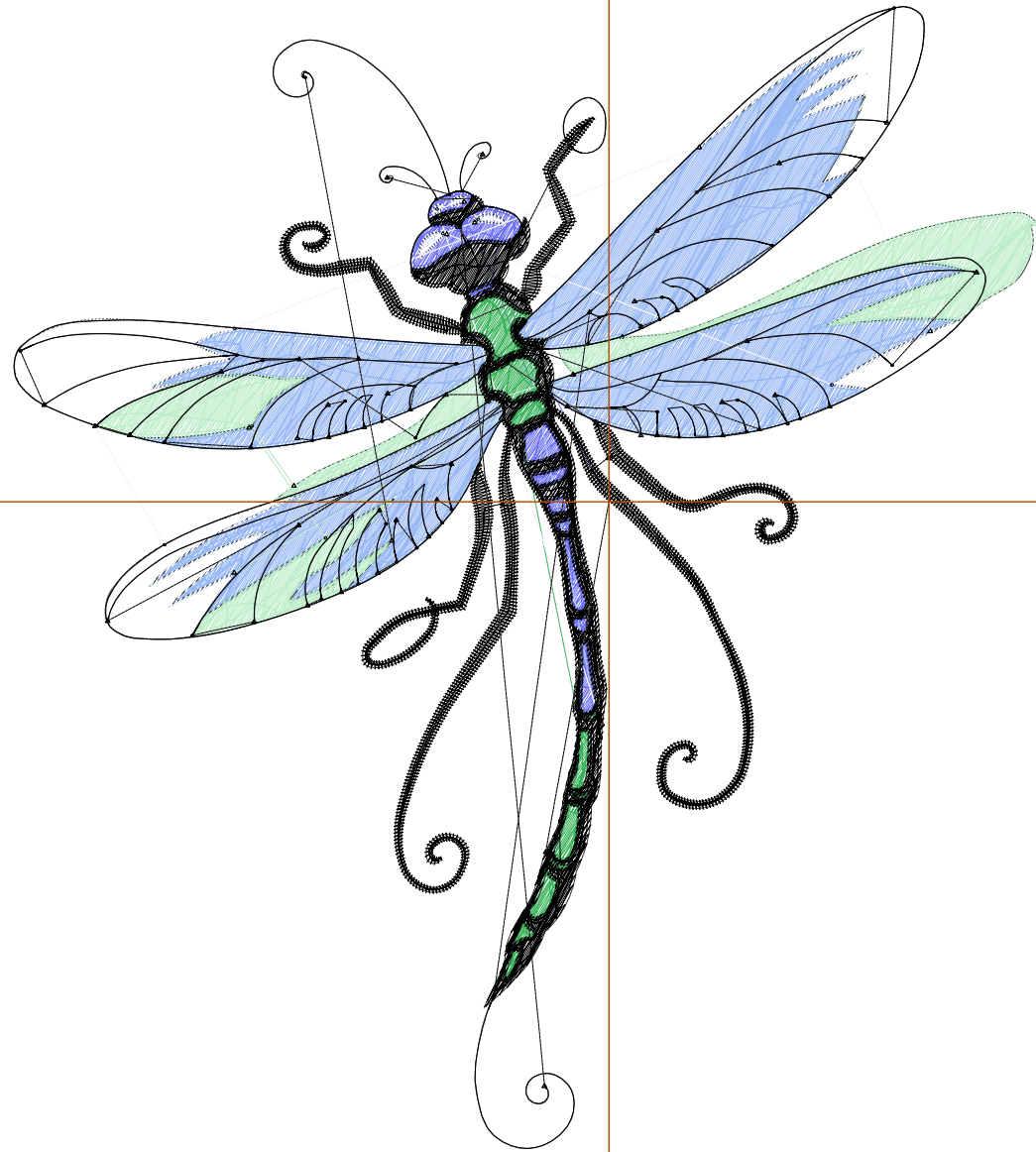
Wilcom EmbroideryStudio - Designing



Design: **6**

Title:

Stitches: 17,556
Height: 6.00 in
Width: 5.38 in
Colors: 6
Colorway: Colorway 1
Zoom: 1:1



Production Worksheet

Wilcom EmbroideryStudio - Designing



Design: **6**

Title:

Stitches: 17,556
 Height: 6.00 in
 Width: 5.38 in
 Colors: 6
 Colorway: Colorway 1
 Zoom: 1:1

Machine format: Tajima
 Color changes: 5
 Stops: 6
 Trims: 83
 Appliqués: 0
 Left: 79.4 mm
 Right: 57.3 mm
 Up: 66.2 mm
 Down: 86.3 mm
 EndX: 0.00 in
 EndY: 0.00 in
 Area 32.29 in²
 Max stitch: 6.9 mm
 Min stitch: 0.0 mm
 Max jump: 6.9 mm
 Total thread: 276.87ft
 Total bobbin: 94.64ft

Stop Sequence:

| # | N# | Color | St. | Code | Name | Chart |
|----|----|-------|-------|------|----------------|---------|
| 1. | 2 | | 799 | | R109 G113 B245 | |
| 2. | 3 | | 5,210 | | R153 G185 B245 | |
| 3. | 4 | | 793 | | R56 G179 B89 | |
| 4. | 9 | | 2,209 | 9 | White | Default |
| 5. | 5 | | 2,048 | | R189 G237 B201 | |
| 6. | 8 | | 6,495 | 8 | Black | Default |

Production Worksheet

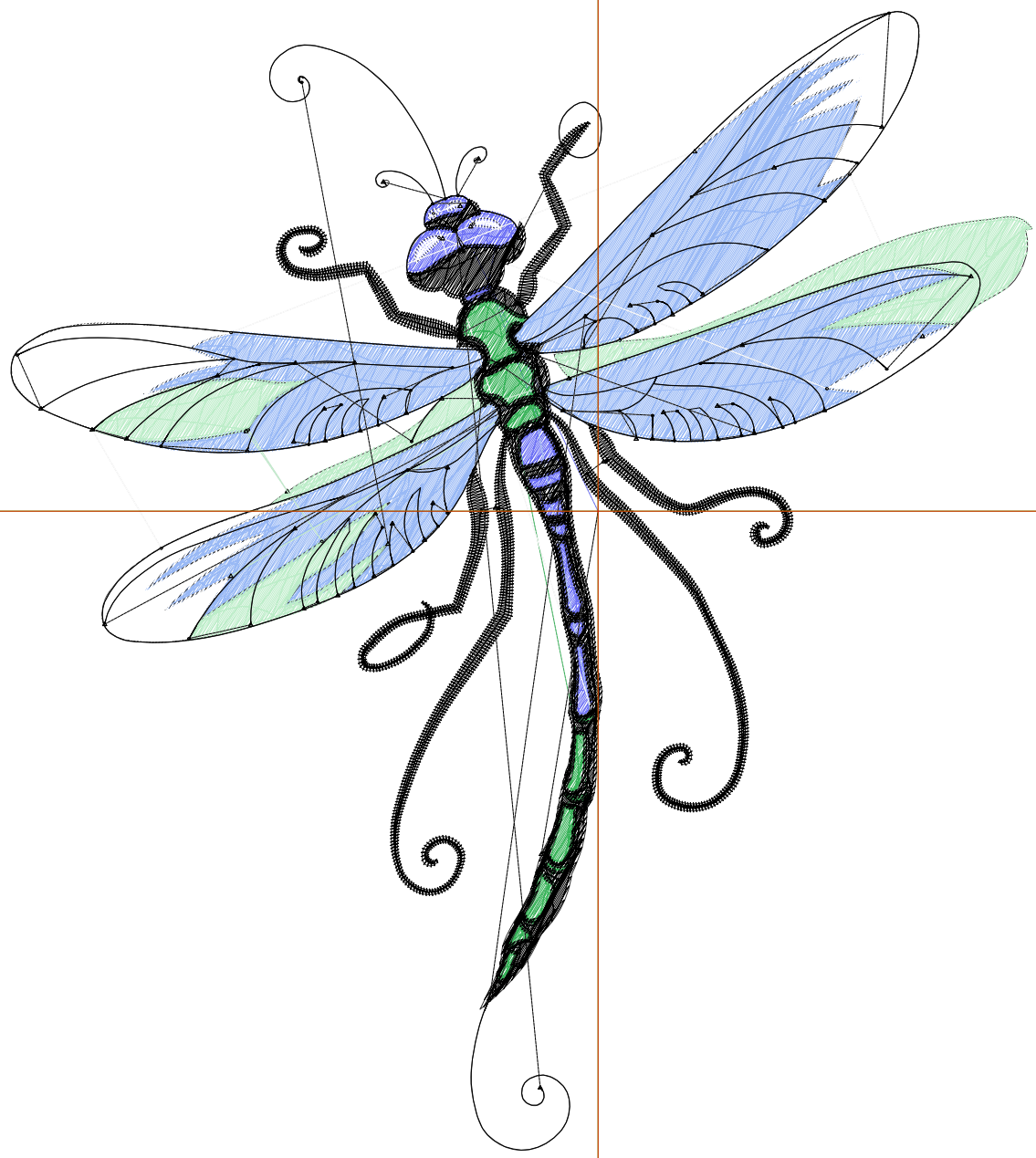
Wilcom EmbroideryStudio - Designing



Design: **6**

Title:

Stitches: 19,323
Height: 6.50 in
Width: 5.83 in
Colors: 6
Colorway: Colorway 1
Zoom: 1:1



Production Worksheet

Wilcom EmbroideryStudio - Designing



Design: **6**

Title:

Stitches: 19,323
 Height: 6.50 in
 Width: 5.83 in
 Colors: 6
 Colorway: Colorway 1
 Zoom: 1:1

Machine format: Tajima
 Color changes: 5
 Stops: 6
 Trims: 86
 Appliqués: 0
 Left: 85.1 mm
 Right: 62.9 mm
 Up: 72.6 mm
 Down: 92.6 mm
 EndX: 0.00 in
 EndY: 0.00 in
 Area 37.90 in²
 Max stitch: 7.0 mm
 Min stitch: 0.0 mm
 Max jump: 7.0 mm
 Total thread: 312.23ft
 Total bobbin: 108.72ft

Stop Sequence:

| # | N# | Color | St. | Code | Name | Chart |
|----|----|-------|-------|------|----------------|---------|
| 1. | 2 | | 861 | | R109 G113 B245 | |
| 2. | 3 | | 5,919 | | R153 G185 B245 | |
| 3. | 4 | | 865 | | R56 G179 B89 | |
| 4. | 9 | | 2,493 | 9 | White | Default |
| 5. | 5 | | 2,280 | | R189 G237 B201 | |
| 6. | 8 | | 6,903 | 8 | Black | Default |

Production Worksheet

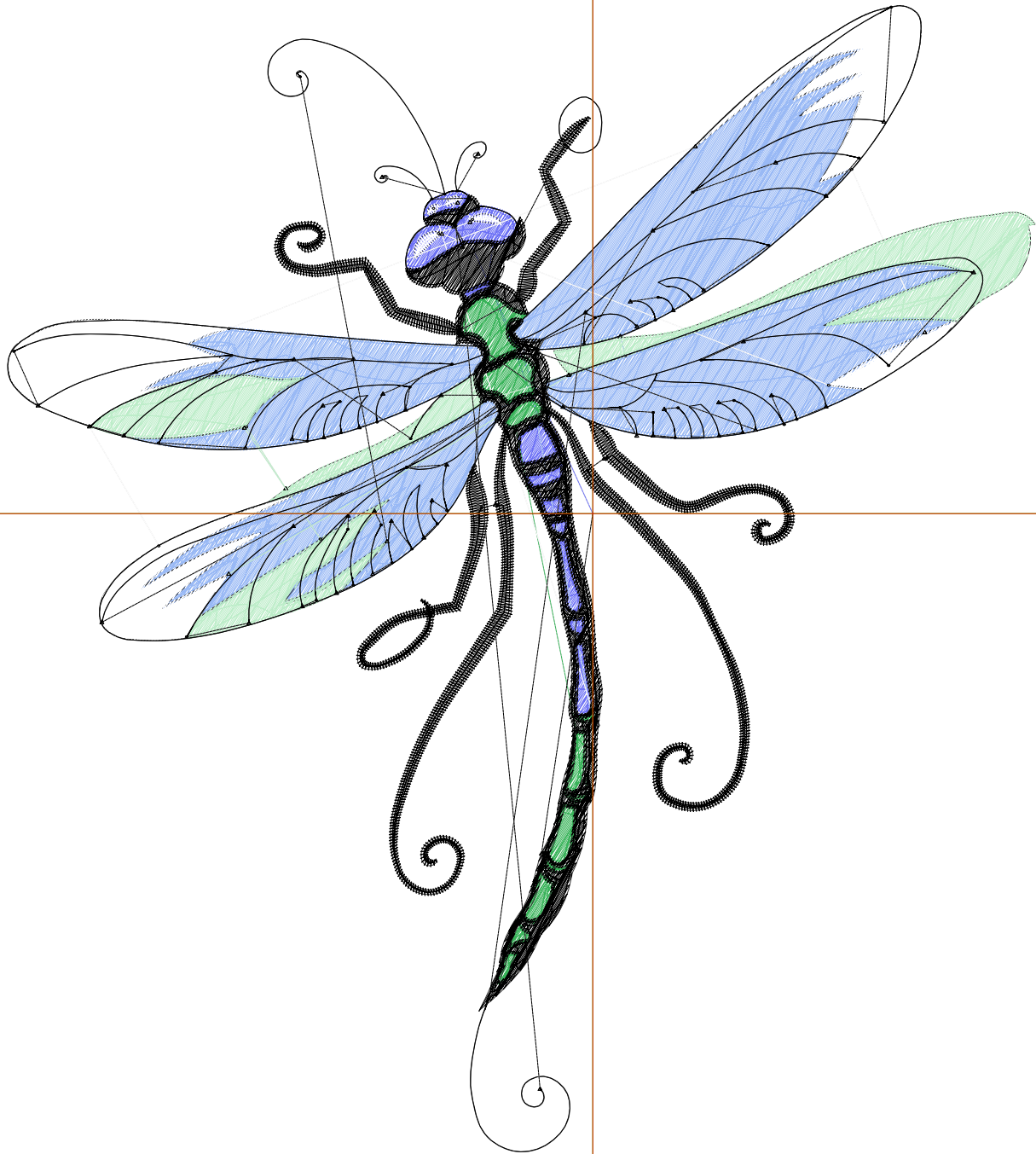
Wilcom EmbroideryStudio - Designing



Design: **7**

Title:

Stitches: 21,178
Height: 7.00 in
Width: 6.28 in
Colors: 6
Colorway: Colorway 1
Zoom: 1:1



Production Worksheet

Wilcom EmbroideryStudio - Designing



Design: **7**

Title:

Stitches: 21,178
 Height: 7.00 in
 Width: 6.28 in
 Colors: 6
 Colorway: Colorway 1
 Zoom: 1:1

Machine format: Tajima
 Color changes: 5
 Stops: 6
 Trims: 88
 Appliqués: 0
 Left: 90.8 mm
 Right: 68.6 mm
 Up: 78.9 mm
 Down: 99.0 mm
 EndX: 0.00 in
 EndY: 0.00 in
 Area 43.95 in²
 Max stitch: 6.7 mm
 Min stitch: 0.0 mm
 Max jump: 6.8 mm
 Total thread: 349.31ft
 Total bobbin: 123.49ft

Stop Sequence:

| # | N# | Color | St. | Code | Name | Chart |
|----|----|-------|-------|------|----------------|---------|
| 1. | 2 | | 942 | | R109 G113 B245 | |
| 2. | 3 | | 6,584 | | R153 G185 B245 | |
| 3. | 4 | | 954 | | R56 G179 B89 | |
| 4. | 9 | | 2,753 | 9 | White | Default |
| 5. | 5 | | 2,527 | | R189 G237 B201 | |
| 6. | 8 | | 7,416 | 8 | Black | Default |

Production Worksheet

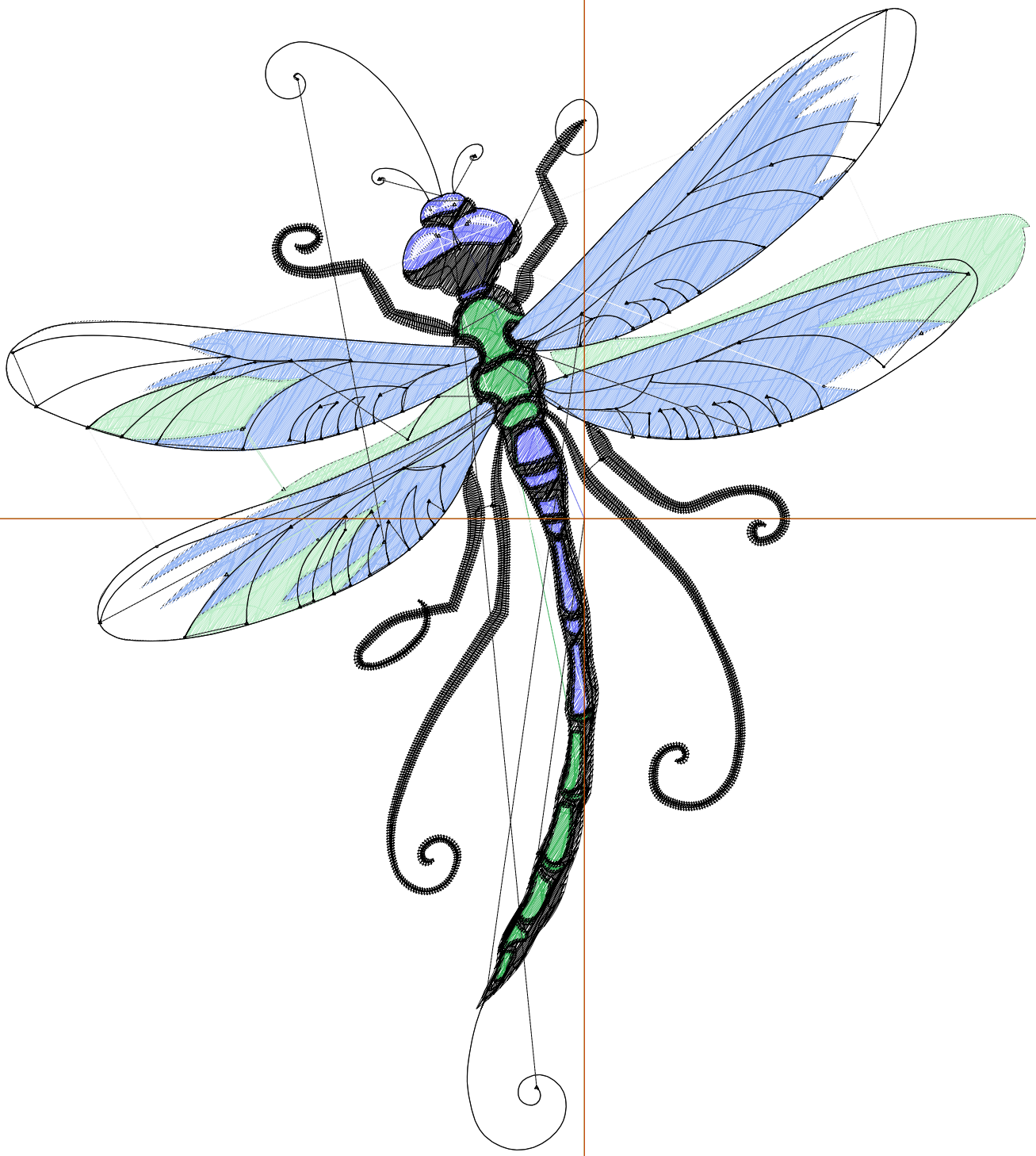
Wilcom EmbroideryStudio - Designing



Design: **7**

Title:

Stitches: 23,104
Height: 7.50 in
Width: 6.72 in
Colors: 6
Colorway: Colorway 1
Zoom: 1:1



Production Worksheet

Wilcom EmbroideryStudio - Designing



Design: **7**

Title:

Stitches: 23,104
 Height: 7.50 in
 Width: 6.72 in
 Colors: 6
 Colorway: Colorway 1
 Zoom: 1:1

Machine format: Tajima
 Color changes: 5
 Stops: 6
 Trims: 90
 Appliqués: 0
 Left: 96.5 mm
 Right: 74.3 mm
 Up: 85.3 mm
 Down: 105.3 mm
 EndX: 0.00 in
 EndY: 0.00 in
 Area 50.44 in²
 Max stitch: 7.0 mm
 Min stitch: 0.0 mm
 Max jump: 7.0 mm
 Total thread: 388.39ft
 Total bobbin: 139.15ft

Stop Sequence:

| # | N# | Color | St. | Code | Name | Chart |
|----|----|-------|-------|------|----------------|---------|
| 1. | 2 | | 1,029 | | R109 G113 B245 | |
| 2. | 3 | | 7,334 | | R153 G185 B245 | |
| 3. | 4 | | 1,021 | | R56 G179 B89 | |
| 4. | 9 | | 3,030 | 9 | White | Default |
| 5. | 5 | | 2,780 | | R189 G237 B201 | |
| 6. | 8 | | 7,908 | 8 | Black | Default |