

Production Worksheet

Wilcom EmbroideryStudio - Designing



Design: **3**

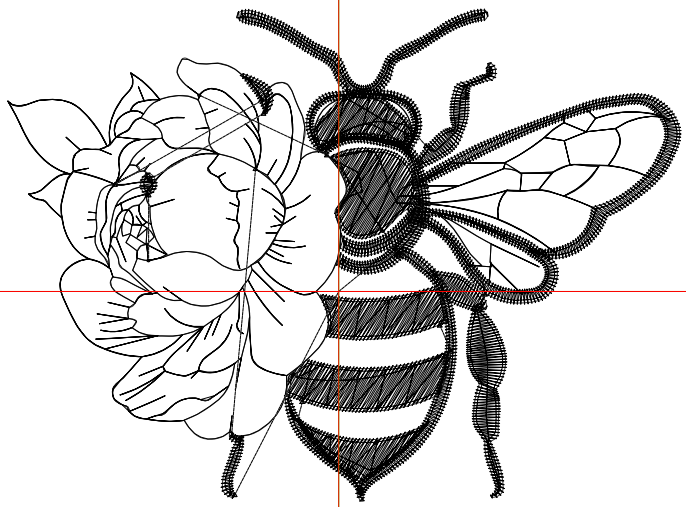
Title:

Stitches: 5,063
 Height: 2.56 in
 Width: 3.51 in
 Colors: 1
 Colorway: Colorway 1
 Zoom: 1:1

Machine format: Tajima
 Color changes: 0
 Stops: 1
 Trims: 12
 Appliqués: 0
 Left: 43.8 mm
 Right: 45.3 mm
 Up: 37.4 mm
 Down: 27.7 mm
 EndX: 0.00 in
 EndY: 0.00 in
 Area: 8.99 in²
 Max stitch: 6.4 mm
 Min stitch: 0.0 mm
 Max jump: 6.7 mm
 Total thread: 72.71ft
 Total bobbin: 23.21ft

Stop Sequence:

#	N#	Color	St.	Code	Name	Chart
1.	8	█	5,061	8	Black	Default



Production Worksheet

Wilcom EmbroideryStudio - Designing



Design: **4**

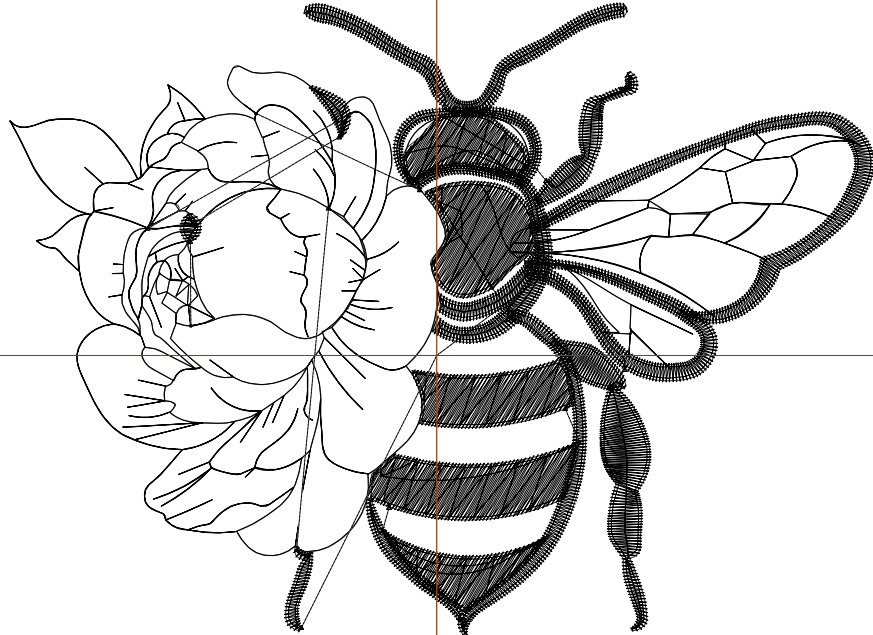
Title:

Stitches: 6,502
 Height: 3.29 in
 Width: 4.51 in
 Colors: 1
 Colorway: Colorway 1
 Zoom: 1:1

Machine format: Tajima
 Color changes: 0
 Stops: 1
 Trims: 12
 Appliqués: 0
 Left: 56.5 mm
 Right: 58.0 mm
 Up: 46.7 mm
 Down: 37.0 mm
 EndX: 0.00 in
 EndY: 0.00 in
 Area: 14.84 in²
 Max stitch: 6.6 mm
 Min stitch: 0.0 mm
 Max jump: 6.5 mm
 Total thread: 101.66ft
 Total bobbin: 34.77ft

Stop Sequence:

#	N#	Color	St.	Code	Name	Chart
1.	8	█	6,500	8	Black	Default



Production Worksheet

Wilcom EmbroideryStudio - Designing



Design: **5**

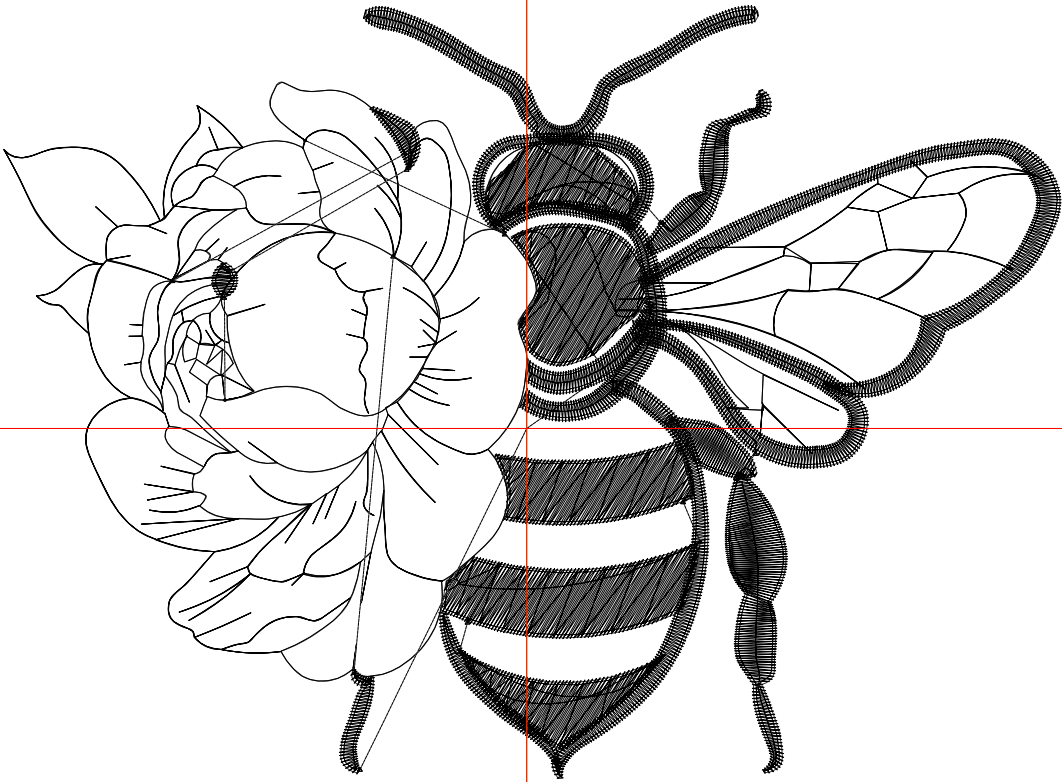
Title:

Stitches: 8,061
 Height: 4.02 in
 Width: 5.51 in
 Colors: 1
 Colorway: Colorway 1
 Zoom: 1:1

Machine format: Tajima
 Color changes: 0
 Stops: 1
 Trims: 12
 Appliqués: 0
 Left: 69.2 mm
 Right: 70.7 mm
 Up: 55.9 mm
 Down: 46.3 mm
 EndX: 0.00 in
 EndY: 0.00 in
 Area: 22.16 in²
 Max stitch: 8.0 mm
 Min stitch: 0.0 mm
 Max jump: 6.9 mm
 Total thread: 135.72ft
 Total bobbin: 48.89ft

Stop Sequence:

#	N#	Color	St.	Code	Name	Chart
1.	8	█	8,059	8	Black	Default



Production Worksheet

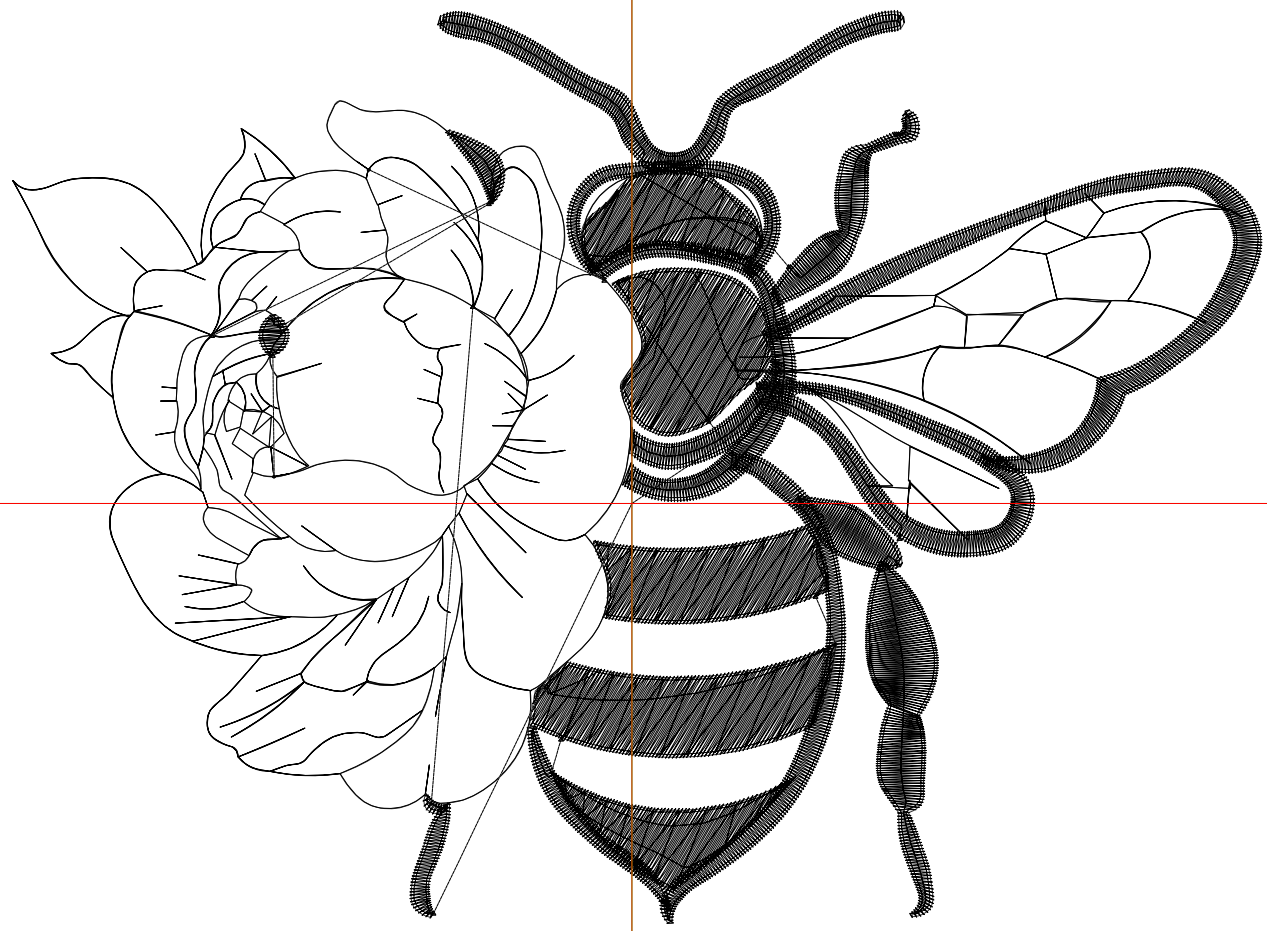
Wilcom EmbroideryStudio - Designing



Design: **6**

Title:

Stitches: 9,755
Height: 4.76 in
Width: 6.51 in
Colors: 1
Colorway: Colorway 1
Zoom: 1:1



Production Worksheet

Wilcom EmbroideryStudio - Designing



Design: **6**

Title:

Stitches: 9,755
 Height: 4.76 in
 Width: 6.51 in
 Colors: 1
 Colorway: Colorway 1
 Zoom: 1:1

Machine format: Tajima
 Color changes: 0
 Stops: 1
 Trims: 12
 Appliqués: 0
 Left: 81.9 mm
 Right: 83.4 mm
 Up: 65.2 mm
 Down: 55.6 mm
 EndX: 0.00 in
 EndY: 0.00 in
 Area 30.94 in²
 Max stitch: 9.4 mm
 Min stitch: 0.0 mm
 Max jump: 6.9 mm
 Total thread: 175.05ft
 Total bobbin: 65.61ft

Stop Sequence:

#	N#	Color	St.	Code	Name	Chart
1.	8	█	9,753	8	Black	Default

Production Worksheet

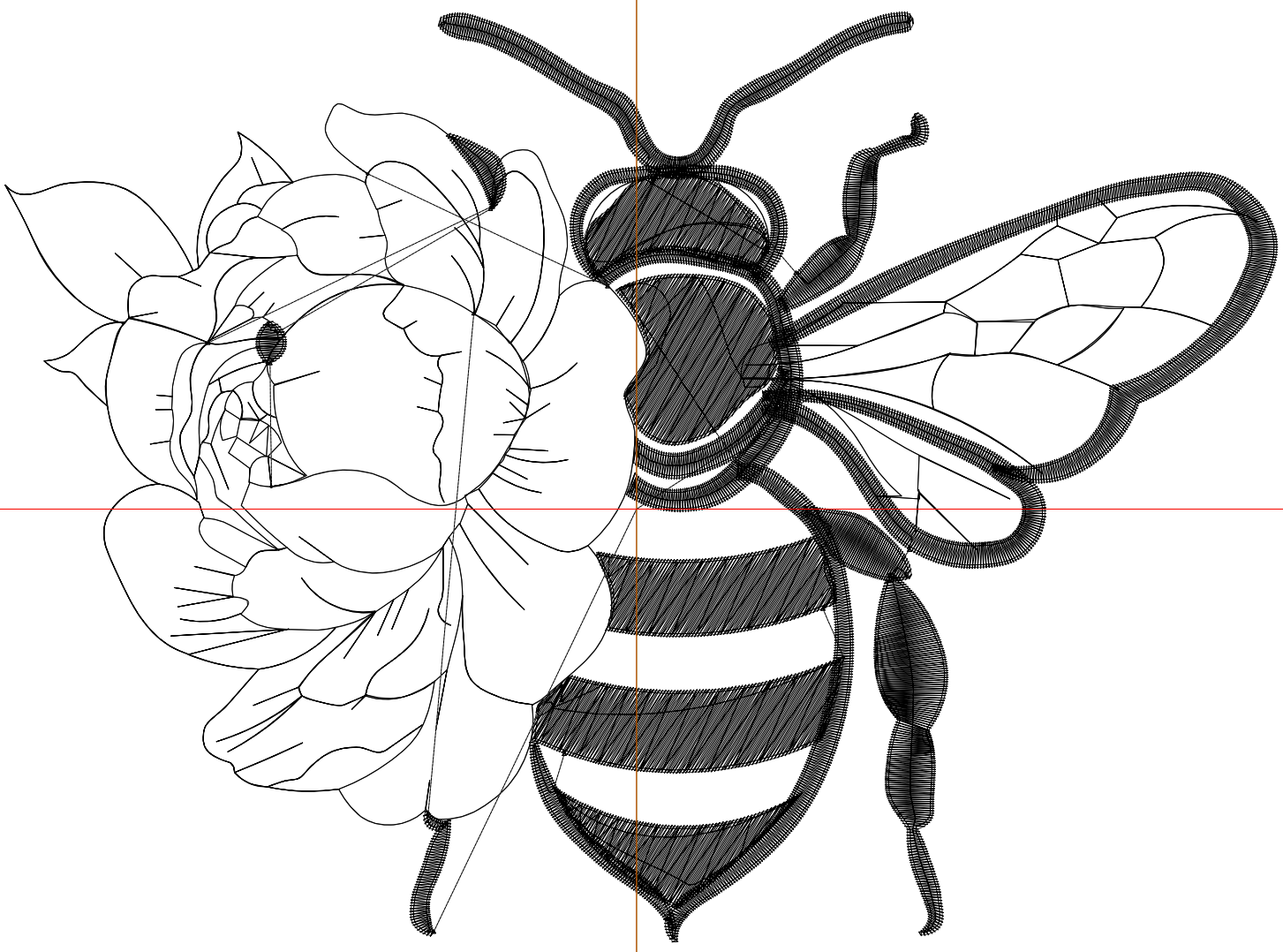
Wilcom EmbroideryStudio - Designing



Design: **7**

Title:

Stitches: 11,486
Height: 5.49 in
Width: 7.51 in
Colors: 1
Colorway: Colorway 1
Zoom: 1:1



Production Worksheet

Wilcom EmbroideryStudio - Designing



Design: **7**

Title:

Stitches: 11,486
 Height: 5.49 in
 Width: 7.51 in
 Colors: 1
 Colorway: Colorway 1
 Zoom: 1:1

Machine format: Tajima
 Color changes: 0
 Stops: 1
 Trims: 12
 Appliqués: 0
 Left: 94.6 mm
 Right: 96.1 mm
 Up: 74.5 mm
 Down: 64.8 mm
 EndX: 0.00 in
 EndY: 0.00 in
 Area 41.18 in²
 Max stitch: 10.8 mm
 Min stitch: 0.0 mm
 Max jump: 6.9 mm
 Total thread: 218.79ft
 Total bobbin: 84.80ft

Stop Sequence:

#	N#	Color	St.	Code	Name	Chart
1.	8	█	11,484	8	Black	Default