

Production Worksheet

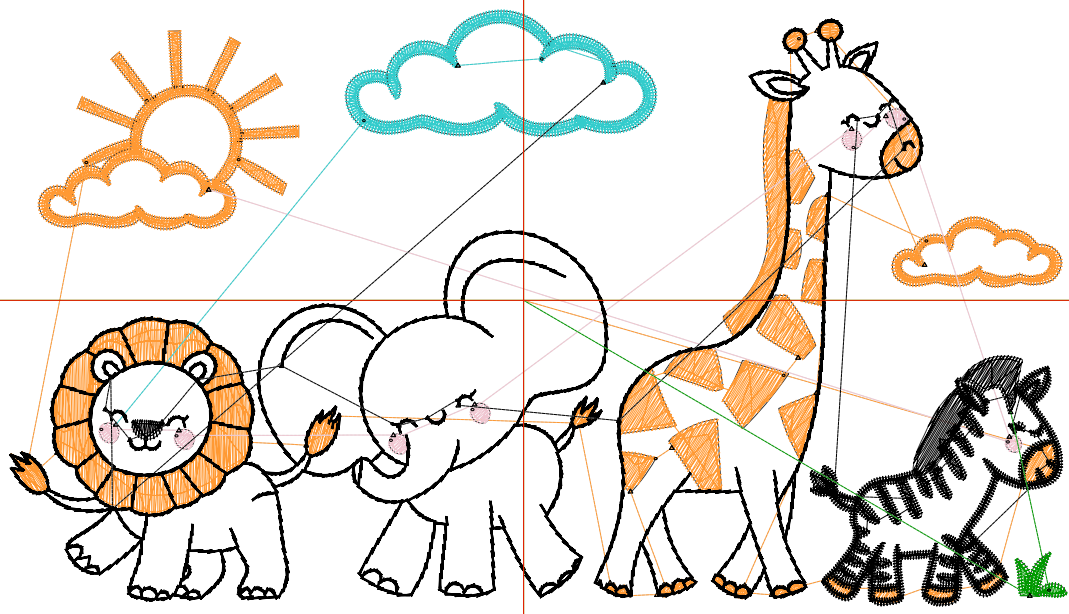
Wilcom EmbroideryStudio - Designing



Design: **5**

Title:

Stitches: 16,574
Height: 3.11 in
Width: 5.51 in
Colors: 5
Colorway: Colorway 1
Zoom: 1:1



Production Worksheet

Wilcom EmbroideryStudio - Designing



Design: **5**

Title:

Stitches: 16,574
 Height: 3.11 in
 Width: 5.51 in
 Colors: 5
 Colorway: Colorway 1
 Zoom: 1:1

Machine format: Tajima
 Color changes: 4
 Stops: 5
 Trims: 66
 Appliqués: 0
 Left: 68.0 mm
 Right: 71.9 mm
 Up: 38.4 mm
 Down: 40.5 mm
 EndX: 0.00 in
 EndY: 0.00 in
 Area 17.12 in²
 Max stitch: 6.8 mm
 Min stitch: 0.0 mm
 Max jump: 6.8 mm
 Total thread: 219.42ft
 Total bobbin: 64.61ft

Stop Sequence:

#	N#	Color	St.	Code	Name	Chart
1.	12		5,510	12	Orange	Default
2.	1		315		R240 G198 B209	
3.	5		984	5	Aqua	Default
4.	8		9,602	8	Black	Default
5.	21		161	1	Dark Green	Default

Production Worksheet

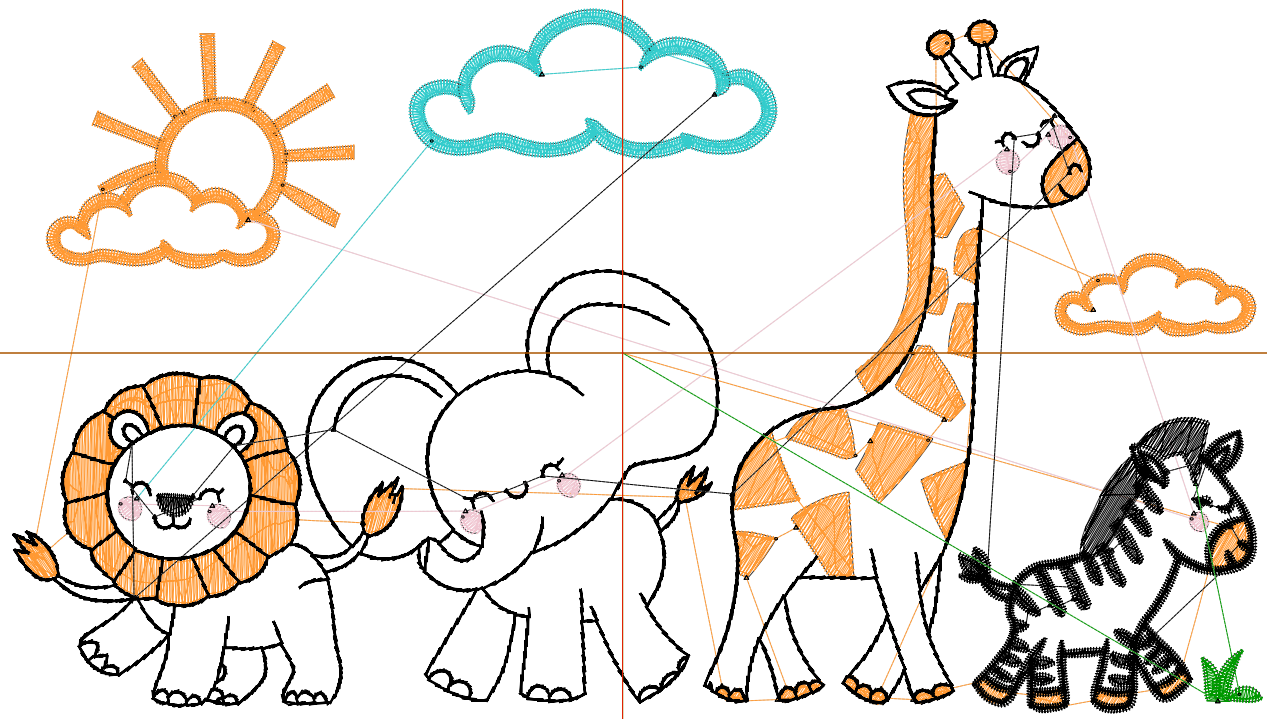
Wilcom EmbroideryStudio - Designing



Design: 6

Title:

Stitches: 19,327
Height: 3.67 in
Width: 6.51 in
Colors: 5
Colorway: Colorway 1
Zoom: 1:1



Production Worksheet

Wilcom EmbroideryStudio - Designing



Design: **6**

Title:

Stitches: 19,327
 Height: 3.67 in
 Width: 6.51 in
 Colors: 5
 Colorway: Colorway 1
 Zoom: 1:1

Machine format: Tajima
 Color changes: 4
 Stops: 5
 Trims: 71
 Appliqués: 0
 Left: 80.7 mm
 Right: 84.6 mm
 Up: 45.6 mm
 Down: 47.7 mm
 EndX: 0.00 in
 EndY: 0.00 in
 Area 23.89 in²
 Max stitch: 7.0 mm
 Min stitch: 0.0 mm
 Max jump: 7.0 mm
 Total thread: 266.68ft
 Total bobbin: 81.91ft

Stop Sequence:

#	N#	Color	St.	Code	Name	Chart
1.	12		6,636	12	Orange	Default
2.	1		348		R240 G198 B209	
3.	5		1,123	5	Aqua	Default
4.	8		11,041	8	Black	Default
5.	21		177	1	Dark Green	Default

Production Worksheet

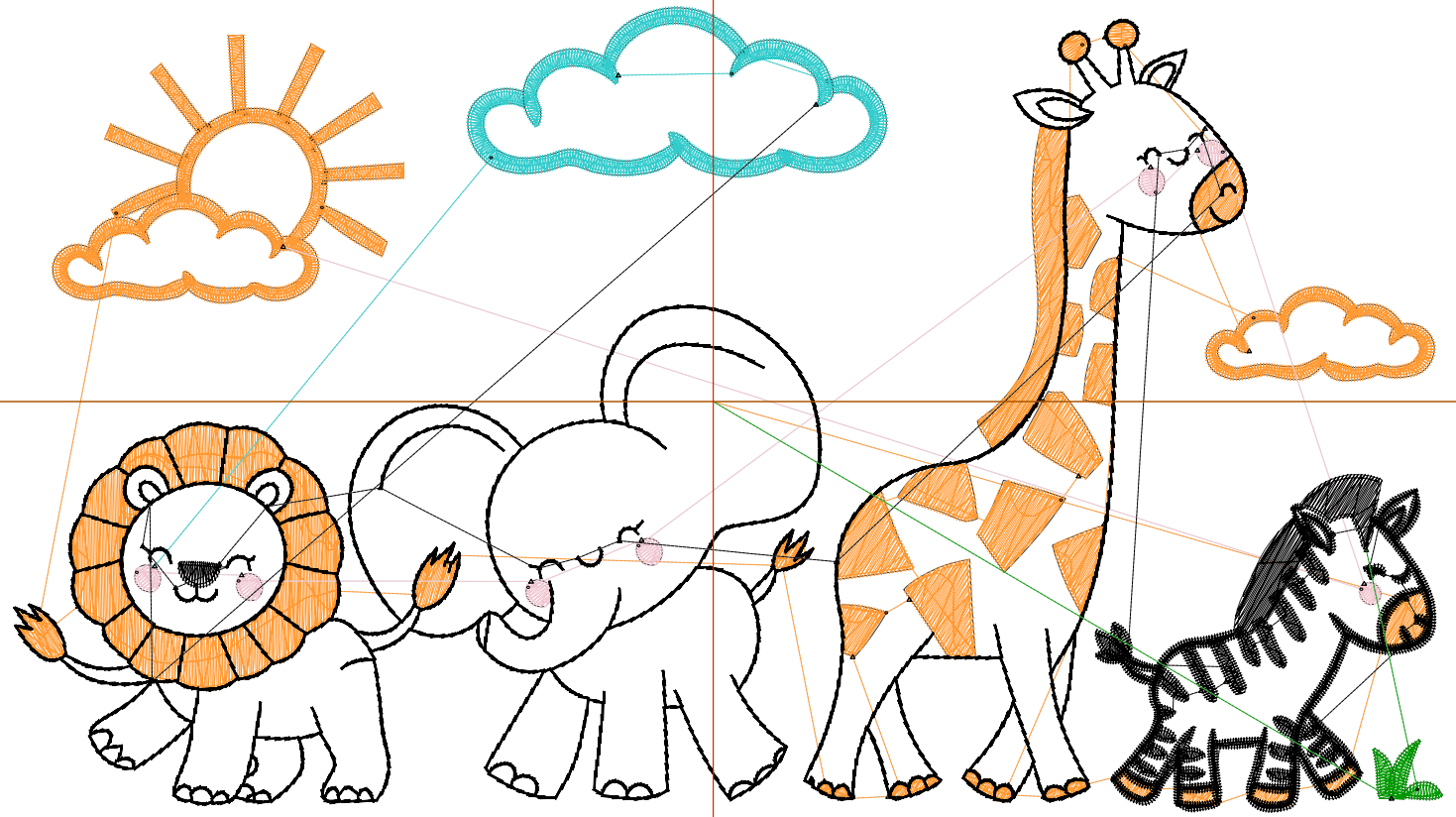
Wilcom EmbroideryStudio - Designing



Design: 7

Title:

Stitches: 22,027
Height: 4.23 in
Width: 7.51 in
Colors: 5
Colorway: Colorway 1
Zoom: 1:1



Production Worksheet

Wilcom EmbroideryStudio - Designing



Design: **7**

Title:

Stitches: 22,027
 Height: 4.23 in
 Width: 7.51 in
 Colors: 5
 Colorway: Colorway 1
 Zoom: 1:1

Machine format: Tajima
 Color changes: 4
 Stops: 5
 Trims: 73
 Appliqués: 0
 Left: 93.4 mm
 Right: 97.3 mm
 Up: 52.7 mm
 Down: 54.8 mm
 EndX: 0.00 in
 EndY: 0.00 in
 Area 31.78 in²
 Max stitch: 7.0 mm
 Min stitch: 0.0 mm
 Max jump: 7.0 mm
 Total thread: 316.54ft
 Total bobbin: 100.96ft

Stop Sequence:

#	N#	Color	St.	Code	Name	Chart
1.	12		7,790	12	Orange	Default
2.	1		374		R240 G198 B209	
3.	5		1,278	5	Aqua	Default
4.	8		12,379	8	Black	Default
5.	21		204	1	Dark Green	Default