

# Production Worksheet

Wilcom EmbroideryStudio - Designing



Design: **3**

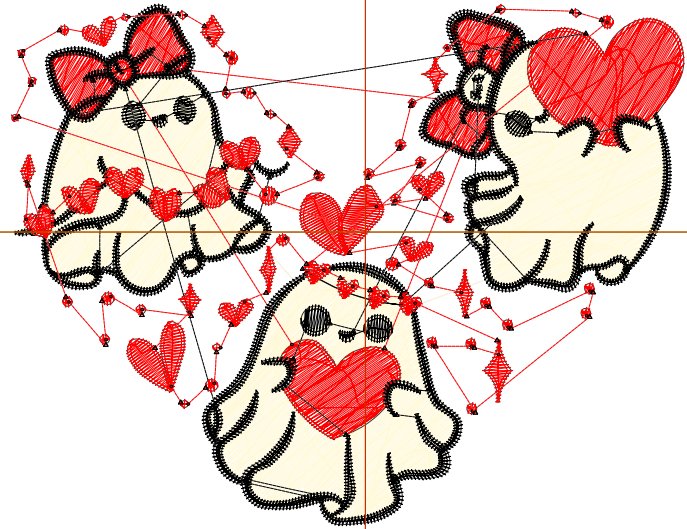
Title:

Stitches: 13,151  
 Height: 2.72 in  
 Width: 3.50 in  
 Colors: 3  
 Colorway: Colorway 1  
 Zoom: 1:1

Machine format: Tajima  
 Color changes: 3  
 Stops: 4  
 Trims: 98  
 Appliqués: 0  
 Left: 46.8 mm  
 Right: 42.2 mm  
 Up: 30.2 mm  
 Down: 38.9 mm  
 EndX: 0.00 in  
 EndY: 0.00 in  
 Area 9.52 in<sup>2</sup>  
 Max stitch: 9.1 mm  
 Min stitch: 0.0 mm  
 Max jump: 6.9 mm  
 Total thread: 192.81ft  
 Total bobbin: 62.35ft

Stop Sequence:

#	N#	Color	St.	Code	Name	Chart
1.	16		3,965	R255	G249 B216	
2.	3		1,681	R255	G0 B0	
3.	8		4,843	R0	G0 B0	
4.	3		2,660	R255	G0 B0	



# Production Worksheet

Wilcom EmbroideryStudio - Designing



Design: **4**

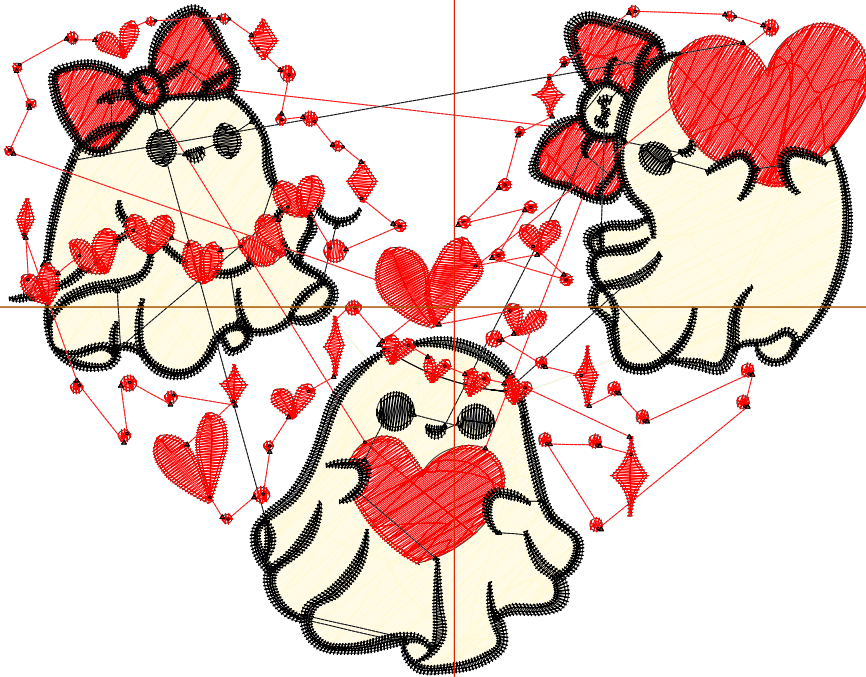
Title:

Stitches: 17,660  
 Height: 3.49 in  
 Width: 4.51 in  
 Colors: 3  
 Colorway: Colorway 1  
 Zoom: 1:1

Machine format: Tajima  
 Color changes: 3  
 Stops: 4  
 Trims: 107  
 Appliqués: 0  
 Left: 59.6 mm  
 Right: 54.9 mm  
 Up: 40.0 mm  
 Down: 48.7 mm  
 EndX: 0.00 in  
 EndY: 0.00 in  
 Area 15.74 in<sup>2</sup>  
 Max stitch: 8.8 mm  
 Min stitch: 0.0 mm  
 Max jump: 6.8 mm  
 Total thread: 281.55ft  
 Total bobbin: 97.40ft

Stop Sequence:

#	N#	Color	St.	Code	Name	Chart
1.	16		5,909	R255	G249 B216	
2.	3		2,377	R255	G0 B0	
3.	8		6,047	R0	G0 B0	
4.	3		3,325	R255	G0 B0	



# Production Worksheet

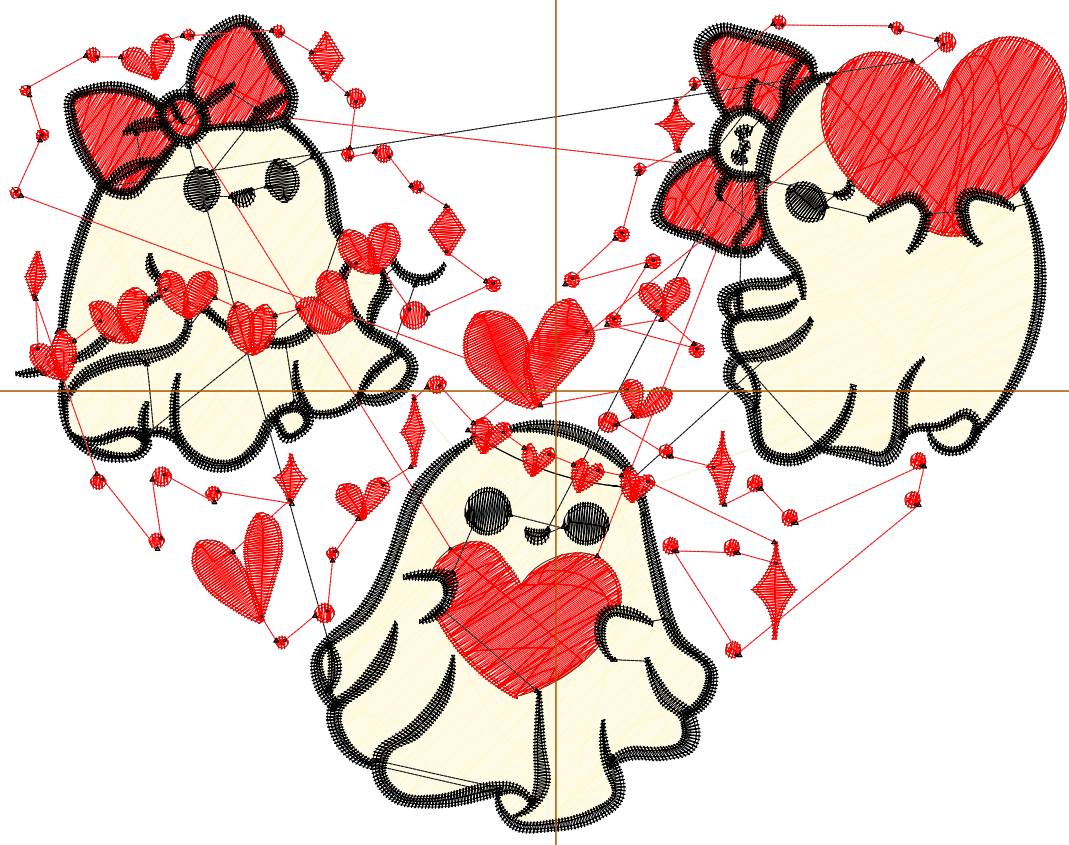
Wilcom EmbroideryStudio - Designing



Design: **5**

Title:

Stitches: 22,550  
Height: 4.26 in  
Width: 5.51 in  
Colors: 3  
Colorway: Colorway 1  
Zoom: 1:1



1

1

2

2

# Production Worksheet

Wilcom EmbroideryStudio - Designing



Design: **5**

Title:

Stitches: 22,550  
 Height: 4.26 in  
 Width: 5.51 in  
 Colors: 3  
 Colorway: Colorway 1  
 Zoom: 1:1

Machine format: Tajima  
 Color changes: 3  
 Stops: 4  
 Trims: 113  
 Appliqués: 0  
 Left: 72.3 mm  
 Right: 67.6 mm  
 Up: 49.8 mm  
 Down: 58.5 mm  
 EndX: 0.00 in  
 EndY: 0.00 in  
 Area 23.48 in<sup>2</sup>  
 Max stitch: 11.2 mm  
 Min stitch: 0.0 mm  
 Max jump: 7.0 mm  
 Total thread: 386.42ft  
 Total bobbin: 140.53ft

Stop Sequence:

#	N#	Color	St.	Code	Name	Chart
1.	16		8,240		R255 G249 B216	
2.	3		3,253		R255 G0 B0	
3.	8		7,242		R0 G0 B0	
4.	3		3,813		R255 G0 B0	

# Production Worksheet

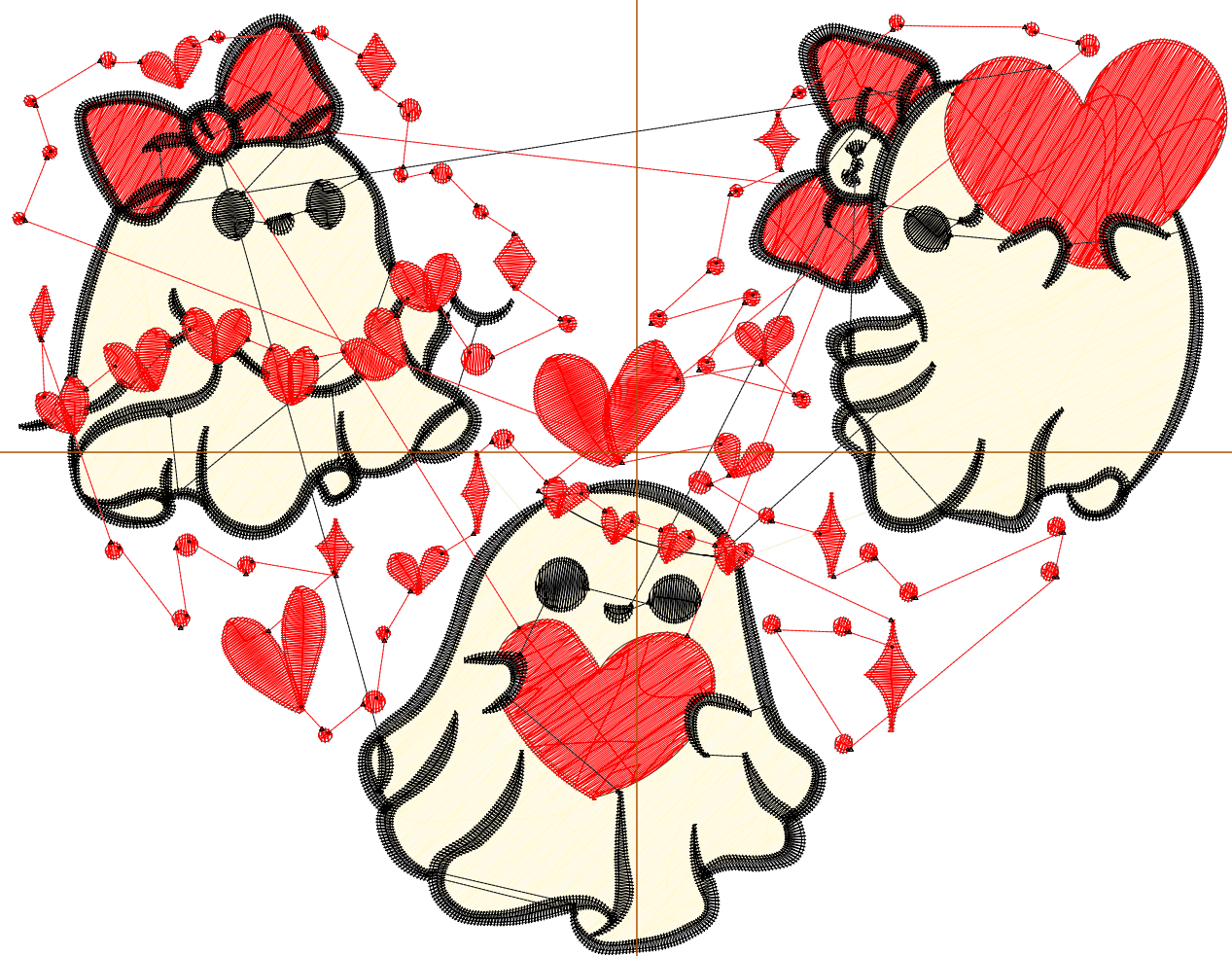
Wilcom EmbroideryStudio - Designing



Design: **6**

Title:

Stitches: 27,944  
Height: 5.04 in  
Width: 6.51 in  
Colors: 3  
Colorway: Colorway 1  
Zoom: 1:1



# Production Worksheet

Wilcom EmbroideryStudio - Designing



Design: **6**

Title:

Stitches: 27,944  
 Height: 5.04 in  
 Width: 6.51 in  
 Colors: 3  
 Colorway: Colorway 1  
 Zoom: 1:1

Machine format: Tajima  
 Color changes: 3  
 Stops: 4  
 Trims: 117  
 Appliqués: 0  
 Left: 85.0 mm  
 Right: 80.3 mm  
 Up: 59.6 mm  
 Down: 68.3 mm  
 EndX: 0.00 in  
 EndY: 0.00 in  
 Area 32.78 in<sup>2</sup>  
 Max stitch: 9.7 mm  
 Min stitch: 0.0 mm  
 Max jump: 7.0 mm  
 Total thread: 507.78ft  
 Total bobbin: 191.47ft

Stop Sequence:

#	N#	Color	St.	Code	Name	Chart
1.	16		10,955		R255 G249 B216	
2.	3		4,218		R255 G0 B0	
3.	8		8,447		R0 G0 B0	
4.	3		4,322		R255 G0 B0	

# Production Worksheet

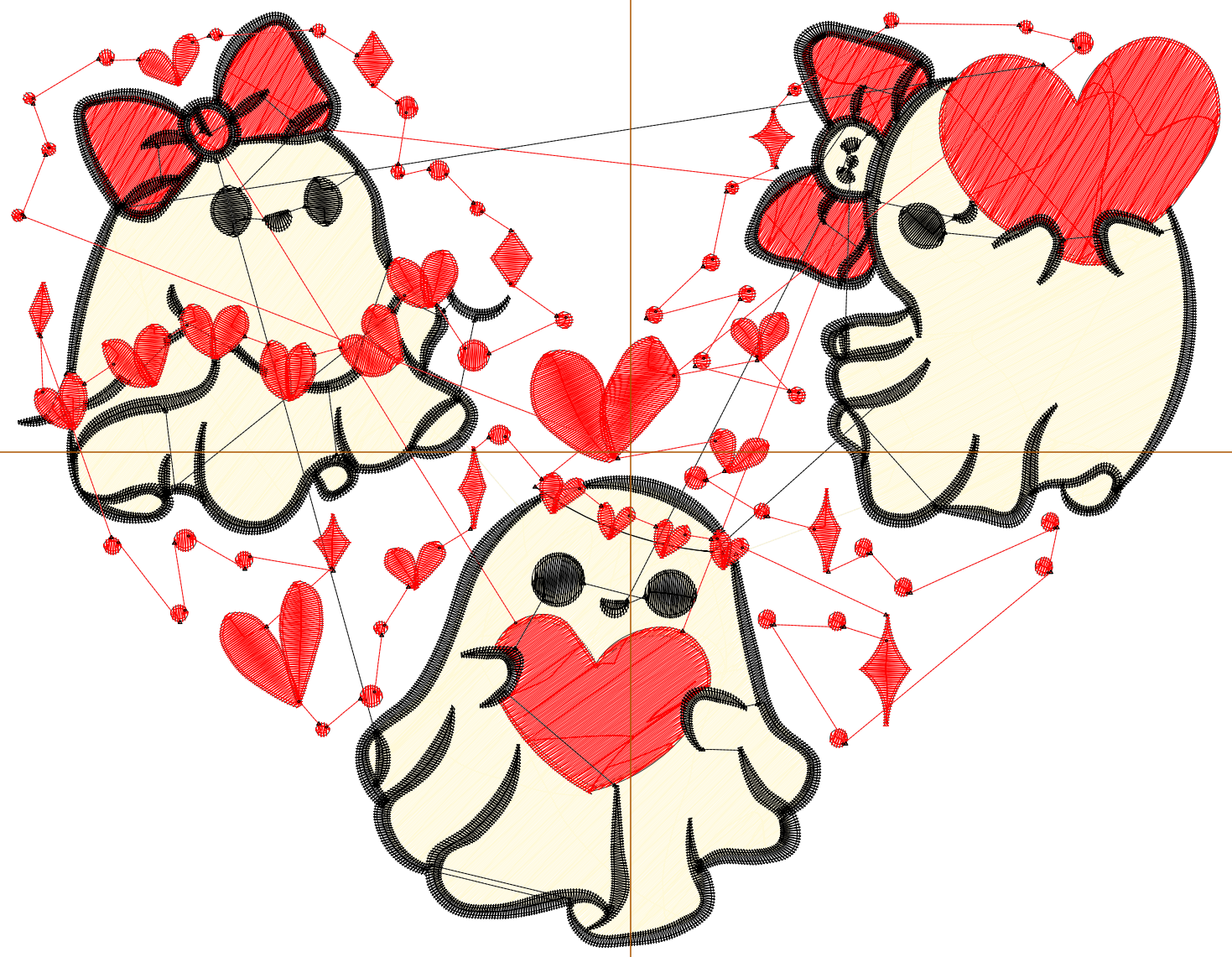
Wilcom EmbroideryStudio - Designing



Design: 7

Title:

Stitches: 33,787  
Height: 5.81 in  
Width: 7.51 in  
Colors: 3  
Colorway: Colorway 1  
Zoom: 1:1



# Production Worksheet

Wilcom EmbroideryStudio - Designing



Design: **7**

Title:

Stitches: 33,787  
 Height: 5.81 in  
 Width: 7.51 in  
 Colors: 3  
 Colorway: Colorway 1  
 Zoom: 1:1

Machine format: Tajima  
 Color changes: 3  
 Stops: 4  
 Trims: 120  
 Appliqués: 0  
 Left: 97.7 mm  
 Right: 93.0 mm  
 Up: 69.5 mm  
 Down: 78.1 mm  
 EndX: 0.00 in  
 EndY: 0.00 in  
 Area 43.63 in<sup>2</sup>  
 Max stitch: 11.1 mm  
 Min stitch: 0.0 mm  
 Max jump: 7.0 mm  
 Total thread: 643.15ft  
 Total bobbin: 248.97ft

Stop Sequence:

#	N#	Color	St.	Code	Name	Chart
1.	16		14,029		R255 G249 B216	
2.	3		5,192		R255 G0 B0	
3.	8		9,669		R0 G0 B0	
4.	3		4,895		R255 G0 B0	