

Production Worksheet

Wilcom EmbroideryStudio - Designing



Design: **3**

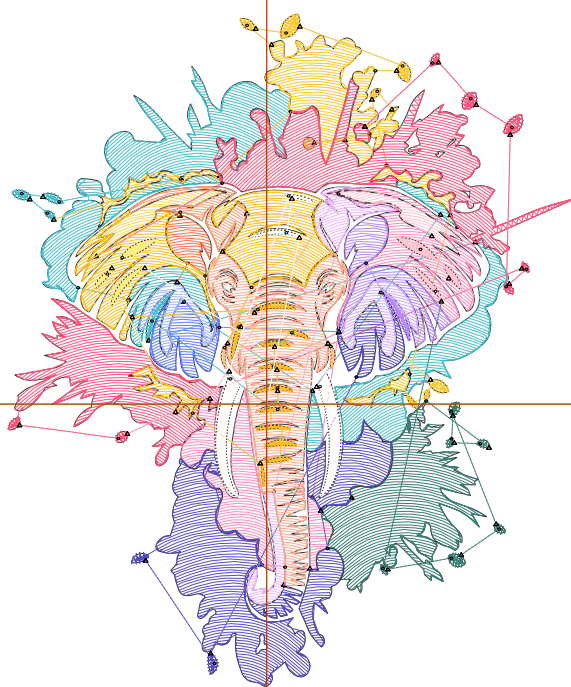
Title:

Stitches: 11,650
 Height: 3.50 in
 Width: 2.95 in
 Colors: 20
 Colorway: Colorway 1
 Zoom: 1:1

Machine format: Tajima
 Color changes: 19
 Stops: 20
 Trims: 72
 Appliqués: 0
 Left: 34.3 mm
 Right: 40.6 mm
 Up: 51.7 mm
 Down: 37.3 mm
 EndX: 0.00 in
 EndY: 0.00 in
 Area 10.32 in²
 Max stitch: 8.8 mm
 Min stitch: 0.0 mm
 Max jump: 7.0 mm
 Total thread: 142.28ft
 Total bobbin: 35.13ft

Stop Sequence:

#	N#	Color	St.	Code	Name	Chart
1.	1		1,578	R72	G191 B204	
2.	2		943	R255	G199 B43	
3.	19		95	R255	G212 B94	
4.	4		1,715	R255	G82 B122	
5.	5		791	R255	G141 B188	
6.	6		226	R255	G196 B208	
7.	7		800	R57	G125 B115	
8.	8		1,252	R87	G77 B194	
9.	10		316	R182	G136 B255	
10.	9		187	R206	G174 B255	
11.	11		237	R97	G126 B255	
12.	12		165	R159	G180 B255	
13.	13		88	R255	G113 B66	
14.	14		190	R255	G154 B114	
15.	15		306	R240	G183 B255	
16.	17		1,115	R255	G171 B143	
17.	16		74	R255	G192 B136	
18.	18		1,093	R255	G189 B23	
19.	20		146	R255	G236 B131	
20.	3		331	R255	G251 B248	



Production Worksheet

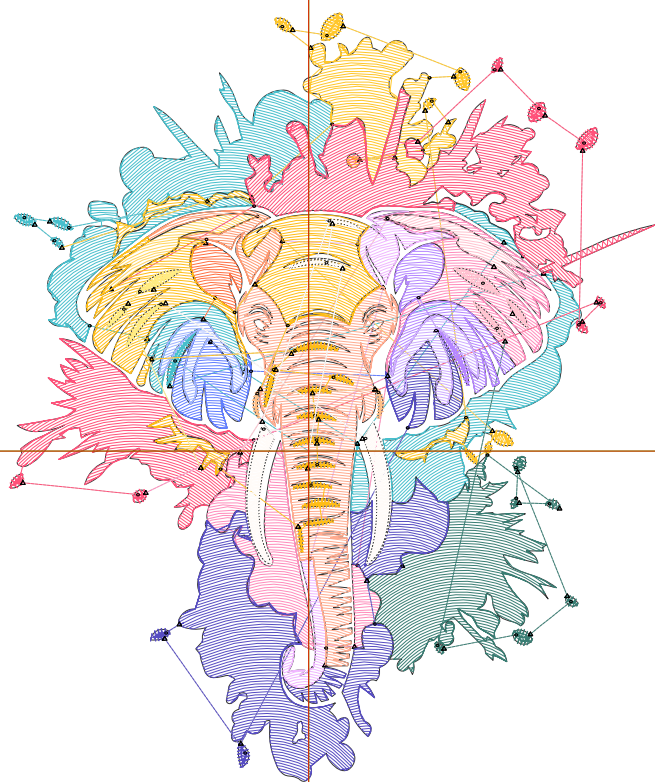
Wilcom EmbroideryStudio - Designing



Design: **4**

Title:

Stitches: 13,750
Height: 4.00 in
Width: 3.37 in
Colors: 20
Colorway: Colorway 1
Zoom: 1:1



Machine format: Tajima
Color changes: 19
Stops: 20
Trims: 74
Appliqués: 0
Left: 39.6 mm
Right: 46.0 mm
Up: 58.0 mm
Down: 43.6 mm
EndX: 0.00 in
EndY: 0.00 in
Area 13.48 in²
Max stitch: 10.0 mm
Min stitch: 0.0 mm
Max jump: 7.0 mm
Total thread: 171.52ft
Total bobbin: 44.29ft

Stop Sequence:

#	N#	Color	St.	Code	Name	Chart
1.	1		1,864	R72	G191 B204	
2.	2		980	R255	G199 B43	
3.	19		141	R255	G212 B94	
4.	4		2,034	R255	G82 B122	
5.	5		1,006	R255	G141 B188	
6.	6		256	R255	G196 B208	
7.	7		931	R57	G125 B115	
8.	8		1,508	R87	G77 B194	
9.	10		411	R182	G136 B255	
10.	9		211	R206	G174 B255	
11.	11		280	R97	G126 B255	
12.	12		209	R159	G180 B255	
13.	13		119	R255	G113 B66	
14.	14		214	R255	G154 B114	
15.	15		361	R240	G183 B255	
16.	17		1,320	R255	G171 B143	
17.	16		77	R255	G192 B136	
18.	18		1,289	R255	G189 B23	
19.	20		163	R255	G236 B131	
20.	3		374	R255	G251 B248	

Production Worksheet

Wilcom EmbroideryStudio - Designing



Design: **4**

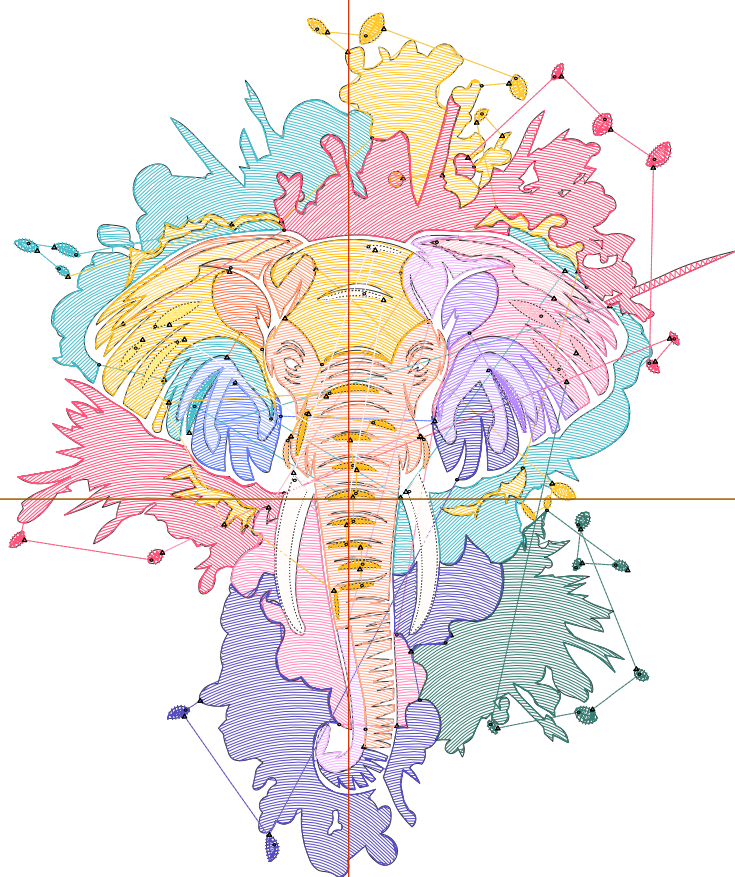
Title:

Stitches: 16,102
Height: 4.50 in
Width: 3.79 in
Colors: 20
Colorway: Colorway 1
Zoom: 1:1

Machine format: Tajima
Color changes: 19
Stops: 20
Trims: 77
Appliqués: 0
Left: 45.0 mm
Right: 51.3 mm
Up: 64.4 mm
Down: 50.0 mm
EndX: 0.00 in
EndY: 0.00 in
Area: 17.06 in²
Max stitch: 11.2 mm
Min stitch: 0.0 mm
Max jump: 7.0 mm
Total thread: 203.91ft
Total bobbin: 54.33ft

Stop Sequence:

#	N#	Color	St.	Code	Name	Chart
1.	1		2,203	R72	G191 B204	
2.	2		1,241	R255	G199 B43	
3.	19		119	R255	G212 B94	
4.	4		2,354	R255	G82 B122	
5.	5		1,217	R255	G141 B188	
6.	6		291	R255	G196 B208	
7.	7		1,094	R57	G125 B115	
8.	8		1,793	R87	G77 B194	
9.	10		458	R182	G136 B255	
10.	9		246	R206	G174 B255	
11.	11		328	R97	G126 B255	
12.	12		230	R159	G180 B255	
13.	13		125	R255	G113 B66	
14.	14		252	R255	G154 B114	
15.	15		420	R240	G183 B255	
16.	17		1,570	R255	G171 B143	
17.	16		81	R255	G192 B136	
18.	18		1,478	R255	G189 B23	
19.	20		184	R255	G236 B131	
20.	3		416	R255	G251 B248	



Production Worksheet

Wilcom EmbroideryStudio - Designing



Design: **5**

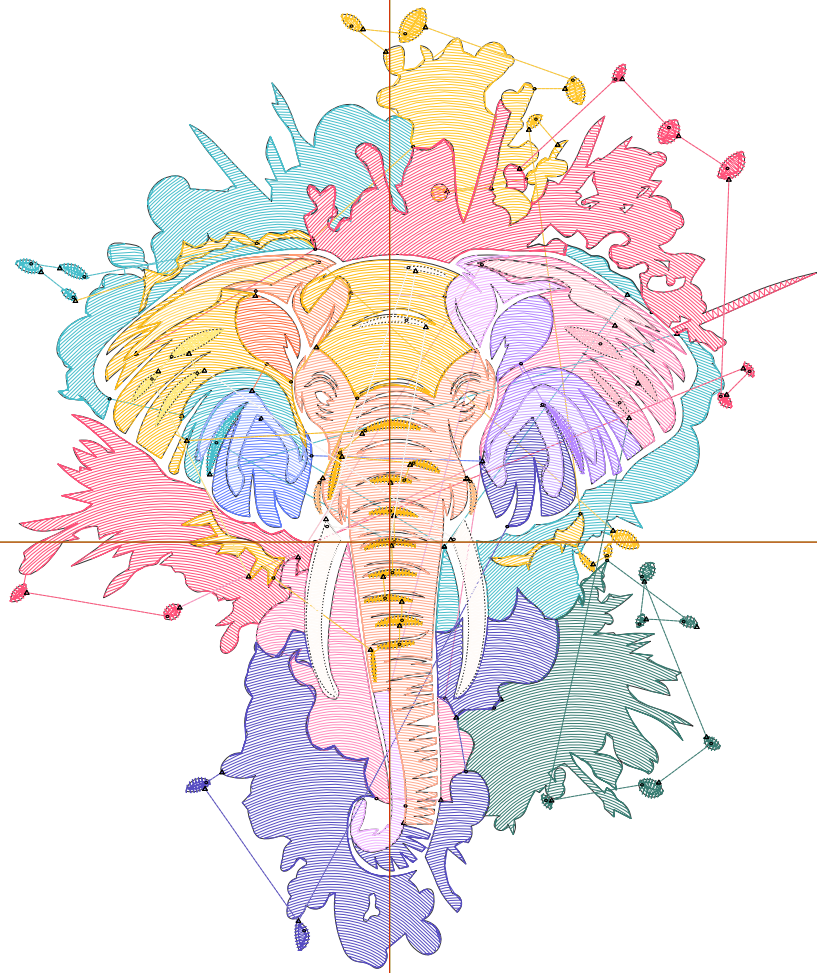
Title:

Stitches: 18,342
 Height: 5.00 in
 Width: 4.20 in
 Colors: 20
 Colorway: Colorway 1
 Zoom: 1:1

Machine format: Tajima
 Color changes: 19
 Stops: 20
 Trims: 78
 Appliqués: 0
 Left: 50.3 mm
 Right: 56.3 mm
 Up: 70.7 mm
 Down: 56.3 mm
 EndX: 0.00 in
 EndY: 0.00 in
 Area: 21.00 in²
 Max stitch: 10.6 mm
 Min stitch: 0.0 mm
 Max jump: 6.9 mm
 Total thread: 236.15ft
 Total bobbin: 64.73ft

Stop Sequence:

#	N#	Color	St.	Code	Name	Chart
1.	1		2,487	R72	G191 B204	
2.	2		1,262	R255	G199 B43	
3.	19		183	R255	G212 B94	
4.	4		2,689	R255	G82 B122	
5.	5		1,383	R255	G141 B188	
6.	6		309	R255	G196 B208	
7.	7		1,264	R57	G125 B115	
8.	8		2,109	R87	G77 B194	
9.	10		526	R182	G136 B255	
10.	9		283	R206	G174 B255	
11.	11		378	R97	G126 B255	
12.	12		272	R159	G180 B255	
13.	13		143	R255	G113 B66	
14.	14		280	R255	G154 B114	
15.	15		488	R240	G183 B255	
16.	17		1,832	R255	G171 B143	
17.	16		85	R255	G192 B136	
18.	18		1,705	R255	G189 B23	
19.	20		200	R255	G236 B131	
20.	3		462	R255	G251 B248	



Production Worksheet

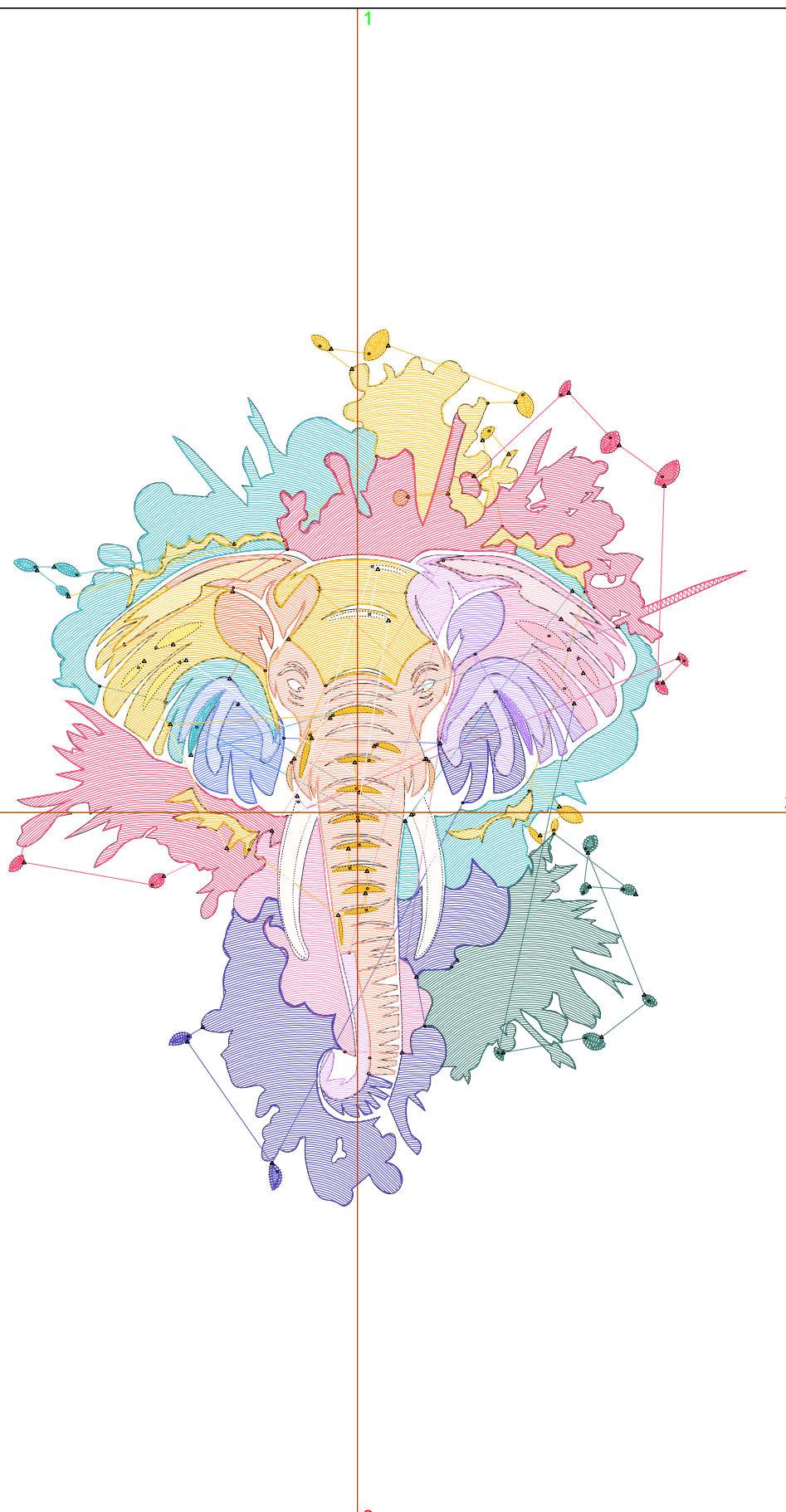
Wilcom EmbroideryStudio - Designing



Design: **5**

Title:

Stitches: 21,060
 Height: 5.50 in
 Width: 4.63 in
 Colors: 20
 Colorway: Colorway 1
 Zoom: 1:1



Machine format: Tajima
 Color changes: 19
 Stops: 20
 Trims: 80
 Appliqués: 0
 Left: 55.6 mm
 Right: 62.0 mm
 Up: 77.1 mm
 Down: 62.7 mm
 EndX: 0.00 in
 EndY: 0.00 in
 Area: 25.48 in²
 Max stitch: 11.6 mm
 Min stitch: 0.0 mm
 Max jump: 7.0 mm
 Total thread: 274.82ft
 Total bobbin: 77.08ft

Stop Sequence:

#	N#	Color	St.	Code	Name	Chart
1.	1		2,870	R72	G191 B204	
2.	2		1,572	R255	G199 B43	
3.	19		167	R255	G212 B94	
4.	4		3,101	R255	G82 B122	
5.	5		1,580	R255	G141 B188	
6.	6		352	R255	G196 B208	
7.	7		1,433	R57	G125 B115	
8.	8		2,445	R87	G77 B194	
9.	10		558	R182	G136 B255	
10.	9		321	R206	G174 B255	
11.	11		419	R97	G126 B255	
12.	12		301	R159	G180 B255	
13.	13		171	R255	G113 B66	
14.	14		336	R255	G154 B114	
15.	15		547	R240	G183 B255	
16.	17		2,123	R255	G171 B143	
17.	16		90	R255	G192 B136	
18.	18		1,944	R255	G189 B23	
19.	20		222	R255	G236 B131	
20.	3		506	R255	G251 B248	

Production Worksheet

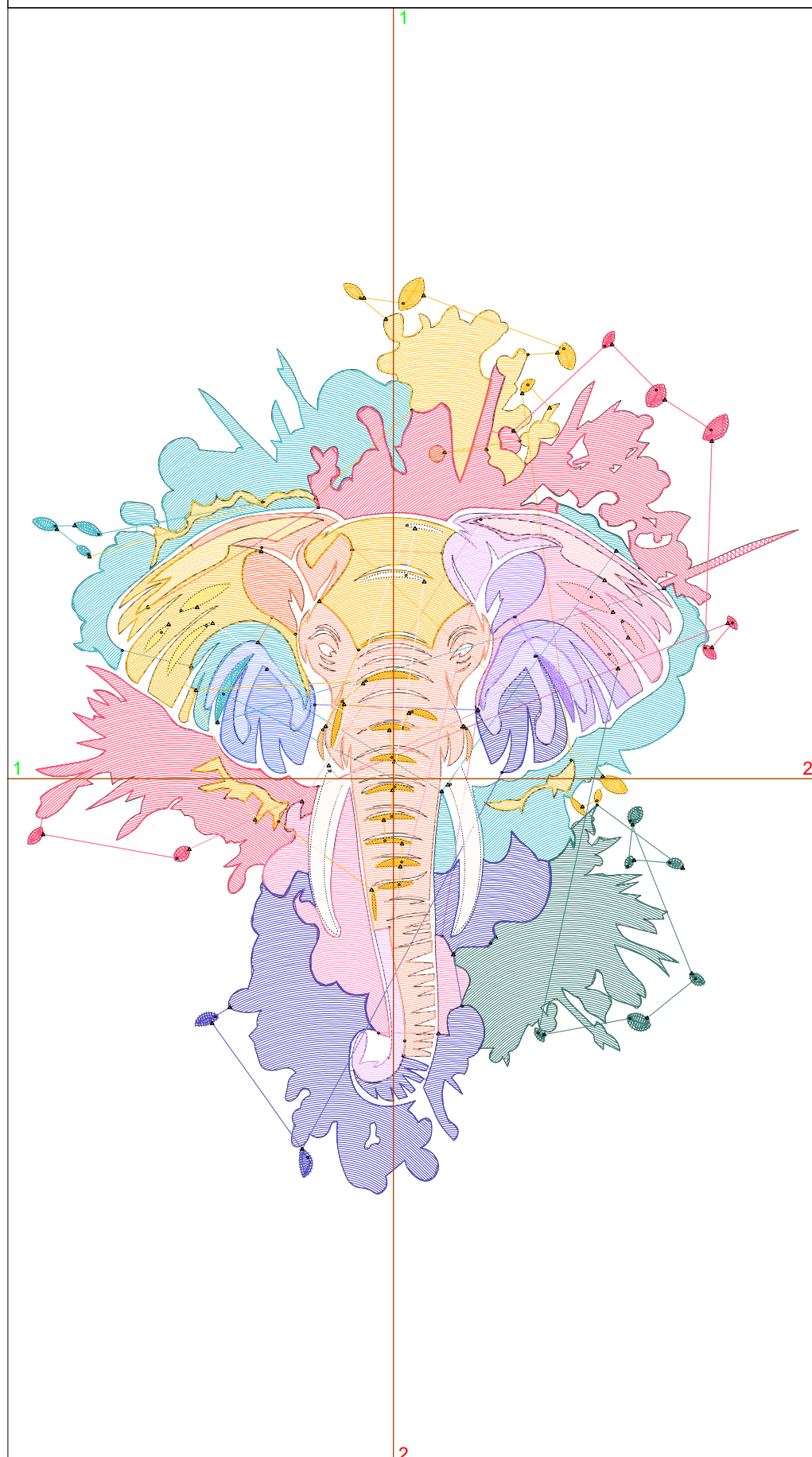
Wilcom EmbroideryStudio - Designing



Design: **6**

Title:

Stitches: 23,415
 Height: 6.00 in
 Width: 5.04 in
 Colors: 20
 Colorway: Colorway 1
 Zoom: 1:1



Machine format: Tajima
 Color changes: 19
 Stops: 20
 Trims: 79
 Appliqués: 0
 Left: 61.0 mm
 Right: 67.1 mm
 Up: 83.4 mm
 Down: 69.1 mm
 EndX: 0.00 in
 EndY: 0.00 in
 Area: 30.27 in²
 Max stitch: 7.0 mm
 Min stitch: 0.0 mm
 Max jump: 7.0 mm
 Total thread: 310.41ft
 Total bobbin: 89.01ft

Stop Sequence:

#	N#	Color	St.	Code	Name	Chart
1.	1		3,202	R72	G191 B204	
2.	2		1,570	R255	G199 B43	
3.	19		236	R255	G212 B94	
4.	4		3,443	R255	G82 B122	
5.	5		1,766	R255	G141 B188	
6.	6		394	R255	G196 B208	
7.	7		1,645	R57	G125 B115	
8.	8		2,776	R87	G77 B194	
9.	10		630	R182	G136 B255	
10.	9		362	R206	G174 B255	
11.	11		479	R97	G126 B255	
12.	12		326	R159	G180 B255	
13.	13		193	R255	G113 B66	
14.	14		365	R255	G154 B114	
15.	15		607	R240	G183 B255	
16.	17		2,382	R255	G171 B143	
17.	16		94	R255	G192 B136	
18.	18		2,158	R255	G189 B23	
19.	20		236	R255	G236 B131	
20.	3		549	R255	G251 B248	

Production Worksheet

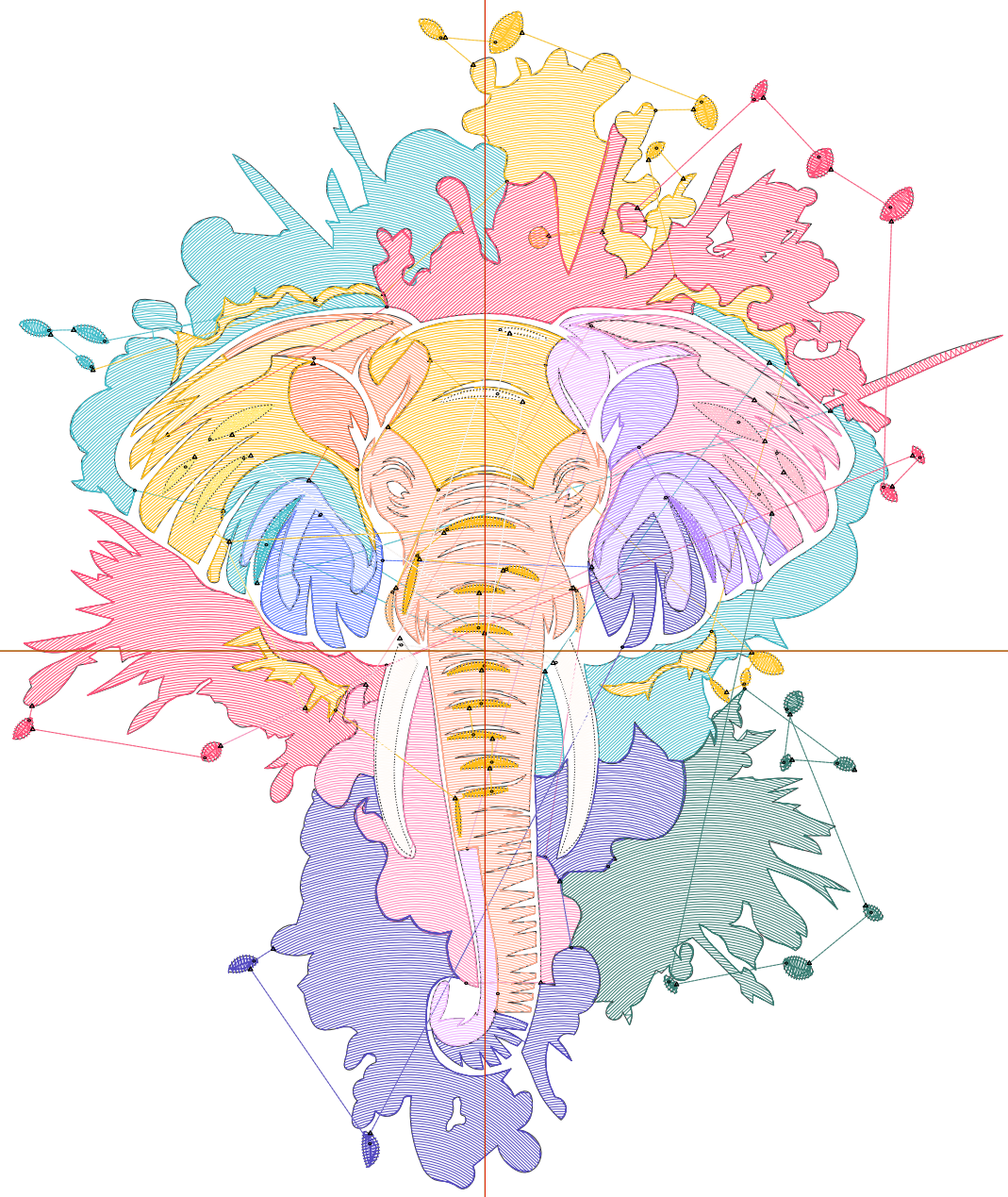
Wilcom EmbroideryStudio - Designing



Design: **6**

Title:

Stitches: 26,506
Height: 6.50 in
Width: 5.47 in
Colors: 20
Colorway: Colorway 1
Zoom: 1:1



1

2

1

2

Production Worksheet

Wilcom EmbroideryStudio - Designing



Design: **6**

Title:

Stitches: 26,506
 Height: 6.50 in
 Width: 5.47 in
 Colors: 20
 Colorway: Colorway 1
 Zoom: 1:1

Machine format: Tajima
 Color changes: 19
 Stops: 20
 Trims: 81
 Appliqués: 0
 Left: 66.3 mm
 Right: 72.7 mm
 Up: 89.8 mm
 Down: 75.4 mm
 EndX: 0.00 in
 EndY: 0.00 in
 Area 35.58 in²
 Max stitch: 6.9 mm
 Min stitch: 0.0 mm
 Max jump: 7.0 mm
 Total thread: 355.01ft
 Total bobbin: 103.42ft

Stop Sequence:

#	N#	Color	St.	Code	Name	Chart
1.	1		3,631		R72 G191 B204	
2.	2		1,955		R255 G199 B43	
3.	19		217		R255 G212 B94	
4.	4		3,916		R255 G82 B122	
5.	5		2,048		R255 G141 B188	
6.	6		435		R255 G196 B208	
7.	7		1,871		R57 G125 B115	
8.	8		3,107		R87 G77 B194	
9.	10		713		R182 G136 B255	
10.	9		395		R206 G174 B255	
11.	11		536		R97 G126 B255	
12.	12		361		R159 G180 B255	
13.	13		206		R255 G113 B66	
14.	14		391		R255 G154 B114	
15.	15		703		R240 G183 B255	
16.	17		2,676		R255 G171 B143	
17.	16		103		R255 G192 B136	
18.	18		2,387		R255 G189 B23	
19.	20		253		R255 G236 B131	
20.	3		600		R255 G251 B248	

Production Worksheet

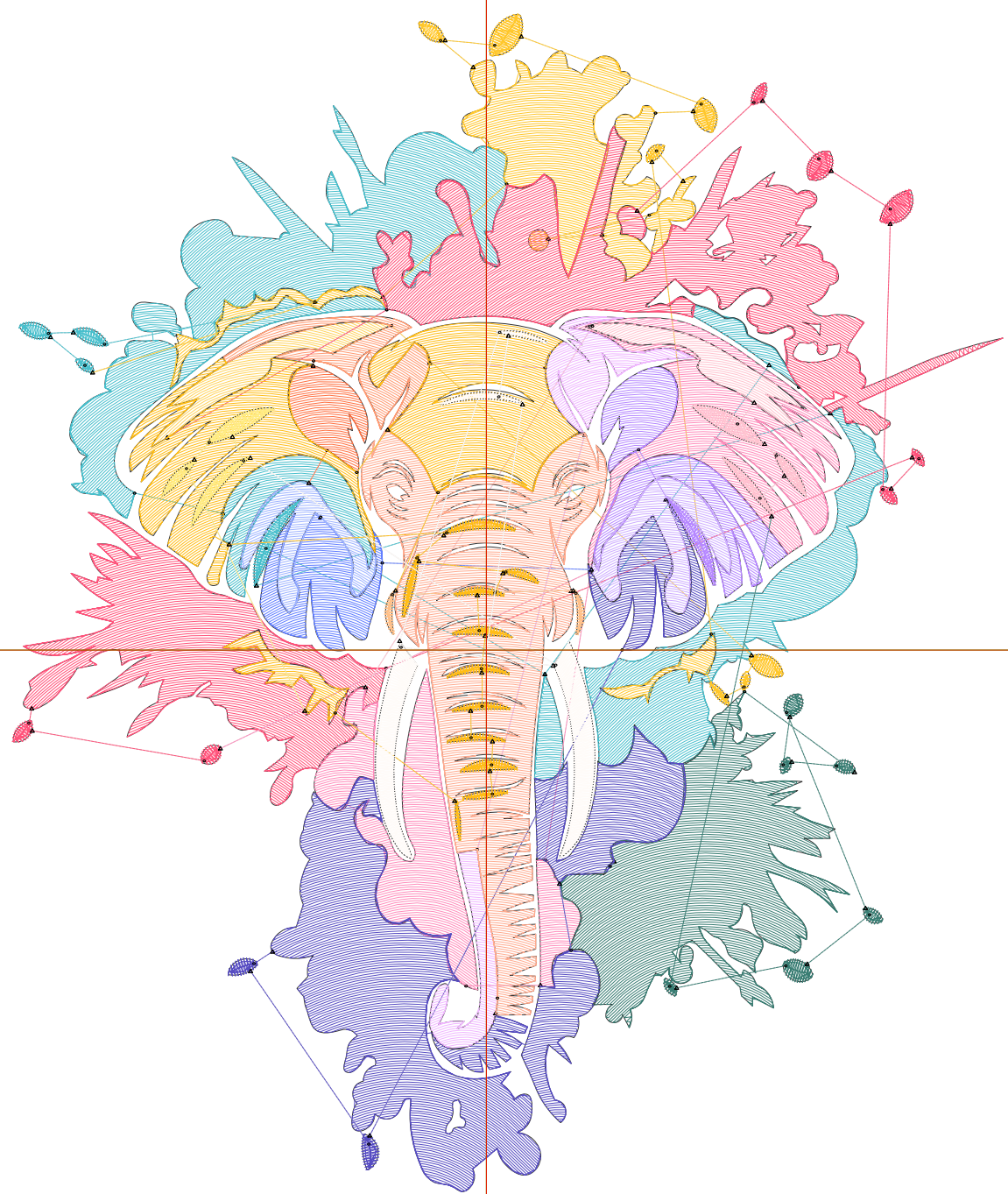
Wilcom EmbroideryStudio - Designing



Design: **7**

Title:

Stitches: 29,056
Height: 7.00 in
Width: 5.89 in
Colors: 20
Colorway: Colorway 1
Zoom: 1:1



Production Worksheet

Wilcom EmbroideryStudio - Designing



Design: **7**

Title:

Stitches: 29,056
 Height: 7.00 in
 Width: 5.89 in
 Colors: 20
 Colorway: Colorway 1
 Zoom: 1:1

Machine format: Tajima
 Color changes: 19
 Stops: 20
 Trims: 80
 Appliqués: 0
 Left: 71.7 mm
 Right: 78.0 mm
 Up: 96.1 mm
 Down: 81.8 mm
 EndX: 0.00 in
 EndY: 0.00 in
 Area 41.26 in²
 Max stitch: 7.5 mm
 Min stitch: 0.0 mm
 Max jump: 7.0 mm
 Total thread: 395.05ft
 Total bobbin: 117.23ft

Stop Sequence:

#	N#	Color	St.	Code	Name	Chart
1.	1		4,012	R72	G191 B204	
2.	2		1,905	R255	G199 B43	
3.	19		229	R255	G212 B94	
4.	4		4,310	R255	G82 B122	
5.	5		2,283	R255	G141 B188	
6.	6		466	R255	G196 B208	
7.	7		2,029	R57	G125 B115	
8.	8		3,476	R87	G77 B194	
9.	10		821	R182	G136 B255	
10.	9		433	R206	G174 B255	
11.	11		580	R97	G126 B255	
12.	12		414	R159	G180 B255	
13.	13		237	R255	G113 B66	
14.	14		449	R255	G154 B114	
15.	15		773	R240	G183 B255	
16.	17		3,018	R255	G171 B143	
17.	16		112	R255	G192 B136	
18.	18		2,590	R255	G189 B23	
19.	20		270	R255	G236 B131	
20.	3		647	R255	G251 B248	

Production Worksheet

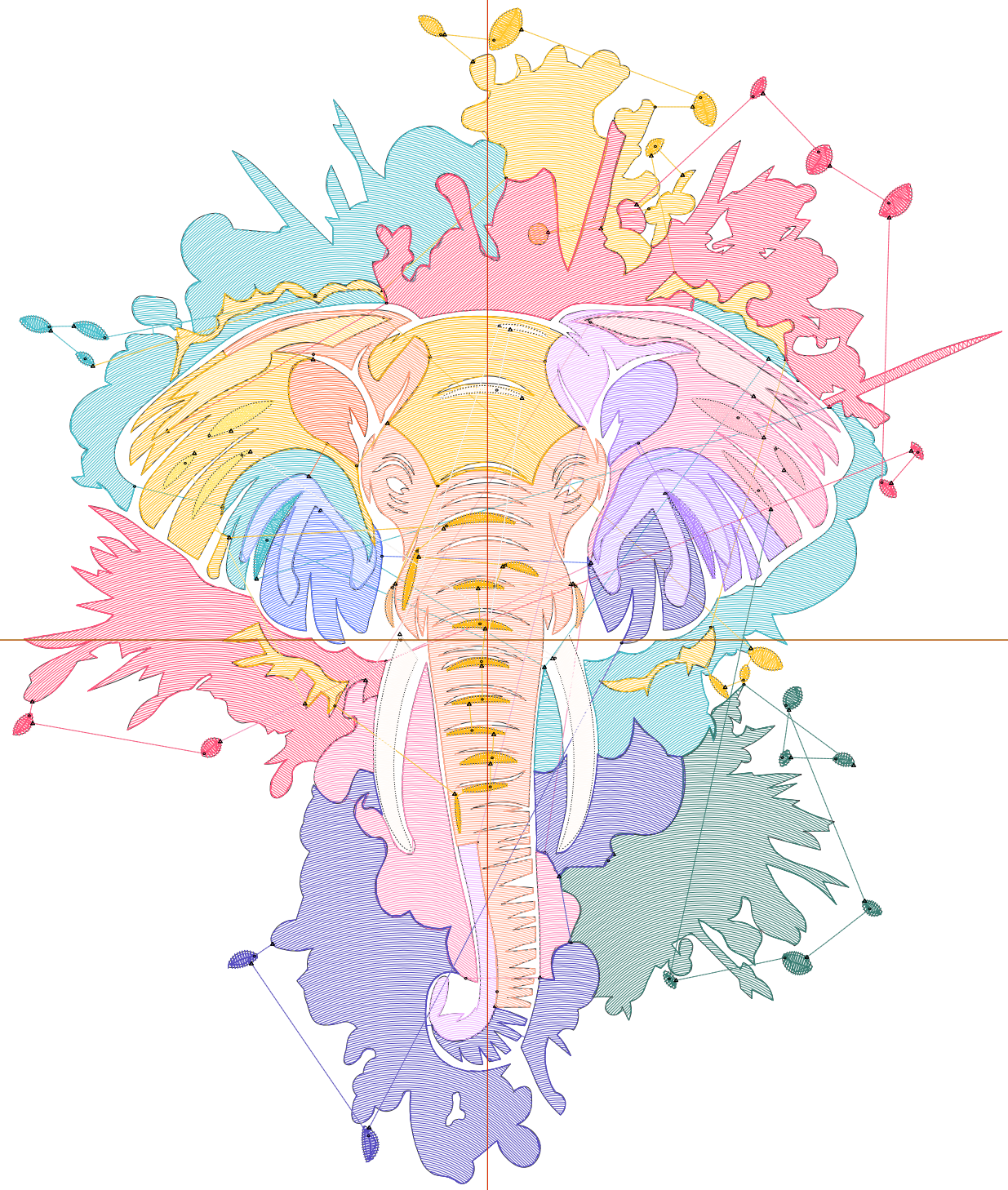
Wilcom EmbroideryStudio - Designing



Design: **7**

Title:

Stitches: 32,426
Height: 7.50 in
Width: 6.31 in
Colors: 20
Colorway: Colorway 1
Zoom: 1:1



Production Worksheet

Wilcom EmbroideryStudio - Designing



Design: **7**

Title:

Stitches: 32,426
 Height: 7.50 in
 Width: 6.31 in
 Colors: 20
 Colorway: Colorway 1
 Zoom: 1:1

Machine format: Tajima
 Color changes: 19
 Stops: 20
 Trims: 81
 Appliqués: 0
 Left: 77.0 mm
 Right: 83.3 mm
 Up: 102.5 mm
 Down: 88.1 mm
 EndX: 0.00 in
 EndY: 0.00 in
 Area 47.36 in²
 Max stitch: 8.0 mm
 Min stitch: 0.0 mm
 Max jump: 7.0 mm
 Total thread: 445.46ft
 Total bobbin: 134.01ft

Stop Sequence:

#	N#	Color	St.	Code	Name	Chart
1.	1		4,435	R72	G191 B204	
2.	2		2,305	R255	G199 B43	
3.	19		258	R255	G212 B94	
4.	4		4,817	R255	G82 B122	
5.	5		2,515	R255	G141 B188	
6.	6		498	R255	G196 B208	
7.	7		2,290	R57	G125 B115	
8.	8		3,883	R87	G77 B194	
9.	10		902	R182	G136 B255	
10.	9		481	R206	G174 B255	
11.	11		639	R97	G126 B255	
12.	12		445	R159	G180 B255	
13.	13		260	R255	G113 B66	
14.	14		485	R255	G154 B114	
15.	15		860	R240	G183 B255	
16.	17		3,365	R255	G171 B143	
17.	16		115	R255	G192 B136	
18.	18		2,892	R255	G189 B23	
19.	20		286	R255	G236 B131	
20.	3		693	R255	G251 B248	